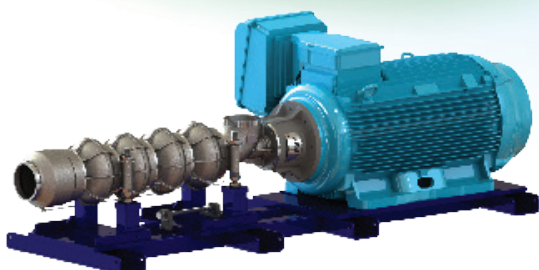


FEDCO IS THE INDUSTRY LEADER IN  
INNOVATIVE PUMPING SOLUTIONS



DESALINATION : REVERSE OSMOSIS

**MSD PUMP SERIES**

MULTISTAGE CENTRIFUGAL HIGH PRESSURE PUMP



## MSD Pump Series

The FEDCO MSD Pump line emerged from the need of high efficiency combined with superior materials suitable for long term seawater service. All investment cast stage components, highly refined flow path and the innovative Water Bearing™ Technology make the MSD pump the “go to” for the most demanding SWRO applications around the world.

### Features:

Patented Water Bearing™ Technology

All Super Duplex investment cast construction

Balanced Impellers

Rotatable inlet connection

Mechanical Seal Cartridge easily accessible

Precision leveling feet for easy alignment

### Benefits:

High Efficiency – Up to 86%

Lubrication – fully lubricated by the pumpage only

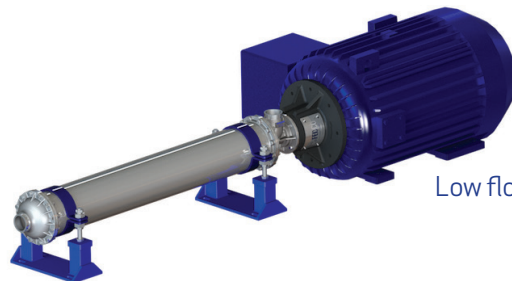
Smooth and quiet operation to meet sound requirements

High inlet pressure option – up to 80 bar

Low Maintenance Design



High flow model



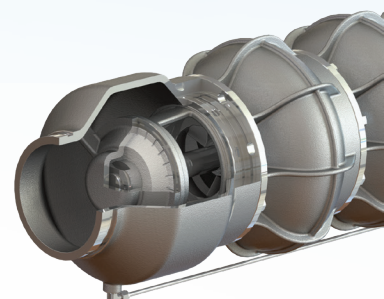
Low flow model

## Best Value for High Pressure Pumping

The MSD centrifugal, high-pressure feed pump is preferred by OEMs and end-users of RO systems for its large capacity range, energy efficiency and low maintenance design. The pump comes with convenient installation options such as a rotatable inlet connection and precision leveling feet for quick alignment. Baseplates are optional and can be custom manufactured. The pump design is low maintenance to reduce downtime as the mechanical seal sits in a removable cartridge for easy replacement and the balance disc can be accessed from the discharge end with minimum disassembly. With the added benefit of all highly corrosive resistant materials, the MSD provides a great solution for systems who target low life cycle costs.

## Exclusive Water Bearing™ Technology

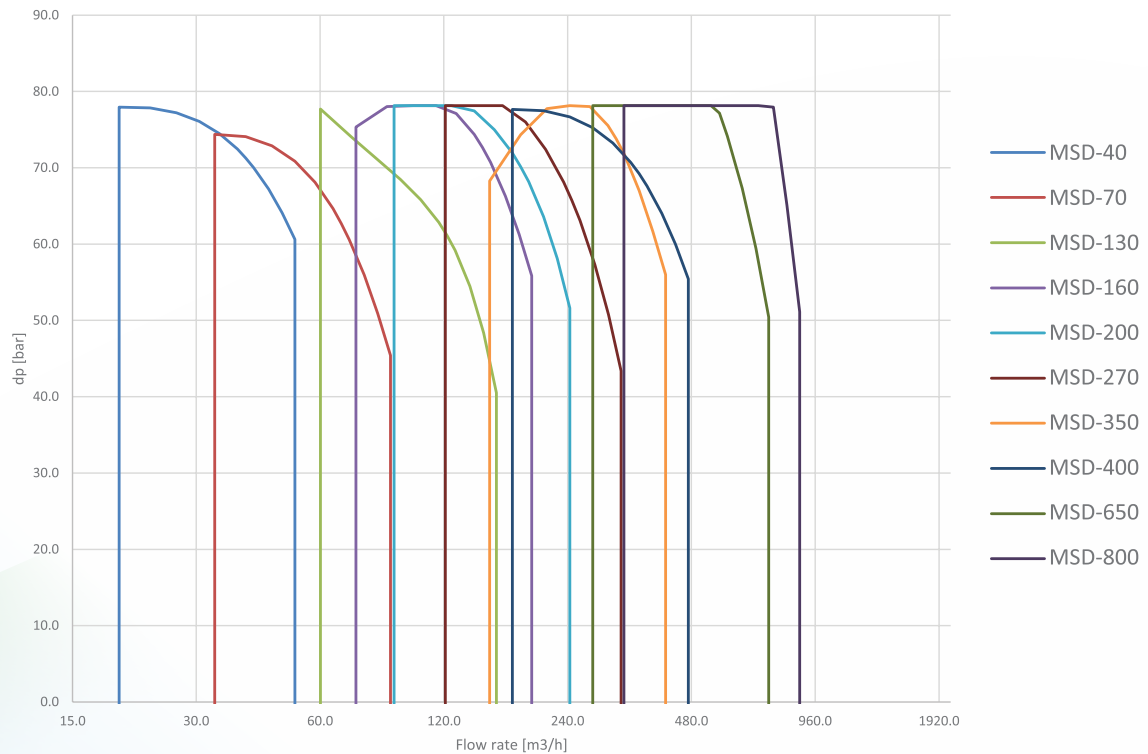
FEDCO's patented Water Bearing™ Technology is designed to handle the entire thrust load generated by the impellers. Located at the discharge end of the pump, the shaft is kept in tension eliminating any problems that can stem from buckling. The product water provides the lubrication, therefore grease or oil maintenance is eliminated with this design.



## Models

Low Flow	MSD-40	High Flow	MSD-160	MSD-400
	MSD-70		MSD-200	MSD-650
	MSD-130		MSD-270	MSD-800
			MSD-350	

## Performance Range



## Horizontal, Multistage Centrifugal Pump

### Operating Envelope

**Capacities:** 20 - 850 m³/h  
(88 - 3750 gpm)

**Pressure:** Up to 82 bar (1200 psi)

**Liquid:** Seawater, brackish water, potable water, (20 microns)

**Temperature:** Up to 70° C (158° F)

### Materials

**Shell/Casing:** Super Duplex SS

**Impeller:** Super Duplex SS

**Shaft:** Super Duplex SS

**Bearings:** Composite

**Coupling:** Flexible-Disc Type

### Pipe

**Connections:** Grooved End

**Motor:** Standard 2 Pole  
NEMA or IEC

**Warranty:** 18 months

### Available Options

Flanged Connections

High Pressure Inlet

\*Contact FEDCO for your custom option requirements

### Applications

- Seawater and Brackish Water
- Industrial/Municipal
- Chemical
- Produced Water/Water Reuse

### Retrofits

Contact FEDCO to upgrade your existing RO desalination plant to state-of-the art pumps and energy recovery devices.

- Replace expensive and maintenance-intensive positive displacement pumps
- Replace low efficiency centrifugal pumps

FEDCO has feed pumps, booster pumps and energy recovery devices for virtually every size of RO system.

## Committed to Success

In business since 1997, Fluid Equipment Development Company or FEDCO is committed to being the industry leader in the design and manufacture of innovative fluid machinery. Our products are recognized for their superior quality and reliable performance in the reverse osmosis desalination market. We custom engineer highly efficient pumps and energy recovery devices that system builders and end users can depend on. We support customer operations worldwide with easy to use products and long-term relationships to offer the lowest life cycle cost of ownership. Let FEDCO provide the single source for your pumping equipment needs by making fluid energy work for you.™

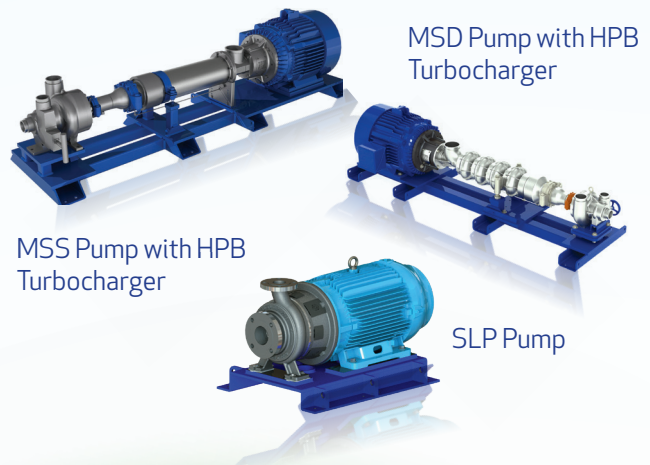
## Efficiency in Service & Support

Let us bring world class service to you. FEDCO is ready to provide service and on-site support for our equipment anywhere in the world. Our service team has many years of experience to assist our customers in installation, commissioning, troubleshooting, servicing and field site repairs. When plant optimiza-

tion is needed for modernizing or improving efficiency, our team can provide retrofit solutions for considerable savings potential. Other service support provided by our trained personnel are operator training on-site or at our sales and services offices in the USA and Dubai, UAE.

## Choose the FEDCO Pump and HPB Energy Recovery Device for the Most Dependable SWRO Package

Pair the HPB turbocharger energy recovery device with the FEDCO series MSS, MSD or SSD centrifugal feed pump for the industry standard in seawater reverse osmosis (RO) desalination packages. Complete your package with the low pressure feed and booster pump SLP Series.



## Global Network

- ★ FEDCO Sales Office
- FEDCO Representatives



Fluid Equipment Development Company  
800 Ternes Drive Monroe, MI 48162 USA, Tel: +1 (734) 241-3935  
Fax: + (734) 241-5173, email: [sales@fedco-usa.com](mailto:sales@fedco-usa.com)  
[www.fedco-usa.com](http://www.fedco-usa.com)

