



HOSPITAL

EXPIRATION DATE MANAGEMENT



DATECHECK PRO

FOR HEALTHCARE

Impact on Quality and Cost

“The vast majority of losses due to expiration are avoidable. And cost avoided by controlling expirations goes right to the **bottom line.**”

Healthcare Purchasing News
“Managing the cost of product expirations”
September 2016

▶ Top 5 Most Challenging JACHO Standards:

1. Disinfection and **expired supplies** (IC.02.02.01)
2. Medical equipment and sterilizers (EC.02.04.03)
3. Emergency medications (MM.03.01.03)
4. Remove **expired medications** (MM.03.01.01)
5. Safe use of look-alike/sound-alike medications (MM.01.02.01)

The Joint Commission Accreditation Ambulatory Care
“2016 Most Challenging Ambulatory Care Standards”
May 2017

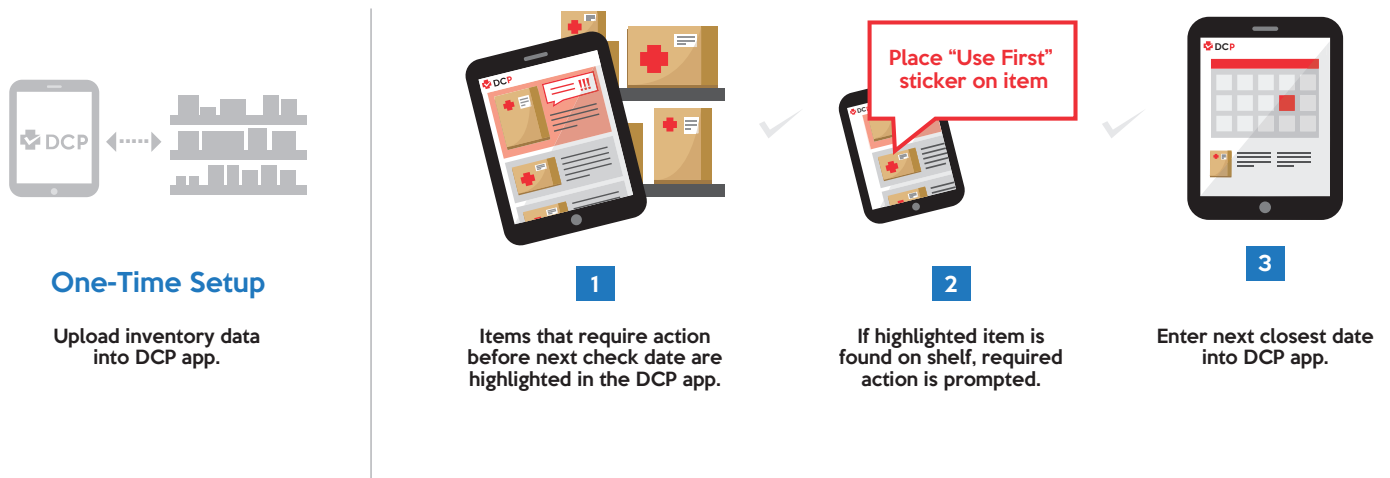
▶ Top 5 Challenges for Hospital Supply Chain:

1. Managing **Expired Items** and Recalled Items
2. Workflow Inefficiencies
3. Revenue Leakage and Poor Charge Capture
4. Lack of Actionable Data
5. Excess Overnight Shipping Costs

Becker's Hospital Review
“5 Challenges for Hospital Supply Chain Leaders”
January 2017

How it Works

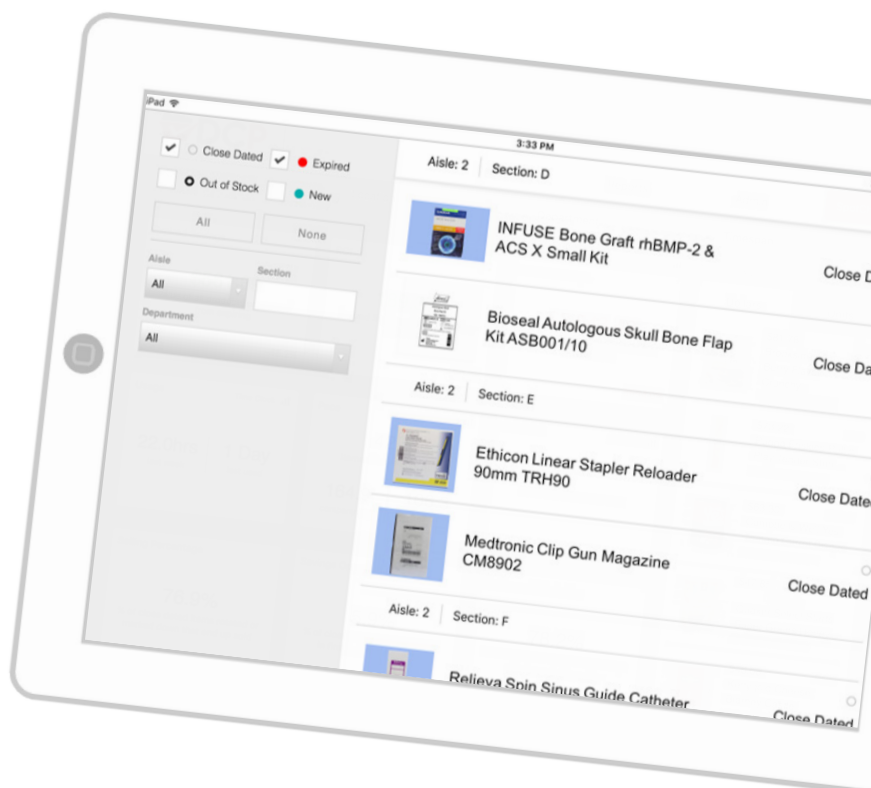
Optimize Your Expiration Date Management with Date Check Pro



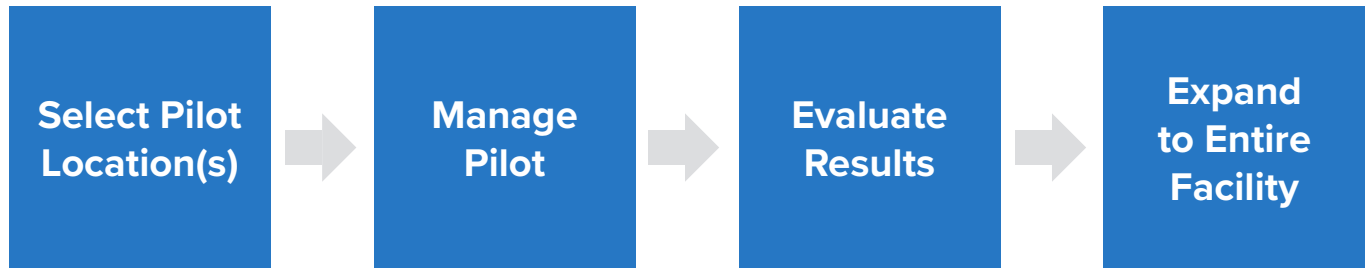
Date Check Pro for Healthcare compliments your existing supply chain software and processes.

Reporting and Actionable Insights

- Physical Checking Labor Hours
- Physical Checking Pace
- Top Expired by Number of Unit
- Top Expired by Location
- Top Expired by Dollars



Integration Timeline



Annual Software License Fee: \$2,700/Facility

Integration Plan

BEFORE PILOT

- Gather historical data on expired supplies by item, quantity, dollar value, and location.
 - Upload inventory data into app.
 - Configure check time and action preferences for each item.
 - Train physical check staff on usage.
-

DURING PILOT

- Update check times in response to incoming pilot data.
 - Optimize action preferences for close dated items in response to incoming pilot data.
 - Negotiate new vendor trade and return for credit policies using incoming pilot data.
-

AFTER PILOT

- Compare pilot results with historical data.
 - Communicate results to hospital leadership and staff.
 - Expand Date Check Pro for Healthcare to entire facility upon successful results.
-

For more information or demo, contact:

Huey Zoroufy

huey@pinpointsoftware.com

262-458-2470 x 107

datecheckhealth.com



DATE CHECK PRO

FOR HEALTHCARE