

DUBAI HILLS ESTATE

PARK POINT B



EMAAR



MERAAS

PARK POINT B

FLOOR
PLANS

DUBAI HILLS

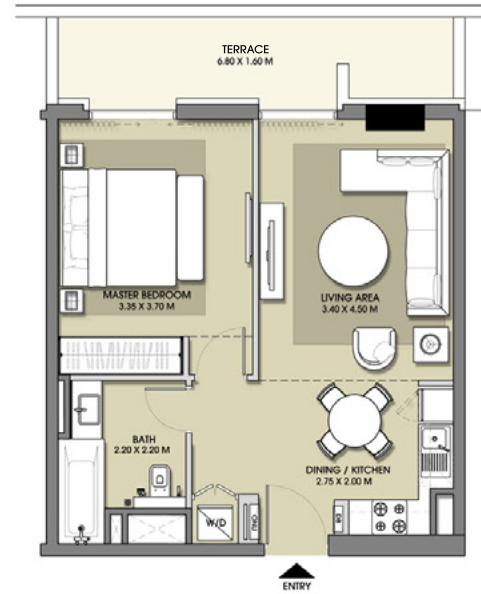
ESTATE

PARK POINT



1 BEDROOM -TYPE 6

LEVEL	UNIT NUMBER	AREA					
		SUITE		BAL/TERRACE		TOTAL	
		ft2	m2	ft2	m2	ft2	m2
BLOCK B							
1	B113	551.87	51.27	129.17	12.00	681.04	63.27



LEVEL 01



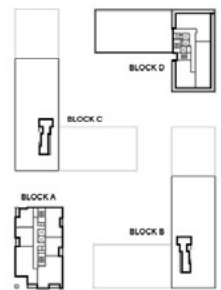
LEVEL 02 - 06



LEVEL 07



LEVEL 08



LEVEL 09

FLOOR PLAN 1. All dimensions are in imperial and metric, and measured from finish to finish excluding construction tolerances. 2. All materials, dimensions, and drawings are approximate only. 3. Information is subject to change without notice, at developer's absolute discretion. 4. Actual area may vary from the stated area. 5. Drawings not to scale. 6. All images used are for illustrative purposes only and do not represent the actual size, features, specifications, fittings, and furnishings. 7. The developer reserves the right to make revisions / alterations, at its absolute discretion, without any liability whatsoever.



EMAAR

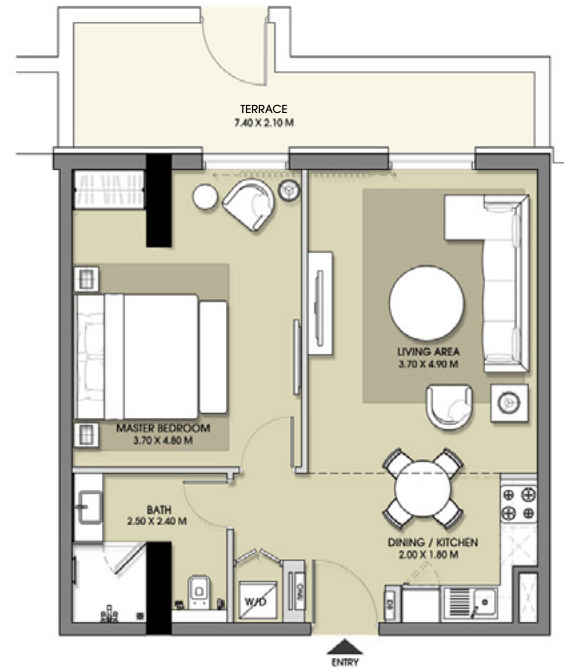


MERAAS

DUBAI HILLS

ESTATE

PARK POINT



1 BEDROOM - TYPE 9							
LEVEL	UNIT NUMBER	AREA				TOTAL	
		SUITE		BALCONY		ft2	m2
BLOCK B							
1	B112	572.75	53.21	172.76	16.05	745.51	69.26
BLOCK C							
1	C116	618.18	57.43	157.69	14.65	775.87	72.08



LEVEL 01



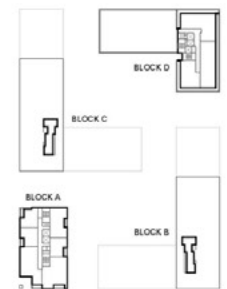
LEVEL 02 - 06



LEVEL 07



LEVEL 08



LEVEL 09

FLOOR PLAN 1. All dimensions are in imperial and metric, and measured from finish to finish excluding construction tolerances. 2. All materials, dimensions, and drawings are approximate only. 3. Information is subject to change without notice, at developer's absolute discretion. 4. Actual area may vary from the stated area. 5. Drawings not to scale. 6. All images used are for illustrative purposes only and do not represent the actual size, features, specifications, fittings, and furnishings. 7. The developer reserves the right to make revisions / alterations, at its absolute discretion, without any liability whatsoever.



EMAAR



MERAAS

DUBAI HILLS

ESTATE

PARK POINT



1 BEDROOM -TYPE 11

LEVEL	UNIT NUMBER	AREA					
		SUITE		BAL/TERRACE		TOTAL	
		ft2	m2	ft2	m2	ft2	m2
BLOCK B							
1	B114	577.06	53.61	59.96	5.57	637.01	59.18



LEVEL 01



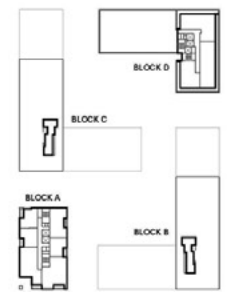
LEVEL 02 - 06



LEVEL 07



LEVEL 08



LEVEL 09

FLOOR PLAN 1. All dimensions are in imperial and metric, and measured from finish to finish excluding construction tolerances. 2. All materials, dimensions, and drawings are approximate only. 3. Information is subject to change without notice, at developer's absolute discretion. 4. Actual area may vary from the stated area. 5. Drawings not to scale. 6. All images used are for illustrative purposes only and do not represent the actual size, features, specifications, fittings, and furnishings. 7. The developer reserves the right to make revisions / alterations, at its absolute discretion, without any liability whatsoever.



EMAAR

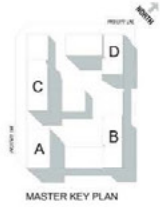


MERAAS

DUBAI HILLS

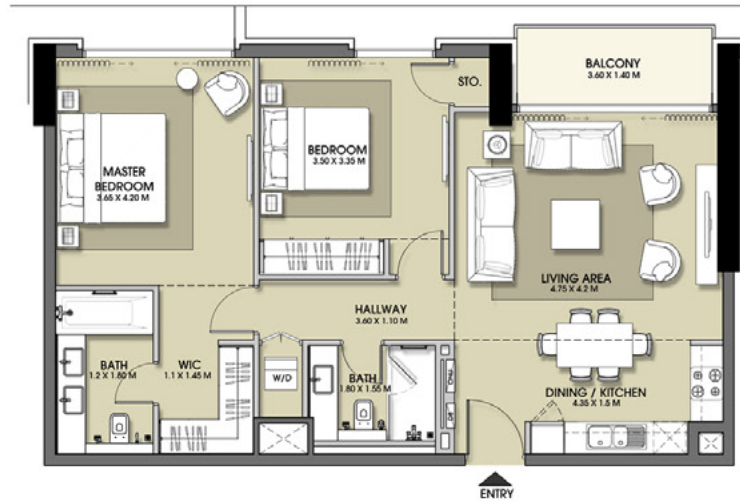
ESTATE

PARK POINT



2 BEDROOM - Type 13

LEVEL	UNIT NUMBER	AREA				TOTAL	
		SUITE		BALCONY		ft2	m2
BLOCK B							
1	8105	953.26	88.56	68.14	6.33	1,021.40	94.89
	8106	949.82	88.24	67.17	6.24	1,016.98	94.48
	8107	945.40	87.83	66.84	6.21	1,012.25	94.04
2	8202	954.12	88.64	62.11	5.77	1,016.23	94.41
	8205	965.32	89.68	61.57	5.72	1,026.89	95.40
	8206	950.89	88.34	61.35	5.70	1,012.25	94.04
	8207	949.17	88.18	61.03	5.67	1,010.22	93.85
3	8302	951.11	88.36	61.57	5.72	1,012.68	94.08
	8305	965.53	89.70	61.14	5.68	1,026.67	95.38
	8306	951.97	88.44	60.28	5.60	1,012.25	94.04
	8307	949.92	88.25	60.49	5.62	1,010.42	93.87
4	8402	954.12	88.64	62.11	5.77	1,016.23	94.41
	8405	965.32	89.68	61.57	5.72	1,026.89	95.40
	8406	950.89	88.34	61.35	5.70	1,012.25	94.04
	8407	949.17	88.18	61.03	5.67	1,010.20	93.85
5	8502	951.11	88.36	61.57	5.72	1,012.68	94.08
	8505	965.32	89.68	61.14	5.68	1,026.46	95.36
	8506	951.97	88.44	60.28	5.60	1,012.25	94.04
	8507	949.92	88.25	60.49	5.62	1,010.42	93.87
6	8602	954.12	88.64	62.11	5.77	1,016.23	94.41
	8605	965.32	89.68	61.57	5.72	1,026.89	95.40
	8606	950.89	88.34	61.35	5.70	1,012.25	94.04
	8607	949.17	88.18	61.03	5.67	1,010.20	93.85
8	8804	863.38	80.21	67.28	6.25	930.66	86.46



LEVEL 01



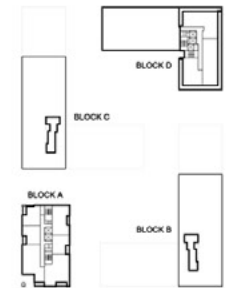
LEVEL 02 - 06



LEVEL 07



LEVEL 08



LEVEL 09

FLOOR PLAN 1. All dimensions are in imperial and metric, and measured from finish to finish excluding construction tolerances. 2. All materials, dimensions, and drawings are approximate only. 3. Information is subject to change without notice, at developer's absolute discretion. 4. Actual area may vary from the stated area. 5. Drawings not to scale. 6. All images used are for illustrative purposes only and do not represent the actual size, features, specifications, fittings, and furnishings. 7. The developer reserves the right to make revisions / alterations, at its absolute discretion, without any liability whatsoever.



EMAAR



MERAAS

DUBAI HILLS

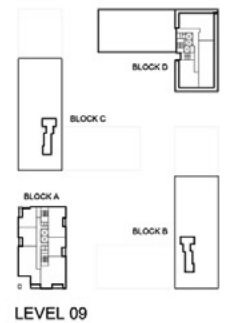
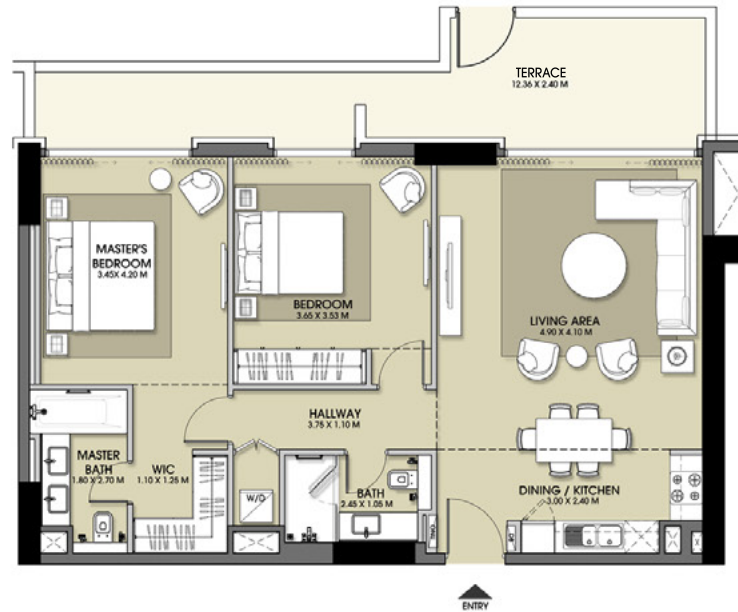
ESTATE

PARK POINT



2 BEDROOM - TYPE 14

LEVEL	UNIT NUMBER	AREA					
		SUITE		BAL/TERRACE		TOTAL	
		ft2	m2	ft2	m2	ft2	m2
BLOCK B							
1	B102	1,006.22	93.48	308.82	28.69	1,315.04	122.17
	B103	1,009.02	93.74	310.00	28.80	1,319.02	122.54



FLOOR PLAN 1. All dimensions are in imperial and metric, and measured from finish to finish excluding construction tolerances. 2. All materials, dimensions, and drawings are approximate only. 3. Information is subject to change without notice, at developer's absolute discretion. 4. Actual area may vary from the stated area. 5. Drawings not to scale. 6. All images used are for illustrative purposes only and do not represent the actual size, features, specifications, fittings, and furnishings. 7. The developer reserves the right to make revisions / alterations, at its absolute discretion, without any liability whatsoever.

DUBAI HILLS

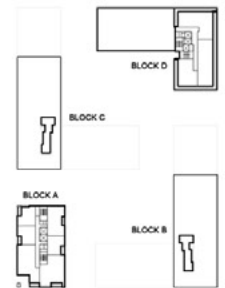
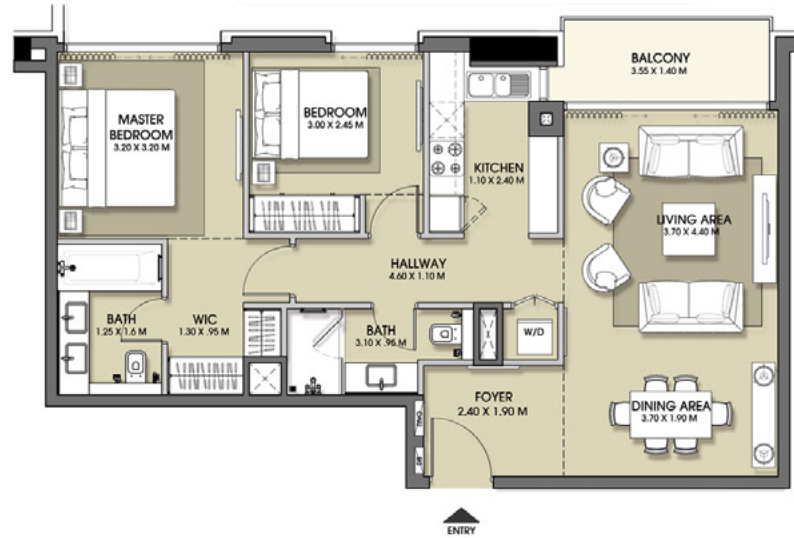
ESTATE

PARK POINT



2 BEDROOM -TYPE 17

LEVEL	UNIT NUMBER	AREA				TOTAL	
		SUITE		BALCONY		ft ²	m ²
BLOCK B							
2	B201	876.40	81.42	58.66	5.45	935.07	86.87
3	B301	878.34	81.60	58.66	5.45	937.65	87.11
4	B401	876.40	81.42	58.66	5.45	935.07	86.87
5	B501	878.99	81.66	58.66	5.45	937.65	87.11
6	B601	876.40	81.42	58.66	5.45	935.07	86.87
BLOCK C							
7	C702	868.44	80.68	60.60	5.63	929.04	86.31
8	C802	867.26	80.57	60.49	5.62	927.75	86.19



FLOOR PLAN 1. All dimensions are in imperial and metric, and measured from finish to finish excluding construction tolerances. 2. All materials, dimensions, and drawings are approximate only. 3. Information is subject to change without notice, at developer's absolute discretion. 4. Actual area may vary from the stated area. 5. Drawings not to scale. 6. All images used are for illustrative purposes only and do not represent the actual size, features, specifications, fittings, and furnishings. 7. The developer reserves the right to make revisions / alterations, at its absolute discretion, without any liability whatsoever.



EMAAR

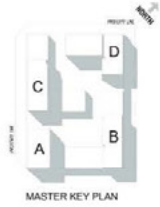


MERAAS

DUBAI HILLS

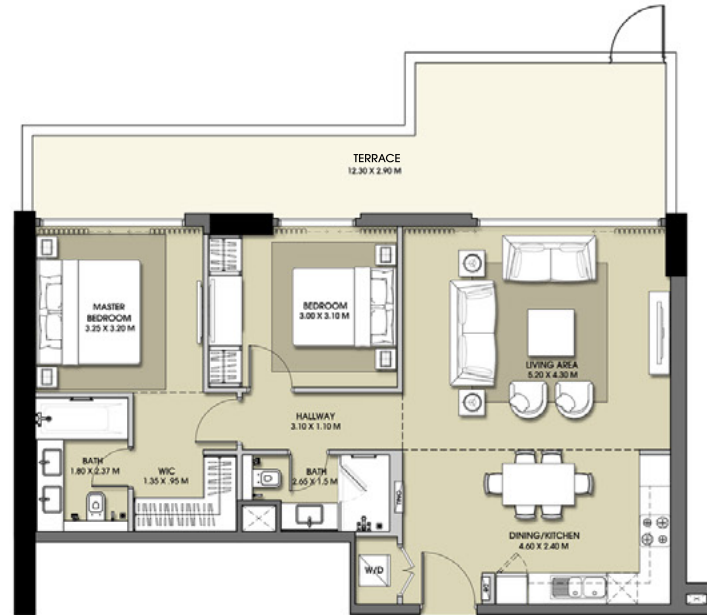
ESTATE

PARK POINT



2 BEDROOM - TYPE 18

LEVEL	UNIT NUMBER	AREA				TOTAL	
		SUITE		BAL/TERRACE		ft2	m2
BLOCK B							
1	B101	921.40	85.60	306.02	28.43	1,227.42	114.03



LEVEL 01



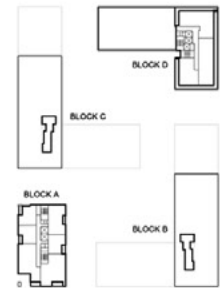
LEVEL 02 - 06



LEVEL 07



LEVEL 08



LEVEL 09

FLOOR PLAN 1. All dimensions are in imperial and metric, and measured from finish to finish excluding construction tolerances. 2. All materials, dimensions, and drawings are approximate only. 3. Information is subject to change without notice, at developer's absolute discretion. 4. Actual area may vary from the stated area. 5. Drawings not to scale. 6. All images used are for illustrative purposes only and do not represent the actual size, features, specifications, fittings, and furnishings. 7. The developer reserves the right to make revisions / alterations, at its absolute discretion, without any liability whatsoever.

DUBAI HILLS

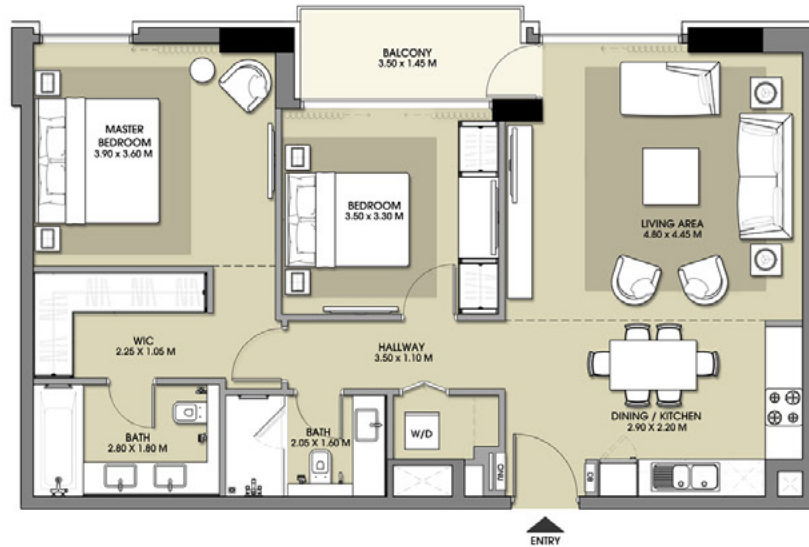
ESTATE

PARK POINT



2 BEDROOM - TYPE 21

LEVEL	UNIT NUMBER	AREA				TOTAL	
		SUITE		BALCONY		ft ²	m ²
BLOCK B							
2	8208	958.86	89.08	63.29	5.88	1,022.15	94.96
3	8303	959.29	89.12	63.08	5.86	1,022.36	94.98
4	8403	957.03	88.91	63.08	5.86	1,020.10	94.77
5	8503	959.29	89.12	63.08	5.86	1,022.36	94.98
6	8603	958.86	89.08	63.29	5.88	1,022.15	94.96



LEVEL 01



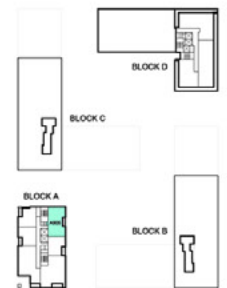
LEVEL 02 - 06



LEVEL 07



LEVEL 08



LEVEL 09

FLOOR PLAN 1. All dimensions are in imperial and metric, and measured from finish to finish excluding construction tolerances. 2. All materials, dimensions, and drawings are approximate only. 3. Information is subject to change without notice, at developer's absolute discretion. 4. Actual area may vary from the stated area. 5. Drawings not to scale. 6. All images used are for illustrative purposes only and do not represent the actual size, features, specifications, fittings, and furnishings. 7. The developer reserves the right to make revisions / alterations, at its absolute discretion, without any liability whatsoever.



EMAAR

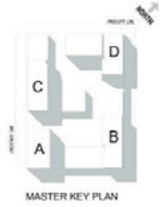


MERAAS

DUBAI HILLS

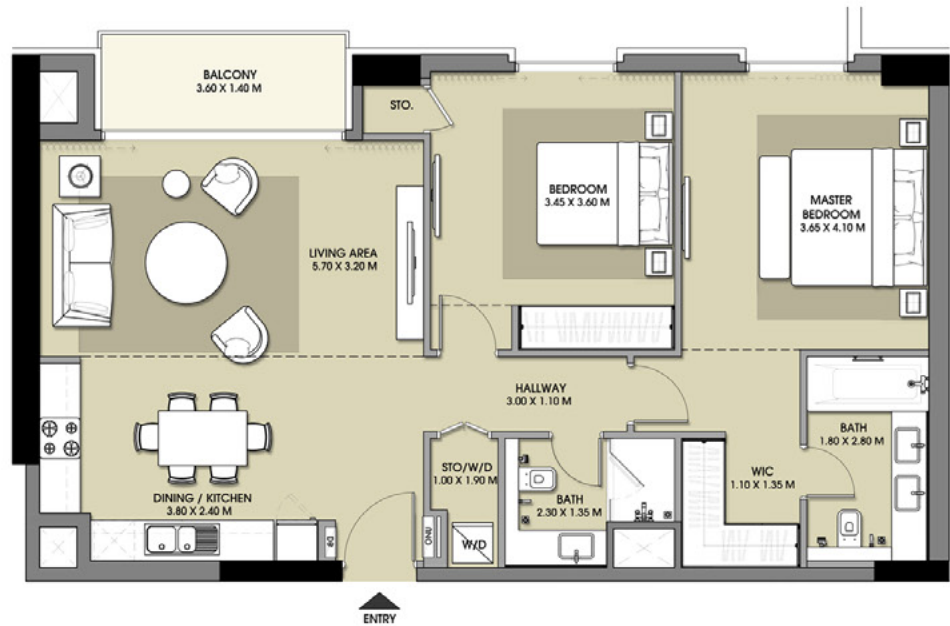
ESTATE

PARK POINT



2 BEDROOM - TYPE 27

LEVEL	UNIT NUMBER	AREA					
		SUITE		BALCONY		TOTAL	
		ft2	m2	ft2	m2	ft2	m2
BLOCK B							
2	B212	1,016.66	94.45	60.28	5.60	1,076.94	100.05
3	B312	1,012.89	94.10	59.52	5.53	1,072.42	99.63
4	B412	1,016.66	94.45	60.28	5.60	1,076.94	100.05
5	B512	1,012.89	94.10	59.63	5.54	1,072.52	99.64
6	B612	1,016.34	94.42	60.28	5.60	1,076.94	100.05
7	B709	1,016.66	94.45	60.28	5.60	1,076.94	100.05



LEVEL 01



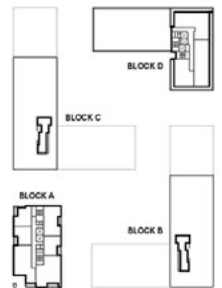
LEVEL 02 - 06



LEVEL 07



LEVEL 08



LEVEL 09

FLOOR PLAN 1. All dimensions are in imperial and metric, and measured from finish to finish excluding construction tolerances. 2. All materials, dimensions, and drawings are approximate only. 3. Information is subject to change without notice, at developer's absolute discretion. 4. Actual area may vary from the stated area. 5. Drawings not to scale. 6. All images used are for illustrative purposes only and do not represent the actual size, features, specifications, fittings, and furnishings. 7. The developer reserves the right to make revisions / alterations, at its absolute discretion, without any liability whatsoever.



EMAAR | MERAAS

DUBAI HILLS

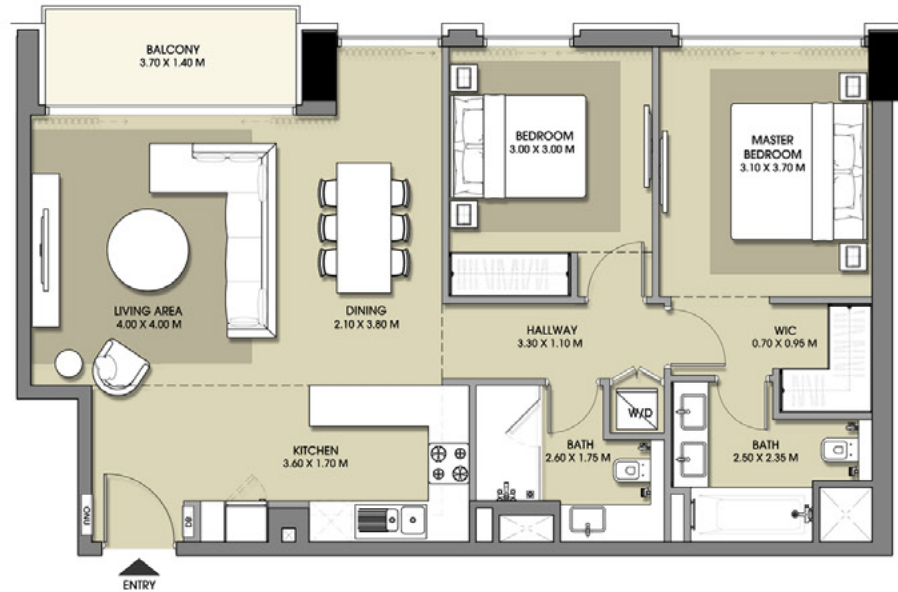
ESTATE

PARK POINT



2 BEDROOM - TYPE 28

LEVEL	UNIT NUMBER	AREA				TOTAL	
		SUITE		BALCONY		ft2	m2
BLOCK B							
7	8706	934.32	96.80	64.15	5.96	998.47	92.76



LEVEL 01



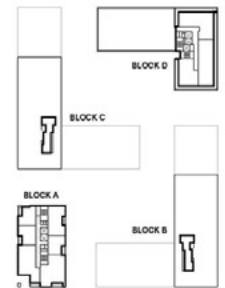
LEVEL 02 - 06



LEVEL 07



LEVEL 08



LEVEL 09

FLOOR PLAN 1. All dimensions are in imperial and metric, and measured from finish to finish excluding construction tolerances. 2. All materials, dimensions, and drawings are approximate only. 3. Information is subject to change without notice, at developer's absolute discretion. 4. Actual area may vary from the stated area. 5. Drawings not to scale. 6. All images used are for illustrative purposes only and do not represent the actual size, features, specifications, fittings, and furnishings. 7. The developer reserves the right to make revisions / alterations, at its absolute discretion, without any liability whatsoever.



EMAAR



MERAAS

DUBAI HILLS

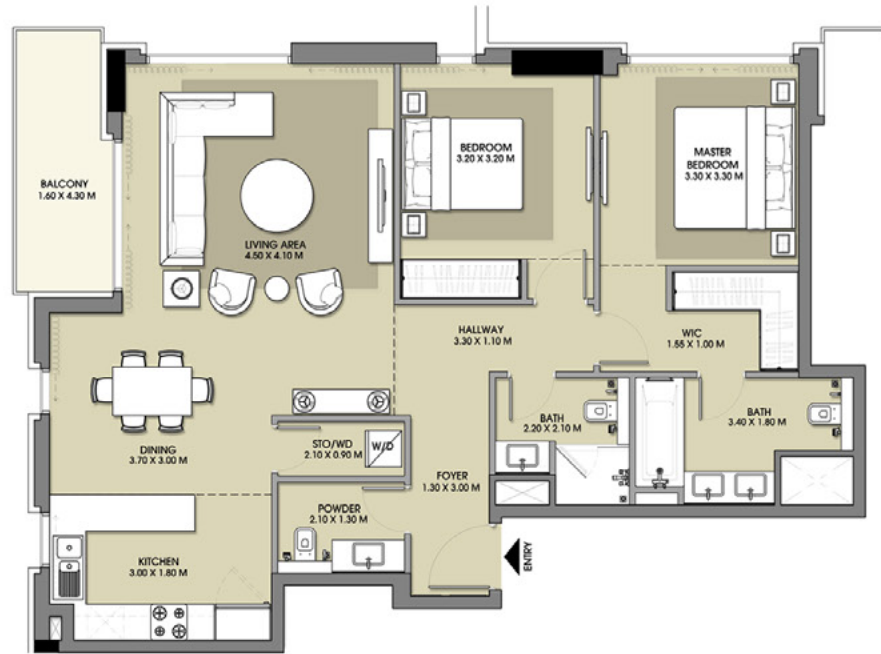
ESTATE

PARK POINT



2 BEDROOM - TYPE 29

LEVEL	UNIT NUMBER	AREA				TOTAL	
		SUITE		BALCONY		ft2	m2
BLOCK B							
7	B705	1,108.91	103.02	78.47	7.29	1,187.38	110.31

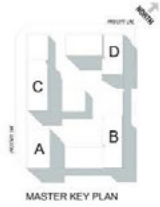


FLOOR PLAN 1. All dimensions are in imperial and metric, and measured from finish to finish excluding construction tolerances. 2. All materials, dimensions, and drawings are approximate only. 3. Information is subject to change without notice, at developer's absolute discretion. 4. Actual area may vary from the stated area. 5. Drawings not to scale. 6. All images used are for illustrative purposes only and do not represent the actual size, features, specifications, fittings, and furnishings. 7. The developer reserves the right to make revisions / alterations, at its absolute discretion, without any liability whatsoever.

DUBAI HILLS

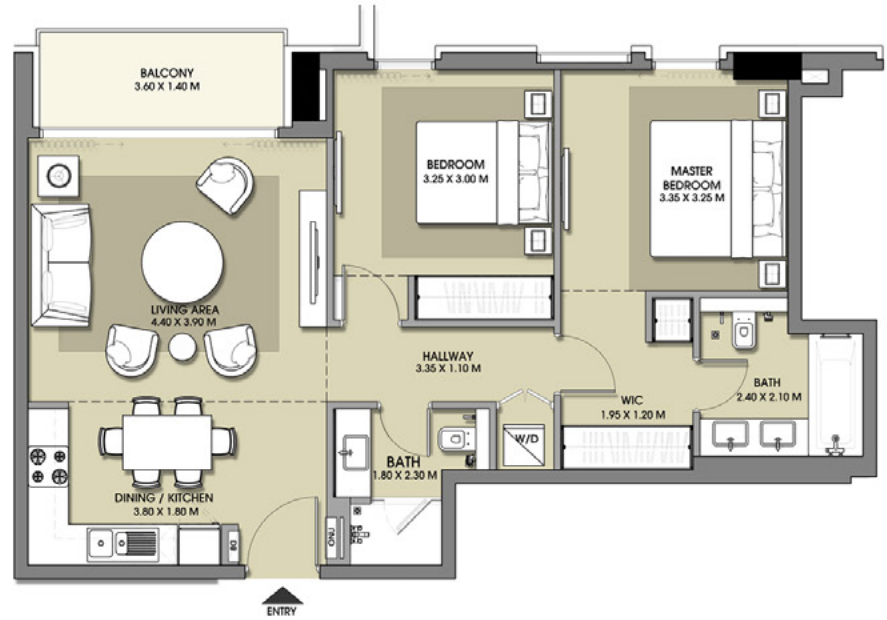
ESTATE

PARK POINT



2 BEDROOM - TYPE 30

LEVEL	UNIT NUMBER	AREA					
		SUITE		BALCONY		TOTAL	
		ft2	m2	ft2	m2	ft2	m2
BLOCK B							
7	B704	823.45	76.50	667.37	62.00	885.45	82.26



LEVEL 01



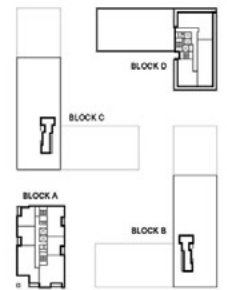
LEVEL 02 - 06



LEVEL 07



LEVEL 08



LEVEL 09

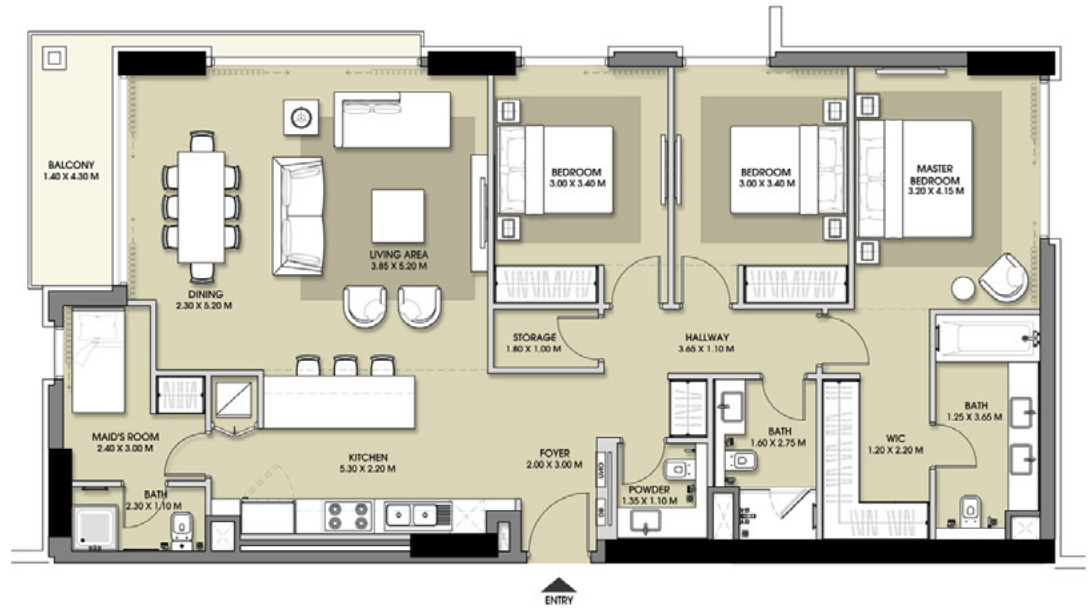
FLOOR PLAN 1. All dimensions are in imperial and metric, and measured from finish to finish excluding construction tolerances. 2. All materials, dimensions, and drawings are approximate only. 3. Information is subject to change without notice, at developer's absolute discretion. 4. Actual area may vary from the stated area. 5. Drawings not to scale. 6. All images used are for illustrative purposes only and do not represent the actual size, features, specifications, fittings, and furnishings. 7. The developer reserves the right to make revisions / alterations, at its absolute discretion, without any liability whatsoever.

DUBAI HILLS ESTATE PARK POINT



3 BEDROOM - TYPE 38

LEVEL	UNIT NUMBER	AREA					
		SUITE		BALCONY		TOTAL	
		ft ²	m ²	ft ²	m ²	ft ²	m ²
BLOCK B							
2	B204	1,485.65	138.02	92.68	8.61	1,578.33	146.63
	B211	1,477.79	137.29	95.69	8.89	1,573.48	146.18
3	B304	1,485.97	138.05	92.79	8.62	1,578.76	146.67
	B311	1,477.90	137.30	95.69	8.89	1,573.59	146.19
4	B404	1,485.65	138.02	92.68	8.61	1,578.33	146.63
	B411	1,478.44	137.35	95.69	8.89	1,574.13	146.24
5	B504	1,485.86	138.04	92.68	8.61	1,578.54	146.65
	B511	1,477.68	137.28	95.69	8.89	1,573.37	146.17
6	B604	1,485.65	138.02	92.68	8.61	1,578.33	146.63
	B611	1,477.90	137.30	95.69	8.89	1,573.59	146.19
7	B708	1,478.33	137.34	95.69	8.89	1,574.02	146.23
BLOCK C							
2	C203	1,486.19	138.07	95.05	8.83	1,581.23	146.90
	C212	1,496.41	139.02	93.54	8.69	1,589.95	147.71
3	C303	1,483.39	137.81	94.83	8.81	1,578.22	146.62
4	C403	1,486.19	138.07	95.05	8.83	1,581.23	146.90
	C412	1,496.41	139.02	93.54	8.69	1,589.95	147.71
5	C503	1,483.39	137.81	94.83	8.81	1,578.22	146.62
6	C603	1,486.19	138.07	95.05	8.83	1,581.23	146.90



FLOOR PLAN 1. All dimensions are in imperial and metric, and measured from finish to finish excluding construction tolerances. 2. All materials, dimensions, and drawings are approximate only. 3. Information is subject to change without notice, at developer's absolute discretion. 4. Actual area may vary from the stated area. 5. Drawings not to scale. 6. All images used are for illustrative purposes only and do not represent the actual size, features, specifications, fittings, and furnishings. 7. The developer reserves the right to make revisions / alterations, at its absolute discretion, without any liability whatsoever.

DUBAI HILLS

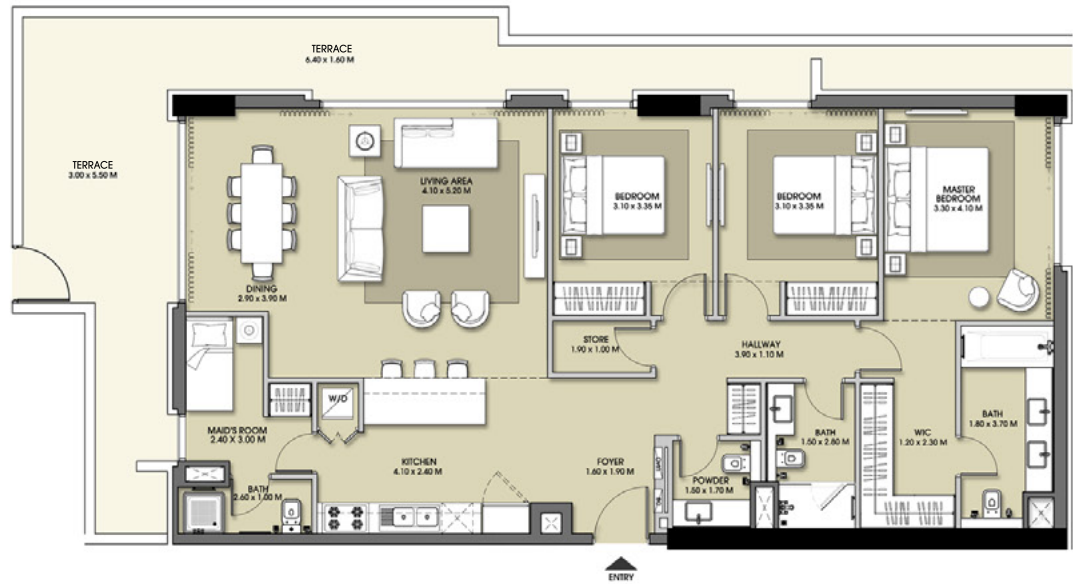
ESTATE

PARK POINT



3 BEDROOM - TYPE 39

LEVEL	UNIT NUMBER	AREA				TOTAL	
		SUITE		BAL/TERRACE		ft2	m2
BLOCK B							
1	B104	1,529.99	142.14	445.31	41.37	1,975.30	183.51



LEVEL 01



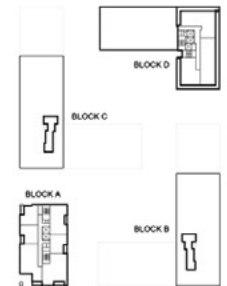
LEVEL 02 - 06



LEVEL 07



LEVEL 08



LEVEL 09

FLOOR PLAN 1. All dimensions are in imperial and metric, and measured from finish to finish excluding construction tolerances. 2. All materials, dimensions, and drawings are approximate only. 3. Information is subject to change without notice, at developer's absolute discretion. 4. Actual area may vary from the stated area. 5. Drawings not to scale. 6. All images used are for illustrative purposes only and do not represent the actual size, features, specifications, fittings, and furnishings. 7. The developer reserves the right to make revisions / alterations, at its absolute discretion, without any liability whatsoever.



EMAAR

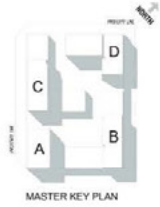


MERAAS

DUBAI HILLS

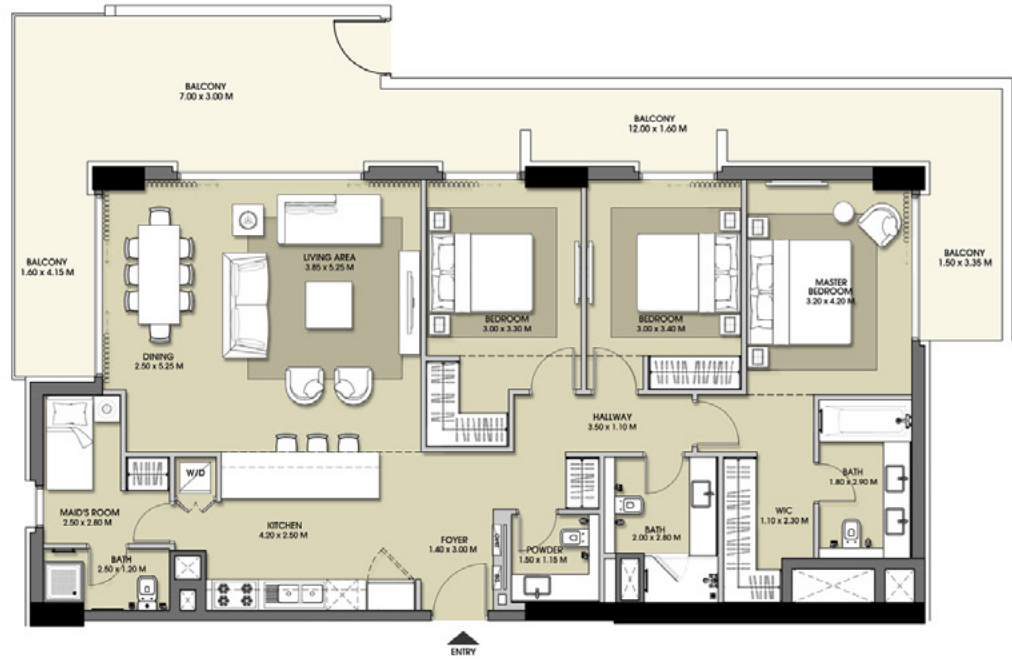
ESTATE

PARK POINT



3 BEDROOM - TYPE 41

LEVEL	UNIT NUMBER	AREA				TOTAL	
		SUITE		BALCONY		ft2	m2
BLOCK B							
1	B111	1,471.55	136.71	592.77	55.07	2,064.32	191.78

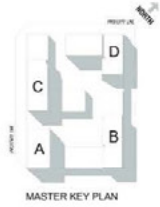


FLOOR PLAN 1. All dimensions are in imperial and metric, and measured from finish to finish excluding construction tolerances. 2. All materials, dimensions, and drawings are approximate only. 3. Information is subject to change without notice, at developer's absolute discretion. 4. Actual area may vary from the stated area. 5. Drawings not to scale. 6. All images used are for illustrative purposes only and do not represent the actual size, features, specifications, fittings, and furnishings. 7. The developer reserves the right to make revisions / alterations, at its absolute discretion, without any liability whatsoever.

DUBAI HILLS

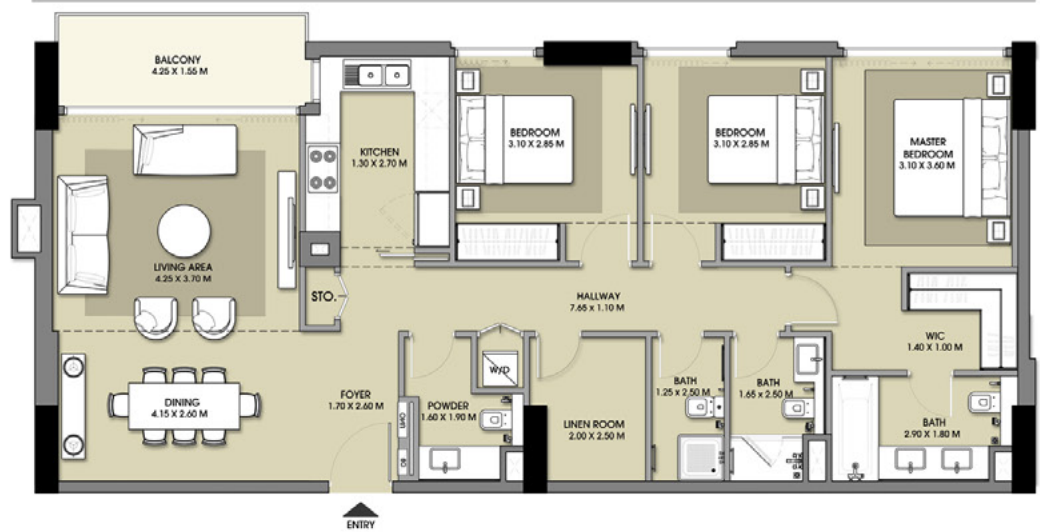
ESTATE

PARK POINT



3 BEDROOM - TYPE 45

LEVEL	UNIT NUMBER	AREA					
		SUITE		BALCONY		TOTAL	
		ft2	m2	ft2	m2	ft2	m2
BLOCK B							
1	B110	1,283.07	119.20	75.99	7.06	1,359.06	126.26
2	B210	1,287.91	119.65	68.78	6.39	1,356.69	126.04
3	B310	1,287.91	119.65	68.24	6.34	1,356.16	125.99
4	B410	1,287.91	119.65	68.78	6.39	1,356.69	126.04
5	B510	1,287.91	119.65	68.24	6.34	1,356.16	125.99
6	B610	1,287.91	119.65	68.78	6.39	1,356.69	126.04
7	B707	1,291.46	119.98	68.78	6.39	1,360.25	126.37
BLOCK C							
2	C204	1,295.88	120.39	68.46	6.36	1,364.34	126.75
3	C304	1,301.69	120.93	65.98	6.13	1,367.67	127.06
5	C504	1,301.69	120.93	65.98	6.13	1,367.67	127.06
6	C604	1,295.88	120.39	68.46	6.36	1,364.34	126.75



FLOOR PLAN 1. All dimensions are in imperial and metric, and measured from finish to finish excluding construction tolerances. 2. All materials, dimensions, and drawings are approximate only. 3. Information is subject to change without notice, at developer's absolute discretion. 4. Actual area may vary from the stated area. 5. Drawings not to scale. 6. All images used are for illustrative purposes only and do not represent the actual size, features, specifications, fittings, and furnishings. 7. The developer reserves the right to make revisions / alterations, at its absolute discretion, without any liability whatsoever.

DUBAI HILLS

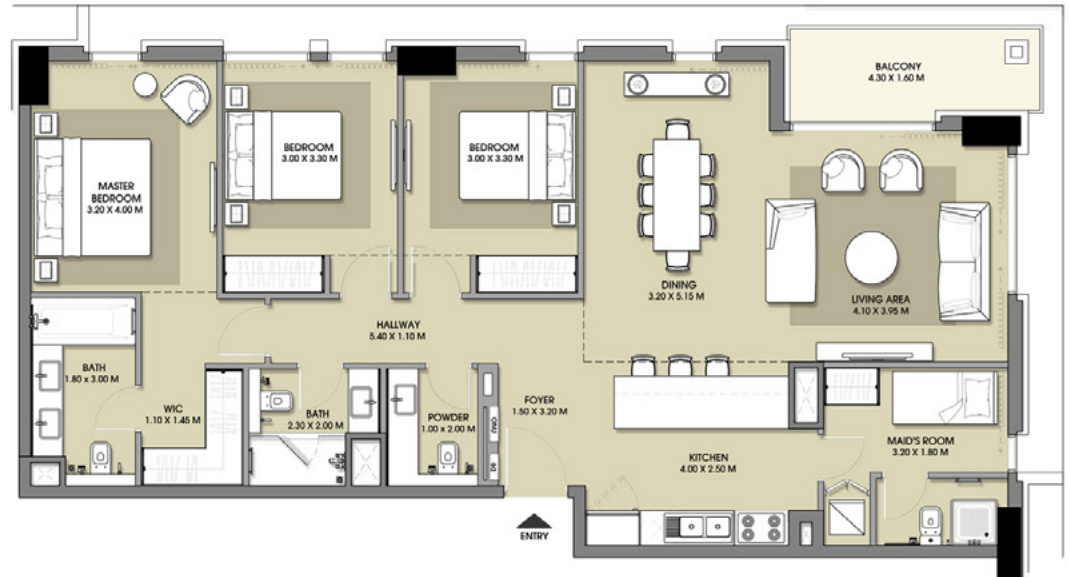
ESTATE

PARK POINT



3 BEDROOM - TYPE 46

LEVEL	UNIT NUMBER	AREA				TOTAL	
		SUITE		BALCONY		ft2	m2
BLOCK B							
1	B108	1,386.62	128.82	78.25	7.27	1,464.87	136.09
2	B208	1,386.94	128.85	78.47	7.29	1,465.41	136.14
3	B308	1,386.94	128.85	78.47	7.29	1,465.41	136.14
4	B408	1,386.94	128.85	78.47	7.29	1,465.41	136.14
5	B508	1,386.94	128.85	78.47	7.29	1,465.41	136.14
6	B608	1,386.94	128.85	78.47	7.29	1,465.41	136.14

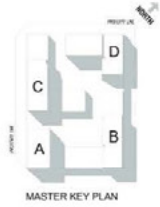


FLOOR PLAN 1. All dimensions are in imperial and metric, and measured from finish to finish excluding construction tolerances. 2. All materials, dimensions, and drawings are approximate only. 3. Information is subject to change without notice, at developer's absolute discretion. 4. Actual area may vary from the stated area. 5. Drawings not to scale. 6. All images used are for illustrative purposes only and do not represent the actual size, features, specifications, fittings, and furnishings. 7. The developer reserves the right to make revisions / alterations, at its absolute discretion, without any liability whatsoever.

DUBAI HILLS

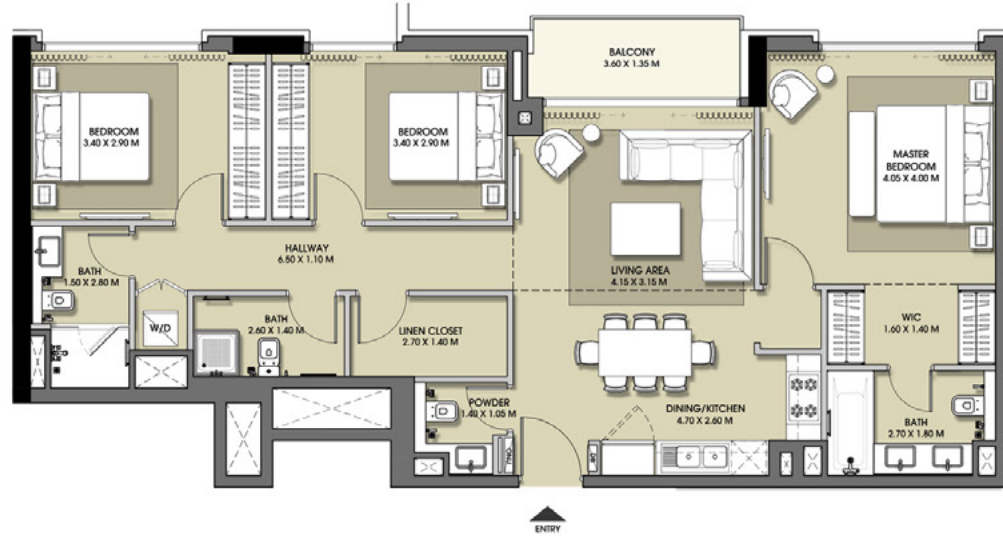
ESTATE

PARK POINT



3 BEDROOM - TYPE 55

LEVEL	UNIT NUMBER	AREA				TOTAL	
		SUITE		BALCONY		ft2	m2
BLOCK B							
7	B701	1,176.18	109.27	61.14	5.68	1,237.32	114.95
8	B801	1,175.86	109.24	69.00	6.41	1,244.86	115.65



LEVEL 01



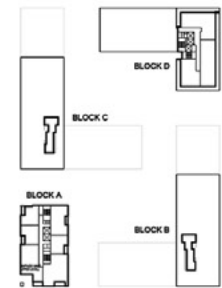
LEVEL 02 - 06



LEVEL 07



LEVEL 08



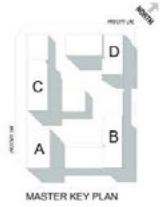
LEVEL 09

FLOOR PLAN 1. All dimensions are in imperial and metric, and measured from finish to finish excluding construction tolerances. 2. All materials, dimensions, and drawings are approximate only. 3. Information is subject to change without notice, at developer's absolute discretion. 4. Actual area may vary from the stated area. 5. Drawings not to scale. 6. All images used are for illustrative purposes only and do not represent the actual size, features, specifications, fittings, and furnishings. 7. The developer reserves the right to make revisions / alterations, at its absolute discretion, without any liability whatsoever.

DUBAI HILLS

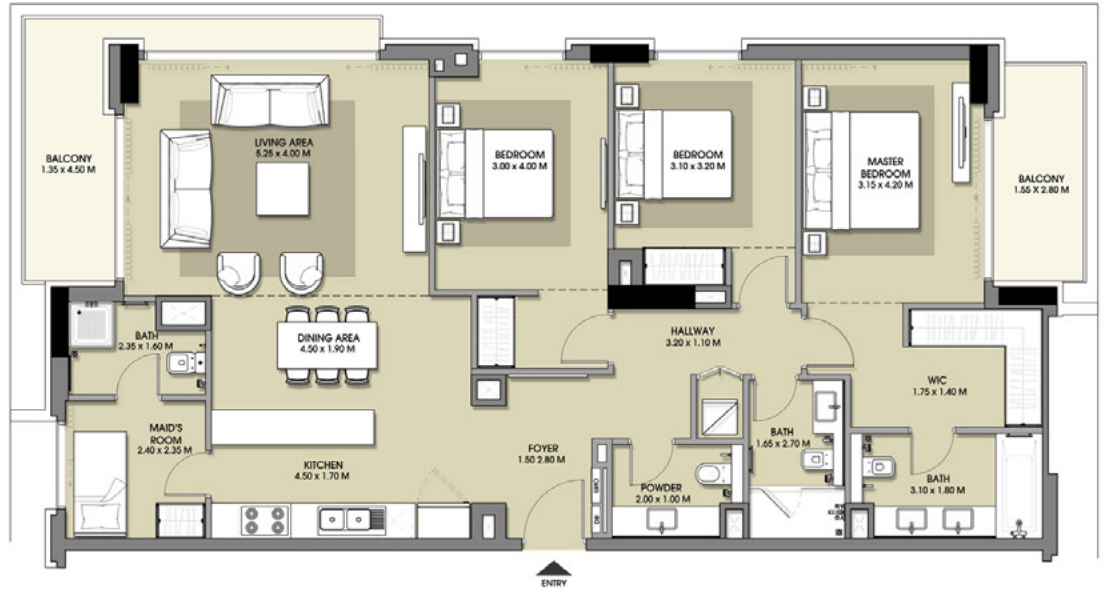
ESTATE

PARK POINT



3 BEDROOM - TYPE 57

LEVEL	UNIT NUMBER	AREA					
		SUITE		BALCONY		TOTAL	
		ft2	m2	ft2	m2	ft2	m2
BLOCK B							
7	B702	1,437.75	133.57	554.56	51.52	1,992.31	185.09
8	B802	1,435.06	133.32	175.67	16.32	1,610.72	149.64



FLOOR PLAN 1. All dimensions are in imperial and metric, and measured from finish to finish excluding construction tolerances. 2. All materials, dimensions, and drawings are approximate only. 3. Information is subject to change without notice, at developer's absolute discretion. 4. Actual area may vary from the stated area. 5. Drawings not to scale. 6. All images used are for illustrative purposes only and do not represent the actual size, features, specifications, fittings, and furnishings. 7. The developer reserves the right to make revisions / alterations, at its absolute discretion, without any liability whatsoever.

DUBAI HILLS

ESTATE

PARK POINT

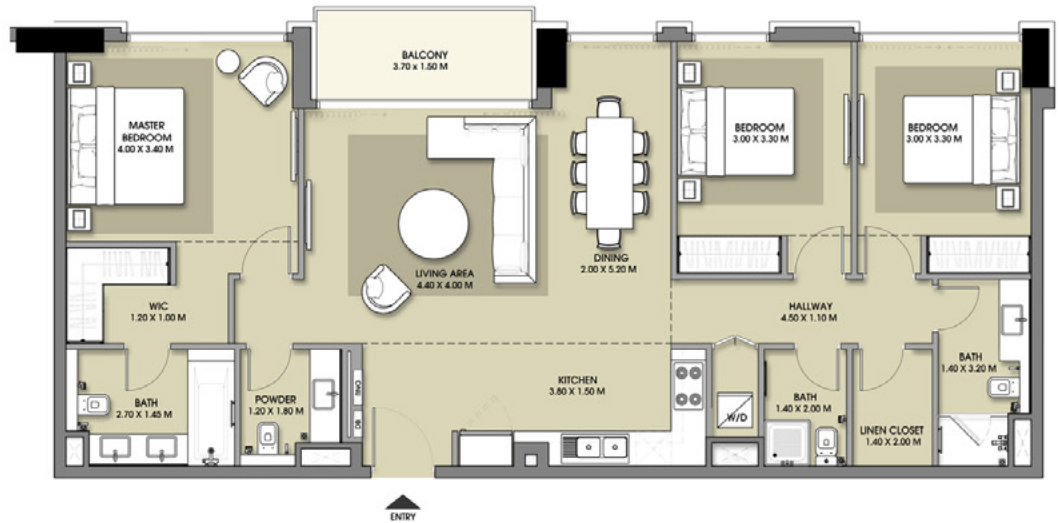


3 BEDROOM - TYPE 59

LEVEL	UNIT NUMBER	AREA				TOTAL	
		SUITE		BALCONY		ft ²	m ²
BLOCK B							
1	B109	1,284.58	119.34	69.32	6.44	1,353.90	125.78
2	B209	1,290.82	119.92	62.75	5.83	1,353.57	125.75
3	B309	1,291.36	119.97	62.86	5.84	1,354.22	125.81
4	B409	1,290.82	119.92	62.75	5.83	1,353.57	125.75
5	B509	1,291.36	119.97	62.86	5.84	1,354.22	125.81
6	B609	1,290.83	119.92	62.75	5.83	1,353.57	125.75

BLOCK B

7	B703	1,286.73	119.54	62.97	5.85	1,349.70	125.39
8	B803	1,289.42	119.79	67.49	6.27	1,356.91	126.06



LEVEL 01



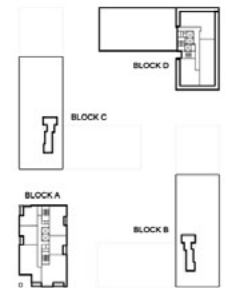
LEVEL 02 - 06



LEVEL 07



LEVEL 08



LEVEL 09

FLOOR PLAN 1. All dimensions are in imperial and metric, and measured from finish to finish excluding construction tolerances. 2. All materials, dimensions, and drawings are approximate only. 3. Information is subject to change without notice, at developer's absolute discretion. 4. Actual area may vary from the stated area. 5. Drawings not to scale. 6. All images used are for illustrative purposes only and do not represent the actual size, features, specifications, fittings, and furnishings. 7. The developer reserves the right to make revisions / alterations, at its absolute discretion, without any liability whatsoever.



EMAAR

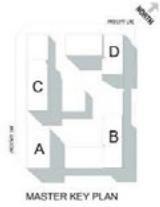


MERAAS

DUBAI HILLS

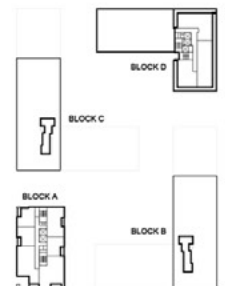
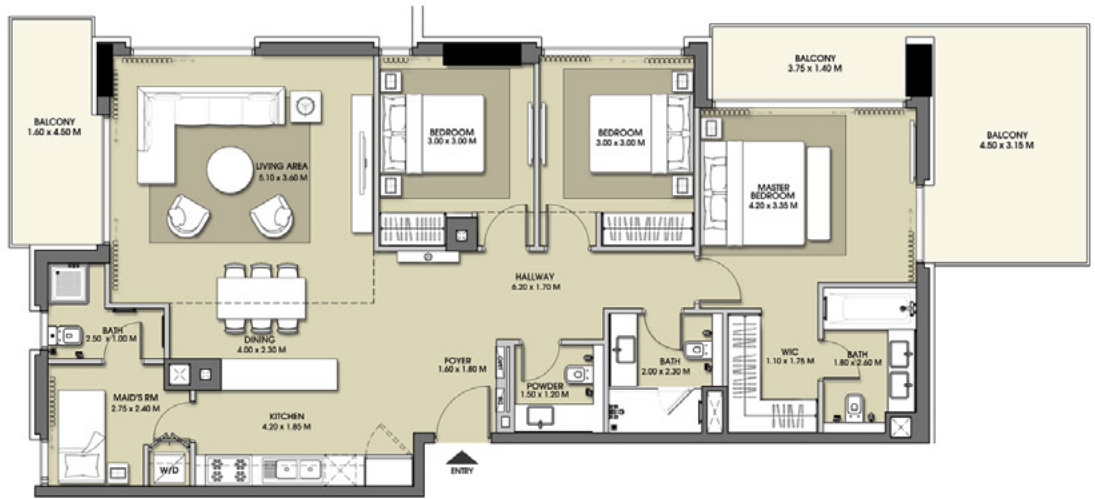
ESTATE

PARK POINT



3 BEDROOM - TYPE 60

LEVEL	UNIT NUMBER	AREA					
		SUITE		BALCONY		TOTAL	
		ft ²	m ²	ft ²	m ²	ft ²	m ²
BLOCK B							
8	8805	1,347.87	125.22	306.24	28.45	1,654.10	155.67



FLOOR PLAN 1. All dimensions are in imperial and metric, and measured from finish to finish excluding construction tolerances. 2. All materials, dimensions, and drawings are approximate only. 3. Information is subject to change without notice, at developer's absolute discretion. 4. Actual area may vary from the stated area. 5. Drawings not to scale. 6. All images used are for illustrative purposes only and do not represent the actual size, features, specifications, fittings, and furnishings. 7. The developer reserves the right to make revisions / alterations, at its absolute discretion, without any liability whatsoever.



EMAAR



MERAAS

DUBAI HILLS ESTATE



PARK POINT B



EMAAR



MERAAS