

هاربر فيوز
HARBOUR VIEWS

دُبَايَ
DUBAI CREEK HARBOUR



دُبَايَ
DUBAI CREEK HARBOUR



A HOME LIKE
NO OTHER



تواصل مع سلامك الداخلي

FIND YOUR
INNER CALM



يستمر الاحساس ذاته من الرقي الهادئ والزخارف المميزة داخل شقق هاربر فيوز. فباستخدام تصميم جمالي مماثل من الأحجار، والزجاج والخشب، في كل من المناطق الخاصة والعامّة، فإن المناطق الداخلية تبعث على الشعور بالفخامة، والراحة، والسكينة. وقد اختيرت المواد ذات القيم الحرارية والصوتية المرتفعة على وجه الخصوص لمنح البرجين أجواءً تُشعرك بالهدوء في جميع أنحاءهما. وتدعوك النوافذ الممتدة من الأرض إلى السقف والشرفات الخاصة لقضاء وقت تستمتع فيه بالمشهد البانورامي وأنت تنعم بالراحة داخل منزلك.

أما البهو المرتفع الذي يملأه الضوء والمصمم بشكل سلس مع مراعاة الراحة، والأماكن المخصصة لإيقاف السيارات ومنطقة النزول المريحة والمناسبة تضمن لك ولضيوفك الشعور بالراحة والاسترخاء فور الدخول إلى هاربر فيوز.

The same sense of quiet sophistication and discrete detailing continues inside the Harbour Views apartment. Using a similar aesthetic of stone, glass and wood, in both the private and public areas, the internal spaces feel luxuriant, flowing and serene. Materials with high thermal and acoustic values have been specifically selected to give the towers a calming ambiance throughout. Floor-to-ceiling windows and private balconies invite you to spend time enjoying the panorama – all from the comfort of your own home.

Designed with ease and comfort in mind, the lofty, light-filled foyer, dedicated parking and a convenient drop-off zone ensure you and your guests feel instantly relaxed upon entering Harbour Views.



أقصى ما جادت به الحياة المعاصرة
THE ULTIMATE IN
CONTEMPORARY LIVING

تعكس فخامة الشقق والفيلات الفن المعماري البسيط والراقي للبرجين. وقد صممت لوحة من الألوان المحايدة في كافة الأتداء خصيصاً لتمنحك شعوراً برحابة المساحات المخصصة للمعيشة وتناول الطعام. في حين أن الأسقف فاتحة الألوان تبرز ارتفاع الشقق.

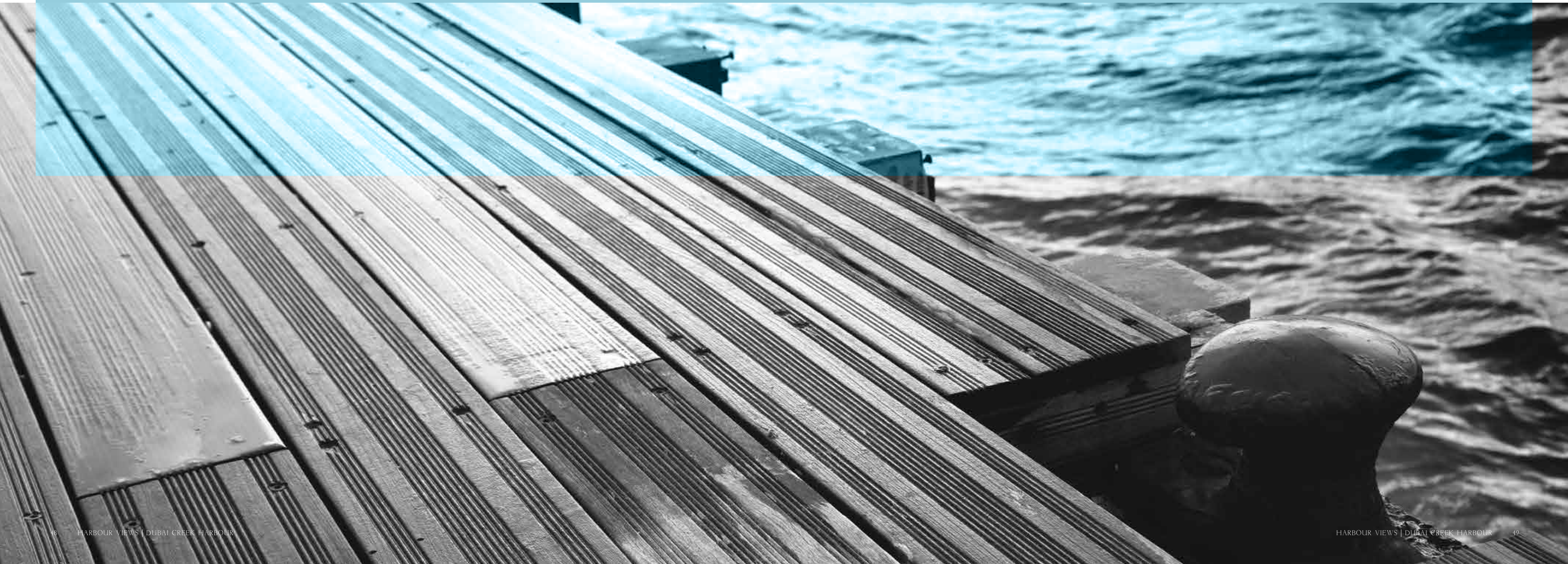
وبالدمج ما بين الحس العملي والأناقة. فقد صمم كل تفصيل من التفاصيل بدءاً من التجهيزات الأنيقة. والطاولات الحجرية الصغيرة. والحرفية الدقيقة في المطابخ. إلى وحدات الإضاءة الجذابة. والمرايا. والمناضد الرخامية في الحمامات. لتصل إلى المثالية. وهذه الحياة التي صممت على أيدي خبيرة وطورت للفخامة في هدوء، هي الحياة الفاخرة في أفضل صورها.

The luxuriously appointed apartments and villas echo the elegantly understated architecture of the towers. Specially designed to allow for spacious living and dining areas, a neutral colour palette throughout adds to the feeling of space, while the bright ceilings accentuate the height of the apartments.

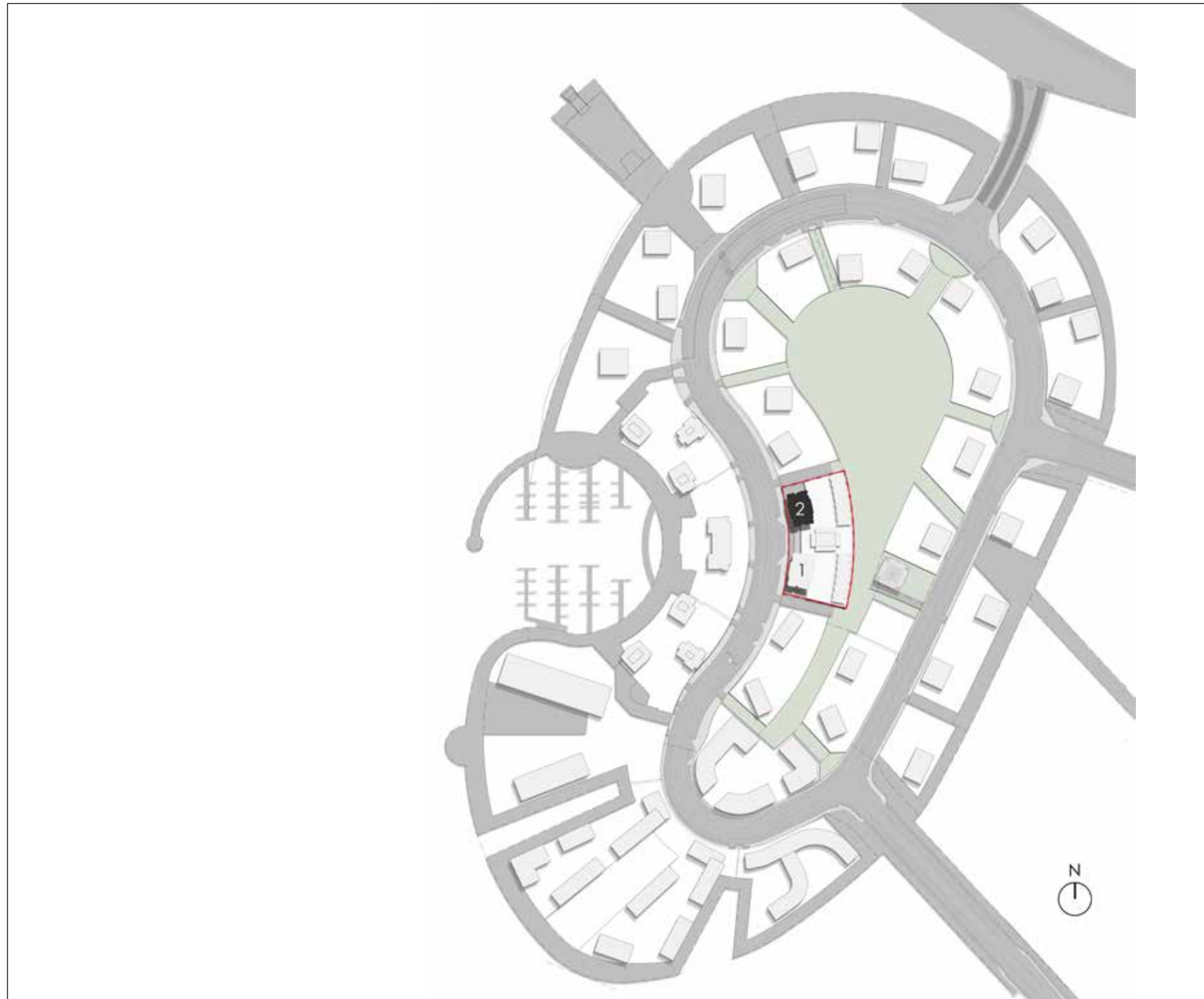
Marrying function and style, every detail – from the sleek fittings, minimal stone worktops and precise cabinetry in the kitchens, to the attractive fixtures, mirrors and marble countertops in the bathroom – has been designed to perfection. Expertly considered and quietly sophisticated, this is luxury living at its very best.



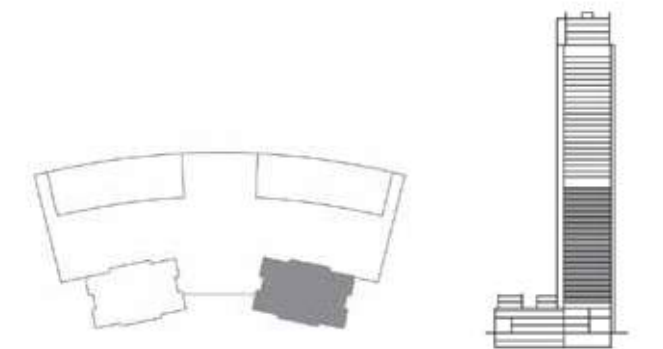
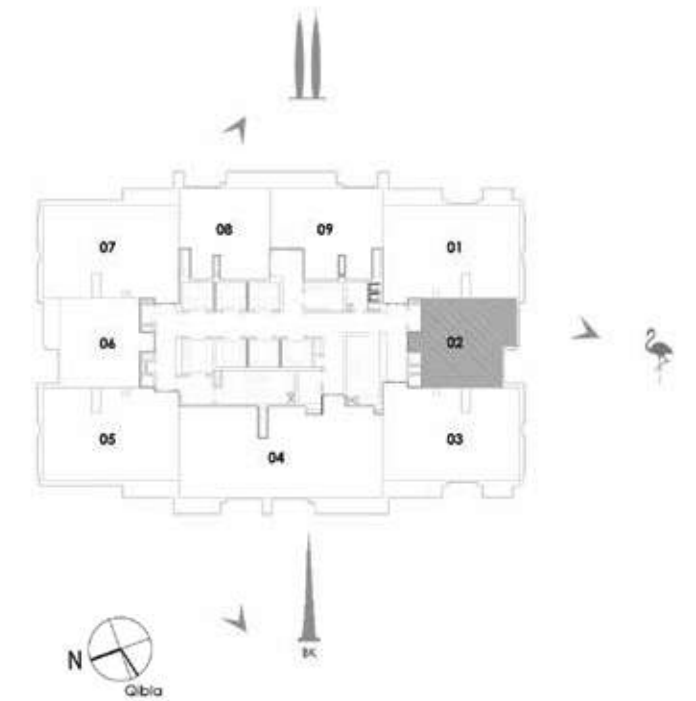
FLOOR PLANS



HARBOUR VIEWS- THE ISLAND DISTRICT SITE PLAN



I BEDROOM TOWER I



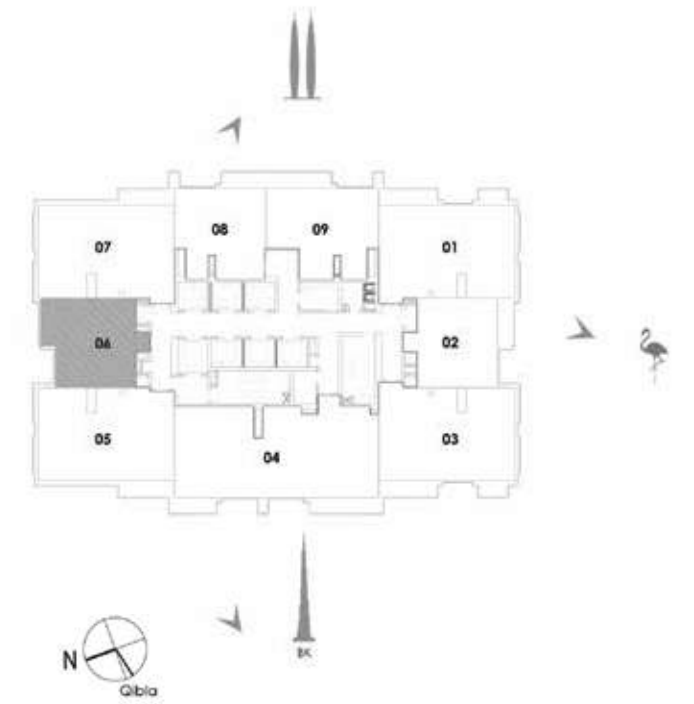
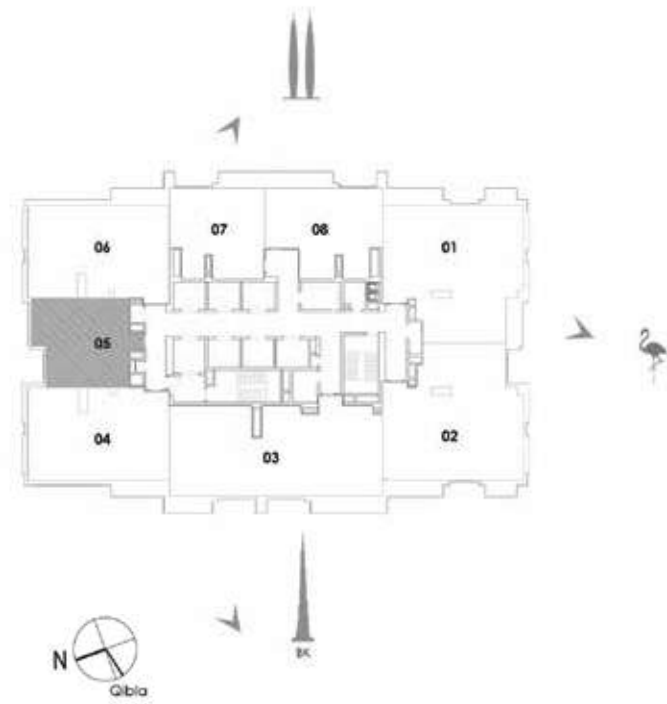
UNIT 02 / LEVEL 4-23

Suite Area	59.81 Sq.m. / 644 Sq.ft.
Balcony Area	5.87 Sq.m. / 63 Sq.ft.
Total Area	65.68 Sq.m. / 707 Sq.ft.

1. All materials, dimensions & drawings are approximate. 2. Information is subject to change without notice. 3. Actual suite area may vary from the stated area. 4. Drawings not to scale. 5. The developer reserves the right to make revisions/alterations without any liability whatsoever.

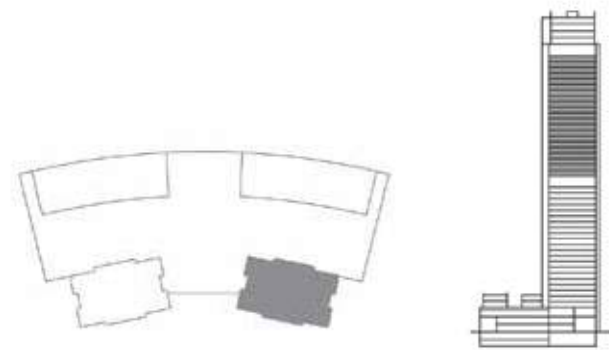
I BEDROOM TOWER I

I BEDROOM TOWER I



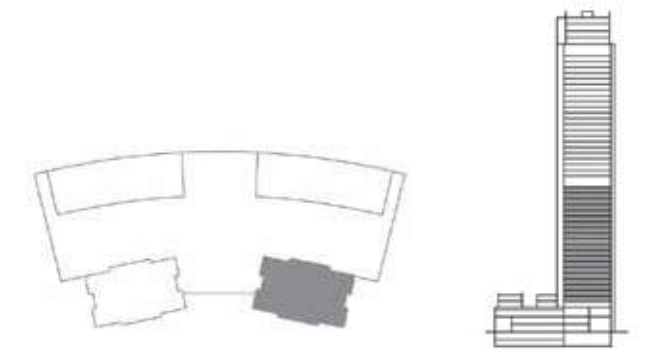
UNIT 05 / LEVEL 25-45

Suite Area	59.81 Sq.m. / 644 Sq.ft.
Balcony Area	5.87 Sq.m. / 63 Sq.ft.
Total Area	65.68 Sq.m. / 707 Sq.ft.



UNIT 06 / LEVEL 4-23

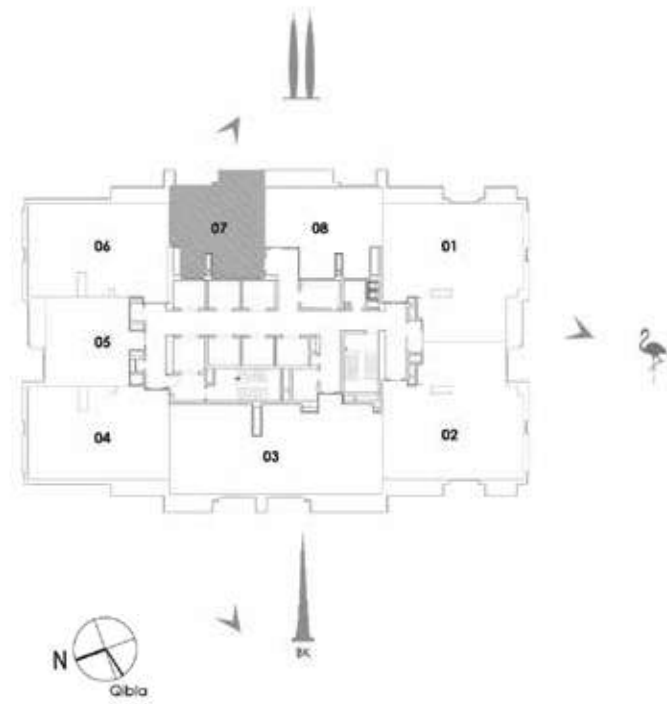
Suite Area	59.81 Sq.m. / 644 Sq.ft.
Balcony Area	5.87 Sq.m. / 63 Sq.ft.
Total Area	65.68 Sq.m. / 707 Sq.ft.



1. All materials, dimensions & drawings are approximate. 2. Information is subject to change without notice. 3. Actual suite area may vary from the stated area. 4. Drawings not to scale. 5. The developer reserves the right to make revisions/alterations without any liability whatsoever.

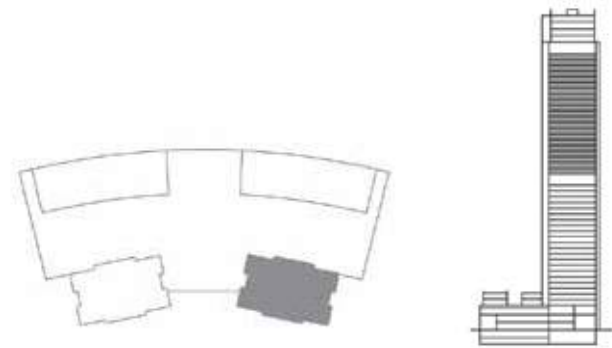
1. All materials, dimensions & drawings are approximate. 2. Information is subject to change without notice. 3. Actual suite area may vary from the stated area. 4. Drawings not to scale. 5. The developer reserves the right to make revisions/alterations without any liability whatsoever.

I BEDROOM TOWER I



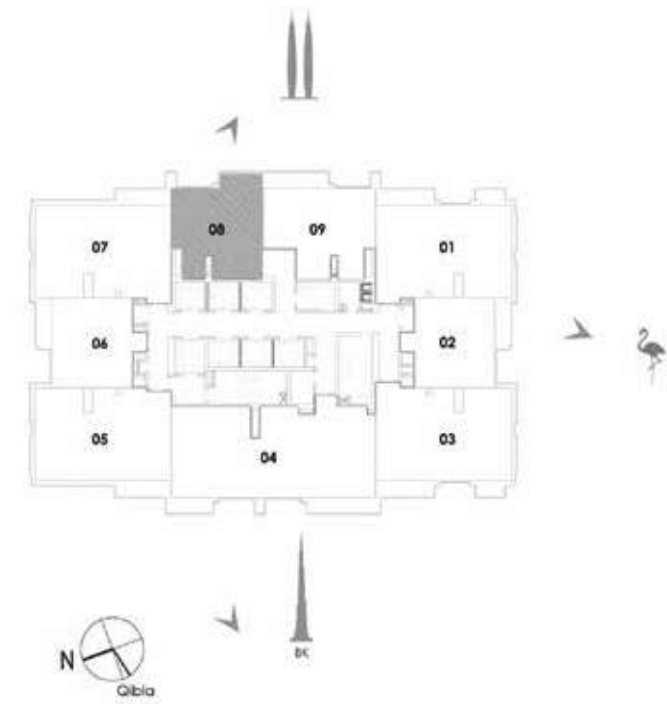
UNIT 07 / LEVEL 25-45

Suite Area	62.52 Sq.m. / 673 Sq.ft.
Balcony Area	4.14 Sq.m. / 45 Sq.ft.
Total Area	66.66 Sq.m. / 718 Sq.ft.



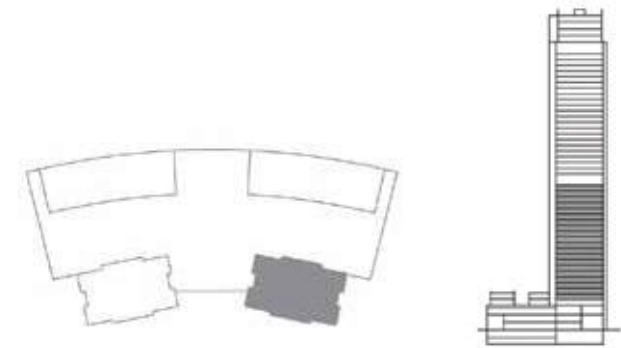
1. All materials, dimensions & drawings are approximate. 2. Information is subject to change without notice. 3. Actual suite area may vary from the stated area. 4. Drawings not to scale. 5. The developer reserves the right to make revisions/alterations without any liability whatsoever.

I BEDROOM TOWER I



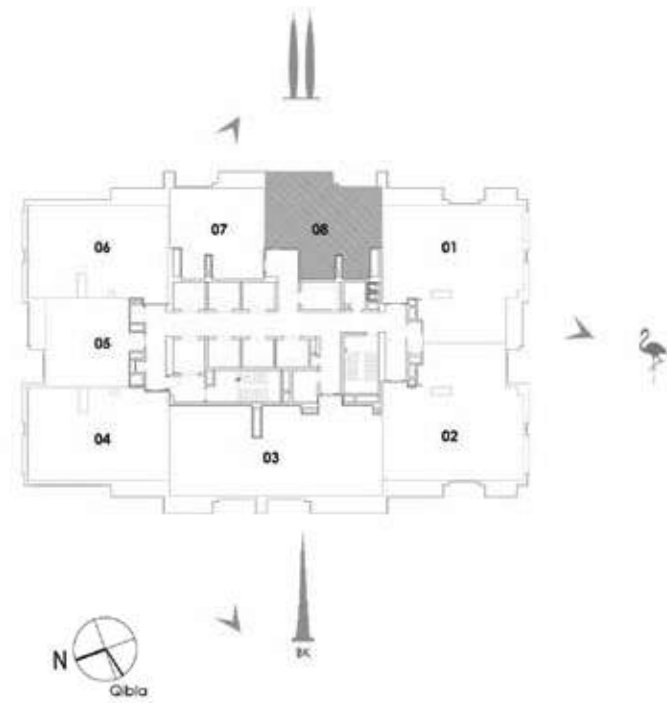
UNIT 08 / LEVEL 4-23

Suite Area	62.24 Sq.m. / 670 Sq.ft.
Balcony Area	4.14 Sq.m. / 45 Sq.ft.
Total Area	66.38 Sq.m. / 715 Sq.ft.



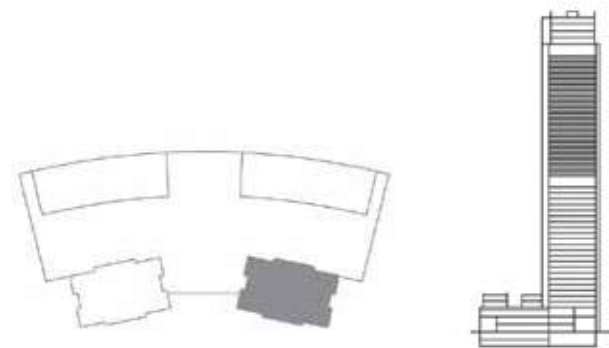
1. All materials, dimensions & drawings are approximate. 2. Information is subject to change without notice. 3. Actual suite area may vary from the stated area. 4. Drawings not to scale. 5. The developer reserves the right to make revisions/alterations without any liability whatsoever.

I BEDROOM TOWER I



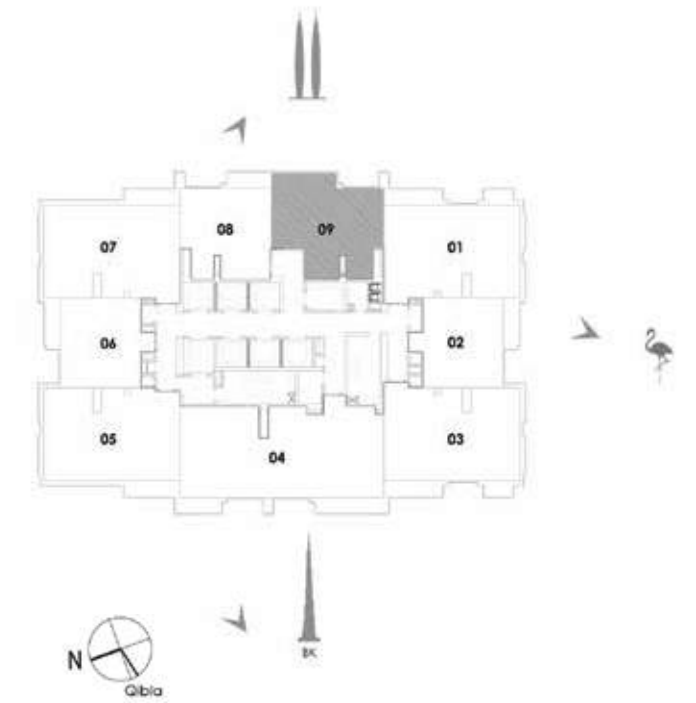
UNIT 08 / LEVEL 25-45

Suite Area	70.00 Sq.m. / 753 Sq.ft.
Balcony Area	7.40 Sq.m. / 80 Sq.ft.
Total Area	77.40 Sq.m. / 833 Sq.ft.



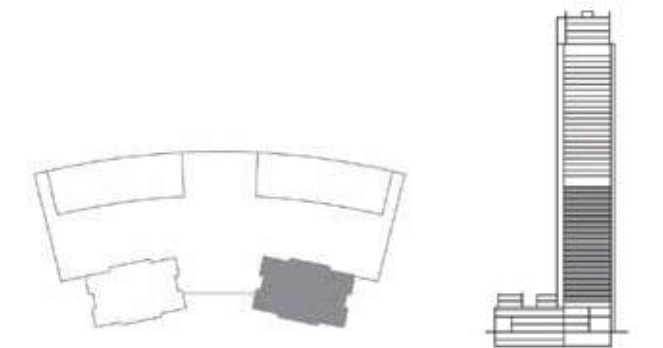
1. All materials, dimensions & drawings are approximate. 2. Information is subject to change without notice. 3. Actual suite area may vary from the stated area. 4. Drawings not to scale. 5. The developer reserves the right to make revisions/alterations without any liability whatsoever.

I BEDROOM TOWER I



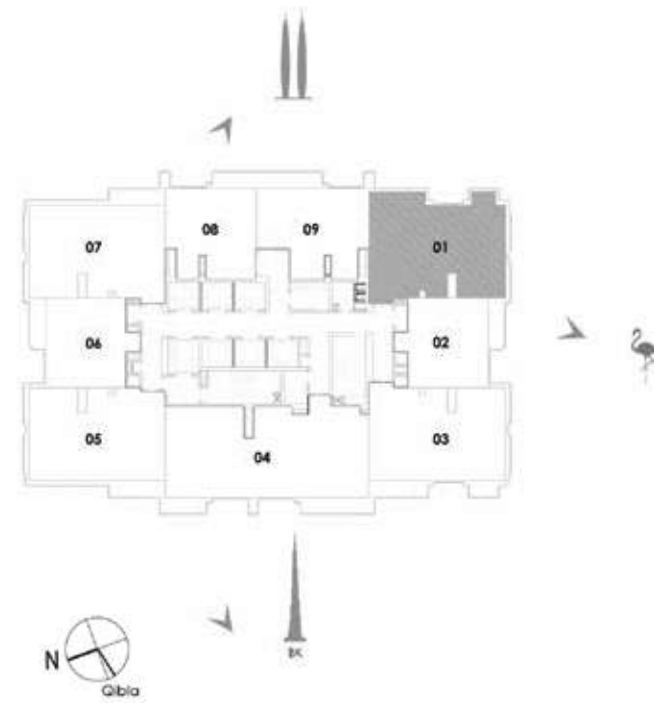
UNIT 09 / LEVEL 4-23

Suite Area	69.88 Sq.m. / 752 Sq.ft.
Balcony Area	7.40 Sq.m. / 80 Sq.ft.
Total Area	77.28 Sq.m. / 832 Sq.ft.



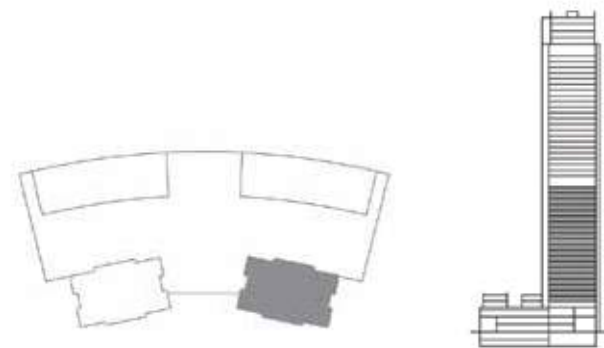
1. All materials, dimensions & drawings are approximate. 2. Information is subject to change without notice. 3. Actual suite area may vary from the stated area. 4. Drawings not to scale. 5. The developer reserves the right to make revisions/alterations without any liability whatsoever.

2 BEDROOM TOWER I



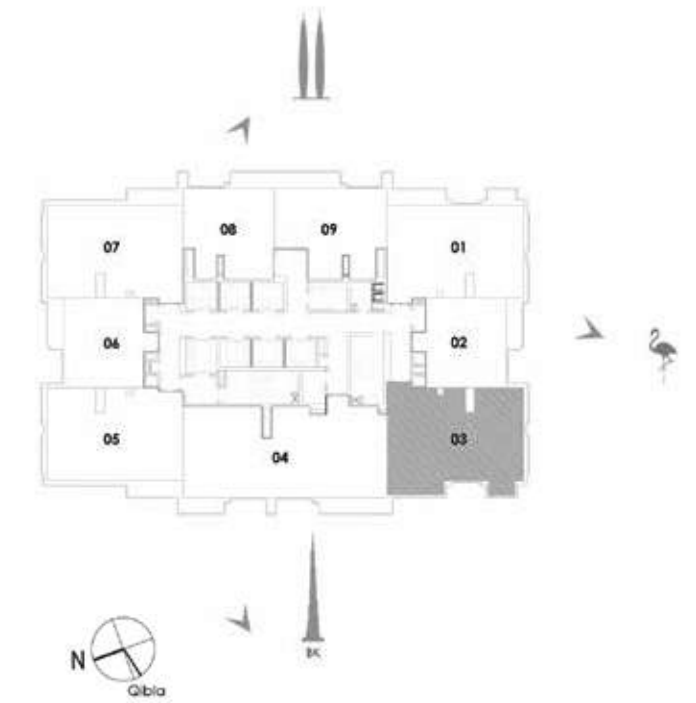
UNIT 01 / LEVEL 4-23

Suite Area	101.31 Sq.m. / 1090 Sq.ft.
Balcony Area	10.20 Sq.m. / 110 Sq.ft.
Total Area	111.51 Sq.m. / 1200 Sq.ft.



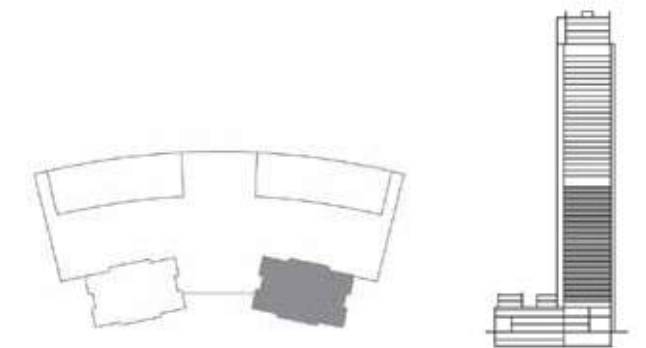
1. All materials, dimensions & drawings are approximate. 2. Information is subject to change without notice. 3. Actual suite area may vary from the stated area. 4. Drawings not to scale. 5. The developer reserves the right to make revisions/alterations without any liability whatsoever.

2 BEDROOM TOWER I



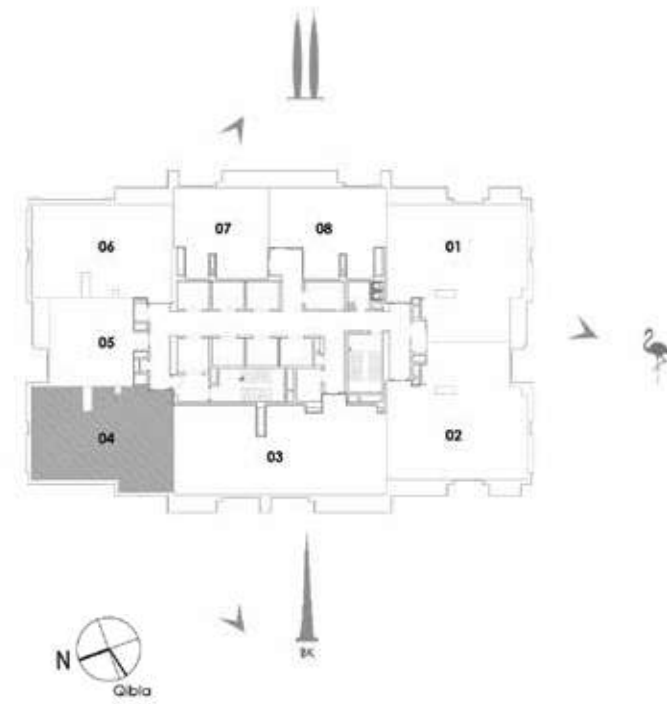
UNIT 03 / LEVEL 4-23

Suite Area	101.31 Sq.m. / 1090 Sq.ft.
Balcony Area	10.20 Sq.m. / 110 Sq.ft.
Total Area	111.51 Sq.m. / 1200 Sq.ft.



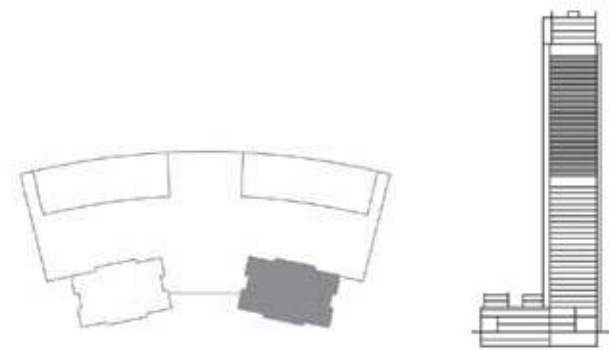
1. All materials, dimensions & drawings are approximate. 2. Information is subject to change without notice. 3. Actual suite area may vary from the stated area. 4. Drawings not to scale. 5. The developer reserves the right to make revisions/alterations without any liability whatsoever.

2 BEDROOM TOWER 1



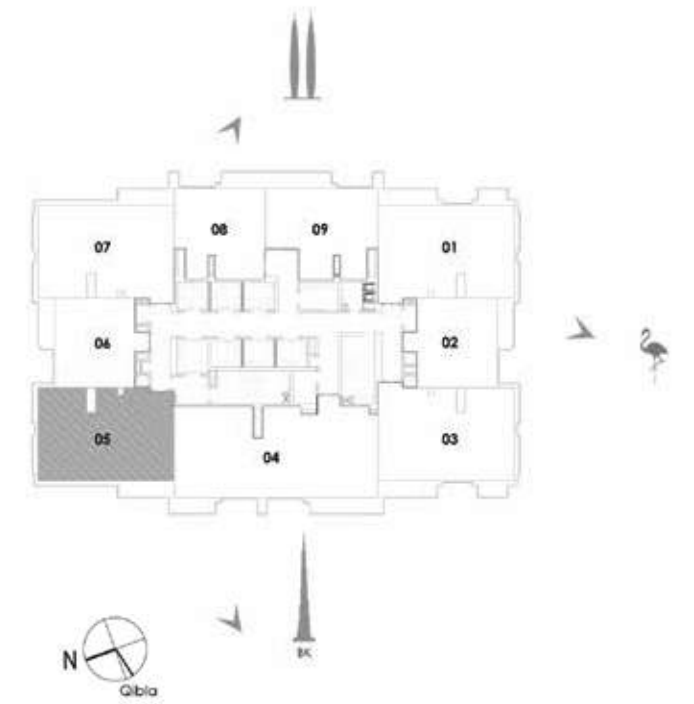
UNIT 04 / LEVEL 25-45

Suite Area	99.58 Sq.m. / 1072 Sq.ft.
Balcony Area	6.58 Sq.m. / 71 Sq.ft.
Total Area	106.16 Sq.m. / 1143 Sq.ft.



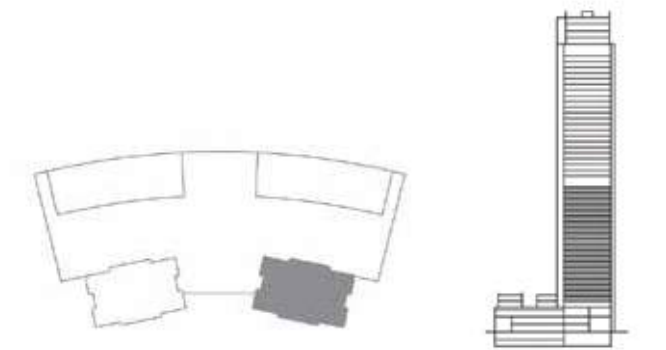
1. All materials, dimensions & drawings are approximate. 2. Information is subject to change without notice. 3. Actual suite area may vary from the stated area. 4. Drawings not to scale. 5. The developer reserves the right to make revisions/alterations without any liability whatsoever.

2 BEDROOM TOWER 1



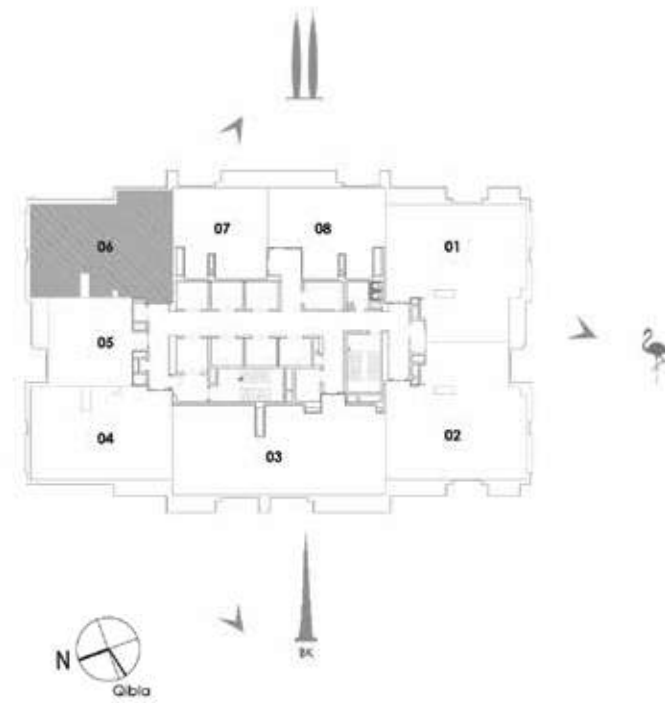
UNIT 05 / LEVEL 4-23

Suite Area	99.58 Sq.m. / 1072 Sq.ft.
Balcony Area	6.58 Sq.m. / 71 Sq.ft.
Total Area	106.16 Sq.m. / 1143 Sq.ft.



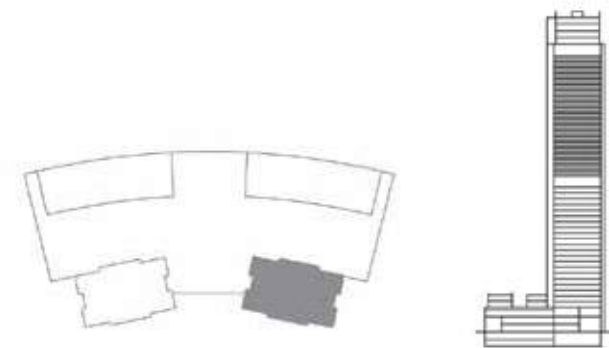
1. All materials, dimensions & drawings are approximate. 2. Information is subject to change without notice. 3. Actual suite area may vary from the stated area. 4. Drawings not to scale. 5. The developer reserves the right to make revisions/alterations without any liability whatsoever.

2 BEDROOM TOWER I



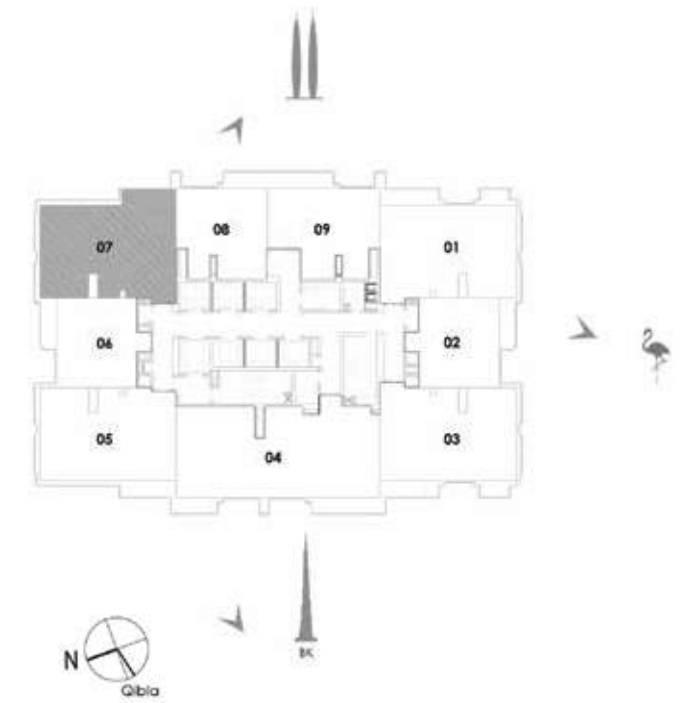
UNIT 06 / LEVEL 25-45

Suite Area	101.55 Sq.m. / 1093 Sq.ft.
Balcony Area	6.58 Sq.m. / 71 Sq.ft.
Total Area	108.13 Sq.m. / 1164 Sq.ft.



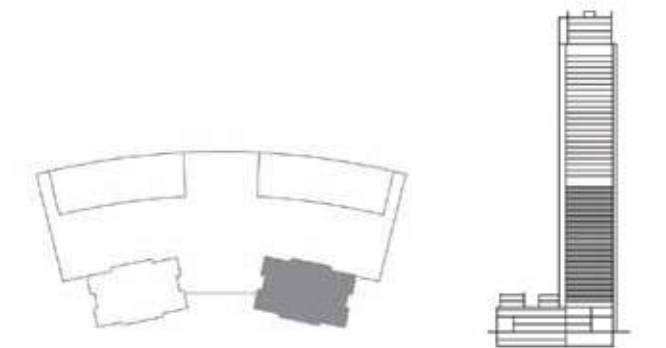
1. All materials, dimensions & drawings are approximate. 2. Information is subject to change without notice. 3. Actual suite area may vary from the stated area. 4. Drawings not to scale. 5. The developer reserves the right to make revisions/alterations without any liability whatsoever.

2 BEDROOM TOWER I



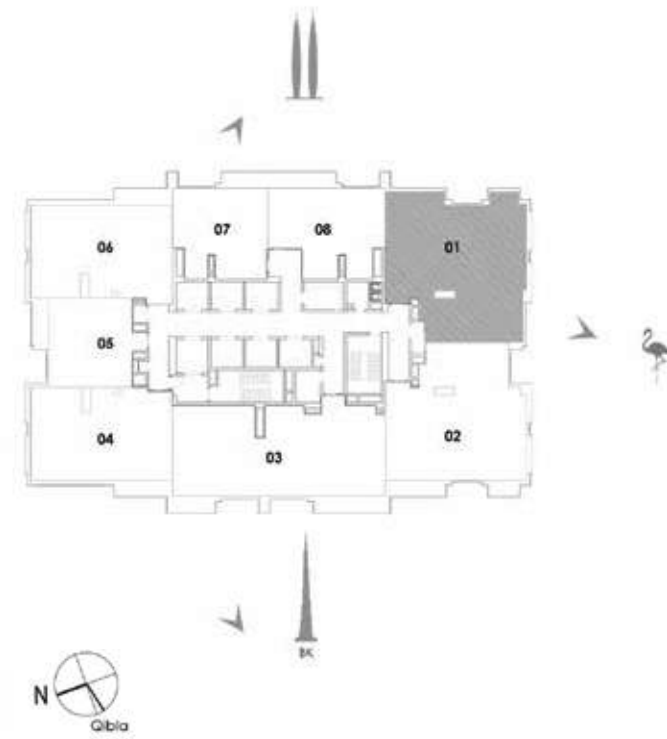
UNIT 07 / LEVEL 4-23

Suite Area	101.55 Sq.m. / 1093 Sq.ft.
Balcony Area	6.58 Sq.m. / 71 Sq.ft.
Total Area	108.13 Sq.m. / 1164 Sq.ft.



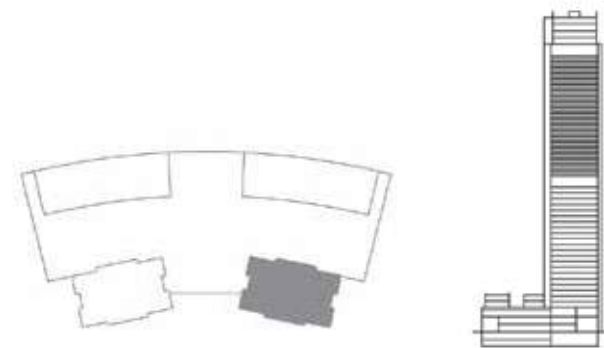
1. All materials, dimensions & drawings are approximate. 2. Information is subject to change without notice. 3. Actual suite area may vary from the stated area. 4. Drawings not to scale. 5. The developer reserves the right to make revisions/alterations without any liability whatsoever.

3 BEDROOM TOWER I



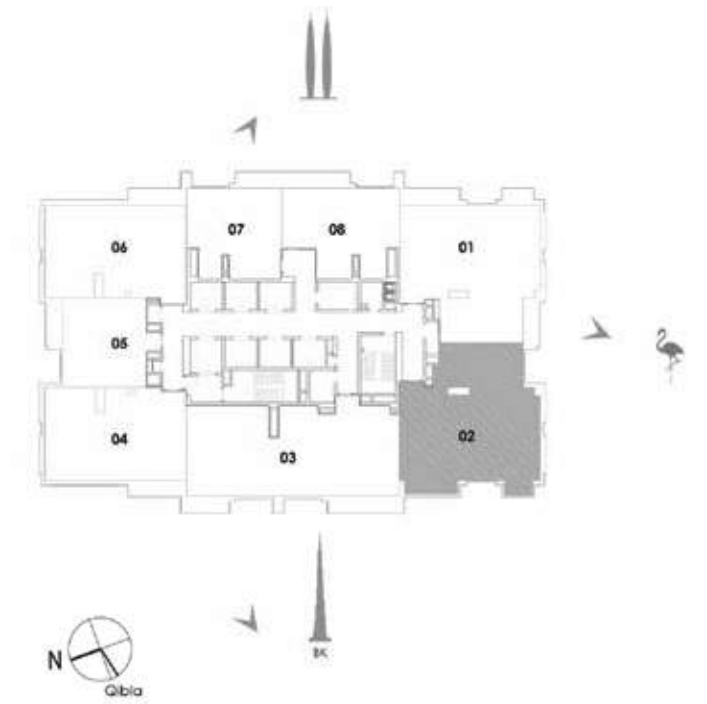
UNIT 01 / LEVEL 25-45

Suite Area	131.80 Sq.m. / 1419 Sq.ft.
Balcony Area	16.09 Sq.m. / 173 Sq.ft.
Total Area	147.89 Sq.m. / 1592 Sq.ft.



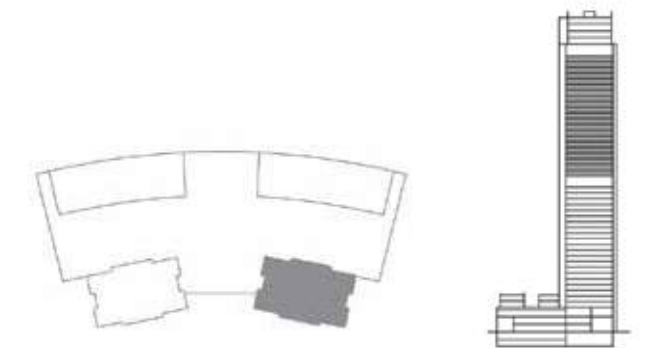
1. All materials, dimensions & drawings are approximate. 2. Information is subject to change without notice. 3. Actual suite area may vary from the stated area. 4. Drawings not to scale. 5. The developer reserves the right to make revisions/alterations without any liability whatsoever.

3 BEDROOM TOWER I



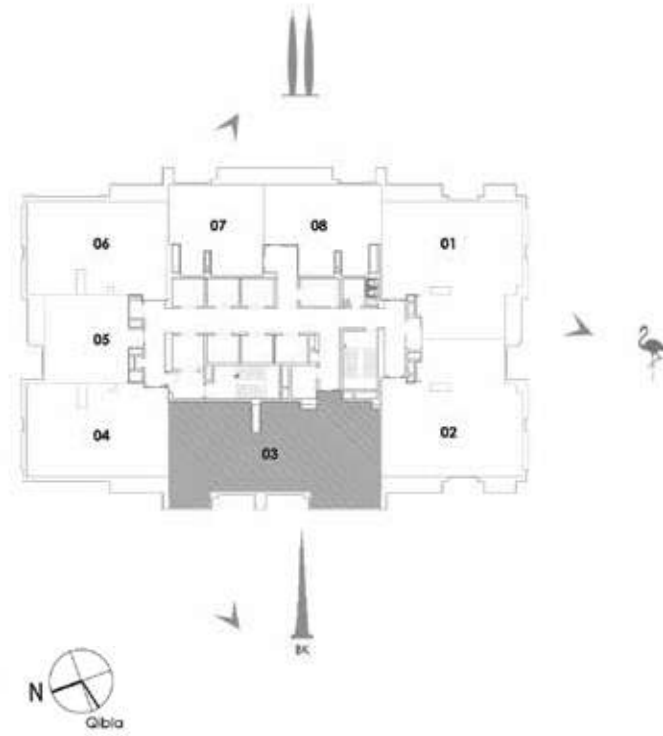
UNIT 02 / LEVEL 25-45

Suite Area	131.59 Sq.m. / 1416 Sq.ft.
Balcony Area	10.20 Sq.m. / 110 Sq.ft.
Total Area	141.79 Sq.m. / 1526 Sq.ft.



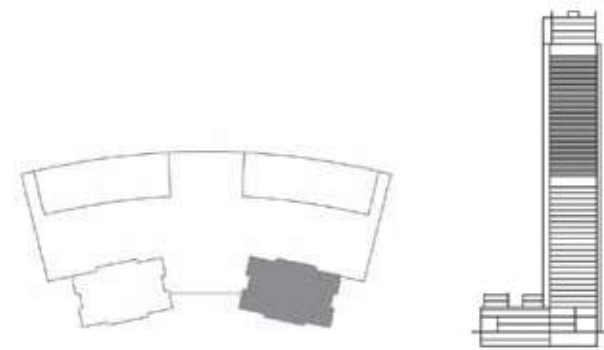
1. All materials, dimensions & drawings are approximate. 2. Information is subject to change without notice. 3. Actual suite area may vary from the stated area. 4. Drawings not to scale. 5. The developer reserves the right to make revisions/alterations without any liability whatsoever.

3 BEDROOM TOWER I



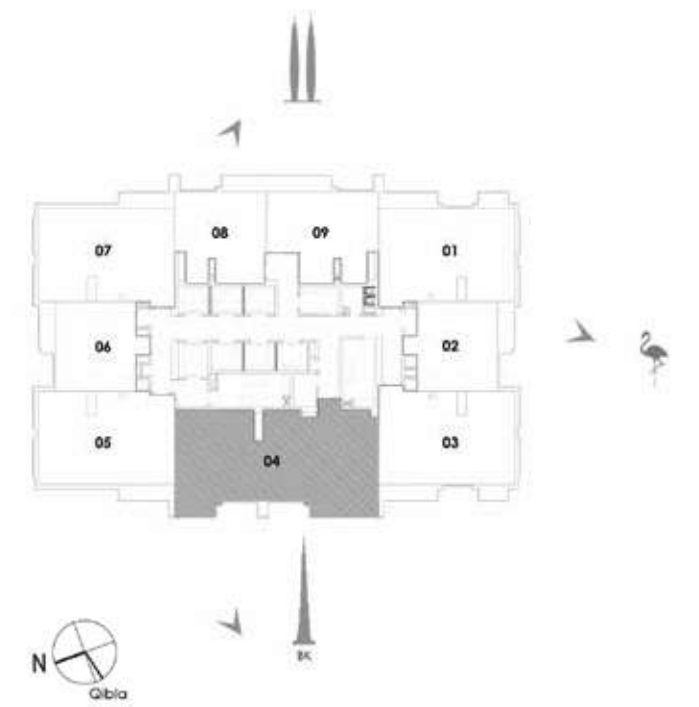
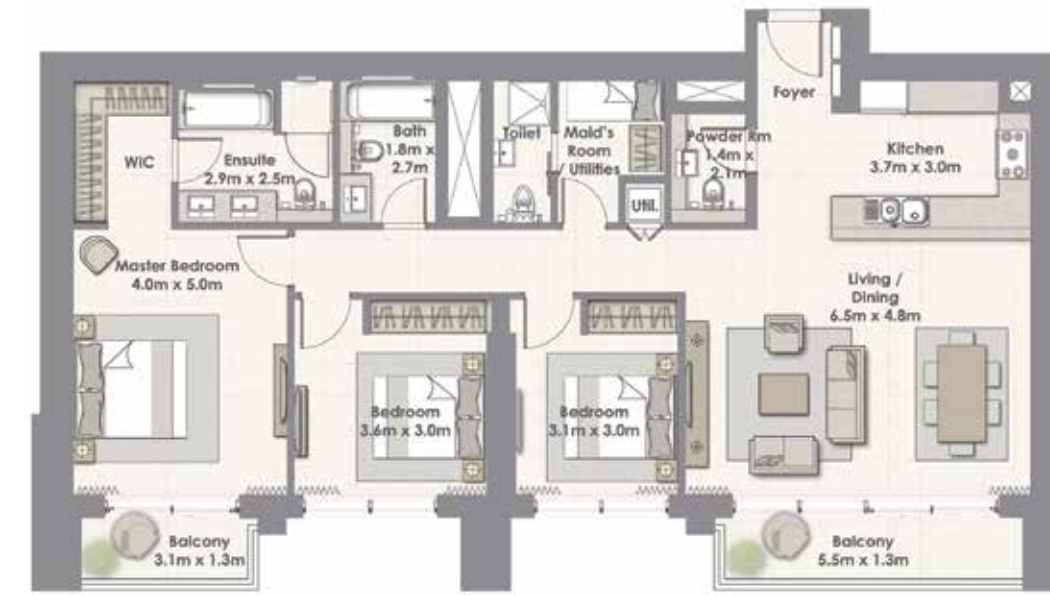
UNIT 03 / LEVEL 25-45

Suite Area	147.98 Sq.m. / 1593 Sq.ft.
Balcony Area	11.58 Sq.m. / 125 Sq.ft.
Total Area	159.56 Sq.m. / 1718 Sq.ft.



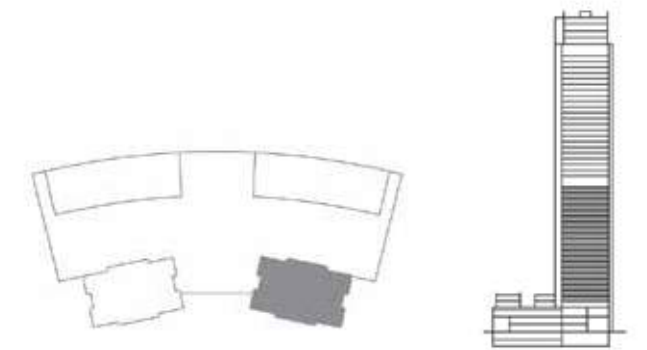
1. All materials, dimensions & drawings are approximate. 2. Information is subject to change without notice. 3. Actual suite area may vary from the stated area. 4. Drawings not to scale. 5. The developer reserves the right to make revisions/alterations without any liability whatsoever.

3 BEDROOM TOWER I



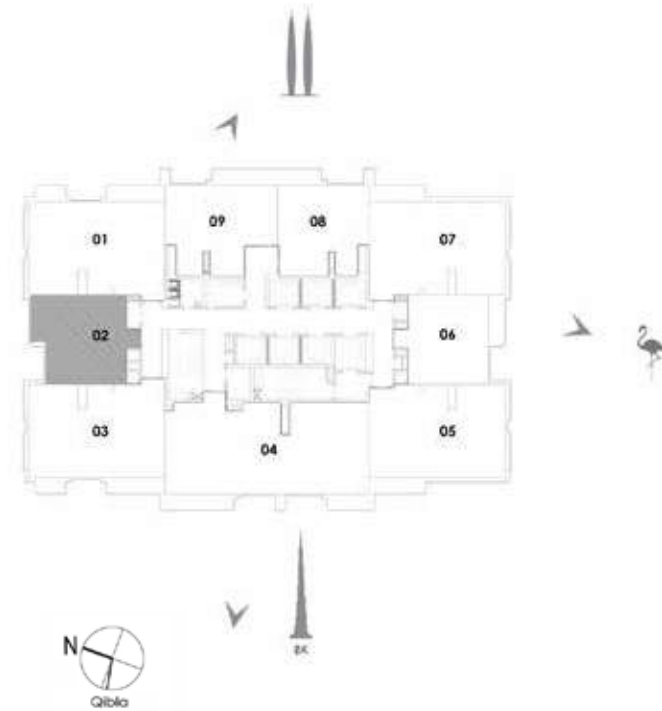
UNIT 04 / LEVEL 4-23

Suite Area	147.98 Sq.m. / 1593 Sq.ft.
Balcony Area	11.58 Sq.m. / 125 Sq.ft.
Total Area	159.56 Sq.m. / 1718 Sq.ft.



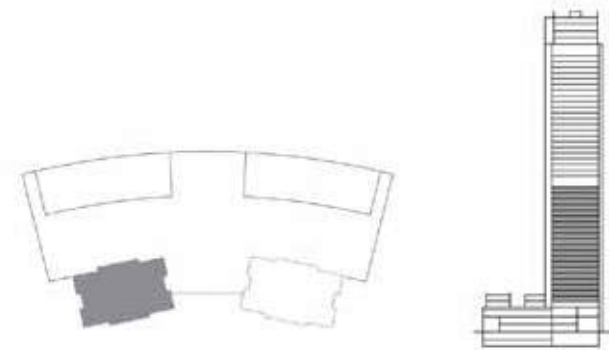
1. All materials, dimensions & drawings are approximate. 2. Information is subject to change without notice. 3. Actual suite area may vary from the stated area. 4. Drawings not to scale. 5. The developer reserves the right to make revisions/alterations without any liability whatsoever.

I BEDROOM TOWER 2



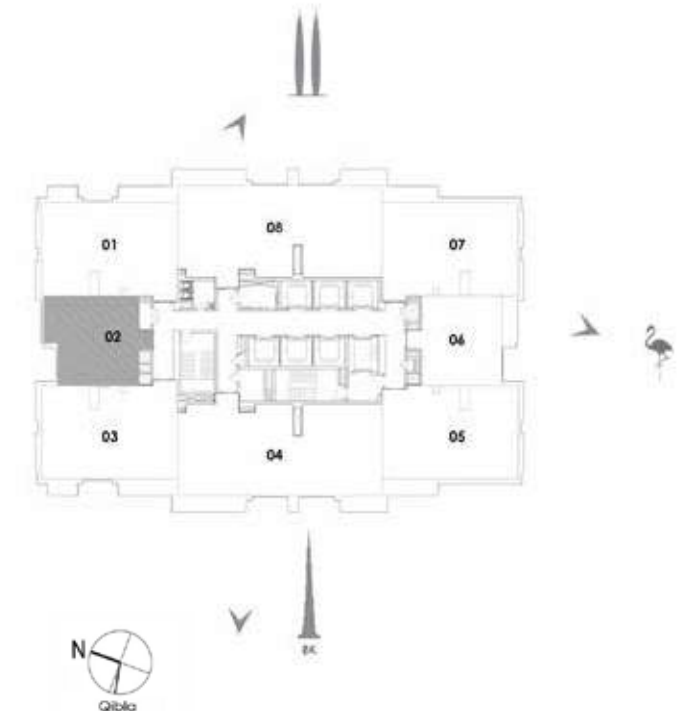
UNIT 02 / LEVEL 4-23

Suite Area	59.81 Sq.m. / 644 Sq.ft.
Balcony Area	5.87 Sq.m. / 63 Sq.ft.
Total Area	65.68 Sq.m. / 707 Sq.ft.



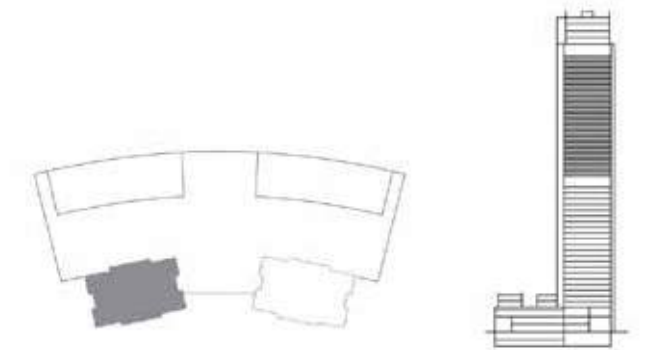
1. All materials, dimensions & drawings are approximate. 2. Information is subject to change without notice. 3. Actual suite area may vary from the stated area. 4. Drawings not to scale. 5. The developer reserves the right to make revisions/alterations without any liability whatsoever.

I BEDROOM TOWER 2



UNIT 02 / LEVEL 25-45

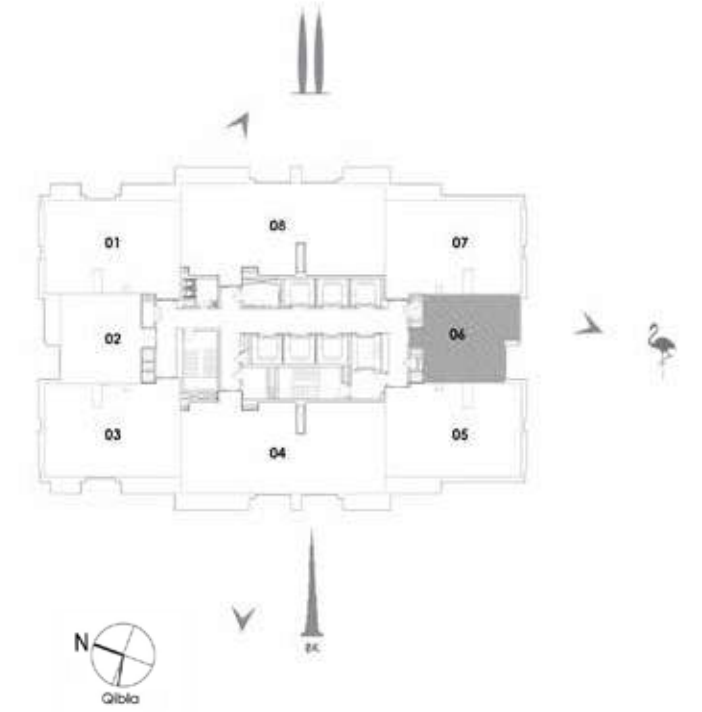
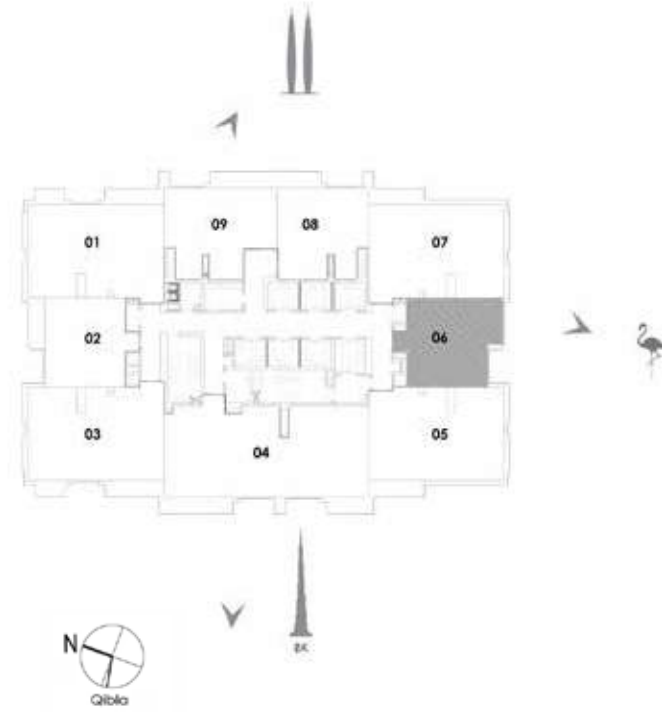
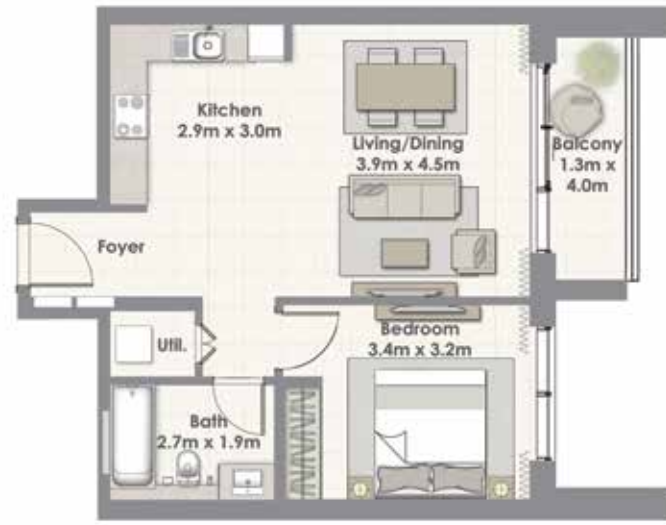
Suite Area	59.81 Sq.m. / 644 Sq.ft.
Balcony Area	5.87 Sq.m. / 63 Sq.ft.
Total Area	65.68 Sq.m. / 707 Sq.ft.



1. All materials, dimensions & drawings are approximate. 2. Information is subject to change without notice. 3. Actual suite area may vary from the stated area. 4. Drawings not to scale. 5. The developer reserves the right to make revisions/alterations without any liability whatsoever.

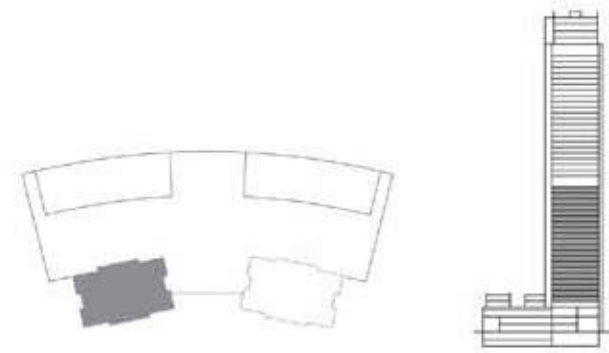
I BEDROOM TOWER 2

I BEDROOM TOWER 2



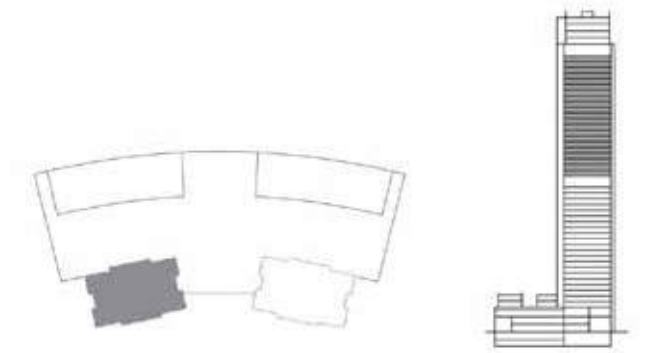
UNIT 06 / LEVEL 4-23

Suite Area	59.81 Sq.m. / 644 Sq.ft.
Balcony Area	5.87 Sq.m. / 63 Sq.ft.
Total Area	65.68 Sq.m. / 707 Sq.ft.



UNIT 06 / LEVEL 24-45

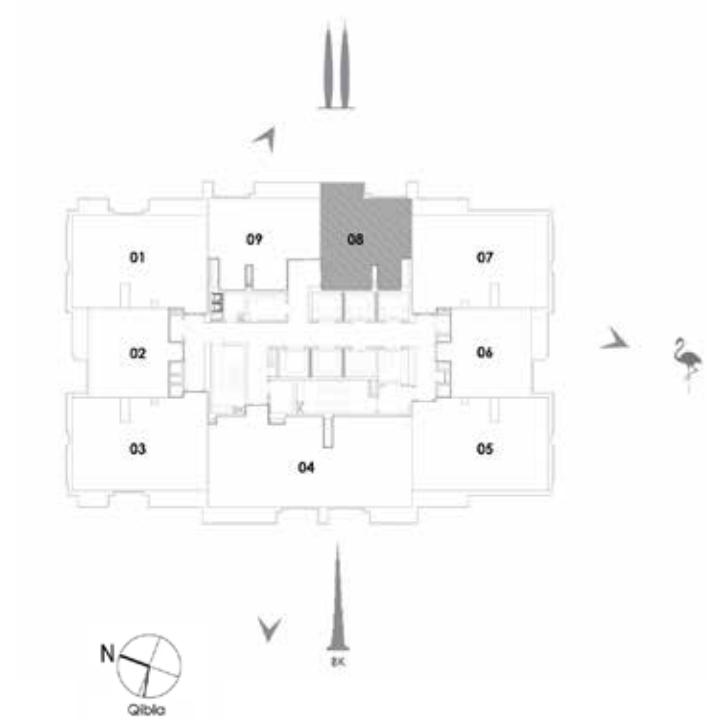
Suite Area	59.81 Sq.m. / 644 Sq.ft.
Balcony Area	5.87 Sq.m. / 63 Sq.ft.
Total Area	65.68 Sq.m. / 707 Sq.ft.



1. All materials, dimensions & drawings are approximate. 2. Information is subject to change without notice. 3. Actual suite area may vary from the stated area. 4. Drawings not to scale. 5. The developer reserves the right to make revisions/alterations without any liability whatsoever.

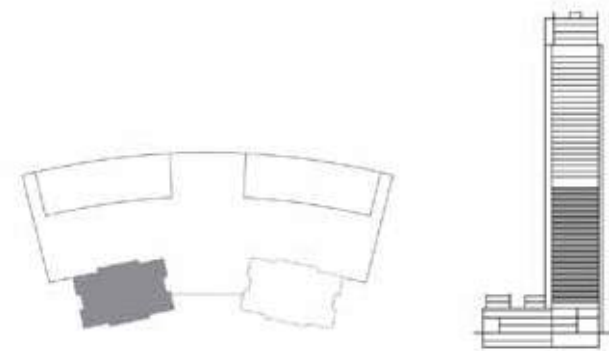
1. All materials, dimensions & drawings are approximate. 2. Information is subject to change without notice. 3. Actual suite area may vary from the stated area. 4. Drawings not to scale. 5. The developer reserves the right to make revisions/alterations without any liability whatsoever.

I BEDROOM TOWER 2



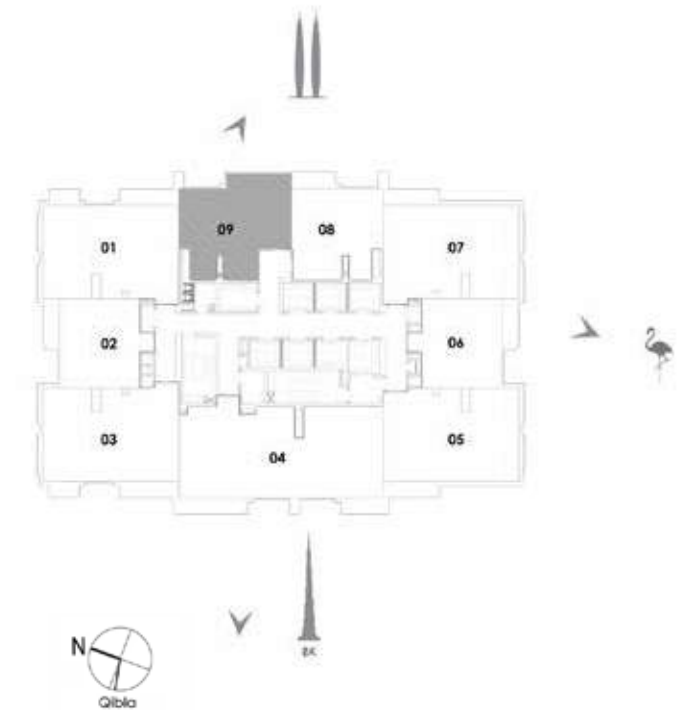
UNIT 08 / LEVEL 4-23

Suite Area	62.24 Sq.m. / 670 Sq.ft.
Balcony Area	5.52 Sq.m. / 59 Sq.ft.
Total Area	67.76 Sq.m. / 729 Sq.ft.



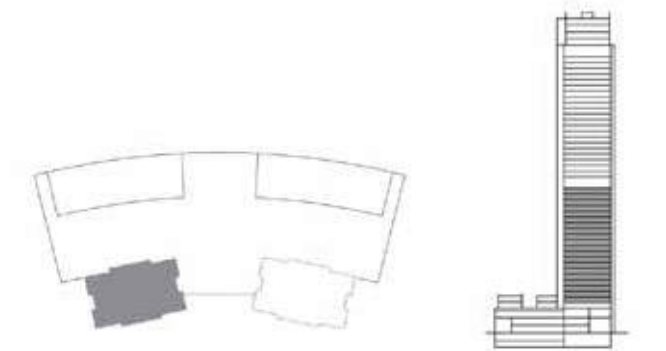
1. All materials, dimensions & drawings are approximate. 2. Information is subject to change without notice. 3. Actual suite area may vary from the stated area. 4. Drawings not to scale. 5. The developer reserves the right to make revisions/alterations without any liability whatsoever.

I BEDROOM TOWER 2



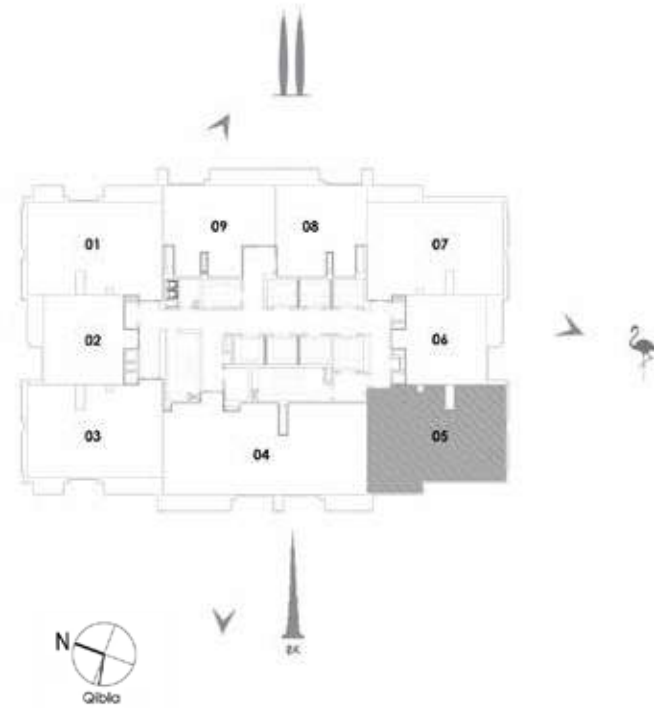
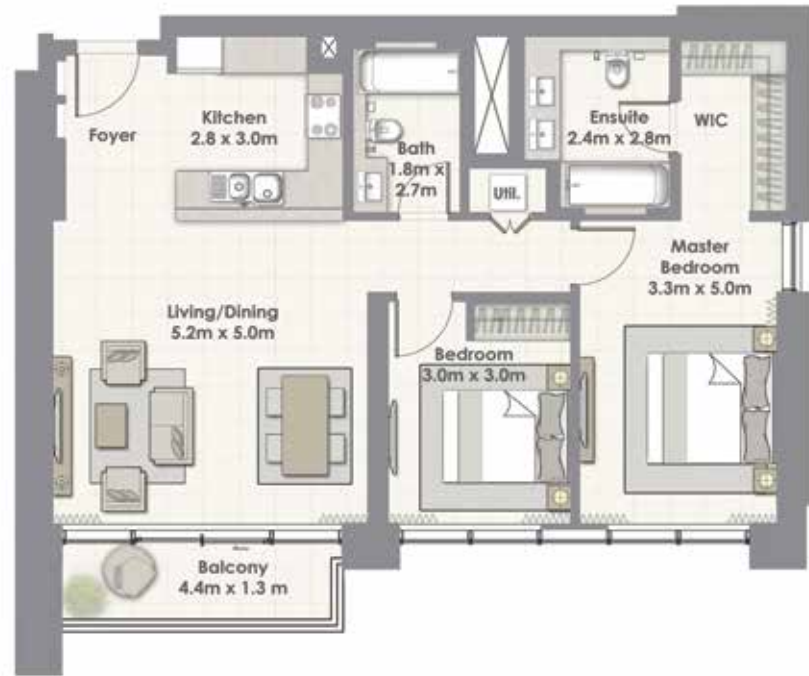
UNIT 09 / LEVEL 4-23

Suite Area	69.88 Sq.m. / 752 Sq.ft.
Balcony Area	6.89 Sq.m. / 74 Sq.ft.
Total Area	76.77 Sq.m. / 826 Sq.ft.



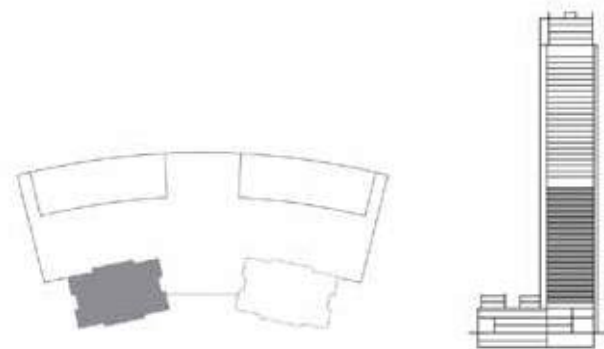
1. All materials, dimensions & drawings are approximate. 2. Information is subject to change without notice. 3. Actual suite area may vary from the stated area. 4. Drawings not to scale. 5. The developer reserves the right to make revisions/alterations without any liability whatsoever.

2 BEDROOM TOWER 2



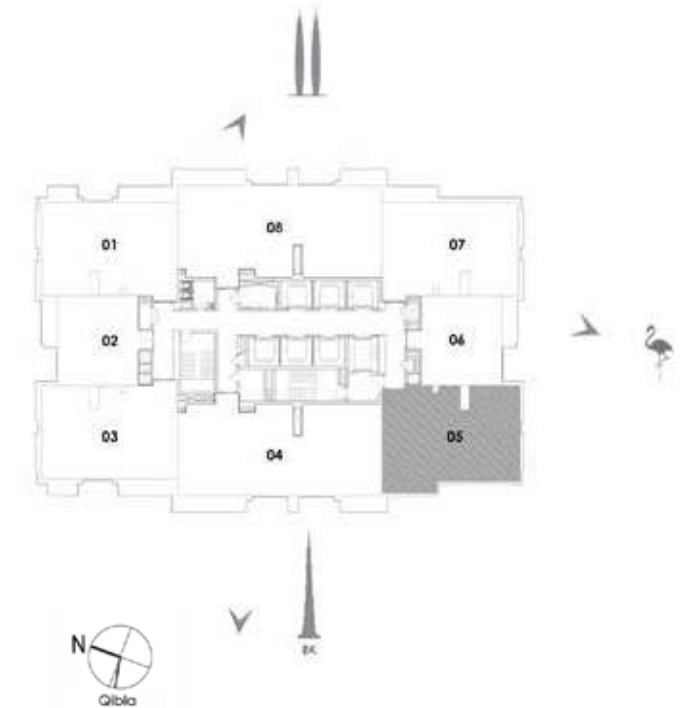
UNIT 05 / LEVEL 4-23

Suite Area	99.58 Sq.m. / 1072 Sq.ft.
Balcony Area	6.58 Sq.m. / 71 Sq.ft.
Total Area	106.16 Sq.m. / 1143 Sq.ft.



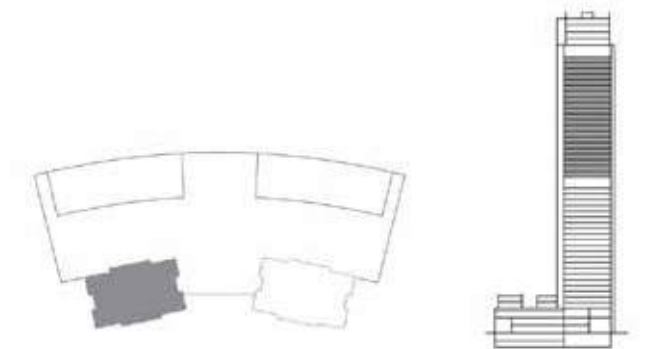
1. All materials, dimensions & drawings are approximate. 2. Information is subject to change without notice. 3. Actual suite area may vary from the stated area. 4. Drawings not to scale. 5. The developer reserves the right to make revisions/alterations without any liability whatsoever.

2 BEDROOM TOWER 2



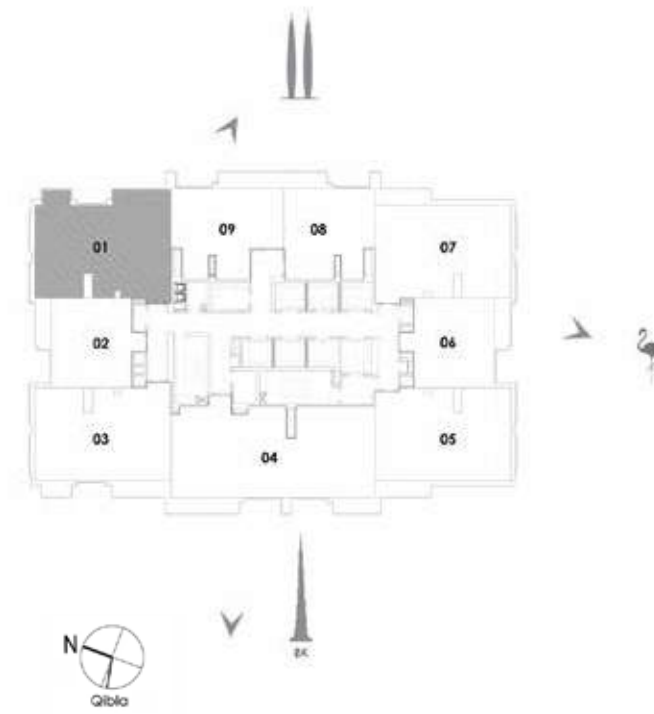
UNIT 05 / LEVEL 25-45

Suite Area	99.58 Sq.m. / 1072 Sq.ft.
Balcony Area	6.58 Sq.m. / 71 Sq.ft.
Total Area	106.16 Sq.m. / 1143 Sq.ft.



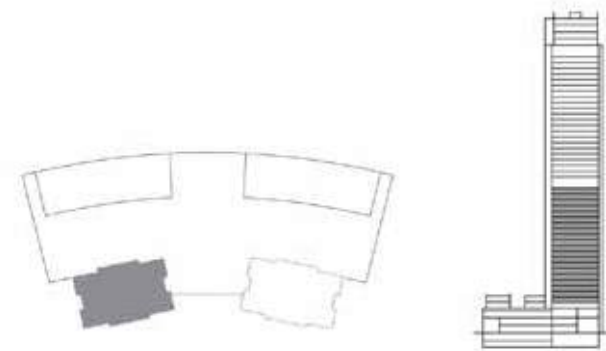
1. All materials, dimensions & drawings are approximate. 2. Information is subject to change without notice. 3. Actual suite area may vary from the stated area. 4. Drawings not to scale. 5. The developer reserves the right to make revisions/alterations without any liability whatsoever.

2 BEDROOM TOWER 2



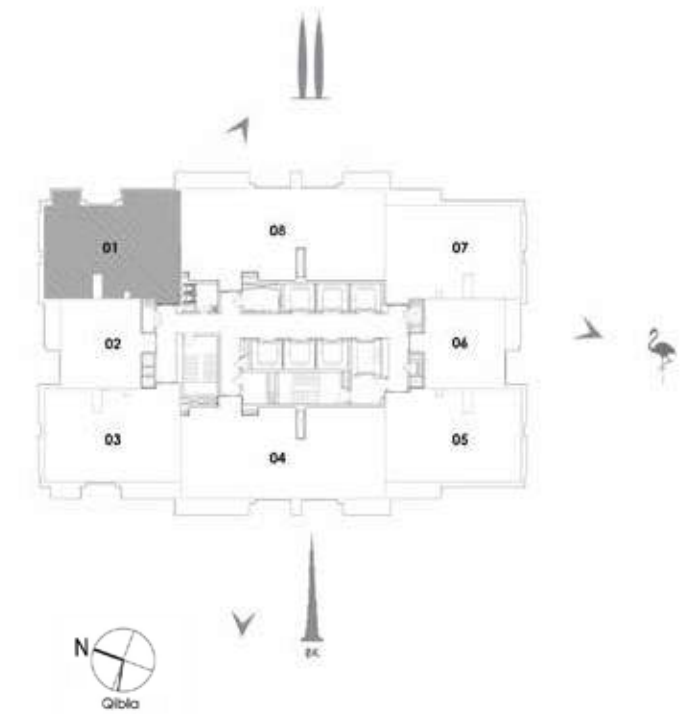
UNIT 01 / LEVEL 4-23

Suite Area	101.31 Sq.m. / 1090 Sq.ft.
Balcony Area	10.20 Sq.m. / 110 Sq.ft.
Total Area	111.51 Sq.m. / 1200 Sq.ft.



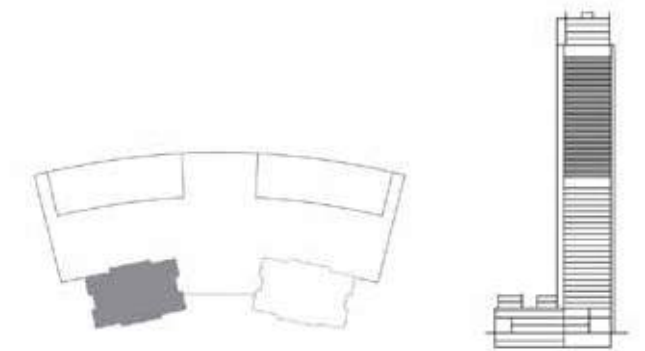
1. All materials, dimensions & drawings are approximate. 2. Information is subject to change without notice. 3. Actual suite area may vary from the stated area. 4. Drawings not to scale. 5. The developer reserves the right to make revisions/alterations without any liability whatsoever.

2 BEDROOM TOWER 2



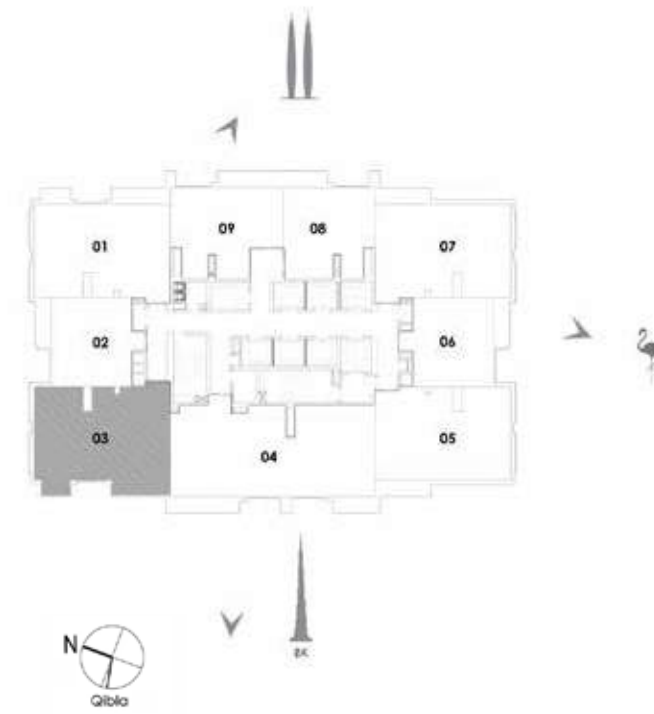
UNIT 01 / LEVEL 25-45

Suite Area	101.31 Sq.m. / 1090 Sq.ft.
Balcony Area	10.20 Sq.m. / 110 Sq.ft.
Total Area	111.51 Sq.m. / 1200 Sq.ft.



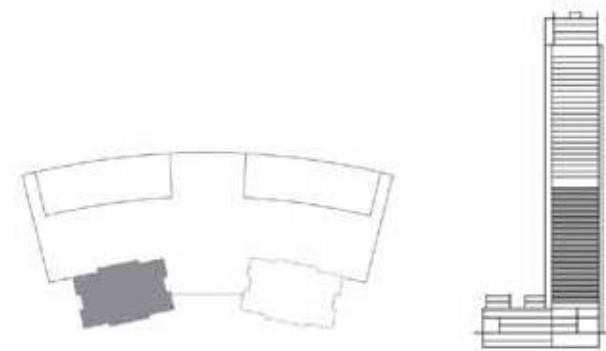
1. All materials, dimensions & drawings are approximate. 2. Information is subject to change without notice. 3. Actual suite area may vary from the stated area. 4. Drawings not to scale. 5. The developer reserves the right to make revisions/alterations without any liability whatsoever.

2 BEDROOM TOWER 2



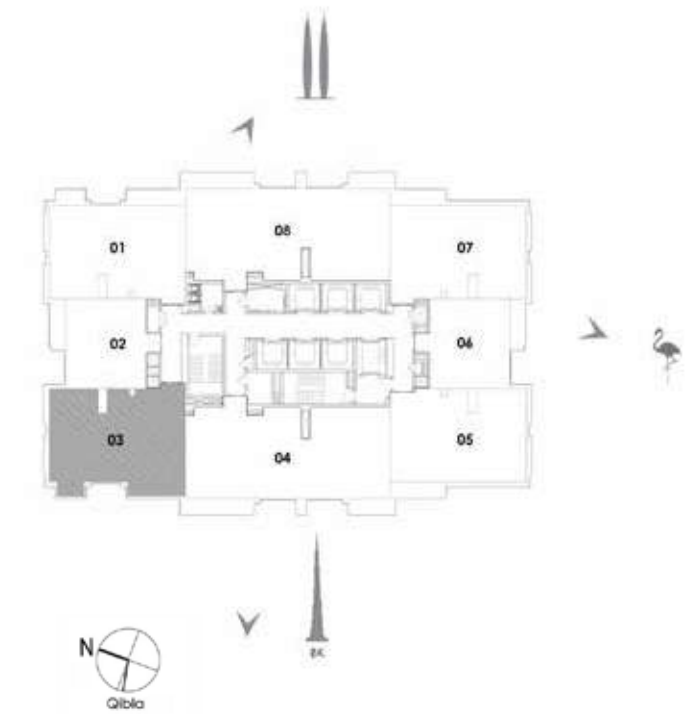
UNIT 03 / LEVEL 4-23

Suite Area	101.31 Sq.m. / 1090 Sq.ft.
Balcony Area	10.20 Sq.m. / 110 Sq.ft.
Total Area	111.51 Sq.m. / 1200 Sq.ft.



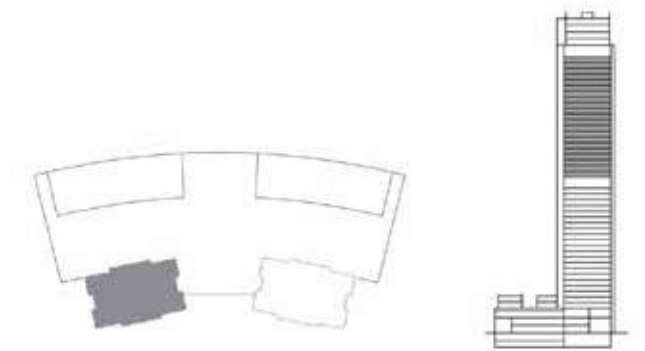
1. All materials, dimensions & drawings are approximate. 2. Information is subject to change without notice. 3. Actual suite area may vary from the stated area. 4. Drawings not to scale. 5. The developer reserves the right to make revisions/alterations without any liability whatsoever.

2 BEDROOM TOWER 2



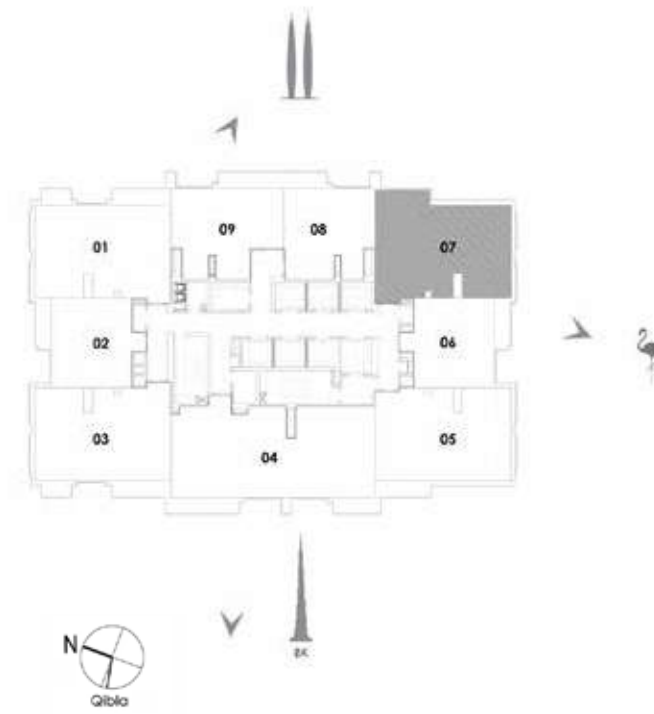
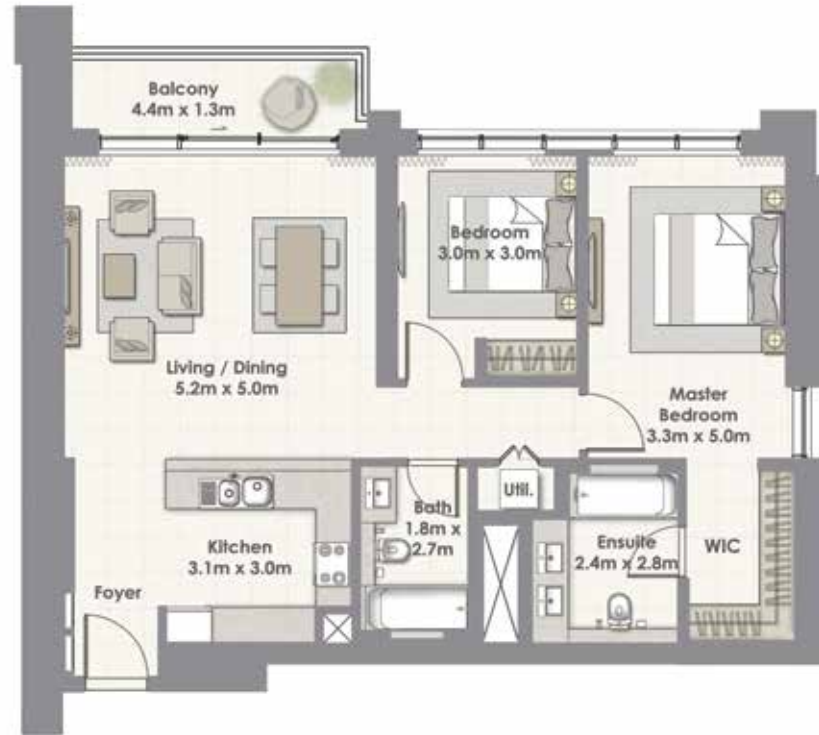
UNIT 03 / LEVEL 25-45

Suite Area	101.31 Sq.m. / 1090 Sq.ft.
Balcony Area	10.20 Sq.m. / 110 Sq.ft.
Total Area	111.51 Sq.m. / 1200 Sq.ft.



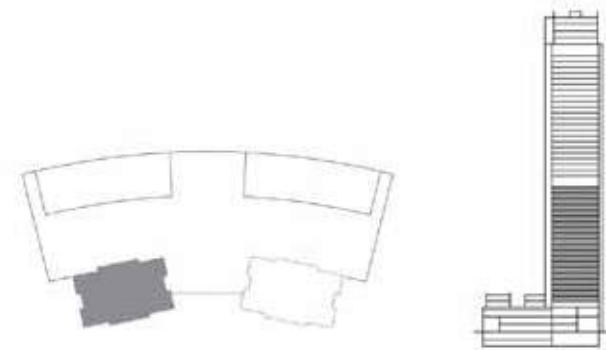
1. All materials, dimensions & drawings are approximate. 2. Information is subject to change without notice. 3. Actual suite area may vary from the stated area. 4. Drawings not to scale. 5. The developer reserves the right to make revisions/alterations without any liability whatsoever.

2 BEDROOM TOWER 2



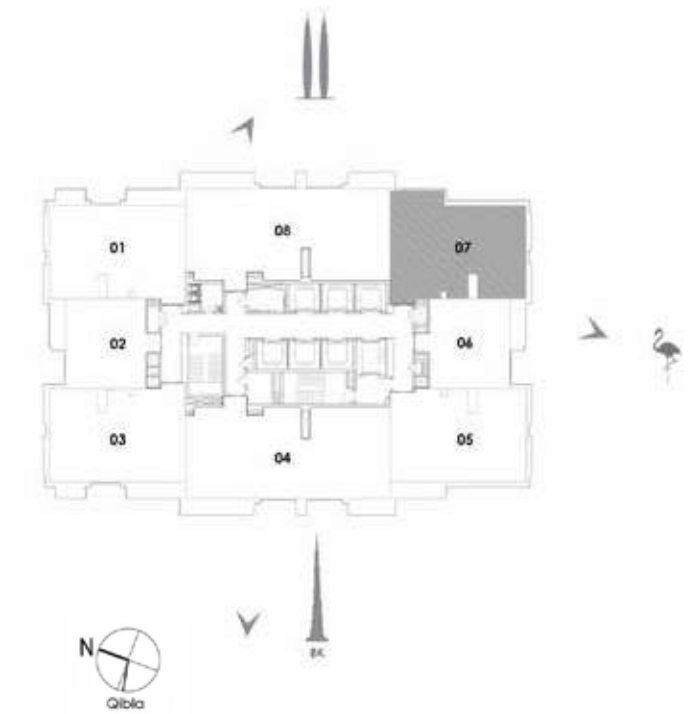
UNIT 07 / LEVEL 4-23

Suite Area	101.55 Sq.m. / 1093 Sq.ft.
Balcony Area	6.58 Sq.m. / 71 Sq.ft.
Total Area	108.13 Sq.m. / 1164 Sq.ft.



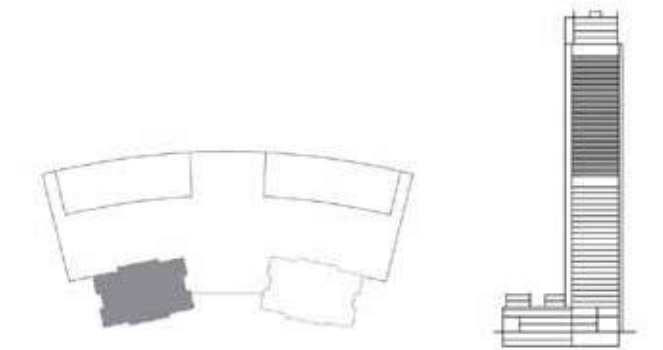
1. All materials, dimensions & drawings are approximate. 2. Information is subject to change without notice. 3. Actual suite area may vary from the stated area. 4. Drawings not to scale. 5. The developer reserves the right to make revisions/alterations without any liability whatsoever.

2 BEDROOM TOWER 2



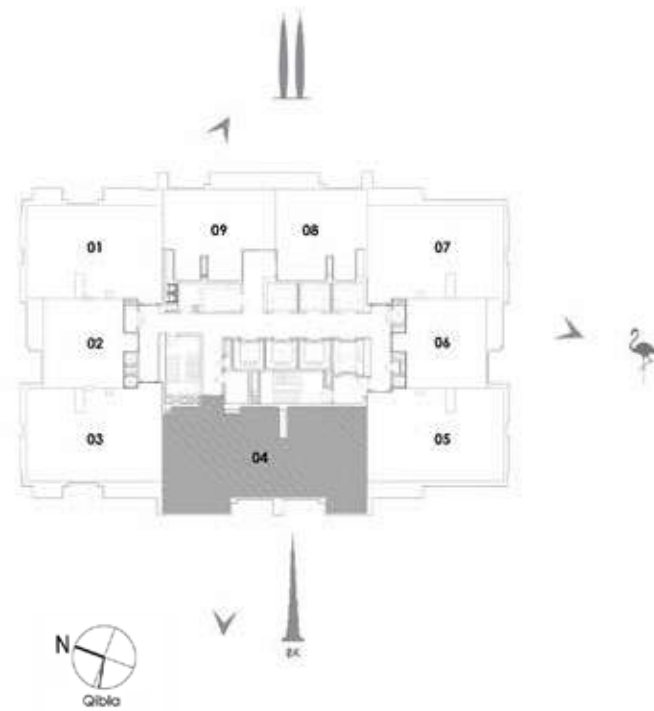
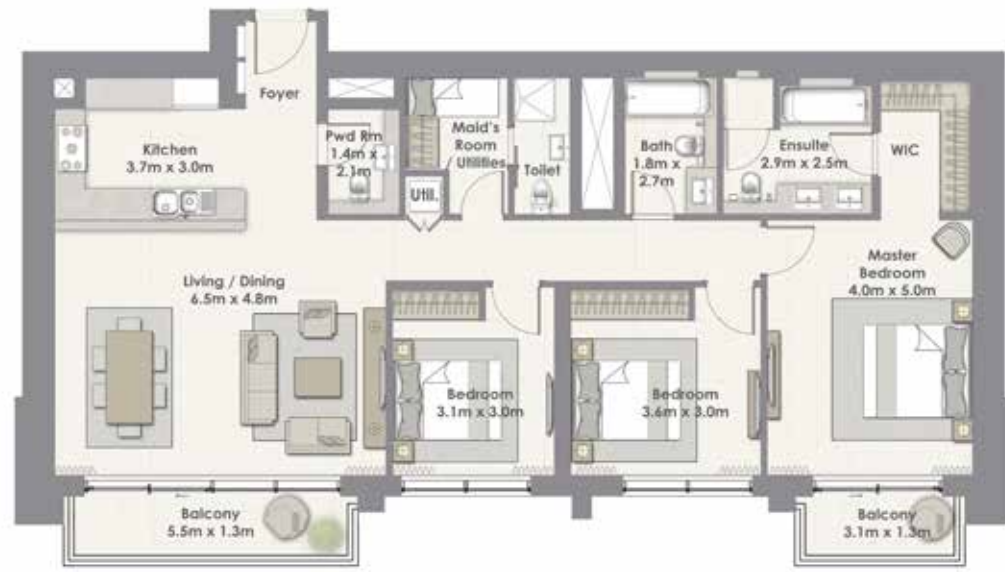
UNIT 07 / LEVEL 25-45

Suite Area	101.55 Sq.m. / 1093 Sq.ft.
Balcony Area	6.58 Sq.m. / 71 Sq.ft.
Total Area	108.13 Sq.m. / 1164 Sq.ft.



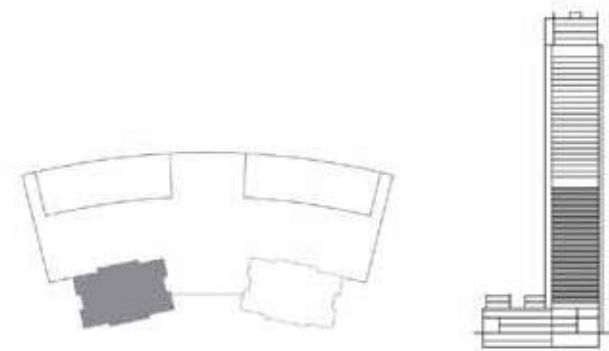
1. All materials, dimensions & drawings are approximate. 2. Information is subject to change without notice. 3. Actual suite area may vary from the stated area. 4. Drawings not to scale. 5. The developer reserves the right to make revisions/alterations without any liability whatsoever.

3 BEDROOM TOWER 2



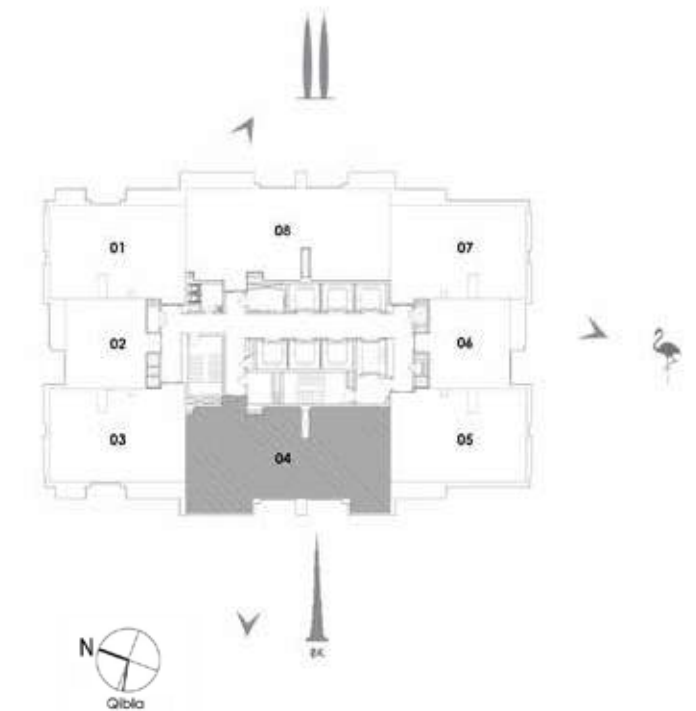
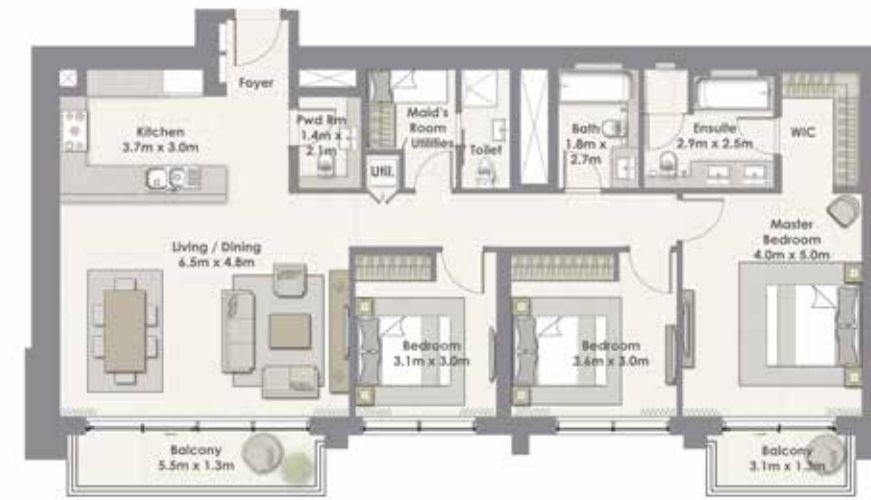
UNIT 04 / LEVEL 4-23

Suite Area	147.98 Sq.m. / 1593 Sq.ft.
Balcony Area	11.58 Sq.m. / 125 Sq.ft.
Total Area	159.56 Sq.m. / 1718 Sq.ft.



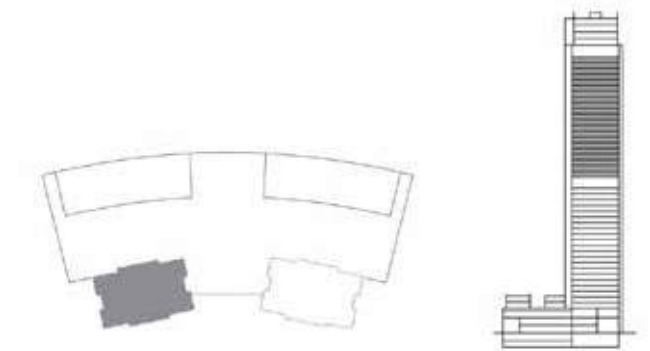
1. All materials, dimensions & drawings are approximate. 2. Information is subject to change without notice. 3. Actual suite area may vary from the stated area. 4. Drawings not to scale. 5. The developer reserves the right to make revisions/alterations without any liability whatsoever.

3 BEDROOM TOWER 2



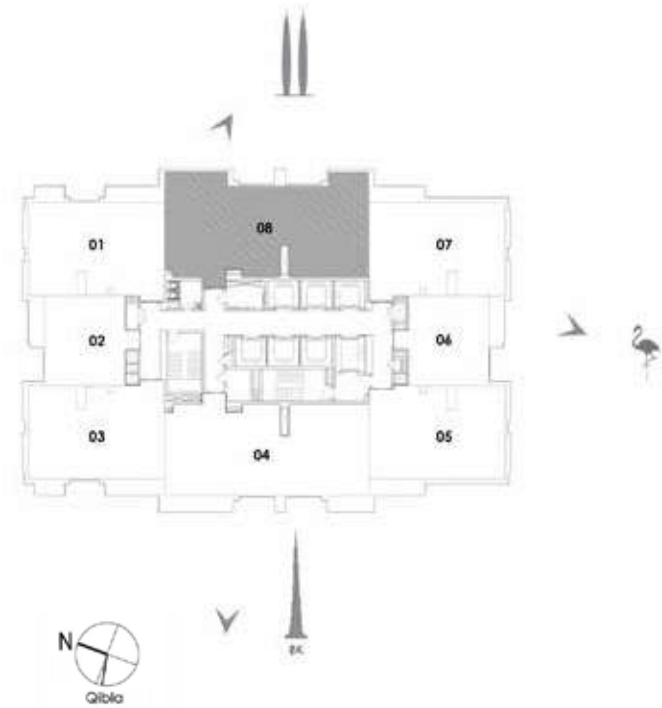
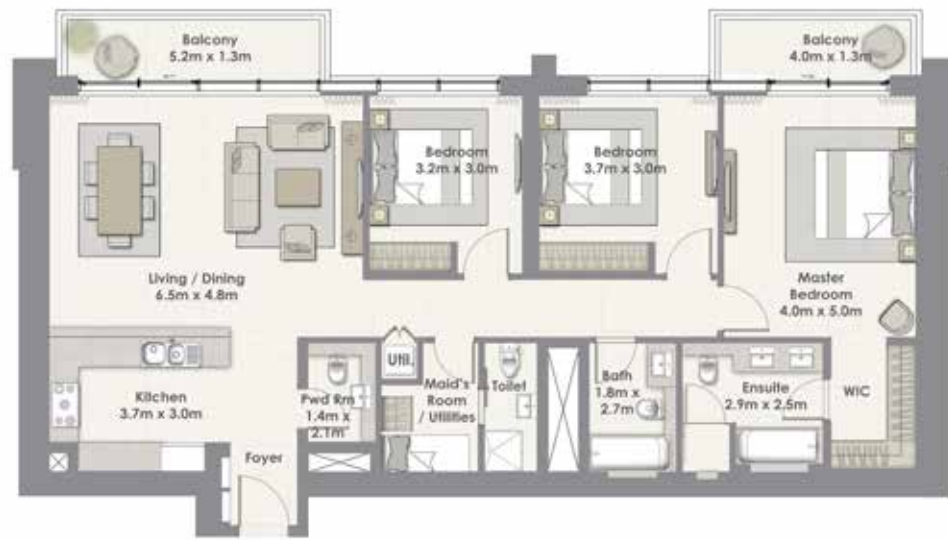
UNIT 04 / LEVEL 25-45

Suite Area	147.96 Sq.m. / 1593 Sq.ft.
Balcony Area	11.58 Sq.m. / 125 Sq.ft.
Total Area	159.54 Sq.m. / 1718 Sq.ft.



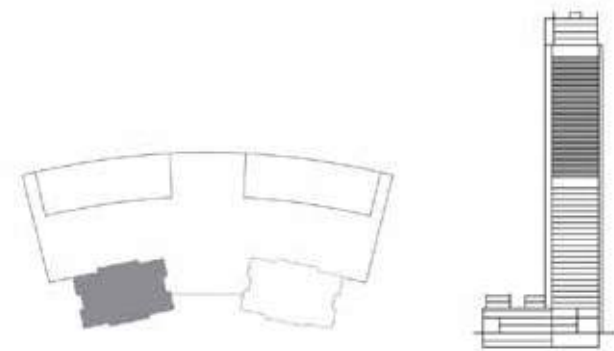
1. All materials, dimensions & drawings are approximate. 2. Information is subject to change without notice. 3. Actual suite area may vary from the stated area. 4. Drawings not to scale. 5. The developer reserves the right to make revisions/alterations without any liability whatsoever.

3 BEDROOM TOWER 2



UNIT 08 / LEVEL 25-45

Suite Area	147.96 Sq.m. / 1593 Sq.ft.
Balcony Area	12.40 Sq.m. / 133 Sq.ft.
Total Area	160.36 Sq.m. / 1726 Sq.ft.



1. All materials, dimensions & drawings are approximate. 2. Information is subject to change without notice. 3. Actual suite area may vary from the stated area. 4. Drawings not to scale. 5. The developer reserves the right to make revisions/alterations without any liability whatsoever.



emaar.com