

DUBAI CREEK

HARBOUR



CREEK HORIZON



FLOOR

PLANS

TOWER ONE

DUBAI CREEK

HARBOUR



TOWER 2

4 BEDROOM W/ TERRACE

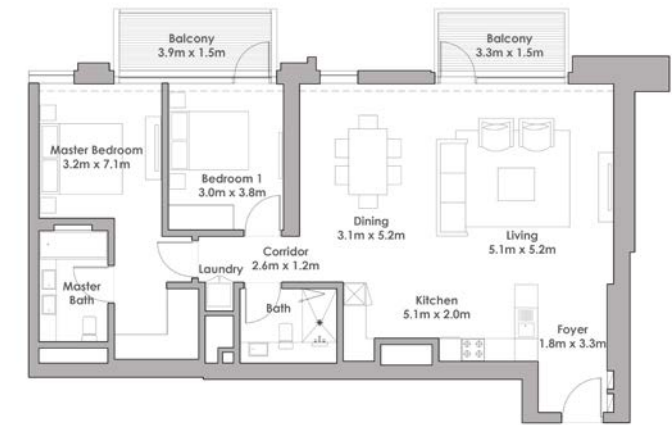
UNIT 01-06 / LEVEL 1-2



Suite Area	2355 Sq.ft. / 218.74 Sq.m.
Balcony Area	655 Sq.ft. / 60.83 Sq.m.
Total Area	3010 Sq.ft. / 297.57 Sq.m.

DUBAI CREEK

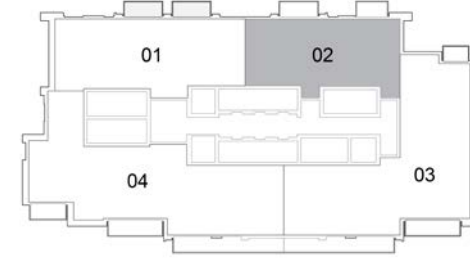
HARBOUR



TOWER 1

2 BEDROOM W/ TERRACE

UNIT 02 / LEVEL 35-36



Suite Area	1237 Sq.ft. / 114.89 Sq.m.
Balcony Area	139 Sq.ft. / 12.91 Sq.m.
Total Area	1367 Sq.ft. / 127.8 Sq.m.



1. All dimensions are in imperial and metric, and measured to structural elements and exclude wall finishes and construction tolerances. 2. All materials, dimensions, and drawings are approximate only. 3. Information is subject to change without notice, at developer's absolute discretion. 4. Actual area may vary from the stated area. 5. Drawings not to scale. 6. All images used are for illustrative purposes only and do not represent the actual size, features, specifications, fittings, and furnishings. 7. The developer reserves the right to make revisions/alterations, at its absolute discretion, without any liability whatsoever.



1. All dimensions are in imperial and metric, and measured to structural elements and exclude wall finishes and construction tolerances. 2. All materials, dimensions, and drawings are approximate only. 3. Information is subject to change without notice, at developer's absolute discretion. 4. Actual area may vary from the stated area. 5. Drawings not to scale. 6. All images used are for illustrative purposes only and do not represent the actual size, features, specifications, fittings, and furnishings. 7. The developer reserves the right to make revisions/alterations, at its absolute discretion, without any liability whatsoever.



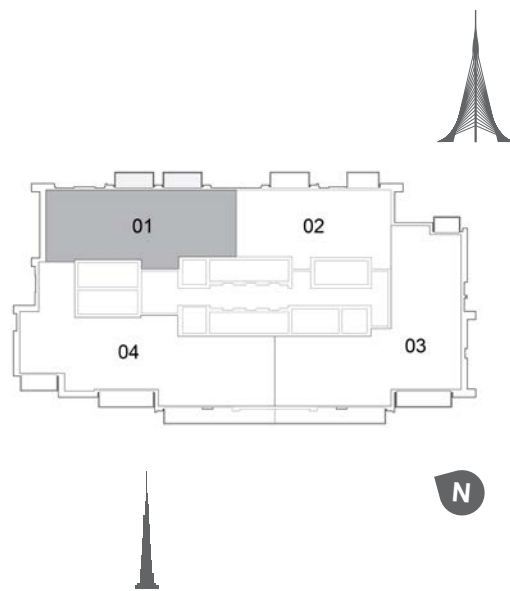
DUBAI CREEK

HARBOUR



TOWER 1
3 BEDROOM W/ TERRACE
UNIT 01 / LEVEL 35-36

Suite Area	2022 Sq.ft. / 187.85 Sq.m.
Balcony Area	152 Sq.ft. / 14.13 Sq.m.
Total Area	2174 Sq.ft. / 201.98 Sq.m.



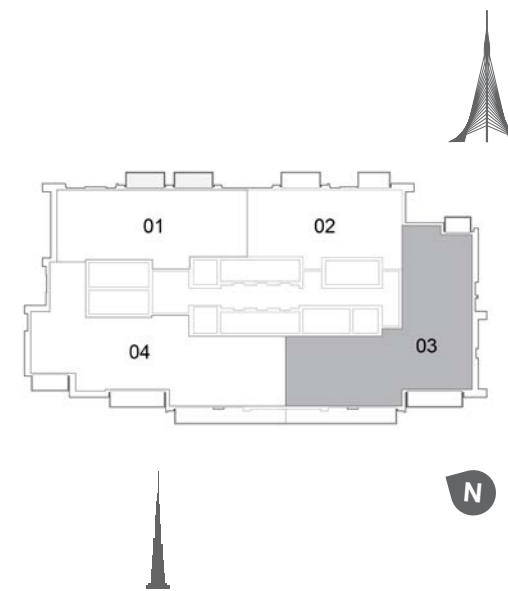
DUBAI CREEK

HARBOUR



TOWER 1
4 BEDROOM W/ TERRACE
UNIT 03 / LEVEL 35-36

Suite Area	2587 Sq.ft. / 240.33 Sq.m.
Balcony Area	383 Sq.ft. / 35.57 Sq.m.
Total Area	2970 Sq.ft. / 275.9 Sq.m.



1. All dimensions are in imperial and metric, and measured to structural elements and exclude wall finishes and construction tolerances. 2. All materials, dimensions, and drawings are approximate only. 3. Information is subject to change without notice, at developer's absolute discretion. 4. Actual area may vary from the stated area. 5. Drawings not to scale. 6. All images used are for illustrative purposes only and do not represent the actual size, features, specifications, fittings, and furnishings. 7. The developer reserves the right to make revisions/alterations, at its absolute discretion, without any liability whatsoever.

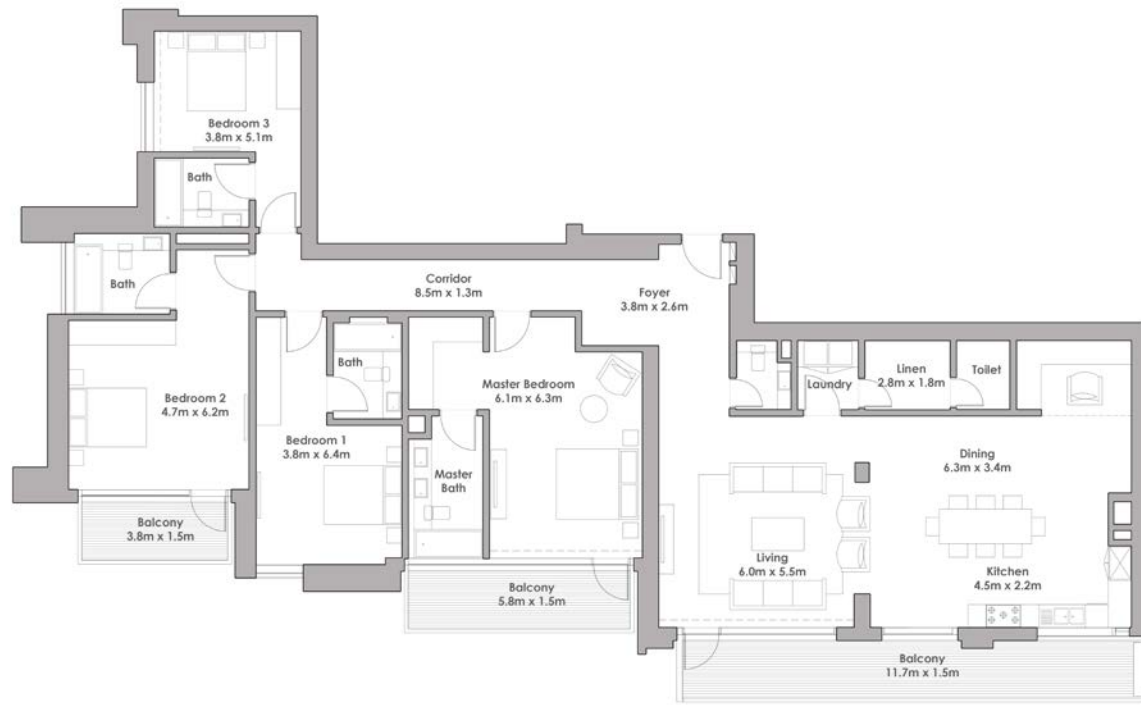


1. All dimensions are in imperial and metric, and measured to structural elements and exclude wall finishes and construction tolerances. 2. All materials, dimensions, and drawings are approximate only. 3. Information is subject to change without notice, at developer's absolute discretion. 4. Actual area may vary from the stated area. 5. Drawings not to scale. 6. All images used are for illustrative purposes only and do not represent the actual size, features, specifications, fittings, and furnishings. 7. The developer reserves the right to make revisions/alterations, at its absolute discretion, without any liability whatsoever.



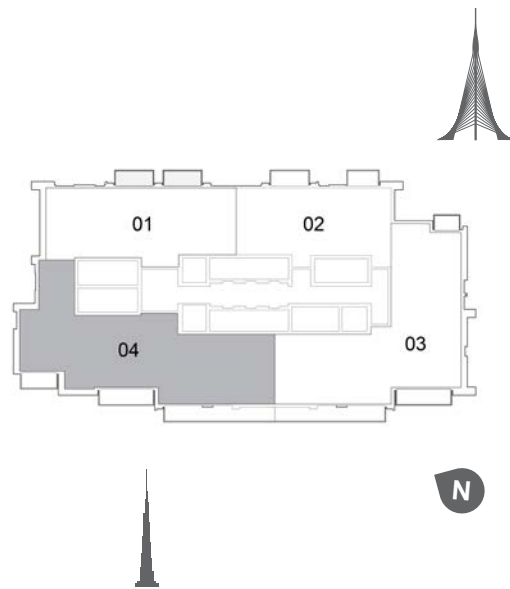
DUBAI CREEK

HARBOUR



TOWER 1
4 BEDROOM W/ TERRACE
UNIT 04/ LEVEL 35-36

Suite Area	2653 Sq.ft. / 246.49 Sq.m.
Balcony Area	401 Sq.ft. / 37.23 Sq.m.
Total Area	3054 Sq.ft. / 283.72 Sq.m.



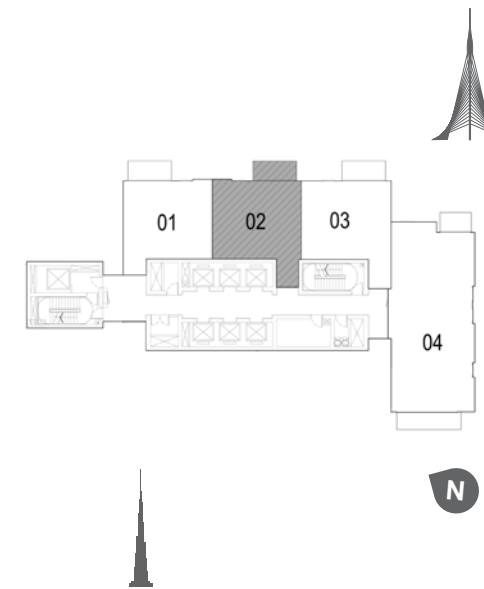
DUBAI CREEK

HARBOUR



TOWER 1
1 BEDROOM W/ TERRACE
UNIT 01/ LEVEL P02

Suite Area	706 Sq.ft. / 65.59 Sq.m.
Balcony Area	76 Sq.ft. / 7.07 Sq.m.
Total Area	782 Sq.ft. / 72.66 Sq.m.



1. All dimensions are in imperial and metric, and measured to structural elements and exclude wall finishes and construction tolerances. 2. All materials, dimensions, and drawings are approximate only. 3. Information is subject to change without notice, at developer's absolute discretion. 4. Actual area may vary from the stated area. 5. Drawings not to scale. 6. All images used are for illustrative purposes only and do not represent the actual size, features, specifications, fittings, and furnishings. 7. The developer reserves the right to make revisions/alterations, at its absolute discretion, without any liability whatsoever.



1. All dimensions are in imperial and metric, and measured to structural elements and exclude wall finishes and construction tolerances. 2. All materials, dimensions, and drawings are approximate only. 3. Information is subject to change without notice, at developer's absolute discretion. 4. Actual area may vary from the stated area. 5. Drawings not to scale. 6. All images used are for illustrative purposes only and do not represent the actual size, features, specifications, fittings, and furnishings. 7. The developer reserves the right to make revisions/alterations, at its absolute discretion, without any liability whatsoever.



DUBAI CREEK

HARBOUR



TOWER 1
1 BEDROOM W/ TERRACE
UNIT 02/ LEVEL P02

Suite Area	707 Sq.ft. / 65.66 Sq.m.
Balcony Area	76 Sq.ft. / 7.07 Sq.m.
Total Area	783 Sq.ft. / 72.23 Sq.m.

DUBAI CREEK

HARBOUR



TOWER 1
1 BEDROOM W/ TERRACE
UNIT 03/ LEVEL P02

Suite Area	659 Sq.ft. / 64.59 Sq.m.
Balcony Area	63 Sq.ft. / 5.84 Sq.m.
Total Area	758 Sq.ft. / 70.38 Sq.m.



1. All dimensions are in imperial and metric, and measured to structural elements and exclude wall finishes and construction tolerances. 2. All materials, dimensions, and drawings are approximate only. 3. Information is subject to change without notice, at developer's absolute discretion. 4. Actual area may vary from the stated area. 5. Drawings not to scale. 6. All images used are for illustrative purposes only and do not represent the actual size, features, specifications, fittings, and furnishings. 7. The developer reserves the right to make revisions/alterations, at its absolute discretion, without any liability whatsoever.



1. All dimensions are in imperial and metric, and measured to structural elements and exclude wall finishes and construction tolerances. 2. All materials, dimensions, and drawings are approximate only. 3. Information is subject to change without notice, at developer's absolute discretion. 4. Actual area may vary from the stated area. 5. Drawings not to scale. 6. All images used are for illustrative purposes only and do not represent the actual size, features, specifications, fittings, and furnishings. 7. The developer reserves the right to make revisions/alterations, at its absolute discretion, without any liability whatsoever.

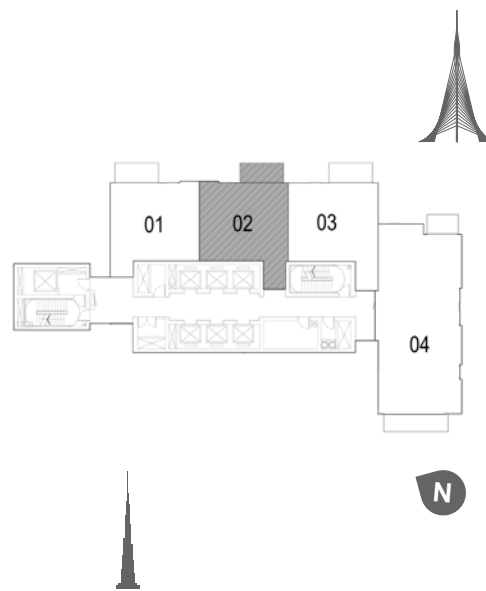
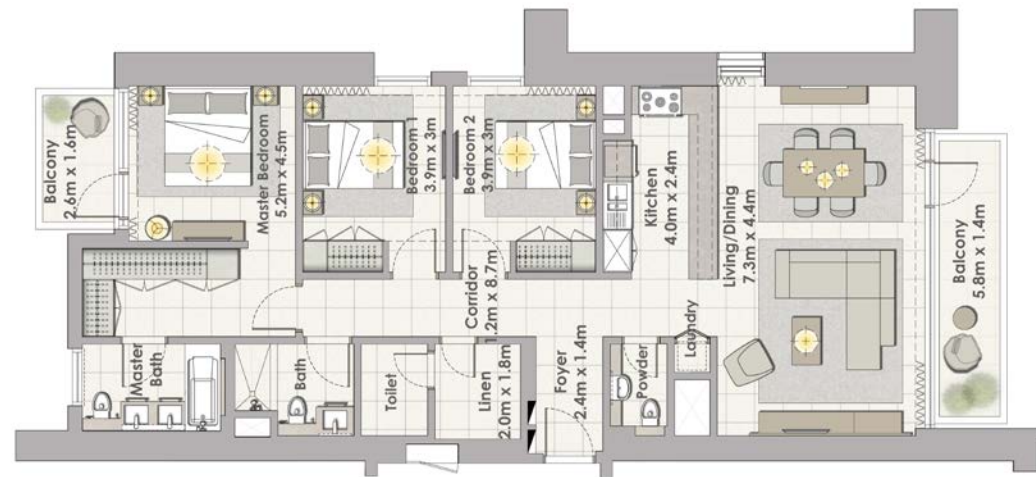


DUBAI CREEK

HARBOUR

DUBAI CREEK

HARBOUR

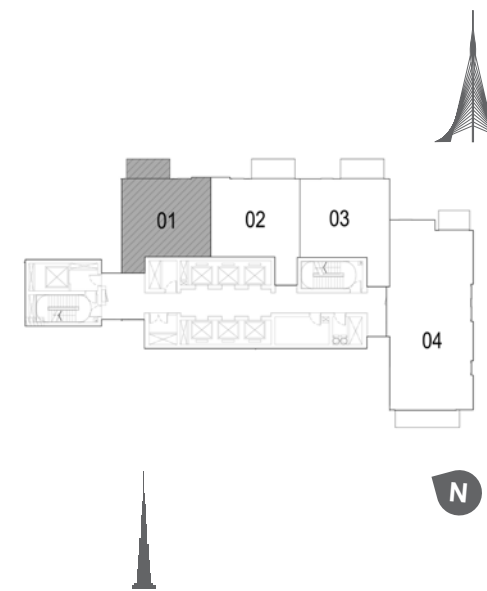


TOWER 1

3 BEDROOM W/ TERRACE

UNIT 04/ LEVEL P02

Suite Area	1463 Sq.ft. / 135.94 Sq.m.
Balcony Area	162 Sq.ft. / 15.09 Sq.m.
Total Area	1626 Sq.ft. / 151.03 Sq.m.



TOWER 1

1 BEDROOM W/ TERRACE

UNIT 01/ LEVEL P03

Suite Area	706 Sq.ft. / 65.59 Sq.m.
Balcony Area	76 Sq.ft. / 7.07 Sq.m.
Total Area	782 Sq.ft. / 72.66 Sq.m.



1. All dimensions are in imperial and metric, and measured to structural elements and exclude wall finishes and construction tolerances. 2. All materials, dimensions, and drawings are approximate only. 3. Information is subject to change without notice, at developer's absolute discretion. 4. Actual area may vary from the stated area. 5. Drawings not to scale. 6. All images used are for illustrative purposes only and do not represent the actual size, features, specifications, fittings, and furnishings. 7. The developer reserves the right to make revisions/alterations, at its absolute discretion, without any liability whatsoever.



1. All dimensions are in imperial and metric, and measured to structural elements and exclude wall finishes and construction tolerances. 2. All materials, dimensions, and drawings are approximate only. 3. Information is subject to change without notice, at developer's absolute discretion. 4. Actual area may vary from the stated area. 5. Drawings not to scale. 6. All images used are for illustrative purposes only and do not represent the actual size, features, specifications, fittings, and furnishings. 7. The developer reserves the right to make revisions/alterations, at its absolute discretion, without any liability whatsoever.



DUBAI CREEK

HARBOUR

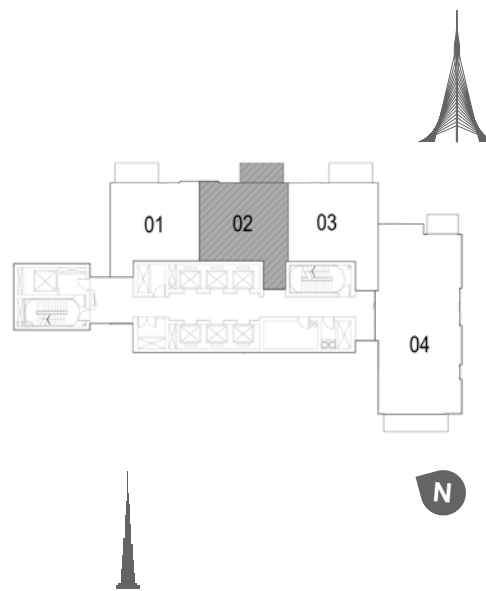


TOWER 1

1 BEDROOM W/ TERRACE

UNIT 02/ LEVEL P03

Suite Area	707 Sq.ft. / 65.66 Sq.m.
Balcony Area	76 Sq.ft. / 7.07 Sq.m.
Total Area	783 Sq.ft. / 72.73 Sq.m.



DUBAI CREEK

HARBOUR

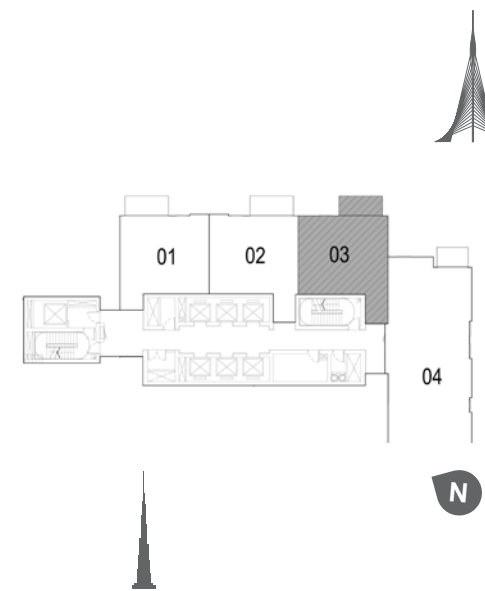


TOWER 1

1 BEDROOM W/ TERRACE

UNIT 03/ LEVEL P03

Suite Area	695 Sq.ft. / 64.54 Sq.m.
Balcony Area	63 Sq.ft. / 5.84 Sq.m.
Total Area	758 Sq.ft. / 70.38 Sq.m.



1. All dimensions are in imperial and metric, and measured to structural elements and exclude wall finishes and construction tolerances. 2. All materials, dimensions, and drawings are approximate only. 3. Information is subject to change without notice, at developer's absolute discretion. 4. Actual area may vary from the stated area. 5. Drawings not to scale. 6. All images used are for illustrative purposes only and do not represent the actual size, features, specifications, fittings, and furnishings. 7. The developer reserves the right to make revisions/alterations, at its absolute discretion, without any liability whatsoever.



1. All dimensions are in imperial and metric, and measured to structural elements and exclude wall finishes and construction tolerances. 2. All materials, dimensions, and drawings are approximate only. 3. Information is subject to change without notice, at developer's absolute discretion. 4. Actual area may vary from the stated area. 5. Drawings not to scale. 6. All images used are for illustrative purposes only and do not represent the actual size, features, specifications, fittings, and furnishings. 7. The developer reserves the right to make revisions/alterations, at its absolute discretion, without any liability whatsoever.

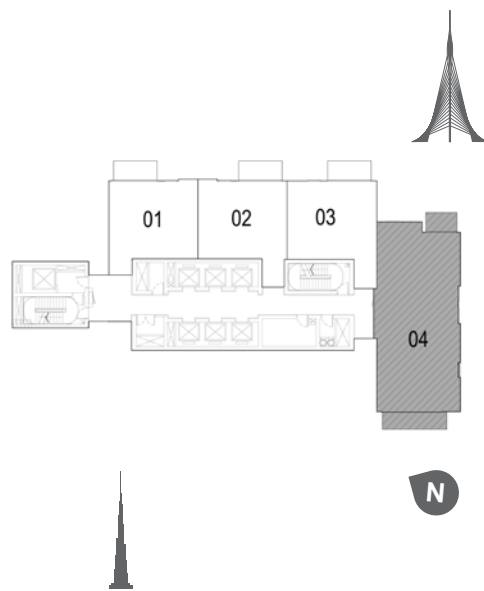
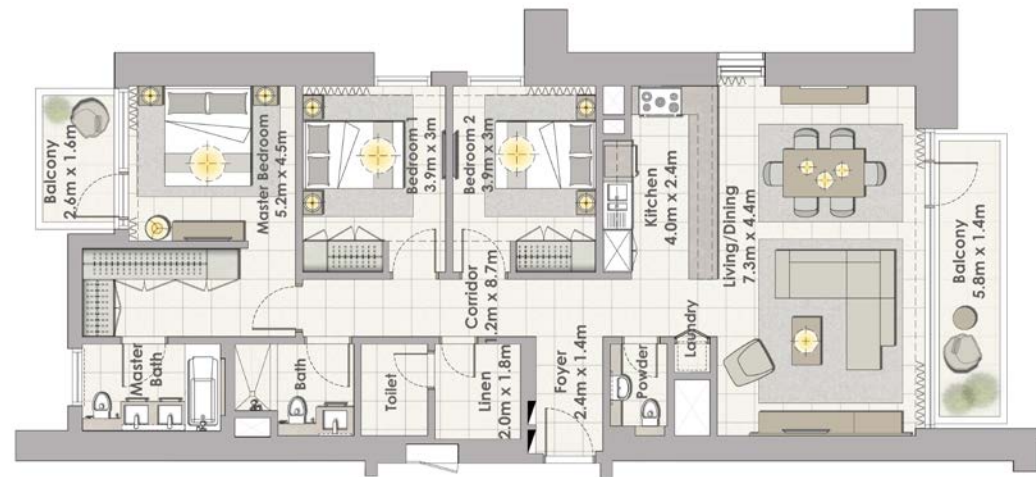


DUBAI CREEK

HARBOUR

DUBAI CREEK

HARBOUR

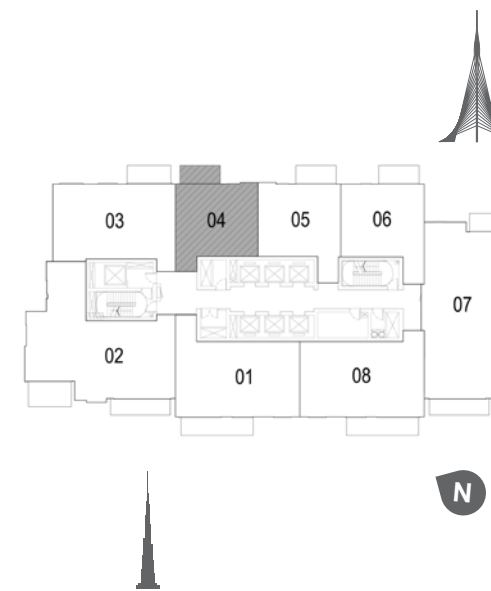


TOWER 1

3 BEDROOM W/ TERRACE

UNIT 04/ LEVEL P03

Suite Area	1463 Sq.ft. / 135.94 Sq.m.
Balcony Area	162 Sq.ft. / 15.09 Sq.m.
Total Area	1626 Sq.ft. / 151.03 Sq.m.



TOWER 1

1 BEDROOM W/ TERRACE

UNIT 04/ LEVEL 2-17

Suite Area	706 Sq.ft. / 65.59 Sq.m.
Balcony Area	76 Sq.ft. / 7.07 Sq.m.
Total Area	782 Sq.ft. / 72.66 Sq.m.



1. All dimensions are in imperial and metric, and measured to structural elements and exclude wall finishes and construction tolerances. 2. All materials, dimensions, and drawings are approximate only. 3. Information is subject to change without notice, at developer's absolute discretion. 4. Actual area may vary from the stated area. 5. Drawings not to scale. 6. All images used are for illustrative purposes only and do not represent the actual size, features, specifications, fittings, and furnishings. 7. The developer reserves the right to make revisions/alterations, at its absolute discretion, without any liability whatsoever.

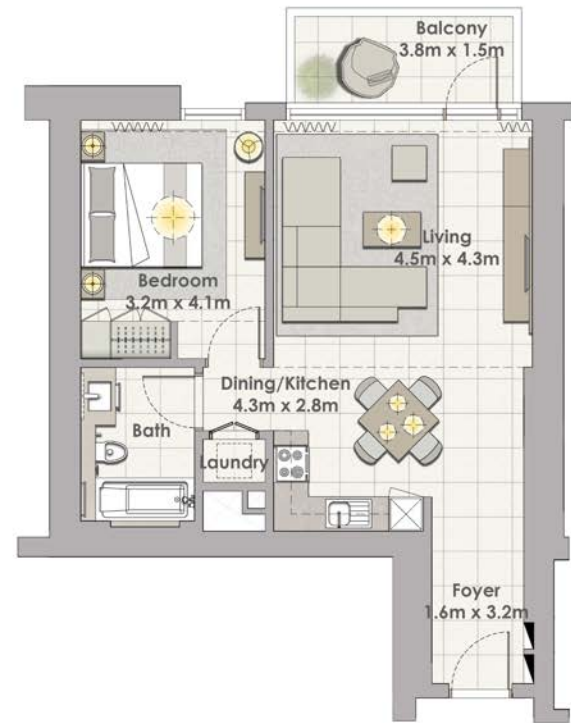


1. All dimensions are in imperial and metric, and measured to structural elements and exclude wall finishes and construction tolerances. 2. All materials, dimensions, and drawings are approximate only. 3. Information is subject to change without notice, at developer's absolute discretion. 4. Actual area may vary from the stated area. 5. Drawings not to scale. 6. All images used are for illustrative purposes only and do not represent the actual size, features, specifications, fittings, and furnishings. 7. The developer reserves the right to make revisions/alterations, at its absolute discretion, without any liability whatsoever.



DUBAI CREEK

HARBOUR



TOWER 1
1 BEDROOM W/ TERRACE
UNIT 05/ LEVEL 2-17



Suite Area	707 Sq.ft. / 65.66 Sq.m.
Balcony Area	76 Sq.ft. / 7.07 Sq.m.
Total Area	783 Sq.ft. / 72.73 Sq.m.

DUBAI CREEK

HARBOUR



TOWER 1
1 BEDROOM W/ TERRACE
UNIT 06/ LEVEL 2-17



Suite Area	695 Sq.ft. / 64.54 Sq.m.
Balcony Area	63 Sq.ft. / 5.84 Sq.m.
Total Area	758 Sq.ft. / 70.38 Sq.m.



1. All dimensions are in imperial and metric, and measured to structural elements and exclude wall finishes and construction tolerances. 2. All materials, dimensions, and drawings are approximate only. 3. Information is subject to change without notice, at developer's absolute discretion. 4. Actual area may vary from the stated area. 5. Drawings not to scale. 6. All images used are for illustrative purposes only and do not represent the actual size, features, specifications, fittings, and furnishings. 7. The developer reserves the right to make revisions/alterations, at its absolute discretion, without any liability whatsoever.



1. All dimensions are in imperial and metric, and measured to structural elements and exclude wall finishes and construction tolerances. 2. All materials, dimensions, and drawings are approximate only. 3. Information is subject to change without notice, at developer's absolute discretion. 4. Actual area may vary from the stated area. 5. Drawings not to scale. 6. All images used are for illustrative purposes only and do not represent the actual size, features, specifications, fittings, and furnishings. 7. The developer reserves the right to make revisions/alterations, at its absolute discretion, without any liability whatsoever.

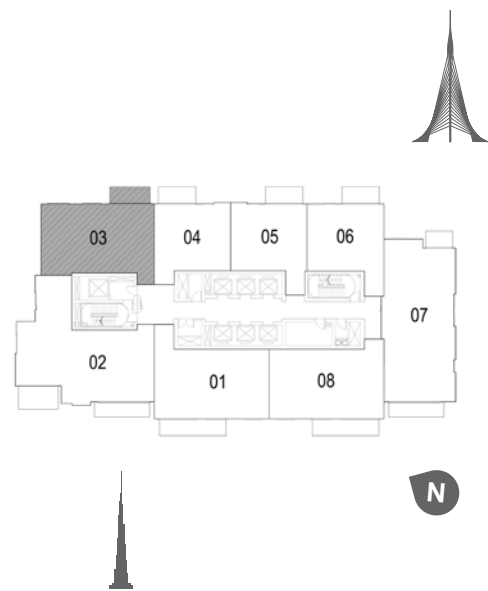
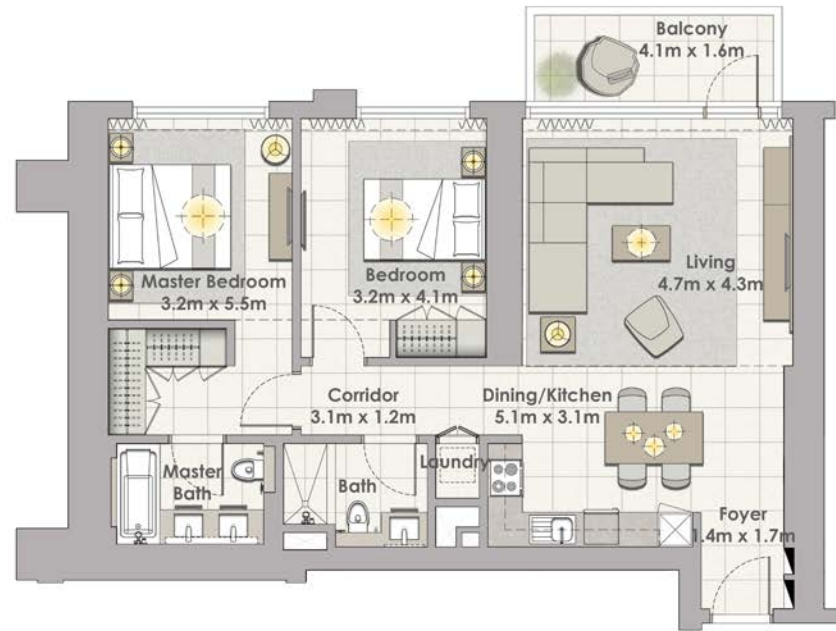


DUBAI CREEK

HARBOUR

DUBAI CREEK

HARBOUR

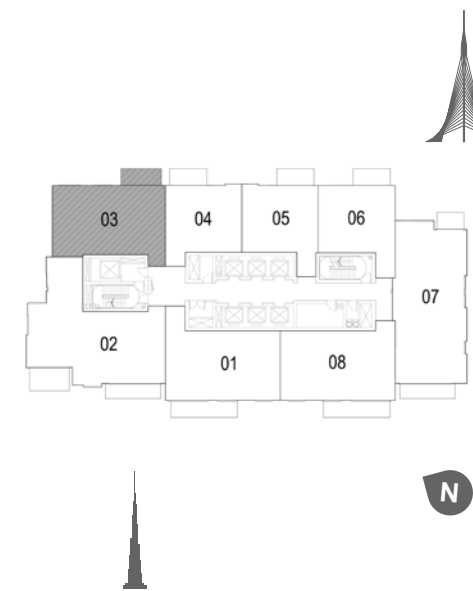


TOWER 1

2 BEDROOM W/ TERRACE

UNIT 03/ LEVEL 2-17

Suite Area	1063 Sq.ft. / 98.76 Sq.m.
Balcony Area	76 Sq.ft. / 7.07 Sq.m.
Total Area	1139 Sq.ft. / 105.83 Sq.m.



TOWER 1

2 BEDROOM W/ TERRACE

UNIT 03/ LEVEL 2-17

Suite Area	1063 Sq.ft. / 98.76 Sq.m.
Balcony Area	76 Sq.ft. / 7.07 Sq.m.
Total Area	1139 Sq.ft. / 105.83 Sq.m.



1. All dimensions are in imperial and metric, and measured to structural elements and exclude wall finishes and construction tolerances. 2. All materials, dimensions, and drawings are approximate only. 3. Information is subject to change without notice, at developer's absolute discretion. 4. Actual area may vary from the stated area. 5. Drawings not to scale. 6. All images used are for illustrative purposes only and do not represent the actual size, features, specifications, fittings, and furnishings. 7. The developer reserves the right to make revisions/alterations, at its absolute discretion, without any liability whatsoever.



1. All dimensions are in imperial and metric, and measured to structural elements and exclude wall finishes and construction tolerances. 2. All materials, dimensions, and drawings are approximate only. 3. Information is subject to change without notice, at developer's absolute discretion. 4. Actual area may vary from the stated area. 5. Drawings not to scale. 6. All images used are for illustrative purposes only and do not represent the actual size, features, specifications, fittings, and furnishings. 7. The developer reserves the right to make revisions/alterations, at its absolute discretion, without any liability whatsoever.

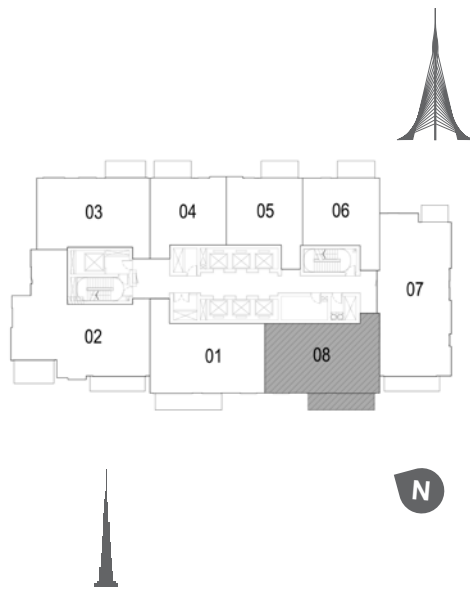
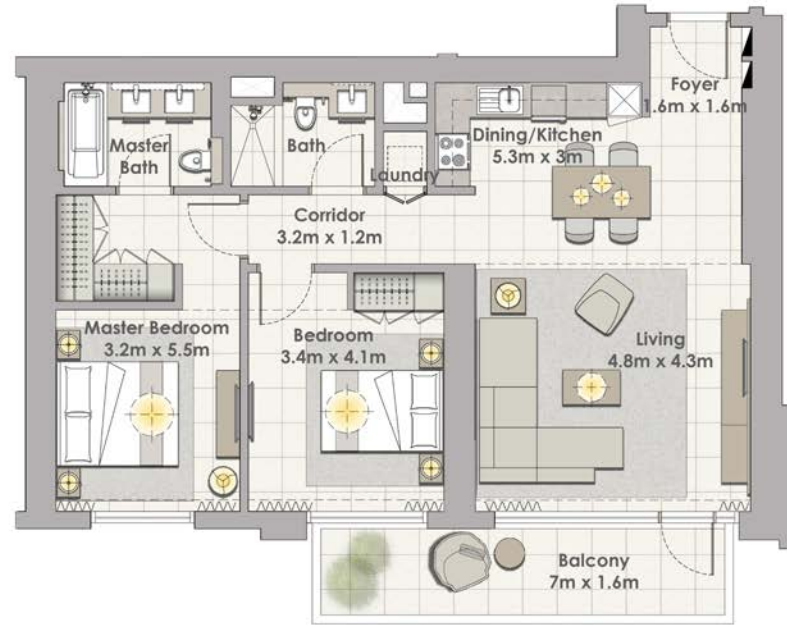


2 BEDROOM W/ TERRACE
UNIT 08 / LEVEL 2-17

DUBAI CREEK

HARBOUR

Suite Area 1075 Sq.ft. / 99.89 Sq.m.
Terrace Area 133 Sq.ft. / 12.31 Sq.m.
Total Area 1208 Sq.ft. / 112.20 Sq.m.



TOWER 1

2 BEDROOM W/ TERRACE

UNIT 08/ LEVEL 2-17

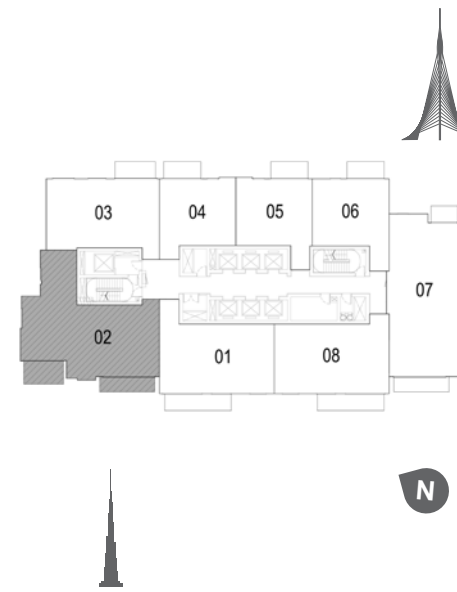
Suite Area	1075 Sq.ft. / 99.89 Sq.m.
Balcony Area	133 Sq.ft. / 12.32 Sq.m.
Total Area	1208 Sq.ft. / 112.20 Sq.m.

DUBAI CREEK

HARBOUR

3 BEDROOM W/ TERRACE
UNIT 02 / LEVEL 2-17

Suite Area 1515 Sq.ft. / 140.72 Sq.m.
Terrace Area 180 Sq.ft. / 16.75 Sq.m.
Total Area 1695 Sq.ft. / 157.47 Sq.m.



TOWER 1

3 BEDROOM W/ TERRACE

UNIT 02/ LEVEL 2-17

Suite Area	1515 Sq.ft. / 140.72 Sq.m.
Balcony Area	180 Sq.ft. / 16.75 Sq.m.
Total Area	1695 Sq.ft. / 157.47 Sq.m.



1. All dimensions are in imperial and metric, and measured to structural elements and exclude wall finishes and construction tolerances. 2. All materials, dimensions, and drawings are approximate only. 3. Information is subject to change without notice, at developer's absolute discretion. 4. Actual area may vary from the stated area. 5. Drawings not to scale. 6. All images used are for illustrative purposes only and do not represent the actual size, features, specifications, fittings, and furnishings. 7. The developer reserves the right to make revisions/alterations, at its absolute discretion, without any liability whatsoever.



1. All dimensions are in imperial and metric, and measured to structural elements and exclude wall finishes and construction tolerances. 2. All materials, dimensions, and drawings are approximate only. 3. Information is subject to change without notice, at developer's absolute discretion. 4. Actual area may vary from the stated area. 5. Drawings not to scale. 6. All images used are for illustrative purposes only and do not represent the actual size, features, specifications, fittings, and furnishings. 7. The developer reserves the right to make revisions/alterations, at its absolute discretion, without any liability whatsoever.

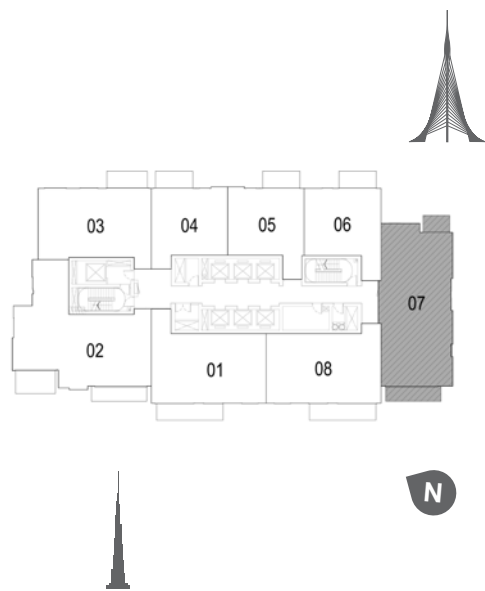
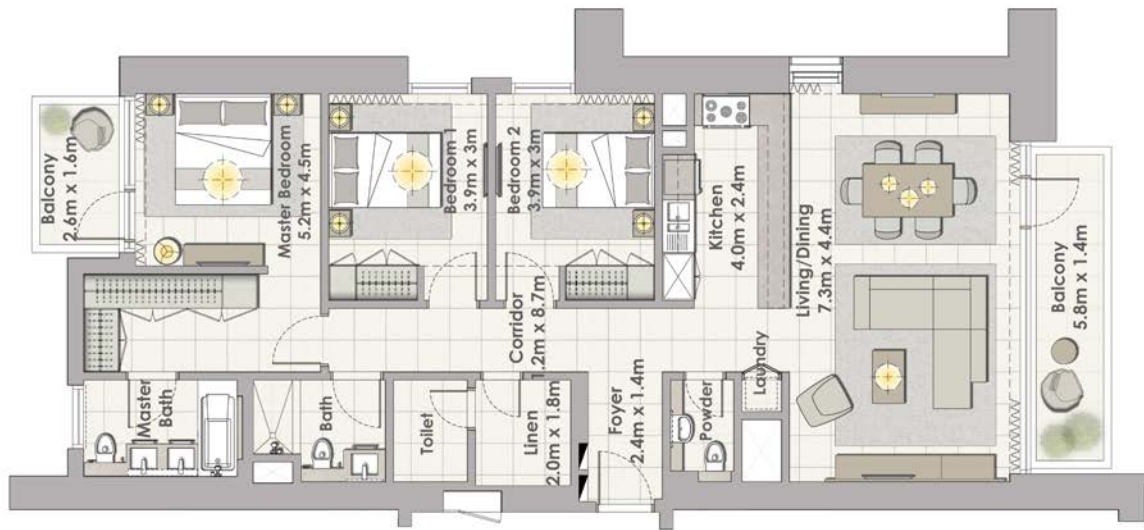


DUBAI CREEK

HARBOUR

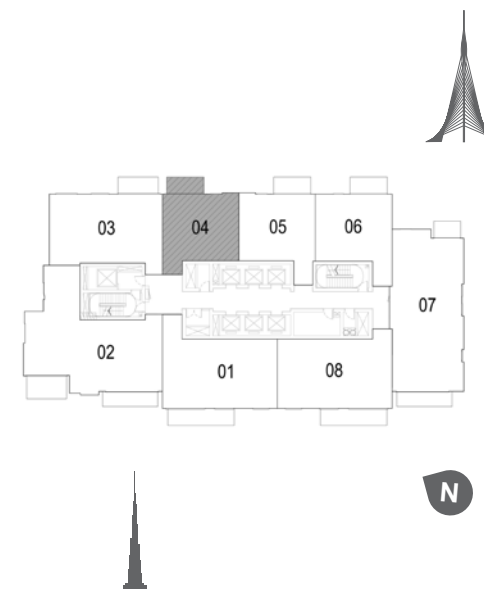
DUBAI CREEK

HARBOUR



TOWER 1
3 BEDROOM W/ TERRACE
UNIT 07/ LEVEL 2-17

Suite Area	1465 Sq.ft. / 136.13 Sq.m.
Balcony Area	162 Sq.ft. / 15.09 Sq.m.
Total Area	1627 Sq.ft. / 151.22 Sq.m.



TOWER 1
1 BEDROOM W/ TERRACE
UNIT 04/ LEVEL 19-34

Suite Area	707 Sq.ft. / 65.68 Sq.m.
Balcony Area	76 Sq.ft. / 7.07 Sq.m.
Total Area	783 Sq.ft. / 72.75 Sq.m.



1. All dimensions are in imperial and metric, and measured to structural elements and exclude wall finishes and construction tolerances. 2. All materials, dimensions, and drawings are approximate only. 3. Information is subject to change without notice, at developer's absolute discretion. 4. Actual area may vary from the stated area. 5. Drawings not to scale. 6. All images used are for illustrative purposes only and do not represent the actual size, features, specifications, fittings, and furnishings. 7. The developer reserves the right to make revisions/alterations, at its absolute discretion, without any liability whatsoever.



1. All dimensions are in imperial and metric, and measured to structural elements and exclude wall finishes and construction tolerances. 2. All materials, dimensions, and drawings are approximate only. 3. Information is subject to change without notice, at developer's absolute discretion. 4. Actual area may vary from the stated area. 5. Drawings not to scale. 6. All images used are for illustrative purposes only and do not represent the actual size, features, specifications, fittings, and furnishings. 7. The developer reserves the right to make revisions/alterations, at its absolute discretion, without any liability whatsoever.

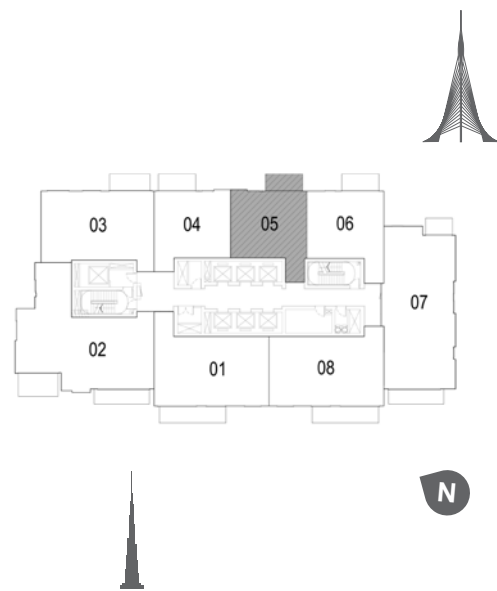


DUBAI CREEK

HARBOUR



TOWER 1
1 BEDROOM W/ TERRACE
UNIT 05/ LEVEL 19-34



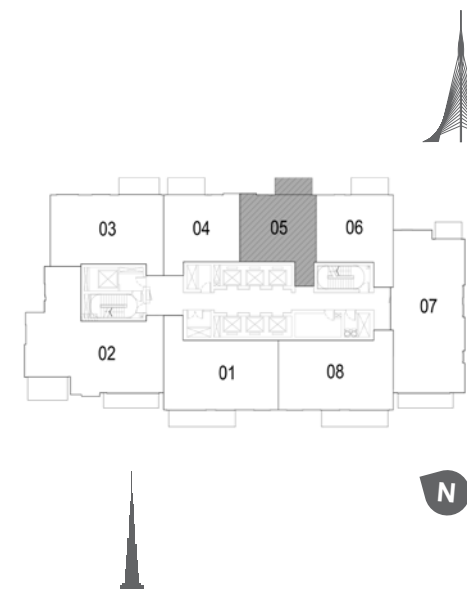
Suite Area	707 Sq.ft. / 65.67 Sq.m.
Balcony Area	76 Sq.ft. / 7.07 Sq.m.
Total Area	783 Sq.ft. / 72.74 Sq.m.

DUBAI CREEK

HARBOUR



TOWER 1
1 BEDROOM W/ TERRACE
UNIT 05/ LEVEL 19-34



Suite Area	707 Sq.ft. / 65.67 Sq.m.
Balcony Area	76 Sq.ft. / 7.07 Sq.m.
Total Area	783 Sq.ft. / 72.74 Sq.m.



1. All dimensions are in imperial and metric, and measured to structural elements and exclude wall finishes and construction tolerances. 2. All materials, dimensions, and drawings are approximate only. 3. Information is subject to change without notice, at developer's absolute discretion. 4. Actual area may vary from the stated area. 5. Drawings not to scale. 6. All images used are for illustrative purposes only and do not represent the actual size, features, specifications, fittings, and furnishings. 7. The developer reserves the right to make revisions/alterations, at its absolute discretion, without any liability whatsoever.

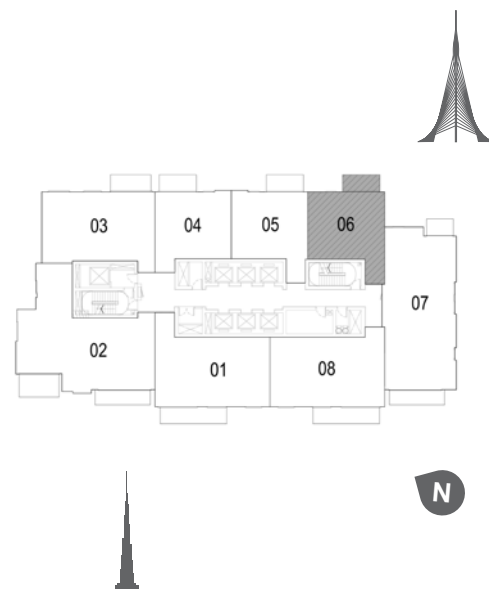


1. All dimensions are in imperial and metric, and measured to structural elements and exclude wall finishes and construction tolerances. 2. All materials, dimensions, and drawings are approximate only. 3. Information is subject to change without notice, at developer's absolute discretion. 4. Actual area may vary from the stated area. 5. Drawings not to scale. 6. All images used are for illustrative purposes only and do not represent the actual size, features, specifications, fittings, and furnishings. 7. The developer reserves the right to make revisions/alterations, at its absolute discretion, without any liability whatsoever.



DUBAI CREEK

HARBOUR



TOWER 1

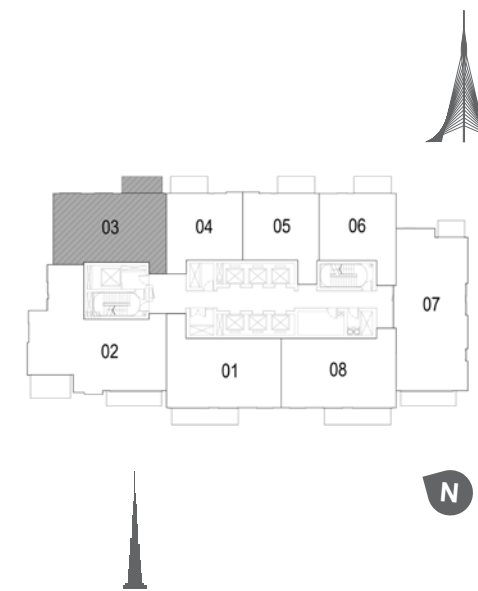
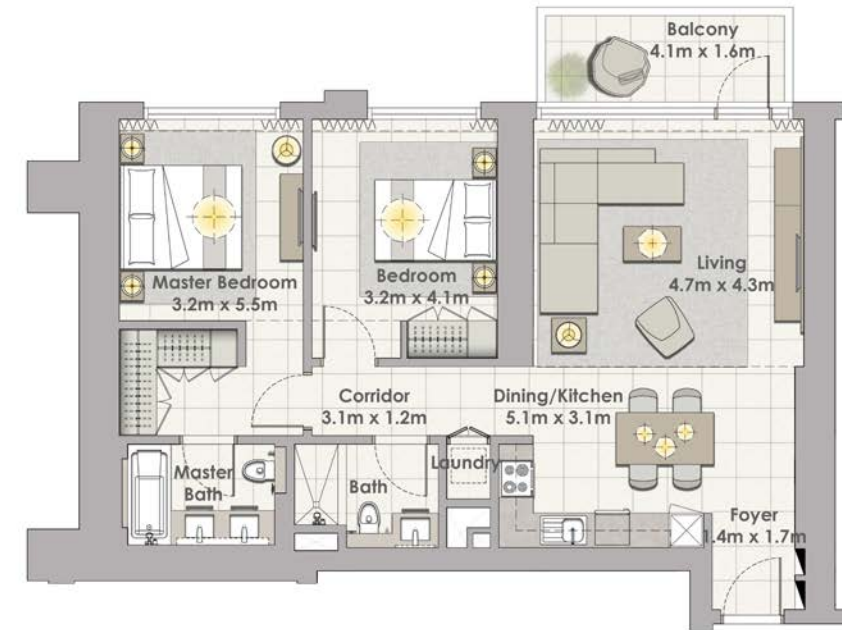
1 BEDROOM W/ TERRACE

UNIT 06/ LEVEL 19-34

Suite Area	708 Sq.ft. / 65.77 Sq.m.
Balcony Area	63 Sq.ft. / 5.84 Sq.m.
Total Area	771 Sq.ft. / 71.61 Sq.m.

DUBAI CREEK

HARBOUR



TOWER 1

2 BEDROOM W/ TERRACE

UNIT 03/ LEVEL 19-34

Suite Area	1060 Sq.ft. / 98.49 Sq.m.
Balcony Area	76 Sq.ft. / 7.07 Sq.m.
Total Area	1136 Sq.ft. / 105.56 Sq.m.



1. All dimensions are in imperial and metric, and measured to structural elements and exclude wall finishes and construction tolerances. 2. All materials, dimensions, and drawings are approximate only. 3. Information is subject to change without notice, at developer's absolute discretion. 4. Actual area may vary from the stated area. 5. Drawings not to scale. 6. All images used are for illustrative purposes only and do not represent the actual size, features, specifications, fittings, and furnishings. 7. The developer reserves the right to make revisions/alterations, at its absolute discretion, without any liability whatsoever.



1. All dimensions are in imperial and metric, and measured to structural elements and exclude wall finishes and construction tolerances. 2. All materials, dimensions, and drawings are approximate only. 3. Information is subject to change without notice, at developer's absolute discretion. 4. Actual area may vary from the stated area. 5. Drawings not to scale. 6. All images used are for illustrative purposes only and do not represent the actual size, features, specifications, fittings, and furnishings. 7. The developer reserves the right to make revisions/alterations, at its absolute discretion, without any liability whatsoever.



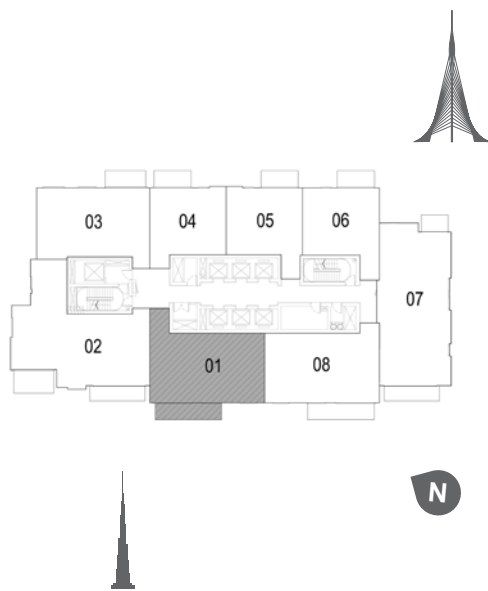
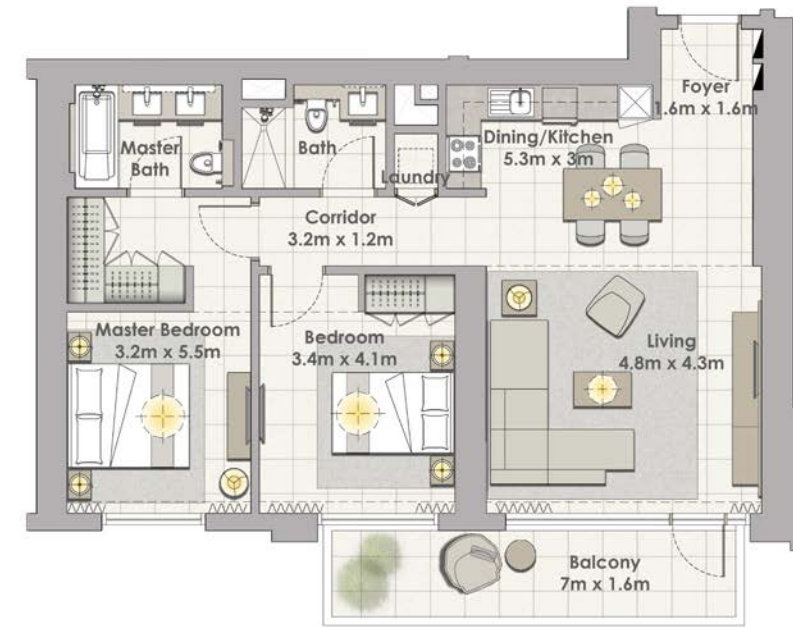
DUBAI CREEK

HARBOUR



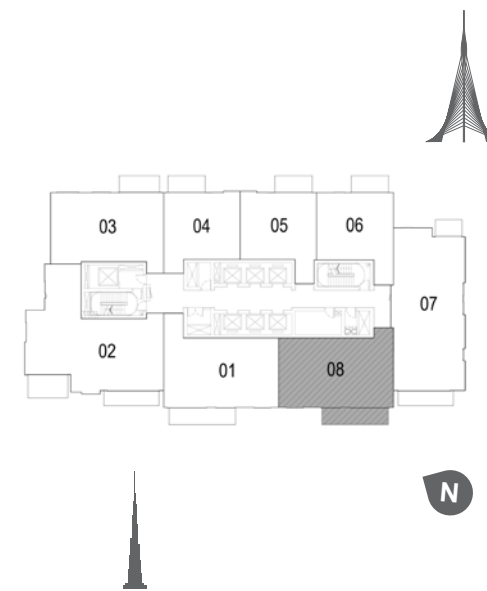
DUBAI CREEK

HARBOUR



TOWER 1
2 BEDROOM W/ TERRACE
UNIT 01/ LEVEL 19-34

Suite Area	1120 Sq.ft. / 104.05 Sq.m.
Balcony Area	133 Sq.ft. / 12.31 Sq.m.
Total Area	1253 Sq.ft. / 116.36 Sq.m.



TOWER 1
2 BEDROOM W/ TERRACE
UNIT 08 LEVEL 19-34

Suite Area	1062 Sq.ft. / 100.54 Sq.m.
Balcony Area	133 Sq.ft. / 12.31 Sq.m.
Total Area	1215 Sq.ft. / 112.85 Sq.m.



1. All dimensions are in imperial and metric, and measured to structural elements and exclude wall finishes and construction tolerances. 2. All materials, dimensions, and drawings are approximate only. 3. Information is subject to change without notice, at developer's absolute discretion. 4. Actual area may vary from the stated area. 5. Drawings not to scale. 6. All images used are for illustrative purposes only and do not represent the actual size, features, specifications, fittings, and furnishings. 7. The developer reserves the right to make revisions/alterations, at its absolute discretion, without any liability whatsoever.



1. All dimensions are in imperial and metric, and measured to structural elements and exclude wall finishes and construction tolerances. 2. All materials, dimensions, and drawings are approximate only. 3. Information is subject to change without notice, at developer's absolute discretion. 4. Actual area may vary from the stated area. 5. Drawings not to scale. 6. All images used are for illustrative purposes only and do not represent the actual size, features, specifications, fittings, and furnishings. 7. The developer reserves the right to make revisions/alterations, at its absolute discretion, without any liability whatsoever.



DUBAI CREEK

HARBOUR



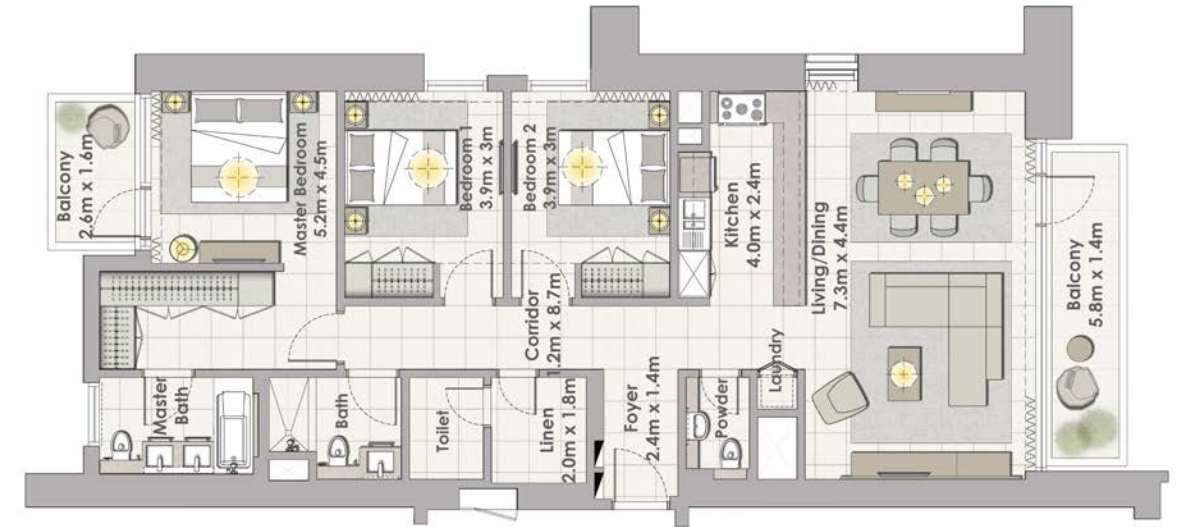
TOWER 1
3 BEDROOM W/ TERRACE
UNIT 02/ LEVEL 19-34



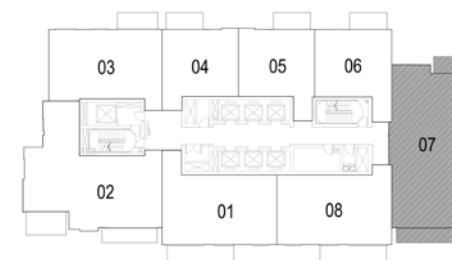
Suite Area	1542 Sq.ft. / 141.54 Sq.m.
Balcony Area	180 Sq.ft. / 16.75 Sq.m.
Total Area	1704 Sq.ft. / 158.29 Sq.m.

DUBAI CREEK

HARBOUR



TOWER 1
3 BEDROOM W/ TERRACE
UNIT 07 LEVEL 19-34



Suite Area	1471 Sq.ft. / 136.65 Sq.m.
Balcony Area	162 Sq.ft. / 15.09 Sq.m.
Total Area	1633 Sq.ft. / 151.74 Sq.m.



1. All dimensions are in imperial and metric, and measured to structural elements and exclude wall finishes and construction tolerances. 2. All materials, dimensions, and drawings are approximate only. 3. Information is subject to change without notice, at developer's absolute discretion. 4. Actual area may vary from the stated area. 5. Drawings not to scale. 6. All images used are for illustrative purposes only and do not represent the actual size, features, specifications, fittings, and furnishings. 7. The developer reserves the right to make revisions/alterations, at its absolute discretion, without any liability whatsoever.



1. All dimensions are in imperial and metric, and measured to structural elements and exclude wall finishes and construction tolerances. 2. All materials, dimensions, and drawings are approximate only. 3. Information is subject to change without notice, at developer's absolute discretion. 4. Actual area may vary from the stated area. 5. Drawings not to scale. 6. All images used are for illustrative purposes only and do not represent the actual size, features, specifications, fittings, and furnishings. 7. The developer reserves the right to make revisions/alterations, at its absolute discretion, without any liability whatsoever.



FLOOR

PLANS
TOWER TWO

DUBAI CREEK

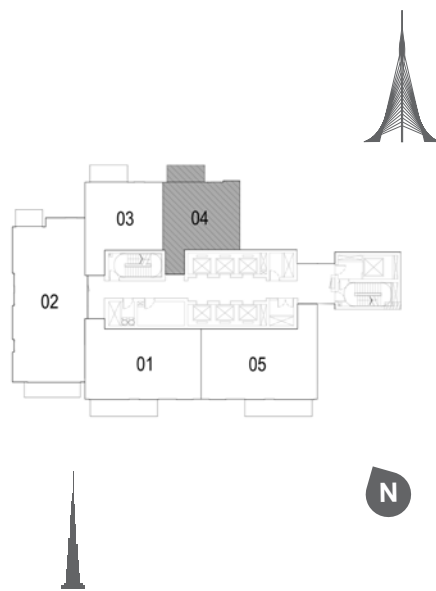
HARBOUR



1 BEDROOM W/ TERRACE UNIT 04 / LEVEL 1

Suite Area	707 Sq.ft. / 65.65 Sq.m.
Terrace Area	76 Sq.ft. / 7.07 Sq.m.
Total Area	783 Sq.ft. / 72.72 Sq.m.

Suite Area	707 Sq.ft. / 65.65 Sq.m.
Balcony Area	76 Sq.ft. / 7.07 Sq.m.
Total Area	783 Sq.ft. / 72.72 Sq.m.



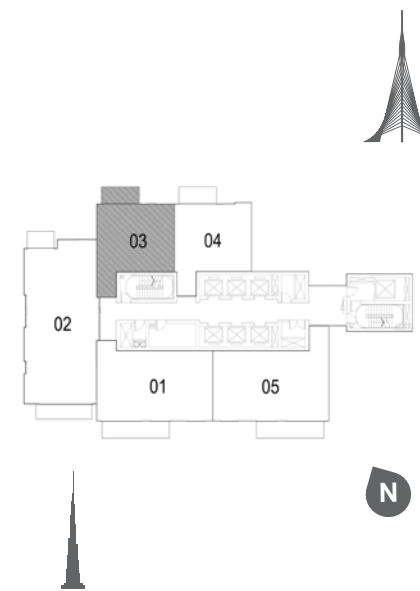
DUBAI CREEK

HARBOUR



TOWER 2 1 BEDROOM W/ TERRACE UNIT 03 / LEVEL 1

Suite Area	695 Sq.ft. / 64.54 Sq.m.
Balcony Area	63 Sq.ft. / 5.84 Sq.m.
Total Area	758 Sq.ft. / 70.38 Sq.m.



1. All dimensions are in imperial and metric, and measured to structural elements and exclude wall finishes and construction tolerances. 2. All materials, dimensions, and drawings are approximate only. 3. Information is subject to change without notice, at developer's absolute discretion. 4. Actual area may vary from the stated area. 5. Drawings not to scale. 6. All images used are for illustrative purposes only and do not represent the actual size, features, specifications, fittings, and furnishings. 7. The developer reserves the right to make revisions/alterations, at its absolute discretion, without any liability whatsoever.



1. All dimensions are in imperial and metric, and measured to structural elements and exclude wall finishes and construction tolerances. 2. All materials, dimensions, and drawings are approximate only. 3. Information is subject to change without notice, at developer's absolute discretion. 4. Actual area may vary from the stated area. 5. Drawings not to scale. 6. All images used are for illustrative purposes only and do not represent the actual size, features, specifications, fittings, and furnishings. 7. The developer reserves the right to make revisions/alterations, at its absolute discretion, without any liability whatsoever.



DUBAI CREEK

HARBOUR



TOWER 2

2 BEDROOM W/ TERRACE

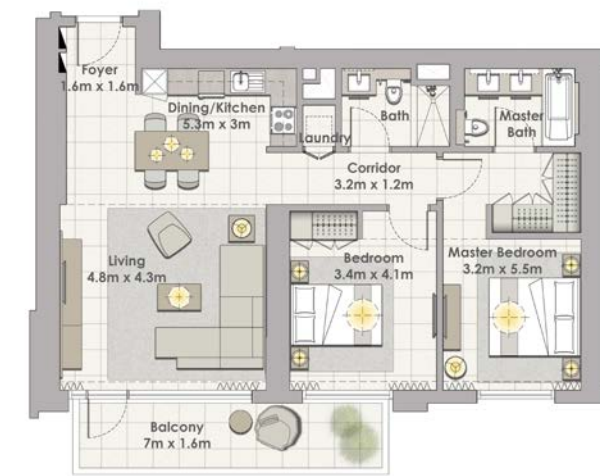
UNIT 05 / LEVEL 1



Suite Area	1112 Sq.ft. / 103.30 Sq.m.
Balcony Area	133 Sq.ft. / 12.31 Sq.m.
Total Area	1245 Sq.ft. / 115.61 Sq.m.

DUBAI CREEK

HARBOUR



TOWER 2

2 BEDROOM W/ TERRACE

UNIT 01 / LEVEL 1



Suite Area	1075 Sq.ft. / 99.89 Sq.m.
Balcony Area	133 Sq.ft. / 12.31 Sq.m.
Total Area	1208 Sq.ft. / 112.20 Sq.m.



1. All dimensions are in imperial and metric, and measured to structural elements and exclude wall finishes and construction tolerances. 2. All materials, dimensions, and drawings are approximate only. 3. Information is subject to change without notice, at developer's absolute discretion. 4. Actual area may vary from the stated area. 5. Drawings not to scale. 6. All images used are for illustrative purposes only and do not represent the actual size, features, specifications, fittings, and furnishings. 7. The developer reserves the right to make revisions/alterations, at its absolute discretion, without any liability whatsoever.



1. All dimensions are in imperial and metric, and measured to structural elements and exclude wall finishes and construction tolerances. 2. All materials, dimensions, and drawings are approximate only. 3. Information is subject to change without notice, at developer's absolute discretion. 4. Actual area may vary from the stated area. 5. Drawings not to scale. 6. All images used are for illustrative purposes only and do not represent the actual size, features, specifications, fittings, and furnishings. 7. The developer reserves the right to make revisions/alterations, at its absolute discretion, without any liability whatsoever.

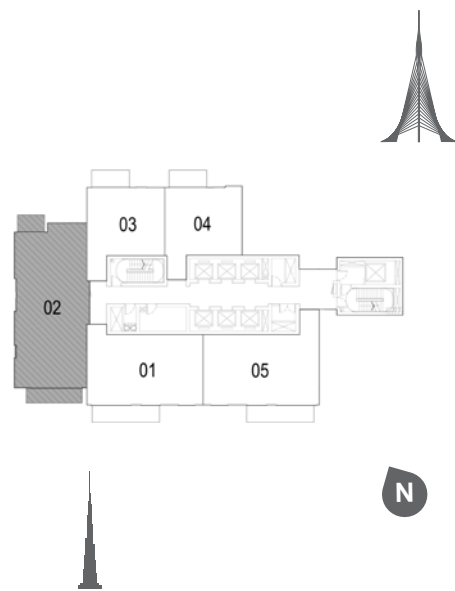
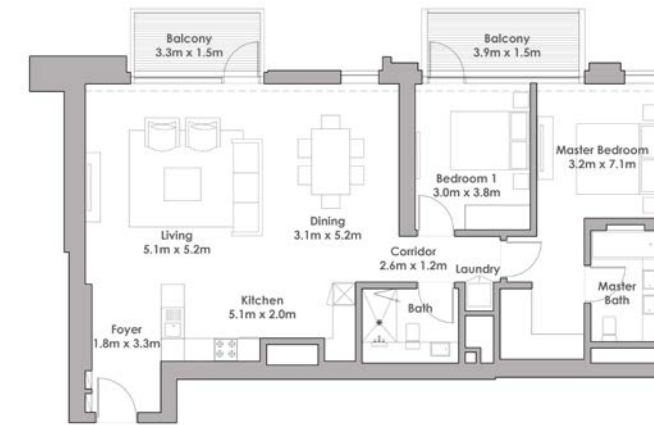
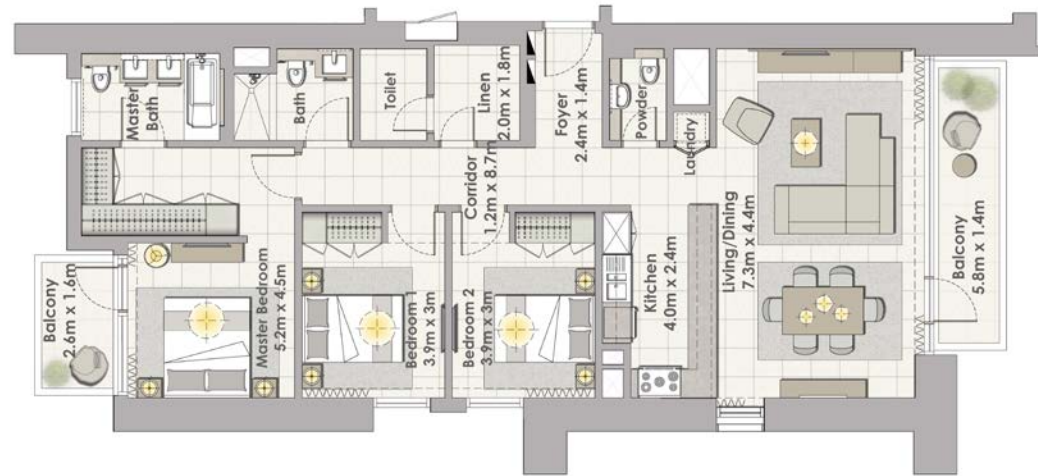


DUBAI CREEK

HARBOUR

DUBAI CREEK

HARBOUR

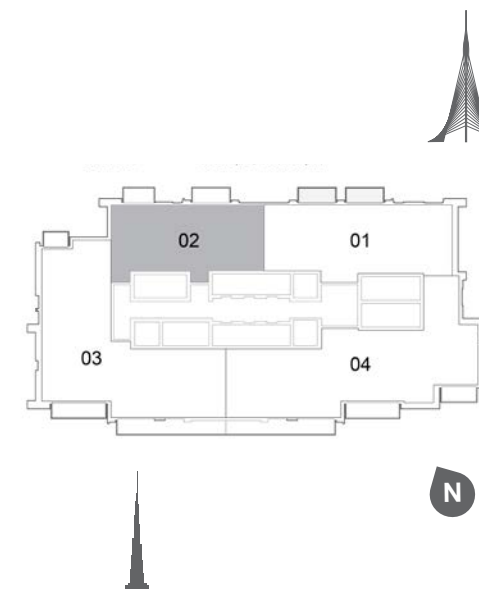


TOWER 2

3 BEDROOM W/ TERRACE

UNIT 02 / LEVEL 1

Suite Area	1463 Sq.ft. / 135.96 Sq.m.
Balcony Area	162 Sq.ft. / 15.09 Sq.m.
Total Area	1625 Sq.ft. / 151.05 Sq.m.



TOWER 2

2 BEDROOM W/ TERRACE

UNIT 02 / LEVEL 29-30

Suite Area	1241 Sq.ft. / 115.32 Sq.m.
Balcony Area	139 Sq.ft. / 12.91 Sq.m.
Total Area	1380 Sq.ft. / 128.23 Sq.m.



1. All dimensions are in imperial and metric, and measured to structural elements and exclude wall finishes and construction tolerances. 2. All materials, dimensions, and drawings are approximate only. 3. Information is subject to change without notice, at developer's absolute discretion. 4. Actual area may vary from the stated area. 5. Drawings not to scale. 6. All images used are for illustrative purposes only and do not represent the actual size, features, specifications, fittings, and furnishings. 7. The developer reserves the right to make revisions/alterations, at its absolute discretion, without any liability whatsoever.

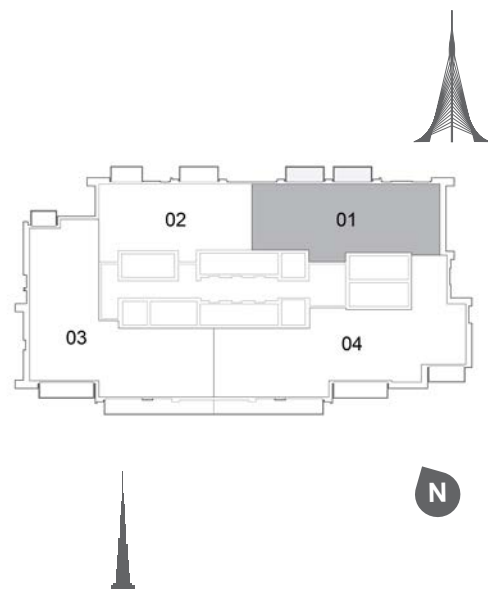
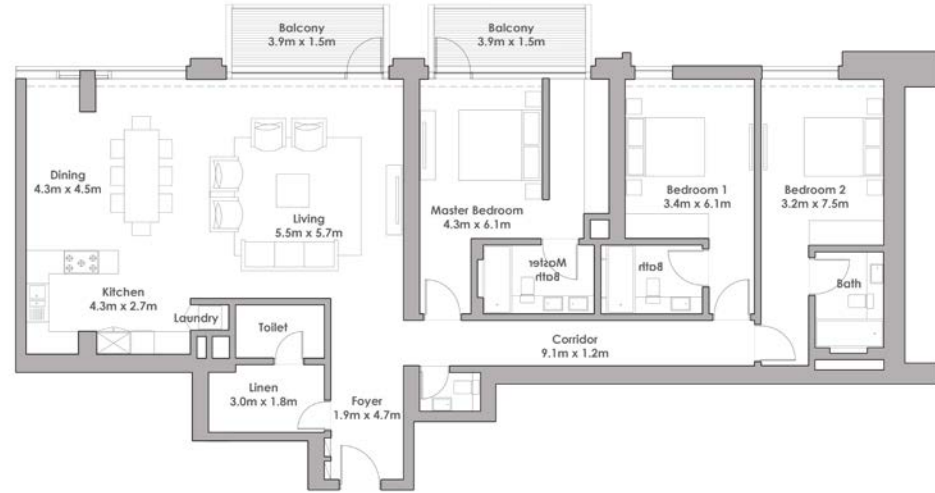


1. All dimensions are in imperial and metric, and measured to structural elements and exclude wall finishes and construction tolerances. 2. All materials, dimensions, and drawings are approximate only. 3. Information is subject to change without notice, at developer's absolute discretion. 4. Actual area may vary from the stated area. 5. Drawings not to scale. 6. All images used are for illustrative purposes only and do not represent the actual size, features, specifications, fittings, and furnishings. 7. The developer reserves the right to make revisions/alterations, at its absolute discretion, without any liability whatsoever.



DUBAI CREEK

HARBOUR



TOWER 2

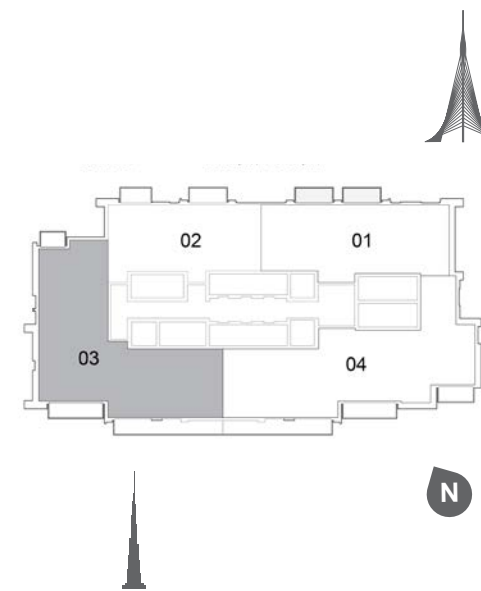
3 BEDROOM W/ TERRACE

UNIT 01 / LEVEL 29-30

Suite Area	2026 Sq.ft. / 188.24 Sq.m.
Balcony Area	152 Sq.ft. / 14.13 Sq.m.
Total Area	2178 Sq.ft. / 202.37 Sq.m.

DUBAI CREEK

HARBOUR



TOWER 2

4 BEDROOM W/ TERRACE

UNIT 03 / LEVEL 29-30

Suite Area	2585 Sq.ft. / 240.15 Sq.m.
Balcony Area	382 Sq.ft. / 35.45 Sq.m.
Total Area	2967 Sq.ft. / 275.6 Sq.m.



1. All dimensions are in imperial and metric, and measured to structural elements and exclude wall finishes and construction tolerances. 2. All materials, dimensions, and drawings are approximate only. 3. Information is subject to change without notice, at developer's absolute discretion. 4. Actual area may vary from the stated area. 5. Drawings not to scale. 6. All images used are for illustrative purposes only and do not represent the actual size, features, specifications, fittings, and furnishings. 7. The developer reserves the right to make revisions/alterations, at its absolute discretion, without any liability whatsoever.



1. All dimensions are in imperial and metric, and measured to structural elements and exclude wall finishes and construction tolerances. 2. All materials, dimensions, and drawings are approximate only. 3. Information is subject to change without notice, at developer's absolute discretion. 4. Actual area may vary from the stated area. 5. Drawings not to scale. 6. All images used are for illustrative purposes only and do not represent the actual size, features, specifications, fittings, and furnishings. 7. The developer reserves the right to make revisions/alterations, at its absolute discretion, without any liability whatsoever.

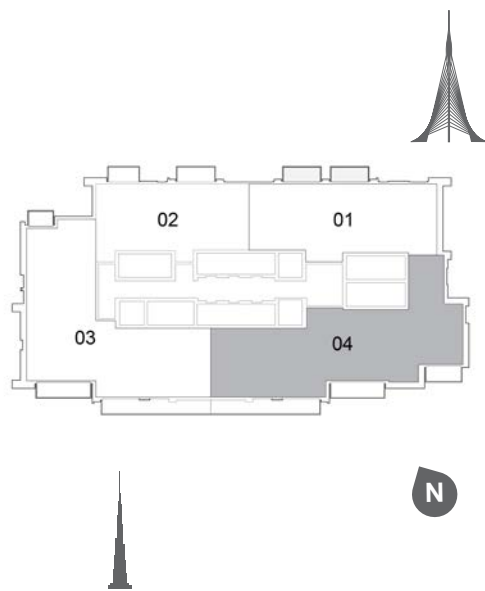
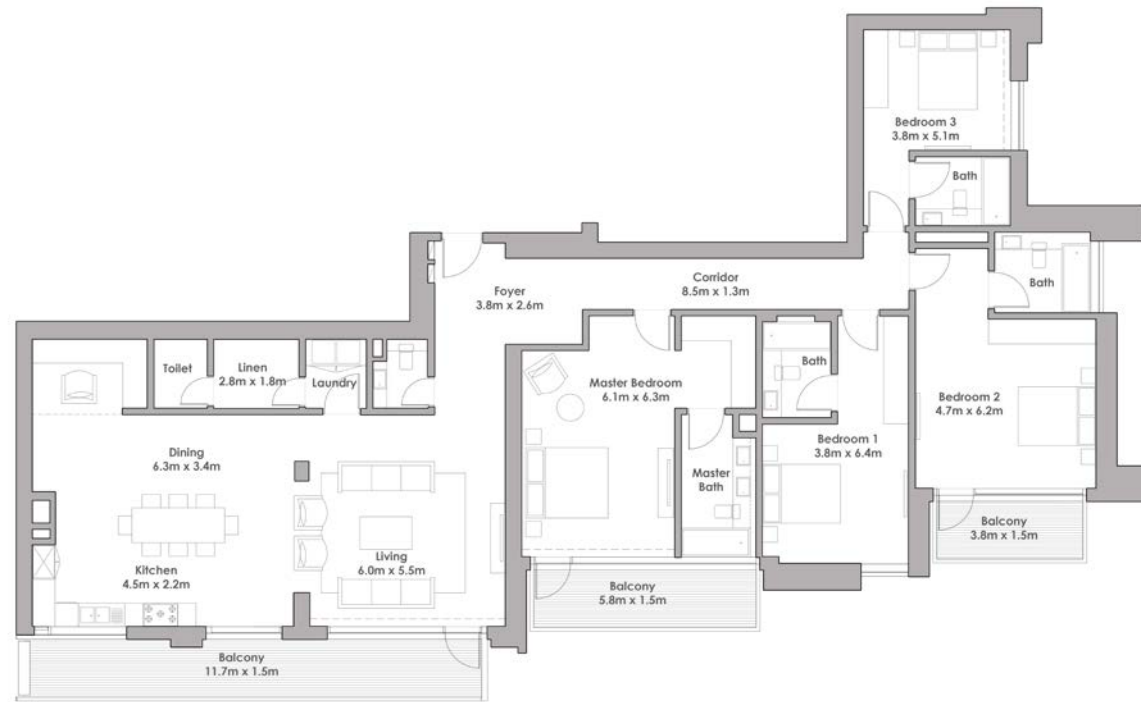


DUBAI CREEK

HARBOUR

DUBAI CREEK

HARBOUR

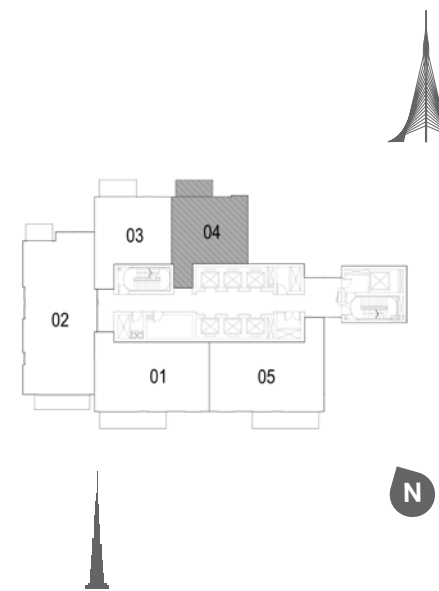


TOWER 2

4 BEDROOM W/ TERRACE

UNIT 04/ LEVEL 29-30

Suite Area	2647 Sq.ft. / 245.91 Sq.m.
Balcony Area	401 Sq.ft. / 37.23 Sq.m.
Total Area	3048 Sq.ft. / 283.23 Sq.m.



TOWER 2

1 BEDROOM W/ TERRACE

UNIT 04/ LEVEL P02

Suite Area	707 Sq.ft. / 65.66 Sq.m.
Balcony Area	76 Sq.ft. / 7.07 Sq.m.
Total Area	783 Sq.ft. / 72.73 Sq.m.



1. All dimensions are in imperial and metric, and measured to structural elements and exclude wall finishes and construction tolerances. 2. All materials, dimensions, and drawings are approximate only. 3. Information is subject to change without notice, at developer's absolute discretion. 4. Actual area may vary from the stated area. 5. Drawings not to scale. 6. All images used are for illustrative purposes only and do not represent the actual size, features, specifications, fittings, and furnishings. 7. The developer reserves the right to make revisions/alterations, at its absolute discretion, without any liability whatsoever.



1. All dimensions are in imperial and metric, and measured to structural elements and exclude wall finishes and construction tolerances. 2. All materials, dimensions, and drawings are approximate only. 3. Information is subject to change without notice, at developer's absolute discretion. 4. Actual area may vary from the stated area. 5. Drawings not to scale. 6. All images used are for illustrative purposes only and do not represent the actual size, features, specifications, fittings, and furnishings. 7. The developer reserves the right to make revisions/alterations, at its absolute discretion, without any liability whatsoever.



DUBAI CREEK

HARBOUR



TOWER 2

1 BEDROOM W/ TERRACE

UNIT 03 / LEVEL P02



Suite Area	695 Sq.ft. / 64.54 Sq.m.
Balcony Area	63 Sq.ft. / 5.84 Sq.m.
Total Area	758 Sq.ft. / 70.38 Sq.m.

DUBAI CREEK

HARBOUR



TOWER 2

2 BEDROOM W/ TERRACE

UNIT 05 / LEVEL P02



Suite Area	1113 Sq.ft. / 103.40 Sq.m.
Balcony Area	133 Sq.ft. / 12.31 Sq.m.
Total Area	1246 Sq.ft. / 115.7 Sq.m.



1. All dimensions are in imperial and metric, and measured to structural elements and exclude wall finishes and construction tolerances. 2. All materials, dimensions, and drawings are approximate only. 3. Information is subject to change without notice, at developer's absolute discretion. 4. Actual area may vary from the stated area. 5. Drawings not to scale. 6. All images used are for illustrative purposes only and do not represent the actual size, features, specifications, fittings, and furnishings. 7. The developer reserves the right to make revisions/alterations, at its absolute discretion, without any liability whatsoever.



1. All dimensions are in imperial and metric, and measured to structural elements and exclude wall finishes and construction tolerances. 2. All materials, dimensions, and drawings are approximate only. 3. Information is subject to change without notice, at developer's absolute discretion. 4. Actual area may vary from the stated area. 5. Drawings not to scale. 6. All images used are for illustrative purposes only and do not represent the actual size, features, specifications, fittings, and furnishings. 7. The developer reserves the right to make revisions/alterations, at its absolute discretion, without any liability whatsoever.

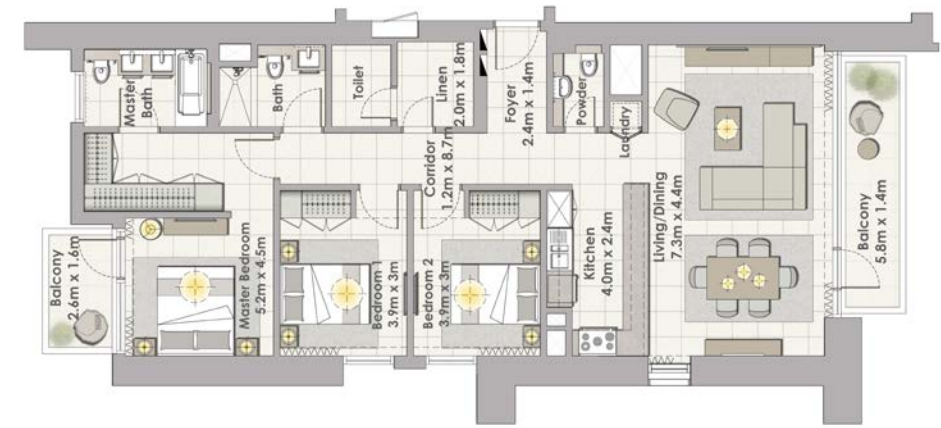
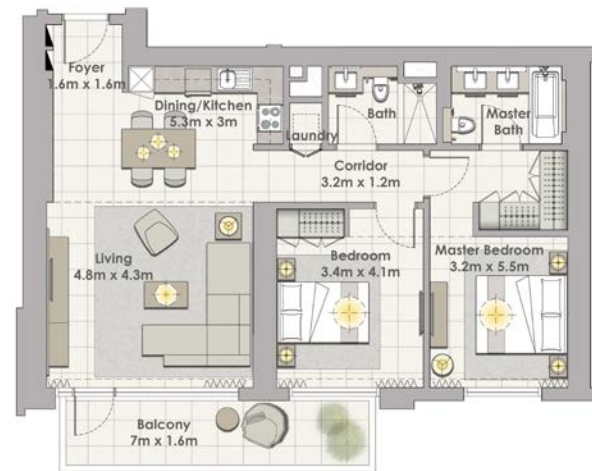


DUBAI CREEK

HARBOUR

DUBAI CREEK

HARBOUR



TOWER 2

2 BEDROOM W/ TERRACE

UNIT 01 / LEVEL P02



TOWER 2

3 BEDROOM W/ TERRACE

UNIT 02 / LEVEL P02



Suite Area	1074 Sq.ft. / 99.78 Sq.m.
Balcony Area	133 Sq.ft. / 12.31 Sq.m.
Total Area	1207 Sq.ft. / 112.09 Sq.m.

Suite Area	1459 Sq.ft. / 135.51 Sq.m.
Balcony Area	162 Sq.ft. / 15.09 Sq.m.
Total Area	1621 Sq.ft. / 150.60 Sq.m.



1. All dimensions are in imperial and metric, and measured to structural elements and exclude wall finishes and construction tolerances. 2. All materials, dimensions, and drawings are approximate only. 3. Information is subject to change without notice, at developer's absolute discretion. 4. Actual area may vary from the stated area. 5. Drawings not to scale. 6. All images used are for illustrative purposes only and do not represent the actual size, features, specifications, fittings, and furnishings. 7. The developer reserves the right to make revisions/alterations, at its absolute discretion, without any liability whatsoever.

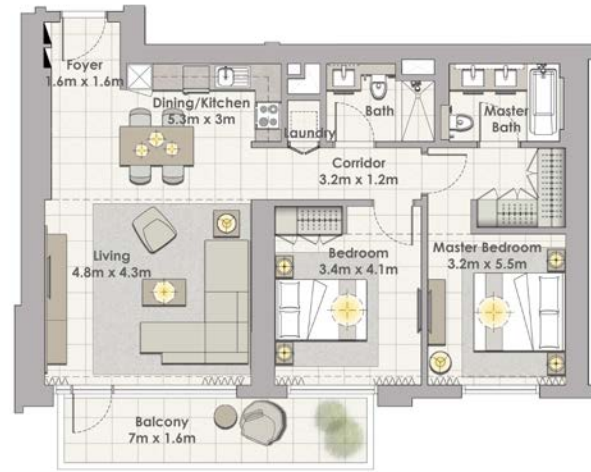


1. All dimensions are in imperial and metric, and measured to structural elements and exclude wall finishes and construction tolerances. 2. All materials, dimensions, and drawings are approximate only. 3. Information is subject to change without notice, at developer's absolute discretion. 4. Actual area may vary from the stated area. 5. Drawings not to scale. 6. All images used are for illustrative purposes only and do not represent the actual size, features, specifications, fittings, and furnishings. 7. The developer reserves the right to make revisions/alterations, at its absolute discretion, without any liability whatsoever.



DUBAI CREEK

HARBOUR



TOWER 2

2 BEDROOM W/ TERRACE

UNIT 01/ LEVEL P03



Suite Area	1065 Sq.ft. / 98.94 Sq.m.
Balcony Area	133 Sq.ft. / 12.31 Sq.m.
Total Area	1198 Sq.ft. / 111.25 Sq.m.

DUBAI CREEK

HARBOUR



TOWER 2

1 BEDROOM W/ TERRACE

UNIT 04 / LEVEL P03



Suite Area	722 Sq.ft. / 67.06 Sq.m.
Balcony Area	76 Sq.ft. / 7.07 Sq.m.
Total Area	798 Sq.ft. / 74.13 Sq.m.



1. All dimensions are in imperial and metric, and measured to structural elements and exclude wall finishes and construction tolerances. 2. All materials, dimensions, and drawings are approximate only. 3. Information is subject to change without notice, at developer's absolute discretion. 4. Actual area may vary from the stated area. 5. Drawings not to scale. 6. All images used are for illustrative purposes only and do not represent the actual size, features, specifications, fittings, and furnishings. 7. The developer reserves the right to make revisions/alterations, at its absolute discretion, without any liability whatsoever.



1. All dimensions are in imperial and metric, and measured to structural elements and exclude wall finishes and construction tolerances. 2. All materials, dimensions, and drawings are approximate only. 3. Information is subject to change without notice, at developer's absolute discretion. 4. Actual area may vary from the stated area. 5. Drawings not to scale. 6. All images used are for illustrative purposes only and do not represent the actual size, features, specifications, fittings, and furnishings. 7. The developer reserves the right to make revisions/alterations, at its absolute discretion, without any liability whatsoever.



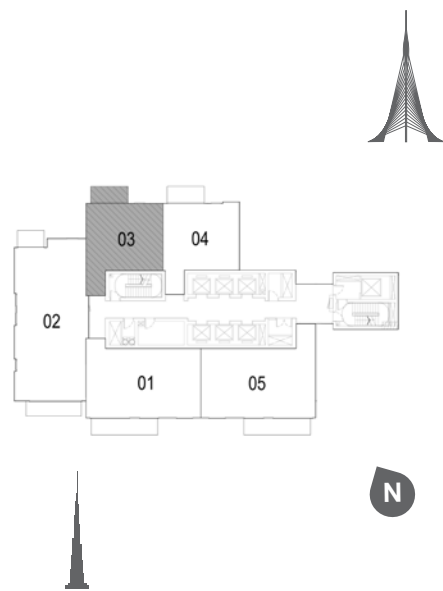
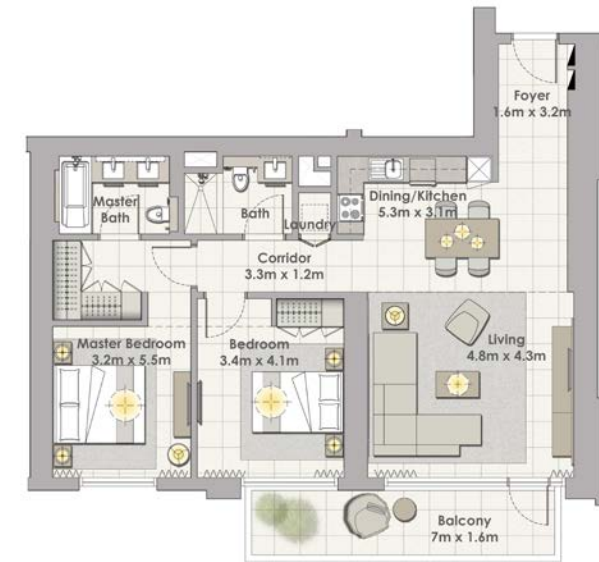
DUBAI CREEK

HARBOUR



DUBAI CREEK

HARBOUR

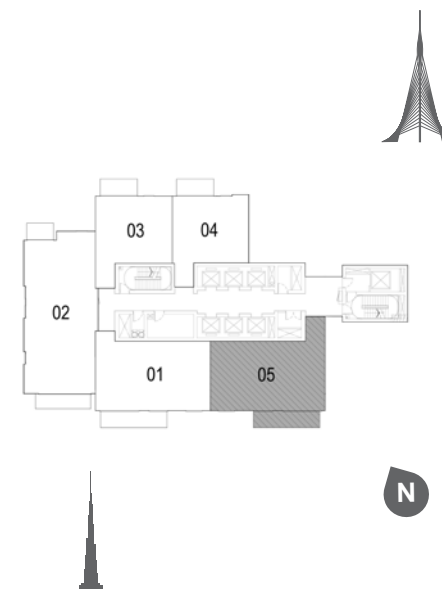


TOWER 2

1 BEDROOM W/ TERRACE

UNIT 03 / LEVEL P03

Suite Area	711 Sq.ft. / 66.07 Sq.m.
Balcony Area	63 Sq.ft. / 71.91 Sq.m.
Total Area	774 Sq.ft. / 71.91 Sq.m.



TOWER 2

2 BEDROOM W/ TERRACE

UNIT 05 / LEVEL P03

Suite Area	1113 Sq.ft. / 103.40 Sq.m.
Balcony Area	133 Sq.ft. / 12.31 Sq.m.
Total Area	1246 Sq.ft. / 115.71 Sq.m.



1. All dimensions are in imperial and metric, and measured to structural elements and exclude wall finishes and construction tolerances. 2. All materials, dimensions, and drawings are approximate only. 3. Information is subject to change without notice, at developer's absolute discretion. 4. Actual area may vary from the stated area. 5. Drawings not to scale. 6. All images used are for illustrative purposes only and do not represent the actual size, features, specifications, fittings, and furnishings. 7. The developer reserves the right to make revisions/alterations, at its absolute discretion, without any liability whatsoever.



1. All dimensions are in imperial and metric, and measured to structural elements and exclude wall finishes and construction tolerances. 2. All materials, dimensions, and drawings are approximate only. 3. Information is subject to change without notice, at developer's absolute discretion. 4. Actual area may vary from the stated area. 5. Drawings not to scale. 6. All images used are for illustrative purposes only and do not represent the actual size, features, specifications, fittings, and furnishings. 7. The developer reserves the right to make revisions/alterations, at its absolute discretion, without any liability whatsoever.

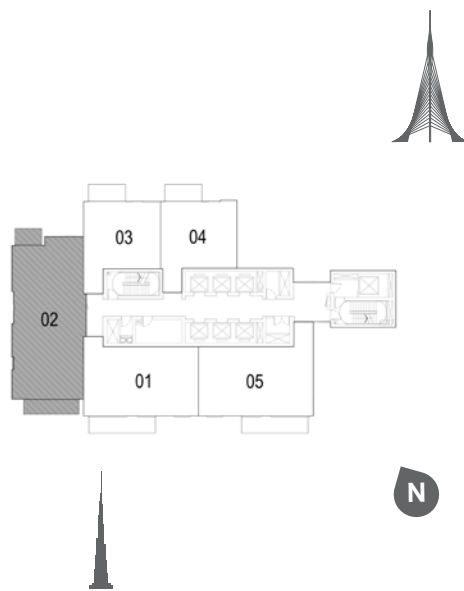
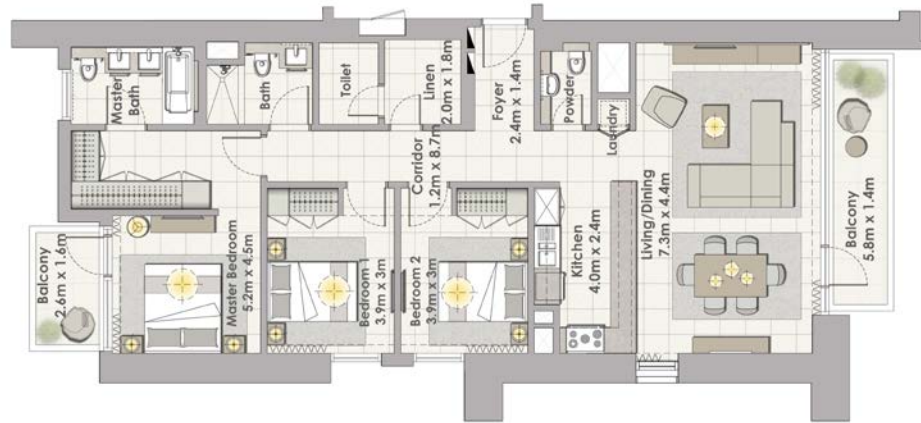


DUBAI CREEK

HARBOUR

DUBAI CREEK

HARBOUR

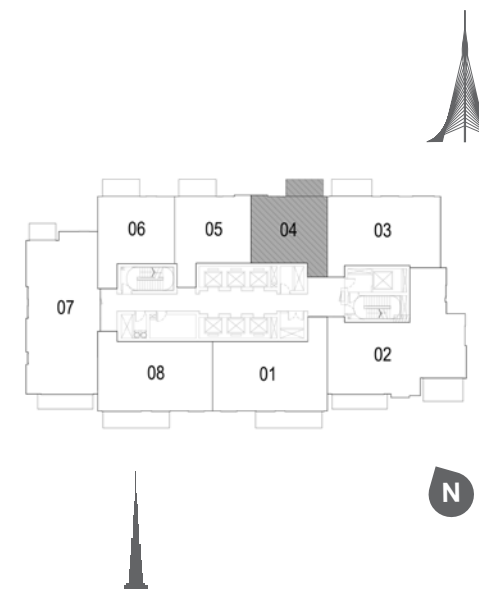


TOWER 2

3 BEDROOM W/ TERRACE

UNIT 02/ LEVEL P03

Suite Area	1468 Sq.ft. / 136.41 Sq.m.
Balcony Area	162 Sq.ft. / 15.09 Sq.m.
Total Area	1637 Sq.ft. / 151.50 Sq.m.



TOWER 2

1 BEDROOM W/ TERRACE

UNIT 04/ LEVEL 2-17

Suite Area	706 Sq.ft. / 65.63 Sq.m.
Balcony Area	76 Sq.ft. / 7.03 Sq.m.
Total Area	782 Sq.ft. / 72.66 Sq.m.



1. All dimensions are in imperial and metric, and measured to structural elements and exclude wall finishes and construction tolerances. 2. All materials, dimensions, and drawings are approximate only. 3. Information is subject to change without notice, at developer's absolute discretion. 4. Actual area may vary from the stated area. 5. Drawings not to scale. 6. All images used are for illustrative purposes only and do not represent the actual size, features, specifications, fittings, and furnishings. 7. The developer reserves the right to make revisions/alterations, at its absolute discretion, without any liability whatsoever.



1. All dimensions are in imperial and metric, and measured to structural elements and exclude wall finishes and construction tolerances. 2. All materials, dimensions, and drawings are approximate only. 3. Information is subject to change without notice, at developer's absolute discretion. 4. Actual area may vary from the stated area. 5. Drawings not to scale. 6. All images used are for illustrative purposes only and do not represent the actual size, features, specifications, fittings, and furnishings. 7. The developer reserves the right to make revisions/alterations, at its absolute discretion, without any liability whatsoever.



DUBAI CREEK

HARBOUR



TOWER 2

1 BEDROOM W/ TERRACE

UNIT 05/ LEVEL 2-17



Suite Area	707 Sq.ft. / 65.70 Sq.m.
Balcony Area	76 Sq.ft. / 7.03 Sq.m.
Total Area	783 Sq.ft. / 72.73 Sq.m.

DUBAI CREEK

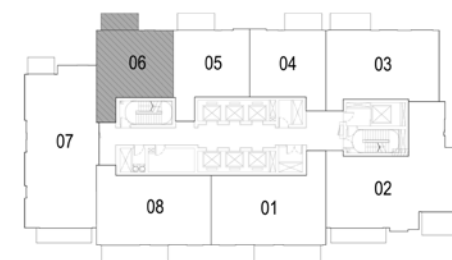
HARBOUR



TOWER 2

1 BEDROOM W/ TERRACE

UNIT 06/ LEVEL 2-17



Suite Area	693 Sq.ft. / 64.34 Sq.m.
Balcony Area	63 Sq.ft. / 5.81 Sq.m.
Total Area	756 Sq.ft. / 70.15 Sq.m.



1. All dimensions are in imperial and metric, and measured to structural elements and exclude wall finishes and construction tolerances. 2. All materials, dimensions, and drawings are approximate only. 3. Information is subject to change without notice, at developer's absolute discretion. 4. Actual area may vary from the stated area. 5. Drawings not to scale. 6. All images used are for illustrative purposes only and do not represent the actual size, features, specifications, fittings, and furnishings. 7. The developer reserves the right to make revisions/alterations, at its absolute discretion, without any liability whatsoever.



1. All dimensions are in imperial and metric, and measured to structural elements and exclude wall finishes and construction tolerances. 2. All materials, dimensions, and drawings are approximate only. 3. Information is subject to change without notice, at developer's absolute discretion. 4. Actual area may vary from the stated area. 5. Drawings not to scale. 6. All images used are for illustrative purposes only and do not represent the actual size, features, specifications, fittings, and furnishings. 7. The developer reserves the right to make revisions/alterations, at its absolute discretion, without any liability whatsoever.



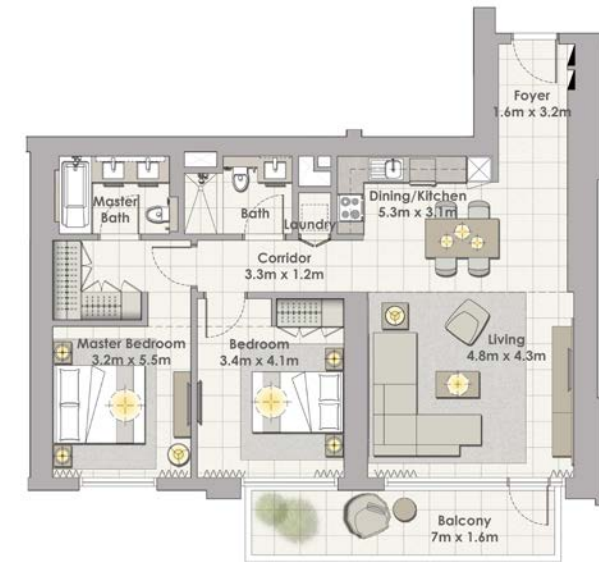
DUBAI CREEK

HARBOUR



DUBAI CREEK

HARBOUR



TOWER 2

2 BEDROOM W/ TERRACE

UNIT 03/ LEVEL 2-17



Suite Area	1063 Sq.ft. / 98.80 Sq.m.
Balcony Area	76 Sq.ft. / 7.03 Sq.m.
Total Area	1139 Sq.ft. / 105.83 Sq.m.



TOWER 2

2 BEDROOM W/ TERRACE

UNIT 01/ LEVEL 2-17



Suite Area	1112 Sq.ft. / 103.30 Sq.m.
Balcony Area	133 Sq.ft. / 12.31 Sq.m.
Total Area	1245 Sq.ft. / 115.61 Sq.m.



1. All dimensions are in imperial and metric, and measured to structural elements and exclude wall finishes and construction tolerances. 2. All materials, dimensions, and drawings are approximate only. 3. Information is subject to change without notice, at developer's absolute discretion. 4. Actual area may vary from the stated area. 5. Drawings not to scale. 6. All images used are for illustrative purposes only and do not represent the actual size, features, specifications, fittings, and furnishings. 7. The developer reserves the right to make revisions/alterations, at its absolute discretion, without any liability whatsoever.

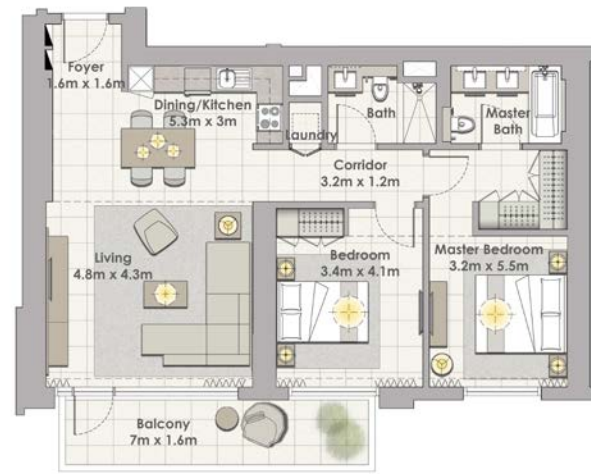


1. All dimensions are in imperial and metric, and measured to structural elements and exclude wall finishes and construction tolerances. 2. All materials, dimensions, and drawings are approximate only. 3. Information is subject to change without notice, at developer's absolute discretion. 4. Actual area may vary from the stated area. 5. Drawings not to scale. 6. All images used are for illustrative purposes only and do not represent the actual size, features, specifications, fittings, and furnishings. 7. The developer reserves the right to make revisions/alterations, at its absolute discretion, without any liability whatsoever.



DUBAI CREEK

HARBOUR



TOWER 2

2 BEDROOM W/ TERRACE

UNIT 08/ LEVEL 2-17



Suite Area	1075 Sq.ft. / 99.89 Sq.m.
Balcony Area	133 Sq.ft. / 12.31 Sq.m.
Total Area	1208 Sq.ft. / 112.20 Sq.m.

DUBAI CREEK

HARBOUR



TOWER 2

3 BEDROOM W/ TERRACE

UNIT 02/ LEVEL 2-17



Suite Area	1515 Sq.ft. / 140.77 Sq.m.
Balcony Area	180 Sq.ft. / 16.71 Sq.m.
Total Area	1695 Sq.ft. / 157.48 Sq.m.



1. All dimensions are in imperial and metric, and measured to structural elements and exclude wall finishes and construction tolerances. 2. All materials, dimensions, and drawings are approximate only. 3. Information is subject to change without notice, at developer's absolute discretion. 4. Actual area may vary from the stated area. 5. Drawings not to scale. 6. All images used are for illustrative purposes only and do not represent the actual size, features, specifications, fittings, and furnishings. 7. The developer reserves the right to make revisions/alterations, at its absolute discretion, without any liability whatsoever.

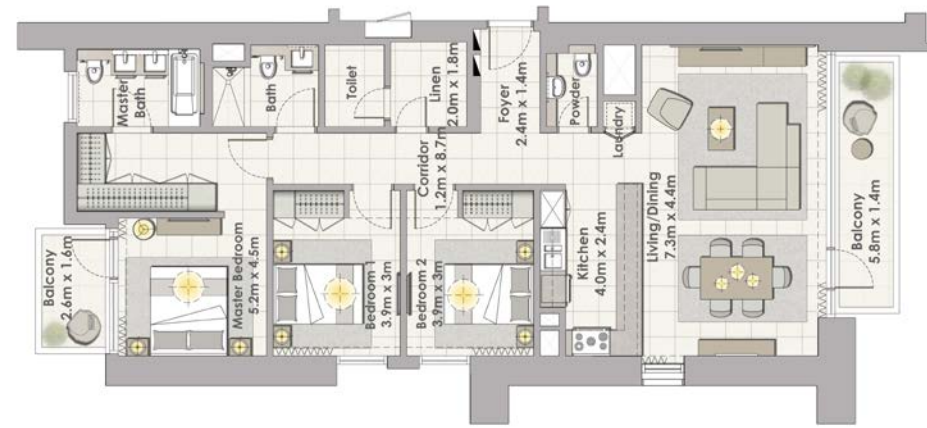


1. All dimensions are in imperial and metric, and measured to structural elements and exclude wall finishes and construction tolerances. 2. All materials, dimensions, and drawings are approximate only. 3. Information is subject to change without notice, at developer's absolute discretion. 4. Actual area may vary from the stated area. 5. Drawings not to scale. 6. All images used are for illustrative purposes only and do not represent the actual size, features, specifications, fittings, and furnishings. 7. The developer reserves the right to make revisions/alterations, at its absolute discretion, without any liability whatsoever.



DUBAI CREEK

HARBOUR



TOWER 2

3 BEDROOM W/ TERRACE

UNIT 07/ LEVEL 2-17



Suite Area	1467 Sq.ft. / 136.30 Sq.m.
Balcony Area	162 Sq.ft. / 15.01 Sq.m.
Total Area	1629 Sq.ft. / 151.31 Sq.m.

DUBAI CREEK

HARBOUR



TOWER 2

1 BEDROOM W/ TERRACE

UNIT 04/ LEVEL 19-28



Suite Area	707 Sq.ft. / 65.68 Sq.m.
Balcony Area	76 Sq.ft. / 7.07 Sq.m.
Total Area	783 Sq.ft. / 72.75 Sq.m.



1. All dimensions are in imperial and metric, and measured to structural elements and exclude wall finishes and construction tolerances. 2. All materials, dimensions, and drawings are approximate only. 3. Information is subject to change without notice, at developer's absolute discretion. 4. Actual area may vary from the stated area. 5. Drawings not to scale. 6. All images used are for illustrative purposes only and do not represent the actual size, features, specifications, fittings, and furnishings. 7. The developer reserves the right to make revisions/alterations, at its absolute discretion, without any liability whatsoever.



1. All dimensions are in imperial and metric, and measured to structural elements and exclude wall finishes and construction tolerances. 2. All materials, dimensions, and drawings are approximate only. 3. Information is subject to change without notice, at developer's absolute discretion. 4. Actual area may vary from the stated area. 5. Drawings not to scale. 6. All images used are for illustrative purposes only and do not represent the actual size, features, specifications, fittings, and furnishings. 7. The developer reserves the right to make revisions/alterations, at its absolute discretion, without any liability whatsoever.



DUBAI CREEK

HARBOUR



TOWER 2

1 BEDROOM W/ TERRACE

UNIT 05/ LEVEL 19-28



Suite Area	707 Sq.ft. / 65.67 Sq.m.
Balcony Area	76 Sq.ft. / 7.07 Sq.m.
Total Area	783 Sq.ft. / 72.74 Sq.m.

DUBAI CREEK

HARBOUR



TOWER 2

1 BEDROOM W/ TERRACE

UNIT 06/ LEVEL 19-28



Suite Area	708 Sq.ft. / 65.77 Sq.m.
Balcony Area	63 Sq.ft. / 5.84 Sq.m.
Total Area	771 Sq.ft. / 72.61 Sq.m.



1. All dimensions are in imperial and metric, and measured to structural elements and exclude wall finishes and construction tolerances. 2. All materials, dimensions, and drawings are approximate only. 3. Information is subject to change without notice, at developer's absolute discretion. 4. Actual area may vary from the stated area. 5. Drawings not to scale. 6. All images used are for illustrative purposes only and do not represent the actual size, features, specifications, fittings, and furnishings. 7. The developer reserves the right to make revisions/alterations, at its absolute discretion, without any liability whatsoever.



1. All dimensions are in imperial and metric, and measured to structural elements and exclude wall finishes and construction tolerances. 2. All materials, dimensions, and drawings are approximate only. 3. Information is subject to change without notice, at developer's absolute discretion. 4. Actual area may vary from the stated area. 5. Drawings not to scale. 6. All images used are for illustrative purposes only and do not represent the actual size, features, specifications, fittings, and furnishings. 7. The developer reserves the right to make revisions/alterations, at its absolute discretion, without any liability whatsoever.



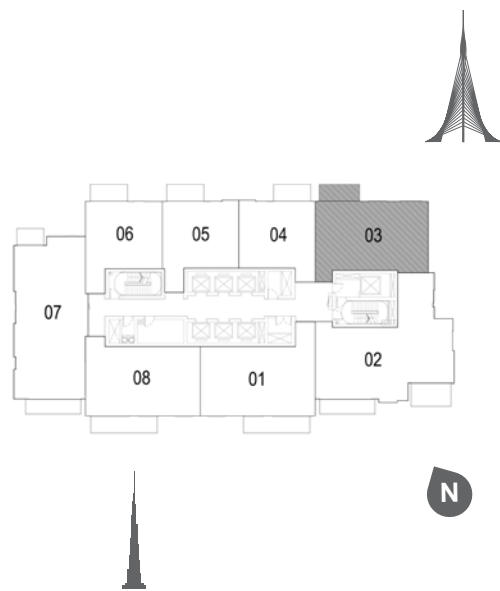
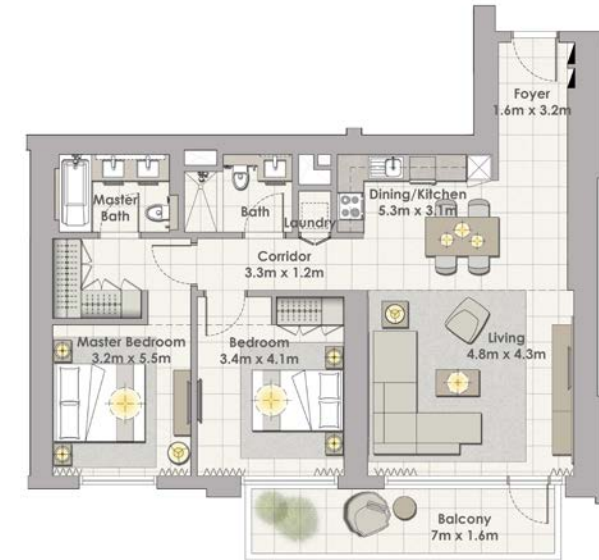
DUBAI CREEK

HARBOUR



DUBAI CREEK

HARBOUR

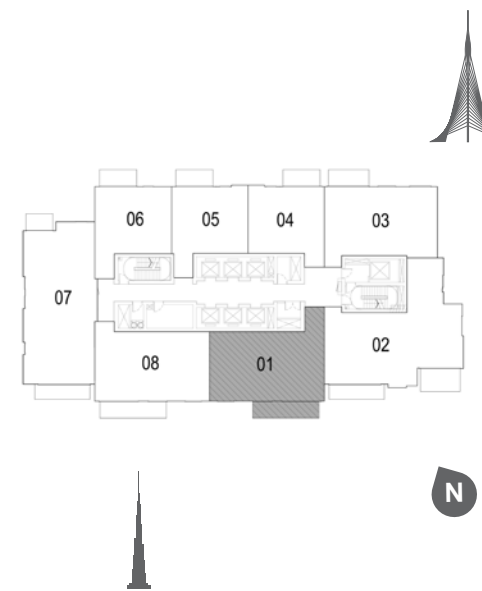


TOWER 2

2 BEDROOM W/ TERRACE

UNIT 03/ LEVEL 19-28

Suite Area	1060 Sq.ft. / 98.49 Sq.m.
Balcony Area	76 Sq.ft. / 7.07 Sq.m.
Total Area	1136 Sq.ft. / 105.56 Sq.m.



TOWER 2

2 BEDROOM W/ TERRACE

UNIT 01/ LEVEL 19-28

Suite Area	1120 Sq.ft. / 104.05 Sq.m.
Balcony Area	133 Sq.ft. / 12.31 Sq.m.
Total Area	1253 Sq.ft. / 116.36 Sq.m.



1. All dimensions are in imperial and metric, and measured to structural elements and exclude wall finishes and construction tolerances. 2. All materials, dimensions, and drawings are approximate only. 3. Information is subject to change without notice, at developer's absolute discretion. 4. Actual area may vary from the stated area. 5. Drawings not to scale. 6. All images used are for illustrative purposes only and do not represent the actual size, features, specifications, fittings, and furnishings. 7. The developer reserves the right to make revisions/alterations, at its absolute discretion, without any liability whatsoever.

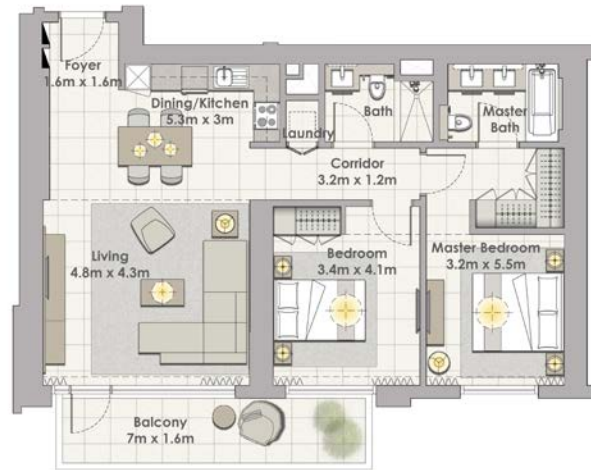


1. All dimensions are in imperial and metric, and measured to structural elements and exclude wall finishes and construction tolerances. 2. All materials, dimensions, and drawings are approximate only. 3. Information is subject to change without notice, at developer's absolute discretion. 4. Actual area may vary from the stated area. 5. Drawings not to scale. 6. All images used are for illustrative purposes only and do not represent the actual size, features, specifications, fittings, and furnishings. 7. The developer reserves the right to make revisions/alterations, at its absolute discretion, without any liability whatsoever.



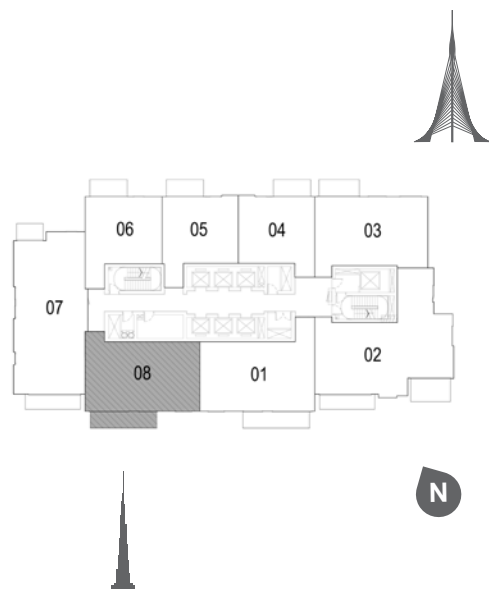
DUBAI CREEK

HARBOUR



DUBAI CREEK

HARBOUR

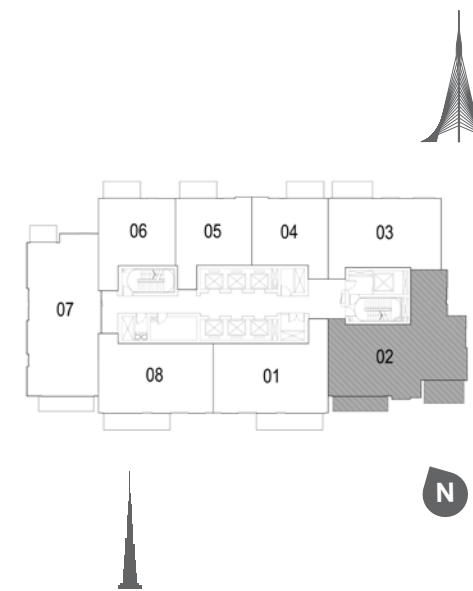


TOWER 2

2 BEDROOM W/ TERRACE

UNIT 08/ LEVEL 19-28

Suite Area	1082 Sq.ft. / 100.54 Sq.m.
Balcony Area	133 Sq.ft. / 12.31 Sq.m.
Total Area	1215 Sq.ft. / 112.85 Sq.m.



TOWER 2

3 BEDROOM W/ TERRACE

UNIT 02/ LEVEL 19-28

Suite Area	1524 Sq.ft. / 141.54 Sq.m.
Balcony Area	180 Sq.ft. / 16.75 Sq.m.
Total Area	1704 Sq.ft. / 158.29 Sq.m.



1. All dimensions are in imperial and metric, and measured to structural elements and exclude wall finishes and construction tolerances. 2. All materials, dimensions, and drawings are approximate only. 3. Information is subject to change without notice, at developer's absolute discretion. 4. Actual area may vary from the stated area. 5. Drawings not to scale. 6. All images used are for illustrative purposes only and do not represent the actual size, features, specifications, fittings, and furnishings. 7. The developer reserves the right to make revisions/alterations, at its absolute discretion, without any liability whatsoever.

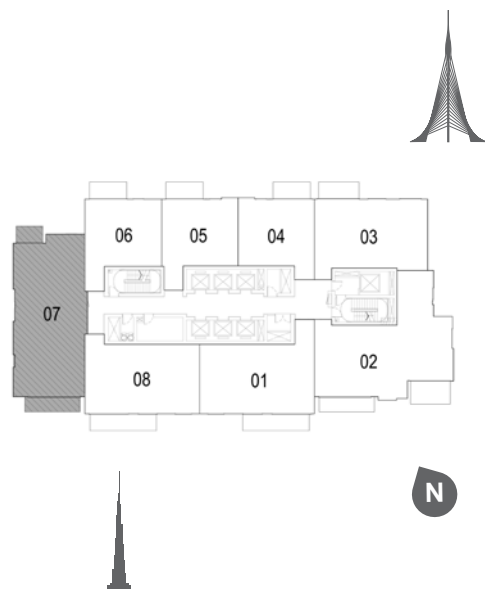
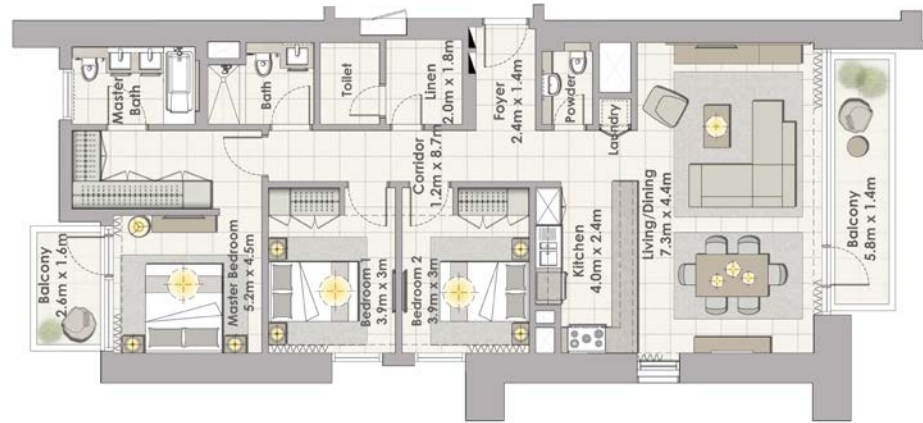


1. All dimensions are in imperial and metric, and measured to structural elements and exclude wall finishes and construction tolerances. 2. All materials, dimensions, and drawings are approximate only. 3. Information is subject to change without notice, at developer's absolute discretion. 4. Actual area may vary from the stated area. 5. Drawings not to scale. 6. All images used are for illustrative purposes only and do not represent the actual size, features, specifications, fittings, and furnishings. 7. The developer reserves the right to make revisions/alterations, at its absolute discretion, without any liability whatsoever.



DUBAI CREEK

HARBOUR



TOWER 2

3 BEDROOM W/ TERRACE

UNIT 07/ LEVEL 19-28

Suite Area	1471 Sq.ft. / 136.65 Sq.m.
Balcony Area	162 Sq.ft. / 15.09 Sq.m.
Total Area	1633 Sq.ft. / 151.74 Sq.m.



1. All dimensions are in imperial and metric, and measured to structural elements and exclude wall finishes and construction tolerances. 2. All materials, dimensions, and drawings are approximate only. 3. Information is subject to change without notice, at developer's absolute discretion. 4. Actual area may vary from the stated area. 5. Drawings not to scale. 6. All images used are for illustrative purposes only and do not represent the actual size, features, specifications, fittings, and furnishings. 7. The developer reserves the right to make revisions/alterations, at its absolute discretion, without any liability whatsoever.



