

# Execution | BaxterLynX

BaxterLynX, part of the BaxterPredict platform, enables companies to create truly connected Service Supply Chains (SSCs), across every workflow, transaction, and trading partner.

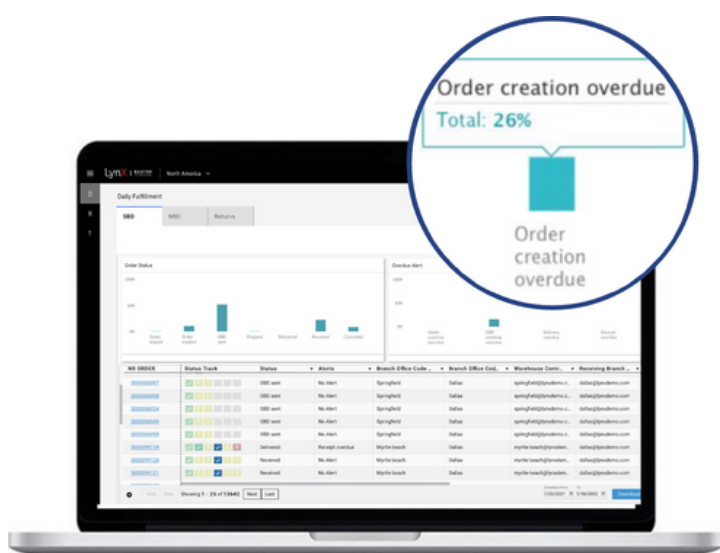
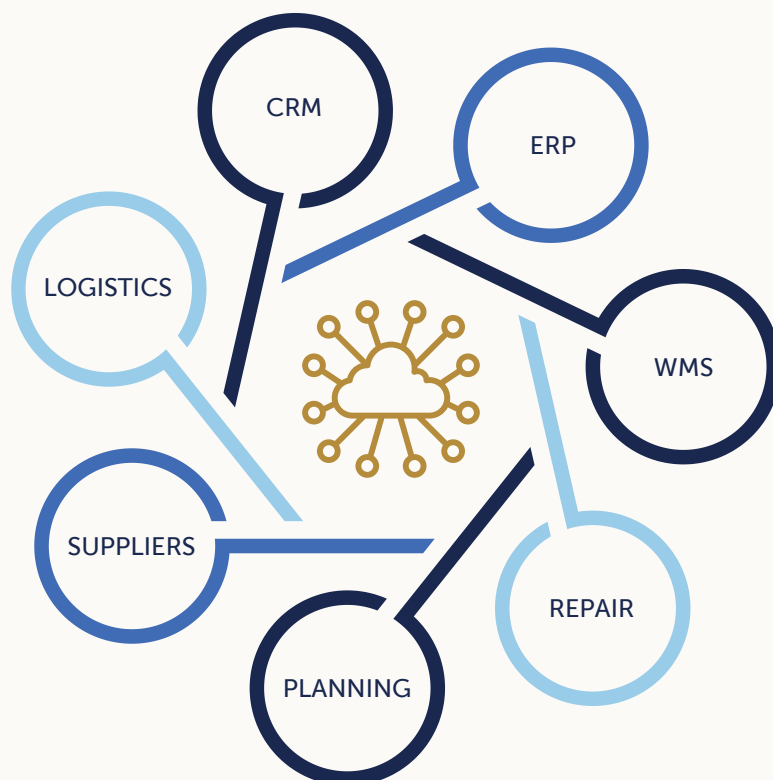
Drive dynamic and proactive operations by avoiding disruption in part delivery with:

- Visibility
- Automation
- Insights
- Control

With visibility across the network, your team becomes a proactive ambassador of the customer experience, boosting your NPS and customer retention.

Synchronize every transaction across your SSC, with a single, collaborative platform that never misses an update on an order.

Our flexible architecture seamlessly integrates and complements every system in your supply chain through configurable data flow connections, resulting in faster answers to order status and ETAs.



## BaxterLynX In Action

Predictive alerts on emerging supply chain events, processes at risk of missing service level commitments, and data issues.

# Key Features

## EXECUTION VISIBILITY & CONTROL

Track all transactions in real-time across process workflows for end-to-end visibility and control over your service operations.

## UNIFIED PLANNING AND EXECUTION

Share approved supply orders and delivery data within a single platform for greater efficiency and resilience.

## ADVANCE WARNING SYSTEM

Act early based on predictive and proactive alerts to prevent SLA breaches and negative customer experiences.

## INTEGRATED TRANSACTION MONITORING

Enable every process partner to proactively track the movement of goods for synchronized execution and timely intervention.

## DATA-DRIVEN QUALITY CONTROLS

Transaction data quality checks for completeness and accuracy, business rule enablement, and automation guardrails.

## BACKORDER MANAGEMENT

Automate backorder management with chaining/substitution options and alternative sourcing locations within SLA-requirements.

## PARTNER BENCHMARKS

Understand and benchmark partner effectiveness and reliability over time.

## WHY BAXTER PLANNING?



### Practitioner Expertise

Decades solving real-world Service Supply Chain problems



### Purpose-Built Technology

End-to-end platform embedded with specialized AI and Data Core



### Industry-Leading Outcomes

Combination of technology and partnership yield accelerated results

## ABOUT BAXTER PLANNING

Baxter Planning is a global leader in Service Supply Chain software, delivering a Service Experience Advantage to the world's most innovative enterprises for over 30 years. The end-to-end BaxterPredict platform empowers organizations to optimize service parts planning, execution, and resolution, driving superior customer experiences, fostering long-term loyalty, and fueling business growth.

By combining purpose-built technology, award-winning AI, decades of practitioner expertise, and a commitment to true partnership, Baxter Planning consistently delivers industry-leading outcomes for its clients.

The company is headquartered in Austin, Texas, United States, with offices around the globe.

For more information, visit  
[www.baxterplanning.com](http://www.baxterplanning.com).