

**BR** BENLOCH  
RANCH

RESIDENTIAL LIVING,  
**REDEFINED.**





# INTRODUCING AN INSPIRING NEW TAKE ON **MOUNTAIN MODERN**

**BR** BENLOCH  
RANCH

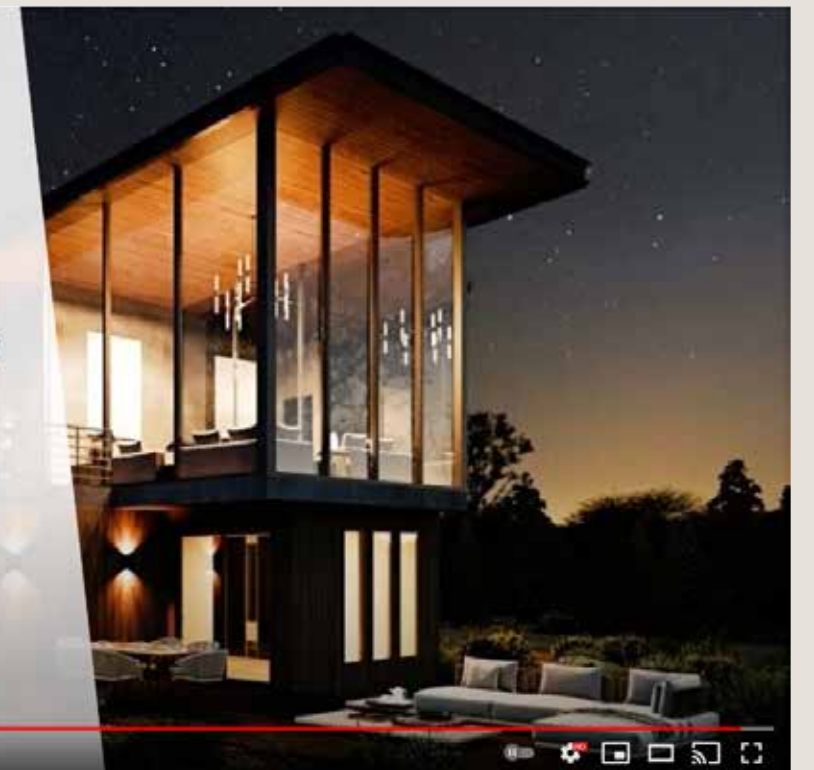
Luxury New Home Community

**PURE MOUNTAIN LIVING**

Home Site Reservations Now Available

[benlochranh.com](http://benlochranh.com)

▶ ⏪ 🔊 0:33 / 0:34





# AN IMMERSIVE LIFESTYLE NESTLED WITHIN THE **WASATCH** AND **UINTA MOUNTAINS**

Only 35 minutes from the Salt Lake City airport  
and only 15 minutes to downtown Park City





WHERE A **BOLD VISION**  
IS REDEFINING RESIDENTIAL  
**MOUNTAIN LIVING**





THE NAME, BENLOCH RANCH, MEANS **“MOUNTAIN LAKES”**







A STARTLINGLY AFFORDABLE

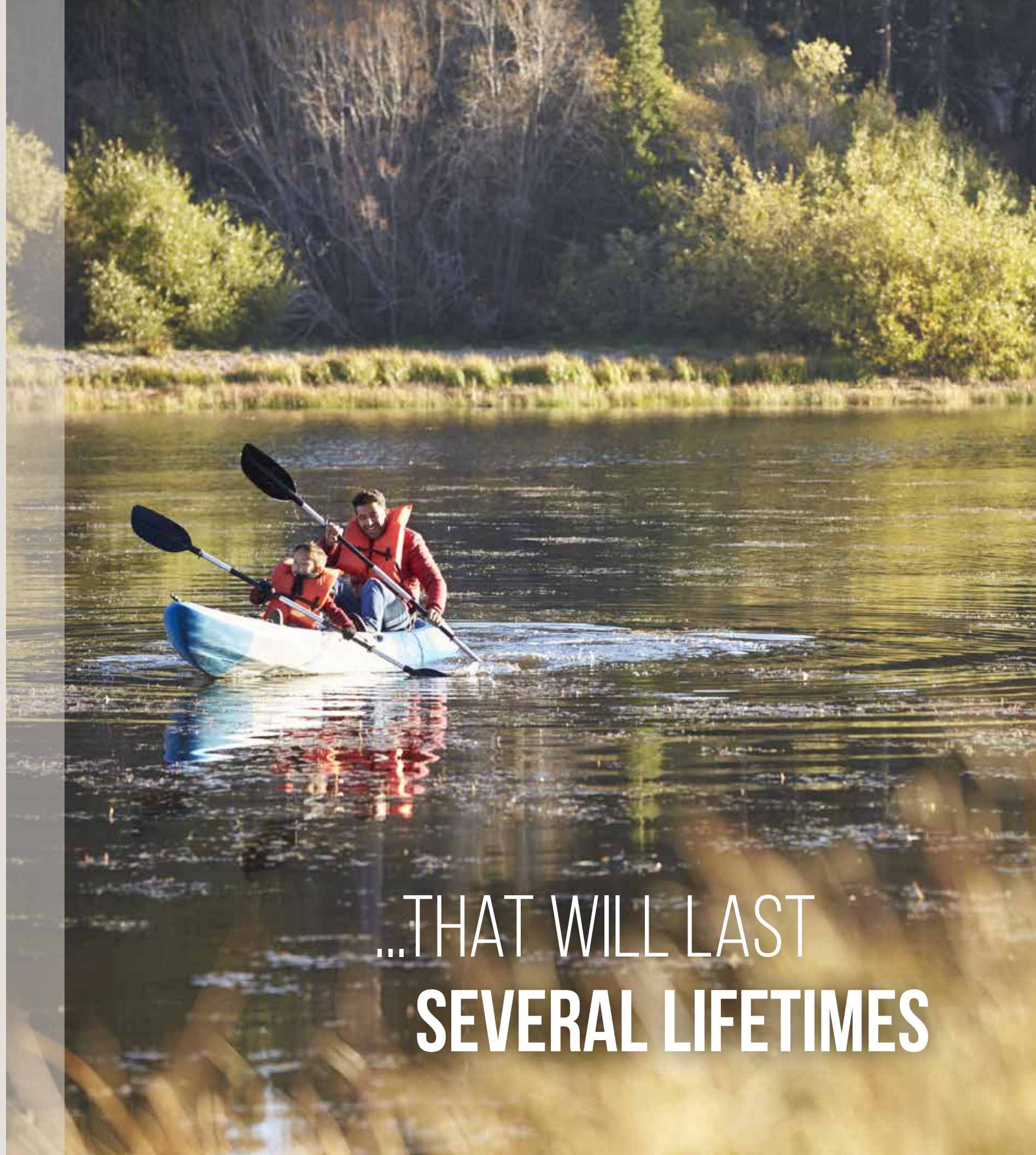
**2,300-ACRE PARADISE**



# WELCOME TO ALL-SEASON ADVENTURES...







...THAT WILL LAST  
**SEVERAL LIFETIMES**



# OVER 10 WORLD CLASS SKI RESORTS WITHIN AN HOUR

Including: Deer Valley, Park City, Alta, Solitude, Brighton, Snowbird, Powder Mountain, & the Canyons

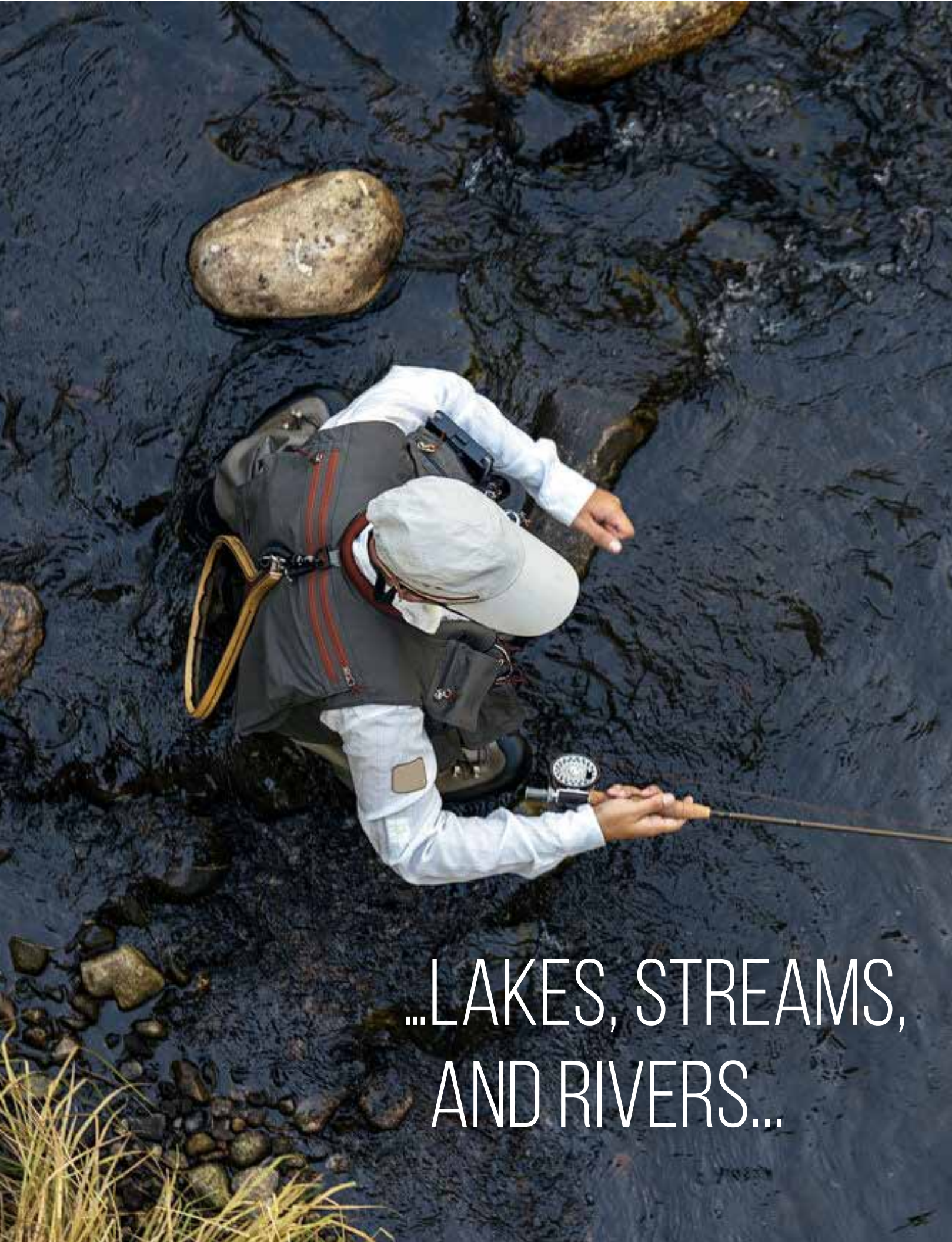




SOME OF UTAH'S **BEST TRAILS...**







...LAKES, STREAMS,  
AND RIVERS...

...AND AWARD-WINNING  
GOLF COURSES





RESERVE YOUR TURNKEY, **HIGH-END HOME**



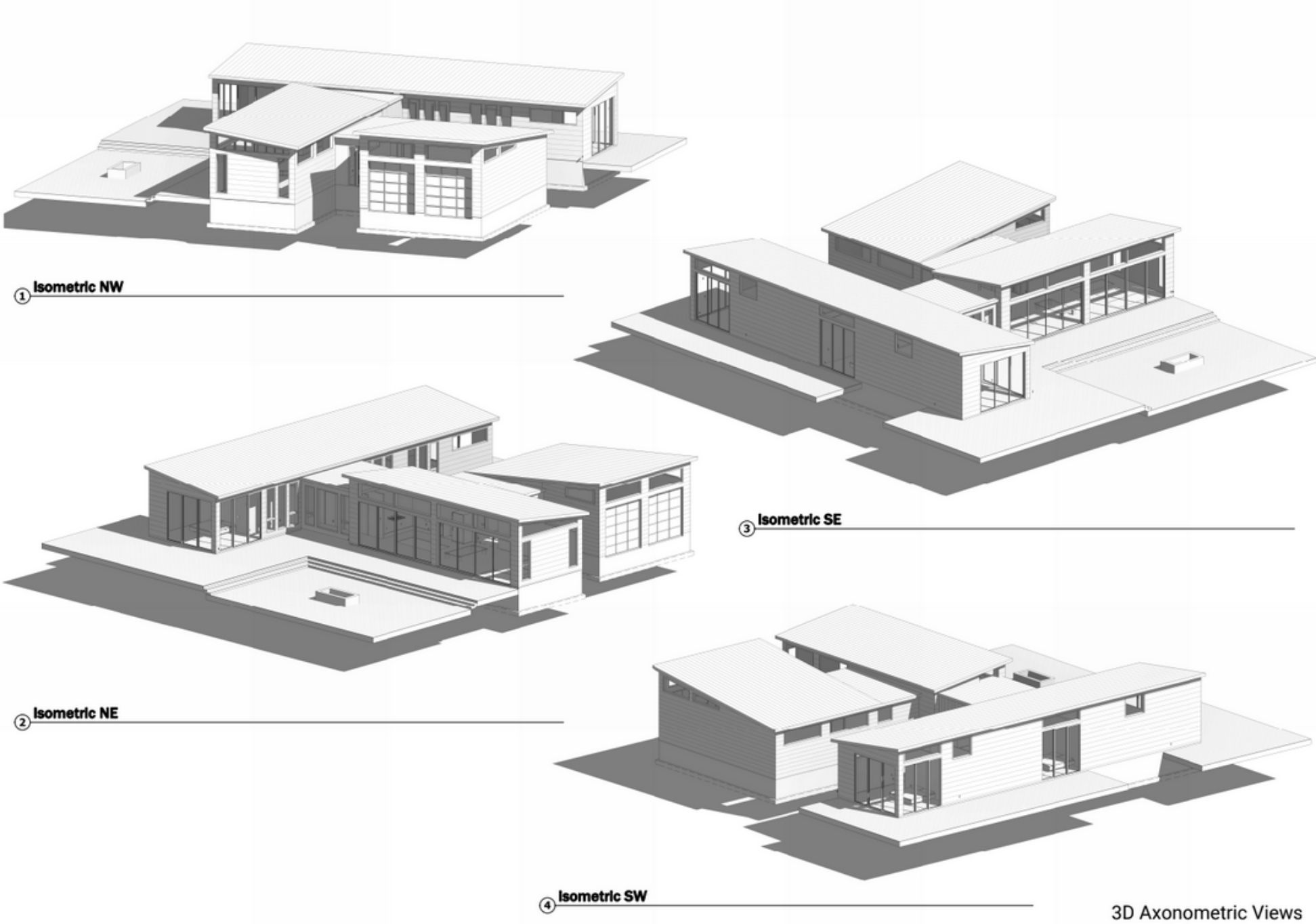


# MADE BY THE TRUSTED MANUFACTURER, WHEELHAUS HOMES



The homes are pre-built offsite, then the modules are trucked in  
90% of WheelHaus construction takes place offsite to streamline  
community development that is **quick & quiet**

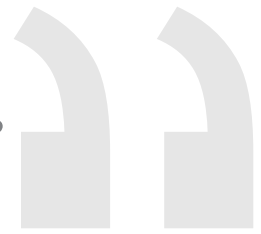




“At Wheelhaus, our priorities are durability, efficient use of space, and sustainability.

We focus on energy efficiency, progressive space management, and top of the line building materials.

Our homes exceed the U.S. Green Building Council’s Gold standard”



Jamie MacKay, Owner of Wheelhaus Homes



BUILT WITH THE HEALTHIEST, NON-TOXIC MATERIALS



# A COMMUNITY COMMITTED TO ENVIRONMENTAL STEWARDSHIP



TESLA

POWERED BY TESLA

The Powerwall 2 has a 13.5 kWh  
energy capacity with 10 yr warranty



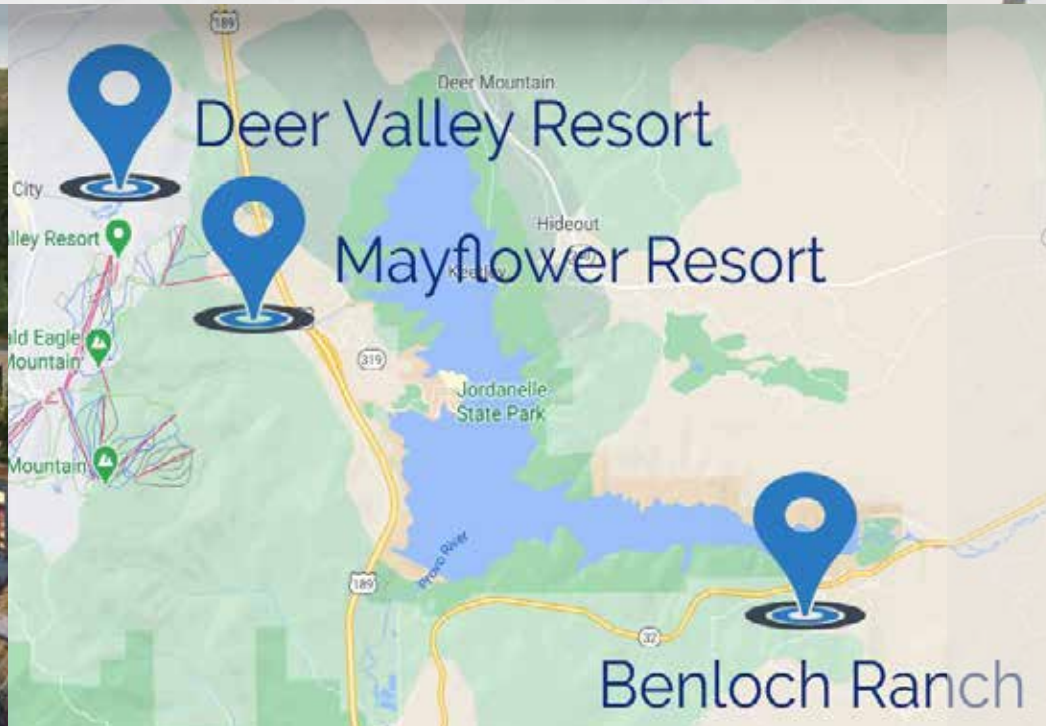
# WHERE **SUSTAINABLE BUILDING** IS SECOND NATURE

Our community's stewardship is critical to preserving the unique environment that we see everyday. Learn more about our conservation philosophy:

[LEARN MORE](#)



# READY FOR POWDERHOUNDS, STAYCATIONS, AND THE **NEW MAYFLOWER RESORT!**



Mayflower is North America's first world-class alpine village to be developed in the past 40 years



SUBSCRIBE SO YOU DON'T MISS OUT  
ON KEY MILESTONES!

Benloch Ranch is a phased development,  
and each phase will sell quickly!

**SUBSCRIBE NOW**



WE'VE SOLD HALF OF OUR PHASE 1 LOTS ALREADY.  
CONTACT US NOW TO **RESERVE YOUR LOT.**

CONTACT US







# SIGN UP FOR OUR **VIP LIST**

You'll be the first to know when Phase 2 lot reservations open.

[SIGN UP NOW](#)

**BR** BENLOCH  
RANCH

RESIDENTIAL LIVING,  
**REDEFINED.**