



**CitiusTech: Health
Plans & Payers**

Enabling health plans and payers to drive
clinical value chain excellence

Integration & Interoperability • Data Management • Performance Management
Predictive Analytics & Data Science • Digital Engagement



Health plans and payers today are faced with the challenge of driving innovation while meeting cost concerns

CitiusTech enables healthcare organizations to leverage emerging technologies and build enterprise solutions across the clinical value chain

CitiusTech's SCORE+ for HEDIS is an end-to-end suite for real-time HEDIS reporting, provider collaboration and accelerated gap-closure.

As a specialized HIT partner, CitiusTech helps CIOs leverage technology to drive value-based care

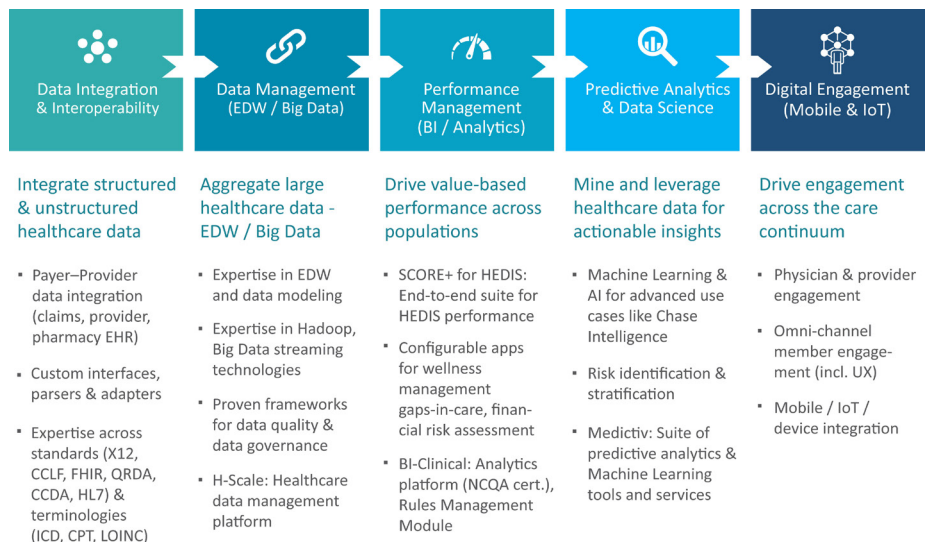
With rising costs of care and fast-changing regulatory mandates health plans need to invest in technology solutions that drive value-based care. They face multiple challenges around risk stratification, population health, accountable care and regulatory challenges like HEDIS® and STAR.

CitiusTech helps health plans and payers address multiple challenges across the clinical value chain

CitiusTech is well-positioned to help health plans drive clinical value chain excellence. CitiusTech offers a comprehensive suite of services, platforms and solutions across a wide range of payer needs. Its BI-Clinical platform for healthcare BI / analytics is NCQA certified for all HEDIS 2018 performance measures.

CitiusTech serves commercial and Blue Cross plans, ACOs, population health and wellness companies for:

- **Payment reforms:** P4P, ACO, bundled payments, etc.
- **Regulatory reporting:** NCQA HEDIS, CMS Stars or custom measures
- **Clinical integration:** Diverse formats such as HL7, CCDA, FHIR etc.
- **Provider / member engagement:** Portals and mobile apps
- **Core administrative systems:** Custom application development and integration with leading enterprise healthcare systems (EHR, Claims)



Driving Clinical Value Chain Excellence



CitiusTech: Healthcare Proficiencies	
Enterprise Applications	<ul style="list-style-type: none"> • Architecture, design, development, testing & deployment of enterprise applications • Cloud engineering, cloud migration (Lift & Shift), mobile / IoT, DevOps, security / HIPAA • Mature QA & test automation services, including new paradigms like in-sprint QA
Data Management	<ul style="list-style-type: none"> • Interoperability support for applications, new interfaces and specifications, deployment of EAI tools • EDW (on-premise / cloud) and data governance (EIM, EMPI, MDM) • Proven expertise around Big Data and data lake
Performance Management	<ul style="list-style-type: none"> • BI / analytics and custom reporting for clinical, financial, regulatory and operational performance • Strong capabilities across chart abstraction, medical record review, chase intelligence and gaps-in-care
Data Science & Consulting	<ul style="list-style-type: none"> • Data science consulting and services • Statistical mining, predictive modeling, Machine Learning, Deep Learning, model life cycle management and AI techniques
CitiusTech: Healthcare Technology Platforms	
SCORE+ for HEDIS®	<ul style="list-style-type: none"> • End-to-end solution to improve HEDIS scores, drive collaboration and accelerate gap-closure • Web and mobile based clinical data abstraction and chase intelligence capabilities • Real-time HEDIS processing
BI-Clinical	<ul style="list-style-type: none"> • NCQA 2018 Certified BI / analytics platform • 750+ clinical, financial, operational and regulatory KPIs - largest CQM library • Self-authoring Rules Management Module
H-Scale	<ul style="list-style-type: none"> • Healthcare data integration and management platform to accelerate MDM and automated analytics • Portable to any data platform, including Hadoop, NoSQL, MPP and RDBMS
Medictiv	<ul style="list-style-type: none"> • Suite of tools and services for predictive analytics, statistical modeling, AI and Machine Learning • Supported by strong team of data scientists and healthcare data modelers

Health Plans & Payers: Success Stories

Leading Blues plan: Strategic partnership around quality management, Big Data for clinical data integration and EDW needs. Implemented BI-Clinical for near real-time HEDIS measure calculation

Leading healthcare communications network for payers and providers: Long term partnership (90+ FTEs) across development, implementation, QA / testing, integration (EDI X12)

Leading care coordination services provider: Comprehensive QA and testing of products for Medicare population

Leading provider for healthcare cost management services: Platform enhancement for proprietary suite of claims repricing products

Global healthcare organization: Distributed agile / co-development model for clinical data integration. End-to-end monitoring and support for HIE platforms (1.5 & ODXI)

Benefits management and utilization management provider: Multi-year engagement, focused on specialized solutions - across sustained engineering, product engineering, data analytics and Big Data

* HEDIS is a registered trademark of the National Committee for Quality Assurance (NCQA).

About CitiusTech

CitiusTech is a specialist provider of healthcare technology services and solutions to healthcare technology companies, providers, payers and life sciences organizations. With over 2,900 professionals worldwide, CitiusTech enables healthcare organizations to drive *clinical value chain* - excellence, across integration & interoperability, data management (EDW, Big Data), performance management (BI / analytics), predictive analytics & data science and digital engagement (mobile, IoT). CitiusTech helps customers accelerate innovation in healthcare through specialized solutions, healthcare technology platforms, proficiencies and accelerators. With cutting-edge technology expertise, world-class service quality and a global resource base, CitiusTech consistently delivers best-in-class solutions and an unmatched cost advantage to healthcare organizations worldwide.

Princeton | Rochester | Dallas | London | Dubai | Mumbai | Bengaluru | Singapore