



BIC-RMM

Rules Management Module

BIC-RMM: First-of-its-kind Rules Management Module

With increasing focus on value-based care and measuring quality of care Meeting various analytics and quality reporting requirements of quality and population health programs is a top priority for healthcare organizations. However, managing the vast number of complex measures for diverse needs is becoming increasingly complex.

BIC-RMM is an award-winning* solution which simplifies and accelerates rule management by giving business users the ability to build, configure and operationalize CQMs, cohorts and alerts. The simplicity comes from an easy-to-use, do-it-yourself interface creating and managing rules. The speed comes from a powerful Rules Engine to process pre-built as well as custom measures / KPIs.

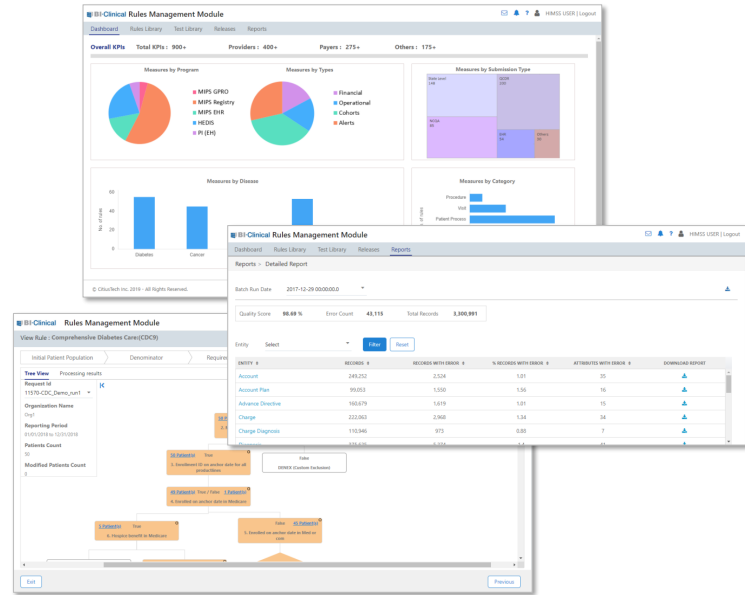
BIC-RMM is the first solution in the healthcare industry that enables definition and editing of complex healthcare rules, such as regulatory, contractual and operational rules, without any scripting / dependency on IT. It leverages BI-Clinical's high performance Rules Engine to process and deploy pre-built as well as custom measures and KPIs.

BIC-RMM: Highlights

- 60% improvement in process efficiency for quality measure management
- 40% faster go-live due to time saved in measure deployment and testing
- Decision tree (flowchart) interface build and manage complex measures and ad-hoc rules
- Largest library of pre-built KPIs with 700+ clinical, financial, operational and data quality rules
- Reusable and customizable rules and templates

BIC-RMM: Key Advantages

- Accelerate clinical, regulatory, contractual and operational reporting needs by reusing pre-built rules or implementing custom KPIs
- Improve measure correctness significantly with better version control and an automated process that reduces manual errors
- Create and reuse value sets, codes, conditions, rules, etc. – enabling faster and more accurate rule creation (<5 minutes to import / export value sets)
- Get a consolidated view of all change history, timestamps and associated users
- Centralize all rule definitions for a single version of business logic



About CitiusTech

CitiusTech is a specialist provider of healthcare technology services and solutions to healthcare technology companies, providers, payers and life sciences organizations. With over 4,000 professionals worldwide, CitiusTech enables healthcare organizations to drive clinical value chain excellence - across integration & interoperability, data management (EDW, Big Data), performance management (BI / analytics), predictive analytics & data science and digital engagement (mobile, IoT). CitiusTech helps customers accelerate innovation in healthcare through specialized solutions, platforms, proficiencies and accelerators. With cutting-edge technology, world-class service quality and a global resource base, CitiusTech consistently delivers best-in-class solutions and an unmatched cost advantage to healthcare organizations worldwide.

Princeton | New York | Rochester | Dallas | Boston | Philadelphia | Mumbai | Bengaluru | Chennai | Dubai | Singapore | London