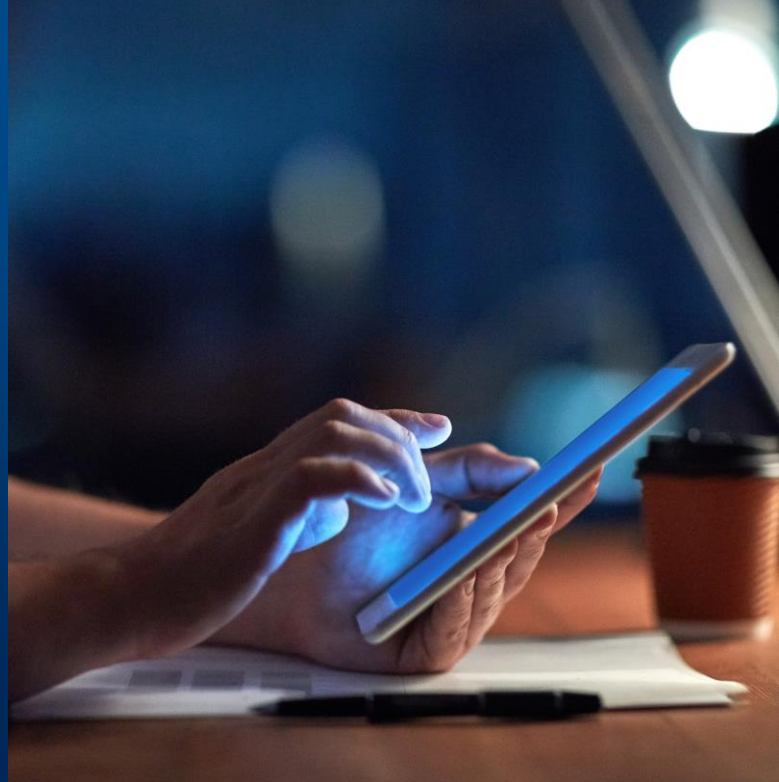


Powering the Future of Healthcare ▶

FAST+

Industry-leading platform to
accelerate FHIR® deployment and
comply with CMS interoperability
regulations



FAST+ is an end-to-end solution for CMS Interoperability Rule compliance with modular features for enterprise-wide FHIR enablement

Backed by CitiusTech's strong interoperability practice of 300+ HL7 & FHIR certified professionals.

Flexible implementation support both on-cloud and on-premise

Pre-built features to connect disparate systems, standardize data, enable real-time data access

FAST+: FHIR Enablement & CMS Compliance

CitiusTech's **FAST+** is an industry leading solution to accelerate your FHIR strategy. With flexible implementation support across cloud & on-premise, FAST+ helps you drive FHIR adoption, leverage FHIR to enable digital strategies and accelerate CMS Interoperability rule compliance. It is an end-to-end FHIR implementation suite that offers modular products, accelerators and FHIR consulting services.

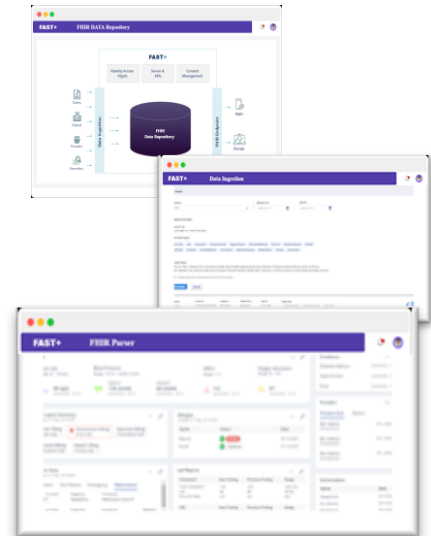
Simplify Data Exchange & Compliance

Out-of-the-box functional modules to support compliance requirements - patient access, third-party app access, OAuth2 authentication, member consent mgt, provider directory, payer-to-payer data exchange and security labeling.

Accelerate Digital Transformational

Enhanced modules like:

- FAST+ NLP integration pipeline
- SMART on FHIR for provider and member engagement
- Seamless integration with leading technology platforms and consumer devices
- Bi-directional data exchange with EHR integration and subscription (API integration)

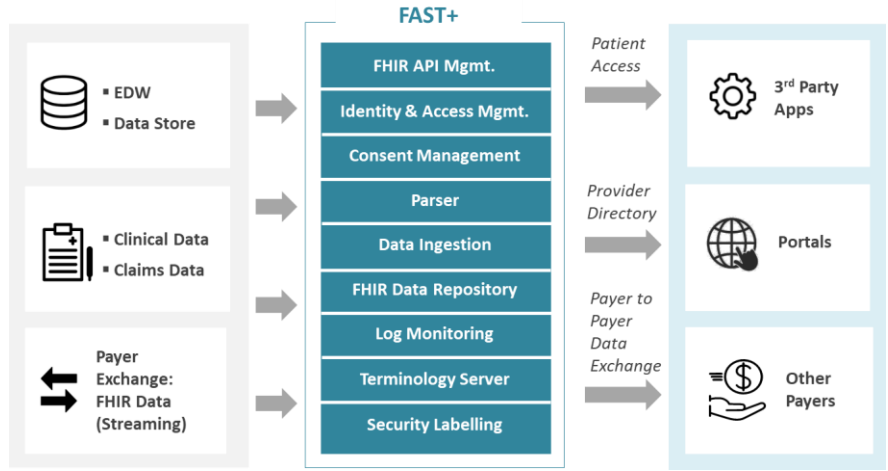


ONC Compliant
Interoperability
Solution

Secure and
validated endpoints
as per CAQH

Plug-ins & direction guide
for enabling 3rd party
mobile applications

FAST+: Key Solution Components



FAST+ has pre-built modules to accelerate implementation, Identity Access Management & Consent Management ensuring secured access of data.

Key use cases include FHIR analytics, Data Science / NLP use cases, SMART on FHIR apps for provider and payer engagement.

| | |
|------------------------------------|---|
| Server & API | Prebuilt HIPAA compliant FHIR Server and readily consumable FHIR APIs as mandated by CMS |
| Identity & Access Mgmt. | Single sign-on along with standard security protocols and support for fine-grained authorization policies |
| Consent Management | Compliant with Privacy Consent Directive using Consent FHIR Resource |
| Security Labelling | Integrating security labels to all the FHIR resources mandated as per CMS |
| Log Monitoring | Aggregate logs, identify anomalies and raise notifications and alerts |

| | |
|-----------------------------|--|
| Parsers | Pre-Built independent FHIR parser, bundled with parsing configuration for 20 FHIR resources |
| Data Ingestion | Creating and managing rules across data quality, data aggregates, data transformation, and data reconciliation |
| FHIR Data Repository | Built around HL7 FHIR std. with the ability to host data both on-premise and Cloud |
| Terminology Server | Third Party Integration for enabling Terminology Server Concepts |
| All Enablement | NLP Integration and support for both structured and Unstructured FHIR APIs |



About CitiusTech

CitiusTech (www.citiustech.com) is a leading provider of healthcare technology services, solutions and platforms to over 130 organizations across the payer, provider, medical technology and life sciences markets. With over 5,000 technology professionals worldwide, CitiusTech powers healthcare digital transformation through next-generation technologies, solutions and accelerators. Key focus areas include healthcare interoperability & data management, quality & performance analytics, value-based care, omni-channel member experience, connected health, virtual care coordination & delivery, personalized medicine and population health management. CitiusTech has two subsidiaries, FluidEdge Consulting (www.fluidedgeconsulting.com) and SDLC Partners (www.sdlcpartners.com), with deep expertise in healthcare consulting and payer technologies, respectively. CitiusTech's cutting-edge technology expertise, deep healthcare domain expertise and a strong focus on digital transformation enables healthcare organizations to reinvent themselves to deliver better outcomes, accelerate growth, drive efficiencies, and ultimately make a meaningful impact to patients..

Princeton | Rochester | Dallas | Boston | Philadelphia | Pittsburgh | Clarksville | Ontario | Mumbai | Airoli |
Pune | Bengaluru | Chennai | Hyderabad | Gurgaon | London | Dubai | Singapore

www.citiustech.com

