

Powering the Future of Healthcare ▶

BI-Clinical

Healthcare BI & analytics platform: Empowering quality teams to accelerate compliance and enhance quality measures



healthcare
innovation
INNOVATOR AWARDS

 **CitiusTech**

5,000+

Deployments across
healthcare organizations

550,000+

Providers & caregivers
tracked

40M+

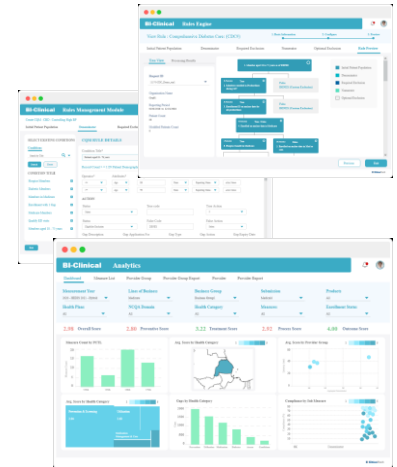
Lives impacted through
better BI & analytics

BI-Clinical: Comprehensive Platform for Healthcare BI/Analytics & Regulatory Data Submission

BI-Clinical™ is the world's leading healthcare BI and analytics platform with an extensive range of configurable apps that cover over 750+ KPIs - the largest measure library in the industry. It offers an integrated, sustainable and scalable approach to analytics and reporting, to effectively meet value-based care needs

BI-Clinical is used by large health systems as well as leading health plans to drive value-based initiatives, monitor patient and member populations and proactively close gaps-in-care. The high-performance rules engine enables organizations to configure and deploy custom quality measures based on their business needs and is scalable to process up to 100 million patient records.

The platform is powered by state-of-the-art modules to drive quality compliance, facilitate self-service, identify areas of improvement and enable proactive oversight to safeguard revenues and avoid penalties.



750+
pre-built
KPIs & quality
measures

SaaS
deployment
options



QCQR
Certified
Submission
Vendor 2018



BI-Clinical: Key Modules

BIC-Rules Engine

Fastest rules-engine in the healthcare industry

- Run at the speed-of-business (real-time, daily or even ad-hoc runs)
- Compute performance measures across domains
- Get certified for both provider and payer measures

BIC-RMM

Rules Management Module for self-creation and mgmt. of rules

- Choose from a library of 750+ pre-built measures across multiple domains
- 60% improvement in process efficiency for quality measure management
- 40% faster go-lives due to time saved in measure deployment and testing

BIC-Audit 360

Real-time audit and traceability of measures, cohorts and rules

- Get a Single Source of Truth across all CQM and CDS rules
- Achieve complete traceability by provider, measure and regulation
- Get complete support for CMS / NCQA audits

BIC- Compare

Comparison of measure outputs across historic runs

- Minimal or zero dependence on clinical experts, IT teams or external IT vendors
 - Rich, persona-driven visualizations and transparent view of underlying issues
 - Holistic view as well as granular-level comparisons
-



Success Stories

Large regional health system: BI-Clinical for comprehensive analytics and data submission. 52% improvement in performance scores and 70% rise in physician compliance.

Leader in renal care services: Advanced analytics using BI-Clinical for clinical performance and real-time clinical decision support. Covered 550,000+ lives and 8M visits annually.

Leading state HIE: BI-Clinical to create disease registries, identify at-risk populations and build integrated analytics. Tracked 180+ quality measures, covering 1M+ lives with 12M+ visits annually.

Major health plan: BI-Clinical to improve utilization and population health processes, to meet HEDIS and Star requirements.



About CitiusTech

CitiusTech (www.citiustech.com) is a leading provider of healthcare technology services, solutions and platforms to over 130 organizations across the payer, provider, medical technology and life sciences markets. With over 5,000 technology professionals worldwide, CitiusTech powers healthcare digital transformation through next-generation technologies, solutions and accelerators. Key focus areas include healthcare interoperability & data management, quality & performance analytics, value-based care, omni-channel member experience, connected health, virtual care coordination & delivery, personalized medicine and population health management. CitiusTech has two subsidiaries, FluidEdge Consulting (www.fluidedgeconsulting.com) and SDLC Partners (www.sdlcpartners.com), with deep expertise in healthcare consulting and payer technologies, respectively. CitiusTech's cutting-edge technology expertise, deep healthcare domain expertise and a strong focus on digital transformation enables healthcare organizations to reinvent themselves to deliver better outcomes, accelerate growth, drive efficiencies, and ultimately make a meaningful impact to patients..

Princeton | Rochester | Dallas | Boston | Philadelphia | Pittsburgh | Clarksville | Ontario | Mumbai | Airoli |
Pune | Bengaluru | Chennai | Hyderabad | Gurgaon | London | Dubai | Singapore

www.citiustech.com

