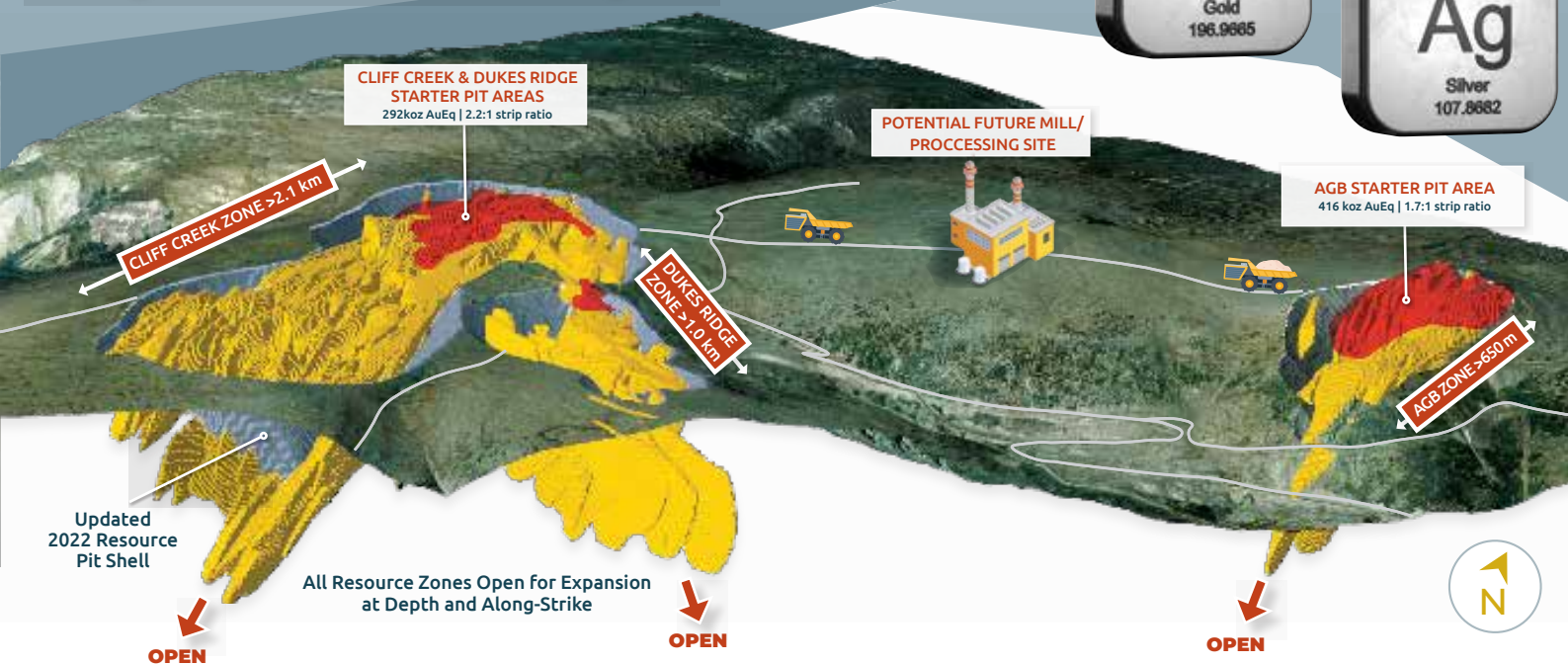
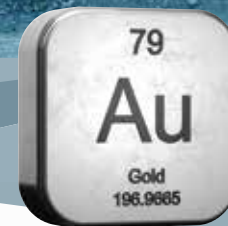


**BENCHMARK
METALS**

**TSX-V: BNCH
OTCQX:BNCHF
WKN: A2JM2X
benchmarkmetals.com
+1.604.773.1567**

CANADA'S NEXT DEVELOPMENT STORY

Lawyers Gold Silver Project



- 2022 Mineral Resource
- US \$1,700 per gold ounce pit shell
- Higher grade near-surface material for indicative starter pits

SHARE STRUCTURE May 07, 2022

SHARES OUTSTANDING

206.9M

WORKING CAPITAL

\$16.2M

WARRANTS

1.9M

Near term warrants
(issued at \$1.00)

IN THE MONEY
OPTIONS

8.2M

If exercised would generate \$2.3M

INDICATED MINERAL RESOURCES¹

	Tonnes k (000s)	Au g/t	Ag g/t	AuEq g/t	Au k oz	Ag M oz	AuEq k oz
Indicated Pit (0.4 g/t AuEq cut-off)	65,807	1.22	23.45	1.40	2,587	49.6	2,964
Indicated UG (1.5 g/t AuEq cut-off)	1,569	3.00	66.65	3.54	150	3.2	177
Total Indicated	67,376	1.26	24.39	1.45	2,738	52.9	3,141

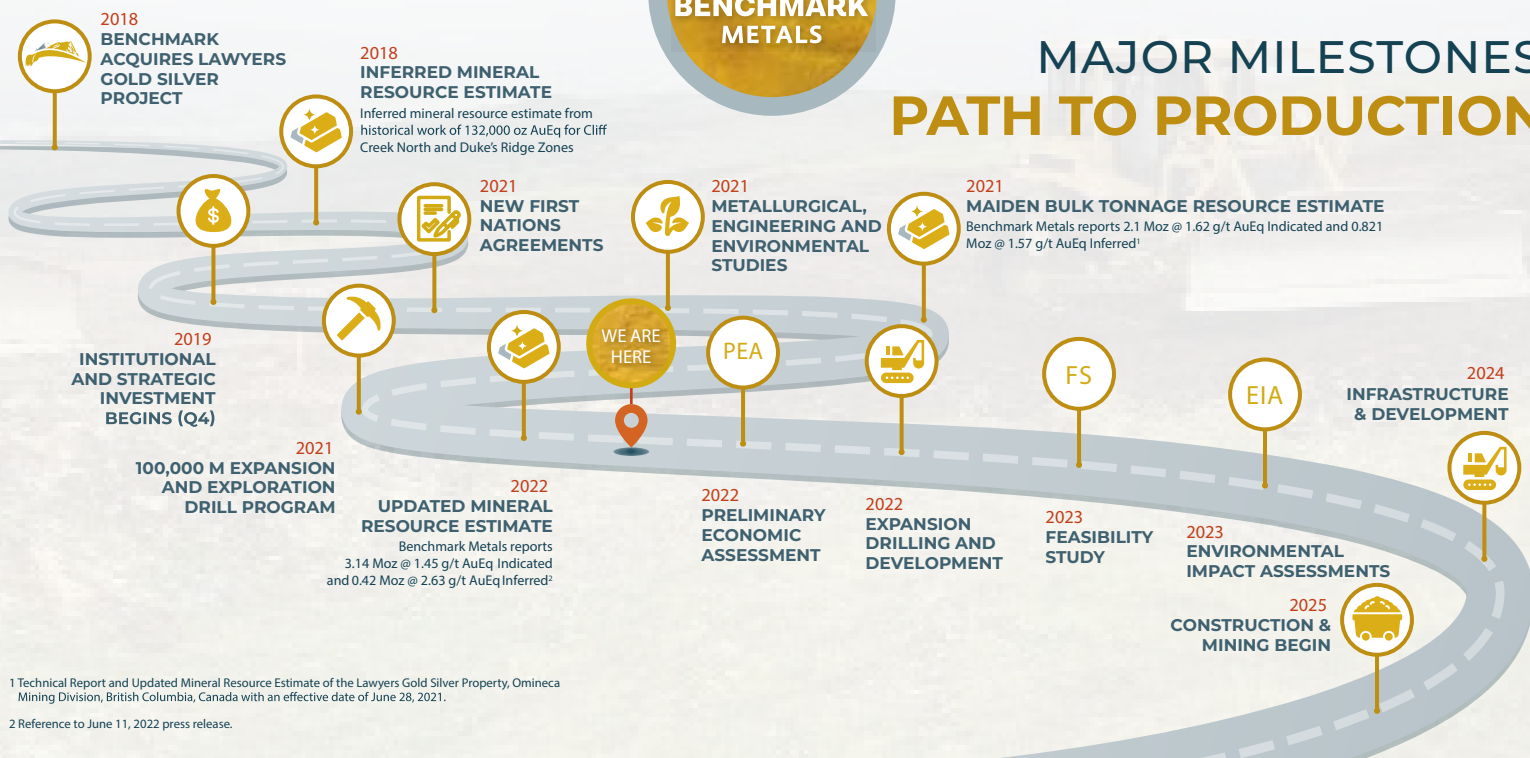
INFERRED MINERAL RESOURCES¹

	Tonnes k (000s)	Au g/t	Ag g/t	AuEq g/t	Au k oz	Ag M oz	AuEq k oz
Inferred Pit (0.4 g/t AuEq cut-off)	2,265	1.00	13.92	1.07	73	1.0	78
Inferred UG (1.5 g/t AuEq cut-off)	2,608	3.66	62.80	4.06	305	5.2	337
Total Inferred	4,873	2.39	39.41	2.63	378	6.2	415



BENCHMARK METALS

MAJOR MILESTONES PATH TO PRODUCTION



¹ Technical Report and Updated Mineral Resource Estimate of the Lawyers Gold Silver Property, Omineca Mining Division, British Columbia, Canada with an effective date of June 28, 2021.

² Reference to June 11, 2022 press release.

MANAGEMENT & DIRECTORS

JOHN WILLIAMSON, P.Geol
CEO & Chairman

+30 years mining sector,
founder of more than 20
successful companies in
Canada and around the globe

JIM GREIG, MBA
President & Director

+25 years mining sector,
formerly Keegan Resources Ltd,
exploration to production
expertise

IAN HARRIS, P.ENG.
Vice President Engineering

+20 years mining sector,
leading worldwide mining
projects from development
to production

SEAN MAGER
CFO & Director

+25 years mining sector,
former CFO & COO at Brilliant
Resources Ltd., regulatory &
financial expertise

**MICHAEL DUFRESNE, M.SC.,
P.GEOL., P.GEO.**
Director & Qualified Person

+30 years mining sector,
professional geologist at
world-class mining projects
and jurisdictions

TOBY PIERCE, MBA
Director

+25 years senior executive
with public resource
companies, former Banker
at GMP Securities London

JEREMY YASENIUK
Corporate Development

+20 years in financial markets,
Director at Altiplano Metals Inc.,
marketing & financial expertise

MALCOLM DORSEY M.SC.
Senior Geologist

Exploration structural geologist
with a comprehensive field and
technical background. Currently
CEO of Torr Metals Inc.

ENVIRONMENT, SOCIAL, AND GOVERNANCE

TĀLTĀN
TAHLTAN CENTRAL
GOVERNMENT

TAKLA
NATION



TSAY KEH DENE



Kwadacha
Nation

PARTNER NATION AGREEMENTS

- Active participation with First Nations in project development consultation and feedback along the mine permitting path
- Providing employment, training, and contracting opportunities to our First Nations partners

ENVIRONMENTAL MONITORING

- Wildlife monitoring and mitigation program
- Environmental Impact studies
- Pre-disturbance environmental surveys
- Reclamation success monitoring

ENVIRONMENTAL BASELINE STUDIES

- Working closely with First Nations partners in baseline program scoping and implementation
- Establishing aquatic, terrestrial, and environmental baselines to support entry into the provincial and federal environmental assessment process