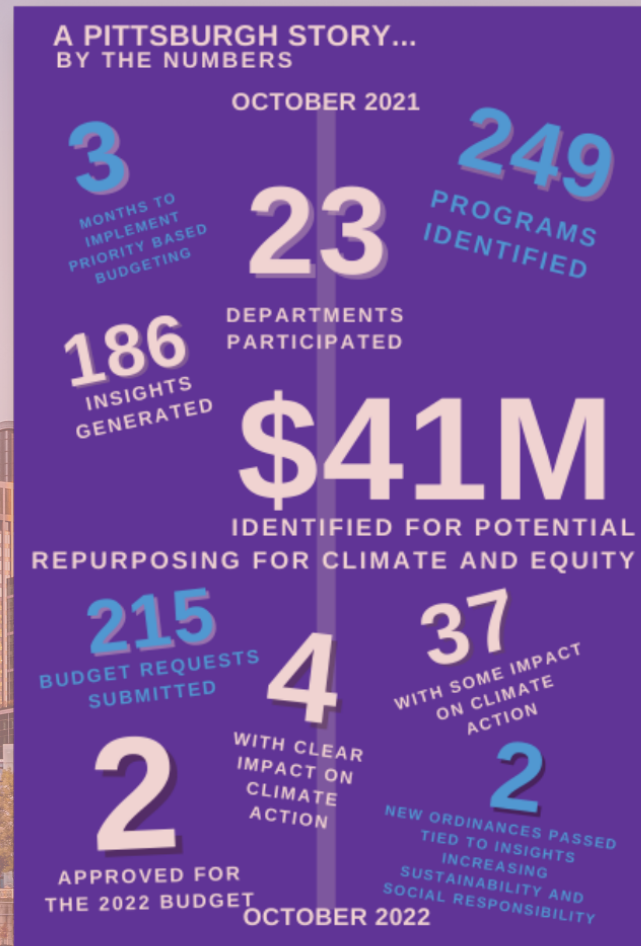


UTILIZE PBB BLUEPRINT TO OPTIMIZE AND MAXIMIZE RESOURCES



PITTSBURGH, PA

IMPLEMENTED PBB IN 2020
POPULATION OF 302,200



The City of Pittsburgh excelled in 2020-2021 in setting and pursuing budgetary goals related to climate action and equity. The city launched PBB, fully implemented PBB, and took action on its program data in a three-month period. In that time frame, the city identified 186 program insights with \$41 million in potential resource repurposing opportunities and entrepreneurial revenue-generating opportunities toward their climate and equity objectives.

The 186 program ideas didn't just come from upper management. These are people out in the field, who know the departments quite well, and they're coming up with these unbelievable ideas that we can weigh out what's feasible right now and what is feasible long term.

Kevin Pawlos
Director, Office of Management and Budget


2021

THE POWER OR SHARED PURPOSE



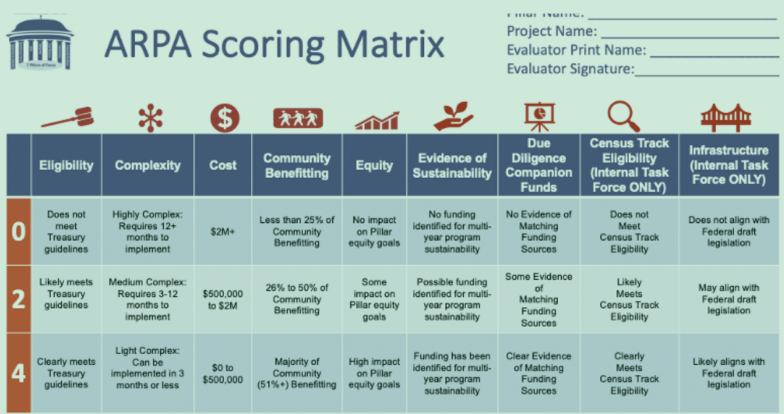
PUEBLO, CO

IMPLEMENTED PBB IN 2021
POPULATION OF 110,800



Customize the Tools to Fit Your Needs
What do you want to know about each proposal?

- Treasury Guidance Category?
- Level of Complexity?
- Impact on Equity?
- Impact on Small Business?
- Timeline to Implement?
- Infrastructure Improvement Impact?



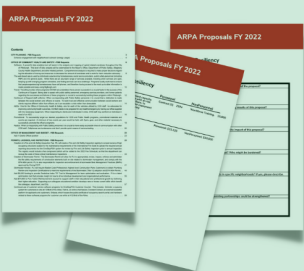
ARPA Scoring Matrix

	Eligibility	Complexity	Cost	Community Benefiting	Equity	Evidence of Sustainability	Due Diligence Companion Funds	Census Tract Eligibility (Internal Task Force ONLY)	Infrastructure (Internal Task Force ONLY)
0	Does not meet Treasury guidelines	Highly Complex: Requires 12+ months to implement	\$2M+	Less than 25% of Community Benefiting	No impact on Pillar equity goals	No funding identified for multi-year program sustainability	No Evidence of Matching Funding Sources	Does not Meet Census Tract Eligibility	Does not align with Federal draft legislation
2	Likely meets Treasury guidelines	Medium Complex: Requires 3-12 months to implement	\$500,000 to \$2M	26% to 50% of Community Benefiting	Some impact on Pillar equity goals	Possible funding identified for multi-year program sustainability	Some Evidence of Matching Funding Sources	Likely Meets Census Tract Eligibility	May align with Federal draft legislation
4	Clearly meets Treasury guidelines	Light Complex: Can be implemented in 3 months or less	\$0 to \$500,000	Majority of Community (51%+) Benefiting	High impact on Pillar equity goals	Funding has been identified for multi-year program sustainability	Clear Evidence of Matching Funding Sources	Clearly Meets Census Tract Eligibility	Likely aligns with Federal draft legislation


Create an Evaluation Process
A repeatable process increases the transparency of and trust in the decision-making process. Citizens, staff, and leaders have a dependable format to reference.

Develop Narrative Rich Proposals
Building a fully customizable framework for proposals based on years of PBB data and best practices ensures data-rich, easy-to-evaluate proposals specific to your community.

Apply an Industry Trusted Scoring Rubric
The PBB scoring methodology is a recognized best practice by GFOA and ICMA and has been applied to the ARPA toolset to serve organizations in proposal prioritization.



THE CITY OF PUEBLO, COLORADO



The City of Pueblo excelled in 2020-2021 by establishing a partnership with Pueblo County to create the \$1 Million Reading Challenge. This partnership utilizes ARPA funds to incentivize youth to “catch up” from learning time lost during COVID. Bringing ARPA resources together from both the city and the county also brings together the knowledge and manpower from both organizations to serve the community in the best way possible.

We needed a methodology to prioritize and be compliant. In working with ResourceX, we said, What do we really need to do? This has been an incredible tool. It has been standardized and easy to refer back to. It is a community-driven ARPA process to meet the needs of the recovery from COVID.

Laura Solano
Chief of Staff

2021