

# Next-Generation Cloud Applications:

## Grid based EV rates



Driving electric  
has never been easier.



**James McCloskey, EV Analytics Project Manager**  
**Rick Mukherjee, Solutions Architect**

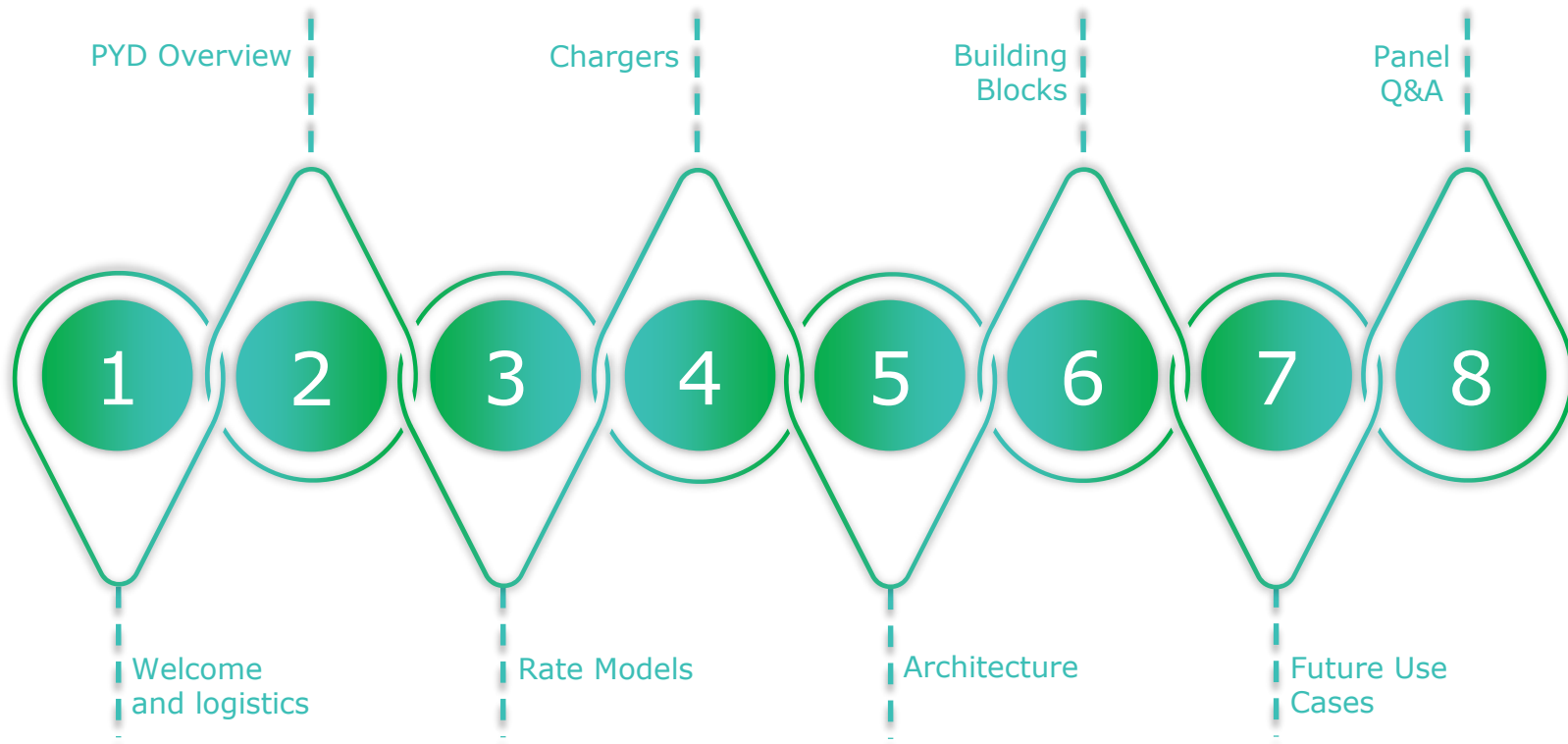
## Safety Message

Welcome, and thank  
you for joining us!

IT'S  N



# Agenda





**Power Your Drive  
Overview**

IT'S  N.

# Power Your Drive Overview

Installed, owned, operated, maintained, and billed by SDG&E, at no additional cost to the site host

## EV Chargers



## Building Types

254 businesses, condos, and apartments with 39% of sites in multi-unit dwellings

3,040 electric vehicle charging nozzles; 33% no cost chargers in disadvantaged communities

## Charging Made Easy



## Reducing Grid Impact

An hourly rate encourages EV charging during the cheapest off-peak times

78% of the energy delivered through the program comes from renewable resources

## Clean Energy



# Power Your Drive Overview

989 MT of GHG emissions reduced, equivalent to 33,823 trees

Average rate of 21¢ / kWh compared to residential average rate of 27 ¢ / kWh<sup>2</sup>

Eliminated ~350,000 Gallons of Gasoline

8,679,281 Electric Vehicle Miles Enabled

Customers saved over \$500,000 in fuel costs

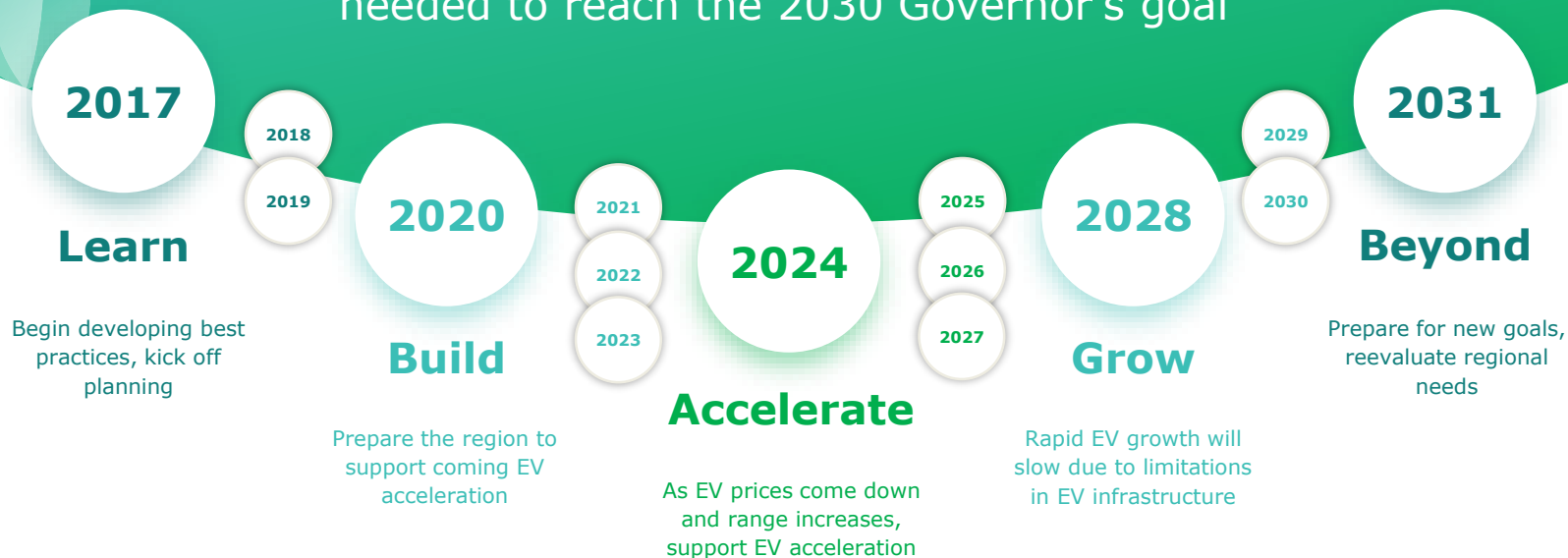
1,829 drivers influenced to purchase or lease an EV because of Power Your Drive<sup>1</sup>

86% of kWh usage during Off-Peak and Super Off-Peak hours, 73% renewable



# Power Your Drive Overview

Forecasted trends in electric vehicle sales and infrastructure needed to reach the 2030 Governor's goal

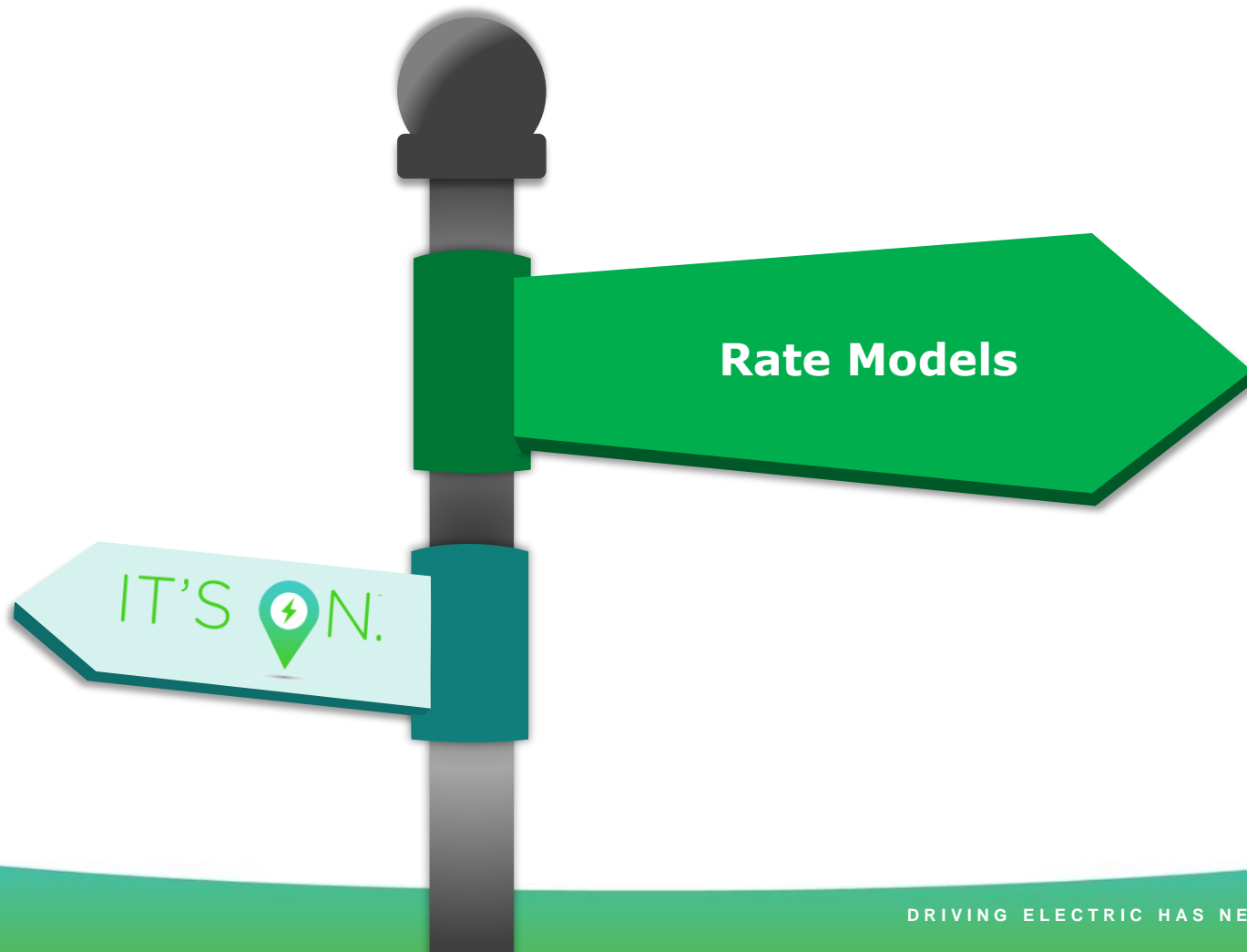


## Power Your Drive Award

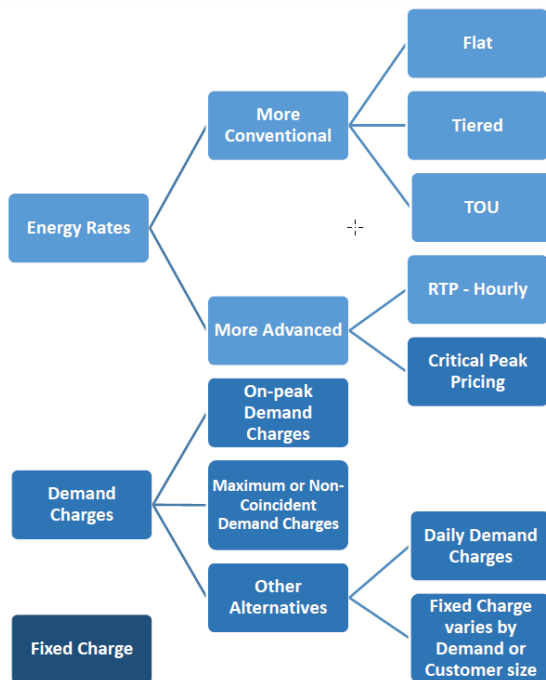
SDG&E has won  
the 2020 title of  
"Investor-Owned  
Utility of the Year"  
for our work on  
Power Your Drive





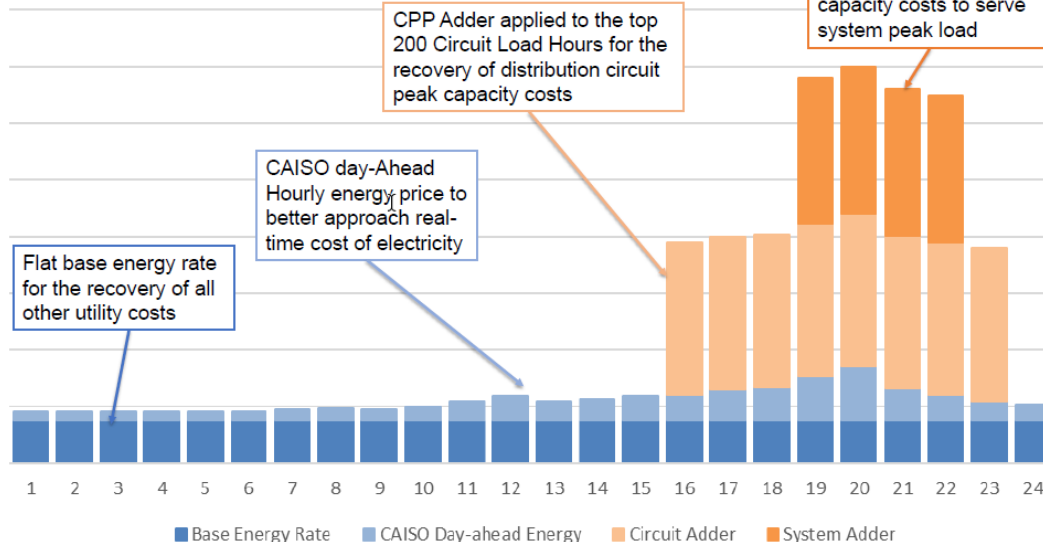


# Next-Generation Cloud Applications: Grid based EV rates



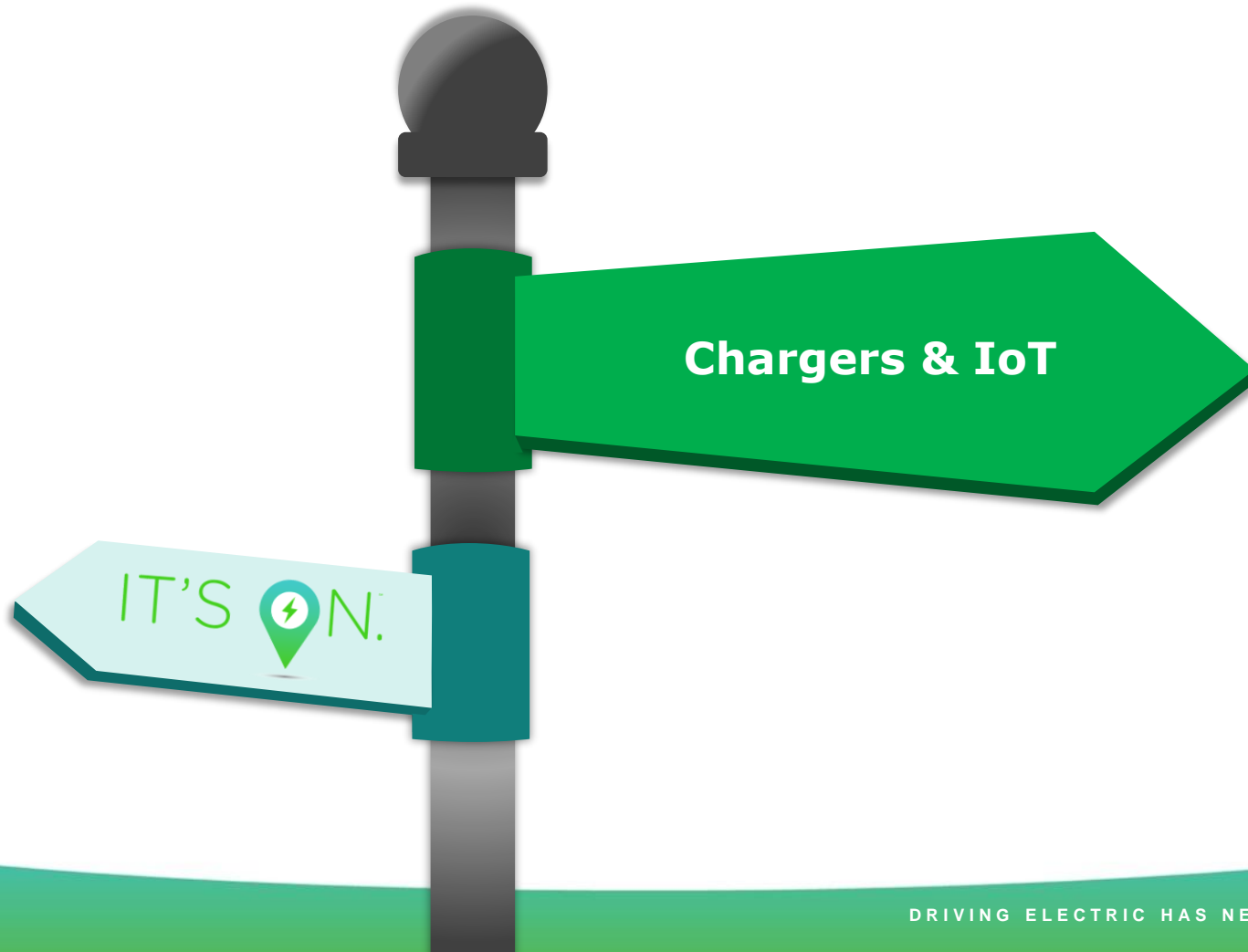
Advanced technologies partnered with more complex and granular rate design can create more opportunities for low cost hours

Illustrative Hourly Dynamic Rate



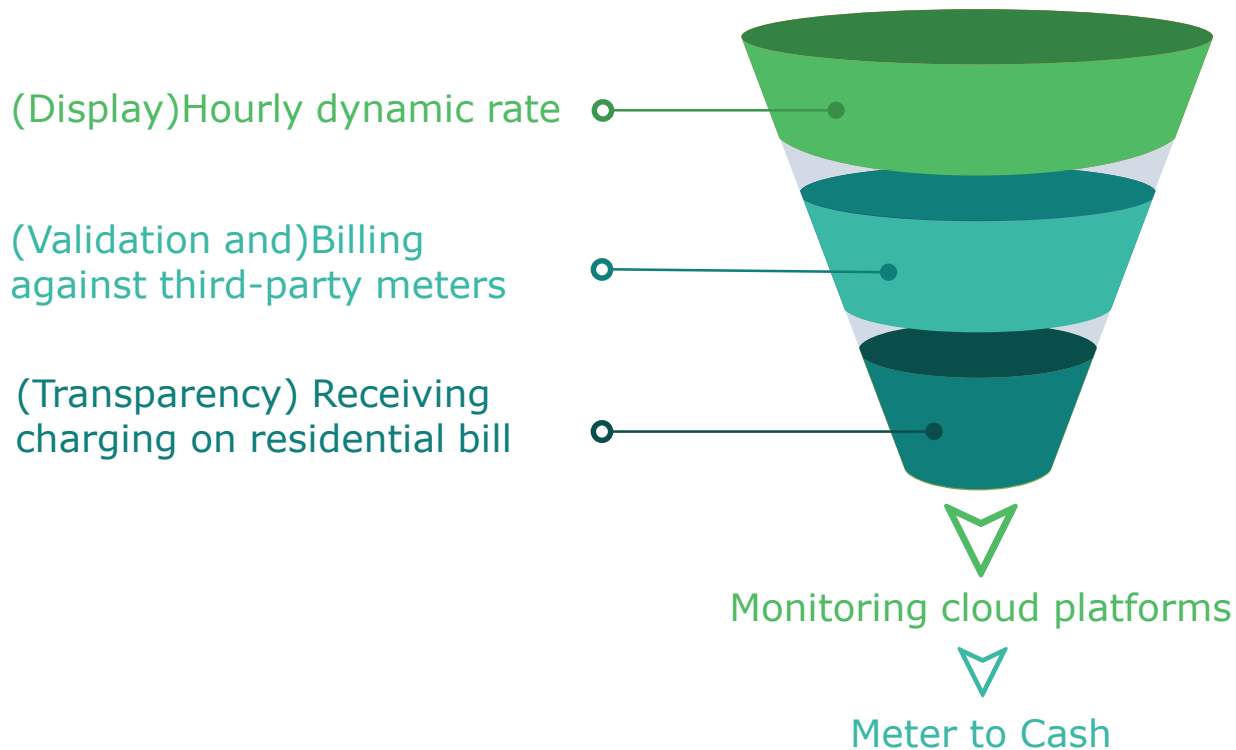
**CPP** is an energy rate option that provides a “capacity” price signal

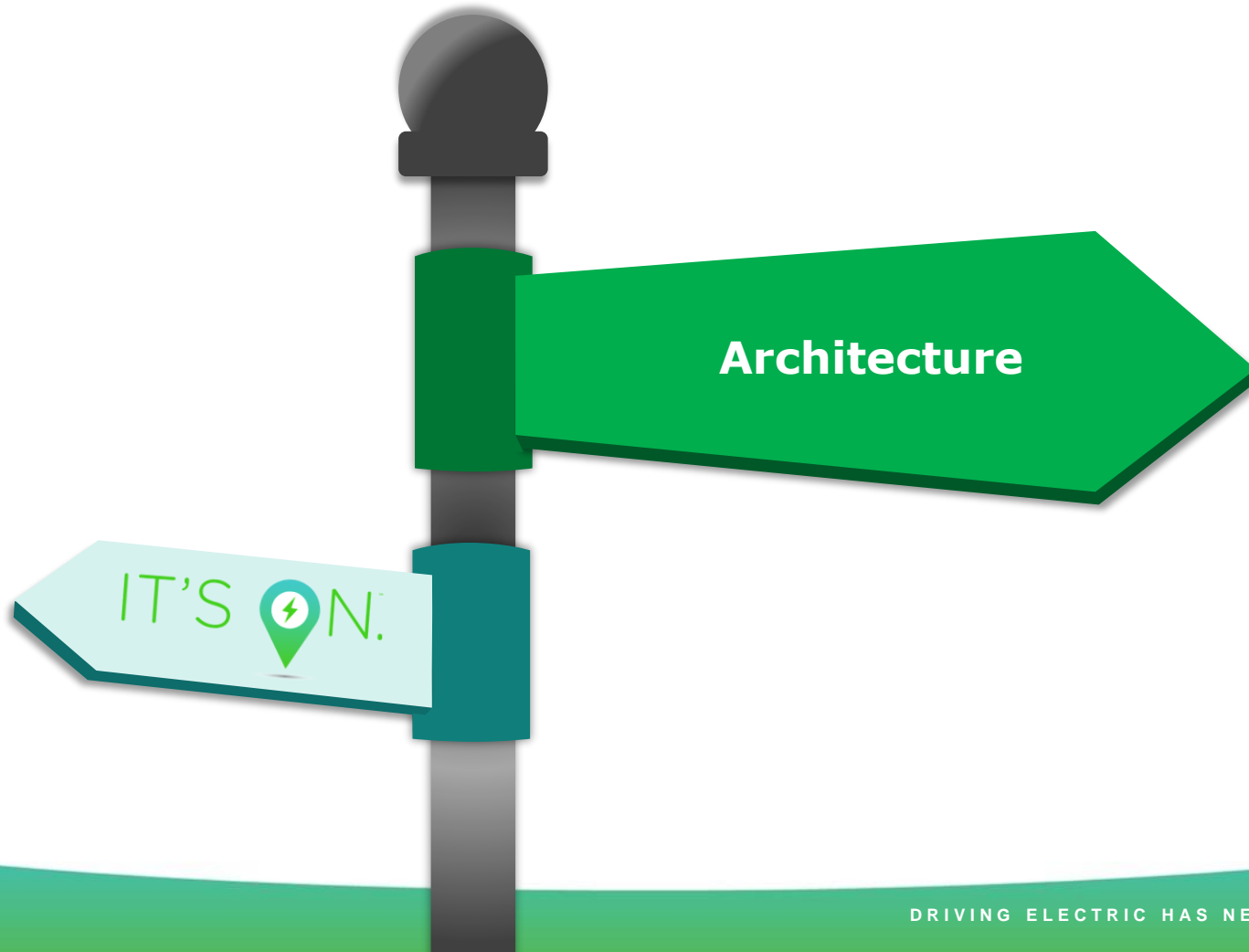
**Circuit-level CPP** provides a locational price signal while preserving customer equity by still charging all customers the same price



# Next-Generation Cloud Applications: Grid-Based EV Rates

## Rate Models







## Simplified View – Building Blocks

On-Premise  
services

API Gateway

Cloud based  
services

} Hybrid Cloud  
Model

Digital  
services

Asset (/MD)  
Management

Centralized  
Monitoring

Network  
Management

GIS, Map  
overlays

Calculation  
Engine

Validation  
Estimation  
Editing (VEE)

Charger  
Interrogation

Customer  
Engagement

Billing,  
Invoicing

CIS, CRM,  
Enrollment

Meter  
Interrogation

# Charging Reference Architecture

## Value, Integration, & Physical Layers

### Value Added Services Layer

Pricing Services

Parking Charges

Fleet Services

Billing Services

Network  
Management

Authentication  
Services

### Integration Services Layer

Open Charge  
Point Protocol

Vendor Proprietary  
Interfaces

Advanced Meter  
Infrastructure

Reliability

Site and Facility  
Metadata

### Physical Layer

Charger  
[Nozzle]

Smart Meter  
Electrical Meter

Communication Modules  
(WiFi, Bluetooth, RF Gateways)

Range Extender



**Q&A/Discussion**  
Thank you for your time.

IT'S  N.

