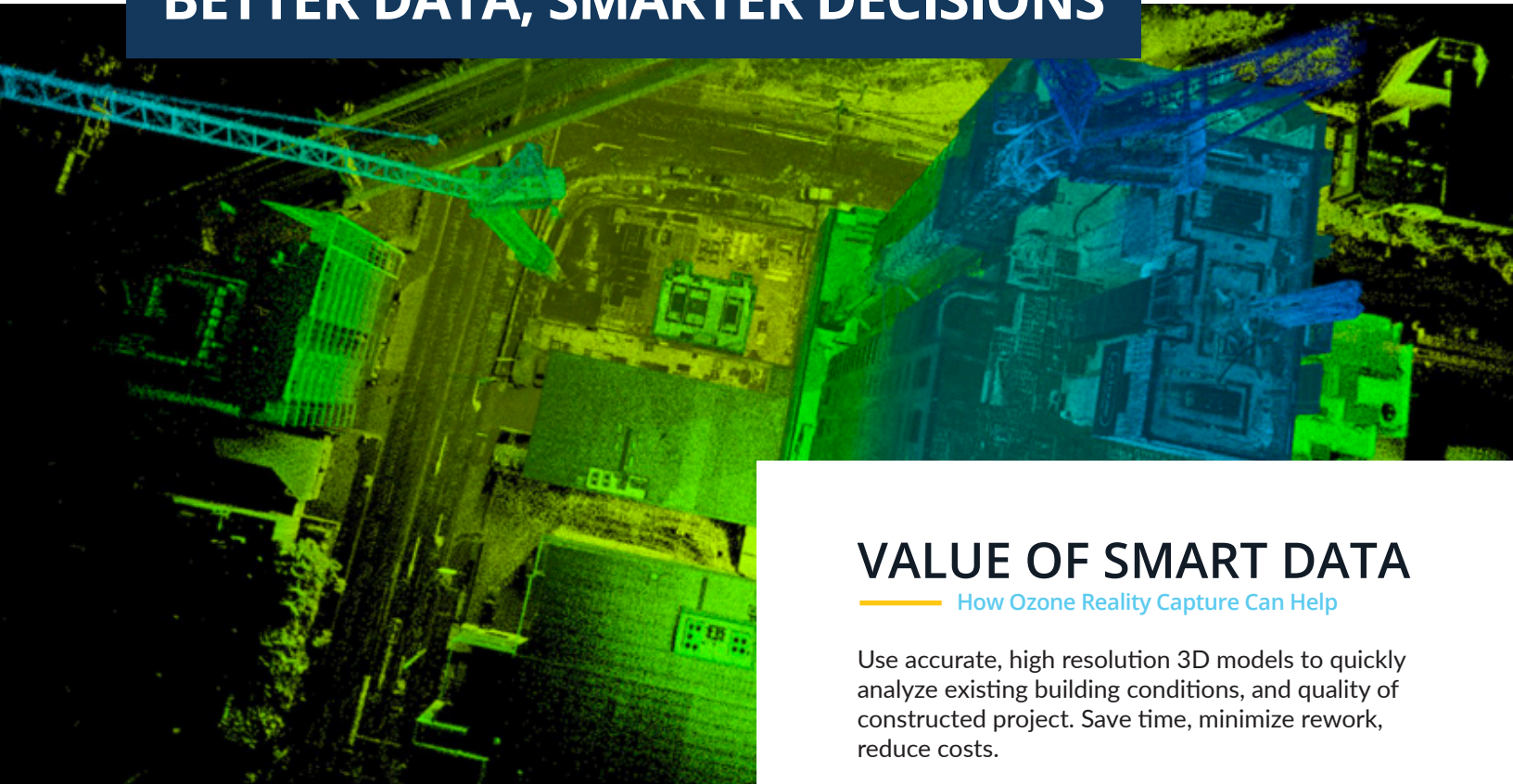


3D SCANNING



BETTER DATA, SMARTER DECISIONS



OZONE REALITY CAPTURE

Using the latest innovative drone and scanning technologies, Ozone Reality Capture provides powerful data that reduces costs, accelerates delivery and enables collaboration throughout the project lifecycle. Professional quality maps and 3D models empower you to instantly calculate data, track progress and monitor safety. We partner with pioneers in the industry to continually evolve and improve our services, so your business stays ahead of the competition.

Office: (949) 436-5193

Email: info@ozoneamp.com

Website: ozoneamp.com

VALUE OF SMART DATA

How Ozone Reality Capture Can Help

Use accurate, high resolution 3D models to quickly analyze existing building conditions, and quality of constructed project. Save time, minimize rework, reduce costs.



ARCHITECTURE, ENGINEERING & CONSTRUCTION

- Create as-builts for BIM modeling/ inspections
- Concrete floor flatness & level: FF/FL (ACI 117), 'heat map'
- Wall plumbness measurements
- In-wall MEP and above ceiling HVAC for facilities management
- Final scan/imagery for closeout documentation



ENERGY, UTILITIES, & CIVIL ENGINEERING

- Vegetation risk assessments (California fires)
- Pole lean
- Line sag (catenary)
- Refinery and pipeline inspections
- Dam inspections & monitoring