

Decision Doc User Guide

2022

Table of Contents

Page 2: Getting Started

Page 3: The questionnaire (where you share upcoming health care usage)

Page 4: HSA/FSA Guidance

Page 5-6: Reading Your Results

Page 7: Dental / Vision Guidance

Pages 8: Support

- 1 Click on your company's unique link to go to Decision Doc, a secure online platform that will help you choose your health plan.

You will receive your secure link through emails from your HR team, a link on your enrollment site, as well as flyers with a QR code.

You can access Decision Doc on any device!

- 2 Share a little about yourself so we can pull up plan information specific to you.

If you don't have a work email, enter your personal email here.

Hi, I'm Decision Doc!

I'm going to help you choose a health plan that saves you the most money based on your household's specific medical needs.

Here are a few cool things about me.

Confidential

Your information is entirely confidential. I won't share it with your employer or health insurance carrier.

All About Savings

I'll show you which health plan is the best match for your medical needs—so your health and wallet are covered.

Quick & Easy

I'll protect your time! Spend a few painless minutes with me and get back the hours you spend worrying about your health and budget.

Continue

Okay, your turn. Tell me a little bit about you.

First Name

Last Name

Date of Birth

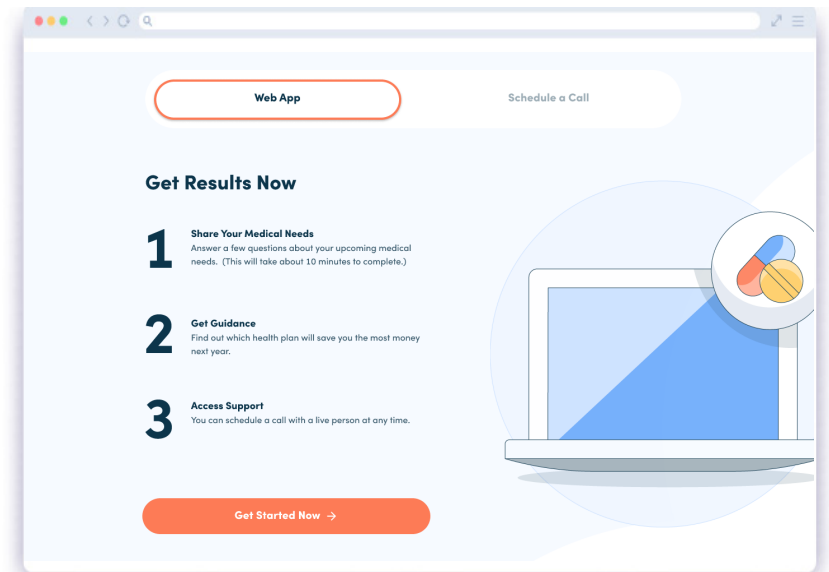
Work Email

Back **Continue**

worry, your nation is private won't be shared.

1 Choose whether you would like to answer questions about your upcoming healthcare usage online or over the phone.

Questions take 5-6 minutes online. If you choose the phone option, our analysts will call you directly.

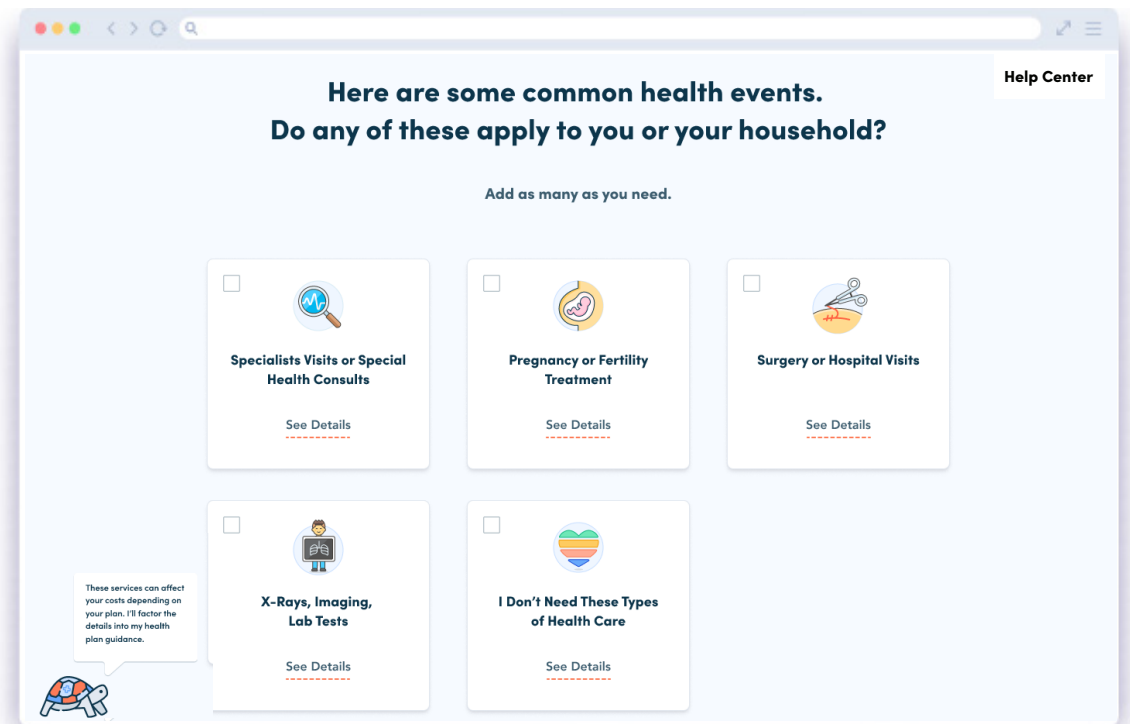


2 Share your expected health care usage.

We'll ask about major health events, like surgeries and specialists, and routine care, like your prescriptions and PCP visits. We'll also ask if you want guidance on your dental and vision plans.

Questions if you stay online?

- Click "Help Center" to email support or schedule a call with an analyst.
- Don't know a term? Click on the "glossary" button.
- **Theo the turtle** has helpful hints and resources.



When you finish the questionnaire, you can easily add and drop services and see how this will affect your over all costs. Easily compare different scenarios so you feel confident in your plan choice!

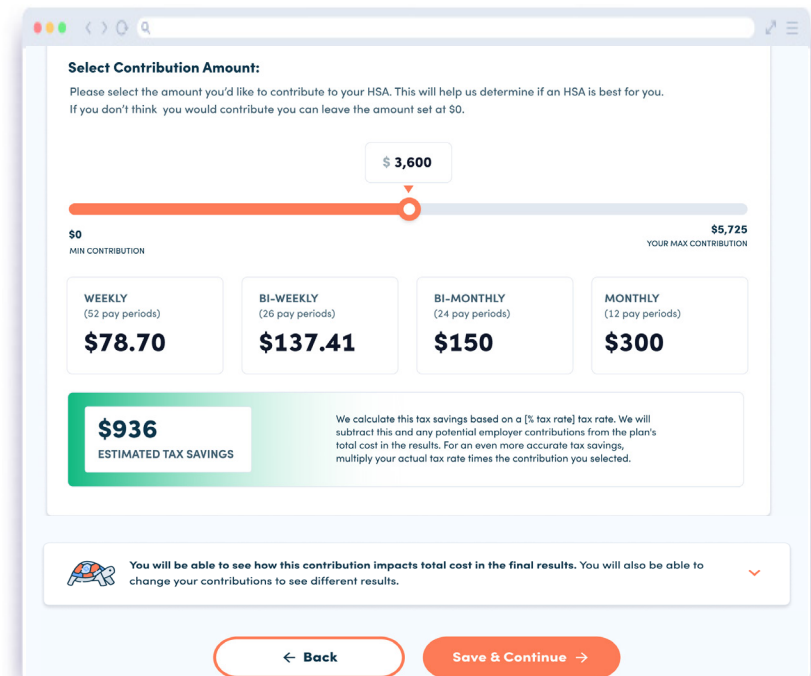
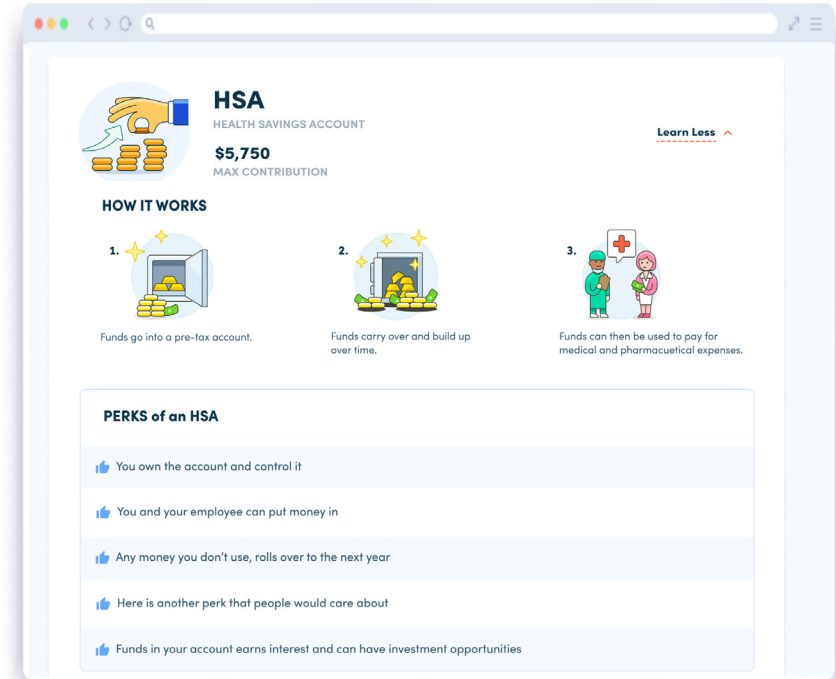
If your employer offers an HSA or FSA, we'll share education about each, highlight your employer's contribution, and ask whether and how much you'll contribute. This helps us give you accurate guidance!

1 Learn about the benefits of an HSA

If your employer offers an FSA, we'll share the benefits of an FSA as well.

2 See the affect of your potential contribution

Slide the bar to see how much you can save in taxes depending on your contribution.



See which health plan will save you the most money next year.

We highlight who's on the plan and the major factors contributing to costs.

View your health plan options ranked by:

- Total costs (how much we predict you will spend on health care over the year)
- Total savings (how much we predict you will save on health care over the year)
- The worst case scenario (the most you could spend on health care over the year)

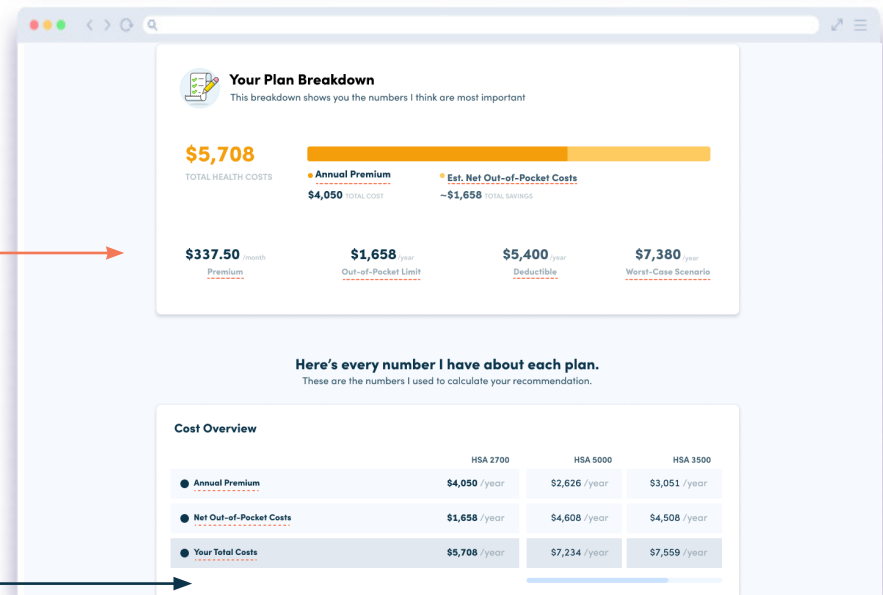
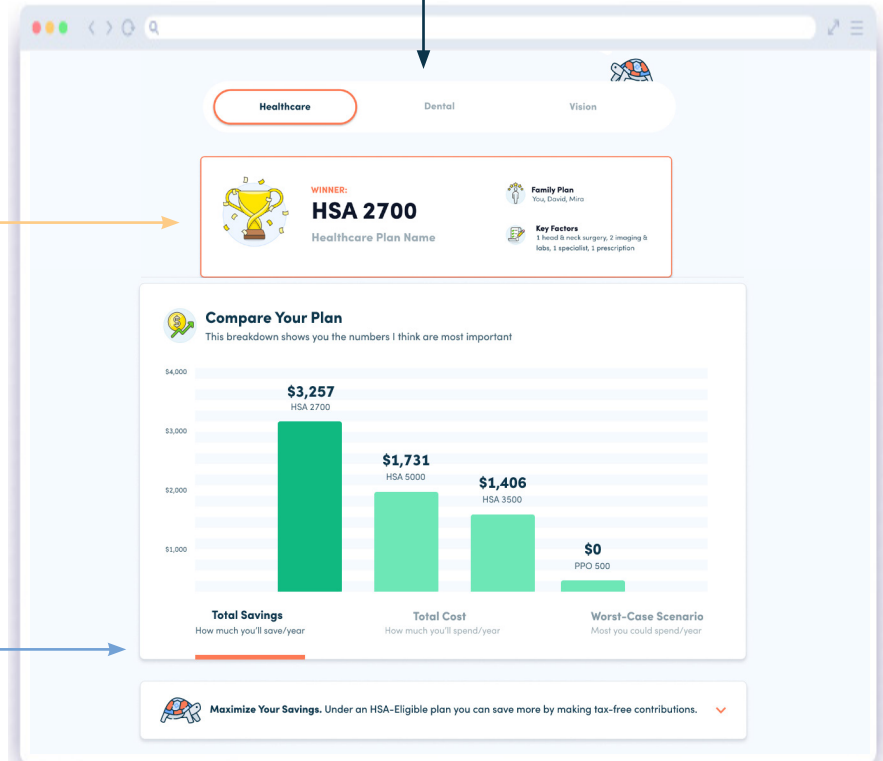
Click on the different titles below the bar graph to see each different view.

Understand how your health care costs will breakdown over the year for the winning plan:

See how your health care costs breakdown for each plan option:

- See how much of your health care costs go to premiums vs. out-of-pocket costs
- Compare these numbers for each plan option

Navigate between your healthcare, dental, and vision guidance.



Reading Your Results

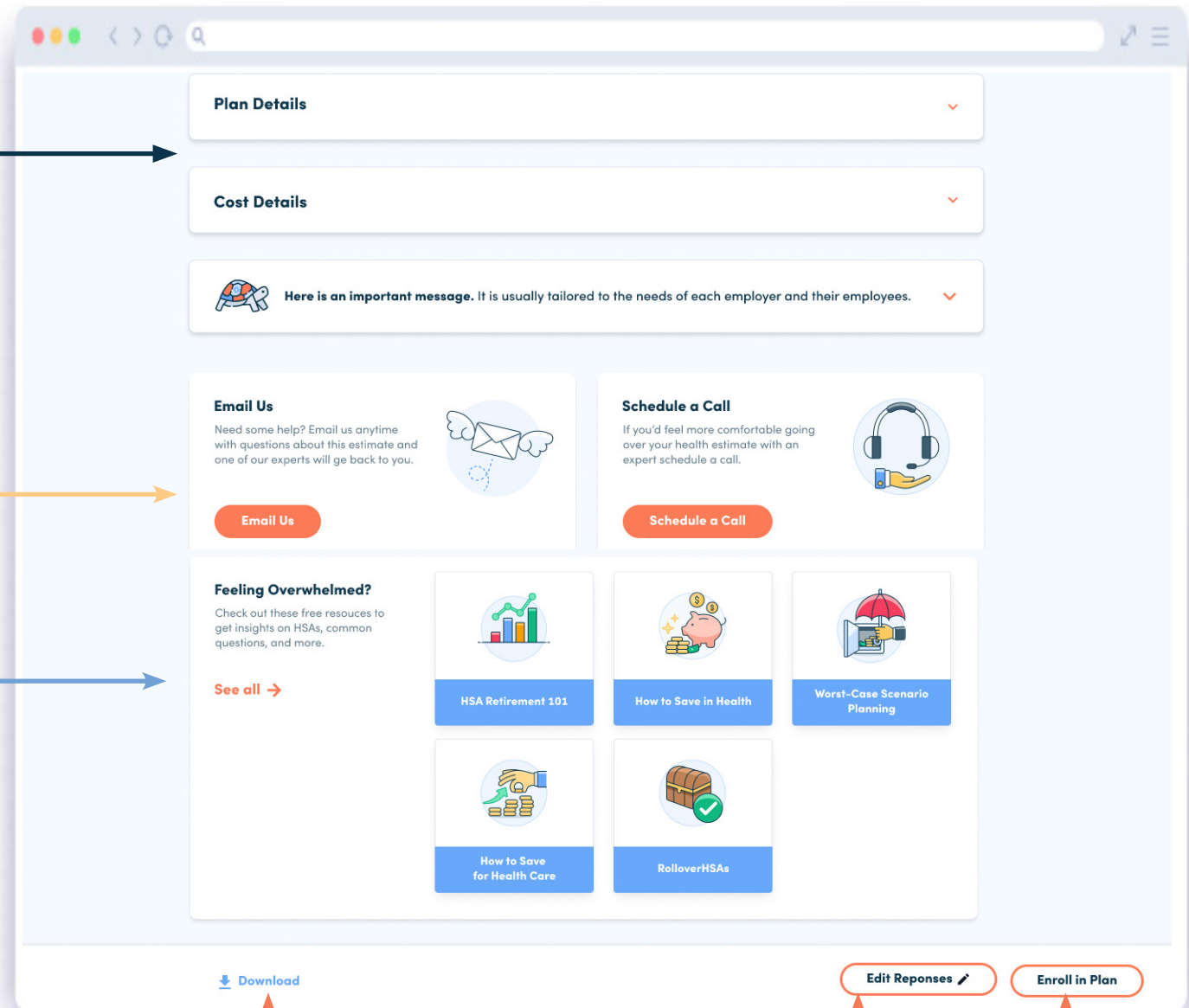
Get more details on your plan options and a full breakdown of how we calculate your expected costs, including what goes to premiums vs. copays, etc.

Schedule a call or email us with questions about your results.

Access resources.

Helpful hints:

- Download your results before you exit your window or update your usage!
- Keep an eye out for Theo turtle call-outs! Click on them for more information.



Download your results to view later.

Easily add and drop services (a surgery, a pregnancy) to see how those changes should affect your plan choice.

Visit your enrollment platform to enroll in your plan.

1 Tell Decision Doc if you need dental and vision guidance

Are you interested in learning about your employer's dental or vision plans?

☒ Dental

☒ Vision

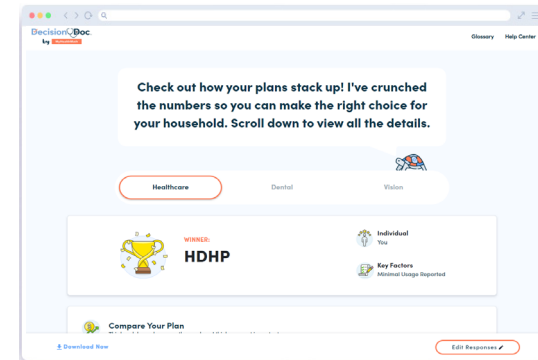
☐ I'm not interested.

[Back](#) [Save & Continue](#)

2 Results: Use the results navigation bar to view toggle between healthcare, dental and vision

When you reach your results, you'll immediately see your winning health plan. Click on "dental" or "vision" to view guidance on those benefits.

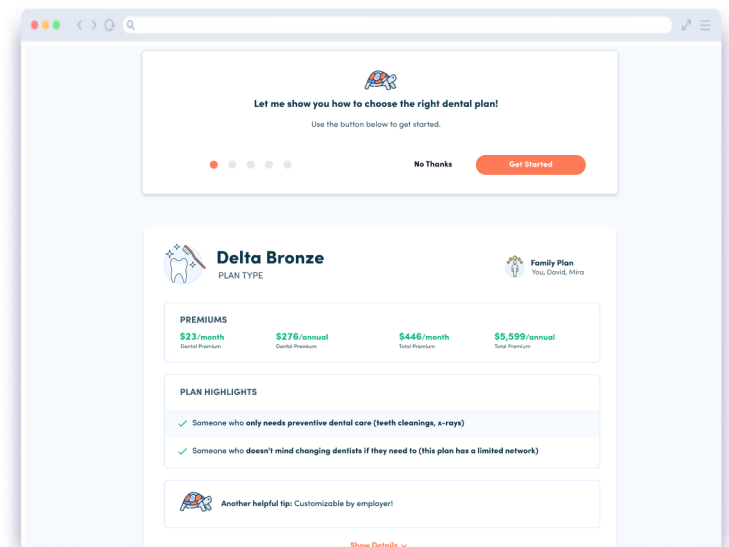
When you click download, you'll get a PDF of all guidance: health, dental and vision



3 Scroll down for plan specific guidance

- Check out your premium costs on each plan
- Learn about key highlights that make each plan stand out, such as whether they cover orthodontia
- Dig into the full coverage details

Hint: Theo the turtle will walk you through everything on the page!



Questions about Decision Doc?

- **Email us:** Email questions@myhealthmath.com and include your name and employer
- **Check out our resource library:** View our FAQ: <https://myhealthmath.com/employee-faqs/>
- **Talk to us on the phone:** Your company should have sent you a unique link to access Decision Doc. Click on the link; when you get to Decision Doc, click on help center to schedule a call with our team.

