

## TRANSDUCERS/PROBES

### EVO, EVOII



**CL3E**  
Low-frequency [2-6.4 MHz], deep penetrating convex transducer, 30 cm depth  
Transabdominal work in cattle, horses, small ruminants, camelids, large dogs, exotics/wildlife  
Equine neck, back, SI



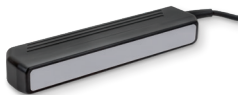
**CLi4HD**  
Side fire curved array [6-25 MHz] 24 cm depth  
Bovine reproduction, large animal abdomen, exotics, small ruminant



**L7HD**  
Linear transducer [5-9 MHz], 15 cm depth.  
Higher frequency, optimized focal position for reproductive exams. Bovine and equine reproduction, tendon and lung.



**L14X**  
High-frequency [6-14 MHz] linear transducer, 10 cm depth  
Equine tendons, small animal abdomens, neurovascular applications, superficial structure



**L3ASE**  
Linear transducer [3-6 MHz], 30 cm depth  
Bovine carcass merit



**C90PU-HD**  
Ovum pickup probe and handle [5-10 MHz], 14 cm depth  
Adjustable handle, shallower focus for better imaging; small height, lightweight  
Improved positioning, transducer array and needle exit  
Equine and bovine

### PRO, LITE



**L8.0**  
High-frequency [6-10 MHz] linear transducer, 8 cm depth  
Equine tendons, small animal abdomens, neurovascular applications, superficial structures



**MC8.0**  
High-frequency [6-10 MHz] microconvex transducer, 10 cm depth  
Small animal abdomen, bovine reproduction, small ruminant pregnancies, used with OPU aspiration device



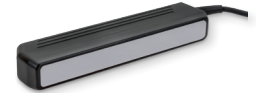
**CL4HDi**  
Side fire curved [2.5-5 MHz] 24 cm depth  
Bovine reproduction, large animal abdomen, exotics, small ruminant



**L7HDi**  
Linear transducer [5-8 MHz] 12 cm depth  
Bovine and equine reproduction, tendon



**CL3.8**  
Low-frequency [2.5-5 MHz] 24 cm depth, deep penetrating convex transducer  
Large animal abdomen, exotics, small ruminant



**L3.8AS**  
Linear transducer [2.5-5 MHz] 17.2 cm depth  
Bovine carcass merit



**C90PUi**  
Ovum pickup probe and handle [5-10 MHz], 14 cm depth  
Adjustable handle, shallower focus for better imaging; small height, lightweight  
Improved positioning of transducer array and needle exit  
Equine and bovine

### PROBE ACCESSORY



**I.C.E.®**  
The IBEX® Customizable Extension lessens fatigue and stress on the user's arm and shoulder

The I.C.E.® extension allows easy insertion or removal of the probe

- for PRO/LITE, I.C.E. is compatible with L6.2, L7HDi, CLi3.8, CLi4HDi transducers
- for EVO/EVO II, I.C.E. is compatible with L6E, L7HD, CLi3E, CLi4HD transducers

### A word about our cables...

All IBEX® cables are tested to 1.2 million flex cycles:

- Polyurethane cable jacket is extremely durable, chemical resistant and biocompatible per USP Class VI
- Copper alloy coax and copper alloy tinsel shield developed for controlled elongation
- Kevlar strength members embedded in cable bundle to protect coax breakage
- All materials RoHS compliant

### ...and our transducers

All our transducers are designed specifically for rugged environments. But if the worst happens, they can be repaired, too!

And we listen to you...we had multiple requests to re-design the MC80PU head and handle for ease of use. The result is the C90PU-HD!

The C9E is also new, honed to produce an improved image for the smallest of small animals.

## ACCESSORIES

### i3 LED GOGGLES

The i3 LED goggles are small, lightweight and compatible with all IBEX® veterinary ultrasound models as well as with Bantam and Easi-Scan [models 1-4].

They come with versatile mounting options: ratcheted headband, head strap and hat clip. Also included are detachable glare shields to block sunlight.

#### Custom designed optics

- LCD display with LED backlight
- half the weight of InSite2
- specially designed eye cups for inside and outdoor viewing
- GoPro mount
- 1-year warranty [warranty extensions available]



## OTHER ACCESSORIES



#### 2.4 GHZ WiFi Transmitter

- connects to all IBEX PRO and LITE veterinary ultrasound series
- uses goggles port—splitter is available if goggles will be used simultaneously



#### IBEX Waist Pouch

- accommodates the IBEX LITE and PRO series [in closed position]
- keeps unit self-contained and streamlined when scanning with headset



#### EVO® Remote

- Bluetooth connection—auto connects once paired with an EVO or EVO II
- 7 keys can be reassigned to any key for versatility
- use to control gain, depth, save and record images, or other custom features



#### EVO® Waist Pouch

- accommodates EVO and EVO II [in closed position]
- keeps unit self-contained and streamlined when scanning with headset



#### EVO® Sun Shade

- magnetic shade snaps on to the EVO/EVO II screen to allow easy viewing in bright conditions

