

IBEX EVO[®] II

portable | rugged | ultrasound



E.I. Medical Imaging[®]

EVO® II

The latest, most advanced model in the IBEX® family, with significantly better image resolution, color Doppler, remote control, improved features and remote image-viewing apps. EVO II is ideal for equine, companion animal, mixed species, zoos, and anyone demanding a high-quality image in a robust system. Rugged, splash resistant, and highly portable, with a new line of variable frequency transducers, the EVO II is ready to go wherever you need it most.

The next generation IBEX EVO II provides image quality never before seen in a portable, rugged ultrasound. Improved image quality allows the user faster and more accurate exams for any species.

At 6.4 pounds, the IBEX EVO II is designed to go anywhere, from an exam table in the clinic to cage-side to barn. With field-replaceable batteries you no longer need to worry about the closest outlet.

With sealed keyboards and probe connections, the IBEX EVO II can go anywhere your work takes you.

ACCESSORIES



i3 LED Goggles

- Small, lightweight
- Versatile mounting options: ratcheted headband, head strap and hat clip
- LCD display with LED backlight
- Specially designed eye cups for inside and outdoor viewing
- GoPro mount
- Standard, extended warranties available



EVO Sun Shade

- Magnetic shade snaps onto the EVO/EVO II screen for easy viewing in bright conditions



Bluetooth Remote

- Auto connects once paired with EVO or EVO II
- 7 keys can be re-assigned to any key on EVO/EVO II for ease-of-use
- Controls gain, depth, save/record images, or other custom features



EVO Waist Pouch

- Accommodates EVO/EVO II [closed]
- Keeps unit closed when using headset

FEATURES

- IBEX EVO II advanced imaging software
- 3x brighter display [1200 NITS]
- Full range of imaging modes: B, B+M, PD, Color, PWD available
- Ruggedized DuraScan® transducers 2-14 MHz
- Free software updates to latest technology
- Fast boot time for more uptime
- Customized, veterinary-specific exam presets
- 8.4 inch sealed, sunlight-readable LED Display
- Up to 3-hour battery time [field-replaceable]
- Lightweight 6.4 lb [2.9 kg]
- DICOM compatible
- Full patient image management system
- Standard, extended warranties available

EVOSTream™ WiFi Image Streaming

- Stream live studies directly to anyone with a mobile device [no WiFi service required]
- Educational tool for image sharing
- Provides image viewing from a safe distance
- Client communication tool

User-Defined Adjustments

- Preset veterinary-specific exam types
- Customizable presets and annotations

Battery

- Field-replaceable battery
- 2 hours of continuous battery life
- EVO® II is ready for any field environment, designed for the harshest environments
- Sealed keyboard can be thoroughly cleaned for bio-security and clinic appeal

On-Board Help

- Context sensitive help at your fingertips

EVO® II TRANSDUCERS + PROBES



eCL3
Low-frequency, deep penetrating convex transducer
Transabdominal work in cattle, horses, small ruminants, camelids, large dogs, exotics/wildlife; equine neck, back, SI



eCLi4
Side fire curved array [3-7 MHz], 24 cm depth
Bovine reproduction, large animal abdomen, exotics, small ruminant



eL14
6-14 MHz linear transducer
Equine tendons, small animal abdomens, neurovascular applications, superficial structure



eC6
Multi-frequency transducer, [4-9 MHz], 18 cm depth
Designed specifically for small animal use



eC9
Multi-frequency transducer, [5-10 MHz], 8 cm depth
Improved imaging, designed specifically for small animal use, i.e. cats, dogs



eL7
Linear transducer [5-9 MHz], 15 cm depth.
Higher frequency, optimized focal position for reproductive exams
Bovine and equine reproduction, tendon and lung



L3ASE
Linear transducer
Bovine carcass merit



eC90PU
Ovum pickup probe and handle [5-10 MHz], 14 cm depth
Adjustable handle, shallower focus for better imaging; small height, lightweight
Improved positioning of transducer array and needle exit
Equine and bovine

A WORD ABOUT OUR CABLES...

All IBEX® cables are tested to 1.2 million flex cycles:

- Custom designed cable jacket is extremely durable, chemical resistant and bio-compatible
- Designed specifically for use in the tough animal environment
- Kevlar strength members embedded in cable bundle to protect coax breakage
- All materials RoHS compliant

...and our transducers

All our transducers are designed specifically for rugged environments. But if the worst happens, they can be repaired, too!

And we listen to you...we had multiple requests to re-design the MC80PU head and handle for ease of use.

The result is the C90PU-HD!

The C9E is also new, honed to produce an improved image for the smallest of small animals.

PROBE ACCESSORY



I.C.E.® NEW, IMPROVED!

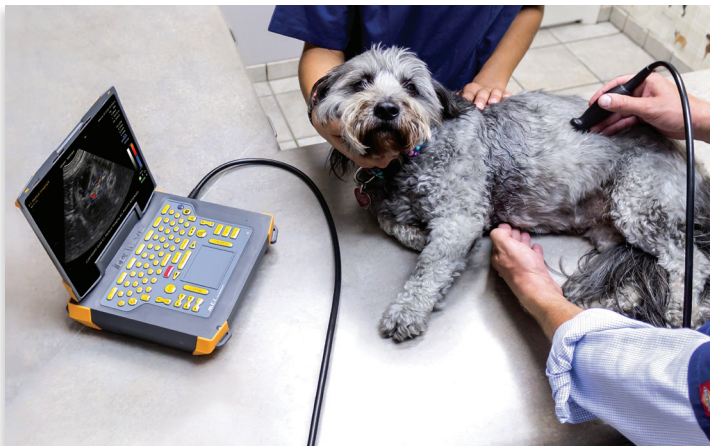
The IBEX Customizable Extension lessens fatigue and stress on the user's arm and shoulder.

New, improved version is 25% lighter, smaller diameter, more durable than previous models

The I.C.E. extension allows easy insertion or removal of the probe without damaging cables

Compatible with all IBEX and EVO rectal probes

FROM CLINIC TO BARN/FIELD/BOAT/ZOO



E.I. MEDICAL IMAGING

E.I. Medical Imaging® was founded in 1984 with the vision of developing a state-of-the-art, real-time ultrasound scanner to serve veterinarians and livestock producers world-wide.

Our products have evolved with the needs of the market. We are proud to be the only manufacturer of portable ultrasound systems engineered and developed in the United States specifically for the animal industry.

For over 30 years, the company's core values have remained intact: putting the customer first and delivering solid, effective ultrasound solutions. Today we are a world leader in the durable, portable, veterinary ultrasound industry.

CONTACT US

E.I. Medical Imaging
110 12th St. SW, Unit 102
Loveland, CO 80537-6396
www.eimedical.com/get-info

toll-free/1.866.365.6596
phone/970.669.1793
fax/970.669.1902
info@eimedical.com



EDUCATION

EIMI is committed to education. From online learning resources to classroom and wet lab training experiences, we are here to ensure that you get the most out of your ultrasound equipment. Our on-staff veterinarian and sales team are always available to assist you as you put your IBEX® system to work.

EIMI is also involved in educating future veterinarians, and offers two specific programs toward that end:

- EIU™ Student Externship Program—EIMI provides ultrasounds on loan to vet students for externship experiences.
- EIU™ Seminars—EIMI hosts ultrasound seminars at veterinary schools and in the field, comprising a short introductory lecture and hands-on wet labs.

CUSTOMER SUPPORT/LOANER PROGRAM

Downtime is not in the vernacular at E.I. Medical Imaging—service is the hallmark of our business. We engineer systems specifically for veterinary use and understand the challenges downtime brings. With industry-leading service turnaround times and a free loaner program, we ensure continuity of your business. All service is conducted at our EIMI facility in Loveland, Colorado, using only genuine EIMI parts.