

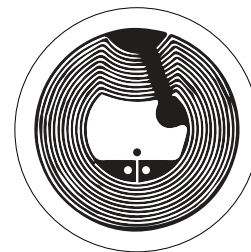
# CTNFC2424NT424

INLAY NTAG 424 CIRCINUS (THE COMPASS)

SIZE : 24 X 24MM

## PRODUCT DESCRIPTION

- PART NO.: INLAY NFC2424NT424 CIRCINUS ( THE COMPASS)
- INLAY DIMENSIONS: 24 x 24mm / 0.945" x 0.945"
- ANTENNA: AL (30 $\mu$ m) + PET (38 $\mu$ m)+AL (10 $\mu$ m)+Gap bridge AL(10 $\mu$ m)  
Etched Aluminum (30 $\mu$ m) + PET (38 $\mu$ m)+AL (10 $\mu$ m),
- PROTOCOL: ISO/IEC 14443A
- **CHIP:** NTAG 424
- FREQUENCY: 13.56MHz
- OPERATING MODE: Passive



## FORM FACTORS

1K = 1,000 LABELS

DRY INLAY	Inlay is delivered with no adhesive for application
WET INLAY	Inlay arrives with adhesive in place for application
PAPER FACE	Inlay is applied to an adhesive label or integrated hangtag
WEL (WIDE EDGE LEADING)	In roll form inlay is presented with wide edge leading
NEL (NARROW EDGE LEADING)	In roll form inlay is presented with narrow edge leading
ELEVATED OPTIONS	This inlay can be applied to just about any of our products, please inquire for more details

## ENVIRONMENT REQUIREMENTS

- Keep dry
- Do not expose to direct sunlight
- Recommended storage temperature: 20-30 °C
- Humidity condition: -5 - 60%
- RF circuits have no expiration date when stored in recommended conditions. However, the adhesive has a useful working life of 1 year from the date of manufacture in anti-static bag at 20-30°C