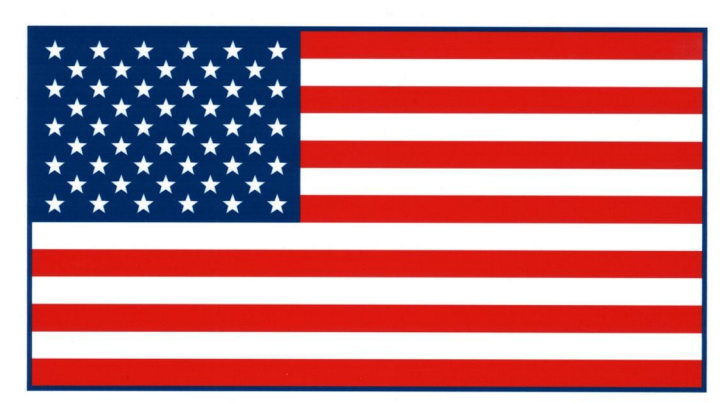


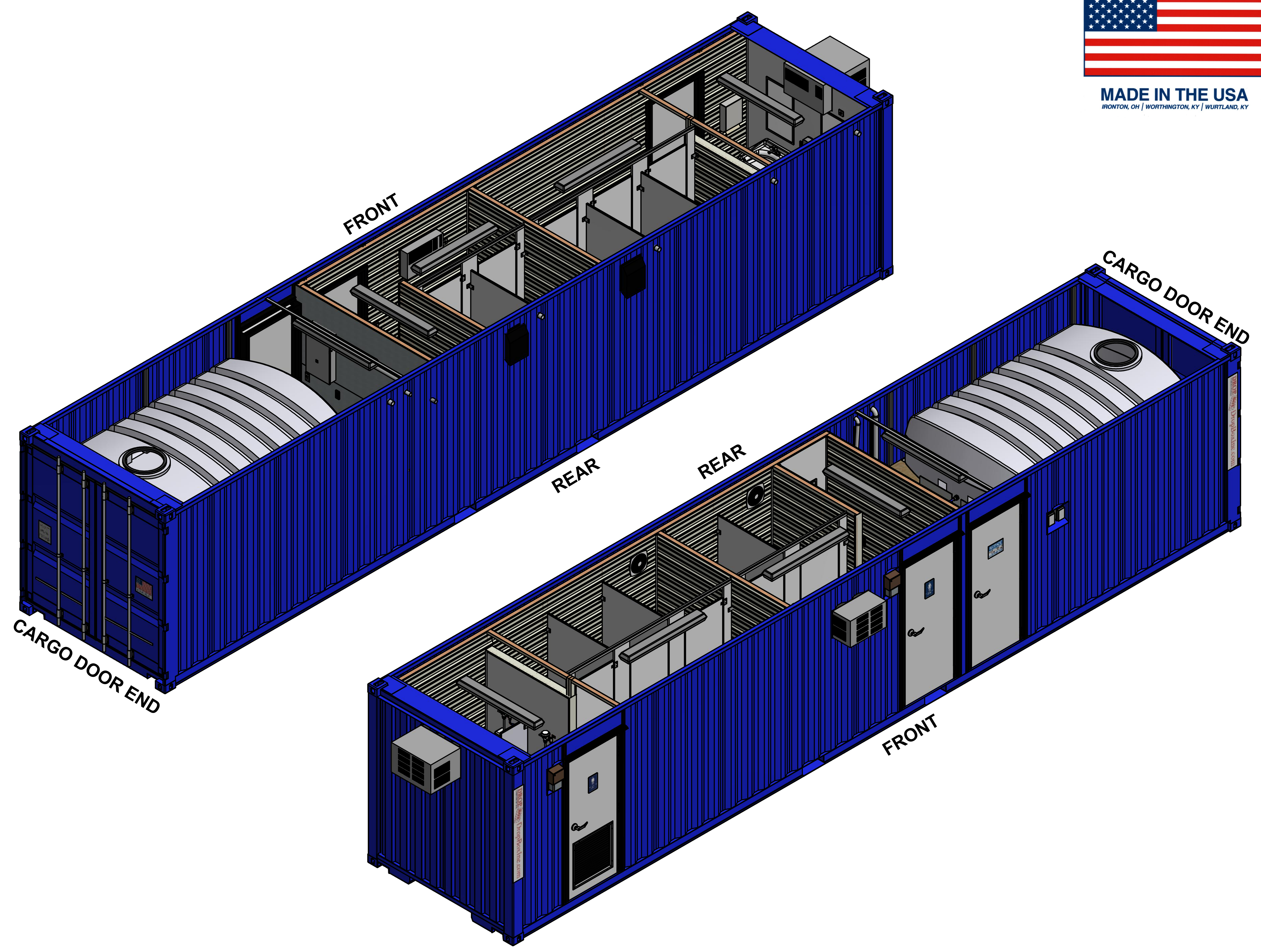
DropBoxInc.com



DROP
A Portable Solutions Group Company



MADE IN THE USA
IRONTON, OH | WORTHINGTON, KY | WURLAND, KY

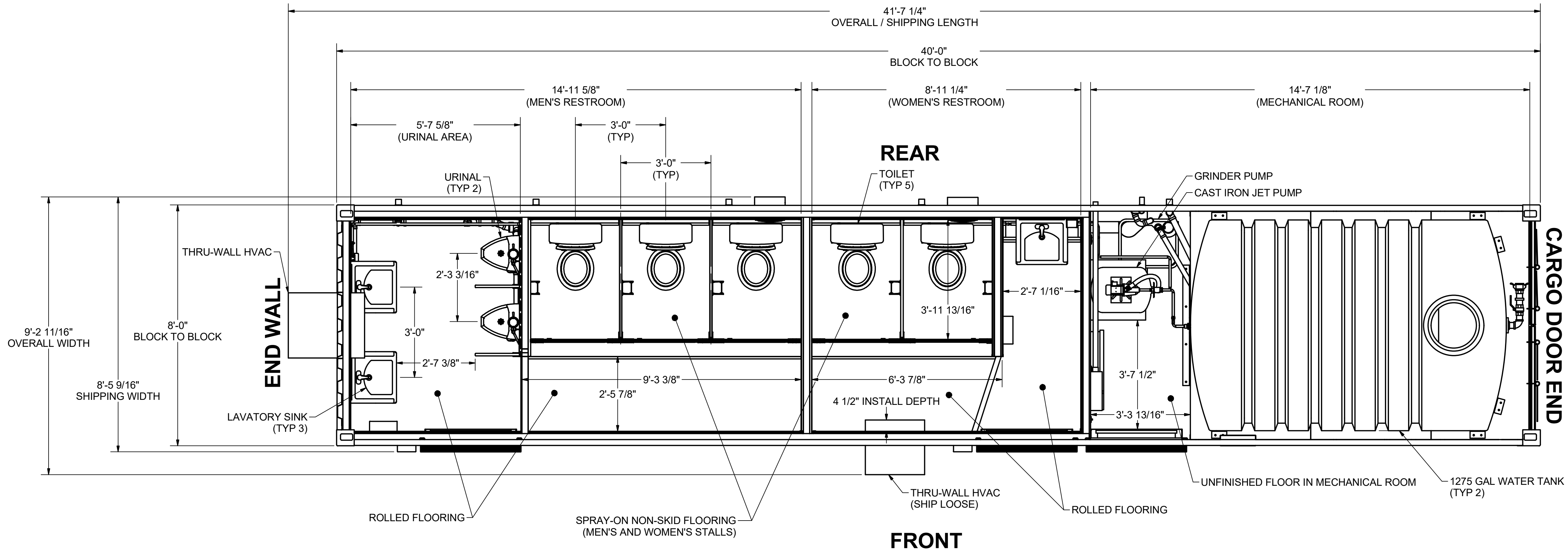


THIRD ANGLE PROJECTION	SHEET SIZE
	ANSI D

ISOMETRIC SHEETS - OVERALL 2

THIS DOCUMENT CONTAINS INFORMATION THAT IS CONFIDENTIAL AND PROPRIETARY TO DROPBOX, INC. THIS DOCUMENT IS FURNISHED ON THE UNDERSTANDING THAT THE DOCUMENT AND THE INFORMATION IT CONTAINS WILL NOT BE REPRODUCED OR DISCLOSED TO OTHERS WITHOUT THE WRITTEN CONSENT OF DROPBOX, INC. OR USED FOR ANY PURPOSE OTHER THAN CONDUCTING BUSINESS WITH DROPBOX, INC., AND WILL BE RETURNED AND ALL FURTHER USE DISCONTINUED UPON REQUEST BY DROPBOX, INC. COPYRIGHT DROPBOX, INC. FIRST YEAR COPYRIGHT IS FIRST YEAR INDICATED ON THIS DOCUMENT. ALL RIGHTS RESERVED.

<p>CUSTOMER: DROPBOX STANDARDS</p> <p>PROJECT NO: D17-026</p> <p>PROJECT: SCR4 - 40' SELF-CONTAINED RWR</p>		<p>DATE: 2/10/2017</p> <p>BY: BLM</p>		<p>COMMENTS:</p> <p>1 FINISH ALL MACHINES SURFACES AND BREAK ALL SHARP EDGES UNLESS OTHERWISE SPECIFIED.</p> <p>2 THE NUMBER IN THE FINISH SYMBOL IS 1/16" ACCEPTABLE ROUGHNESS VALUE IN A.A. MICRO-INCHES.</p>
<p>DESCRIPTION: REVISIONS</p>		<p>DATE: 3/31/2017</p> <p>BY: BLM</p>		
<p>INITIAL RELEASE</p>		<p>DATE: 3/31/2017</p> <p>BY: JES</p>		
<p>SCALE: N.T.S.</p>		<p>DATE: 3/30/2017</p> <p>BY: MEV</p>		
<p>DWG NO: D17-026-SCR4-0101</p>		<p>DATE: 3/31/2017</p> <p>BY: JES</p>		<p>TOLERANCES ON ALL DIMENSIONS UNLESS OTHERWISE NOTED SHALL BE:</p> <p>ONE PLACE DECIMAL ± 0.03</p> <p>TWO PLACE DECIMAL ± 0.005</p> <p>THREE PLACE DECIMAL ± 0.0005</p> <p>ANGULAR ± 1'</p>




GENERAL ARRANGEMENT - PLAN VIEW
SCALE 1/2" = 1'-0"

4	DATE	2/10/2017
3	BY	BLM
2	CHECKED	JES
1	ENG. APPR.	JES
	SALES APPR.	MEV
	MFG. APPR.	
	O.A.	
	SCALE	1/2" = 1'-0"
	DWG NO	D17-026-SCR4-0200

0	3/31/2017	BLM	INITIAL RELEASE
	NO.	DATE	BY
			DESCRIPTION
			REVISIONS

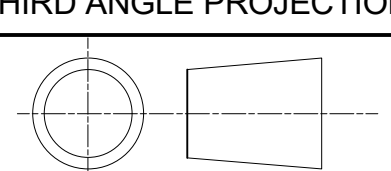
TITLE		GENERAL ARRANGEMENT - PLAN VIEW
-------	--	---------------------------------

CUSTOM CONTAINER
MODIFICATION SPECIALISTS
FOR SHIPMENT WORLDWIDE



DROP BOX
A Portable Solutions Group Company

CUSTOMER: DROPBOX STANDARDS
PROJECT NO: D17-026
PROJECT: SCR4 - 40' SELF-CONTAINED RWR

THIRD ANGLE PROJECTION	SHEET SIZE
	ANSI D

THIS DOCUMENT CONTAINS INFORMATION THAT IS CONFIDENTIAL AND PROPRIETARY TO DROPBOX, INC. THIS DOCUMENT IS FURNISHED ON THE UNDERSTANDING THAT THE DOCUMENT AND THE INFORMATION IT CONTAINS WILL NOT BE REPRODUCED OR DISCLOSED TO OTHERS WITHOUT THE WRITTEN CONSENT OF DROPBOX, INC. OR USED FOR ANY PURPOSE OTHER THAN CONDUCTING BUSINESS WITH DROPBOX, INC., AND WILL BE RETURNED AND ALL FURTHER USE DISCONTINUED UPON REQUEST BY DROPBOX, INC. COPYRIGHT DROPBOX, INC. FIRST YEAR COPYRIGHT IS FIRST YEAR INDICATED ON THIS DOCUMENT. ALL RIGHTS RESERVED.

TOLERANCES ON ALL DIMENSIONS UNLESS OTHERWISE NOTED SHALL BE:
ONE PLACE DECIMAL ± 0.03
TWO PLACE DECIMAL ± 0.005
THREE PLACE DECIMAL ± 0.005
ANGULAR ± 1'

FINISH ALL SURFACES AND BREAK ALL SHARP EDGES UNLESS OTHERWISE SPECIFIED.
THE NUMBER IN THE FINISH SYMBOL $\frac{1}{16}$ IS THE MAXIMUM ACCEPTABLE ROUGHNESS VALUE IN A.A. MICRO-INCHES.