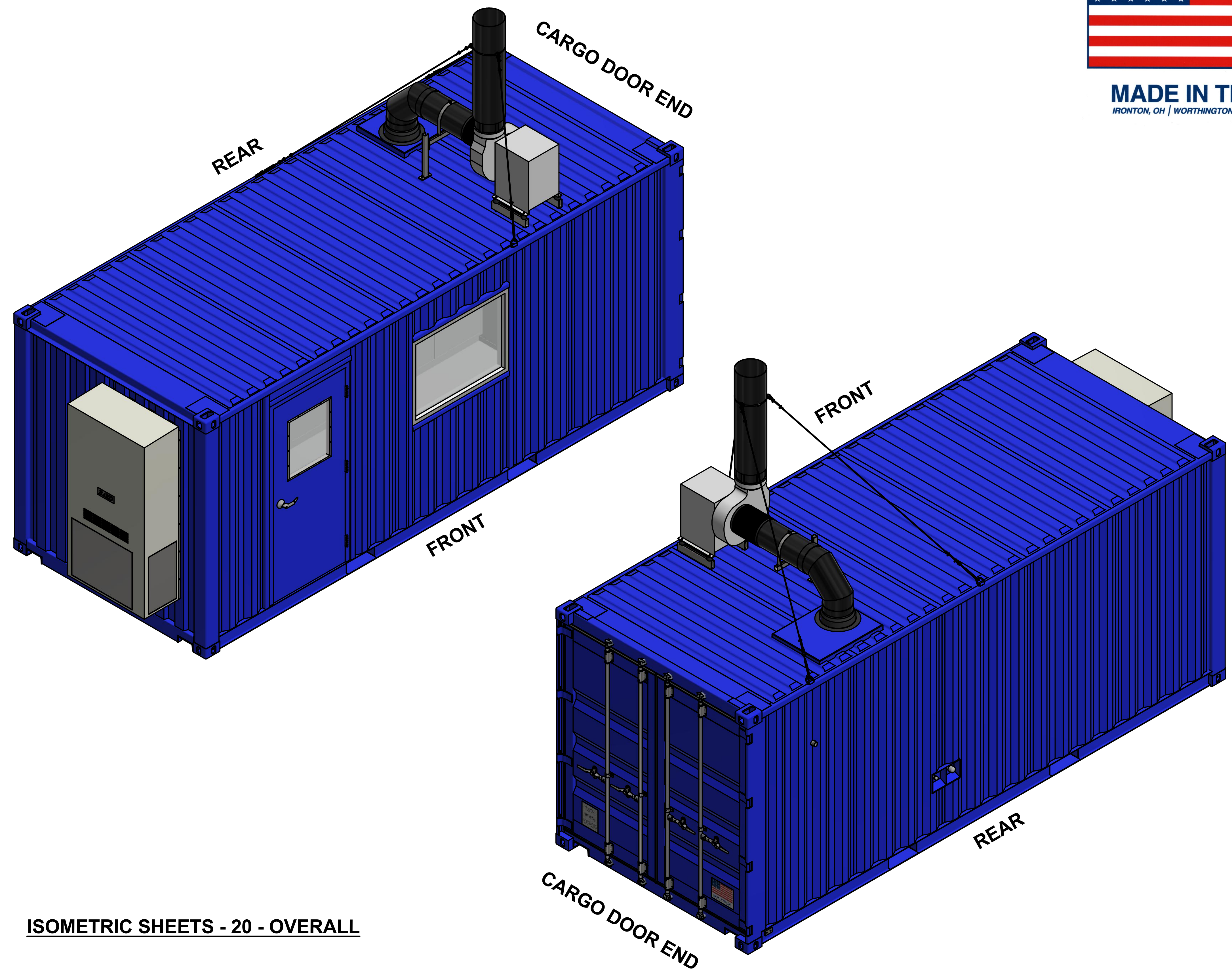


DropBoxInc.com

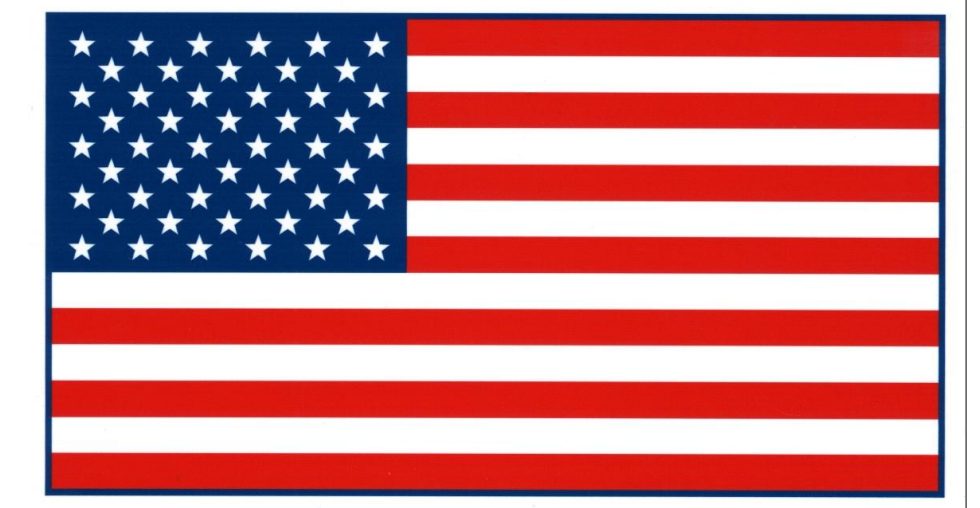


DROP
A Portable Solutions Group Company



ISOMETRIC SHEETS - 20 - OVERALL

THIRD ANGLE PROJECTION	SHEET SIZE
	ANSI D



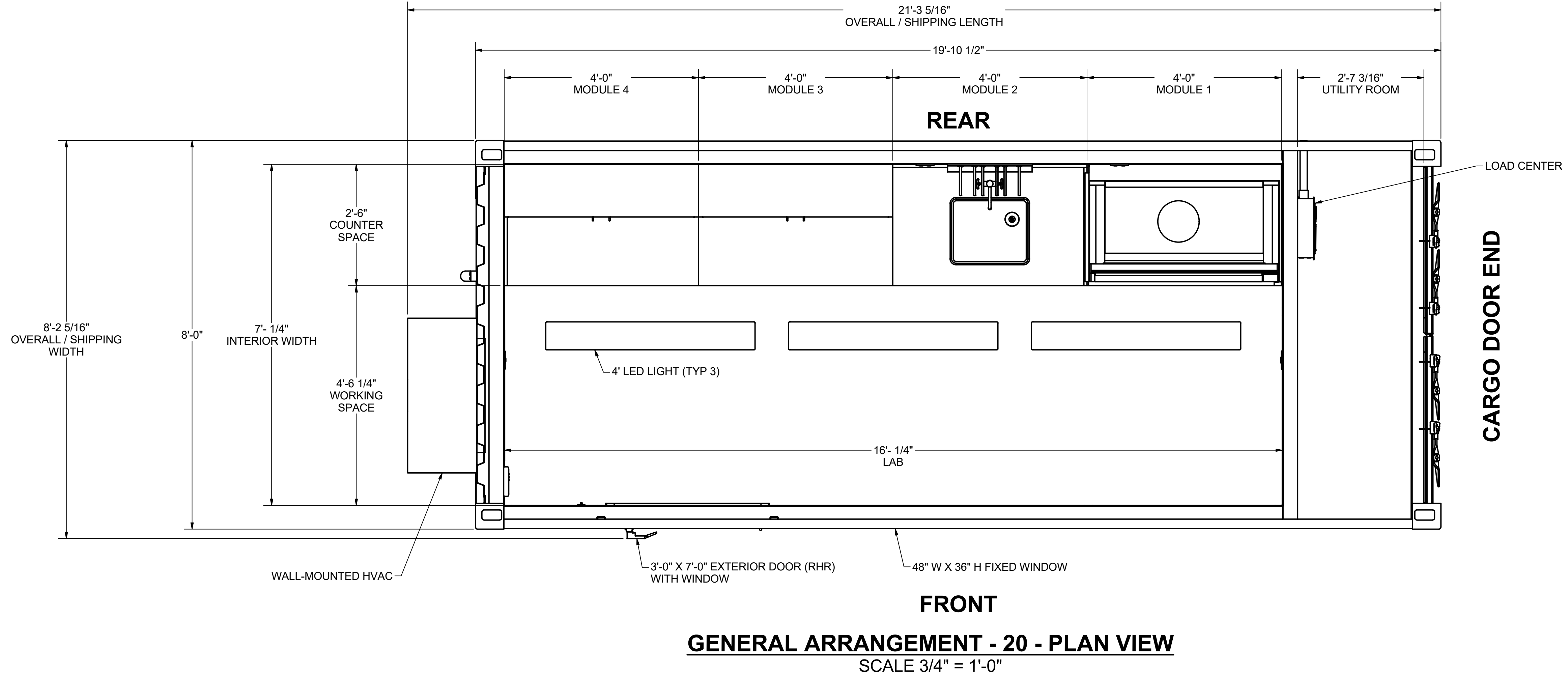
MADE IN THE USA
IRONTON, OH | WORTHINGTON, KY | WURLAND, KY

DRAWING DEPICTS BASE CONFIGURATION,
SEE EXTERIOR ELEVATIONS SHEETS FOR
ADDITIONAL OPTIONS.

THIS DOCUMENT CONTAINS INFORMATION THAT IS CONFIDENTIAL AND PROPRIETARY TO DROPBOX, INC. THIS DOCUMENT IS FURNISHED ON THE UNDERSTANDING THAT THE DOCUMENT AND THE INFORMATION IT CONTAINS WILL NOT BE REPRODUCED OR DISCLOSED TO OTHERS WITHOUT THE WRITTEN CONSENT OF DROPBOX, INC. OR USED FOR ANY PURPOSE OTHER THAN CONDUCTING BUSINESS WITH DROPBOX, INC., AND WILL BE RETURNED AND ALL FURTHER USE DISCONTINUED UPON REQUEST BY DROPBOX, INC. COPYRIGHT DROPBOX, INC. FIRST YEAR COPYRIGHT IS FIRST YEAR INDICATED ON THIS DOCUMENT. ALL RIGHTS RESERVED.

DRAWN		BY	DATE	COMMENTS:
CHECKED		REA	3/6/2019	
ENG. APPR.		JES	9/3/2019	
SALES APPR.		JES	9/3/2019	
O.A.		N.T.S.		FINISH ALL MACHINED SURFACES AND BREAK ALL SHARP EDGES UNLESS OTHERWISE SPECIFIED.
SCALE		N.T.S.		
DRAWING #		D19-040-MLBX-0120		
NO.		DATE	BY	DESCRIPTION
A	8/30/2019	REA		SALES UPDATES
0	4/30/2019	REA		INITIAL RELEASE
REVISIONS				
TITLE				
ISOMETRIC SHEETS - 20 - OVERALL				
CUSTOMER		DROPTOX STANDARDS		
PROJECT #		D19-040		
PROJECT		MODULAR LAB BASE CONFIGURATIONS		
TOLERANCES ON ALL DIMENSIONS UNLESS OTHERWISE NOTED SHALL BE: ONE PLACE DECIMAL ± 0.03 TWO PLACE DECIMAL ± 0.005 THREE PLACE DECIMAL ± 0.0005 ANGULAR ± 1°				

		FINISH SCHEDULE					
SPACE	MATERIALS	WALLS	CEILING	FLOOR	NOTES		
LAB	FRAMING	3-5/8" 20GA METAL STUD, 24" OC	3-5/8" 20GA METAL STUD, 24" OC	EXISTING CONTAINER PURLINS	N/A		
	INSULATION	R-15 MINERAL WOOL	R-15 MINERAL WOOL	N/A	N/A		
	SUBSURFACE	N/A	N/A	EXISTING 1-1/8" PLYWOOD	N/A		
UTILITY ROOM	SURFACE	22GA GALVANNEAL, PAINTED WHITE	22GA GALVANNEAL, PAINTED WHITE	SPRAY-ON SKID-RESISTANT	N/A		
	FRAMING	N/A	N/A	EXISTING CONTAINER PURLINS	N/A		
	INSULATION	N/A	N/A	N/A	N/A		
	SUBSURFACE	N/A	N/A	EXISTING 1-1/8" PLYWOOD	N/A		
	SURFACE	EXISTING CORRUGATION, PAINTED GRAY	EXISTING CORRUGATION, PAINTED GRAY	N/A	LAB WALL 22GA GALVANNEAL, PAINTED GRAY		



GENERAL ARRANGEMENT - 20 - PLAN VIEW
SCALE 3/4" = 1'-0"

HVAC DESIGN CONDITIONS:

APPLICABLE CODES: 2018 INTERNATIONAL ENERGY CONSERVATION CODE (IECC)*

*BASE CONFIGURATION INCLUDES BASE INSULATION VALUES AS SHOWN IN INTERIOR FINISH SCHEDULE. HVAC SIZING IS PER THESE VALUES AND SIZED PER 2018 IECC. INSULATION VALUES VARY BY LOCATION AND NEED TO BE REVIEWED WITH CUSTOMER. SOME STATES HAVE ADDITIONAL CODE REQUIREMENTS INCLUDING HEAT PUMP IN LIEU OF AIR CONDITIONER.

SUMMER :
OUTSIDE DRY BULB TEMPERATURE: 100°F / 95°F
OUTSIDE WET BULB TEMPERATURE: 70°F / 72°F
INSIDE DRY BULB TEMPERATURE: 75°F
INSIDE RELATIVE HUMIDITY: 45-95% (HUMIDISTAT SETTING)

WINTER :
OUTSIDE DRY BULB TEMPERATURE: 22°F
LAB INSIDE DRY BULB TEMPERATURE: 70°F

LAB HOOD:
COMPLIANT: ANSI Z9.5 COMPLIANT
LAB HOOD OPERATION (SASH STOP): 520 CFM (FACE VELOCITY: 100 FPM | 18" SASH OPENING)

COMMERCIAL ROOM VENTILATOR (CRV) :
SET POSITION: 9

WALL-MOUNTED HVAC EQUIPMENT SELECTION:

- MANUFACTURER: BARD
- MODEL NUMBER: W30ABDA10MPXXXE
- SPECIFICATIONS: W30AB = 2.5TON, 11EER, D = HOT-GAS-REHEAT DEHUMIDIFICATION, A = 208/240/1, 10 = 10.0 KW HEATER, M = COMMERCIAL VENTILATOR - ON/OFF, P = 2" PLEATED MERV 8 FILTER, X = BEIGE
- SUPPLY GRILLE MODEL NUMBER: SG-3 INCLUDES INDIVIDUALLY ADJUSTABLE VERTICAL AND HORIZONTAL BLADES .750 SPACING.

STRUCTURAL DESIGN LOADS:

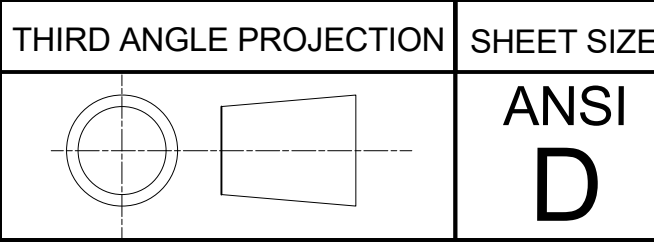
APPLICABLE CODES: 2015 INTERNATIONAL BUILDING CODE

- RISK CATEGORY: II
- ROOF LIVE LOAD (LL_r): 30 PSF
- FLOOR LIVE LOAD (LL_f): 100 PSF
- GROUND SNOW LOAD (p_g): 30 PSF
 - EXPOSURE FACTOR (C_e): 1.0
 - THERMAL FACTOR (C_t): 1.2
 - SLOPE FACTOR (C_s): 1.0
 - FLAT ROOF SNOW LOAD (p_f): 25.2 PSF
 - DESIGN SNOW DUE TO DRIFTING/SLIDING SNOW: 0 PSF
- BASIC WIND SPEED AND EXPOSURE: 130 MPH, EXP C
 - CLOSED (GC_{pi}) = +/-0.18
 - EXPOSURE COEFFICIENT (K_z): 0.85 (AT MEAN ROOF HEIGHT)
 - WIND DIRECTIONALITY FACTOR (K_d): 0.85
 - TOPOGRAPHIC FACTOR (K_{zt}): 1.0
 - VELOCITY PRESSURE (q_z): 31.2 PSF
- SEISMIC DESIGN CATEGORY B (S_s=2.500g; S₁=0.749g)
 - SITE CLASS D
 - ELF ANALYSIS
 - RESPONSE MODIFICATION COEFFICIENT: R = 3.0
 - SEISMIC COEFFICIENT: C_s = 0.333
 - BASE SHEAR: 4.77 KIP

ITEMS TO BE SITE INSTALLED:

THE FOLLOWING ITEMS ARE TO BE SITE INSTALLED AND SUBJECT TO LOCAL CODE COMPLIANCE:

- FOUNDATION AND CONNECTIONS** - CORNER BLOCKS UTILIZED FOR SITE TIE-DOWN CONNECTIONS. SITE CONTRACTOR IS RESPONSIBLE FOR TIE-DOWN CONNECTION DESIGN AND INSTALLATION.
- ELECTRICAL** - SINGLE POINT ELECTRICAL SHOWN ON DRAWINGS. SITE CONTRACTOR IS RESPONSIBLE FOR BUILDING ELECTRICAL FEEDERS TO BE INSTALLED FROM SITE UTILITIES.
- SITE RESTRICTIONS** - SITE CONTRACTOR IS RESPONSIBLE TO ENSURE BARRIER FREE ACCESSIBILITY TO BUILDING.
- LAB HOOD EXHAUST** - DUE TO SHIPPING RESTRICTIONS, LAB HOOD VENT IS SITE CONTRACTOR'S RESPONSIBILITY. MATERIALS WILL BE SHIPPED LOOSE INSIDE LAB INCLUDING DROP, WIRE ROPES, AND FASTENING HARDWARE.



DRAWING DEPICTS BASE CONFIGURATION, SEE INTERIOR SECTIONS SHEETS FOR ADDITIONAL OPTIONS.

THIS DOCUMENT CONTAINS INFORMATION THAT IS CONFIDENTIAL AND PROPRIETARY TO DROPBOX, INC. THIS DOCUMENT IS FURNISHED ON THE UNDERSTANDING THAT THE DOCUMENT AND THE INFORMATION IT CONTAINS WILL NOT BE REPRODUCED OR DISCLOSED TO OTHERS WITHOUT THE WRITTEN CONSENT OF DROPBOX, INC. OR USED FOR ANY PURPOSE OTHER THAN CONDUCTING BUSINESS WITH DROPBOX, INC., AND WILL BE RETURNED AND ALL FURTHER USE DISCONTINUED UPON REQUEST BY DROPBOX, INC. COPYRIGHT DROPBOX, INC. FIRST YEAR COPYRIGHT IS FIRST YEAR INDICATED ON THIS DOCUMENT. ALL RIGHTS RESERVED.

TOLERANCES ON ALL DIMENSIONS UNLESS OTHERWISE NOTED SHALL BE: ONE PLACE DECIMAL ± 0.03 TWO PLACE DECIMAL ± 0.015 THREE PLACE DECIMAL ± 0.005 ANGULAR ± 1°	
FINISH ALL MACHINED SURFACES AND BREAK ALL SHARP EDGES UNLESS OTHERWISE SPECIFIED.	THE NUMBER IN THE FINISH SYMBOL IS THE MAXIMUM ACCEPTABLE ROUGHNESS VALUE IN A.A. MICROINCHES.
DATE	BY
3/6/2019	REA
9/3/2019	JES
9/3/2019	JES
SALES APPR	SALES APPR
MFG APPR	MFG APPR
O.A.	O.A.
SCALE 3/4" = 1'-0"	DRAWING # D19-040-MLBX-0220
REVISIONS	
NO.	DATE
0	4/30/2019
1	8/30/2019
2	9/3/2019
3	3/6/2019
4	3/6/2019
DESCRIPTION	
SALES UPDATES	
INITIAL RELEASE	
TITLE GENERAL ARRANGEMENT - 20 - PLAN VIEW	
CUSTOMER DROPTBOX STANDARDS	
PROJECT # D19-040	
PROJECT MODULAR LAB BASE CONFIGURATIONS	
CUSTOMER MODIFICATION SPECIALISTS FOR SHIPMENT WORLDWIDE	
DROPTBOX A Portable Solutions Group Company	