

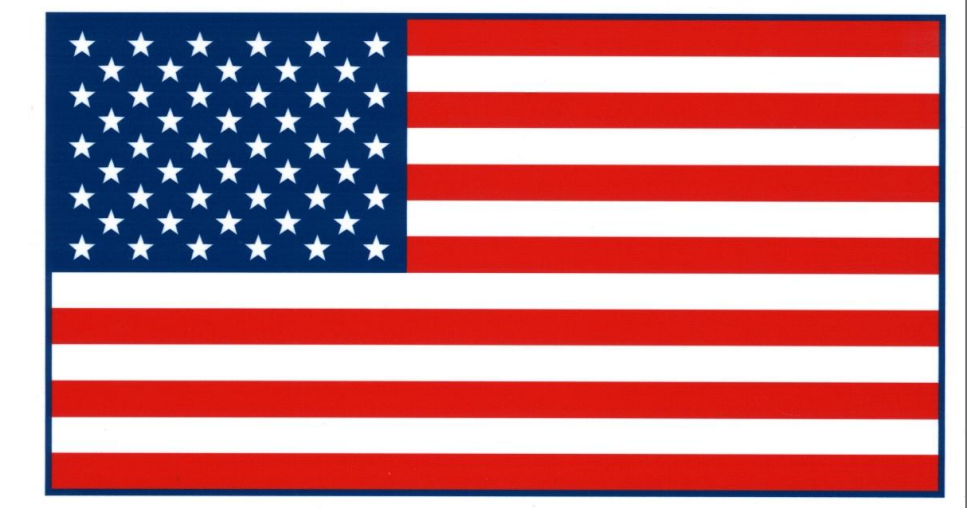
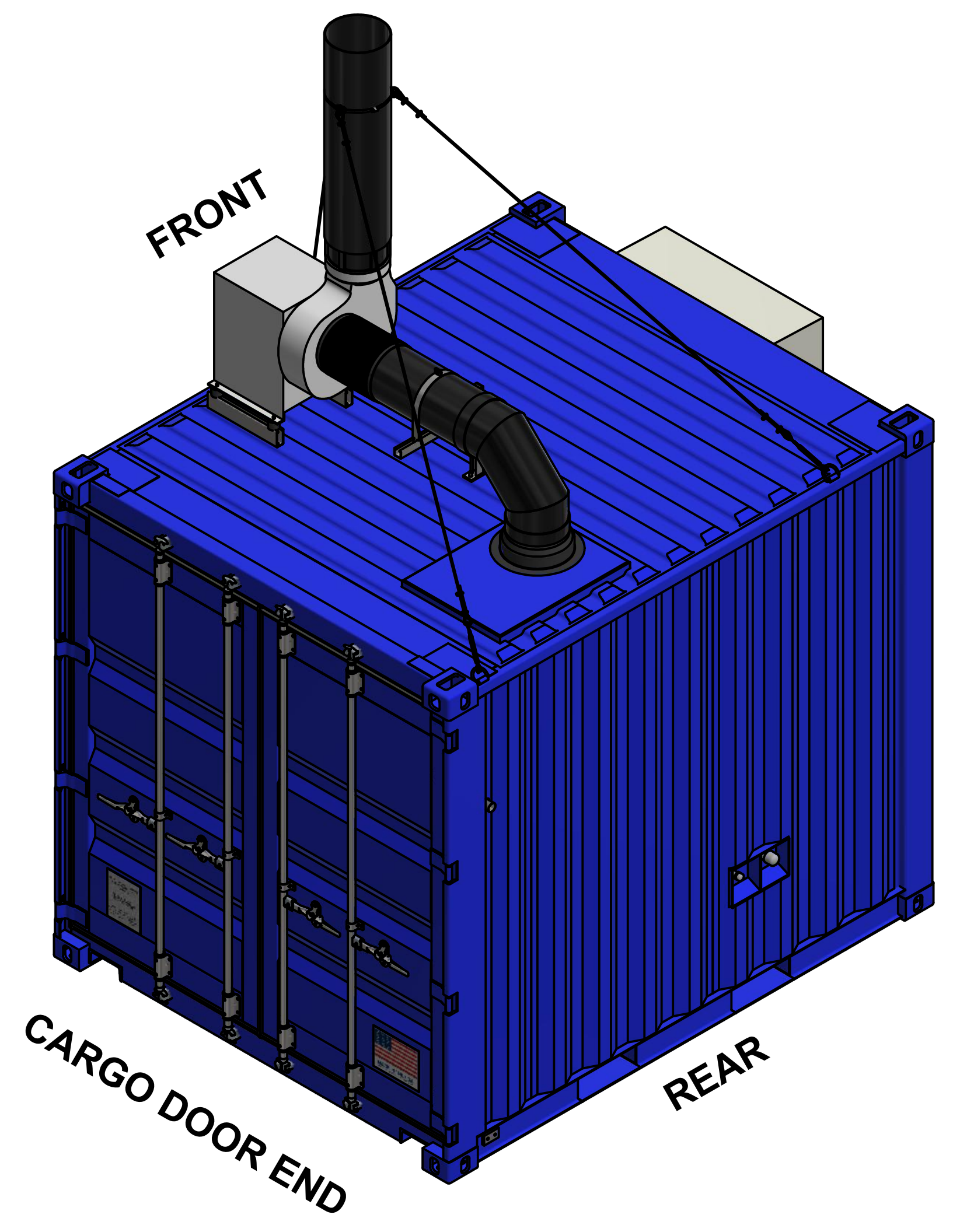
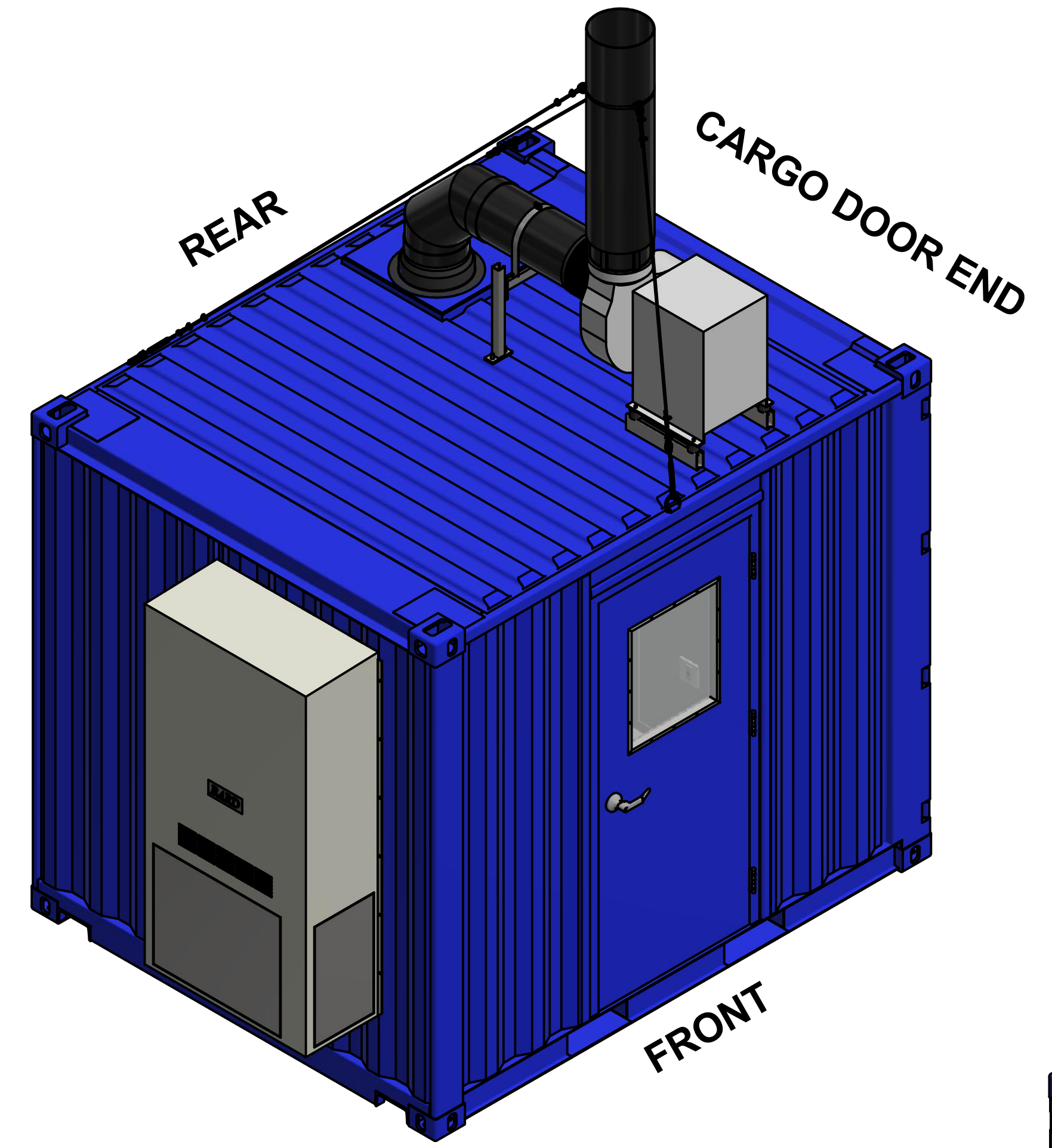


DROP[®]
A Portable Solutions Group Company

DropBoxInc.com

THIRD ANGLE PROJECTION	SHEET SIZE
	ANSI D

ISOMETRIC SHEETS - 10 - OVERALL



MADE IN THE USA
IRONTON, OH | WORTHINGTON, KY | WURLAND, KY

CUSTOM CONTAINER
MODIFICATION SPECIALISTS
FOR SHIPMENT WORLDWIDE

DROX[®]
A Portable Solutions Group Company

CUSTOMER
D19-040
PROJECT

DROXBOX STANDARDS
MODULAR LAB BASE CONFIGURATIONS

NO.	DATE	BY	DESCRIPTION
A	8/30/2019	REA	SALES UPDATES
0	4/30/2019	REA	INITIAL RELEASE

REVISIONS

BY	DATE
REA	3/6/2019
JES	9/3/2019
JES	9/3/2019

DRAWING #
D19-040-MLBX-0110

DATE	BY	DESCRIPTION
4		
3		
2		
1		

COMMENTS:
FINISH ALL MACHINED SURFACES AND
BREAK ALL SHARP EDGES UNLESS OTHERWISE SPECIFIED.

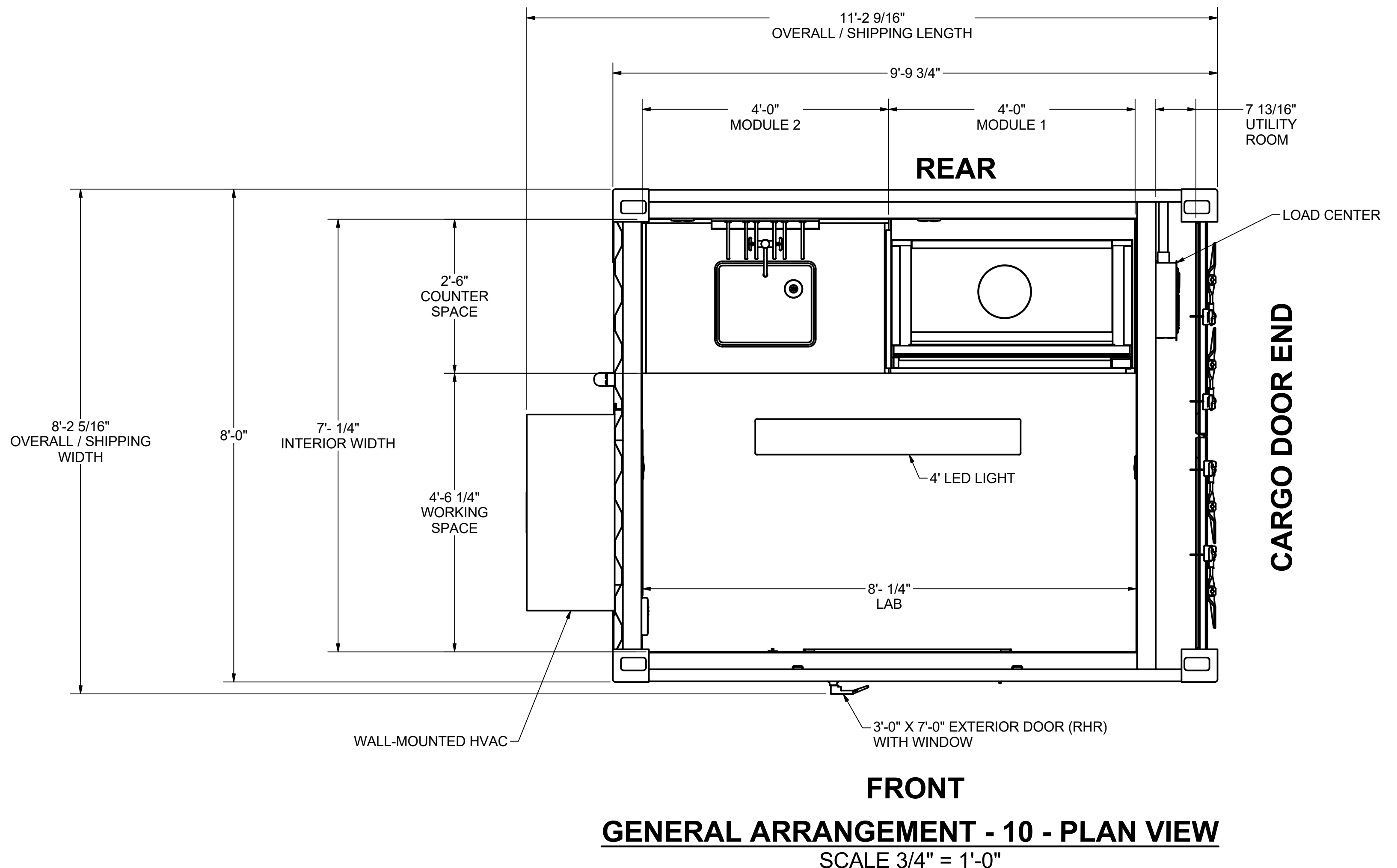
THE NUMBER IN THE FINISH SYMBOL IS THE MAXIMUM
ACCEPTABLE ROUGHNESS VALUE IN A.A. MICRO-INCHES.

TOLERANCES ON ALL DIMENSIONS UNLESS
OTHERWISE NOTED SHALL BE:
ONE PLACE DECIMAL ± 0.03
TWO PLACE DECIMAL ± 0.005
THREE PLACE DECIMAL ± 0.0005
ANGULAR ± 1°

DRAWING DEPICTS BASE CONFIGURATION,
SEE EXTERIOR ELEVATIONS SHEETS FOR
ADDITIONAL OPTIONS.

THIS DOCUMENT CONTAINS INFORMATION THAT IS CONFIDENTIAL AND PROPRIETARY TO DROPBOX, INC.
THIS DOCUMENT IS FURNISHED ON THE UNDERSTANDING THAT THE DOCUMENT AND THE INFORMATION IT CONTAINS WILL
NOT BE REPRODUCED OR DISCLOSED TO OTHERS WITHOUT THE WRITTEN CONSENT OF DROPBOX, INC.
OR USED FOR ANY PURPOSE OTHER THAN CONDUCTING BUSINESS WITH DROPBOX, INC., AND WILL BE RETURNED
AND ALL FURTHER USE DISCONTINUED UPON REQUEST BY DROPBOX, INC. COPYRIGHT DROPBOX, INC.
FIRST YEAR COPYRIGHT IS FIRST YEAR INDICATED ON THIS DOCUMENT. ALL RIGHTS RESERVED.

SPACE	MATERIALS	WALLS	CEILING	FLOOR	NOTES
LAB	FRAMING	3-5/8" 20GA METAL STUD, 24" OC	3-5/8" 20GA METAL STUD, 24" OC	EXISTING CONTAINER PURLINS	N/A
	INSULATION	R-15 MINERAL WOOL	R-15 MINERAL WOOL	N/A	N/A
	SUBSURFACE	N/A	N/A	EXISTING 1-1/8" PLYWOOD	N/A
	SURFACE	22GA GALVANNEAL, PAINTED WHITE	22GA GALVANNEAL, PAINTED WHITE	SPRAY-ON SKID-RESISTANT	N/A
UTILITY ROOM	FRAMING	N/A	N/A	EXISTING CONTAINER PURLINS	N/A
	INSULATION	N/A	N/A	N/A	N/A
	SUBSURFACE	N/A	N/A	EXISTING 1-1/8" PLYWOOD	N/A
	SURFACE	EXISTING CORRUGATION, PAINTED GRAY	EXISTING CORRUGATION, PAINTED GRAY	N/A	LAB WALL 22GA GALVANNEAL, PAINTED GRAY



HVAC DESIGN CONDITIONS:

APPLICABLE CODES: 2018 INTERNATIONAL ENERGY CONSERVATION CODE (IECC)*

*BASE CONFIGURATION INCLUDES BASE INSULATION VALUES AS SHOWN IN INTERIOR FINISH SCHEDULE. HVAC SIZING IS PER THESE VALUES AND SIZED PER 2018 IECC. INSULATION VALUES VARY BY LOCATION AND NEED TO BE REVIEWED WITH CUSTOMER. SOME STATES HAVE ADDITIONAL CODE REQUIREMENTS INCLUDING HEAT PUMP IN LIEU OF AIR CONDITIONER.

SUMMER :
 OUTSIDE DRY BULB TEMPERATURE: 105°F
 OUTSIDE WET BULB TEMPERATURE: 74°F
 INSIDE DRY BULB TEMPERATURE: 75°F
 INSIDE RELATIVE HUMIDITY: 45-95% (HUMIDISTAT SETTING)

WINTER :
 OUTSIDE DRY BULB TEMPERATURE: 16°F
 LAB INSIDE DRY BULB TEMPERATURE: 70°F

LAB HOOD:
 COMPLIANT: ANSI Z9.5 COMPLIANT
 LAB HOOD OPERATION (SASH STOP): 520 CFM (FACE VELOCITY: 100 FPM | 18" SASH OPENING)

COMMERCIAL ROOM VENTILATOR (CRV) :
 SET POSITION: 9

WALL-MOUNTED HVAC EQUIPMENT SELECTION:

- MANUFACTURER: BARD
- MODEL NUMBER: W30ABDA10MPXXXE
- SPECIFICATIONS: W30AB = 2.5TON, 11EER, D = HOT-GAS-REHEAT DEHUMIDIFICATION, A = 208/240/1, 10 = 10.0 KW HEATER, M = COMMERCIAL VENTILATOR - ON/OFF, P = 2" PLEATED MERV 8 FILTER, X = BEIGE
- SUPPLY GRILLE MODEL NUMBER: SG-3 INCLUDES INDIVIDUALLY ADJUSTABLE VERTICAL AND HORIZONTAL BLADES. 750 SPACING.

STRUCTURAL DESIGN LOADS:

- APPLICABLE CODES: 2015 INTERNATIONAL BUILDING CODE
- RISK CATEGORY: II
 - ROOF LIVE LOAD (LL_r): 30 PSF
 - FLOOR LIVE LOAD (LL_f): 100 PSF
 - GROUND SNOW LOAD (p_g): 30 PSF
 - EXPOSURE FACTOR (C_e): 1.0
 - THERMAL FACTOR (C_t): 1.2
 - SLOPE FACTOR (C_s): 1.0
 - FLAT ROOF SNOW LOAD (p_f): 25.2 PSF
 - DESIGN SNOW DUE TO DRIFTING/SLIDING SNOW: 0 PSF
 - BASIC WIND SPEED AND EXPOSURE: 130 MPH, EXP C
 - CLOSED (GC_{pi}) = +/-0.18
 - EXPOSURE COEFFICIENT (K_z): 0.85 (AT MEAN ROOF HEIGHT)
 - WIND DIRECTIONALITY FACTOR (K_d): 0.85
 - TOPOGRAPHIC FACTOR (K_{zt}): 1.0
 - VELOCITY PRESSURE (q_z): 31.2 PSF
 - SEISMIC DESIGN CATEGORY D (S_s=2.500g; S_i=0.749g)
 - SITE CLASS D
 - ELF ANALYSIS
 - RESPONSE MODIFICATION COEFFICIENT: R = 3.0
 - SEISMIC COEFFICIENT: C_s = 0.333
 - BASE SHEAR: 3.53 KIP

ITEMS TO BE SITE INSTALLED:

- THE FOLLOWING ITEMS ARE TO BE SITE INSTALLED AND SUBJECT TO LOCAL CODE COMPLIANCE:
- FOUNDATION AND CONNECTIONS** - CORNER BLOCKS UTILIZED FOR SITE TIE-DOWN CONNECTIONS. SITE CONTRACTOR IS RESPONSIBLE FOR TIE-DOWN CONNECTION DESIGN AND INSTALLATION.
 - ELECTRICAL** - SINGLE POINT ELECTRICAL SHOWN ON DRAWINGS. SITE CONTRACTOR IS RESPONSIBLE FOR BUILDING ELECTRICAL FEEDERS TO BE INSTALLED FROM SITE UTILITIES.
 - SITE RESTRICTIONS** - SITE CONTRACTOR IS RESPONSIBLE TO ENSURE BARRIER FREE ACCESSIBILITY TO BUILDING.
 - LAB HOOD EXHAUST** - DUE TO SHIPPING RESTRICTIONS, LAB HOOD VENT IS SITE CONTRACTOR'S RESPONSIBILITY. MATERIALS WILL BE SHIPPED LOOSE INSIDE LAB INCLUDING HOOD, WIRE ROPES, AND FASTENING HARDWARE.

THIRD ANGLE PROJECTION SHEET SIZE
 ANSI D

DRAWING DEPICTS BASE CONFIGURATION, SEE INTERIOR SECTIONS SHEETS FOR ADDITIONAL OPTIONS.

THIS DOCUMENT CONTAINS INFORMATION THAT IS CONFIDENTIAL AND PROPRIETARY TO DROPBOX, INC. THIS DOCUMENT IS FURNISHED ON THE UNDERSTANDING THAT THE DOCUMENT AND THE INFORMATION IT CONTAINS WILL NOT BE REPRODUCED OR DISCLOSED TO OTHERS WITHOUT THE WRITTEN CONSENT OF DROPBOX, INC. OR USED FOR ANY PURPOSE OTHER THAN CONDUCTING BUSINESS WITH DROPBOX, INC., AND WILL BE RETURNED AND ALL FURTHER USE DISCONTINUED UPON REQUEST BY DROPBOX, INC. COPYRIGHT DROPBOX, INC. FIRST YEAR COPYRIGHT IS FIRST YEAR INDICATED ON THIS DOCUMENT. ALL RIGHTS RESERVED.

REVISIONS

NO.	DATE	DESCRIPTION	BY
4	3/6/2019	REA	REA
3	9/3/2019	JES	JES
2	9/3/2019	JES	JES
1		REA	REA

SALES UPDATES: REA
 SALES INITIAL RELEASE: REA
 SALES APPROVAL: REA
 MFG. APPROVAL: REA
 O.A.
 SCALE: 3/4" = 1'-0"
 DRAWING #: D19-040-MLBX-0210

CUSTOMER DROPPBOX STANDARDS

PROJECT D19-040

PROJECT MODULAR LAB BASE CONFIGURATIONS

CUSTOMER: DROPPBOX STANDARDS

TOLERANCES ON ALL DIMENSIONS UNLESS OTHERWISE NOTED SHALL BE:
 ONE PLACE DECIMAL ± 0.03
 TWO PLACE DECIMAL ± 0.005
 THREE PLACE DECIMAL ± 0.0005
 ANGULAR ± 1°

FINISHES:
 FINISH ALL JACKING SURFACES AND BREAK ALL SHARP EDGES UNLESS OTHERWISE SPECIFIED.
 THE NUMBER IN THE FINISH SYMBOL IS THE MAXIMUM ACCEPTABLE ROUGHNESS VALUE IN A.A. MICROINCHES.

DROPBOX
 A Portable Solutions Group Company
 CUSTOMIZATION SPECIALISTS FOR SHIPMENT WORLDWIDE