



**FAST FACTS:**

- Remote image post-processing *analysis & reporting services*
- Pay-per-use
- Secure cloud-based image *transfer, review & editing*
- Certified analysts*
- 24/7 responsive support
- Access to market-leading *imaging platforms & software super-users*
- HIPAA Compliant, ISO and *SOC-2 certified*
- Medical Director is Past *President of the Society for Cardiovascular MR*

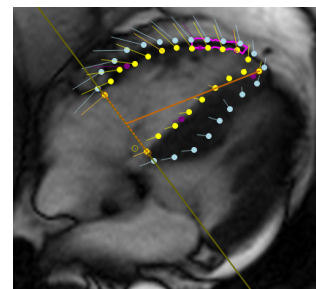
Leave the  
**CMR**  
 Image Post-Processing Analysis  
 to us!

**ANALYSES:**

LV and/or RV function with flows  
 Stress MR

**ADD-ON SERVICES:**

- T2\* cardiac or liver
- T1 or T2 mapping
- Flow analysis
- Strain - feature tracking per chamber or ventricle
- Perfusion analysis (with or without delayed enhancement)
- Custom measurement protocols available



**ABOUT PRECISION IMAGE ANALYSIS (PIA):**

Precision Image Analysis is a world class provider of cloud-based, advanced medical 3D image post-processing and data analysis. PIA serves the global healthcare and research communities through remote image post-processing analysis and reporting services.

The company's solutions offer an excellent opportunity to avoid software and hardware capital expenditures while incorporating advanced image quantification at reduced cost and increased quality with exceptional standardization, reproducibility and turnaround times.