

DEVELOP, DEPLOY, DELIVER HIGH IMPACT, LOW COST TRAINING WITH THE PACELAB WEAVR AND HP EXTENDED REALITY LEARNING SOLUTION



Learn why global brands from aviation, aerospace, automotive, and defense trust Pacelab WEAVR and HP for training excellence

How do you make sure your teams stay on top of their training game when training facilities are packed, and frequent travel is discouraged? And what about the cost of customized learning that fits your business needs? Enter Pacelab WEAVR, paired with HP VR technology, to deliver a scalable extended reality (XR) solution for skill-intensive businesses to build and manage their own, in-house immersive learning environments. PACE is committed to become the market leader in extended reality (XR) solutions for large industrial applications. Creating long-term engagements with leaders like HP enables PACE to leverage complementary expertise and technologies, driving innovation and creating additional business value for customers.



XR delivers advanced, effective learning experiences

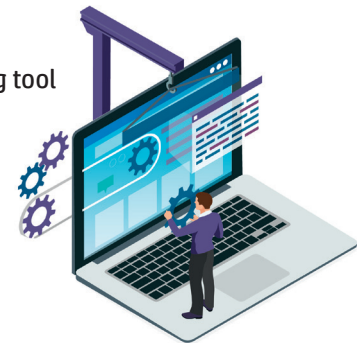
Developed by veteran provider of enterprise solutions PACE, Pacelab WEAVR merges three essential parts of advanced XR learning—virtual reality, augmented reality and mixed reality—into a one-stop software platform for developing, deploying and delivering certification and on-the-job training. It comprises a suite of software tools for fast, simple XR application development for a wide variety of devices. Using Pacelab WEAVR with HP's portfolio of VR-ready products delivers a flexible, portable and scalable solution for immersive virtual training.

Pacelab WEAVR consists of three product modules, which together provide everything needed to implement and manage virtual training:



WEAVR Player
Engaging learner-facing app for easy access and execution of XR training

WEAVR Creator
Intuitive, no-coding authoring tool for XR training content



WEAVR Manager
Manage users, content, collaboration, analytics, and much more...



The Pacelab WEAVR platform works seamlessly with HP's range of VR-ready products to provide a complete one-stop shop for building, managing, and delivering an excellent training solution.

Pacelab WEAVR with HP takes corporate skills development to the next level by:

- Providing a holistic, fully integrated learning platform
- Simplifying complex content, so programming skills are not needed
- Maximizing reusability; build once, use many times
- Enabling multi-mode learning: VR, AR, PC and mobile devices; train alone or in groups, with or without instructor guidance
- Seamlessly integrating with existing learning systems
- Offering scalability and flexibility to meet demand

For the learning experience, Pacelab WEAVR and HP:

- Deliver an ultra-realistic training environment
- Improve learning effectiveness and retention
- Shorten training time and cut costs
- Increase student/worker engagement and enjoyment
- Greatly reduce the need for travel and time away from work

All of this is backed up by a team of XR and learning experts ready to support, customize, and enhance your in-house training solution.



HP REVERB VR HEADSETS

The HP Reverb VR headset is uniquely suited to the design environment. Inside-out tracking without external sensors frees designers to work anywhere and removes the need for a dedicated VR area. The HP Reverb VR Headset delivers:

- 2160 x 2160 resolution per eye
- 114-degree field of view
- 90Hz refresh rate
- 4x front-facing camera tracking with an infinite tracking area
- Compatible with SteamVR and WMR



HP VR BACKPACK G2

The wearable, versatile, free-roam VR PC gives learners the freedom to train in almost any environment. The HP VR Backpack offers:

- Super smooth frame rates. Ultra-fast render times. 8th Gen Intel® Core™ i7 processor and NVIDIA RTX™ GPU lets you fly through VR workloads. The power to run HP Reverb VR Headset at its full resolution for staggering optical clarity
- Optimized design to stay comfortable longer, thanks to padded straps, adjustable waist belt, angled mounting plate, hot-swappable batteries and washable harness
- Dock for the full desktop PC experience



HP Z1 TOWER AND OMEN 30L DESKTOP

For 2D/3D design as well as entry VR content creation, upgrade with HP. Create truly immersive experiences with a desktop certified for pro software – the HP Z1 Tower. Or choose the HP Omen 30L Desktop with tempered glass panels, a full-metal frame, and complete RGB control.



HP VR READY ZBOOKS

Extending flexible working, the portable, VR-ready and high-powered range of HP ZBook mobile workstations releases designers from the lab to collaborate on concepts at client sites or even work from home. HP ZBook laptops deliver the latest Intel® processors and NVIDIA® graphics, including the HP ZBook Create Notebook with NVIDIA® GeForce® RTX graphics. Looking for added manageability and ISV certifications? Check out the ZBook Studio with NVIDIA® Quadro® graphics.

To start building your own immersive learning environment now, contact us at info@pacelabweavr.com or visit www.pacelabweavr.com