

HOW TO LOG INTO YOUR GOOGLE ANALYTICS ACCOUNT

FROM PMW

Google Analytics is the best analytics platform for tracking your website performance. It is one of the many free tools that Google provides to help you understand what your site visitors are doing.



PMW

I HAVE GOOGLE ANALYTICS SET UP, HOW DO I ACCESS IT?

There are multiple ways to log in to your Google Analytics account. **If you have already received the email, 'You have been granted access to a Google Analytics account' you can log in here:**

LOGIN TO MY GOOGLE ANALYTICS ACCOUNT

If you have not already, you will be receiving an email directly from Google Analytics - specifically noreply-analytics@google.com. This email will be granting you access to your Google Analytics account. **Please note, you must have a gmail email address in order to be granted access to your Google Analytics.**

Don't forget to check your spam if you have not already received this email! **Please add noreply-analytics@google.com as an email contact** to ensure you will receive your monthly reports.

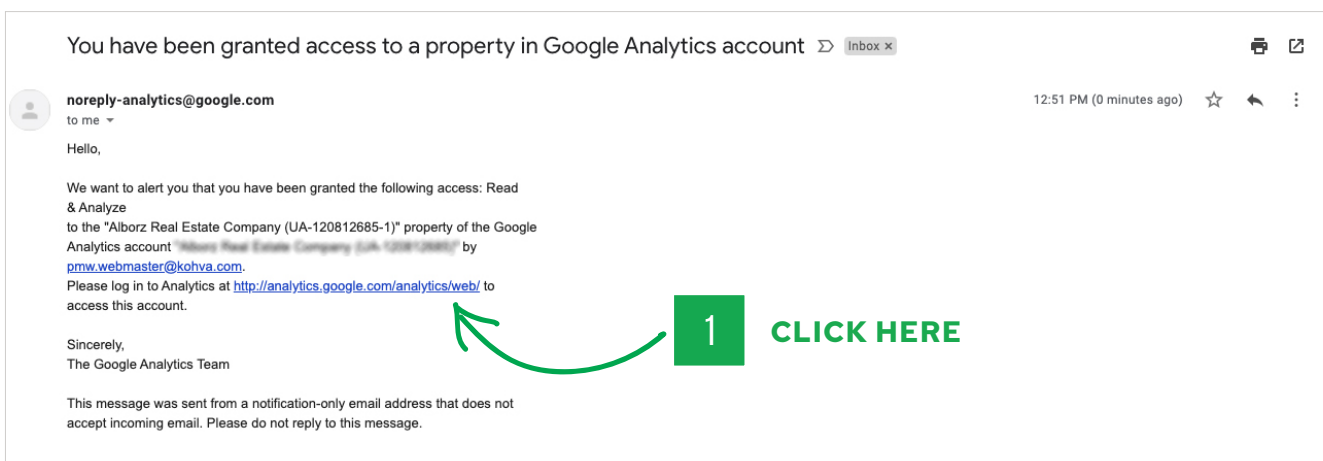
If you already have a Google Analytics account from your previous website, please grant pmw.analytics@kohva.com admin access to your account. **Please do not create an analytics account if you do not already have one!**

01 CLICK THE LINK IN THE EMAIL

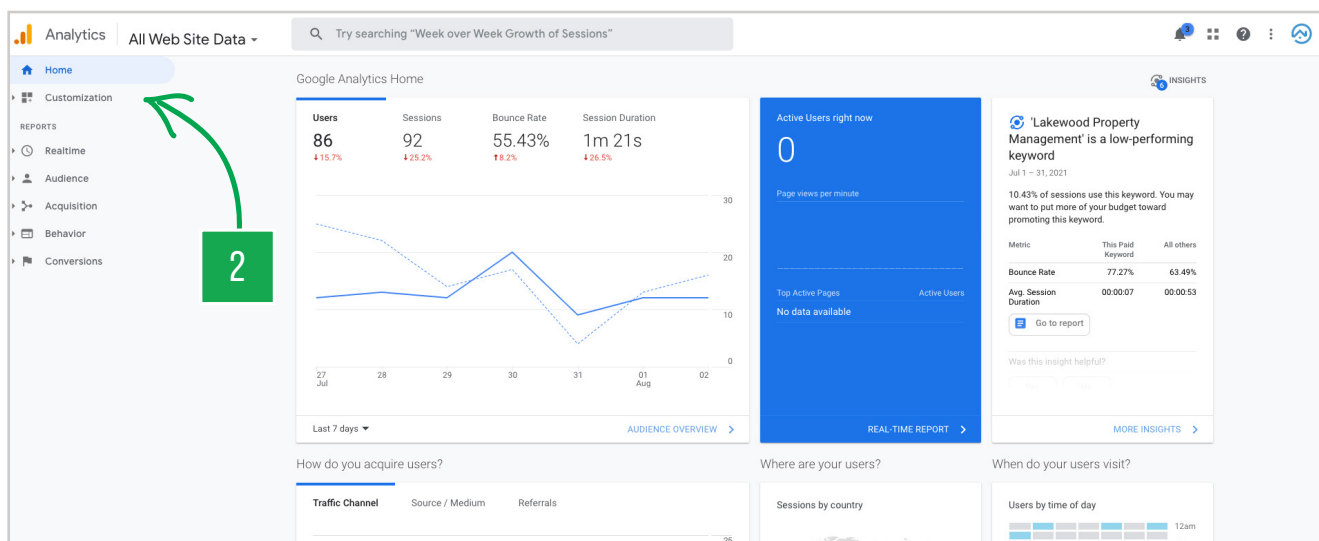
To get started, click the link in the email to access your Google Analytics account.

From here, you will be brought to your Google Analytics account. **We recommend bookmarking this link so you have easy access later on.**

Here is what the email looks like:



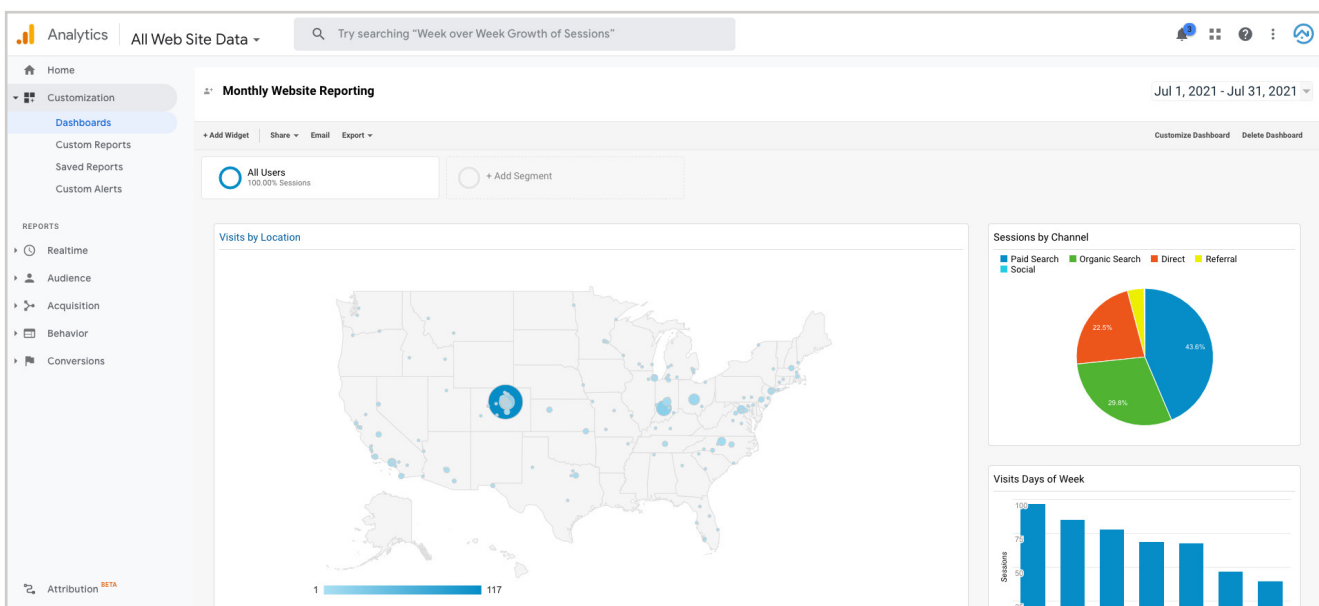
02 YOUR GOOGLE ANALYTICS DASHBOARD WILL LOOK SOMETHING LIKE THIS - CLICK THE CUSTOMIZATION TAB:



From this tab, you will see the Google Ads and/or Website reporting dashboards. **These reports have been put together specifically with the metrics that are important to you as a Property Manager.**

You will receive a monthly Google Analytics report on the first of every month. This report will go over your overall website traffic month over month. Please note, you are not required to have a gmail email address to receive the monthly report. You only have to have a gmail email address to log in to your Google Analytics account.

HOW TO READ MY GOOGLE ANALYTICS REPORT





If you have any questions accessing
your Google Analytics Account or
need help granting PMW access,
please contact customer support!

support@propertymanagerwebsites.com