

LET'S MAKE
ROOM FOR
PEOPLE



MADE IN DENMARK

Elegant bathroom products for
seniors, specialist disability
accommodation (SDA) and
Changing Places

 PRESSALIT®

ABOUT PRESSALIT

We usually make decisions to use a particular company because we feel good about them, trust in what they say, and believe that they can provide us with what we need.

If you haven't considered using a Pressalit product before, we hope the following will make you think you should

With 50 years international exposure in aged care, including over 25 years working in the Australian sector, we feel confident that our skill set is well above average. We're constantly seeking a better understanding of topical issues like Dementia and mobility impairment, because this is an expression of our company's desire to be genuinely acquainted with the demands that others need to satisfy, whilst broadening our own knowledge base.

You don't get a positive reputation by doing nothing, so we've got ours from working on over 400 aged care projects around Australia, designed & constructed by the most respected architectural firms and builders who dominate this arena.

We have been making Premium Bathroom Solutions since 1954. All the products we make are inspired by Pressalit's Danish design heritage dating back to 1954, confirming we always deliver solutions that offer form, function and stylish aesthetic appearances. This approach has been endorsed by the numerous European awards we've won on a regular basis for innovation.

Our aim is to supply appropriate product solutions that achieve better outcomes for all. It's part of what we do daily, understanding that all people are different, with varying abilities that continue to change as we move through life. Pressalit always seek to fit their product solutions to the actual person, and not default to a preconceived one size fits all mentality.

Should you have a need to talk with Pressalit directly in Australia, you can email us on au@pressalit.com or phone 0415 425 461.

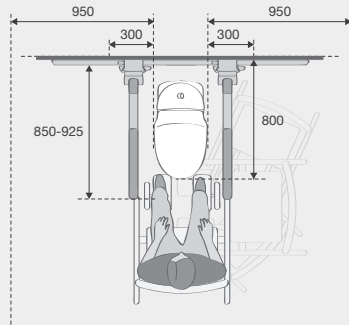
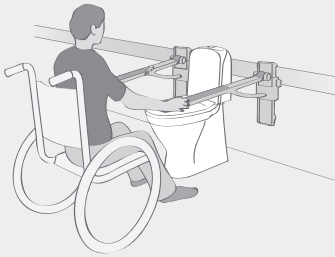


AT THE TOILET

- ❑ 700 - 800 mm from front edge to rear wall.
- ❑ On floor models, it is possible to adjust the seated height by using a raised seat.
- ❑ Wall-hung toilets can be installed at individual heights on walls or mounted on a toilet lifter.
- ❑ Wall-hung toilets allow space for e.g. wheelchair footrests and facilitate cleaning.



Independent user



Space requirements

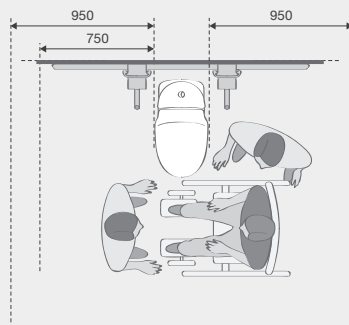
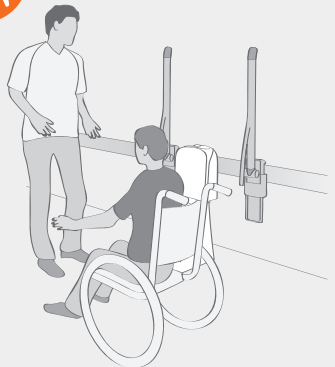
At least 950 mm of free area is required on one side of the toilet – and on both sides if transfers need to be made from both the right and left.

Free area

1500 x 1500 mm in front of the toilet bowl. This allows space for all types of transfers to and from the toilet. Waste and storage baskets and toilet paper should be within easy reach of the user



Dependent user



Space requirements

Min. 950 mm free area on the wheelchair side and 750 mm on the carer's side. If transfers need to take place from both sides, both distances must be min. 950 mm.

Free area

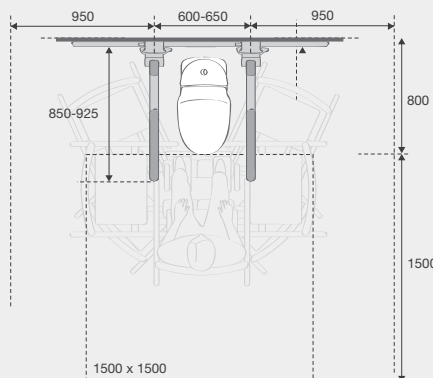
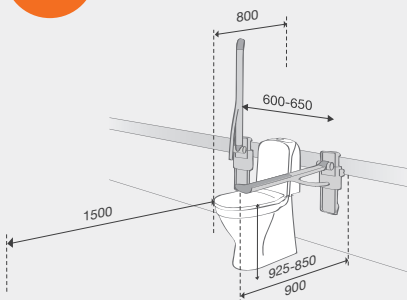
1500 x 1500 mm in front of the toilet bowl. This allows space for all types of transfers to and from the toilet.

A free area allows space for the carer to pass.

Waste and storage baskets and toilet paper should be within easy reach of the user



Space around the toilet



The toilet is one of the stationary fixtures in the bathroom. In planning the layout, it is therefore necessary to take account of the user, carer and any mobility aids.

Support arms, which can be adjusted horizontally and vertically, meet the individual needs of the user.

It can be an advantage to establish functional coherence with other products such as wash basins and shower facilities.

Note: All measurements and layouts are based on a right-handed user. They can be mirrored for left-handed users.



R9874112 PLUS wall track, 400 mm, right-grooved

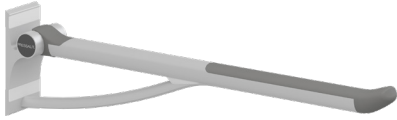


R9862112 PLUS wall track, grooved, 210 mm, right-grooved

SUPPORT ARMS

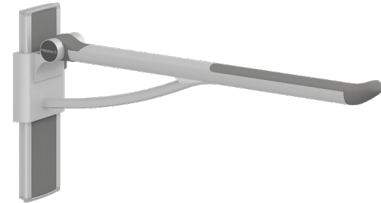
Support arms around the toilet give assistance to sit and stand, enabling users to have a good posture and body balance. The range is a dedicated collection of supportive equipment that has been developed principally for people with limited mobility. Hosting a wide variation in finishes, colour and profile options, there are a multitude of design formats to accommodate an expansive variety of needs.

- Ergonomically shaped to aid user safety and confidence
- Weight load tested from 120kg – 150kg
- Fixed and adjustable height variants of support arm
- Soft close /counterbalanced
- Slip resistant and tactile finishes across all designs
- Simple folding design with no finger traps
- Elegant lines add a design appeal that's hard to beat
- Colour options available to give great visual contrast



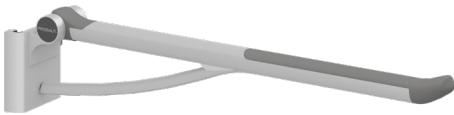
R360085112 Support arm, 850 mm

R360070112 Support arm, 700 mm

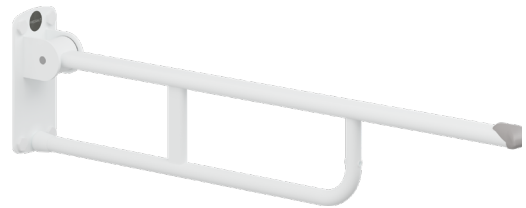


R370485112 Support arm, height adjustable, 850 mm

R370470112 Support arm, height adjustable, 850 mm



R371485112 Support arm, 880 mm



R1100000 Support arm



R1102000 Support arm, fixed height, 800 mm



R1161 VALUE support arm on column, 955 mm



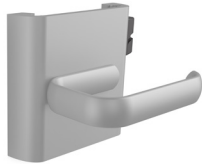
R1170000 Support arm for mounting on toilet



R1190112000 Support arm for mounting on toilet, wider fit

PAPER HOLDERS

These ergonomically designed toilet paper holders are specifically produced to compliment our support arms, vertical wall tracks and toilet mounted arm supports.



R9323

For mounting on vertical PLUS wall track



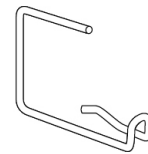
R9321

For mounting underneath support arm



R1151

For mounting underneath VALUE support arms



R1175000

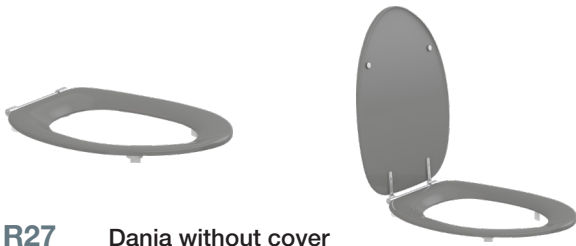
For mounting underneath TMA arm supports



TOILET SEATS

If there is one place we need a stable place to rest during our daily bathroom ritual, it's when we're using the toilet. The key component in this is the actual seat, which can be matched in design to suit our personal demands.

- 2 totally different anatomically contoured designs
- Robust stainless steel hinges and stability buffers hold the seat in place at all times
- Raised height seat options means that you can often retain the existing toilet pan
- Weight load tested from 225kg - 375kg



R27 Dania without cover

R37 Dania with cover



R29 Ergosit without cover

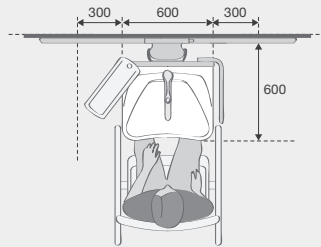
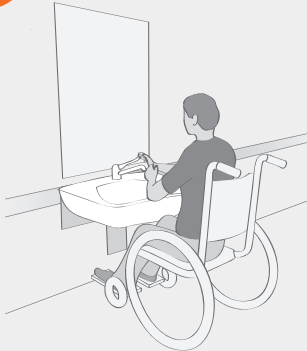


AT THE WASH BASIN

- ❑ The width should be at least 600 mm, and the projection min. 600 from the wall to the front edge.
- ❑ Straight or incurving front edge, recessed plughole and rounded corners.
- ❑ Flat-bottomed to allow unobstructed access under the basin with space for the wheelchair user's legs.
- ❑ As a minimum, it should be heightadjustable.
- ❑ Wash basin with integrated handrails may be useful.



Independent user



Space requirements

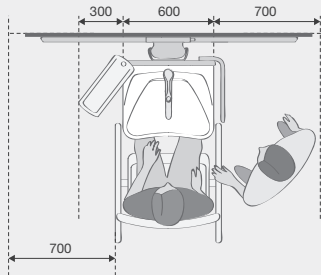
Min. 300 mm on either side of the wash basin.

Free area

1500 x 1500 mm turning circle in front of the wash basin.



Dependent user



Space requirements

Min. 700 mm on the carer's side, but ideally on both sides of the wash basin.

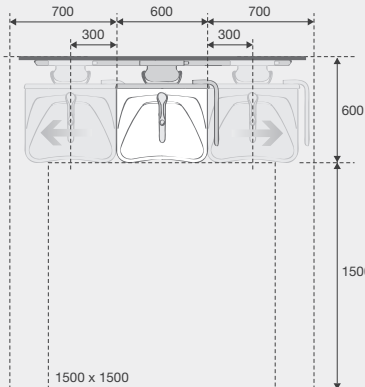
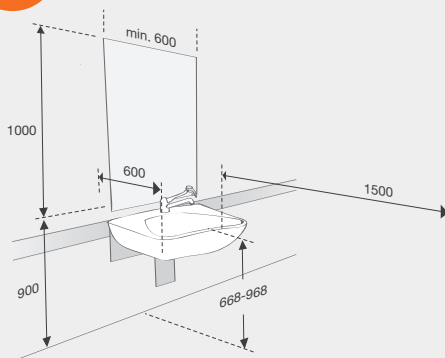
Free area

1500 x 1500 mm turning circle in front of the wash basin.

A free area creates space for the carer to pass.



Space around the wash basin



A wash basin which can be adjusted vertically and horizontally can be positioned in relation to the individual user situation and space requirements.

Bathroom accessories should be placed within reach of the user and the carer, and if possible mounted on the adjustable basin.

Please be aware of factors such as the need to reinforce walls, and placement of flexible feed and waste hoses, electrical installations etc.

WASH BASINS

This wash basin profile with hand holding positioning for convenience, is a dedicated collection hosting a wide variation in sizes and wash basin profile options, there are a multitude of design formats to accommodate an expansive variety of needs.

Hand grips on the leading edge of some designs extend added security to users who may wish to stand when at the wash basin.

Our products are suitable for fixed as well as height adjustable options, plus a shallow depth bowl aids wheelchair access.

- Individual distinctive shapes and sizes on offer
- Attractive integrated leading edge handrail profile
- Weight loading capability of 200kg
- Infection control design with complete high gloss glaze
- Elegant lines give a more non institutional appeal



R2120000 Matrix Medium wash basin, 780x545 mm



R2121000 Matrix Small wash basin w/overflow, 600x490 mm



R2020000 Matrix Small wash basin w/overflow, 600x490 mm



R2021000 Matrix Small wash basin with overflow, 600x490 mm



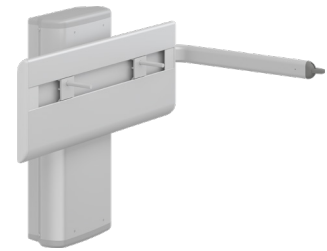
WASH BASIN LIFTERS

Depending on if the wash basin is to be moved frequently or only from time to time, we offer electrical as well as manually operated height adjustable options.

- Weight load tested from 150kg – 200kg
- Can be used in conjunction with Pressalit's own wash basins or any bolt mountable design
- Height adjustability ranges from 200mm – 300mm



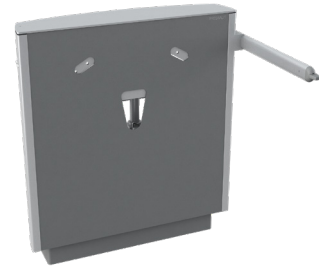
R4750 PLUS wash basin bracket with lever control, electrically height adjustable



R4650 PLUS wash basin bracket with lever control, manually height adjustable with gas cylinder



R4550112 PLUS wash basin bracket with lever control, manually height adjustable



R4950112 SELECT wash basin bracket, wall-mounted w/floor support, electrically height adjustable w/ever control



R2015182 MATRIX supports for wash basin, height adjustable



R2057 SELECT installation cover

IN THE SHOWER AREA

❑ Should as a minimum be height-adjustable.

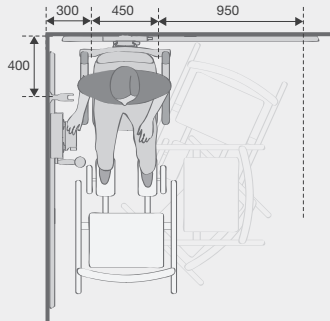
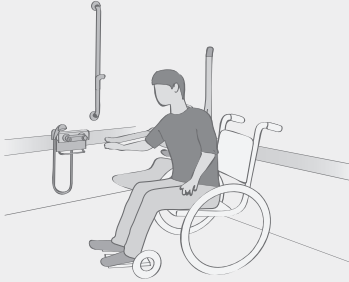
❑ It should be possible to fold it away to create space for standing users.

❑ Comfortable to sit on.

❑ Non-slip surface.



Independent user



Space requirements

Min. 950 mm on the wheelchair side.

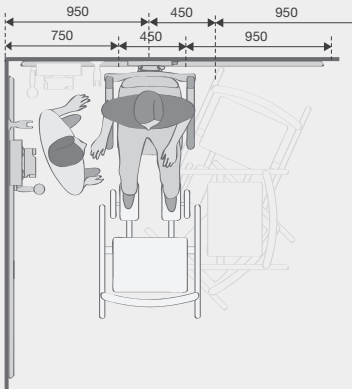
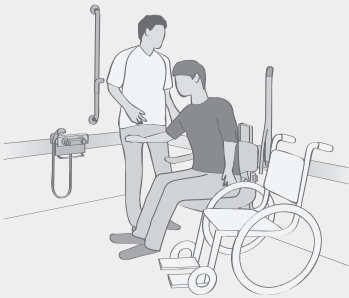
Free area:

1500 x 1500 mm turning circle in front of the shower seat.

Bathroom accessories are placed within reach of the user.



Dependent user



Space requirements

Min. 950 mm on the wheelchair side, 750 mm on the carer's side.

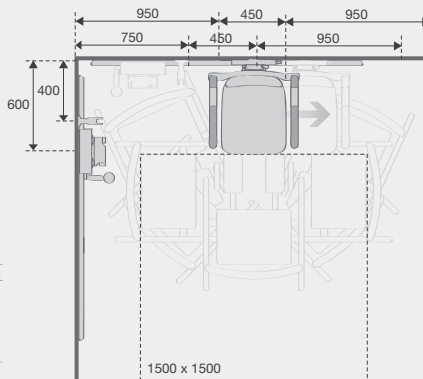
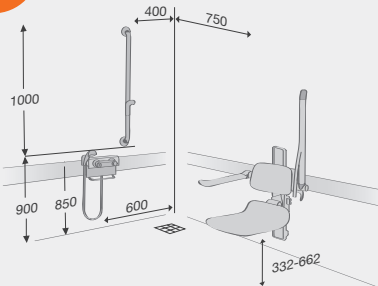
Free area:

1500 x 1500 mm turning circle in front of the shower seat.

A free area creates space for the carer to pass.



Space in the shower area



Moveable shower seat and mixer tap for optimum flexibility.

A long shower hose – 2000 mm – provides considerable freedom of movement.

The floor must be non-slip, must not have any raised or sunken areas, and must have an incline of max. 2°.

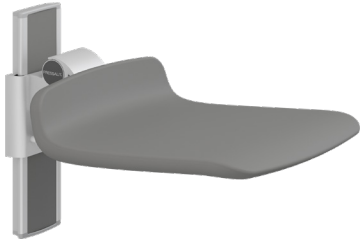
Note: All measurements and layouts are based on a right-handed user. They can be mirrored for left-handed users.

SHOWER SEATS

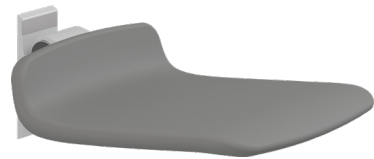
A sense of comfort and feeling secure is paramount when taking a shower, so we ensure that our seating options are large enough to deal with all sizes of adults.

Both good back posture and positive foot contact with the floor of the shower, can be attained throughout the many styles of seat we manufacture.

- Ergonomic platforms for sitting are matched with a variety of surface finishes
- Fold up feature when not in use makes for more space in the shower
- Weight load tested from 125kg - 200kg
- Colour options allow bathroom interior design to be more practical
- Fixed and adjustable height variants available



R7414112 Shower seat 450, manually height adjustable



R7404112 Shower seat 450, fixed height



R7434112 PLUS shower seat 450, manually height adjustable



R7424112 PLUS shower seat 450, manually height adjustable





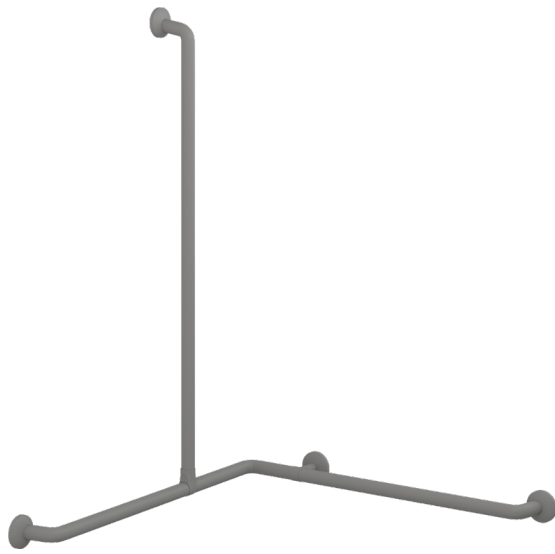
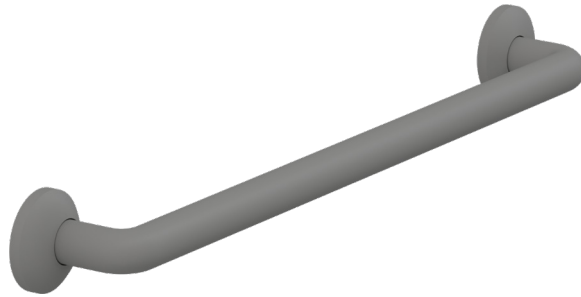
GRAB RAILS

When you desire a more elegant and refined look in a bathroom, our sleek design of handrails is the smart choice

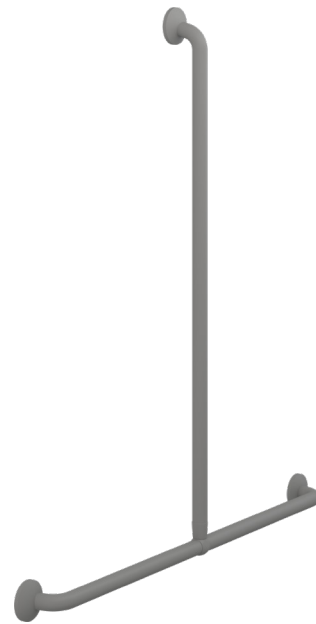
- Comprehensive range, with many lengths and shapes to choose from
- Weight loading capacity of 235 kg

- Smooth to the touch powder coated finish with concealed wall fixings
- 33 mm diameter rail enables it to be held comfortably and firmly
- Colour options that fit well in Dementia designed aged care buildings

- RT100112** PLUS handrail 300 mm
- RT101112** PLUS handrail 450 mm
- RT102112** PLUS handrail 600 mm
- RT103112** PLUS handrail 800 mm
- RT104112** PLUS handrail 1000 mm



RT138112 PLUS handrail corner with vertical grip
762 x 1200 x 1090 mm



RT144112 PLUS handrail combination for shower, 1000 x 1090 mm



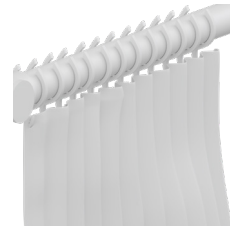
RT600112 Shower head holder

SHOWER RAILS AND CURTAINS

Our shower rails are made from a heavy duty aluminium tube that is lacquer coated, matched with weighted polyester shower curtains, which are machine washable. Both options of shower curtain rails can be cut down and reduce on site if required.



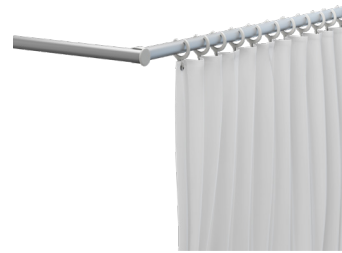
RT212112 Shower curtain rail, 1200 x 1200 mm



RT202000 Shower curtain 1500 mm x 2000 mm, 2 pcs



RT205000 Shower curtain 1800 mm x 2000 mm, 2 pcs



RT225 Shower curtain rail 1530x1530 mm



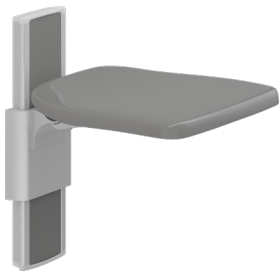
FOLDING SEATS AND CHANGE TABLES

When you need a place to sit and get dressed, our foldable fixed as well as adjustable height seats can be a great addition to the home.

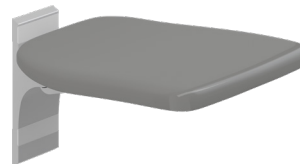
For either a Changing Places or Accessible Adult Change facility, we have the perfect change table options to suit different applications.

- Vertically height adjustable over a range of 700mm
- Weight loading capacity of 200kg

- Options for changing only or a combination of showering and changing
- Can be folded up against the wall to create better wheelchair circulation space
- Contoured or flat profiles of bench are available to match different requirements (i.e. showering or changing only)
- 3 year warranty



R5520112112 PLUS folding seat, manually height adjustable



R5510112 PLUS folding seat, fixed height



R8572313301 SCT 3000 shower change table, electrically height adjustable



R8574572000 CT 4000 change table, manually foldable, electrically height adjustable





Pressalit A/S

Pressalitvej 1
 DK-8680 Ry
 T +45 8788 8788
 F +45 8788 8789
 E pressalit@pressalit.com

Pressalit Pty Ltd

t: 0415 425 461
 e: au@pressalit.com

As much as we've focussed this brochure on bathrooms, Pressalit also produce adjustable height kitchen systems for benchtop and wall cabinets. We have a large selection of possibilities that will satisfy any outcome you could imagine.

PRESSALIT SUPPORTS UNITED NATIONS GLOBAL GOALS

