

Salon Clean Air Action Plan

Introduction

For your clients and employees, air quality in your salon is more important than ever before. We're all aware of the risk that exposure to airborne contaminants, pathogens, microorganisms, and viruses pose to all of us.

For you as a salon owner not taking action to ensure your air is clean and the environment is safe can damage your business. Dissatisfied customers will go to your competitors and your staff will be unhappy.

With this action plan, you can ensure you are putting in place the right processes and systems to ensure your salon is filled with clean air and happy clients, & healthy staff.



Nick Cardarella, CEO

The Danger Zones



The Breathing Zone

The first risk zone in your salon is the source of the contaminants. Your workstations will produce dust, vapors, and other contaminants that are easily dispersed around your salon. Even worse - viruses, pathogens, and bacteria hitch "rides" on this dust and can be inhaled causing a host of health issues.

Taking steps to ensure you protect your air quality at the source will make a huge difference.



The Room Zone

20-25% of dust, vapors, and odors will not be caught by the source capture systems, because of various levels of crosswind (open window or door, blowing fan, etc.) so it's vital you protect the rest of the room space with a room air purifier.

Ensuring your room has clean air will make everyone feel more comfortable and safe.



The Building Zone

The building should not be overlooked when considering air purification systems. Ventilation draws air from all around your salon and it then moves from one room to another. This can have a dramatic impact on your air quality throughout your building, including other businesses connected through your ventilation system.

When you protect the building, you ensure all areas of your salon and surrounding businesses have great air quality.

Protection at the Breathing Zone

Your workstations are the source for the majority of vapors, dust, and particulates in the air. Whilst some of the debris created will simply fall to the table, much more is sent into the air around the workstation and steadily spreads around the room.

Best practice advice: install a source extraction system to capture contaminants as they are created.



Here are some practical actions you can take right now to protect your air quality at the source.

- Don't leave windows and doors open - crosswinds will push contaminants around the room.
- Use trash cans with self-opening lids - cotton swabs and chemical waste still release vapors even after disposal.
- Use a dappen dish with a small opening and cover it when not in use.
- Keep all product containers tightly closed when not in use.
- Thorough sanitizing of the workstation - clean down after every customer and sanitize.
- Use the right masks - NIOSH approved face masks remove dust and vapors, paper masks do not!
- Install suitable filtration & ventilation at the workstation.
- Source Capture System filters should contain an activated carbon filter with a minimum of 2 lbs. of activated carbon.
- Regularly clean and change any filters in line with manufacturer advice.



Protection in the room

The room that contains your workstations is unsurprisingly the next hardest-hit area of your salon, with the natural movement of employees and clients adding to disturbances in the air that pull dust and vapors away from the source.

Best practice advice: install a room air purifier to pull particulates and harmful substances from a wider area.

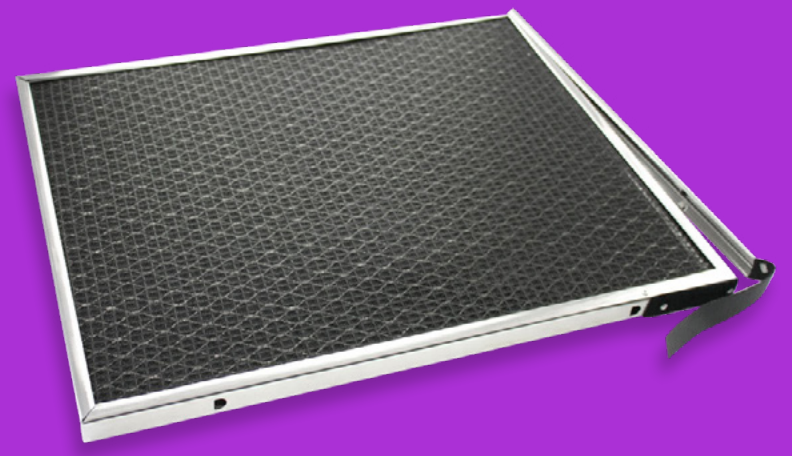
Here are some practical actions you can take right now to protect the air quality in your room.

- Ensure cleaning practices cover the room.
- Partitioning for stations can reduce the spread of airborne substances.
- Install suitable filtration & ventilation for the room size.
- Avoid using ozone-generating air-cleaning devices.
- Use professional HEPA room air cleaners; avoid devices designed for home use and only use air cleaners in conjunction with a source capture system.
- Regularly clean and change any filters in line with manufacturer advice.

Protecting the building

Your building will have ventilation throughout to allow clean air to circulate. That also means any airborne contaminants can easily spread into your breakout areas, storage, or neighbor's facilities.

Best practice advice: install appropriate filters into the building's current ventilation system.



Here are some practical actions you can take right now to protect the air quality in your building:

- Salons should have their own ventilation systems and avoid sharing with adjacent businesses.
- Turn on all general ventilation systems (HVAC) during work hours
- Equip each room with suitable ventilation.
- Keep doors closed in non-work areas.
- Implement a sanitation schedule.
- Regularly clean and change any filters in line with manufacturer advice.

BOOK YOUR FREE CLEAN AIR CONSULTATION!

Aerovex has helped over 14,000 salons across the country improve their air quality by tackling the challenges of the three danger zones: Source, room, and building. Our team is up to date on the latest industry standards and regulations and ready to help you become clean air certified.

[Arrange your FREE Clean Air Consultation today.](#)

