

Lyra

Bearing

Our know-how, your brand
Private Label for timing chain kits

The Company



1987

Trevi Cuscinetti was born from the idea of 3 members



2008

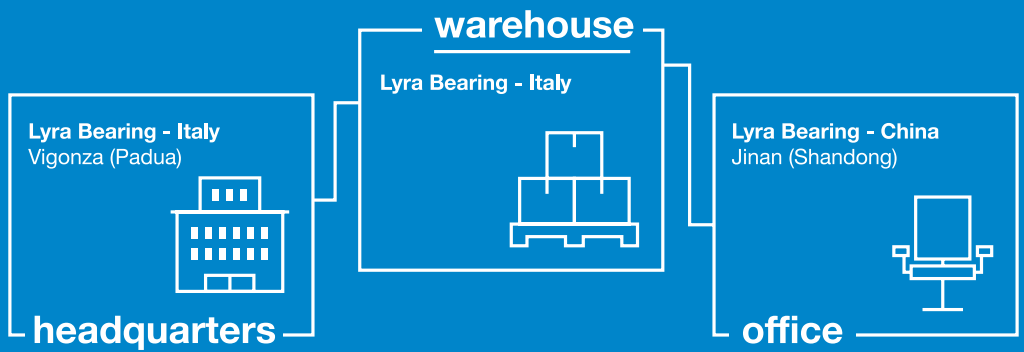
It became **Trevi Group S.p.A.**



2014

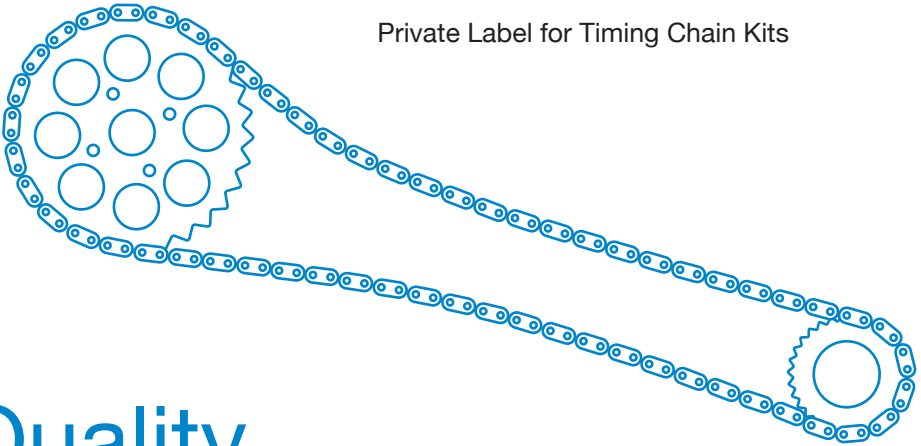
Lyra Bearing acquired the brands of Trevi Group – Trevi Automotive and Industry

Headquarters and Offices



Private Label

Private Label for Timing Chain Kits



Quality

Certification



— QUALITY MANAGEMENT CERTIFICATIONS

Lyra Bearing is ISO 9001 certified.



— PRODUCTION CERTIFICATION

All our production partners are ISO/TS 16949 production.

— MANUFACTURING QUALITY CONTROL REPORTS

Checks and tests are provided for each manufacturing batch.



— PPAP

We provide the PPAP for all the components we supply.



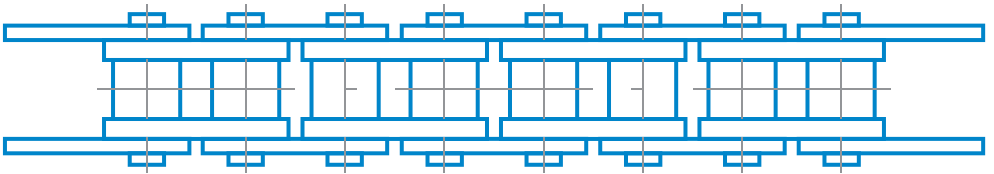
— EXTERNAL QUALITY CONTROLS

For critical components we perform strict quality controls through a certified third-party laboratory.

— AUDIT TO PRODUCTION PARTNERS

Our customers can carry out auditing inspections directly at manufacturing plants.

Technical drawings of components

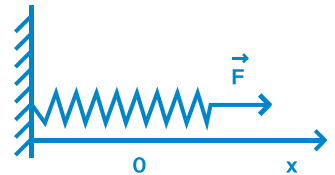


- **OE Interchangeability**
- **All critical dimensions with tolerances**
- **List of components and related materials**
- **Marking area, font and size**
- **Component weight**

PPAP

- Production Part Submission Warrant
- Dimensional results
- Material, Performance Test results
- Process flow charts Control plan
- Process FMEA
- Process capability studies:
For all significant parameters with a minimum Cp and Cpk of 1.33
- Measurement system studies (R&R study)
- Initial samples manufactured under serial condition

Test Report

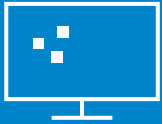


Tensile test of the chain

Dynamic test:
Elongation test of the chain compared to the OE (200/500h)

Test of the force exerted by the tensioner spring compared to the OE

Marking e Packaging



PACKAGING GRAPHIC DESIGN



DIE-MAKING
Wide range of cutting dies available for product lines



BOX PRINTING
Production and storage packaging



ASSEMBLING
Kit assembly according to specifications



LASER MARKING
Batch number and customer logo



PRODUCT BAGS
Sourcing and storage of your product bags



LABELLING
Label printing according to customer specification and product labelling



PACKAGING
Packaging according to customer instructions



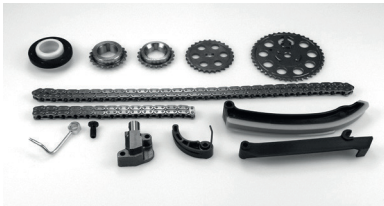
DELIVERY
Delivery to customer's warehouses

Beyond the product



– INFORMATION FOR TEC DOC

Sensitive data for TecDoc (for instance K-type) can be supplied in Excel format.



– PRODUCT VISUALS

Pictures can be taken according to Customer specifications (dpi, sizes, product positioning).



– KIT COMPOSITION

Kit composition can be made according to Customer specifications (parts quantity, bolts, screws, accessories etc).



Lyra Bearing srl

Headquarters and logistic warehouse:

Via Inghilterra, 4

35010 Peraga di Vigonza (PD)

Phone: 049 8952907

P.Iva 04813910280

©2020 Lyra Bearing tutti i diritti riservati

Graphic design: Grazia Dammacco | www.graziadammacco.eu