

# THE LINCOLN ACADEMY

## KEY STATS

### KEY INSTALLATIONS

Prefabricated Cold-formed Steel Panels  
Window Blocking  
Steel Brick Relief Angles

### LOCATION

Beloit, WI

### COMPLETION DATE

In Construction

### SIZE

112,000sf  
3 stories / 45,000 sf of wall-panels

### ARCHITECT

EUA Architects

### CUSTOMER

Kids First Beloit, Inc.

The Lincoln Academy will be a 112,000 sf, K-12 public charter school, set to open in 2021. The school will serve as one of the state's premier college preparatory schools committed to an equitable environment, rigorous curriculum, and community.

The General Contractor of Kids First Beloit needed assistance meeting the schedule deadline. Wall-tech was contacted to speed up the completion of this school project using prefabricated wall panels. All 150 cold-formed steel (CFS) wall panels were manufactured and assembled in the Wall-tech factory, which were then delivered and erected on-site.

### BIGGEST CHALLENGE

The client is short 3 months on the overall construction schedule, suggesting they possibly flood the project with manpower and work overtime.

### BEST SOLUTION

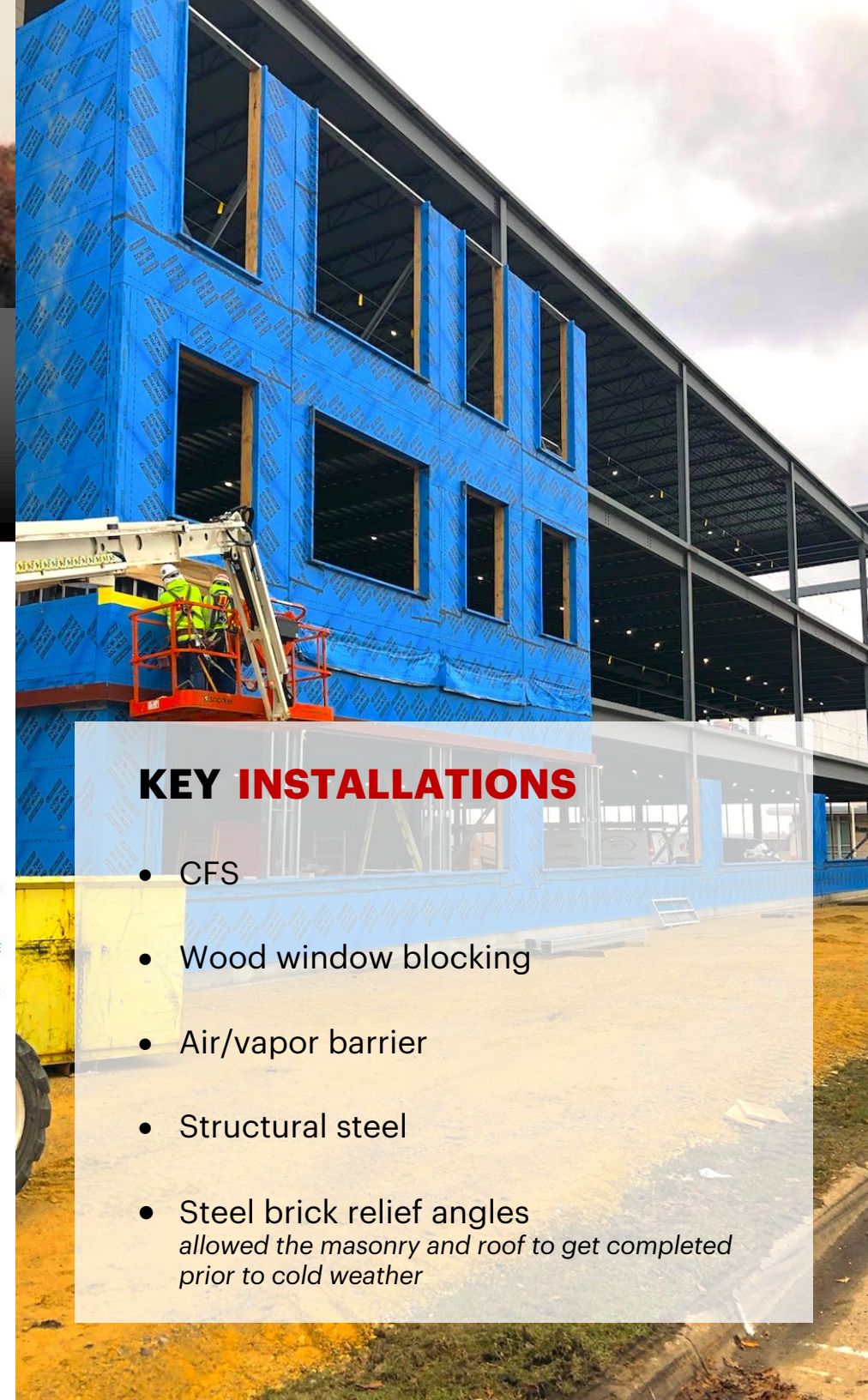
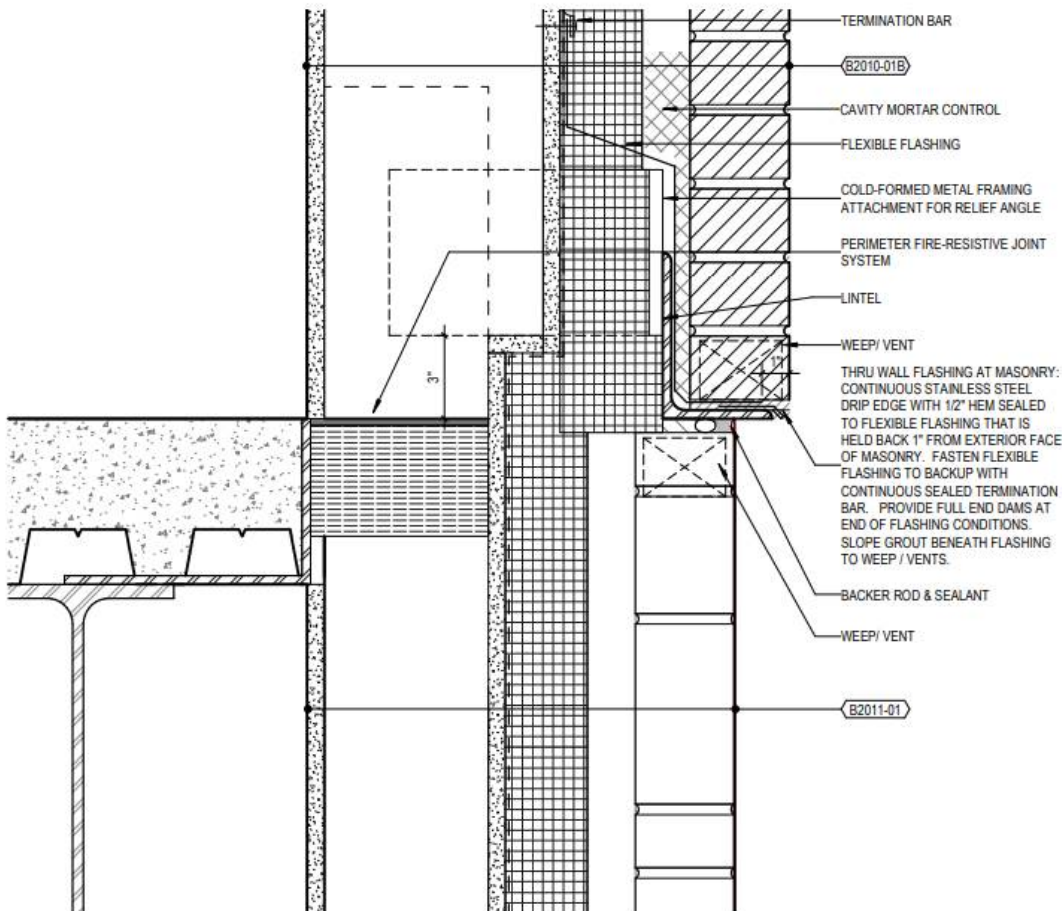
Wall-tech uses CFS prefabrication as much as possible on the exterior framing to get the trades started on the interior work 7 weeks early.

# BENEFITS OF **CFS** PANELING

COST SAVINGS

SCHEDULE TIME CUT IN HALF

SAFER AND MORE EFFICIENT



## KEY INSTALLATIONS

- CFS
- Wood window blocking
- Air/vapor barrier
- Structural steel
- Steel brick relief angles  
*allowed the masonry and roof to get completed  
prior to cold weather*