


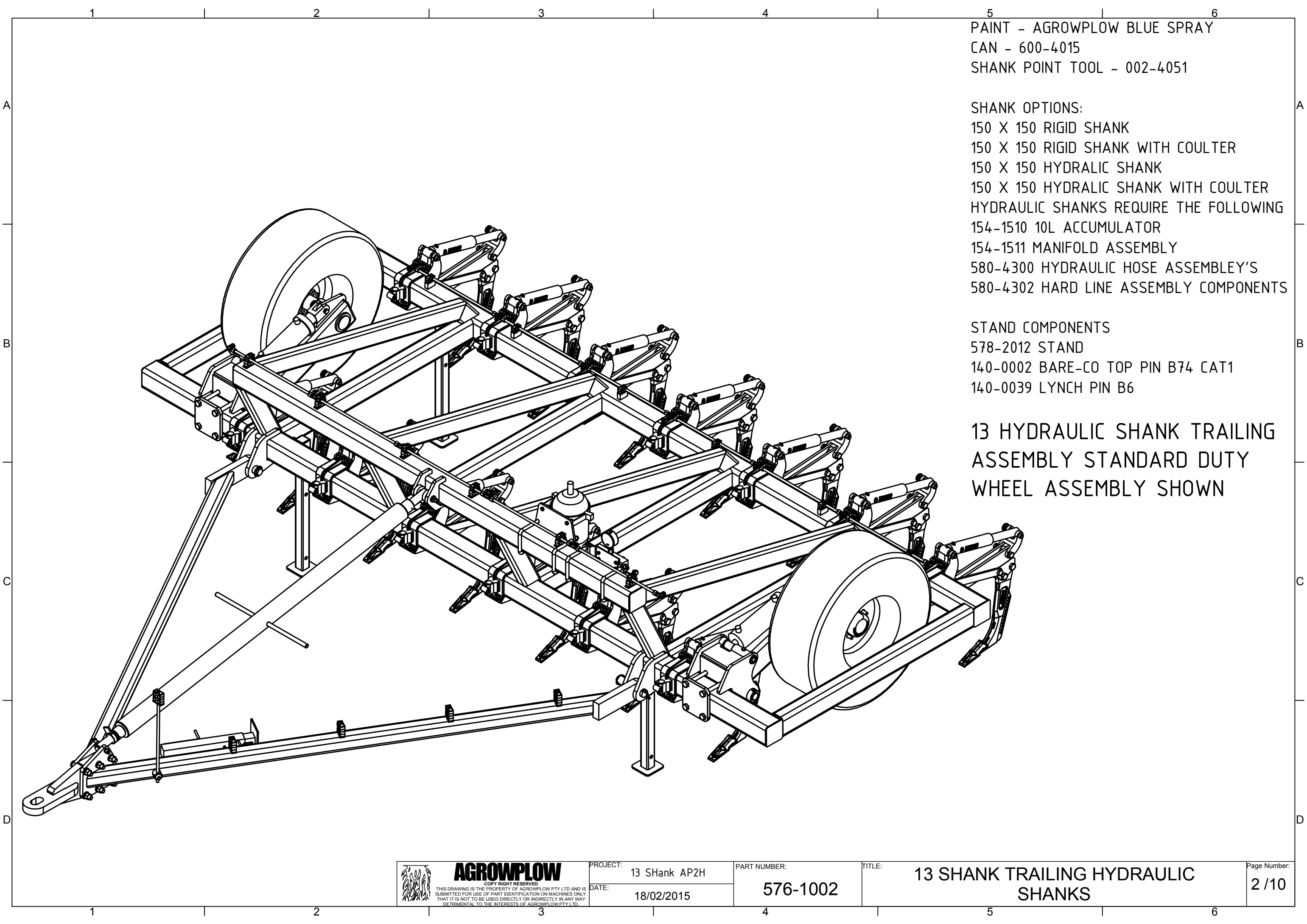
PAINT - AGROWFLOW BLUE SPRAY  
 CAN - 600-4015  
 SHANK POINT TOOL - 002-4051

SHANK OPTIONS:  
 150 X 150 RIGID SHANK  
 150 X 150 RIGID SHANK WITH COULTER  
 150 X 150 HYDRALIC SHANK  
 150 X 150 HYDRALIC SHANK WITH COULTER  
 HYDRALIC SHANKS REQUIRE THE FOLLOWING  
 154-1510 10L ACCUMULATOR  
 154-1511 MANIFOLD ASSEMBLY  
 580-4300 HYDRALIC HOSE ASSEMBLY'S  
 580-4302 HARD LINE ASSEMBLY COMPONENTS

STAND COMPONENTS  
 578-2012 STAND  
 140-0002 BARE-CO TOP PIN B74 CAT1  
 140-0039 LYNCH PIN B6

17 HYDRALIC SHANK TRAILING  
 ASSEMBLY HEAVY DUTY  
 WHEEL ASSEMBLY SHOWN

 <b>AGROWFLOW</b> <small>COPY RIGHT RESERVED          THIS DRAWING IS THE PROPERTY OF AGROWFLOW PTY LTD AND IS          SUBMITTED FOR USE OF PART IDENTIFICATION ON MACHINES ONLY.          THAT IT IS NOT TO BE USED DIRECTLY OR INDIRECTLY IN ANY WAY          DETRIMENTAL TO THE INTERESTS OF AGROWFLOW PTY LTD.</small>	PROJECT:	AP 70	PART NUMBER:	578-1002	TITLE:	17 SHANK TRAILING HYDRALIC SHANKS	Page Number: 1 / 10
	DATE:	18/02/2015					

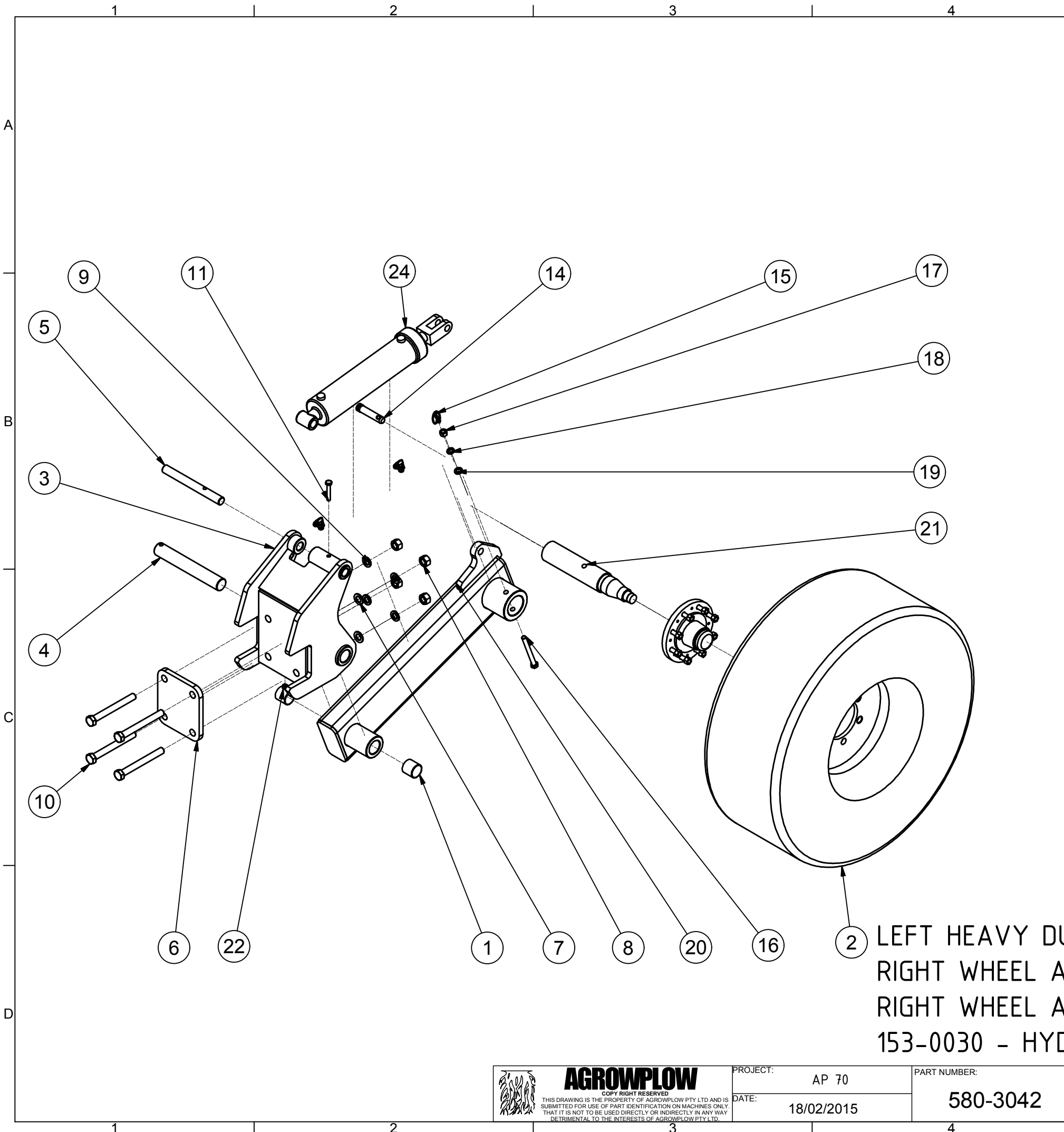


PAINT - AGROWFLOW BLUE SPRAY  
CAN - 600-4015  
SHANK POINT TOOL - 002-4051

SHANK OPTIONS:  
150 X 150 RIGID SHANK  
150 X 150 RIGID SHANK WITH COULTER  
150 X 150 HYDRALIC SHANK  
150 X 150 HYDRALIC SHANK WITH COULTER  
HYDRAULIC SHANKS REQUIRE THE FOLLOWING  
154-1510 10L ACCUMULATOR  
154-1511 MANIFOLD ASSEMBLY  
580-4300 HYDRAULIC HOSE ASSEMBLY'S  
580-4302 HARD LINE ASSEMBLY COMPONENTS

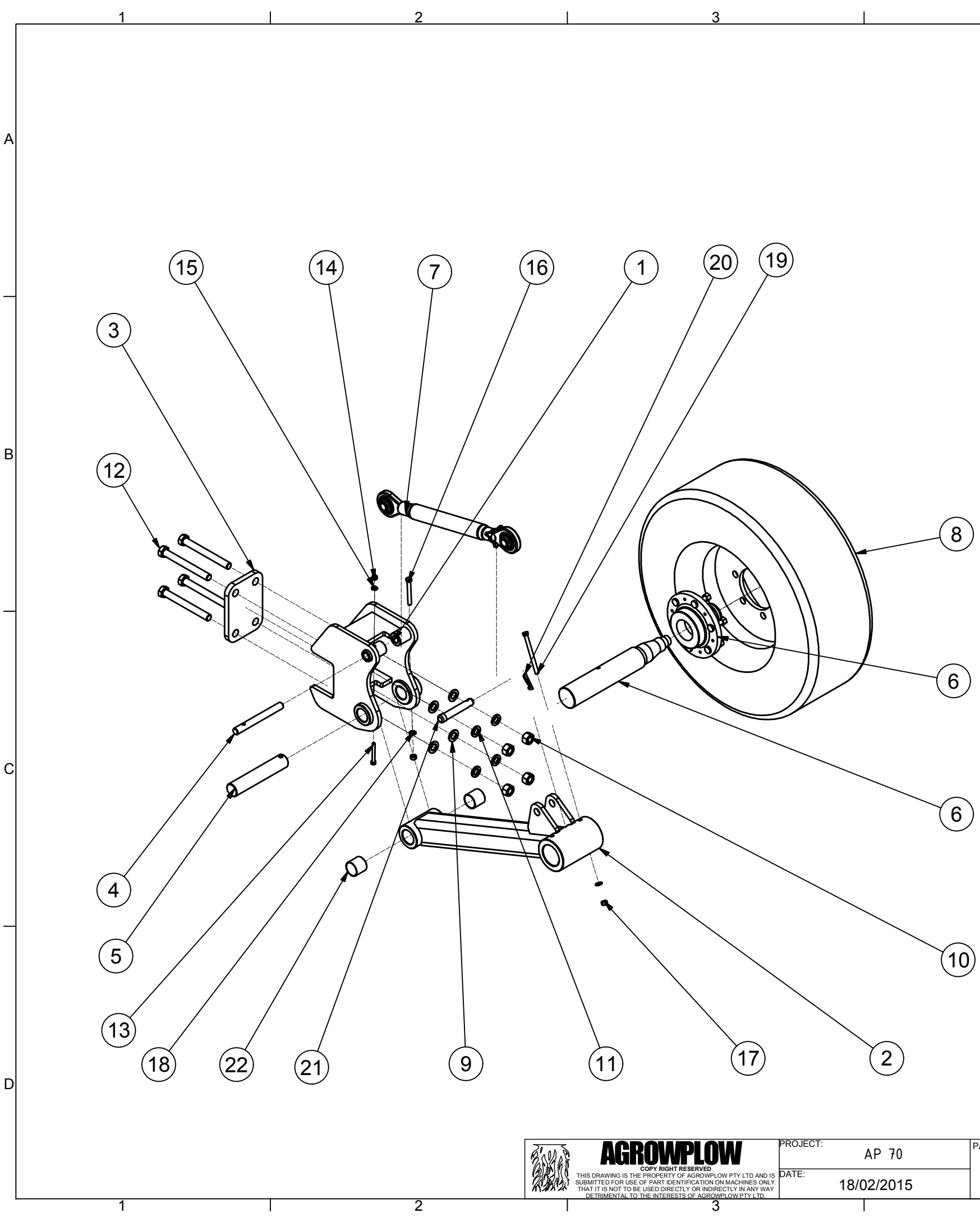
STAND COMPONENTS  
578-2012 STAND  
140-0002 BARE-CO TOP PIN B74 CAT1  
140-0039 LYNCH PIN B6

13 HYDRAULIC SHANK TRAILING  
ASSEMBLY STANDARD DUTY  
WHEEL ASSEMBLY SHOWN

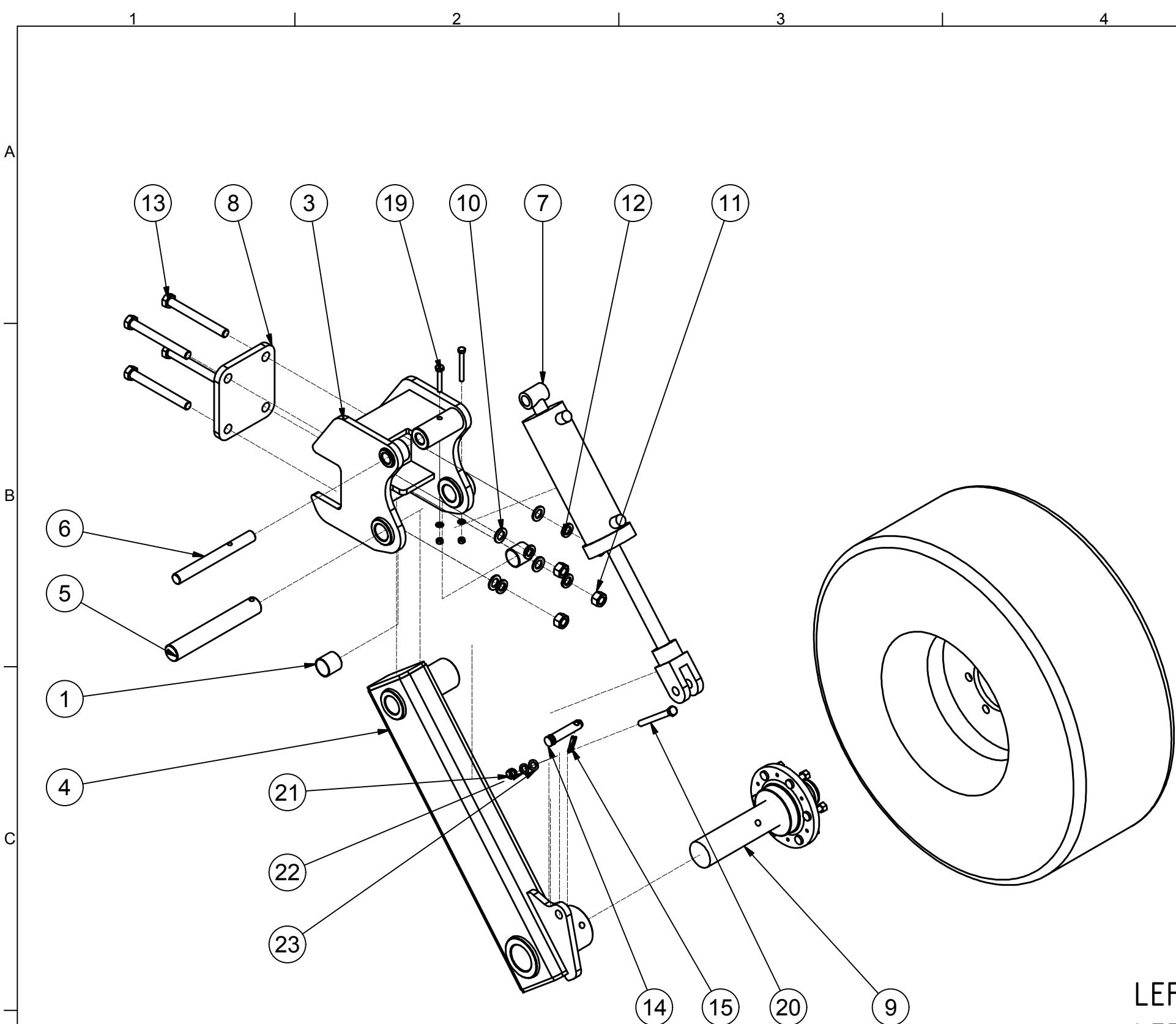


Parts List			
ITEM	PART NUMBER	TITLE	QTY
1	580-4028	IGUS 5055-50	2
2	139-2068	385/65-22.5 16PR HARVAST HB46 TYRE AND 11.75-22.5 8/275 0 OFFSET RIM	1
3	580-3045	RIGHT WHEEL ARM CARRIER ASSEMBLY	1
4	580-4033	WHEEL ARM PIVOT PIN	1
5	580-4063	HYDRAULIC PIVOT PIN	1
6	580-4032	WHEEL ASSEMBLY FIXING PLATE	1
7	135-3023	M24 FLAT WASHER GALV	4
8	134-4043	M24 STEEL HEX NUT	4
9	135-3042	M24 SPRING WASHER	4
10	133-4108	M24 X 220 BOLT	4
11	133-4103	M12 X 75 BOLT	1
12	135-3012	M12 MILD STEEL WASHER	2
13	133-4109	M12 X 100 BOLT	1
14	140-4041	PIN B76	1
15	140-0039	LYNCH PIN B6	1
16	133-4105	M16 X 160 BOLT	1
17	134-4022	M16 STEEL NUT	1
18	135-3036	M16 SPRING WASHER	1
19	135-3037	FLAT WASHER 16mm	1
20	580-3044	LEFT WHEEL ARM ASSEMBLY	1
21	139-2021D	80 STUB AXLE ASSY 8 STUD	1
22	134-4017	M12 Hex Nut	2
23	154-4070	ELBOW S91-1212	2
24	153-0029	HYDRAULIC CYLINDER 4.5" X 16"	1

LEFT HEAVY DUTY WHEEL ARM ASSEMBLY 580-3043 WITH  
 RIGHT WHEEL ARM CARRIER 580-3040  
 RIGHT WHEEL ARM 580-3041  
 153-0030 - HYDRAULIC CYLINDER 4.25 X 16"



Parts List			
ITEM	PART NUMBER	TITLE	QTY
1	580-3030	DEPTH WHEEL MAIN CARRIER ASSEMBLY	1
2	580-3026	DEPTH WHEEL ARM ASSEMBLY	1
3	580-4053	WHEEL ASSEMBLY FIXING PLATE	1
4	580-4056	TOP LINK FIXING PIN	1
5	580-4057	DEPTH WHEEL ARM ASSEMBLY PIN	1
6	139-2021C	AXLE AND HUB_ STUB C	1
7	142-4021A	BARE Co. JUMBO TOP LINK B2660	1
8	139-3121	TYRE 385 / 65-22.5 16 PR	1
9	135-3023	M24 FLAT WASHER GALV	4
10	134-4043	M24 STEEL HEX NUT	4
11	135-3042	M24 SPRING WASHER	4
12	133-4108	M24 X 220 BOLT	4
13	133-4053	M10 X 80 BOLT	1
14	134-0050	M10 NYLOCK NUT	1
15	134-0057	FLAT WASHER M10	1
16	133-4109	M12 X 100 BOLT	1
17	134-4017	M12 Hex Nut	2
18	135-3012	M12 MILD STEEL WASHER	2
19	133-4107	M12 x 150 BOLT	1
20	140-0041	Lynch Pin B2700	1
21	140-0004	PIN TOP CYLINDER B81	1
22	580-4028	IGUS 5055-50	2

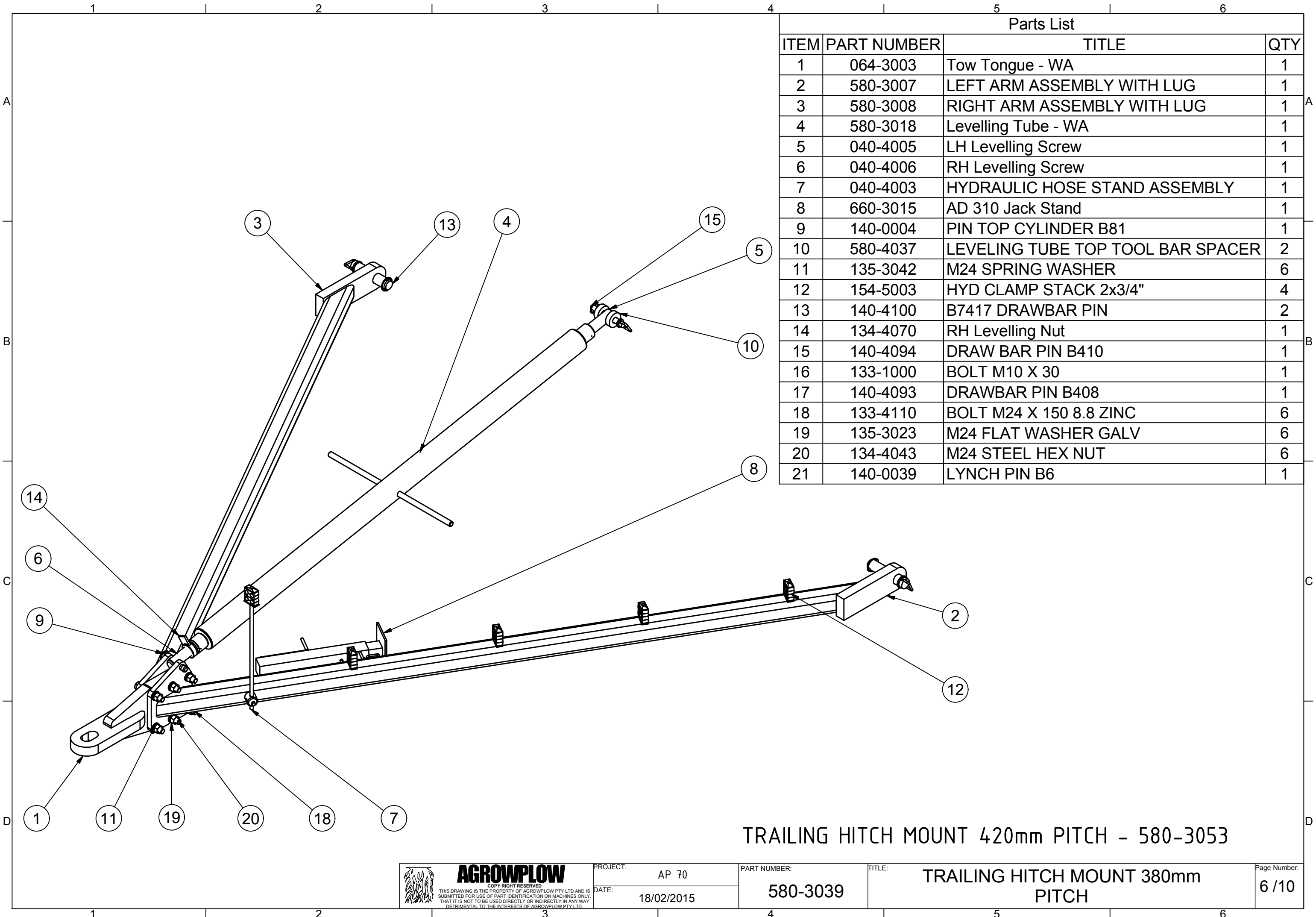


Parts List			
ITEM	PART NUMBER	TITLE	QTY
1	580-4028	IGUS 5055-50	2
2	139-2068	385/65-22.5 16PR HARVAST HB46 TYRE AND 11.75-22.5 8/275 0 OFFSET RIM	1
3	580-3011	RIGHT WHEEL ARM CARRIER ASSEMBLY	1
4	580-3020	RIGHT WHEEL ARM ASSEMBLY	1
5	580-4033	WHEEL ARM PIVOT PIN	1
6	580-4034	HYDRAULIC PIVOT PIN	1
7	153-0024	4.5" x 12" PHASING CYLINDER	1
8	580-4032	WHEEL ASSEMBLY FIXING PLATE	1
9	139-2021B	80 STUB AXLE ASSY	1
10	135-3023	M24 FLAT WASHER GALV	4
11	134-4043	M24 STEEL HEX NUT	4
12	135-3042	M24 SPRING WASHER	4
13	133-4108	M24 X 220 BOLT	4
14	140-4041	PIN B76	1
15	140-0039	LYNCH PIN B6	1
16	134-0050	M10 NYLOCK NUT	2
17	134-0057	FLAT WASHER M10	2
18	133-4109	M12 X 100 BOLT	1
19	133-4103	M12 X 75 BOLT	1
20	133-4105	M16 X 160 BOLT	1
21	134-4022	M16 STEEL NUT	1
22	135-3036	M16 SPRING WASHER	1
23	135-3037	FLAT WASHER 16mm	1

LEFT WHEEL ARM ASSEMBLY 580-3023  
 LEFT WHEEL ARM CARRIER 580-3010  
 LEFT WHEEL ARM 580-3021  
 WITH 153-0025 - HYDRAULIC CYLINDER 4.75 X 12"

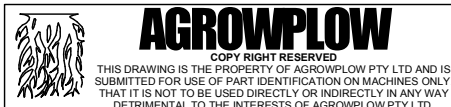
SUPERSEDED  
 NEW MACHINES ARE SUPPLIED WITH HEAVY DUTY WHEEL ARMS

MACHINES WITH STANDARD DUTY WHEEL ARM CAN NOT CARRY  
 A FLEXI ROLLER.



Parts List			
ITEM	PART NUMBER	TITLE	QTY
1	064-3003	Tow Tongue - WA	1
2	580-3007	LEFT ARM ASSEMBLY WITH LUG	1
3	580-3008	RIGHT ARM ASSEMBLY WITH LUG	1
4	580-3018	Levelling Tube - WA	1
5	040-4005	LH Levelling Screw	1
6	040-4006	RH Levelling Screw	1
7	040-4003	HYDRAULIC HOSE STAND ASSEMBLY	1
8	660-3015	AD 310 Jack Stand	1
9	140-0004	PIN TOP CYLINDER B81	1
10	580-4037	LEVELING TUBE TOP TOOL BAR SPACER	2
11	135-3042	M24 SPRING WASHER	6
12	154-5003	HYD CLAMP STACK 2x3/4"	4
13	140-4100	B7417 DRAWBAR PIN	2
14	134-4070	RH Levelling Nut	1
15	140-4094	DRAW BAR PIN B410	1
16	133-1000	BOLT M10 X 30	1
17	140-4093	DRAWBAR PIN B408	1
18	133-4110	BOLT M24 X 150 8.8 ZINC	6
19	135-3023	M24 FLAT WASHER GALV	6
20	134-4043	M24 STEEL HEX NUT	6
21	140-0039	LYNCH PIN B6	1

TRAILING HITCH MOUNT 420mm PITCH - 580-3053

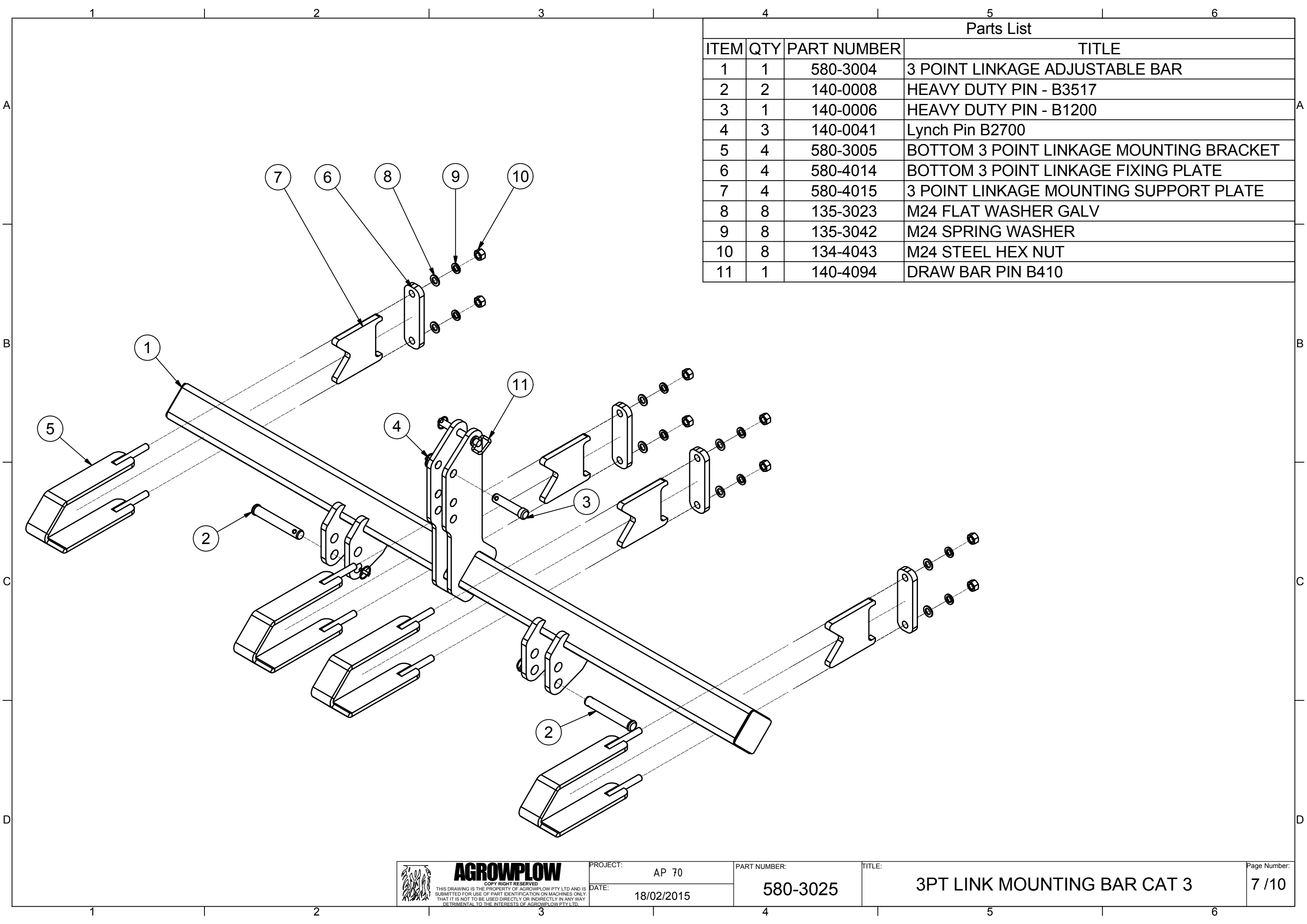


PROJECT: AP 70  
 DATE: 18/02/2015

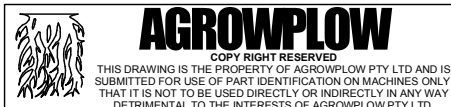
PART NUMBER: 580-3039

TITLE: TRAILING HITCH MOUNT 380mm PITCH

Page Number: 6 / 10



Parts List			
ITEM	QTY	PART NUMBER	TITLE
1	1	580-3004	3 POINT LINKAGE ADJUSTABLE BAR
2	2	140-0008	HEAVY DUTY PIN - B3517
3	1	140-0006	HEAVY DUTY PIN - B1200
4	3	140-0041	Lynch Pin B2700
5	4	580-3005	BOTTOM 3 POINT LINKAGE MOUNTING BRACKET
6	4	580-4014	BOTTOM 3 POINT LINKAGE FIXING PLATE
7	4	580-4015	3 POINT LINKAGE MOUNTING SUPPORT PLATE
8	8	135-3023	M24 FLAT WASHER GALV
9	8	135-3042	M24 SPRING WASHER
10	8	134-4043	M24 STEEL HEX NUT
11	1	140-4094	DRAW BAR PIN B410



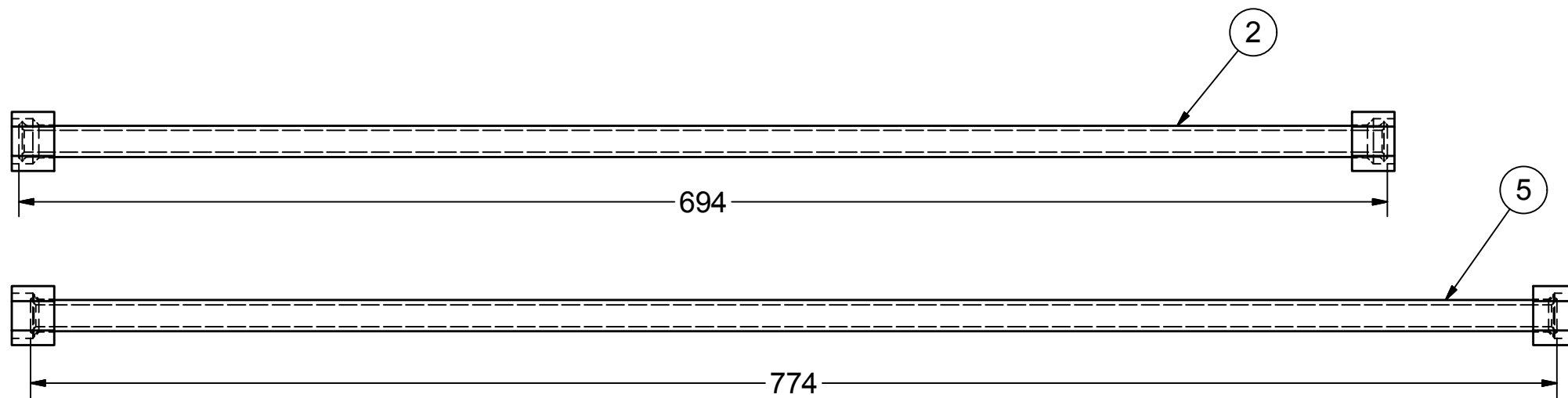
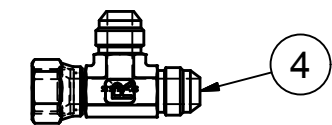
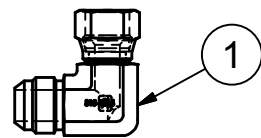
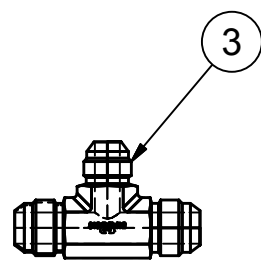
PROJECT: AP 70  
 DATE: 18/02/2015

PART NUMBER: 580-3025

TITLE: 3PT LINK MOUNTING BAR CAT 3

Page Number: 7 / 10

Parts List			
ITEM	QTY	PART NUMBER	TITLE
1	1	154-4079	HYD ELBOW 7/8 TO 3/4 S15-1412
2	1	580-4058	HYD HARD LINE 380mm PITCH 5/8" TUBE
3	1	154-4299	TEE FITTING S19-141412 MMM
4	1	154-4003	TEE FITTING S67-121212
5	1	578-4010	HYD HARD LINE 420mm PITCH 5/8" TUBE



**AGROWFLOW**

COPY RIGHT RESERVED  
THIS DRAWING IS THE PROPERTY OF AGROWFLOW PTY LTD AND IS  
SUBMITTED FOR USE OF PART IDENTIFICATION ON MACHINES ONLY.  
THAT IT IS NOT TO BE USED DIRECTLY OR INDIRECTLY IN ANY WAY  
DETRIMENTAL TO THE INTERESTS OF AGROWFLOW PTY LTD.

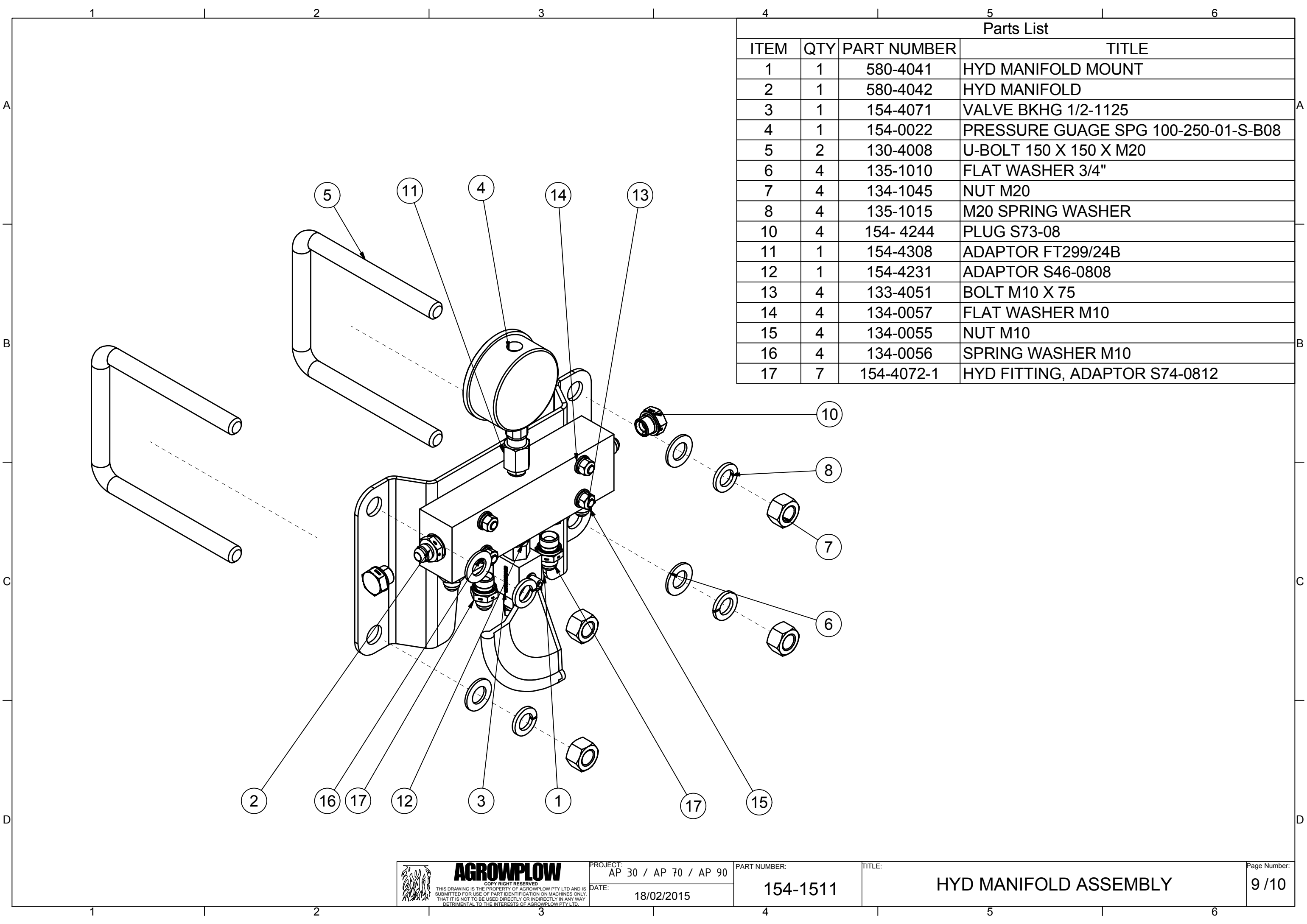
PROJECT: AP 70  
DATE: 18/02/2015

PART NUMBER:  
**580-4302**

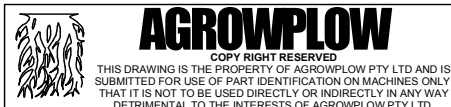
TITLE:  
**HARD LINE ASSEMBLY COMPONENTS**

Page Number:  
**8 / 10**





Parts List			
ITEM	QTY	PART NUMBER	TITLE
1	1	580-4041	HYD MANIFOLD MOUNT
2	1	580-4042	HYD MANIFOLD
3	1	154-4071	VALVE BKHG 1/2-1125
4	1	154-0022	PRESSURE GUAGE SPG 100-250-01-S-B08
5	2	130-4008	U-BOLT 150 X 150 X M20
6	4	135-1010	FLAT WASHER 3/4"
7	4	134-1045	NUT M20
8	4	135-1015	M20 SPRING WASHER
10	4	154- 4244	PLUG S73-08
11	1	154-4308	ADAPTOR FT299/24B
12	1	154-4231	ADAPTOR S46-0808
13	4	133-4051	BOLT M10 X 75
14	4	134-0057	FLAT WASHER M10
15	4	134-0055	NUT M10
16	4	134-0056	SPRING WASHER M10
17	7	154-4072-1	HYD FITTING, ADAPTOR S74-0812

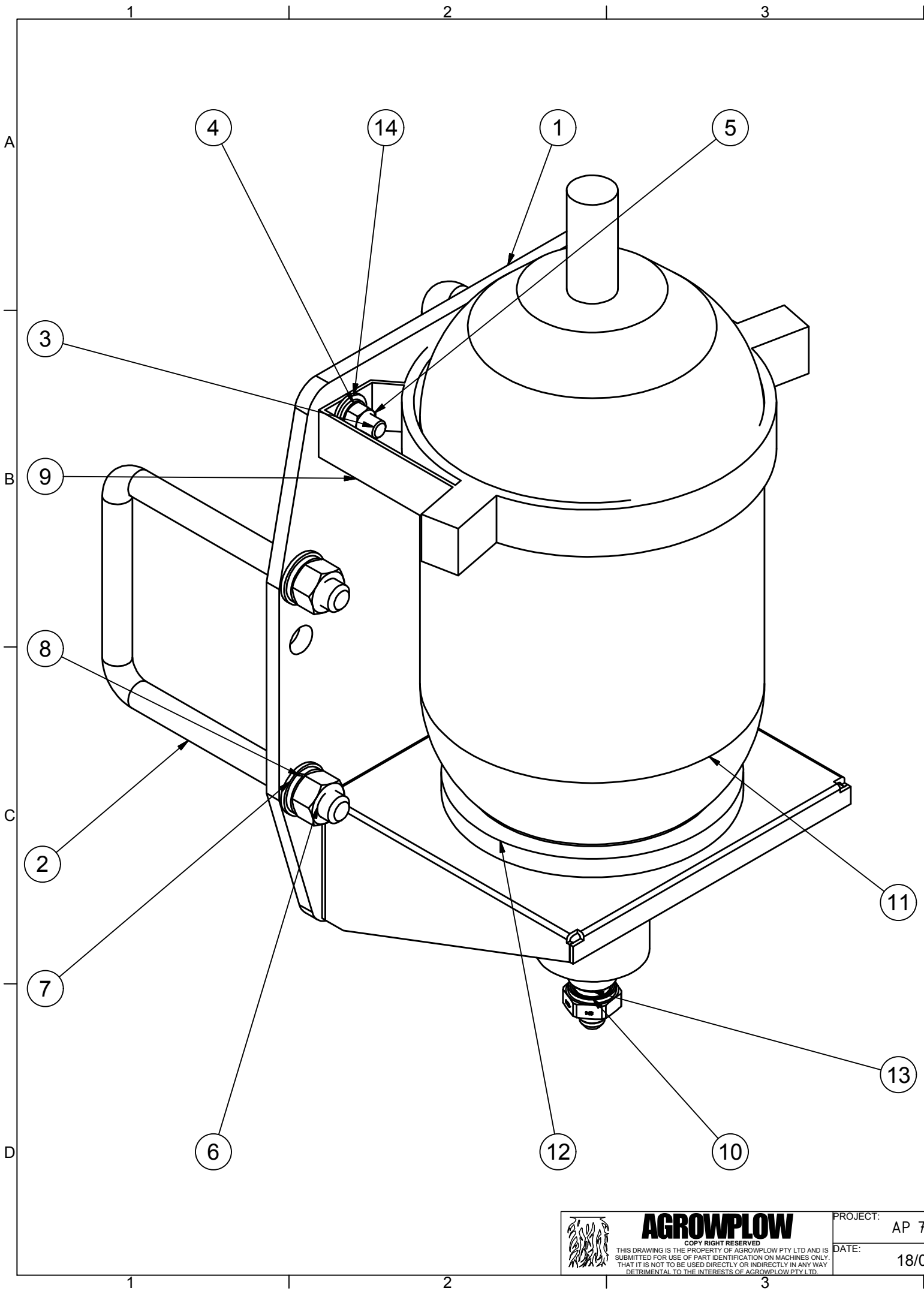


PROJECT:  
AP 30 / AP 70 / AP 90  
DATE:  
18/02/2015

PART NUMBER:  
**154-1511**

TITLE:  
**HYD MANIFOLD ASSEMBLY**

Page Number:  
**9 / 10**



Parts List			
ITEM	QTY	PART NUMBER	TITLE
1	1	066-4003	10 Litre Accumulator Plate
2	2	130-4008	U-BOLT 150 X 150 X M20
3	4	133-1055	Bolt - 1/2 UNC x 1 3/4"
4	4	135-0050	1/2" SPRING WASHER
5	4	134-0070	1/2" NUT
6	4	134-1045	NUT M20
7	4	135-1010	FLAT WASHER 3/4"
8	4	135-1015	M20 SPRING WASHER
9	1	154-4088	CLAMP AMP228
10	1	154-4074	HYD ADAPTOR S74-1212
11	1	154-4090	10L ACCUMULATOR STBA-10-10-NBR-P5-BB1
12	1	154-4087	SUPPORT BRACKET CUSHION BBR170
13	1	154-4086	ADAPTOR BIS 1263 3426010708
14	4	134-0060	1/2" FLAT WASHER