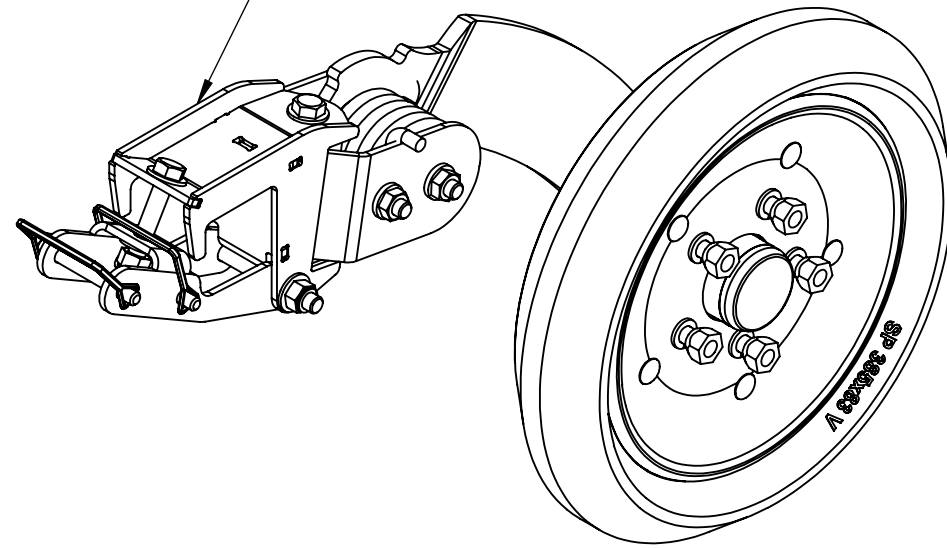
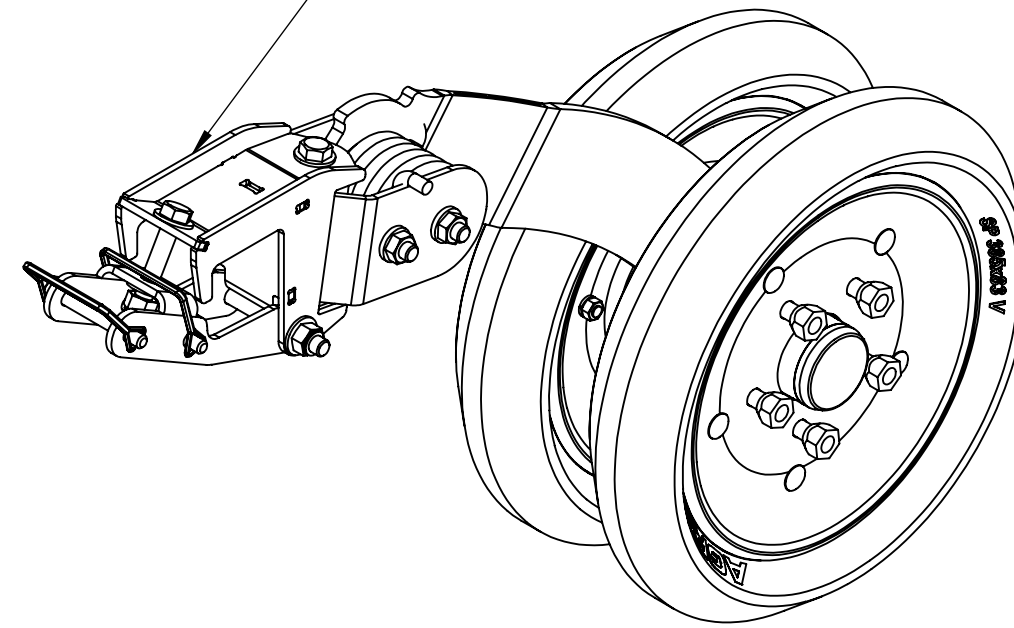


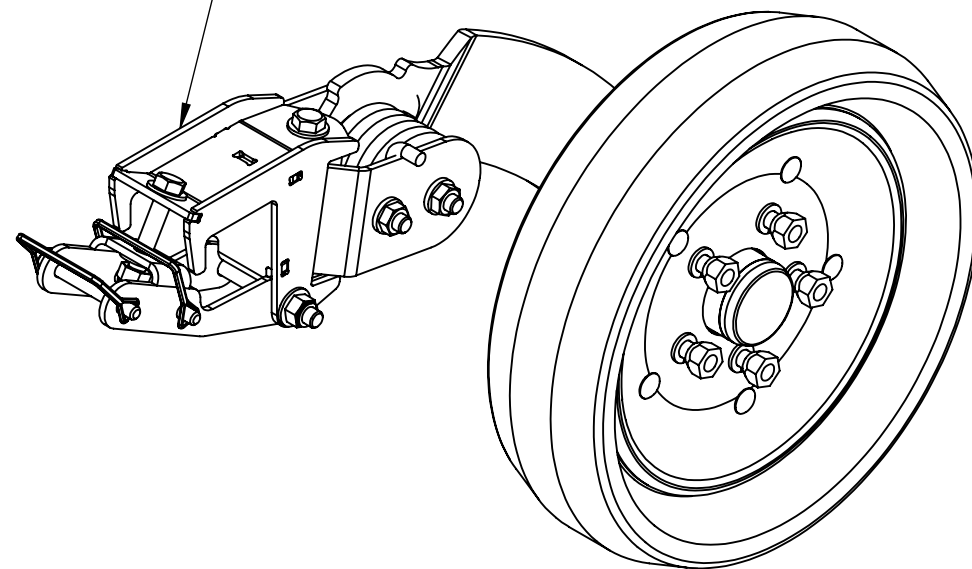
PRESSWHEEL SINGLE WEDGE



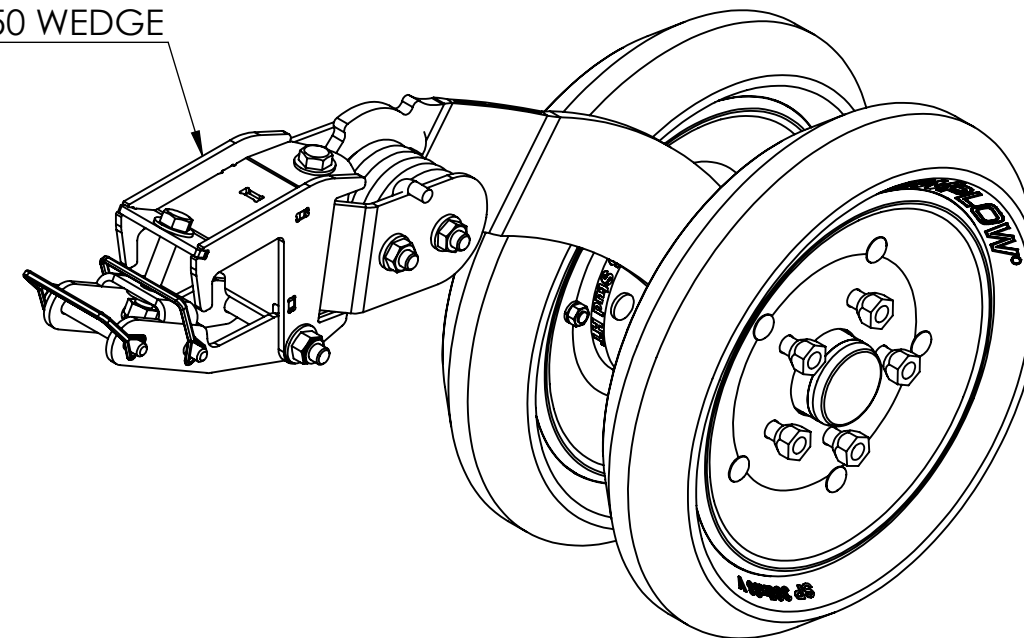
PRESSWHEEL DUAL 125 WEDGE



PRESSWHEEL SINGLE WIDE



PRESSWHEEL DUAL 150 WEDGE



AGROWFLOW

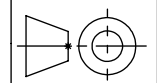
COPYRIGHT RESERVED
THIS DRAWING IS THE PROPERTY AGROWFLOW PTY LTD, AND IS SUBJECT TO RETURN
UPON DEMAND. IT IS SUBMITTED FOR USE ONLY IN CONNECTION WITH PROPOSALS OR
CONTRACTS OF THIS ORGANISATION UPON THE EXPRESS CONDITION THAT IT IS NOT TO
BE USED DIRECTLY OR INDIRECTLY IN ANY WAY DETRIMENTAL TO THE INTERESTS OF
AGROWFLOW PTY LTD.

TITLE:

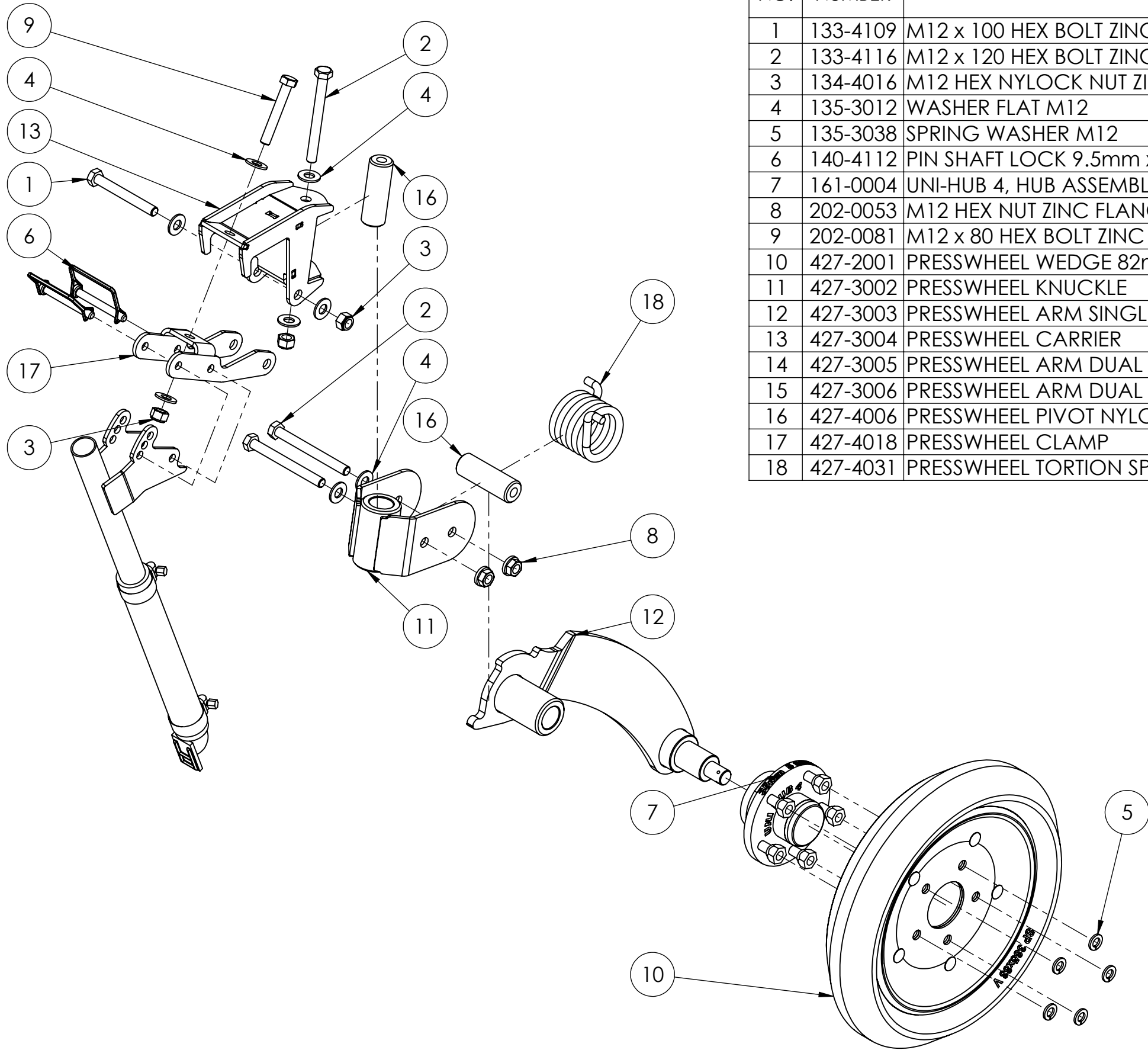
**AGROWFLOW
PRESSWHEEL**

LAST PRINTED 01-Feb-19

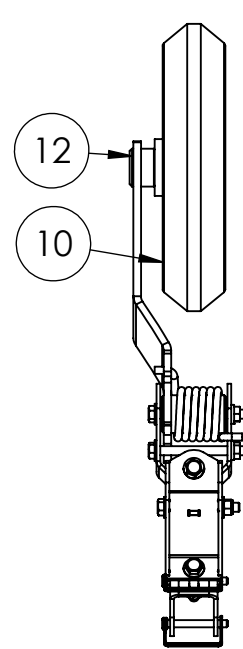
PART NUMBER
427-1000



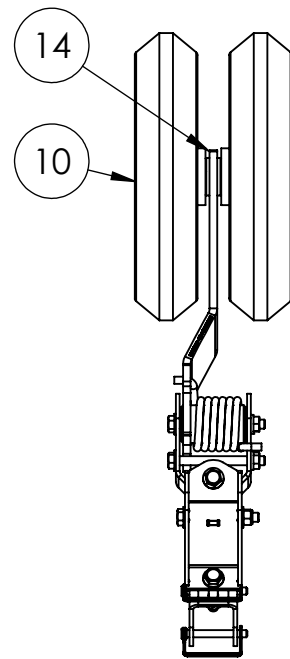
SHEET: 1 OF 3
PAGE:



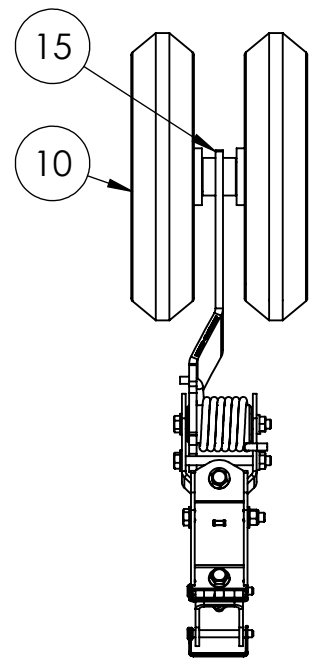
ITEM NO.	PART NUMBER	DESCRIPTION	PRESSWHEEL SINGLE WEDGE/QTY.	PRESSWHEEL DUAL 125 WEDGE/QTY.	PRESSWHEEL DUAL 150 WEDGE/QTY.
1	133-4109	M12 x 100 HEX BOLT ZINC GR8.8	1	1	1
2	133-4116	M12 x 120 HEX BOLT ZINC GR8.8	3	3	3
3	134-4016	M12 HEX NYLOCK NUT ZINC PLATED GR 8.8	3	3	3
4	135-3012	WASHER FLAT M12	8	8	8
5	135-3038	SPRING WASHER M12	5	10	10
6	140-4112	PIN SHAFT LOCK 9.5mm x 70mm	2	2	2
7	161-0004	UNI-HUB 4, HUB ASSEMBLY	1	2	2
8	202-0053	M12 HEX NUT ZINC FLANGE GR 8.8	2	2	2
9	202-0081	M12 x 80 HEX BOLT ZINC GR8.8	1	1	1
10	427-2001	PRESSWHEEL WEDGE 82mm	1	2	2
11	427-3002	PRESSWHEEL KNUCKLE	1	1	1
12	427-3003	PRESSWHEEL ARM SINGLE	1	-	-
13	427-3004	PRESSWHEEL CARRIER	1	1	1
14	427-3005	PRESSWHEEL ARM DUAL 125mm	-	1	-
15	427-3006	PRESSWHEEL ARM DUAL 125mm	-	-	1
16	427-4006	PRESSWHEEL PIVOT NYLON	2	2	2
17	427-4018	PRESSWHEEL CLAMP	1	1	1
18	427-4031	PRESSWHEEL TORSION SPRING	1	1	1



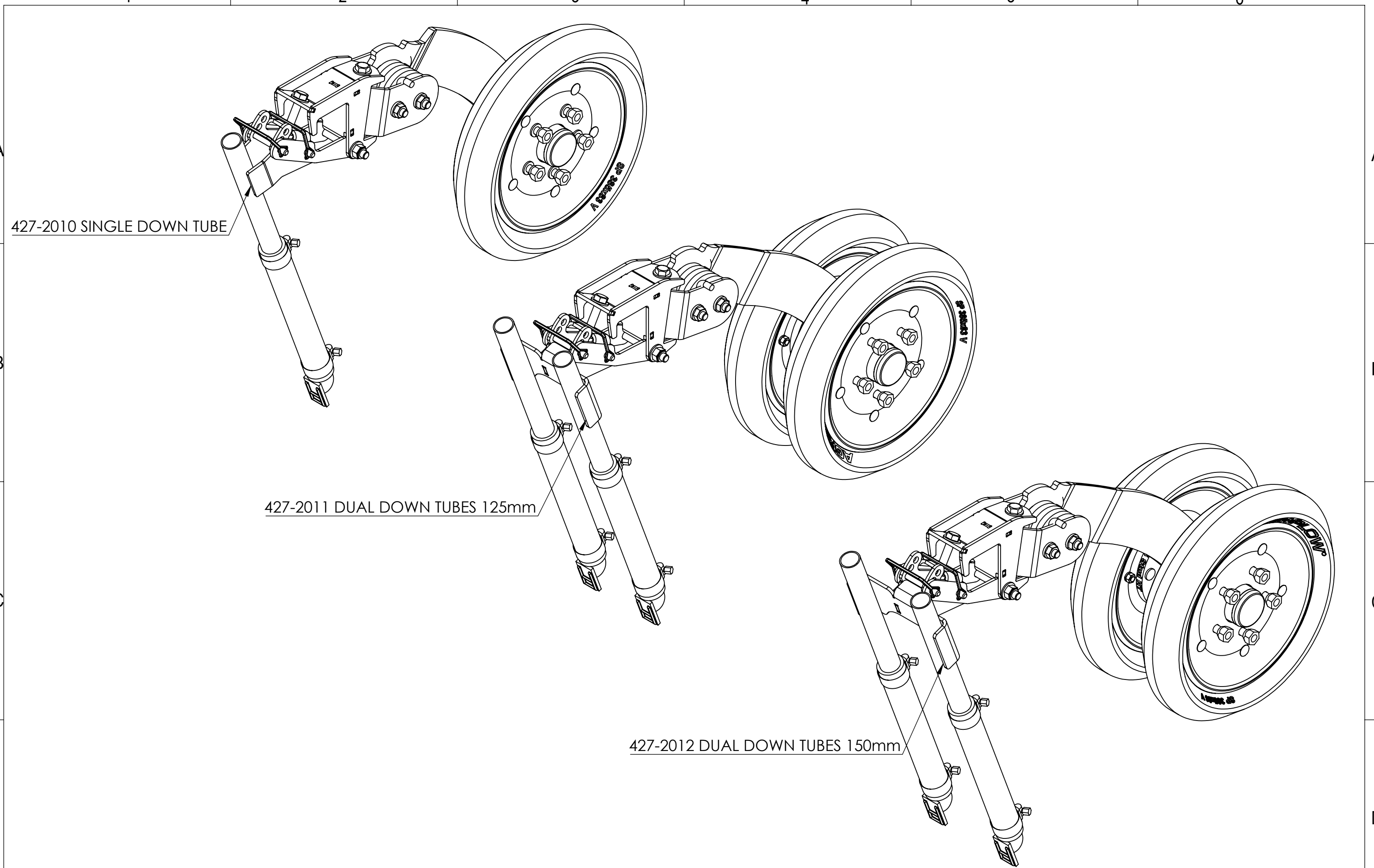
SINGLE
427-1001



DUAL 125mm
427-1002



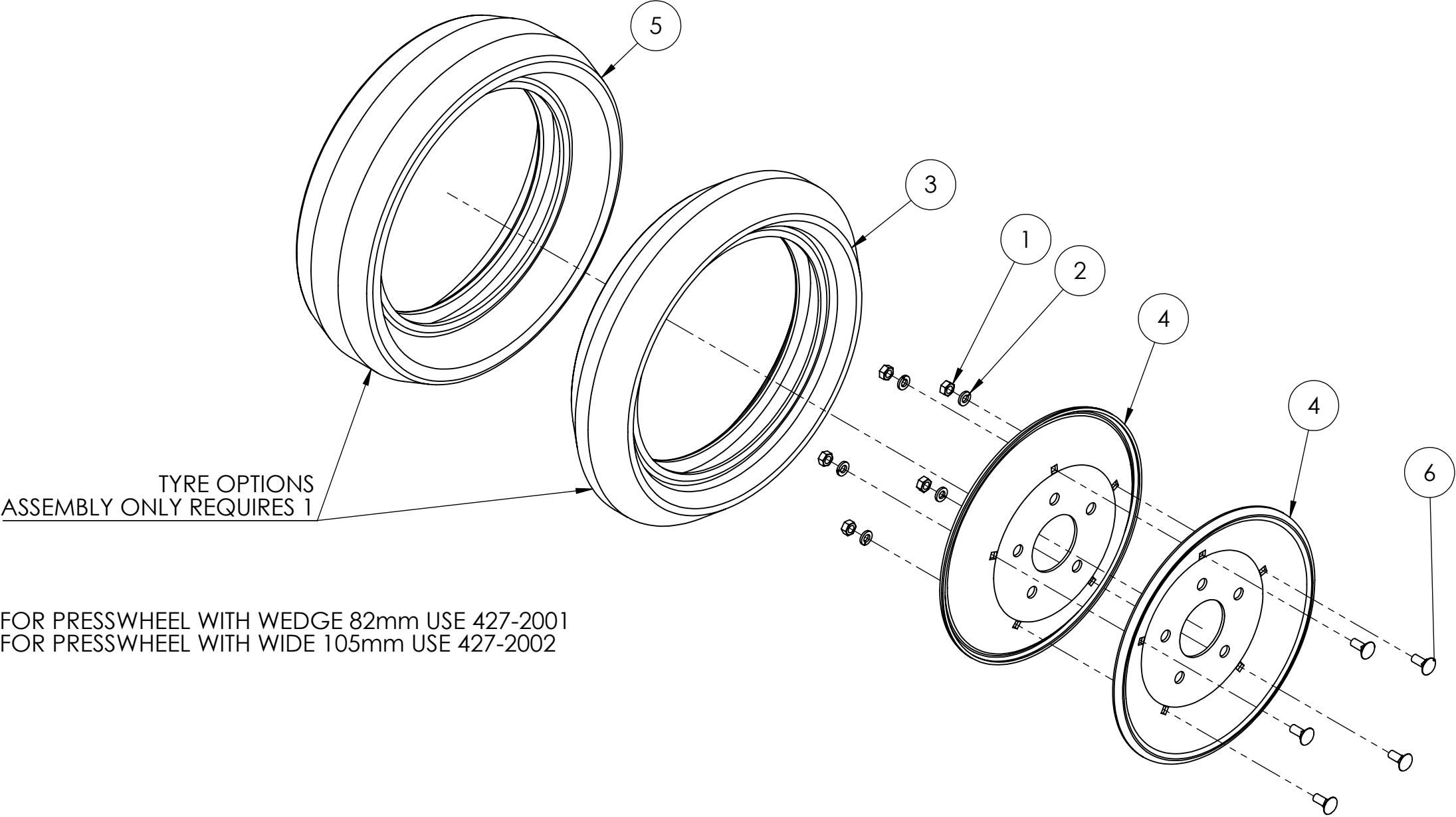
DUAL 150mm
427-1003



NOTE:
SMALL SEED DELIVERY THOUGH 219-4012 CLEAR TUBE

AGROWPLOW <small>COPYRIGHT RESERVED THIS DRAWING IS THE PROPERTY AGROWPLOW PTY LTD, AND IS SUBJECT TO RETURN UPON DEMAND. IT IS SUBMITTED FOR USE ONLY IN CONNECTION WITH PROPOSALS OR CONTRACTS OF THIS ORGANISATION UPON THE EXPRESS CONDITION THAT IT IS NOT TO BE USED DIRECTLY OR INDIRECTLY IN ANY WAY DETRIMENTAL TO THE INTERESTS OF AGROWPLOW PTY LTD.</small>		TITLE: AGROWPLOW PRESSWHEEL LAST PRINTED 01-Feb-19		PART NUMBER 427-1000	
				 SHEET: 3 OF 3	
				PAGE: 3 OF 3	

ITEM NO.	PART NUMBER	DESCRIPTION	Default/Qty.
1	134-0035	M8 HEX NUT ZINC PLATED GR 8.8	5
2	135-3026	SPRING WASHER M8	5
3	427-4001	PRESSWHEEL TYRE WEDGE 82mm	1
4	427-4002	PRESSWHEEL RIM	2
5	427-4012	PRESSWHEEL TYRE WIDE 105mm	1
6	427-4022	BOLT M8 x 20 ZINC SQUARE NECK COACH	5



AGROWPLOW

COPYRIGHT RESERVED
THIS DRAWING IS THE PROPERTY AGROWPLOW PTY LTD, AND IS SUBJECT TO RETURN UPON DEMAND. IT IS SUBMITTED FOR USE ONLY IN CONNECTION WITH PROPOSALS OR CONTRACTS OF THIS ORGANISATION UPON THE EXSPRESS CONDITION THAT IT IS NOT TO BE USED DIRECTLY OR INDIRECTLY IN ANY WAY DETRIMENTAL TO THE INTERESTES OF AGROWPLOW PTY LTD.

TITLE:

PRESSWHEEL TYRE AND RIM

LAST PRINTED 03-Aug-18

PART NUMBER

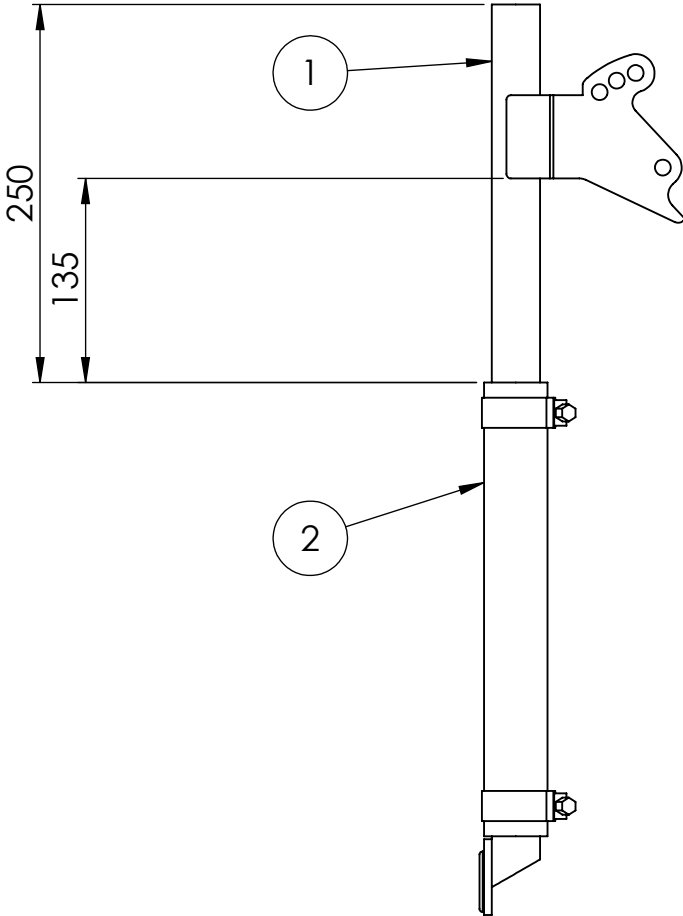
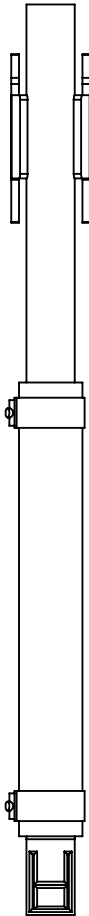
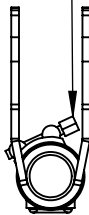
427-2000

SHEET: 1 OF 1

PAGE: 4

ITEM NO.	PART NUMBER	DESCRIPTION	QTY.
1	427-3011	PRESSWHEEL SINGLE SMALL SEED TUBE PIPES	1
2	646-2004	SMALL SEED FLEXI CHUTE	1

HOES CLAMPS ANGLED SO THE HEX WILL NOT FACE GROUND WEAR



NOTE:
SMALL SEED DELIVERY THOUGH 219-4012 CLEAR TUBE

AGROWFLOW

COPYRIGHT RESERVED
THIS DRAWING IS THE PROPERTY AGROWFLOW PTY LTD, AND IS SUBJECT TO RETURN UPON DEMAND. IT IS SUBMITTED FOR USE ONLY IN CONNECTION WITH PROPOSALS OR CONTRACTS OF THIS ORGANISATION UPON THE EXSPRESS CONDITION THAT IT IS NOT TO BE USED DIRECTLY OR INDIRECTLY IN ANY WAY DETRIMENTAL TO THE INTERESTES OF AGROWFLOW PTY LTD.

TITLE:
PRESSWHEEL SMALL SEED TUBE SINGLE

LAST PRINTED 01-Feb-19
TOTAL MASS 1.52 Kg

PART NUMBER
427-2010

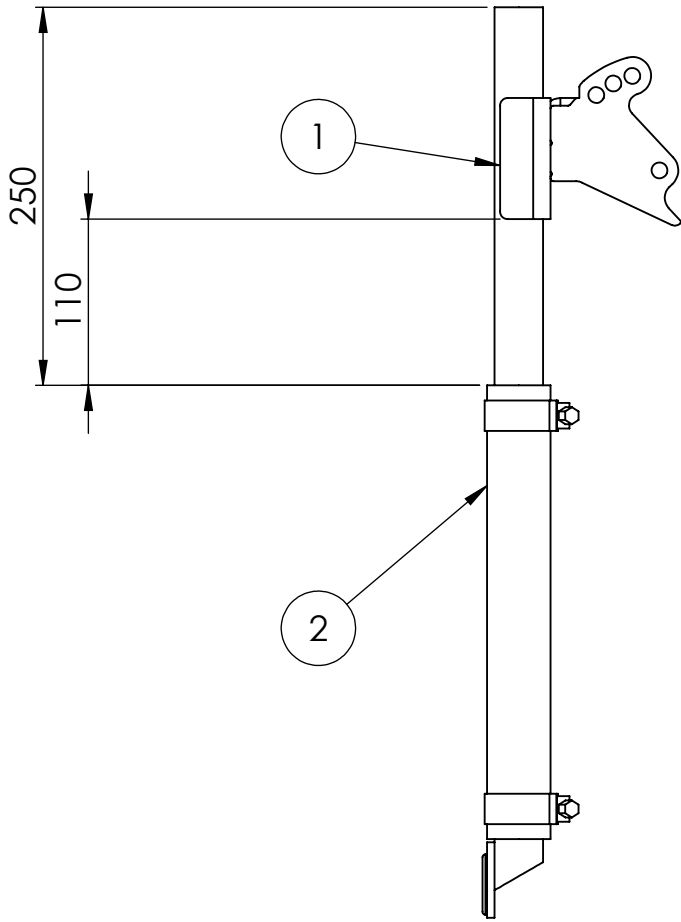
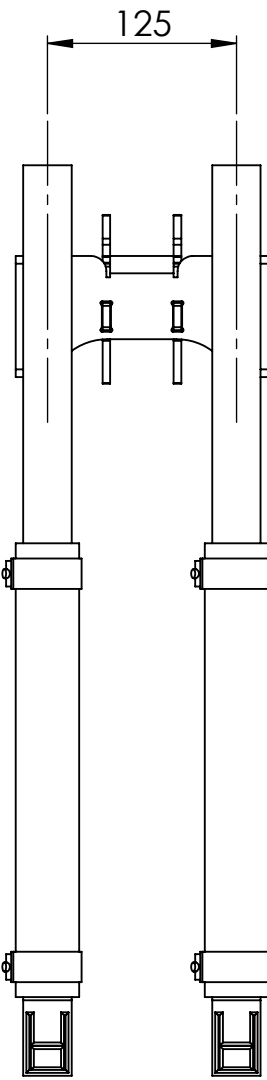
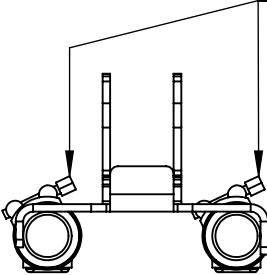


SHEET:
1 OF 1

PAGE:

ITEM NO.	PART NUMBER	DESCRIPTION	QTY.
1	427-3009	PRESSWHEEL DUAL 125mm SMALL SEED	1
2	646-2004	SMALL SEED FLEXI CHUTE	2

HOES CLAMPS ANGLED SO
THE HEX WILL NOT FACE GROUND WEAR



NOTE:
SMALL SEED DELIVERY THOUGH 219-4012 CLEAR TUBE

AGROWPLOW

COPYRIGHT RESERVED
THIS DRAWING IS THE PROPERTY AGROWPLOW PTY LTD, AND IS SUBJECT TO RETURN UPON DEMAND. IT IS SUBMITTED FOR USE ONLY IN CONNECTION WITH PROPOSALS OR CONTRACTS OF THIS ORGANISATION UPON THE EXSPRESS CONDITION THAT IT IS NOT TO BE USED DIRECTLY OR INDIRECTLY IN ANY WAY DETRIMENTAL TO THE INTERESTES OF AGROWPLOW PTY LTD.

TITLE:
PRESSWHEEL SMALL SEED TUBE DUAL

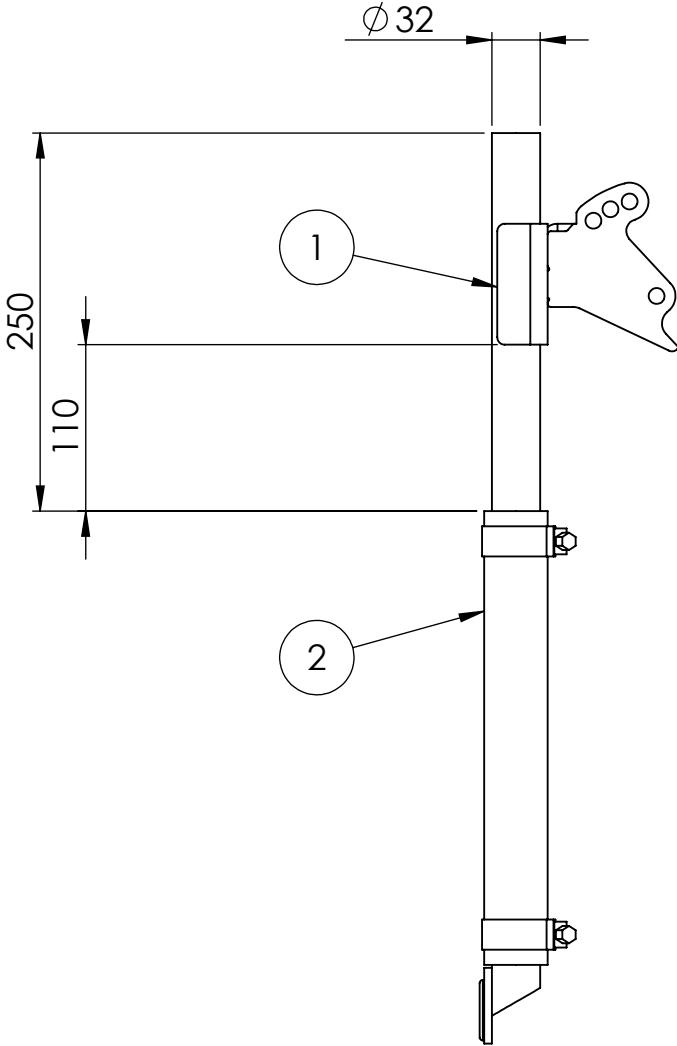
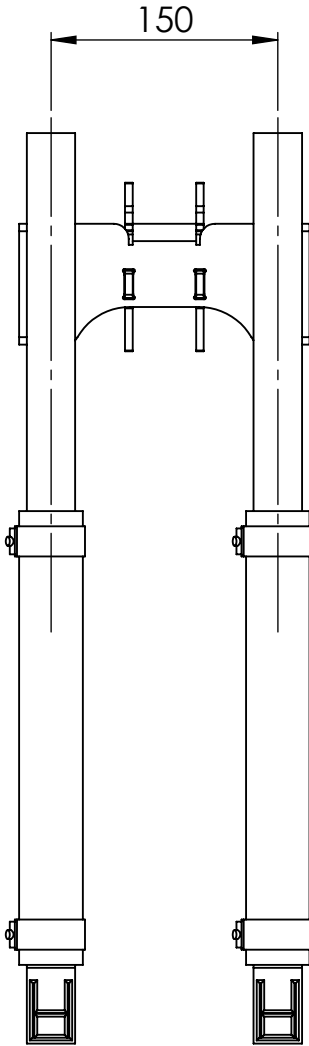
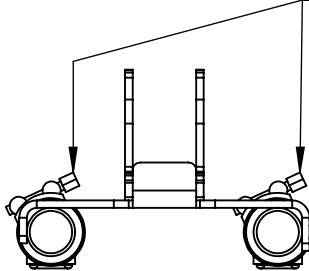
LAST PRINTED 01-Feb-19
TOTAL MASS 2.94 Kg

PART NUMBER
427-2011

SHEET: 1 OF 1
PAGE:

ITEM NO.	PART NUMBER	DESCRIPTION	QTY.
1	427-3010	PRESSWHEEL DUAL 150mm SMALL SEED TUBE PIPES	1
2	646-2004	SMALL SEED FLEXI CHUTE	2

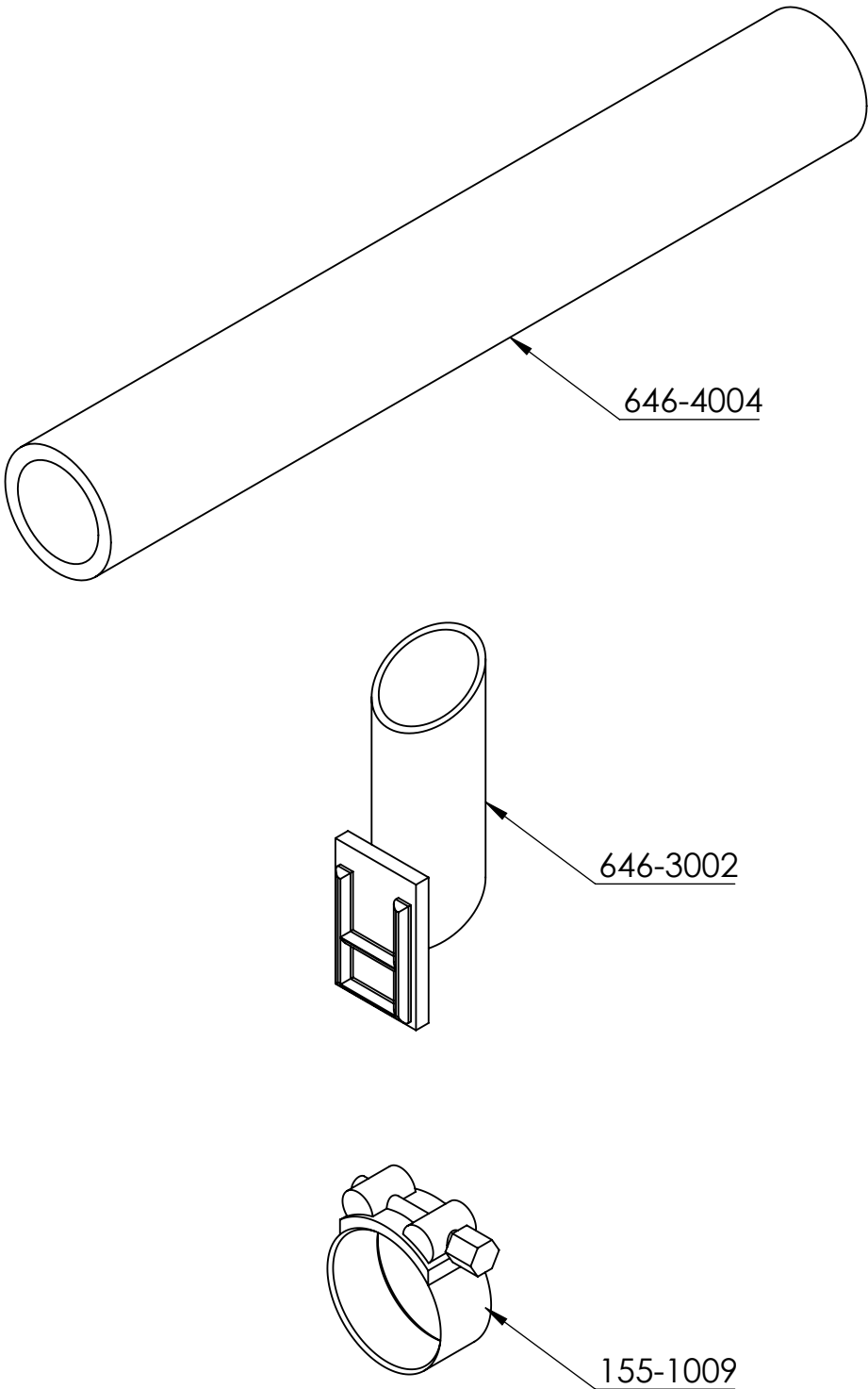
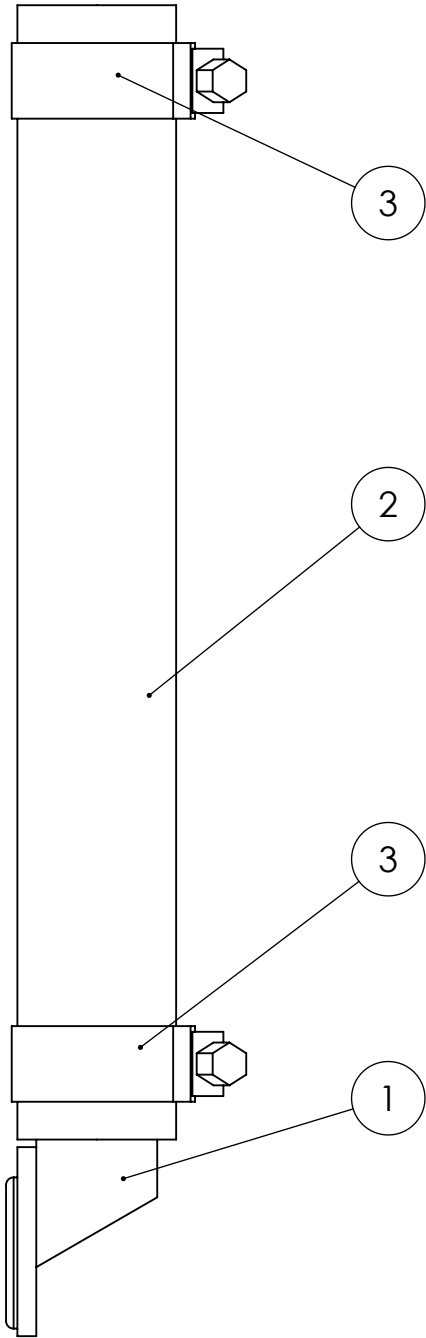
HOES CLAMPS ANGLED SO THE HEX WILL NOT FACE GROUND WEAR



NOTE:
SMALL SEED DELIVERY THOUGH 219-4012 CLEAR TUBE

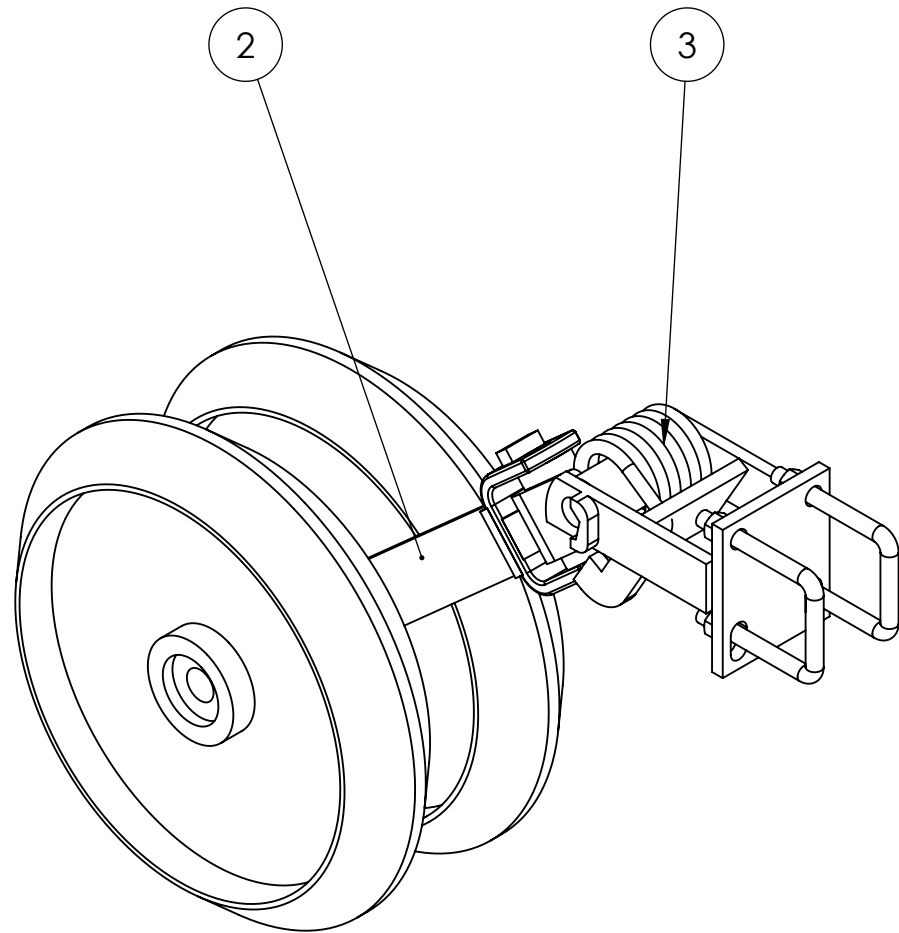
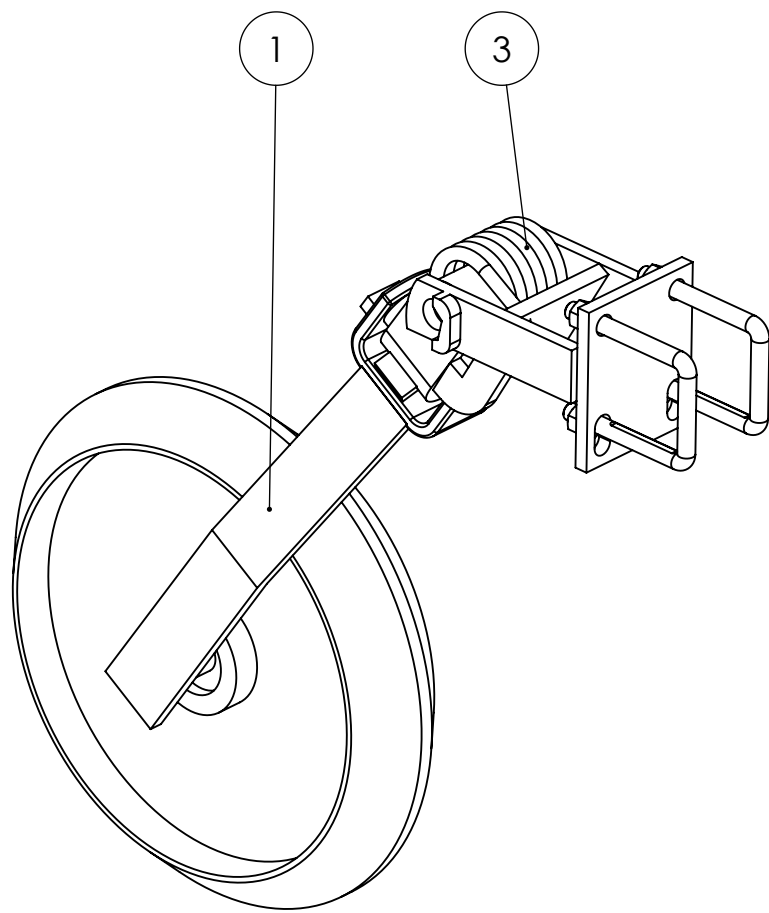
AGROWFLOW <small>COPYRIGHT RESERVED THIS DRAWING IS THE PROPERTY AGROWFLOW PTY LTD, AND IS SUBJECT TO RETURN UPON DEMAND. IT IS SUBMITTED FOR USE ONLY IN CONNECTION WITH PROPOSALS OR CONTRACTS OF THIS ORGANISATION UPON THE EXSPRESS CONDITION THAT IT IS NOT TO BE USED DIRECTLY OR INDIRECTLY IN ANY WAY DETRIMENTAL TO THE INTERESTES OF AGROWFLOW PTY LTD.</small>	TITLE: PRESSWHEEL SMALL SEED TUBE DUAL <small>LAST PRINTED 01-Feb-19 TOTAL MASS 3.02 Kg</small>	PART NUMBER 427-2012 <table><tr><td></td><td>SHEET: 1 OF 1</td><td>PAGE:</td></tr></table>		SHEET: 1 OF 1	PAGE:
	SHEET: 1 OF 1	PAGE:			

ITEM NO.	PART NUMBER	DESCRIPTION	QTY.
1	646-3002	SML SEED FLEXI CHUTE DRAG	1
2	646-4004	SML SEED FLEXI CHUTE FLEXI TUBE	1
3	155-1009	HOSE CLAMP 40-43mm STAINLESS STEEL W2	2



AGROWFLOW COPYRIGHT RESERVED THIS DRAWING IS THE PROPERTY AGROWFLOW PTY LTD, AND IS SUBJECT TO RETURN UPON DEMAND. IT IS SUBMITTED FOR USE ONLY IN CONNECTION WITH PROPOSALS OR CONTRACTS OF THIS ORGANISATION UPON THE EXSPRESS CONDITION THAT IT IS NOT TO BE USED DIRECTLY OR INDIRECTLY IN ANY WAY DETRIMENTAL TO THE INTERESTES OF AGROWFLOW PTY LTD.		TITLE: FLEXI SEED TUBE		PART NUMBER 646-2004	
LAST PRINTED 24/01/2019		TOTAL MASS Kg			SHEET: 1 OF 1 PAGE: 8

Item No.	Part Number	Description
1	018-3010	Single Press Wheel
2	018-3011	Dual Press Wheel
3	018-4035	Jadan Press Wheel Spring



OBSOLETE
Jadan Press wheels supplied prior to 2019

AGROWFLOW <small>COPYRIGHT RESERVED THIS DRAWING IS THE PROPERTY AGROWFLOW PTY LTD, AND IS SUBJECT TO RETURN UPON DEMAND. IT IS SUBMITTED FOR USE ONLY IN CONNECTION WITH PROPOSALS OR CONTRACTS OF THIS ORGANISATION UPON THE EXPRESS CONDITION THAT IT IS NOT TO BE USED DIRECTLY OR INDIRECTLY IN ANY WAY DETRIMENTAL TO THE INTERESTES OF AGROWFLOW PTY LTD.</small>	TITLE: Jadan Press Wheels		PART NUMBER 018-3013	
	LAST PRINTED 25/01/2019 TOTAL MASS Kg			SHEET: 1 OF 1 PAGE: 9