



#9v2 SHANK SPARE PARTS MANUAL

#9v2 HYDRAULIC SHANK ASSEMBLIES

#9v2 HYDRAULIC SHANK ASSEMBLY WITH COULTER CHOCKED RIGID

#9v2 RIGID SHANK ASSEMBLIES

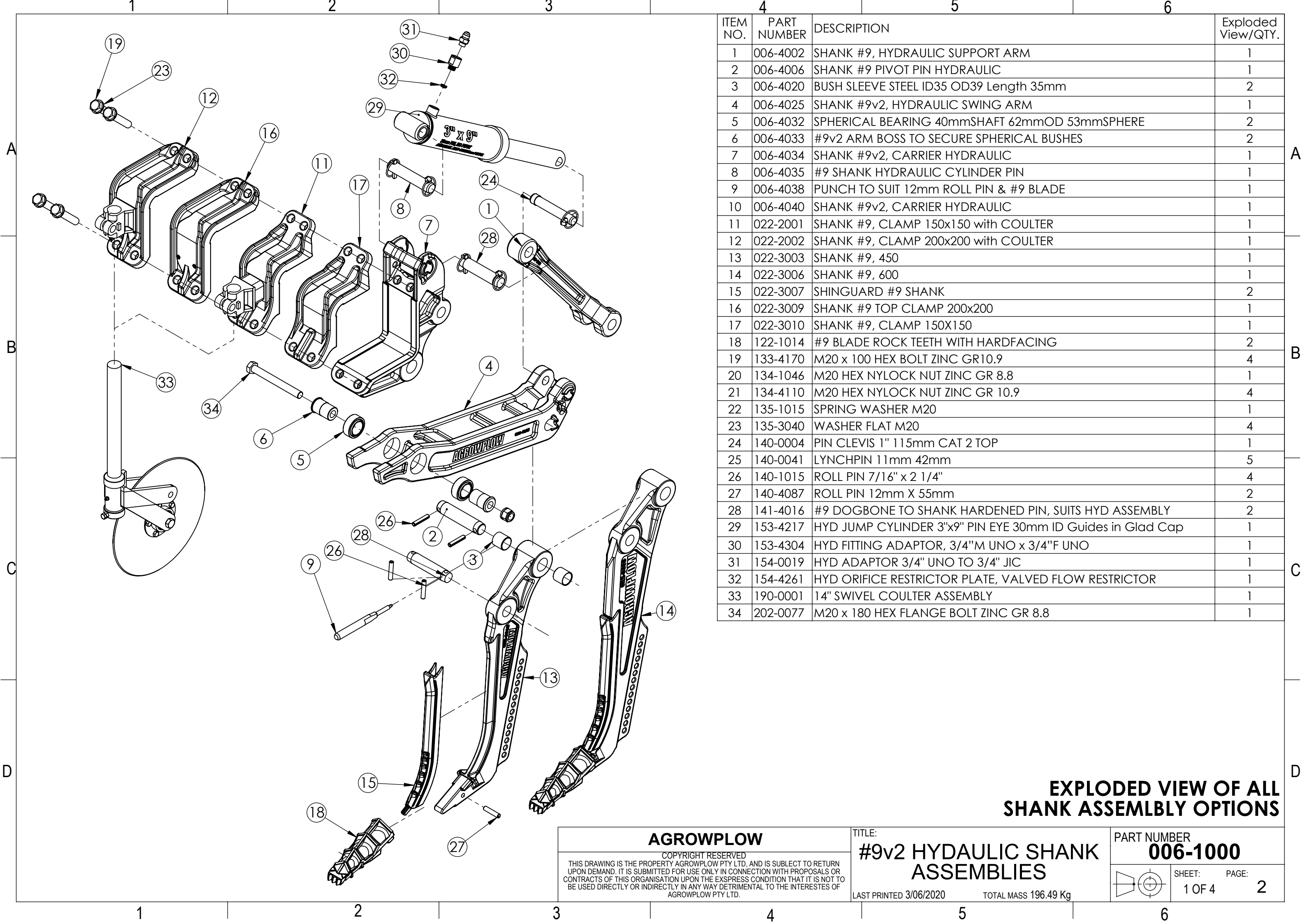
For related options see specific spare parts book:

Swivel Coultter Assemblies

Inclusion Plate Assemblies

Shank Pipes

Shank Sweeps



ITEM NO.	PART NUMBER	DESCRIPTION	Exploded View/QTY.
1	006-4002	SHANK #9, HYDRAULIC SUPPORT ARM	1
2	006-4006	SHANK #9 PIVOT PIN HYDRAULIC	1
3	006-4020	BUSH SLEEVE STEEL ID35 OD39 Length 35mm	2
4	006-4025	SHANK #9v2, HYDRAULIC SWING ARM	1
5	006-4032	SPHERICAL BEARING 40mmSHAFT 62mmOD 53mmSPHERE	2
6	006-4033	#9v2 ARM BOSS TO SECURE SPHERICAL BUSHES	2
7	006-4034	SHANK #9v2, CARRIER HYDRAULIC	1
8	006-4035	#9 SHANK HYDRAULIC CYLINDER PIN	1
9	006-4038	PUNCH TO SUIT 12mm ROLL PIN & #9 BLADE	1
10	006-4040	SHANK #9v2, CARRIER HYDRAULIC	1
11	022-2001	SHANK #9, CLAMP 150x150 with COULTER	1
12	022-2002	SHANK #9, CLAMP 200x200 with COULTER	1
13	022-3003	SHANK #9, 450	1
14	022-3006	SHANK #9, 600	1
15	022-3007	SHINGUARD #9 SHANK	2
16	022-3009	SHANK #9 TOP CLAMP 200x200	1
17	022-3010	SHANK #9, CLAMP 150X150	1
18	122-1014	#9 BLADE ROCK TEETH WITH HARDFACING	2
19	133-4170	M20 x 100 HEX BOLT ZINC GR10.9	4
20	134-1046	M20 HEX NYLOCK NUT ZINC GR 8.8	1
21	134-4110	M20 HEX NYLOCK NUT ZINC GR 10.9	4
22	135-1015	SPRING WASHER M20	1
23	135-3040	WASHER FLAT M20	4
24	140-0004	PIN CLEVIS 1" 115mm CAT 2 TOP	1
25	140-0041	LYNCHPIN 11mm 42mm	5
26	140-1015	ROLL PIN 7/16" x 2 1/4"	4
27	140-4087	ROLL PIN 12mm X 55mm	2
28	141-4016	#9 DOGBONE TO SHANK HARDENED PIN, SUITS HYD ASSEMBLY	2
29	153-4217	HYD JUMP CYLINDER 3"x9" PIN EYE 30mm ID Guides in Glad Cap	1
30	153-4304	HYD FITTING ADAPTOR, 3/4"M UNO x 3/4"F UNO	1
31	154-0019	HYD ADAPTOR 3/4" UNO TO 3/4" JIC	1
32	154-4261	HYD ORIFICE RESTRICTOR PLATE, VALVED FLOW RESTRICTOR	1
33	190-0001	14" SWIVEL COULTER ASSEMBLY	1
34	202-0077	M20 x 180 HEX FLANGE BOLT ZINC GR 8.8	1

EXPLODED VIEW OF ALL SHANK ASSEMBLY OPTIONS

AGROWFLOW
COPYRIGHT RESERVED
THIS DRAWING IS THE PROPERTY AGROWFLOW PTY LTD, AND IS SUBJECT TO RETURN UPON DEMAND. IT IS SUBMITTED FOR USE ONLY IN CONNECTION WITH PROPOSALS OR CONTRACTS OF THIS ORGANISATION UPON THE EXSPRESS CONDITION THAT IT IS NOT TO BE USED DIRECTLY OR INDIRECTLY IN ANY WAY DETRIMENTAL TO THE INTERESTES OF AGROWFLOW PTY LTD.

TITLE:
#9v2 HYDAULIC SHANK ASSEMBLIES

LAST PRINTED 3/06/2020

PART NUMBER
006-1000

SHEET: 1 OF 4

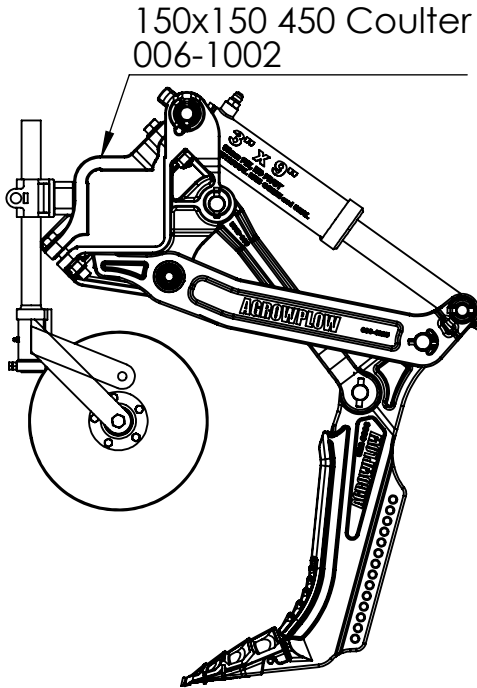
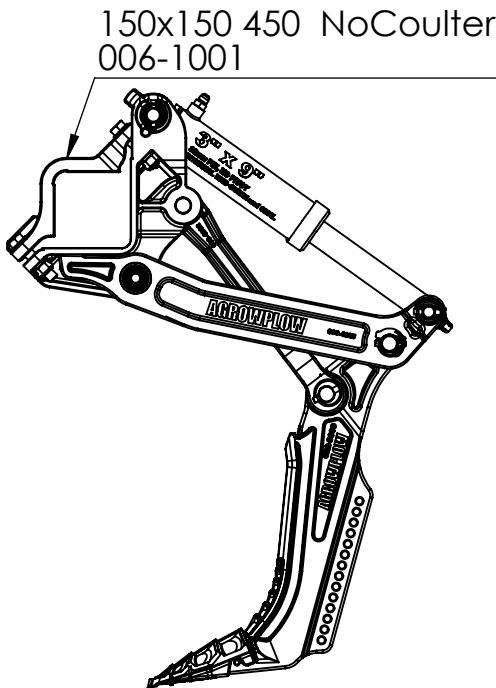
PAGE: 2

TOTAL MASS 196.49 Kg

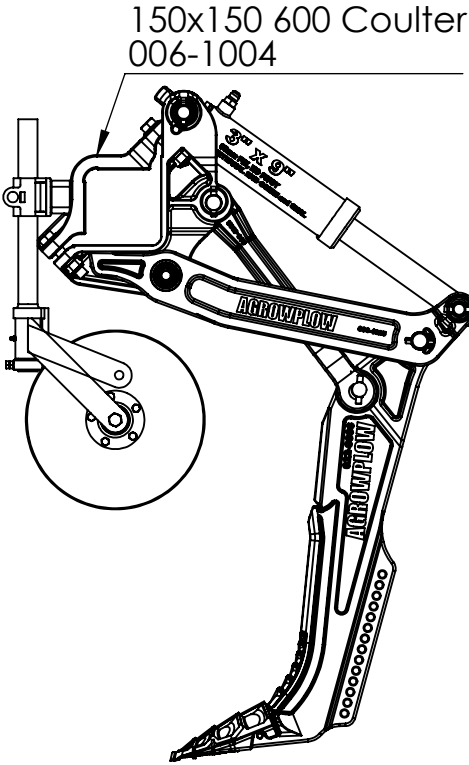
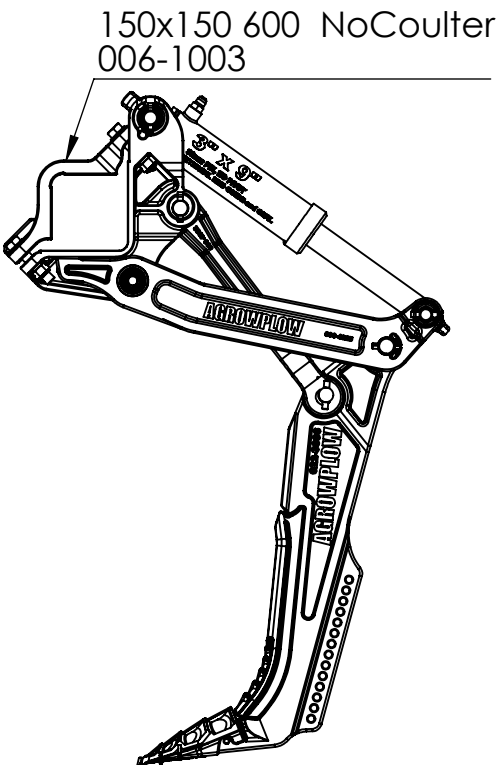
NO COULTER

WITH COULTER

450 SHANK



600 SHANK

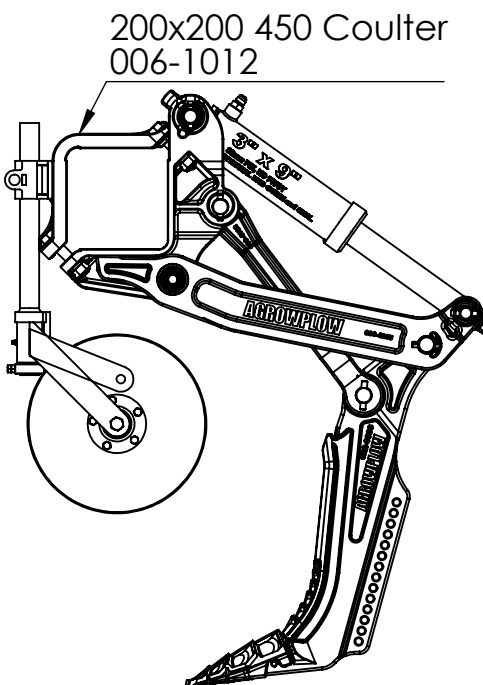
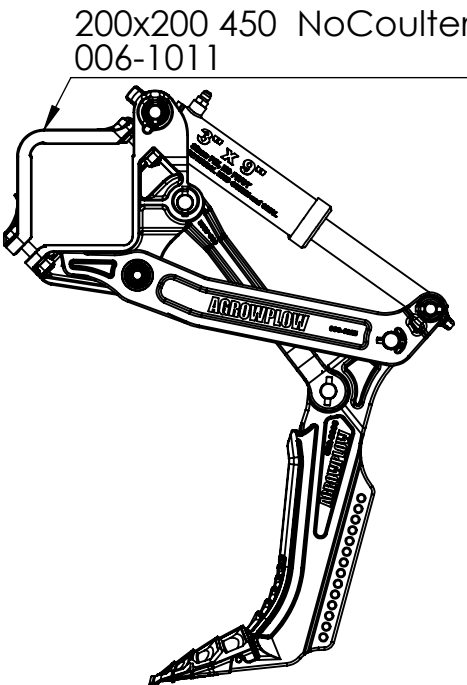


150x150 MOUNTING
SHANK ASSEMBLY OPTIONS

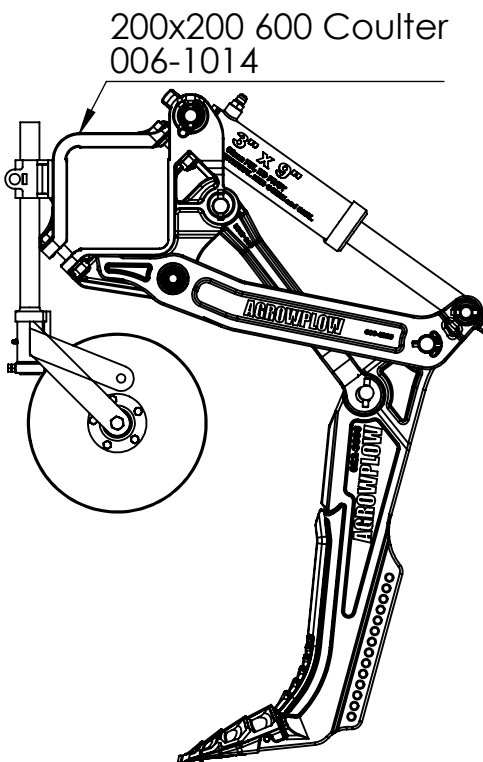
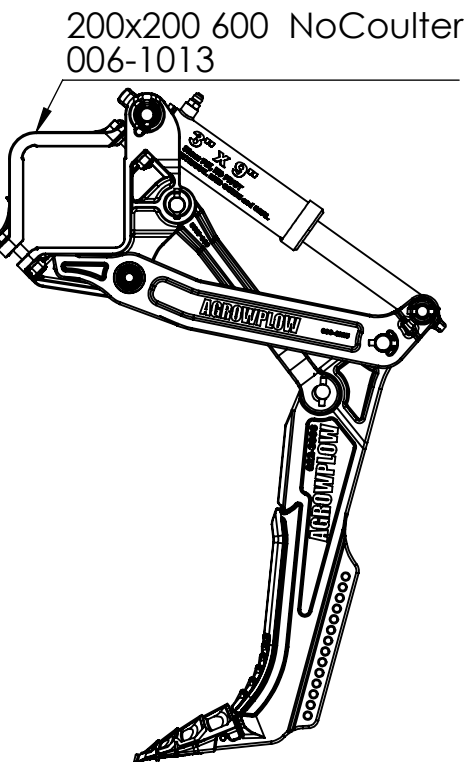
NO COULTER

WITH COULTER

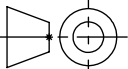
450 SHANK



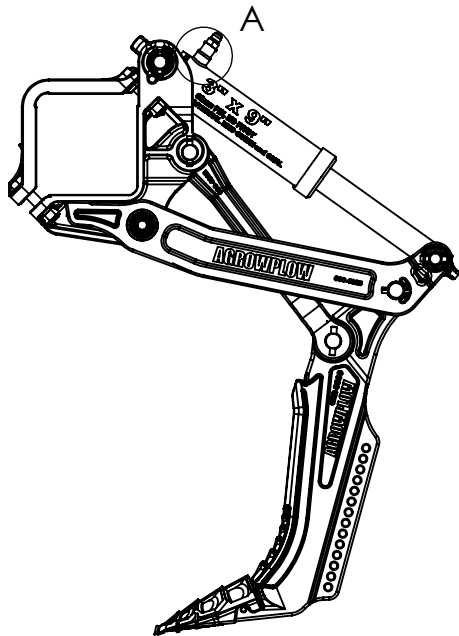
600 SHANK



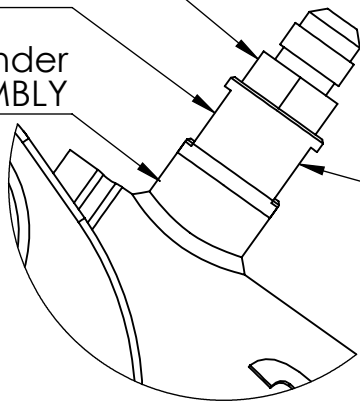
200x200 MOUNTING
SHANK ASSEMBLY OPTIONS

AGROWFLOW COPYRIGHT RESERVED THIS DRAWING IS THE PROPERTY AGROWFLOW PTY LTD, AND IS SUBJECT TO RETURN UPON DEMAND. IT IS SUBMITTED FOR USE ONLY IN CONNECTION WITH PROPOSALS OR CONTRACTS OF THIS ORGANISATION UPON THE EXSPRESS CONDITION THAT IT IS NOT TO BE USED DIRECTLY OR INDIRECTLY IN ANY WAY DETRIMENTAL TO THE INTERESTES OF AGROWFLOW PTY LTD.	TITLE: #9v2 HYDAULIC SHANK ASSEMBLIES LAST PRINTED 3/06/2020	PART NUMBER 006-1000	
		 SHEET: 3 OF 4	PAGE: 4

SOME HYDRAULIC CYLINDERS HAVE A CURVED FACE ON THE INSIDE OF THE HYDRAULIC FITTING WHICH DOES NOT SEAL AGAINST THE FLOW RESTRICTOR



- 154-0019
HYD ADAPTOR 3/4" UNO TO 3/4" JIC
- 153-4304
HYD FITTING ADAPTOR, 3/4" M UNO x 3/4" F UNO
- 153-4217 Cylinder
3x9 HYDRAULIC #9v2 SHANK ASSEMBLY

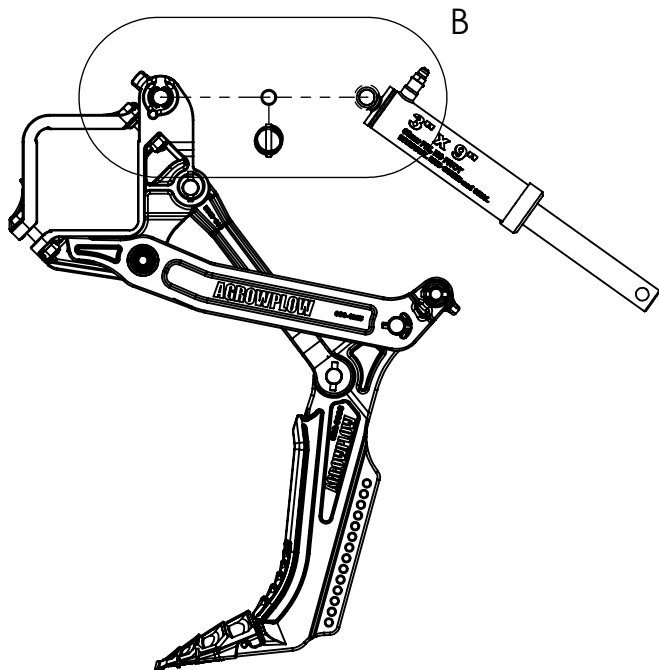


DETAIL A

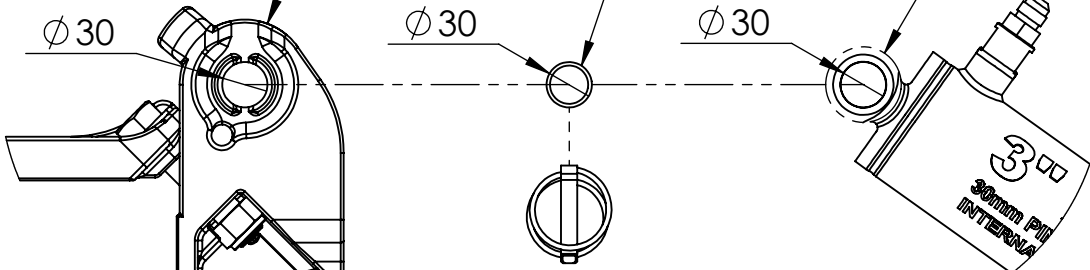
THIS PART IS NOT REQUIRED IF THE HYDRAULIC CYLINDER HAS A FLAT MACHINED FACE FOR THE FLOW RESTRICTOR TO SEAL AGAINST

THE #9v2 HYDRAULIC SHANK ASSEMBLY HAS A $\phi 30$ mm PIN IN THE TOP MOUNTING

THE OBSOLETE #9 HYDRAULIC SHANK ASSEMBLY HAS A 1" PIN. SEE "006-1000 SUPERSEDED HYDRAUSLIC CYLINDER OPTIONS" FOR PIN, CYLINDER AND CARRIER PART NUMBERS.



- 006-4034
SHANK #9v2, CARRIER HYDRAULIC
- 006-4035
#9 SHANK HYDRAULIC CYLINDER PIN
- 153-4217 Cylinder
3x9 HYDRAULIC #9v2 SHANK ASSEMBLY

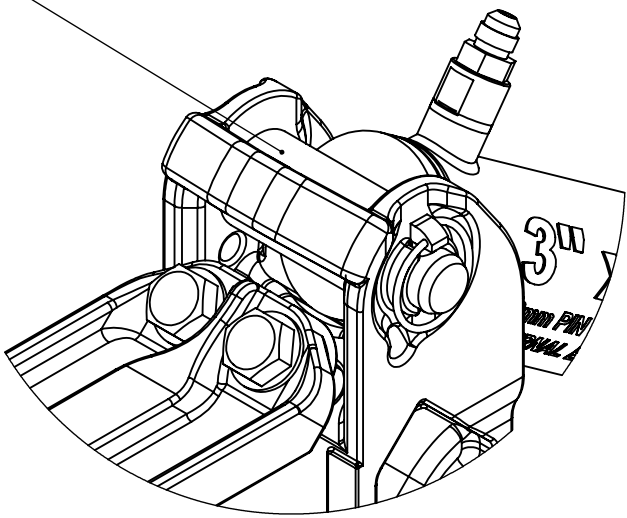
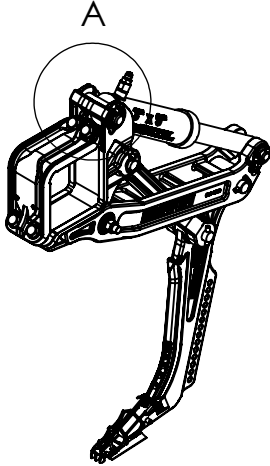


DETAIL B

VERSION 2 SPECIFIC DETAILS

AGROWPLOW		TITLE:		PART NUMBER	
THIS DRAWING IS THE PROPERTY AGROWPLOW PTY LTD, AND IS SUBJECT TO RETURN UPON DEMAND. IT IS SUBMITTED FOR USE ONLY IN CONNECTION WITH PROPOSALS OR CONTRACTS OF THIS ORGANISATION UPON THE EXPRESS CONDITION THAT IT IS NOT TO BE USED DIRECTLY OR INDIRECTLY IN ANY WAY DETRIMENTAL TO THE INTERESTES OF AGROWPLOW PTY LTD.		#9v2 HYDAULIC SHANK ASSEMBLIES		006-1000	
LAST PRINTED 3/06/2020		SHEET: 4 OF 4		PAGE: 5	

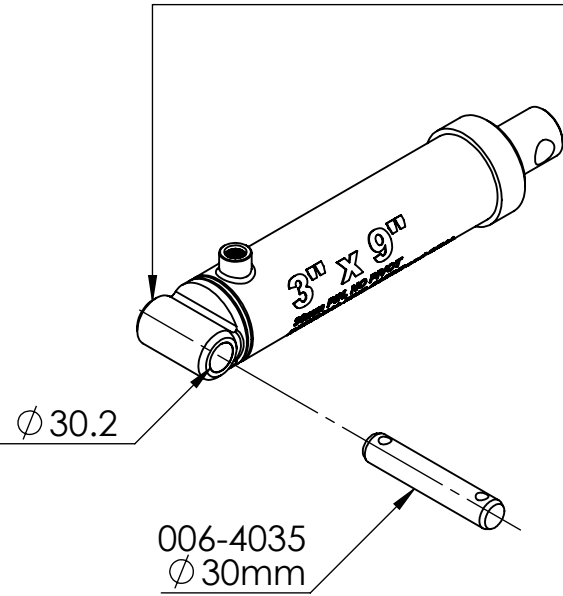
THE HYDRAULIC CYLINDER DEFINES WHICH ASSEMBLY IS REQUIRED. CHECK INTERNAL DIAMETER OF PIN EYE AND PIN TYPE TO CONFIRM WHICH ASSEMBLY IS RELEVANT



DETAIL A

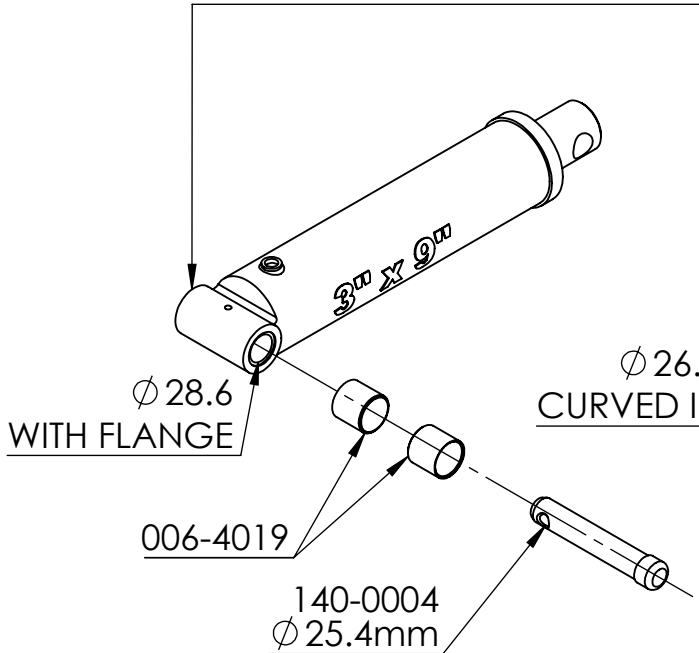
CURRENT

153-4217 Cylinder WITH STRAIGHT PIN EYE
STRAIGHT PIN



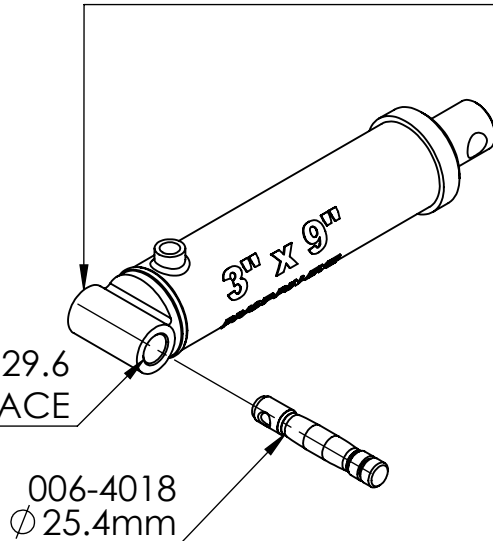
OBSOLETE

153-4202 Cylinder with STRAIGHT PIN EYE
STRAIGHT PIN WITH BUSHES



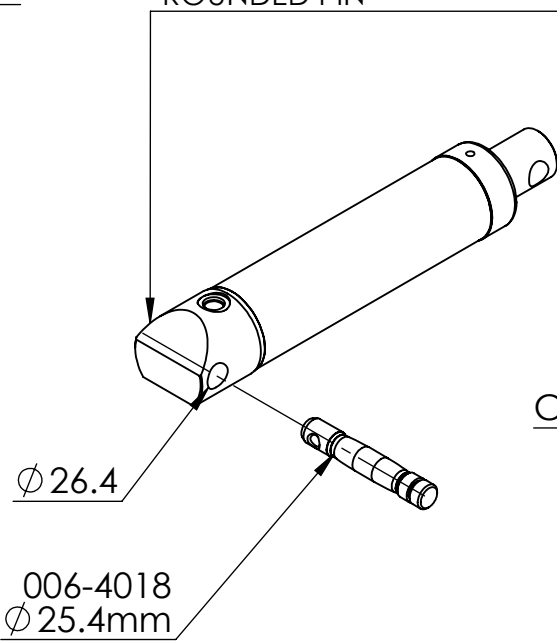
OBSOLETE

153-4204 Cylinder with PIVOTING PIN EYE
ROUNDED PIN



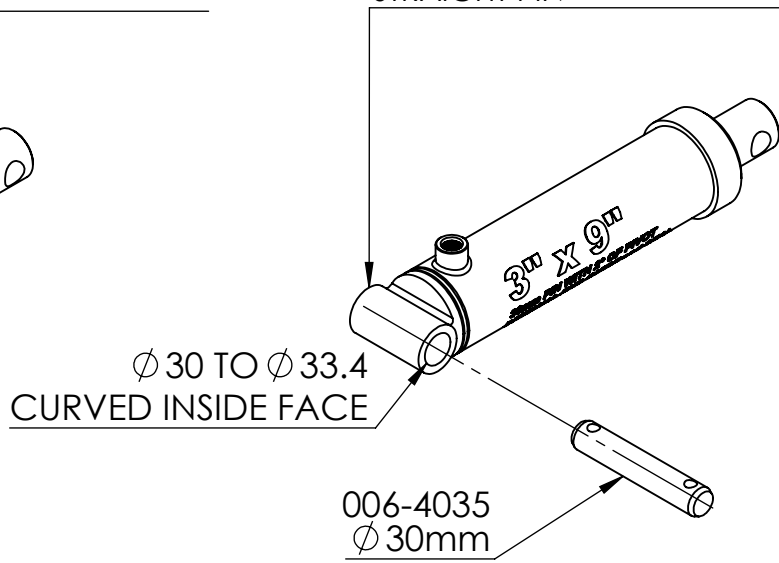
OBSOLETE

153-2405 Cylinder with STRAIGHT PIN EYE
ROUNDED PIN



OBSOLETE

153-4209 Cylinder with PIVOTING PIN EYE
STRAIGHT PIN



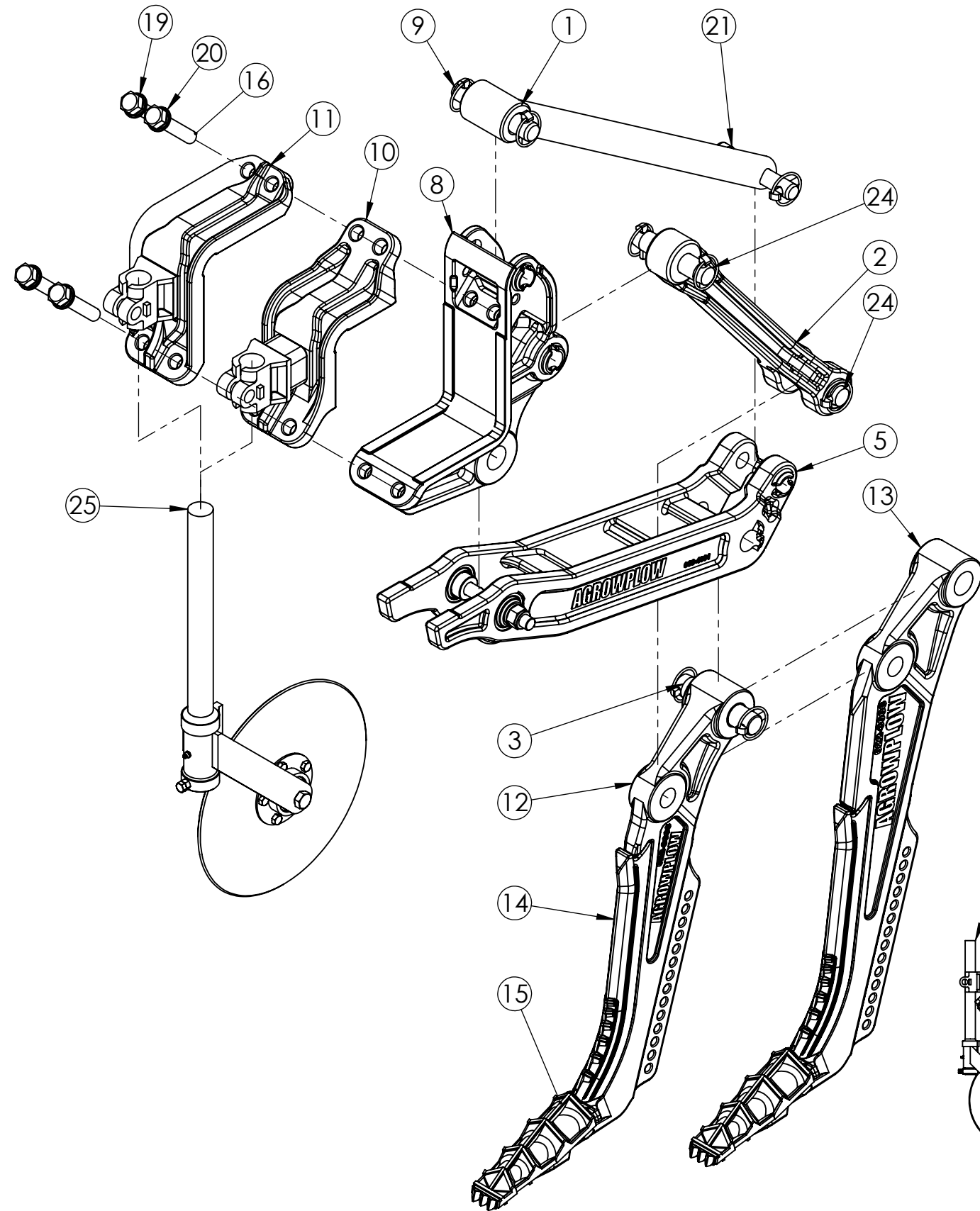
AGROWFLOW

COPYRIGHT RESERVED
THIS DRAWING IS THE PROPERTY AGROWFLOW PTY LTD, AND IS SUBJECT TO RETURN UPON DEMAND. IT IS SUBMITTED FOR USE ONLY IN CONNECTION WITH PROPOSALS OR CONTRACTS OF THIS ORGANISATION UPON THE EXPRESS CONDITION THAT IT IS NOT TO BE USED DIRECTLY OR INDIRECTLY IN ANY WAY DETRIMENTAL TO THE INTERESTS OF AGROWFLOW PTY LTD.

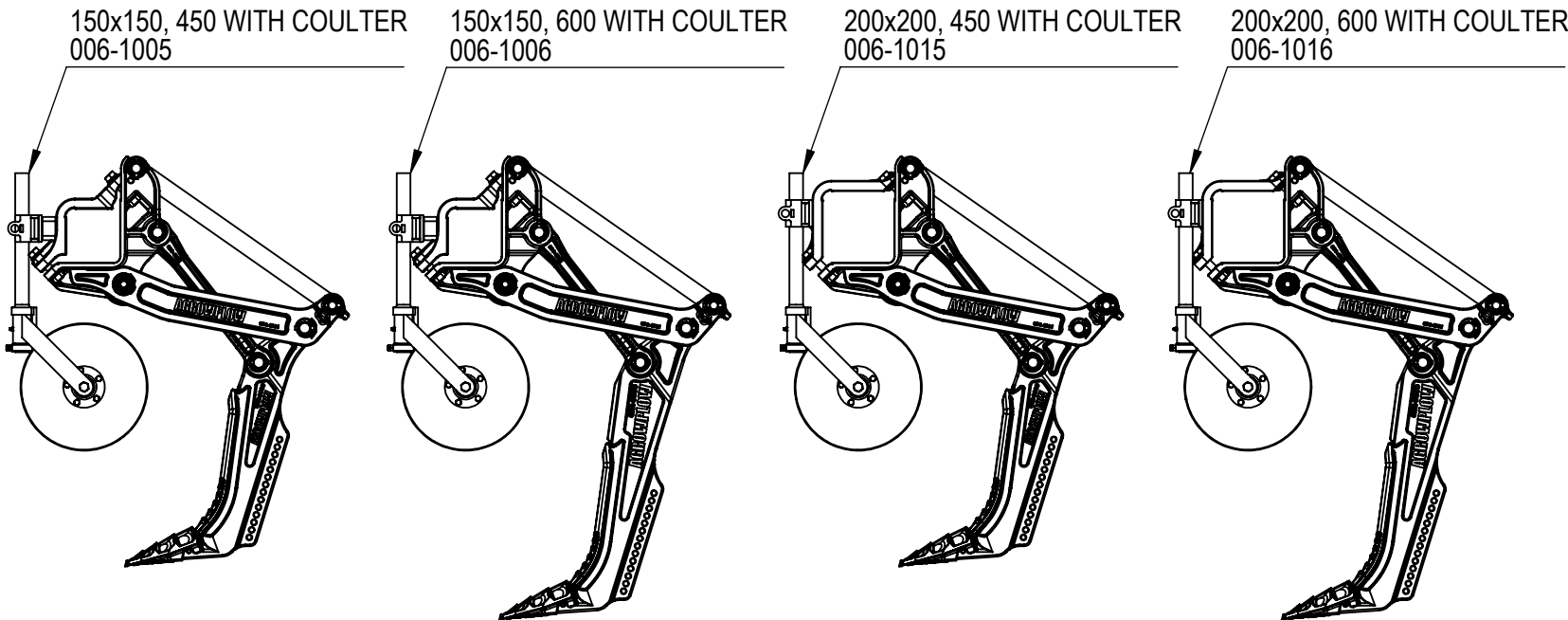
TITLE: **SUPERSEDED
HYDRAULIC
CYLINDER OPTIONS**
LAST PRINTED 3/06/2020

PART NUMBER
006-1000

SHEET: 1 OF 1
PAGE: 6

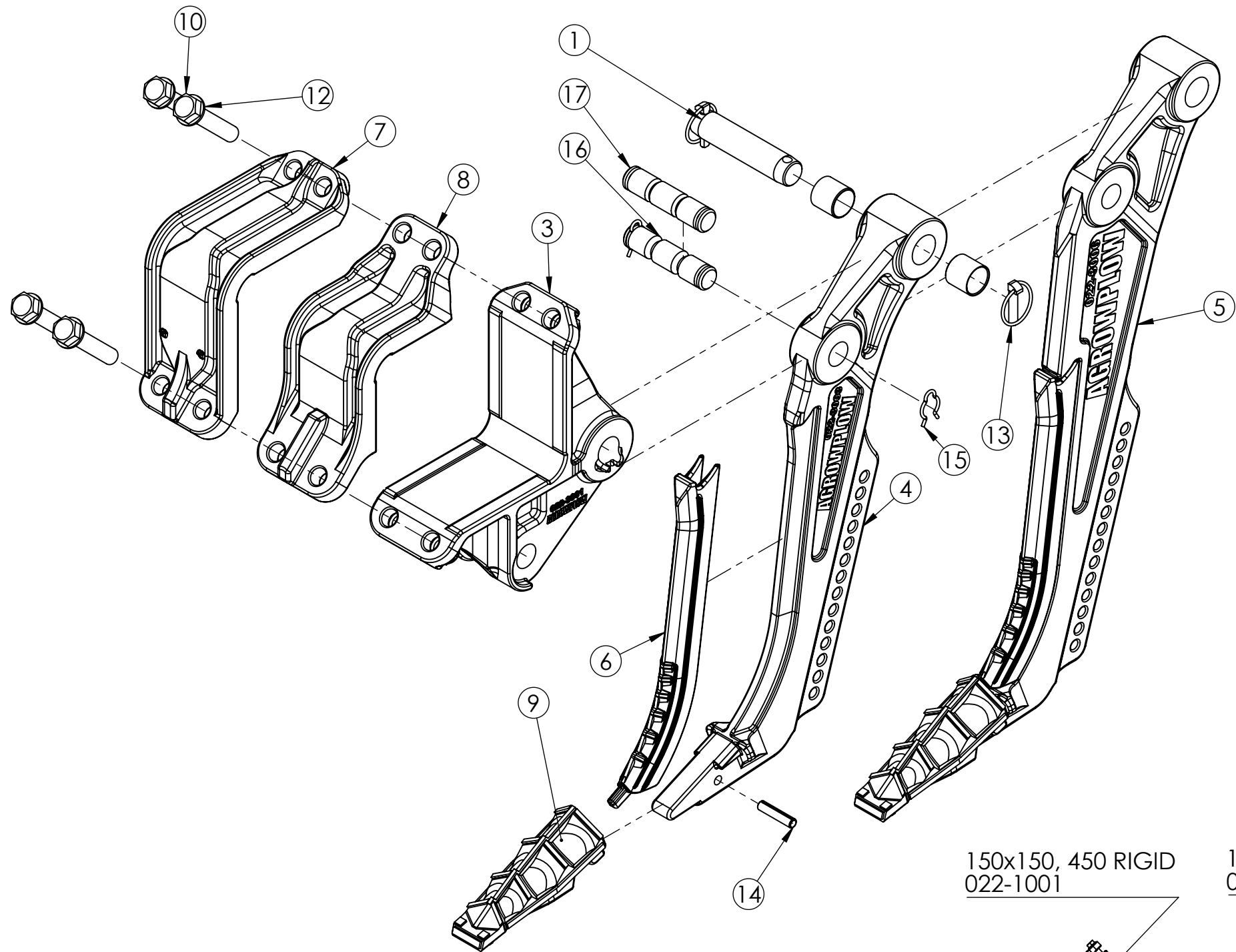


ITEM NO.	PART NUMBER	DESCRIPTION	Default/QTY.
1	006-3001	#9v2 HYD SHANK CHOCK	1
2	006-4002	SHANK #9, HYDRAULIC SUPPORT ARM	1
3	006-4006	SHANK #9 PIVOT PIN HYDRAULIC	1
4	006-4020	BUSH SLEEVE STEEL ID35 OD39 Length 35mm	2
5	006-4025	SHANK #9v2, HYDRAULIC SWING ARM	1
6	006-4032	SPHERICAL BEARING	2
7	006-4033	#9v2 ARM BOSS TO SECURE SPHERICAL BUSHES	2
8	006-4034	SHANK #9, CARRIER HYDRAULIC	1
9	006-4035	#9 SHANK HYDRAULIC CYLINDER PIN	1
10	022-2001	SHANK #9, CLAMP 150x150 with COULTER	1
11	022-2002	SHANK #9, CLAMP 200x200 with COULTER	1
12	022-3003	SHANK #9, 450	1
13	022-3006	SHANK #9, 600	1
14	022-3007	SHINGUARD #9 SHANK	2
15	122-1005	#9 BLADE TUNGSTEN TOE WITH HARDFACING	2
16	133-4114	M20 x 100 HEX BOLT ZINC GR8.8	4
17	134-1045	M20 HEX NUT ZINC PLATED GR 8.8	4
18	134-1046	M20 HEX NYLOCK NUT ZINC PLATED GR 8.8	1
19	135-1015	SPRING WASHER M20	5
20	135-3040	WASHER FLAT M20	4
21	140-0004	PIN CLEVIS 1" 115mm CAT 2 TOP	1
22	140-0041	LYNCHPIN 11mm 42mm	9
23	140-4087	ROLL PIN 12mm X 55mm	2
24	141-4016	#9 DOGBONE TO SHANK HARDENED PIN, SUITS HYD ASSEMBLY	2
25	190-0001	14" SWIVEL COULTER ASSEMBLY	1
26	202-0077	M20 x 180 HEX FLANGE BOLT ZINC GR 8.8	1



NOTES:
FOR FURTHER DETAIL SEE #9v2 HYD SHANK ASSEMBLY 006-1000
#9 RIGID SHANK ASSEMBLIES SEE 022-10##

AGROWFLOW <small>COPYRIGHT RESERVED THIS DRAWING IS THE PROPERTY AGROWFLOW PTY LTD, AND IS SUBJECT TO RETURN UPON DEMAND. IT IS SUBMITTED FOR USE ONLY IN CONNECTION WITH PROPOSALS OR CONTRACTS OF THIS ORGANISATION UPON THE EXPRESS CONDITION THAT IT IS NOT TO BE USED DIRECTLY OR INDIRECTLY IN ANY WAY DETRIMENTAL TO THE INTERESTS OF AGROWFLOW PTY LTD.</small>	TITLE: #9v2 HYDRAULIC SHANK ASSEMBLY CHOCKED RIGID	PART NUMBER 006-1000	
	LAST PRINTED 29-Oct-18 TOTAL MASS 108.80 Kg	 SHEET: 1 OF 1	PAGE: 7



ITEM NO.	PART NUMBER	DESCRIPTION	Default/QTY.
1	006-4006	SHANK #9 PIVOT PIN HYDRAULIC	1
2	006-4020	BUSH SLEEVE STEEL ID35 OD39 Length 35mm	2
3	022-3001	SHANK #9 CARRIER RIGID	1
4	022-3003	SHANK #9, 450	1
5	022-3006	SHANK #9, 600	1
6	022-3007	SHINGUARD #9 SHANK	2
7	022-3009	SHANK #9 TOP CLAMP 200x200	1
8	022-3010	SHANK #9, CLAMP 150X150	1
9	122-1005	#9 BLADE	2
10	133-4170	M20 x 100 HEX BOLT ZINC GR10.9	4
11	134-4110	M20 HEX NYLOCK NUT ZINC GR 10.9	4
12	135-3040	WASHER FLAT M20	4
13	140-0041	LYNCHPIN 11mm 42mm	2
14	140-4087	ROLL PIN 12mm X 55mm	2
15	141-0019	HAIRCLIP	2
16	141-4022	#9 SHEARPIN SUIT 150X150 RHS	1
17	141-4012	#9 SHEARPIN HD SUIT 200x200 RHS	1

150x150, 450 RIGID
022-1001

150x150, 600 RIGID
022-1003

200x200, 450 RIGID
022-1011

200x200, 600 RIGID
022-1013

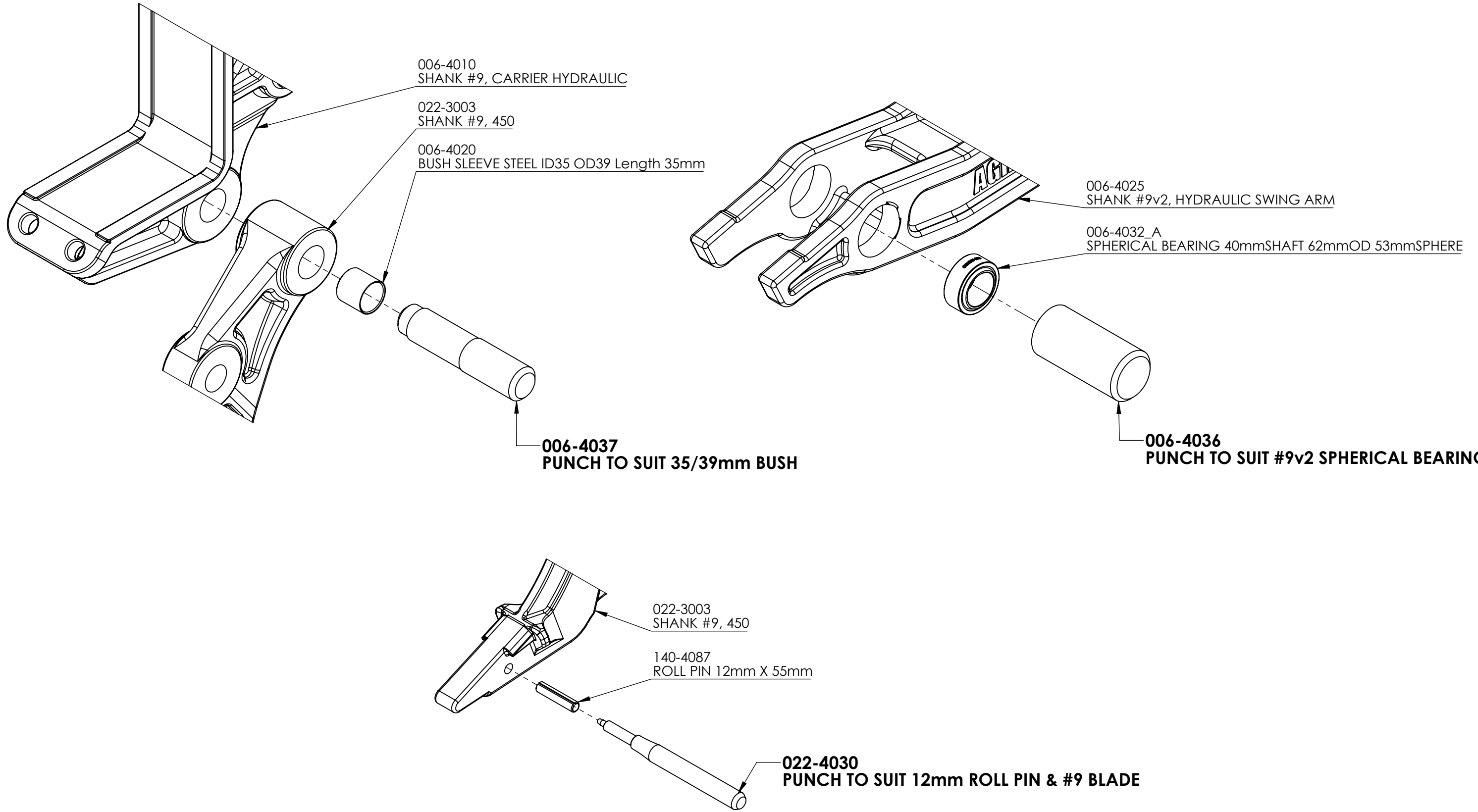
NOTE:
FOR COULTER OPTIONS SEE 006-10## SERIES, #9v2 HYDRAULIC SHANK
ASSEMBLY CHOCKED RIGID

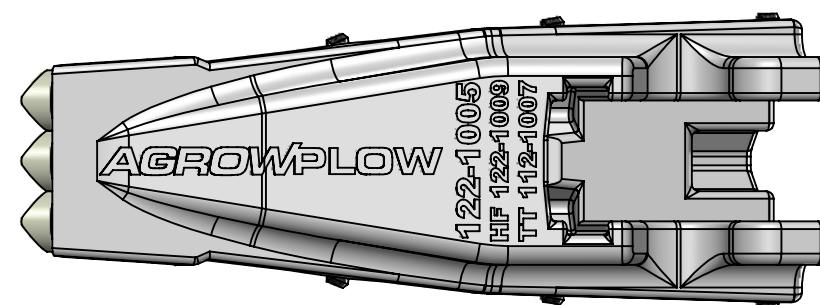
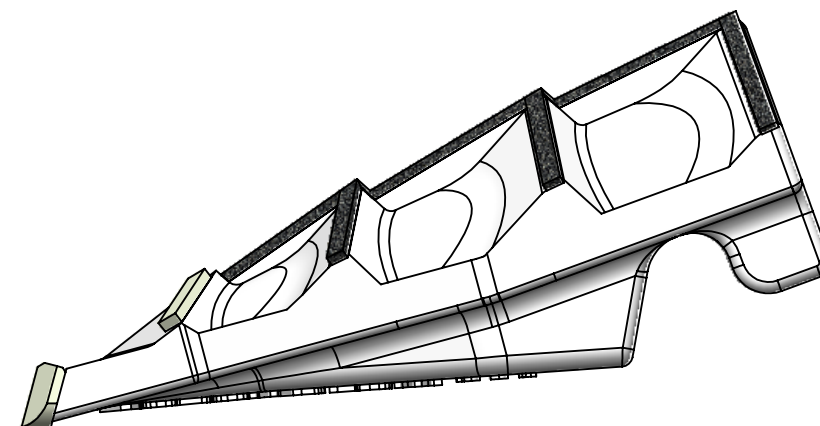
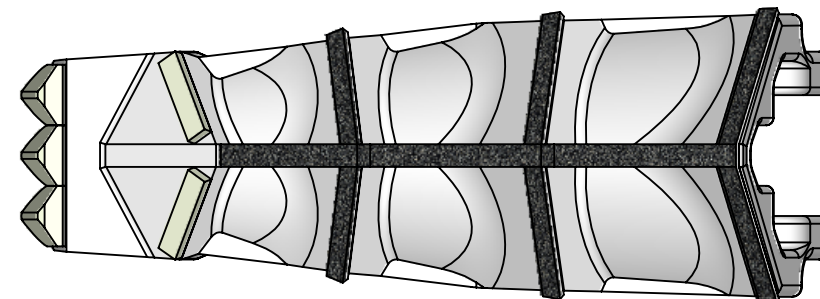
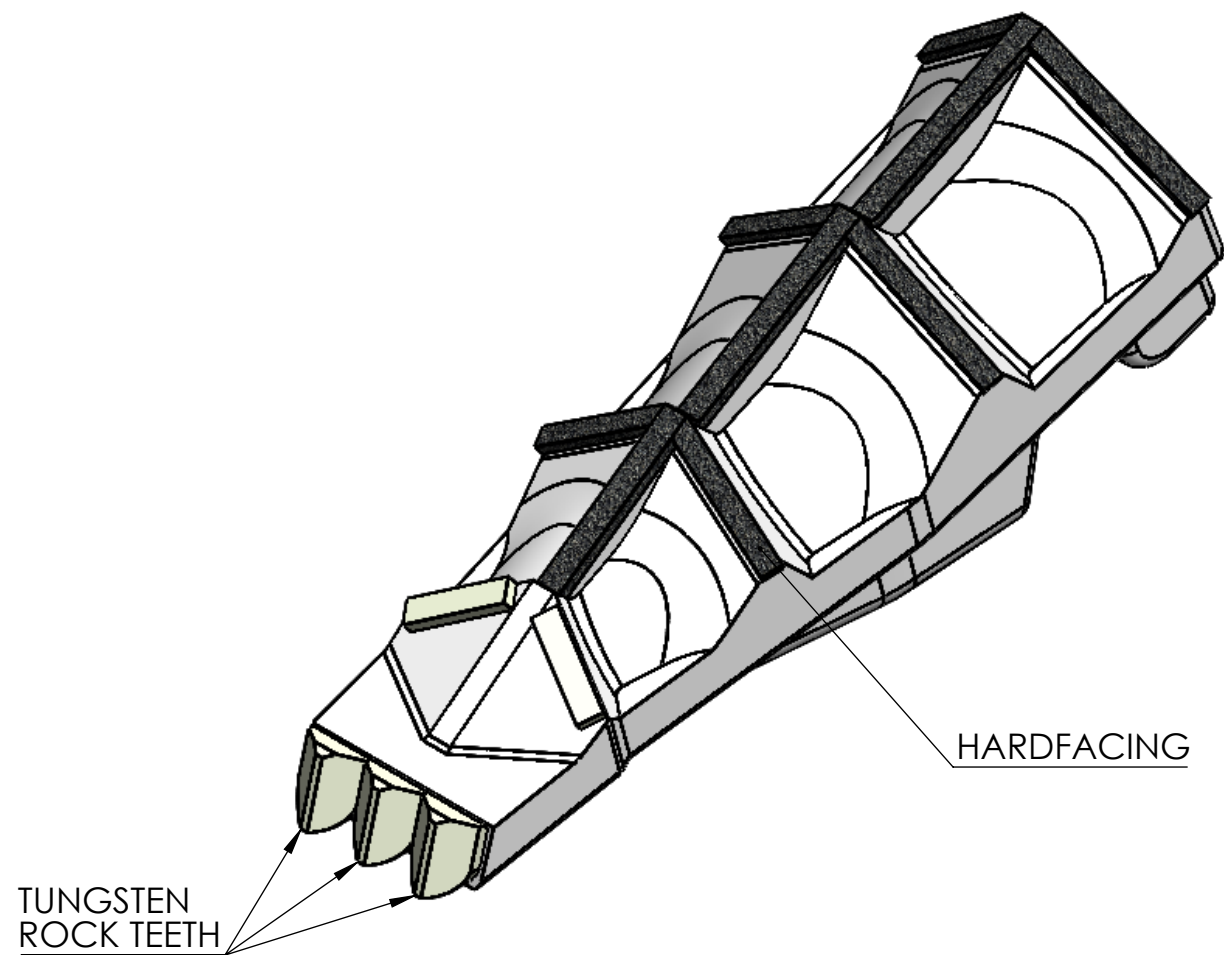
AGROWFLOW
COPYRIGHT RESERVED
THIS DRAWING IS THE PROPERTY AGROWFLOW PTY LTD, AND IS SUBJECT TO RETURN
UPON DEMAND. IT IS SUBMITTED FOR USE ONLY IN CONNECTION WITH PROPOSALS OR
CONTRACTS OF THIS ORGANISATION UPON THE EXPRESS CONDITION THAT IT IS NOT TO
BE USED DIRECTLY OR INDIRECTLY IN ANY WAY DETRIMENTAL TO THE INTERESTS OF
AGROWFLOW PTY LTD.

**#9v2 RIGID SHANK
ASSEMBLY**
LAST PRINTED 24/01/2020 TOTAL MASS 52.44 Kg

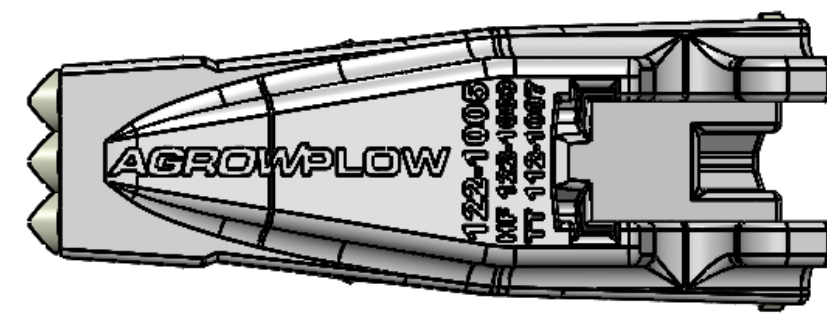
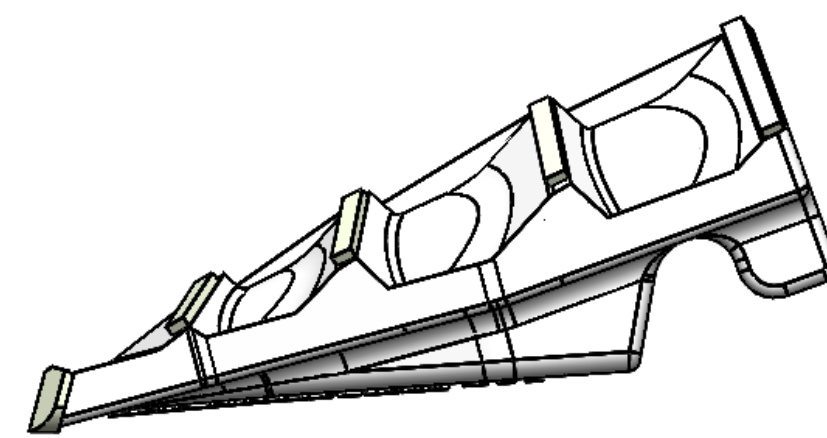
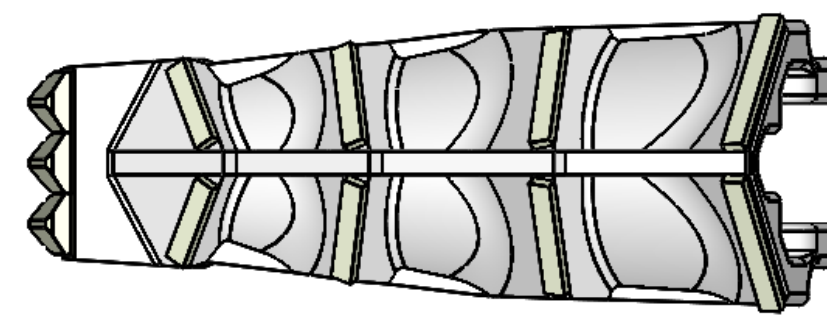
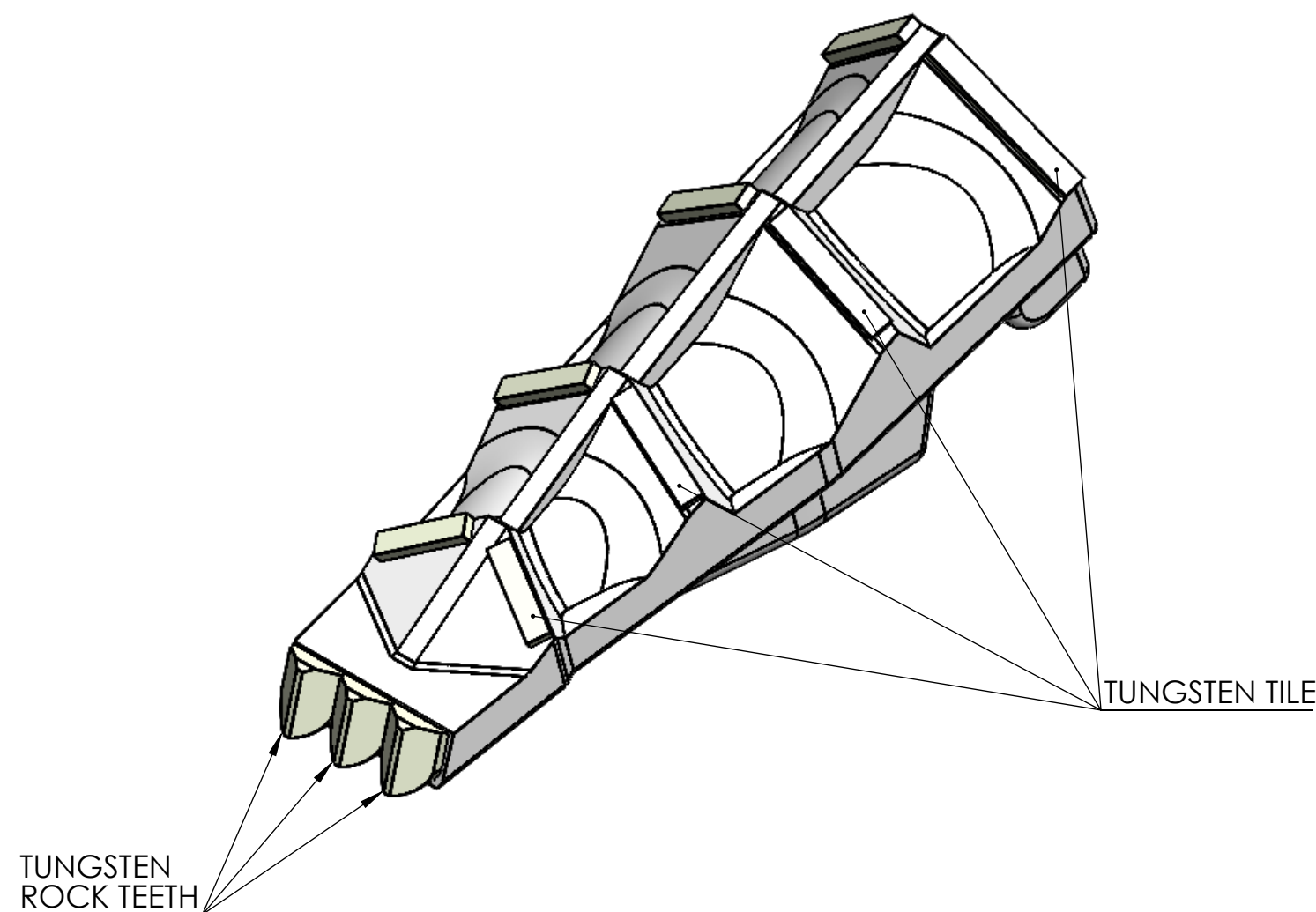
PART NUMBER
022-1000

 **SHEET:** 1 OF 1 **PAGE:** 8

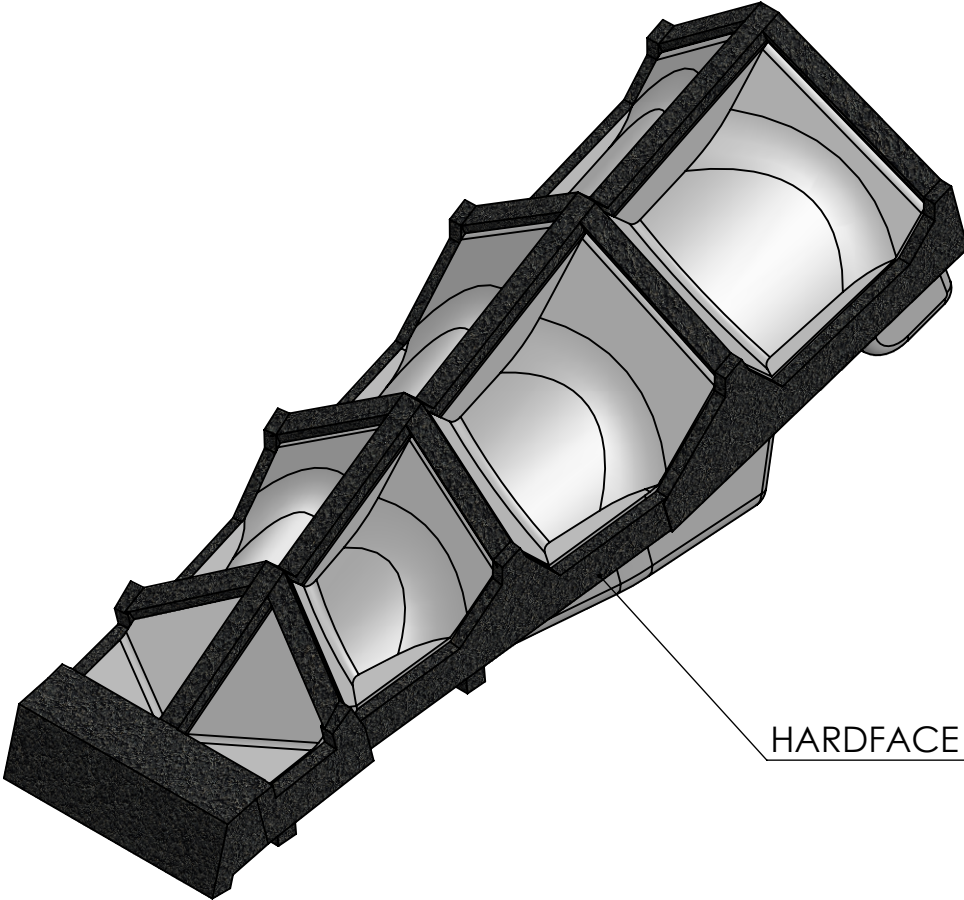




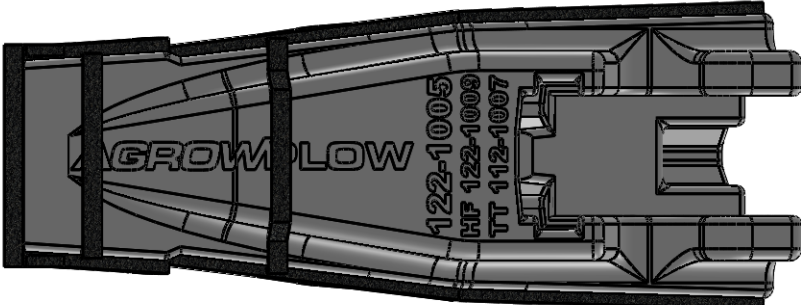
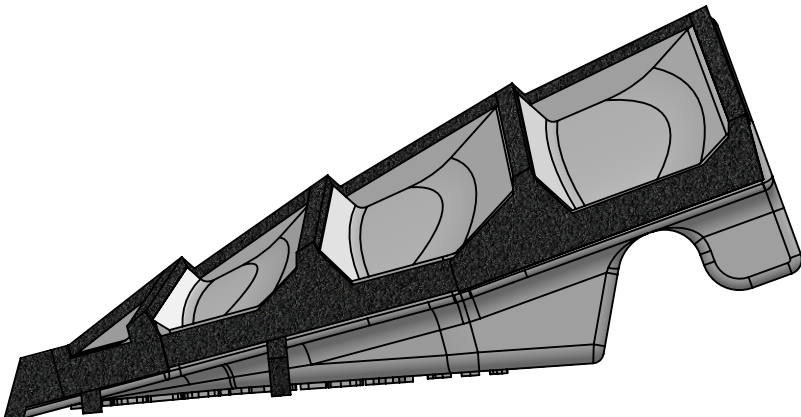
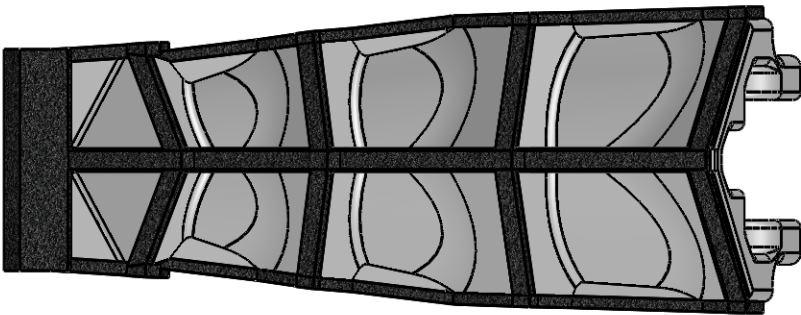
AGROWPLOW COPYRIGHT RESERVED THIS DRAWING IS THE PROPERTY AGROWPLOW PTY LTD, AND IS SUBJECT TO RETURN UPON DEMAND. IT IS SUBMITTED FOR USE ONLY IN CONNECTION WITH PROPOSALS OR CONTRACTS OF THIS ORGANISATION UPON THE EXPRESS CONDITION THAT IT IS NOT TO BE USED DIRECTLY OR INDIRECTLY IN ANY WAY DETRIMENTAL TO THE INTERESTES OF AGROWPLOW PTY LTD.		TITLE: BLADE #9 3 X ROCK TEETH, TUNGSTEN TILES AND TUNGSTEN HARDFACED LAST PRINTED 19-Nov-18	TOTAL MASS Kg	PART NUMBER 122-1014	SHEET: 1 OF 1	PAGE: 10
						



AGROWFLOW <small>COPYRIGHT RESERVED THIS DRAWING IS THE PROPERTY AGROWFLOW PTY LTD, AND IS SUBJECT TO RETURN UPON DEMAND. IT IS SUBMITTED FOR USE ONLY IN CONNECTION WITH PROPOSALS OR CONTRACTS OF THIS ORGANISATION UPON THE EXPRESS CONDITION THAT IT IS NOT TO BE USED DIRECTLY OR INDIRECTLY IN ANY WAY DETRIMENTAL TO THE INTERESTES OF AGROWFLOW PTY LTD.</small>		TITLE: BLADE #9 ROCK TEETH WITH TUNGSTEN TILES ALL OVER <small>LAST PRINTED 21-Nov-18</small>		PART NUMBER 122-1015 <small>SHEET: 1 OF 1</small>	
		TOTAL MASS Kg		PAGE: 11	



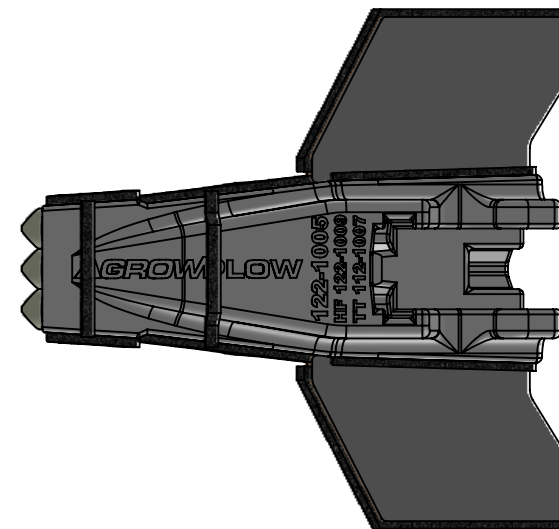
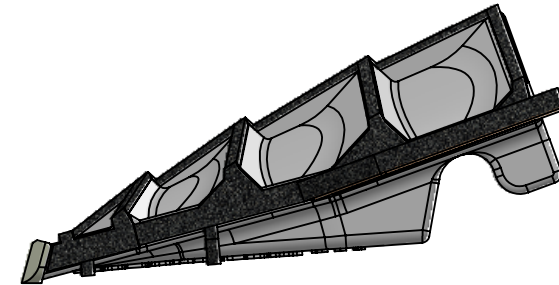
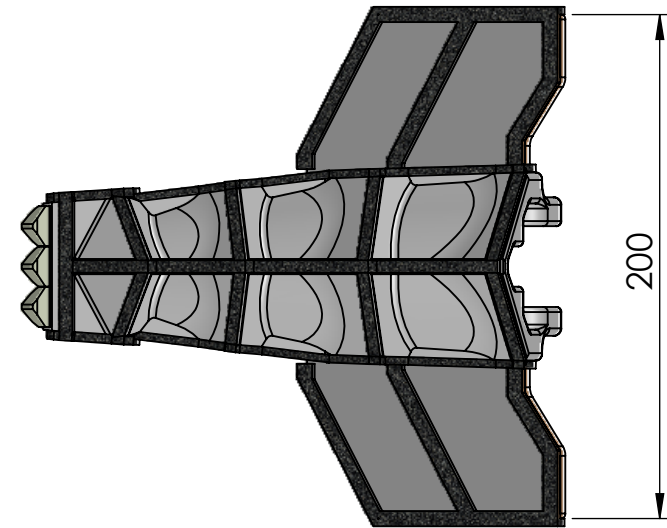
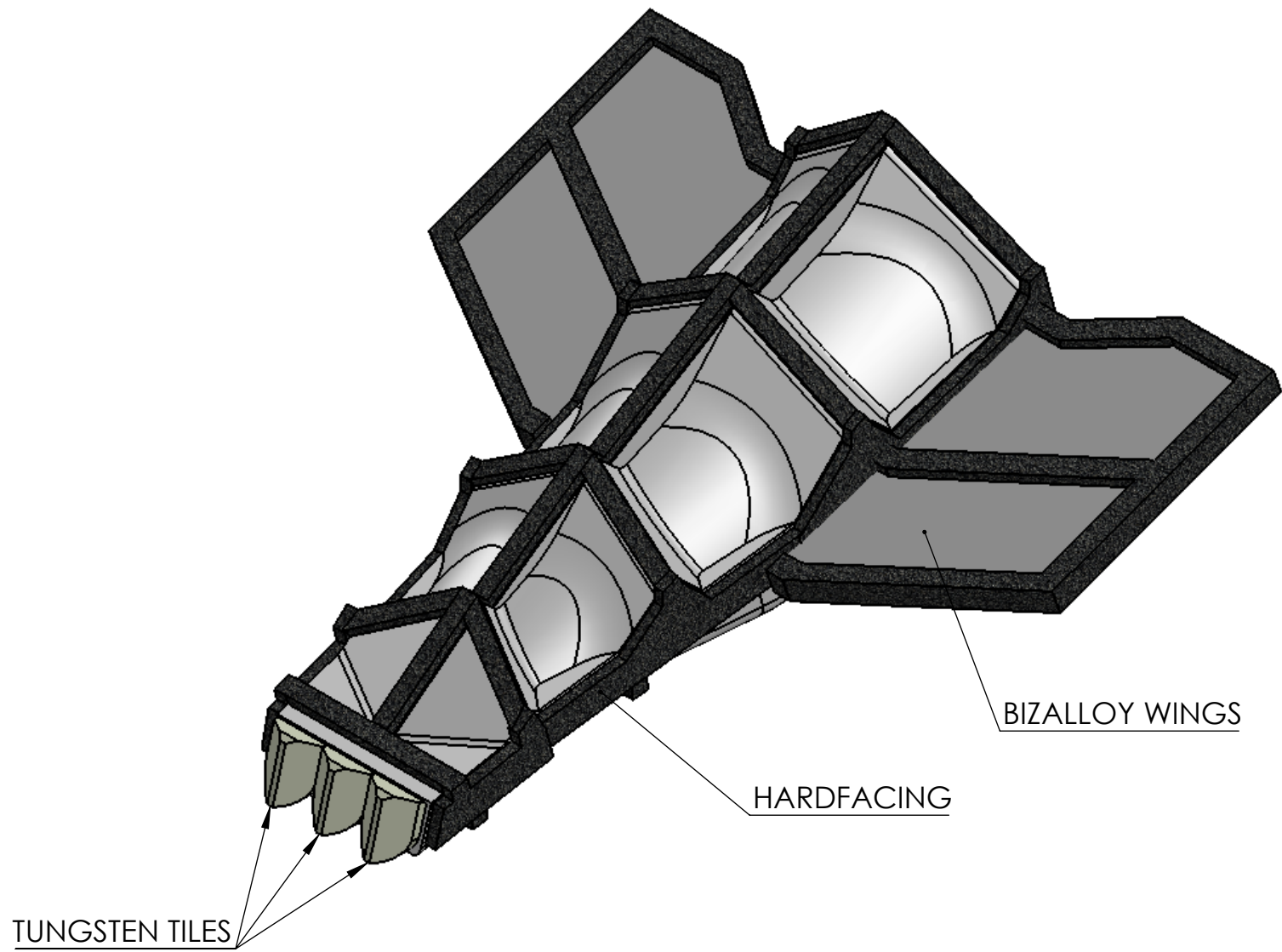
HARDFACE WELD



AGROWPLOW
<small>COPYRIGHT RESERVED THIS DRAWING IS THE PROPERTY AGROWPLOW PTY LTD, AND IS SUBJECT TO RETURN UPON DEMAND. IT IS SUBMITTED FOR USE ONLY IN CONNECTION WITH PROPOSALS OR CONTRACTS OF THIS ORGANISATION UPON THE EXPRESS CONDITION THAT IT IS NOT TO BE USED DIRECTLY OR INDIRECTLY IN ANY WAY DETRIMENTAL TO THE INTERESTS OF AGROWPLOW PTY LTD.</small>

TITLE: #9 BLADE HARDFACE ALL OVER
LAST PRINTED 18/10/2019
TOTAL MASS Kg

PART NUMBER 122-1009
SHEET: 1 OF 1
PAGE: 12



AGROWPLOW

COPYRIGHT RESERVED
THIS DRAWING IS THE PROPERTY AGROWPLOW PTY LTD, AND IS SUBJECT TO RETURN
UPON DEMAND. IT IS SUBMITTED FOR USE ONLY IN CONNECTION WITH PROPOSALS OR
CONTRACTS OF THIS ORGANISATION UPON THE EXPRESS CONDITION THAT IT IS NOT TO
BE USED DIRECTLY OR INDIRECTLY IN ANY WAY DETRIMENTAL TO THE INTERESTES OF
AGROWPLOW PTY LTD.

TITLE:

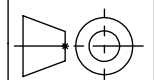
BLADE #9 Bialloy Wide Wing
3xTUNGSTEN TILES and
TUNGSTEN HARDFACED

LAST PRINTED 30-Oct-18

TOTAL MASS Kg

PART NUMBER

122-1011



SHEET:

1 OF 1

PAGE:

13