

Parts List			
ITEM	QTY	PART NUMBER	TITLE
1	1	141-4011	SHEAR PIN #8
2	1	121-2002	SHIN GUARD TO SUIT #8 SHANK
4	2	141-0019	HAIRCLIP
5	4	133-4023	BOLT - 3/4" x 6" UNC G8 ZINC
6	1	134-1070	NUT HEX 1" UNC ZINC
7	1	133-4060	BOLT 1" x 4"UNC G8 ZINC
8	1	002-1001	SHANK CARRIER #8 SHEAR PIN
9	1	121-1024	SHANK #8 24"
10	1	135-1040	WASHER SPRING 1" OD##xTHICK ZINC
11	1	002-2001	#8 CLAMP PLATE
12	4	134-1025	Nut Nylock - 3/4 UNC

POINT OPTIONS

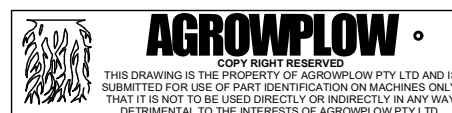
- 122-0035 HARD FACING
- 122-0033 TUNGSTEN TIP
- 122-2001 PLAIN POINT

COULTER OPTION

REFER TO COULTER PARTS BOOK

#9 SHANK UPGRADE

ASSEMBLY CAN BE UPGRADED TO SUIT #9 SHANK PARTS USING THE #8 HYBRID SHANK, SEE PAGE 4



PROJECT:
#8 SHANK ASSEMBLIES

DATE:
12-Aug-16

PART NUMBER:
120-0006

TITLE:
100 X 100 RIGID SHANK ASSEMBLY

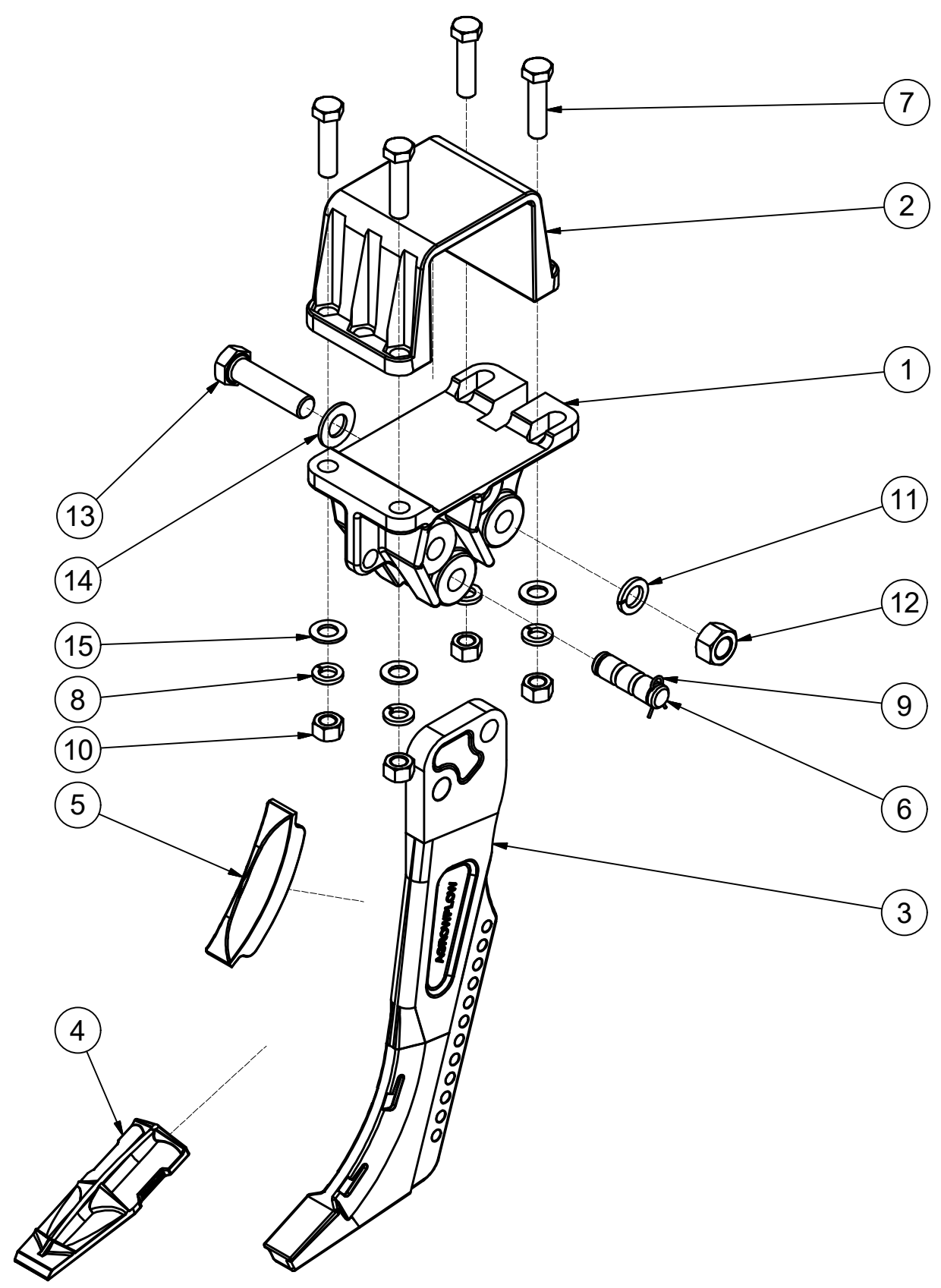
Page Number:
1 / 4

A

B

C

D

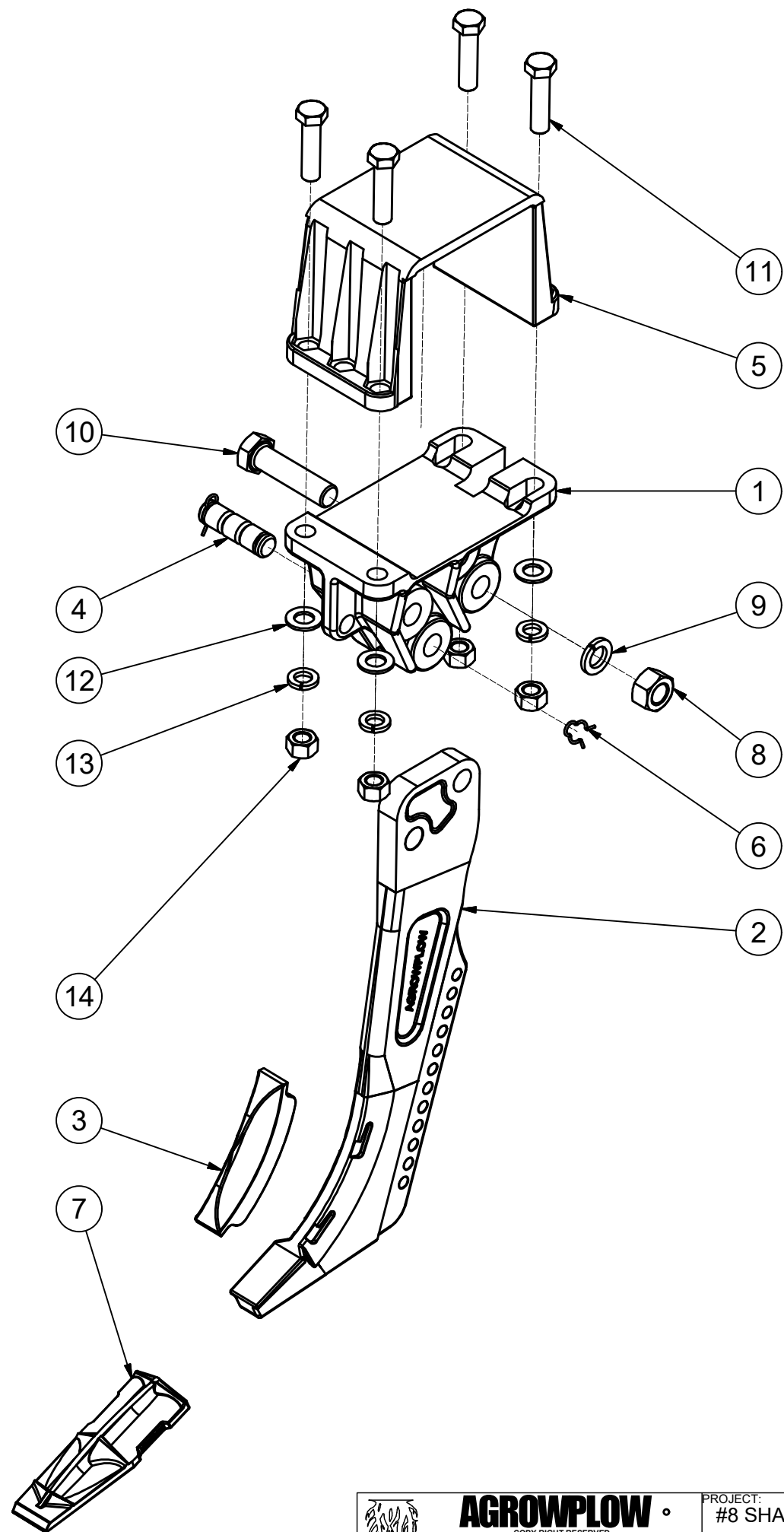


Parts List			
ITEM	QTY	PART NUMBER	TITLE
1	1	020-2004	SHANK CARRIER
2	1	020-2005	U CLAMP 6 X 6 150mm X 150mm
3	1	121-1024	SHANK #8 24"
4	1	122-2001	BLADE #8 PLAIN
5	1	121-2002	SHIN GUARD TO SUIT #8 SHANK
6	1	141-4011	SHEAR PIN #8
7	4	133-3080	BOLT 3/4" X 3" UNC
8	4	135-0090	WASHER SPRING 3/4" OD##xTHICK ZINC
9	2	141-0019	HAIRCLIP
10	4	134-1020	NUT HEX 3/4" UNC ZINC
11	1	135-1040	WASHER SPRING 1" OD##xTHICK ZINC
12	1	134-1070	NUT HEX 1" UNC ZINC
13	1	133-4060	BOLT 1" x 4"UNC G8 ZINC
14	1	135-1060	WASHER FLAT 1"
15	4	135-1010	FLAT WASHER 3/4"

POINT OPTIONS
 122-0035 HARD FACING
 122-0033 TUNGSTEN TIP
 122-2001 PLAIN POINT

NO COULTER FOR THIS ASSEMBLY

#9 SHANK UPGRADE
 ASSEMBLY CAN BE UPGRADED TO SUIT #9
 SHANK PARTS USING THE #8 HYBRID SHANK,
 SEE PAGE 4



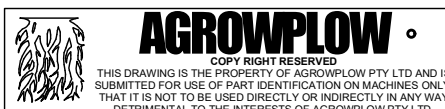
Parts List			
ITEM	PART NUMBER	TITLE	QTY
1	020-2004	SHANK CARRIER	1
2	121-1024	SHANK #8 24"	1
3	121-2002	SHIN GUARD TO SUIT #8 SHANK	1
4	141-4011	SHEAR PIN #8	1
5	020-2006	U-CLAMP 7"x7" 178mm x 178mm	1
6	141-0019	HAIRCLIP	2
7	122-2001	BLADE #8 PLAIN	1
8	134-1070	NUT HEX 1" UNC ZINC	1
9	135-1040	WASHER SPRING 1" OD##xTHICK ZINC	1
10	133-4060	BOLT 1" x 4"UNC G8 ZINC	1
11	133-3080	BOLT 3/4" X 3" UNC	4
12	135-1010	FLAT WASHER 3/4"	4
13	135-0090	WASHER SPRING 3/4" OD##xTHICK ZINC	4
14	134-1020	NUT HEX 3/4" UNC ZINC	4

POINT OPTIONS

- 122-0035 HARD FACING
- 122-0033 TUNGSTEN TIP
- 122-2001 PLAIN POINT

NO COULTER ON THIS OPTION

#9 SHANK UPGRADE
 ASSEMBLY CAN BE UPGRADED TO SUIT #9
 SHANK PARTS USING THE #8 HYBRID SHANK,
 SEE PAGE 4



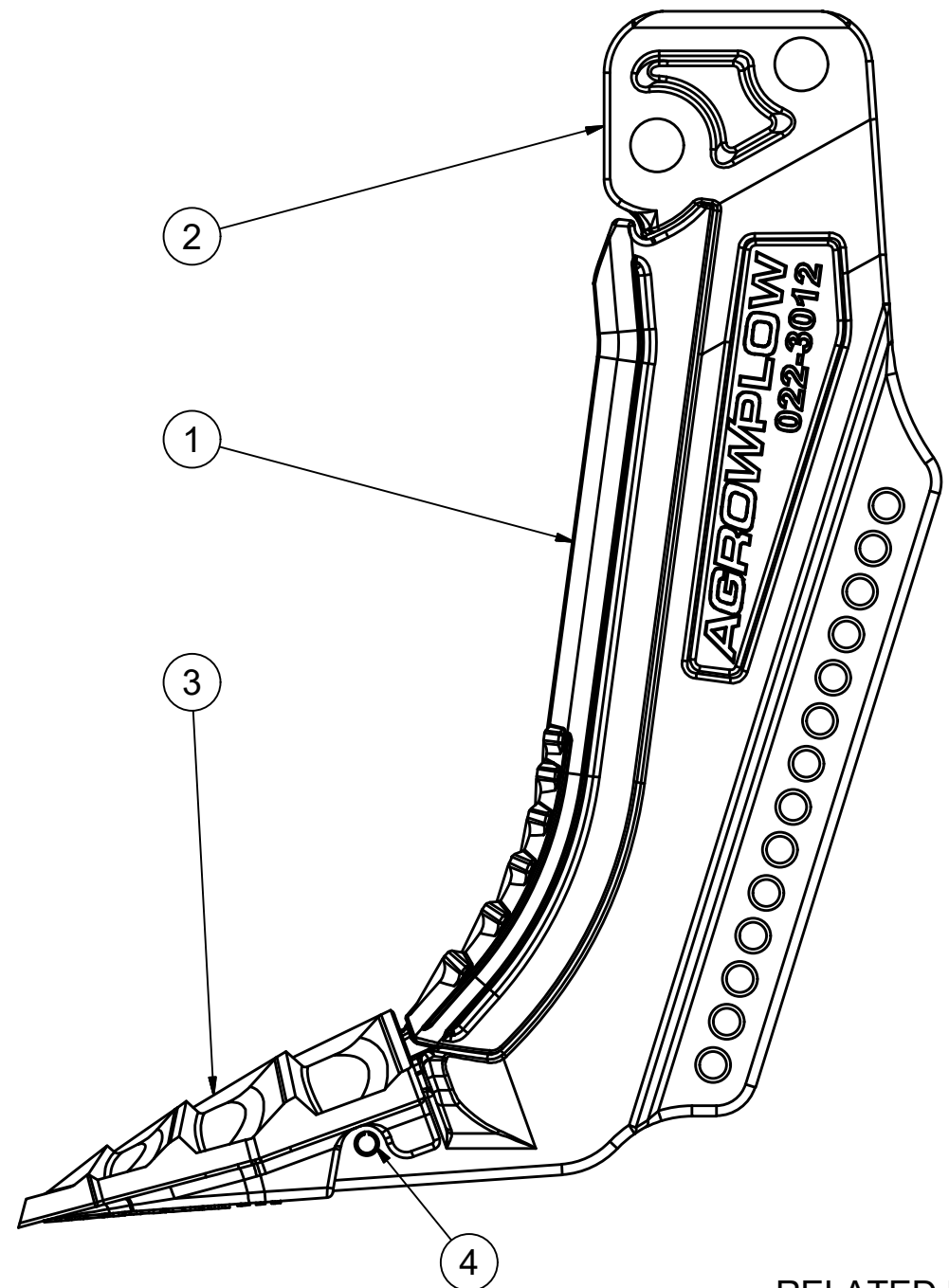
PROJECT:
#8 SHANK ASSEMBLIES
 DATE:
 12-Aug-16

PART NUMBER:
020-1000

TITLE:
RIGID SHANK 178 X 178

Page Number:
3 / 4

#8 SHANK HYBRID TO #9 SHANK			
ITEM	PART NUMBER	TITLE	QTY
1	022-3007	#9 LEG GUARD	1
2	022-3012	#9 SHANK HYBRID 24"	1
3	122-1004	RAZOR BACK BLADE, #9 SHANK	1
4	140-4087	ROLL PIN 12 x 55mm	1

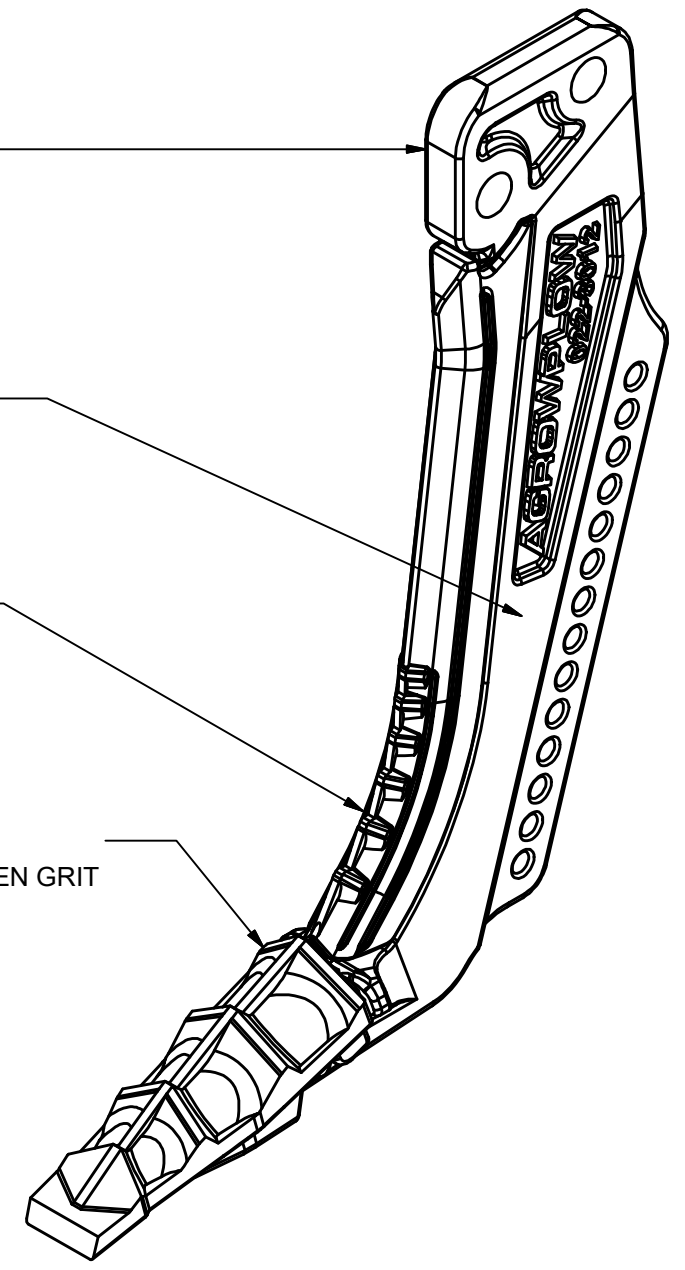


#8 SHANK MOUNTING, SUITS #8 SHANK CARRIERS

#9 SHANK LEG

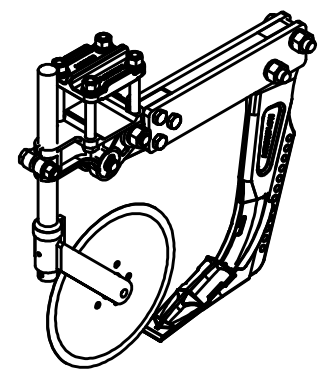
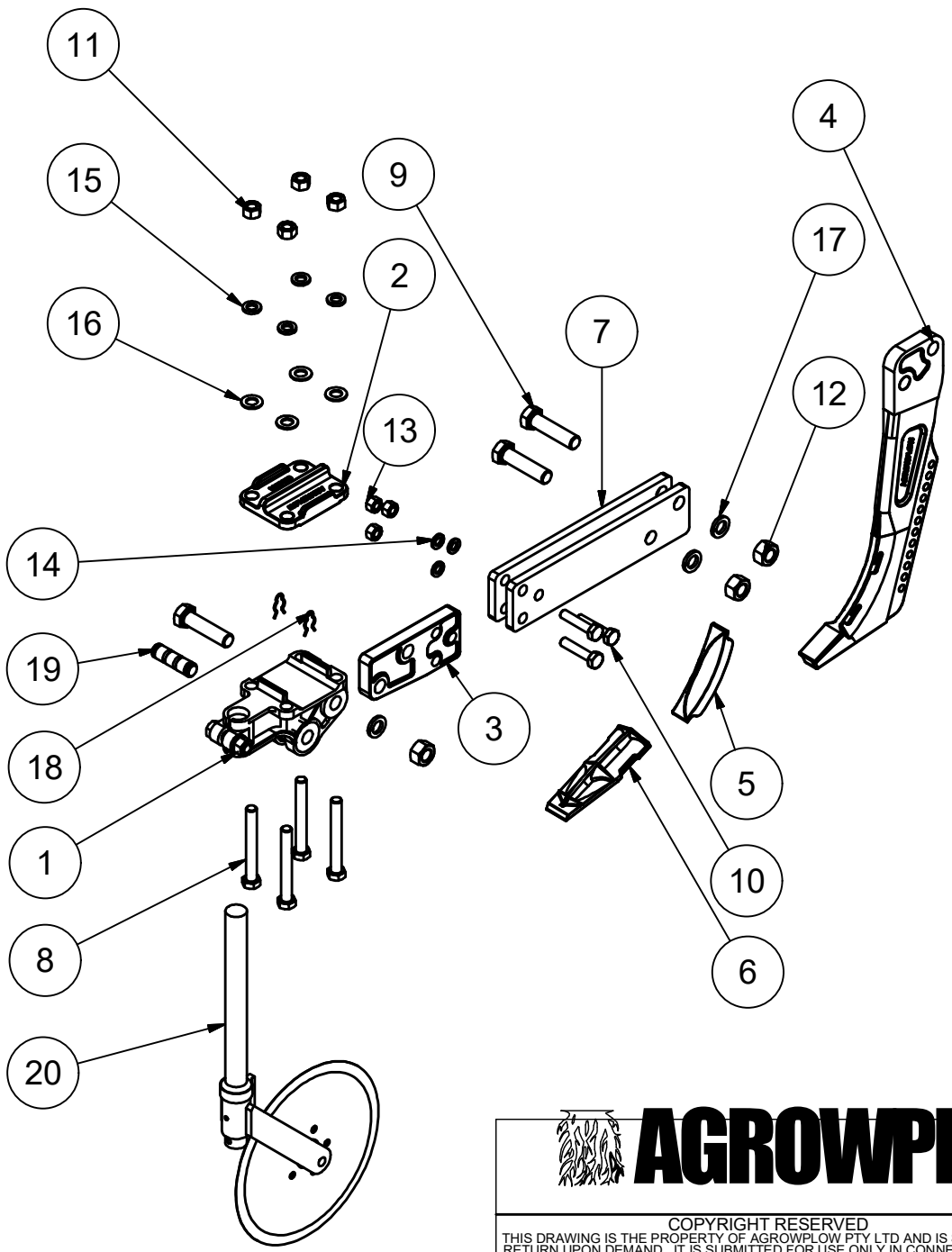
#9 SHANK FULL LENGTH LEG GUARD
 022-3007 #9 LEG GUARD
 022-3008 #9 LEG GUARD + HARDFACE WITH TUNGSTEN GRIT

#9 SHANK BLADE
 122-1005 #9 BLADE, (x3) TUNGSTEN TILES + HARDFACING WITH TUNGSTEN GRIT
 122-1007 #9 BLADE, (x17) TUNGSTEN TILES
 122-1008 #9 BLADE, (x3) TUNSTEN TILES
 122-1009 #9 BLADE, HARDFACING WITH TUNGSTEN GRIT ALL OVER



RELATED PART CODES
 120-0009 - MOUNTED SHANK ASSEMBLY, RIGID 100x100 #8 HYBRID 24"
 020-1007 - MOUNTED SHANK ASSEMBLY, RIGID 150x150 #8 HYBRID 24"
 020-1008 - MOUNTED SHANK ASSEMBLY, RIGID 178x178 #8 HYBRID 24"
 022-4030 - ROLL PIN PUNCH

ITEM	PART NUMBER	TITLE	QTY
1	002-1001	SHANK CARRIER #8 SHEAR PIN	1
2	002-2001	#8 CLAMP PLATE	1
3	002-2002	COULTER TONGUE	1
4	121-1024	SHANK #8 24"	1
5	121-2002	SHIN GUARD TO SUIT #8 SHANK	1
6	122-2001	BLADE #8 PLAIN	1
7	125-0027	COULTER SIDE PLATE, RIGID SHANK	2
8	133-4023	BOLT 3/4" x 6" UNC G8 ZINC	4
9	133-4060	BOLT 1" x 4" UNC G8 ZINC	3
10	133-4088	BOLT M16 x 75mm G8.8 ZINC	3
11	134-1020	NUT HEX 3/4" UNC ZINC	4
12	134-1070	NUT HEX 1" UNC ZINC	3
13	134-4022	NUT HEX M16 COURSE ZINC	3
14	135-0070	WASHER SPRING 5/8"	3
15	135-0090	WASHER SPRING 3/4" OD##xTHICK ZINC	4
16	135-1010	FLAT WASHER 3/4"	4
17	135-1040	WASHER SPRING 1" OD##xTHICK ZINC	3
18	141-0019	HAIRCLIP	2
19	141-4011	SHEAR PIN #8	1
20	190-0005	12" SWIVEL COULTER ASSEMBLY	1

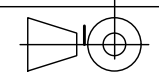


AGROWFLOW

COPYRIGHT RESERVED
THIS DRAWING IS THE PROPERTY OF AGROWFLOW PTY LTD AND IS SUBJECT TO RETURN UPON DEMAND. IT IS SUBMITTED FOR USE ONLY IN CONNECTION WITH PROPOSALS OR CONTRACTS OF THIS ORGANISATION UPON THE EXPRESS CONDITION THAT IT IS NOT TO BE USED DIRECTLY OR INDIRECTLY IN ANY WAY DETRIMENTAL TO THE INTERESTS OF AGROWFLOW PTY LTD.

100 x 100 RIGID SHANK ASSEMBLY WITH COULTER

PART NUMBER:
120-0006 AND 190-0005



SHEET
1 / 1