

ITEM NO.	PART NUMBER	DESCRIPTION	QTY
1	002-1001	SHANK CARRIER #8 SHEAR PIN	1
2	002-2001	#8 CLAMP PLATE 4X4	1
3	022-3007	SHINGUARD #9 SHANK	1
4	022-3012	SHANK #9 HYBRID TO SUIT #8 SHANK 24"	1
5	122-1013	#9 BLADE	1
6	133-4023	BOLT 3/4" x 6" UNC G8 Zinc	4
7	133-4060	BOLT 1" x 4" UNC G8 Zinc	1
8	134-1025	NUT NYLOCK 3/4" UNC ZINC	4
9	134-1070	NUT HEX 1" UNC ZINC	1
10	135-1040	WASHER SPRING 1"	1
11	140-4087	ROLL PIN 12mm X 55mm	1
12	141-0019	HAIR CLIP BIG B11	2
13	141-4011	SHEARPIN	1

<p>AGROWFLOW</p> <p><small>COPYRIGHT RESERVED</small></p> <p><small>THIS DRAWING IS THE PROPERTY AGROWFLOW PTY LTD, AND IS SUBJECT TO RETURN UPON DEMAND. IT IS SUBMITTED FOR USE ONLY IN CONNECTION WITH PROPOSALS OR CONTRACTS OF THIS ORGANISATION UPON THE EXPRESS CONDITION THAT IT IS NOT TO BE USED DIRECTLY OR INDIRECTLY IN ANY WAY DETRIMENTAL TO THE INTERESTES OF AGROWFLOW PTY LTD.</small></p>	<p>TITLE: #8 HYBRID SHANK ASSEMBLY</p>	<p>PART NUMBER 120-0009</p>
	<p>LAST PRINTED 9/10/2019</p>	<p>TOTAL MASS 32.00 Kg</p>

A

B

C

D

A

B

C

D

1

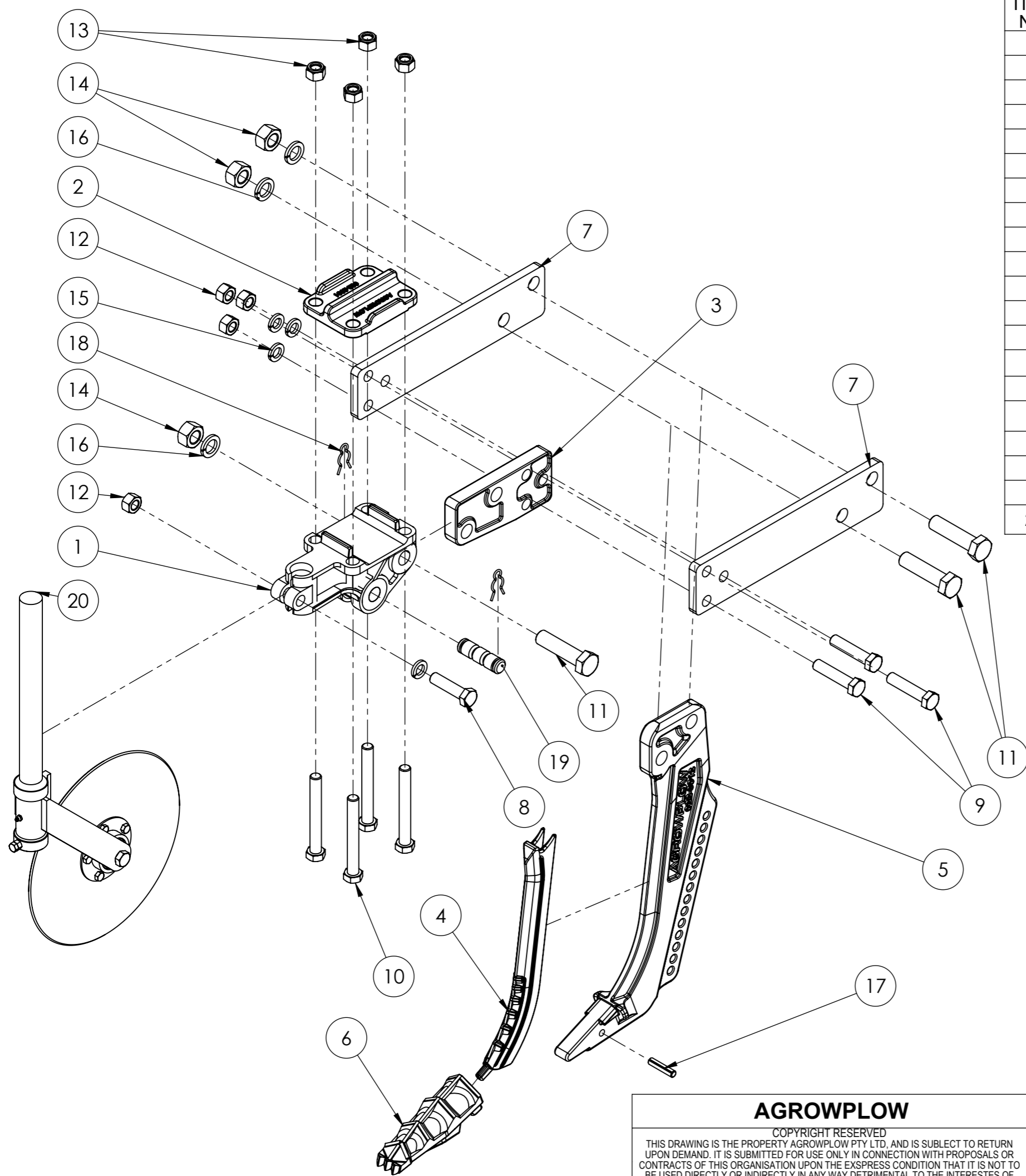
2

3

4

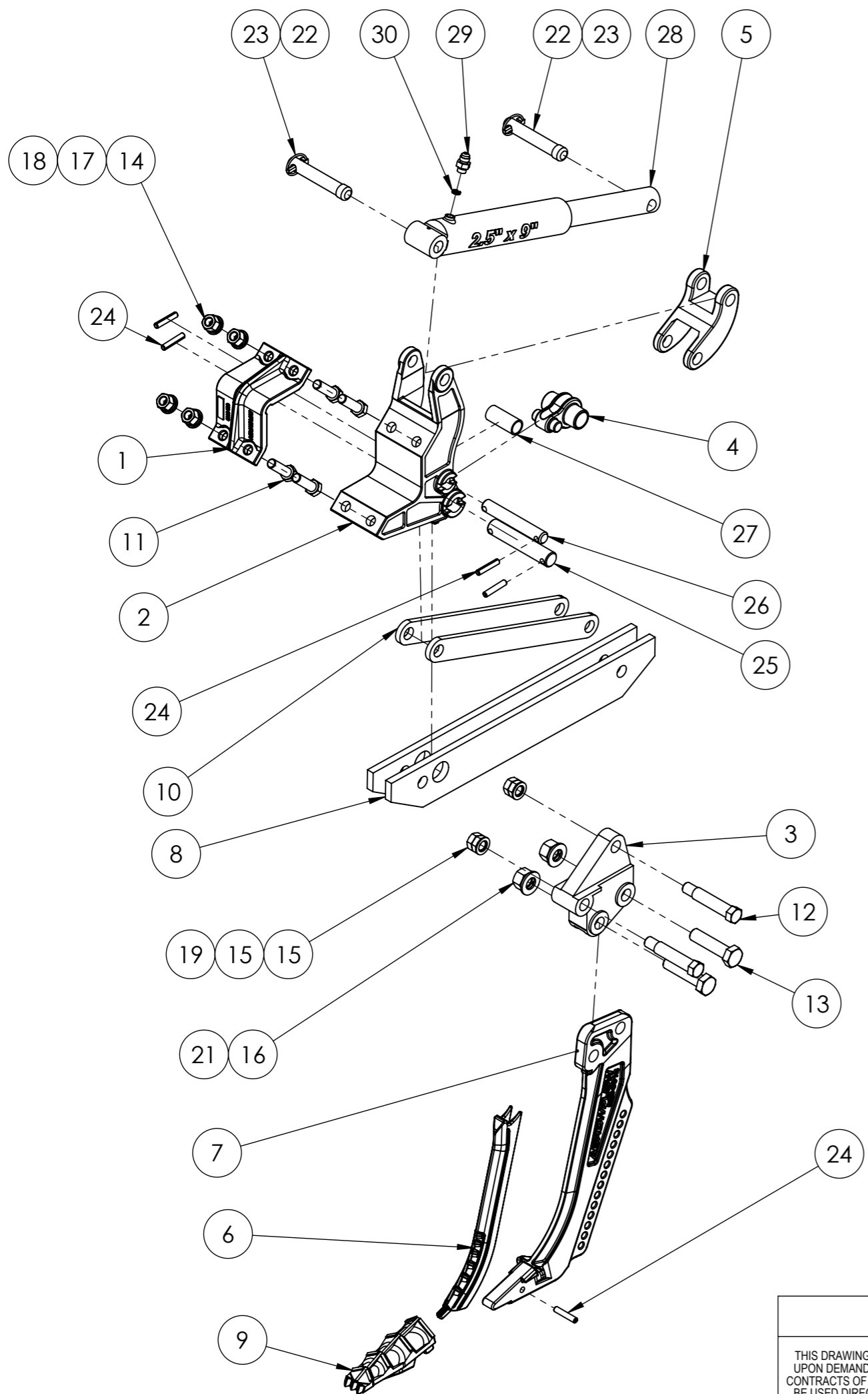
5

6



ITEM NO.	PART NUMBER	DESCRIPTION	QTY
1	002-1001	SHANK CARRIER #8 SHEAR PIN	1
2	002-2001	#8 CLAMP PLATE 4X4	1
3	002-2002	COULTER TONGUE	1
4	022-3007	SHINGUARD #9 SHANK	1
5	022-3012	SHANK #9 HYBRID TO SUIT #8 SHANK 24"	1
6	122-1013	#9 BLADE	1
7	125-0027	COULTER SIDE PLATE RIDGED SHANK	2
8	133-3080	BOLT 3/4" x 3" UNC G8 Zinc	1
9	133-3090	BOLT 3/4" x 3.1/2" UNC G8 Zinc	3
10	133-4023	BOLT 3/4" x 6" UNC G8 Zinc	4
11	133-4060	BOLT 1" x 4" UNC G8 Zinc	3
12	134-1020	NUT HEX 3/4" UNC ZINC	4
13	134-1025	NUT NYLOCK 3/4" UNC ZINC	4
14	134-1070	NUT HEX 1" UNC ZINC	3
15	135-0090	WASHER SPRING 3/4"	4
16	135-1040	WASHER SPRING 1"	3
17	140-4087	ROLL PIN 12mm X 55mm	1
18	141-0019	HAIR CLIP BIG B11	2
19	141-4011	SHEARPIN	1
20	190-0001	14" SWIVEL COULTER ASSEMBLY	1

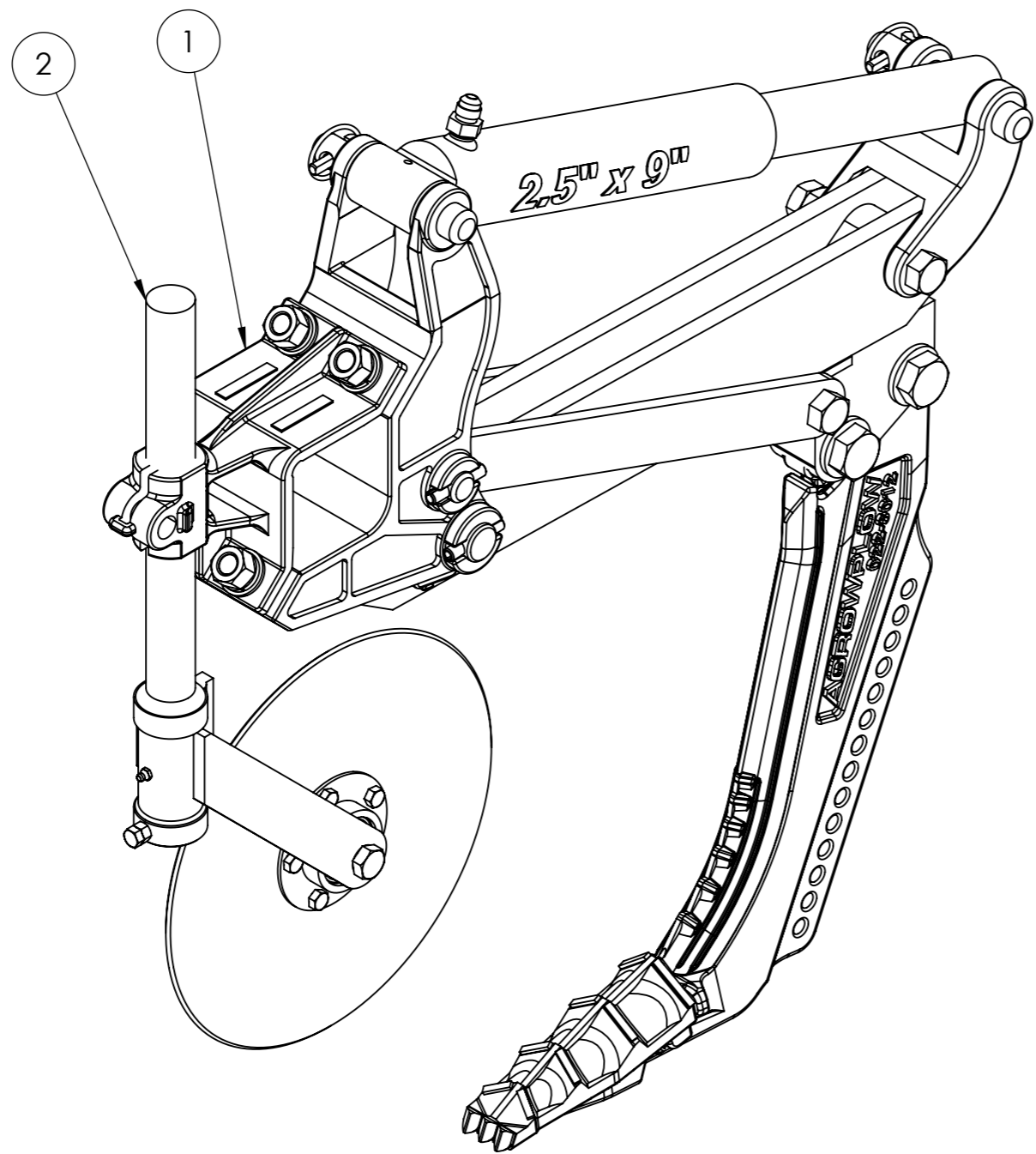
<p align="center">AGROWFLOW</p> <p align="center">COPYRIGHT RESERVED</p> <p align="center">THIS DRAWING IS THE PROPERTY AGROWFLOW PTY LTD, AND IS SUBJECT TO RETURN UPON DEMAND. IT IS SUBMITTED FOR USE ONLY IN CONNECTION WITH PROPOSALS OR CONTRACTS OF THIS ORGANISATION UPON THE EXPRESS CONDITION THAT IT IS NOT TO BE USED DIRECTLY OR INDIRECTLY IN ANY WAY DETRIMENTAL TO THE INTERESTES OF AGROWFLOW PTY LTD.</p>	<p>TITLE:</p> <p align="center">#8 HYBRID SHANK COULTER ASSEMBLY</p>	<p>PART NUMBER</p> <p align="center">120-0012</p>
	<p>LAST PRINTED 9/10/2019</p>	<p>TOTAL MASS 56.83 Kg</p>



ITEM NO.	PART NUMBER	DESCRIPTION	QTY
1	002-3003	CLAMP PLATE 4x4	1
2	005-1002	PIVOT CLAMP 4 x 4 HYD	1
3	005-2001	SHANK CARRIER #8 HYDRAULIC	1
4	005-3002	RECOIL BUSH	1
5	005-3004	CYLINDER YOKE	1
6	022-3007	SHINGUARD #9 SHANK	1
7	022-3012	SHANK #9 HYBRID TO SUIT #8 SHANK 24"	1
8	107-3053	SIDE PLATE HYDRAULIC RELEASE	2
9	122-1015	#9 BLADE	1
10	125-3052	CONTROL ARM	2
11	133-3021	BOLT 3/4" x 2.1/2" UNC G8 Zinc	4
12	133-4030	BOLT (SHOULDER 1") 3/4" x 5" UNC G10.9 Zinc	2
13	133-4060	BOLT 1" x 4" UNC G8 Zinc	2
14	134-1020	NUT HEX 3/4" UNC ZINC	4
15	134-1060	NUT HALF 7/8" UNC ZINC	4
16	134-1070	NUT HEX 1" UNC ZINC	2
17	135-0090	WASHER SPRING 3/4"	4
18	135-1010	WASHER FLAT 3/4"	4
19	135-1020	WASHER FLAT 7/8"	2
20	135-1040	WASHER SPRING 1"	2
21	135-1060	1" FLAT WASHER	2
22	140-0004	PIN CLEVIS 1" 115mm CAT 2 TOP	2
23	140-0039	LINCH PIN 11mm 32mm	2
24	140-1015	ROLL PIN 7/16" x 2 1/4"	5
25	140-4029	PIVOT PIN	1
26	140-4032	CONTROL ARM PIN	1
27	142-0002	SPACER BUSH (HYD SHK ASY)	1
28	153-4200	HYD JUMP CYLINDER 2.1/2" Bore 9" Rod Displacement	1
29	154-0019	HYD ADAPTOR 3/4" UNO TO 3/4" JIC	1
30	154-4260	HYD ORIFICE RESTRICTOR PLATE, VALVED FLOW RESTRICTOR	1

AGROWFLOW COPYRIGHT RESERVED THIS DRAWING IS THE PROPERTY AGROWFLOW PTY LTD, AND IS SUBJECT TO RETURN UPON DEMAND. IT IS SUBMITTED FOR USE ONLY IN CONNECTION WITH PROPOSALS OR CONTRACTS OF THIS ORGANISATION UPON THE EXPRESS CONDITION THAT IT IS NOT TO BE USED DIRECTLY OR INDIRECTLY IN ANY WAY DETRIMENTAL TO THE INTERESTES OF AGROWFLOW PTY LTD.	TITLE: SHANK ASSEMBLY #8 HYDRAULIC 100x100 24 INCH HYBRID	PART NUMBER 120-0008
	LAST PRINTED 10/10/2019 TOTAL MASS Kg	

ITEM NO.	PART NUMBER	DESCRIPTION	WITH COULTER/QTY.
1	005-3008	4 x 4 COULTER CLAMP	1
2	190-0001	14" SWIVEL COULTER ASSEMBLY	1



<p>AGROWFLOW</p> <p><small>COPYRIGHT RESERVED</small></p> <p><small>THIS DRAWING IS THE PROPERTY AGROWFLOW PTY LTD, AND IS SUBJECT TO RETURN UPON DEMAND. IT IS SUBMITTED FOR USE ONLY IN CONNECTION WITH PROPOSALS OR CONTRACTS OF THIS ORGANISATION UPON THE EXPRESS CONDITION THAT IT IS NOT TO BE USED DIRECTLY OR INDIRECTLY IN ANY WAY DETRIMENTAL TO THE INTERESTES OF AGROWFLOW PTY LTD.</small></p>	<p>TITLE:</p> <p>SHANK ASSEMBLY #8</p> <p>HYDRAULIC 100x100</p> <p>24 INCH HYBRID</p> <p><small>LAST PRINTED 10/10/2019</small></p>	<p>PART NUMBER</p> <p>120-0008</p>
	<p><small>THIS DRAWING IS THE PROPERTY AGROWFLOW PTY LTD, AND IS SUBJECT TO RETURN UPON DEMAND. IT IS SUBMITTED FOR USE ONLY IN CONNECTION WITH PROPOSALS OR CONTRACTS OF THIS ORGANISATION UPON THE EXPRESS CONDITION THAT IT IS NOT TO BE USED DIRECTLY OR INDIRECTLY IN ANY WAY DETRIMENTAL TO THE INTERESTES OF AGROWFLOW PTY LTD.</small></p>	<p>SHEET: 2 OF 2</p> <p>PAGE:</p>