

THE MANHOLE INSPECTION REVOLUTION

360°/3D Manhole Scanners

WHY SCAN?

EFFICIENCY

- A 50-foot structure top-to-bottom scan in 4 minutes
- Simplified data collection

SAFETY

- No manned-entry
- Minimizes public risk when the structure is open

QUALITY

- Record 100% of the structure
- Measure 100% of the structure
- Visual data reviewable anytime, on demand

DECISION-MAKING

- Confident maintenance spending and planning
- Images and results easily port to your GIS, CAD, and asset management platforms



IMAGINE YOUR MANHOLE STRUCTURE CONDITION DATA AND MEASUREMENTS CAPTURED IN FOUR MINUTES, PRODUCING EASILY RETRIEVABLE DATA FOR FUTURE CAPITAL PLANNING, MAINTENANCE PROGRAMS, AND LONG-TERM MANAGEMENT.

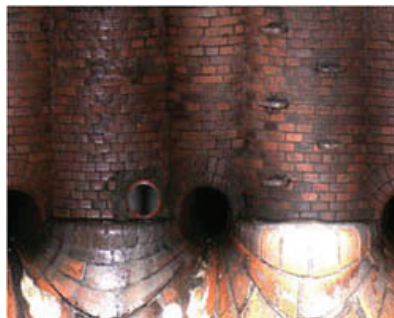
RJN Group is leading the adoption of emerging 360°/3D manhole scanning technologies, changing the FACE and PACE of the structure inspection world. These scanners offer measurable advantages for you, as collection system owners and operators.

The 3D scanners quickly produce highly detailed images of the interior of a manhole structure. The clarity of captured imagery renders the detail needed to assess structural conditions with tools to capture concise measurements without manned-entry. At the click of a mouse, you can virtually enter the manhole to clearly understand your system assets and plan for future needs.

VIRTUALLY ENTER THE MANHOLE

VIRTUAL ENTRY: NO GOGGLES

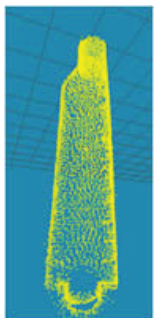
Advanced 3D technology creates detailed 360° views of every interior surface of the structure with a geometric view for measurements.



Unfolded View



360° Perspective



Geometric View



THE DIFFERENCE IS THE DETAILS

The level of detail produced by the scanners is unsurpassed. Every surface is photo-documented from every angle, recording structural attributes and defects. Live digital feed with pan, rotate, and zoom capabilities promotes on-site quality checks during camera runs.



ACCESSIBILITY AND PORTABILITY

Difficult-to-reach sites or rugged terrain are no longer challenges. The highly portable scanners are light and flexible, transportable to sites by two-man field crews or rigged to an off-road vehicle.



DATA WORKING FOR YOU

Industry standard NASSCO MACP condition ratings can be assigned and quality-checked in the office, minimizing errors. All data easily retrievable when needed to make critical maintenance and planning decisions.



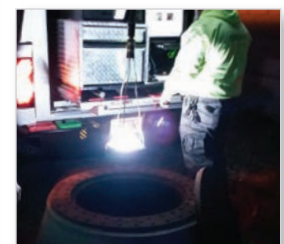
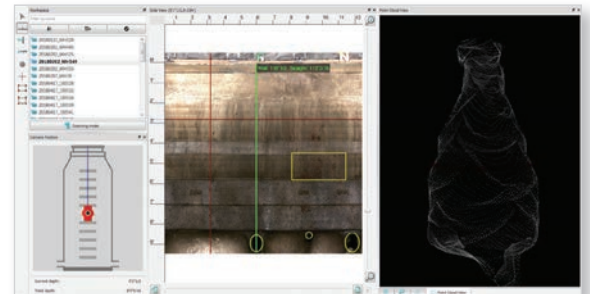
SAFETY MINIMIZES RISKS

Manhole scanners, in a single 4-minute scan, produce quality data efficiently without requiring manned-entry into a hazardous, confined space work site. Faster inspections also minimize the amount of time structures are open, posing a risk to the community.



BETTER DATA, BETTER DECISIONS

Data clarity produced by the scanners brings the smallest structural issue to light to expedite repairs and monitor for ongoing O&M strategies. The right answers are at your fingertips for CMOM programming and budgeting, risk management, and long-range capital planning.



**WATCH RJN Group's
SCANNERS IN-ACTION**



LEARN MORE?

(800) 227-7838
www.rjn.com



rjngroup

CORPORATE
200 West Front Street
Wheaton, Illinois 60187
(630) 682-4700

LOCATIONS

Baltimore, Maryland
Boston, Massachusetts
Cincinnati, Ohio
Dallas, Texas
Denver, Colorado
Des Moines, Iowa
Fayetteville, Arkansas
Fort Worth, Texas

Houston, Texas
Joliet, Illinois
Little Rock, Arkansas
Omaha, Nebraska
San Antonio, Texas
St. Louis, Missouri
Tulsa, Oklahoma
Vienna, Virginia