



OWN THE STAY

Advanced Connectivity Made For Vacation Rentals

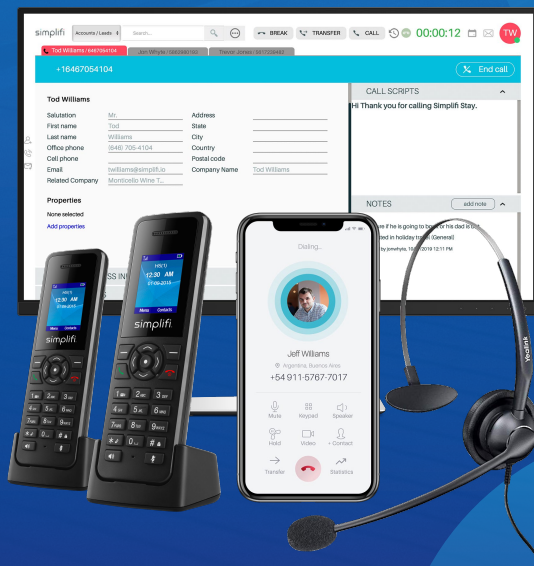
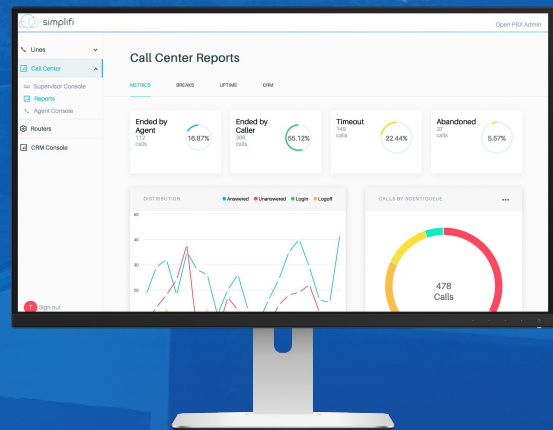


Connect For VRMs

Turn all property visitors into Pro-Active Leads with our captive portal, while building brand awareness and loyalty. Save time and money spent dealing with in-property internet issues with our always up LTE router.

SimplifiCloud Dashboard

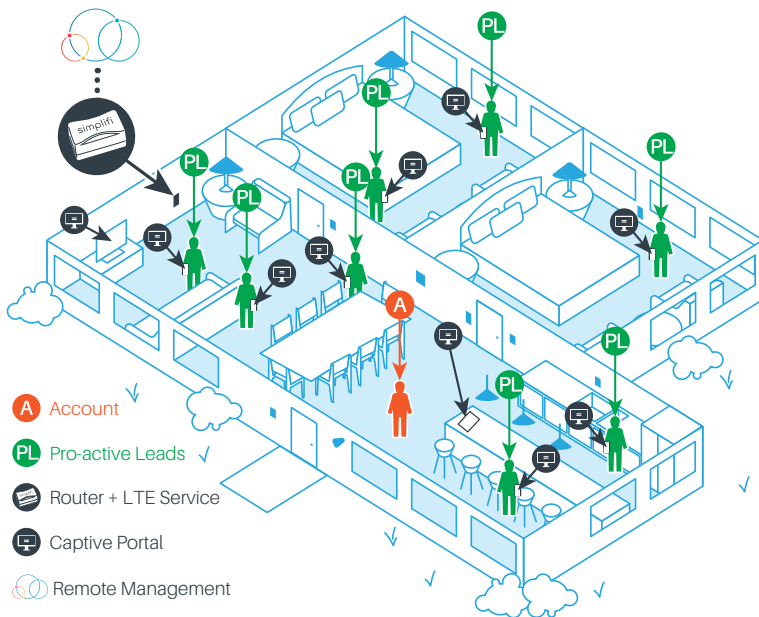
SimplifiCloud dashboard brings data from Simplifi products and third party integrations together in one single pane of glass so you can easily manage your in-property network, your leads and customer communication.



VRM Contact Center

SimplifiStay's Contact Center solution turns booking agents and their supervisors into superstars with our multipurpose Cloud platform that includes PBX, CRM, PMS integrations and full suite of features designed to improve communication, customer management and lead conversion.

Find out more at www.simplifistay.com • Email us at hello@simplifistay.com • Call us at 239.300.2165

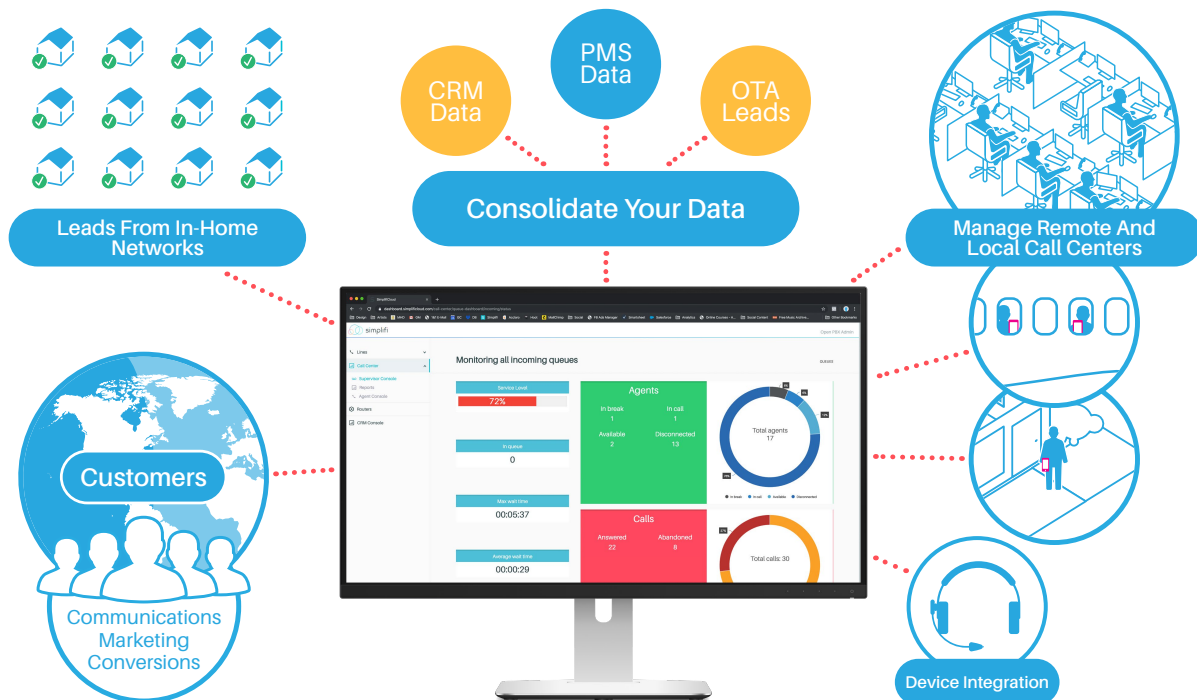


Key On-Site Advantages

- Turn all property visitors into pro-active leads
- Increase direct bookings
- Build brand awareness and loyalty
- Custom Captive Portal directs all visitors to a specific splash page of your choosing (advertising/event promotion)
- Improve customer experience and reduce truck roll with LTE back up for internet
- Remotely manage your home internet in every rental

Key Back-Office Advantages

8+ products in one pane of glass • Improve efficiency and reduce costs • PMS integration that dynamically updates historical and current data • Supervisor and agent consoles for training, management and conversion rates • CRM for lead tracking, marketing and on-brand communication



On-Boarding Workflow

Week 1
Discovery

Week 2

Design

Week 3

Deployment