



# Failover Configuration Guide

.....  
BS6425L

## Identifying Your Network For Failover Protection

Setting up your network with Simplifi's powerful built-in failover protection capabilities starts with properly identifying your current network structure and business needs. Answer the questions below to identify the proper configuration for your unique business needs.

### What type of modem does your network use?

Determine what type of device is at the start of your network. Your ISP has provided you with either a standard modem or a modem with built-in WiFi capabilities.

### Does your network utilize a secondary WiFi router?

If your network uses a secondary WiFi router for your wireless network you will use either Configuration C or Configuration D.

### Does your network utilize a LAN/Ethernet switch?

Do you have multiple devices connected to your network through standard LAN/Ethernet switch? Devices that are not connected through a wireless network?

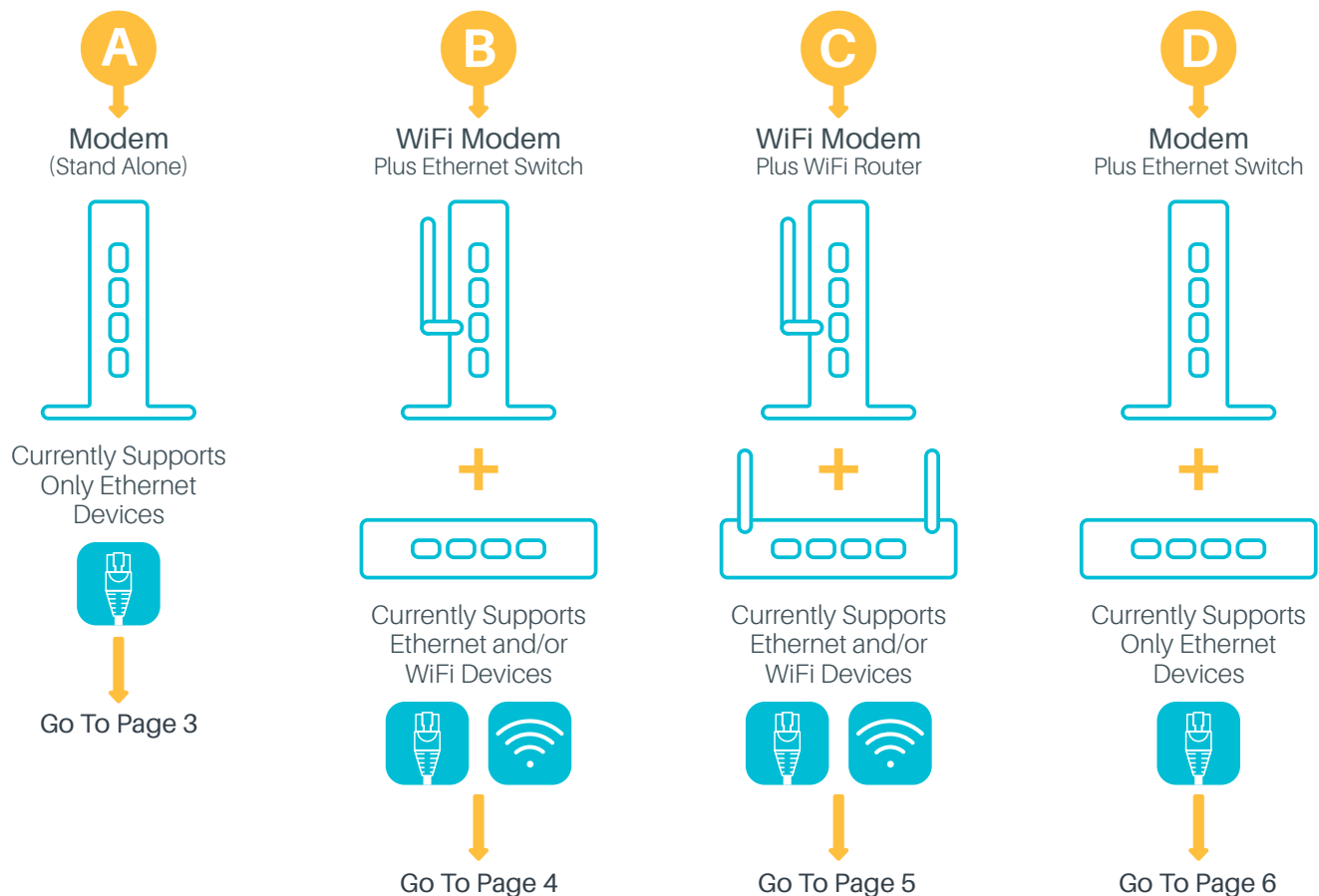
#### ADVANCED NETWORK CONFIGURATION

Advanced network configurations could include installing Simplifi on a Firewall in a network, PBX or VOIP failover situation. If your network is setup with advanced functionality, than special assistance may be necessary.

Please contact your IT or network administrator for help in setting up Simplifi on your business network.

Note, to use the Network Insurance feature of your Simplifi you will need to have an existing cable internet service provider to act as a primary internet connection.

## Identify Your Existing Network!



# Failover Configuration A

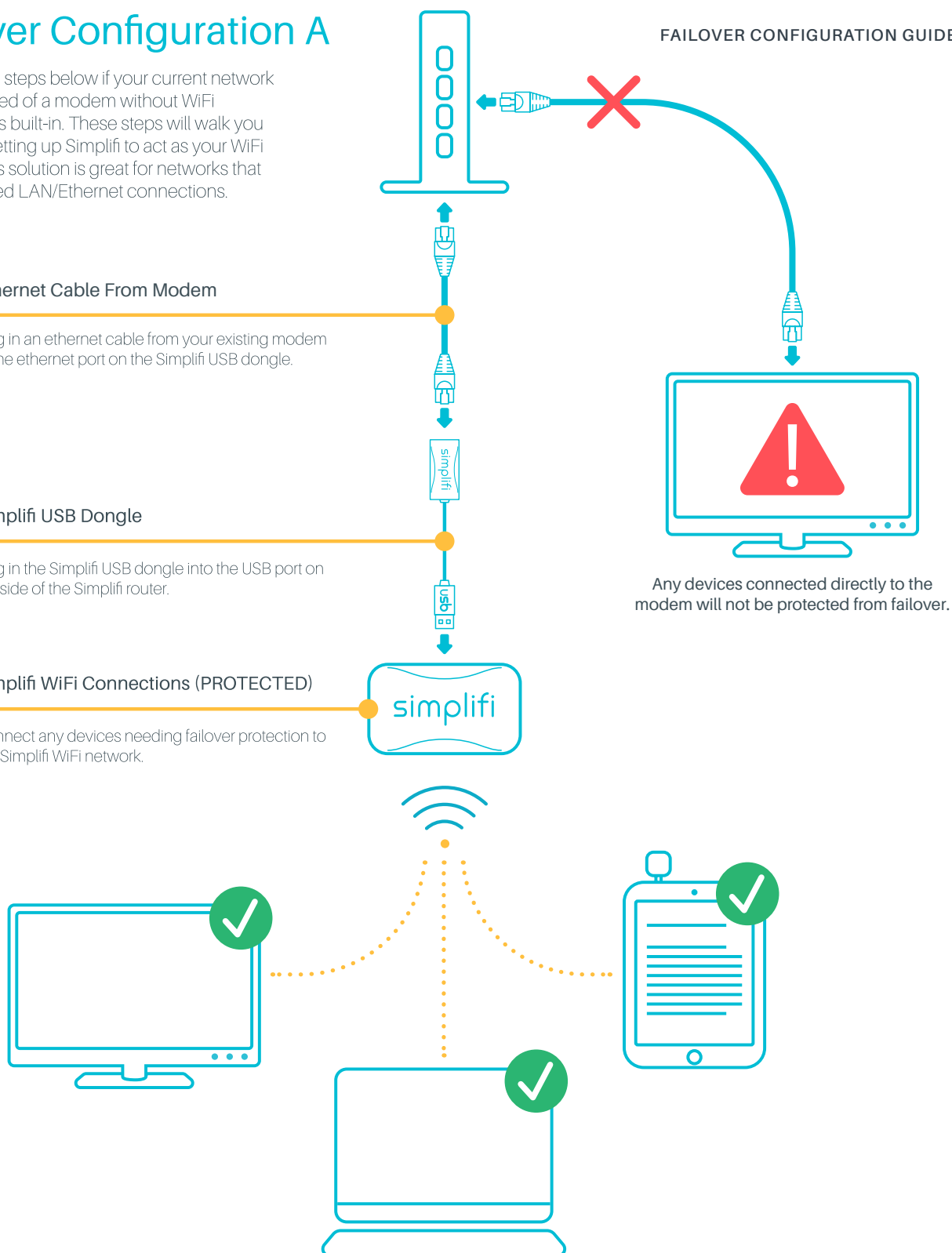
Follow the steps below if your current network is comprised of a modem without WiFi capabilities built-in. These steps will walk you through setting up Simplifi to act as your WiFi router. This solution is great for networks that do not need LAN/Ethernet connections.

## FAILOVER CONFIGURATION GUIDE

- 1 Ethernet Cable From Modem**  
Plug in an ethernet cable from your existing modem to the ethernet port on the Simplifi USB dongle.

- 2 Simplifi USB Dongle**  
Plug in the Simplifi USB dongle into the USB port on the side of the Simplifi router.

- 3 Simplifi WiFi Connections (PROTECTED)**  
Connect any devices needing failover protection to the Simplifi WiFi network.



# Failover Configuration B

Follow the steps below if your current network is comprised of a WiFi enabled modem and utilizes a switch downstream. This solution is great for networks that need LAN/Ethernet connections.

## FAILOVER CONFIGURATION GUIDE

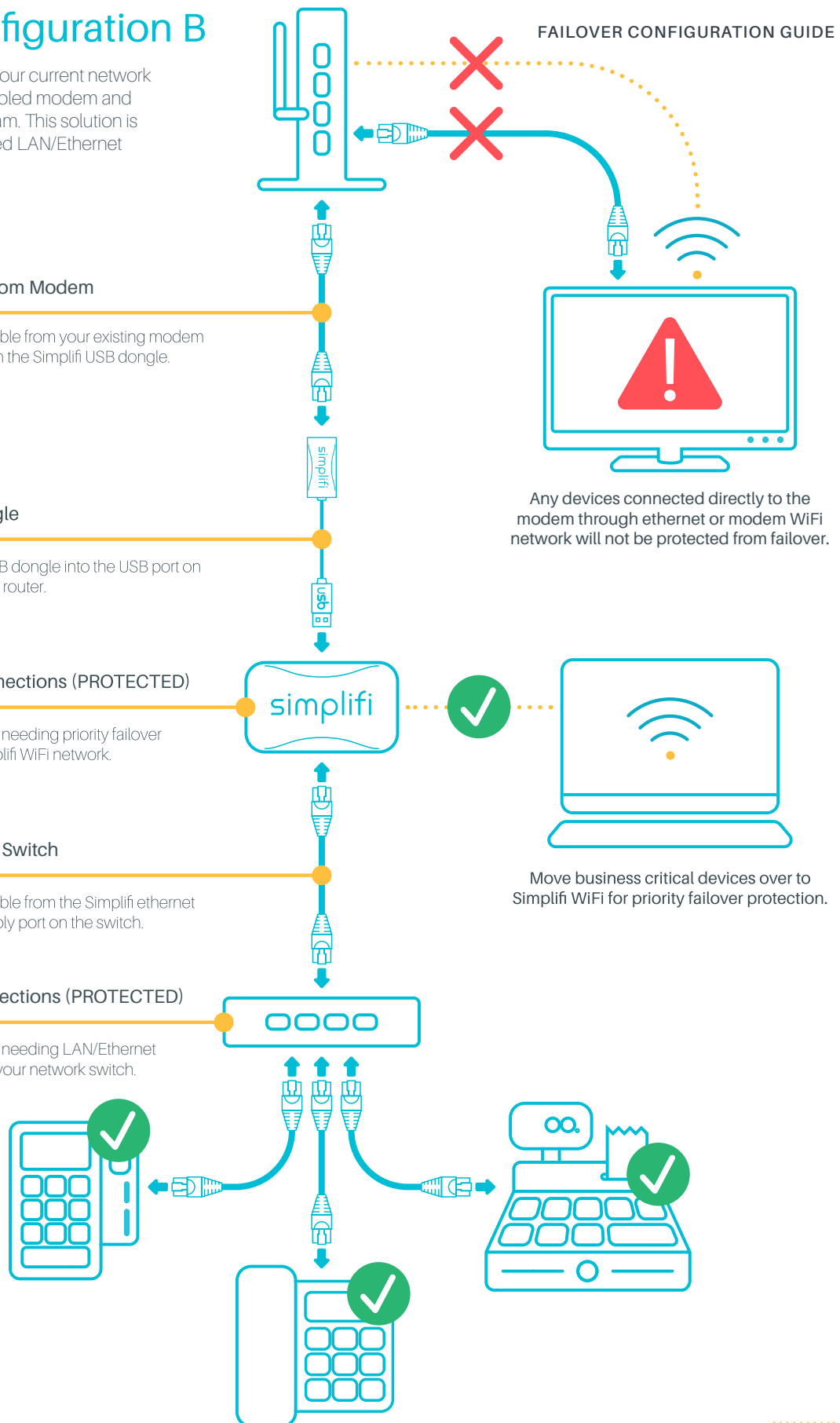
- 1 Ethernet Cable From Modem**  
Plug in an ethernet cable from your existing modem to the ethernet port on the Simplifi USB dongle.

- 2 Simplifi USB Dongle**  
Plug in the Simplifi USB dongle into the USB port on the side of the Simplifi router.

- 3 Simplifi WiFi Connections (PROTECTED)**  
Connect any devices needing priority failover protection to the Simplifi WiFi network.

- 4 Ethernet Cable to Switch**  
Plug in an ethernet cable from the Simplifi ethernet port the ethernet supply port on the switch.

- 5 Switch LAN Connections (PROTECTED)**  
Connect any devices needing LAN/Ethernet failover protection to your network switch.



# Failover Configuration C

Follow the steps below if your current network is comprised of a WiFi enabled modem but utilizes a secondary WiFi router as a primary network connection. This solution is great for networks that need LAN/Ethernet connections and a WiFi network.

## FAILOVER CONFIGURATION GUIDE

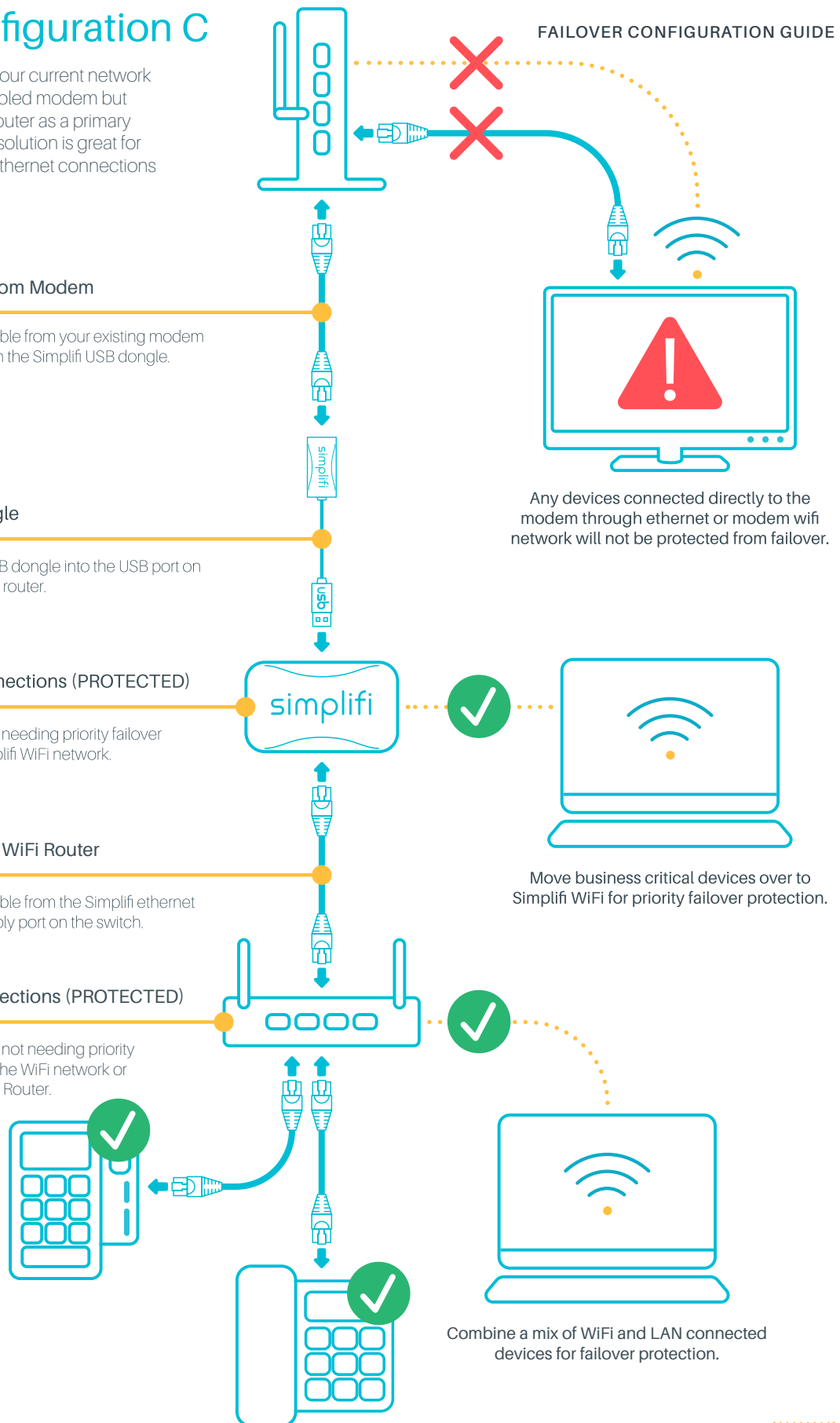
- 1 Ethernet Cable From Modem**  
Plug in an ethernet cable from your existing modem to the ethernet port on the Simplifi USB dongle.

- 2 Simplifi USB Dongle**  
Plug in the Simplifi USB dongle into the USB port on the side of the Simplifi router.

- 3 Simplifi WiFi Connections (PROTECTED)**  
Connect any devices needing priority failover protection to the Simplifi WiFi network.

- 4 Ethernet Cable to WiFi Router**  
Plug in an ethernet cable from the Simplifi ethernet port to the ethernet supply port on the switch.

- 5 WiFi Router Connections (PROTECTED)**  
Connect any devices not needing priority failover protection to the WiFi network or LAN ports on the WiFi Router.



# Failover Configuration D

Follow the steps below if your current network is comprised of a modem without WiFi capabilities built-in, but utilizes a WiFi router as a primary network connection. This solution is great for networks that need LAN/Ethernet connections and a WiFi network.

## FAILOVER CONFIGURATION GUIDE

### 1 Ethernet Cable From Modem

Plug in an ethernet cable from your existing modem to the ethernet port on the Simplifi USB dongle.

### 2 Simplifi USB Dongle

Plug in the Simplifi USB dongle into the USB port on the side of the Simplifi router.

### 3 Simplifi WiFi Connections (PROTECTED)

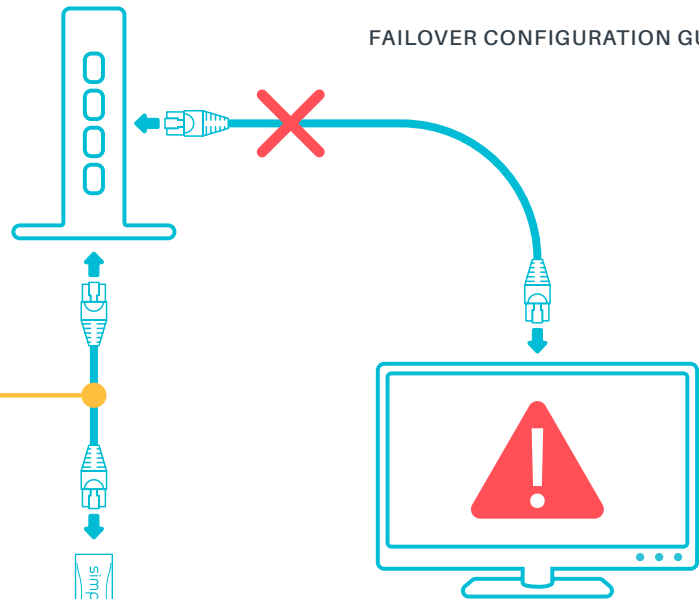
Connect any devices needing priority failover protection to the Simplifi WiFi network.

### 4 Ethernet Cable to WiFi Router

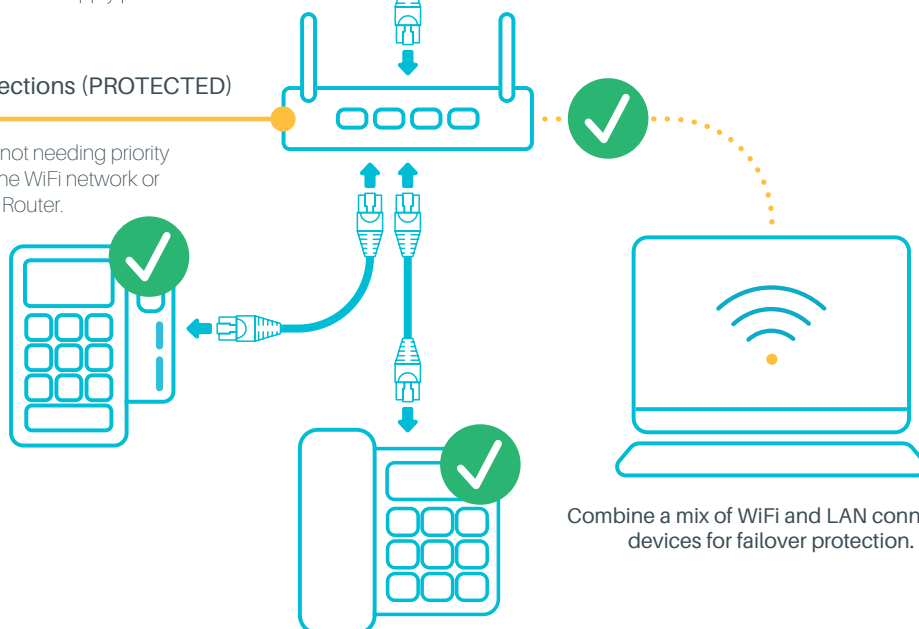
Plug in an ethernet cable from the Simplifi ethernet port to the ethernet supply port on the WiFi router.

### 5 WiFi Router Connections (PROTECTED)

Connect any devices not needing priority failover protection to the WiFi network or LAN ports on the WiFi Router.



Move business critical devices over to Simplifi WiFi for priority failover protection.



Combine a mix of WiFi and LAN connected devices for failover protection.