

INTRODUCING STARDOG

Why Knowledge Graphs are Key to a Data Fabric



STARDOG



What will you learn today?

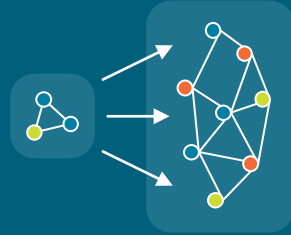
- 1 Why is an Enterprise Knowledge Graph key to a data fabric?
- 2 How does an Enterprise Knowledge Graph work?
- 3 What are the most important capabilities of an Enterprise Knowledge Graph platform?
- 4 How have customers been successful implementing a data fabric?

Why is an Enterprise Knowledge Graph key to a Data Fabric?

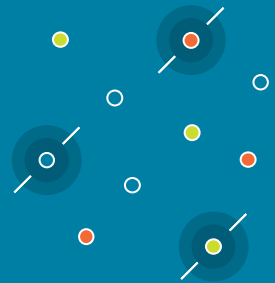
Knowledge Graph as the Foundation



Knowledge graphs can **unify data and metadata** using semantics and inferencing

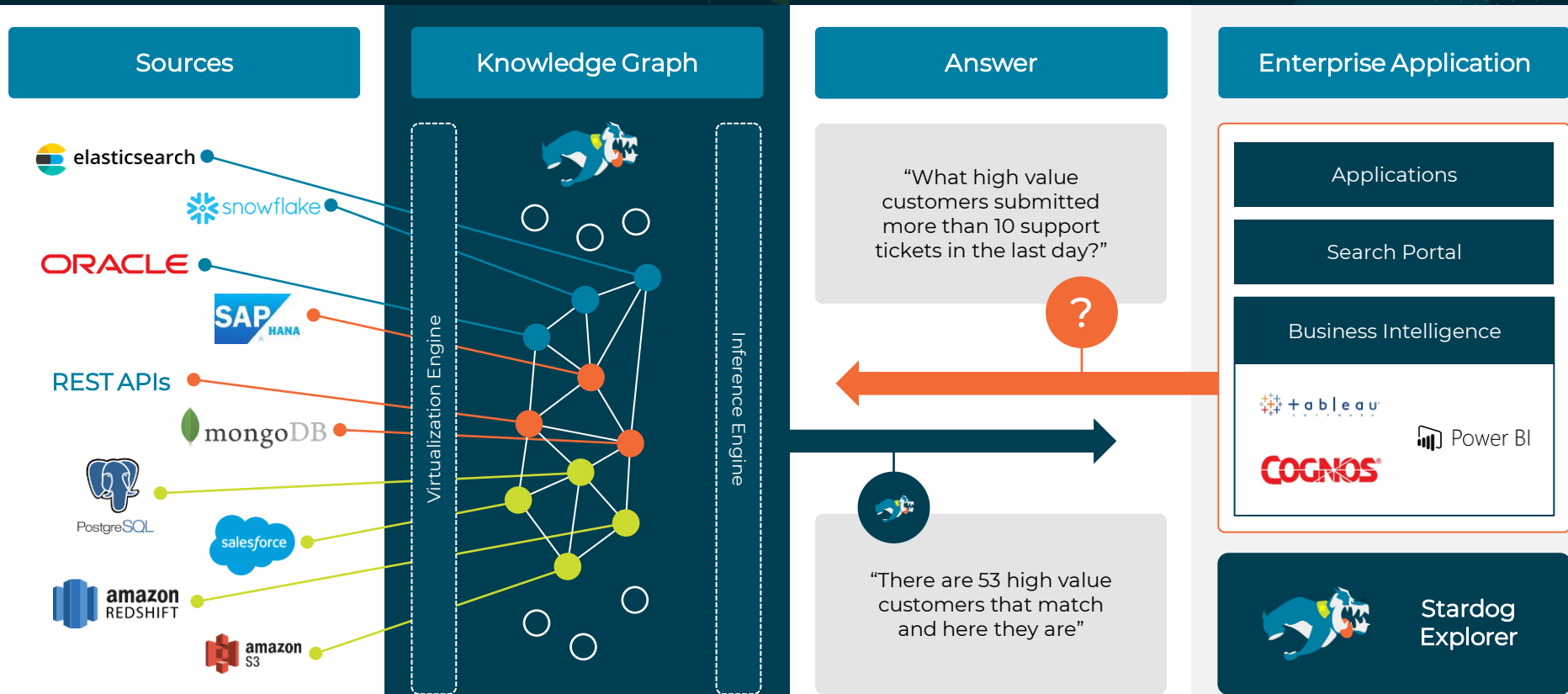


Knowledge graphs can **evolve as your Data Fabric evolves**



Knowledge graphs can **query data where it is**, without requiring a major project to centralize data

How does an Enterprise Knowledge Graph work?



What are the most important capabilities of an Enterprise Knowledge Graph platform?

Virtualization

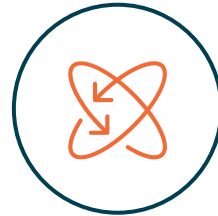
STOP copying data every time you have a new business challenge to solve.



Reduce the time, resources, and costs of duplicating and moving data.

Semantic Graph

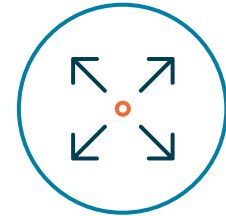
The most flexible enterprise abstraction layer for data to solve today's toughest business challenges.



Define the data model in relation to the meaning, not the structure, of the data.

Inferencing

Generate more connections to further enhance the network effect of your data.



Enable the graph to generate additional value via creating unknown connections.

Leading Applications of a Data Fabric

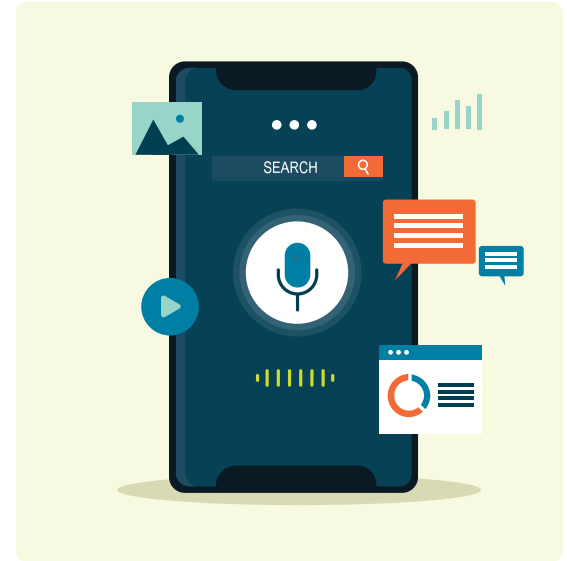
Data Lakes Productivity



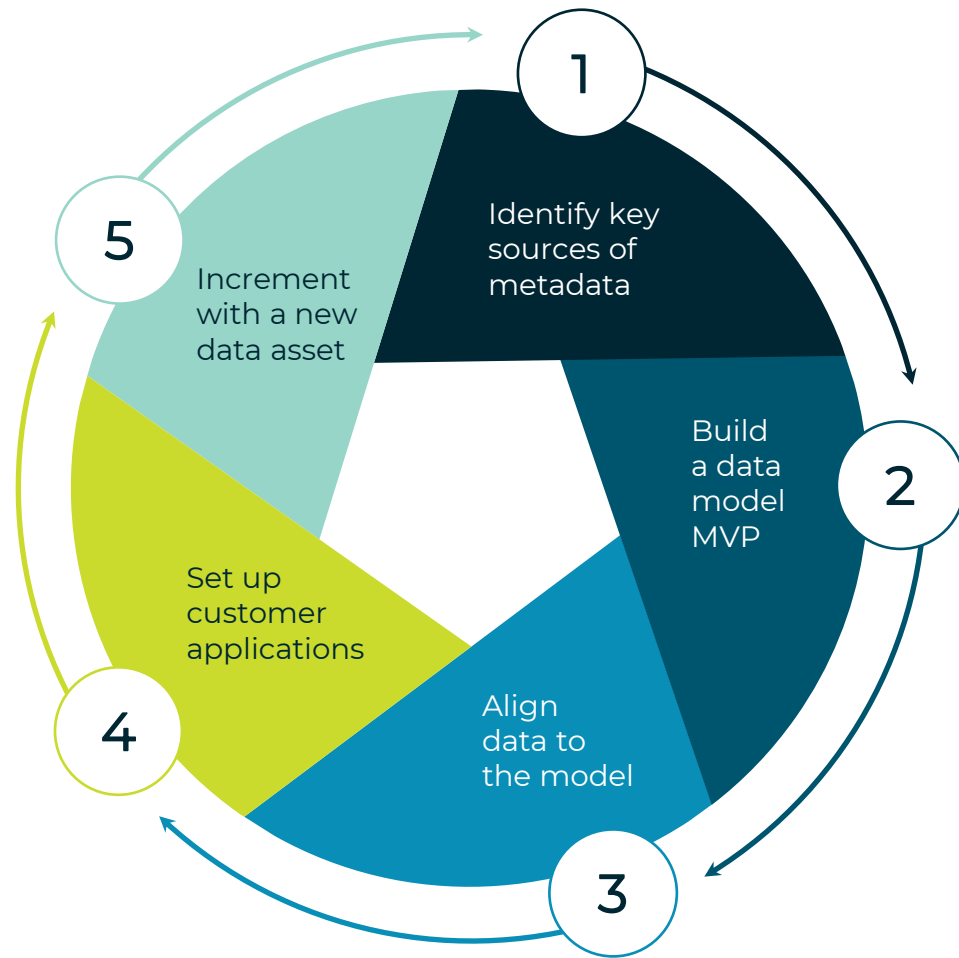
Analytics Acceleration



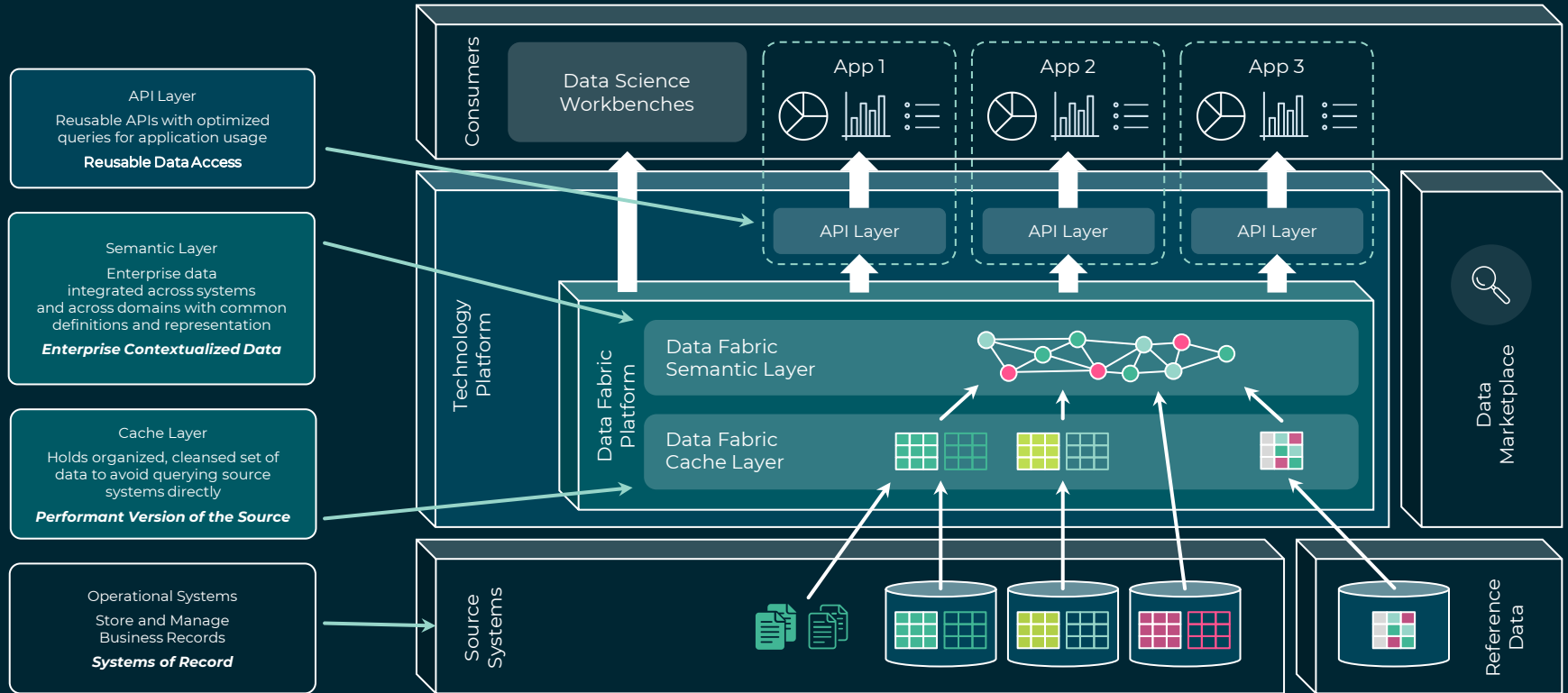
Semantic Search



A Data Fabric Implementation Framework



A Large Pharmaceutical Manufacturing Company's Data Fabric Architecture





WEBINAR:
LIVE Q&A



Thank you!

ADDITIONAL INFORMATION:

View E-book: info.stardog.com/data-fabric-whitepaper

Try Stardog Free: www.stardog.com/get-started