

west

port

west

port

west port

Renderings are artist's concept only. E & O.E.

A Development by Edenshaw

Edenshaw is a boutique real estate development company dedicated to complementing and enhancing neighbourhoods with mindfully designed residences and thoughtfully planned, life-enriching amenities.

Edenshaw builds beyond expectation by crafting communities that incorporate innovative materials and technologies with sustainable building practices and construction expertise, creating homes that are both progressively developed and highly desirable.



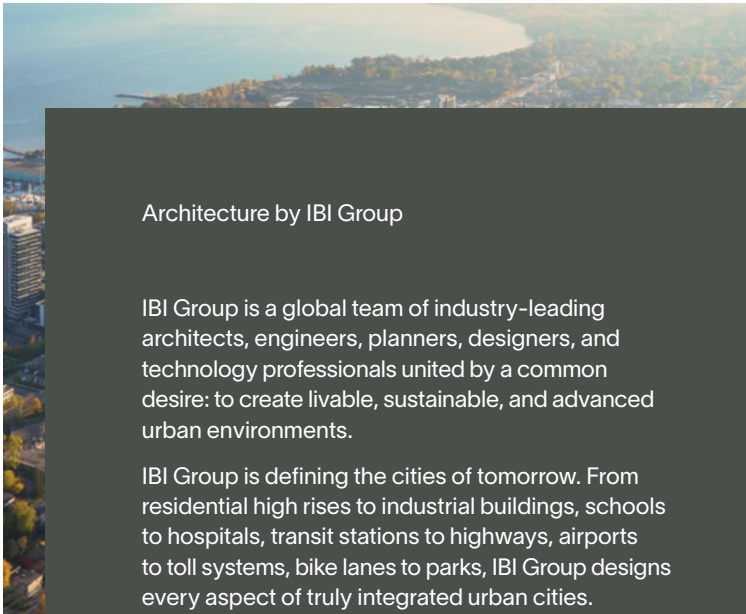


Renderings are artist's concept only. E. & O. E.

Westport is located in the heart of Port Credit – adjacent to the Port Credit GO Mobility Hub and future Hurontario LRT, and only a short walk to Lake Ontario.

The Residence

Welcome
to Westport.



Architecture by IBI Group

IBI Group is a global team of industry-leading architects, engineers, planners, designers, and technology professionals united by a common desire: to create livable, sustainable, and advanced urban environments.

IBI Group is defining the cities of tomorrow. From residential high rises to industrial buildings, schools to hospitals, transit stations to highways, airports to toll systems, bike lanes to parks, IBI Group designs every aspect of truly integrated urban cities.

Westp
to the
LRT, a

The Residence

Westport combines
modern living with
the village charm
of Port Credit.



Mississauga Canoe Club
15-MINUTE WALK

Your next move

Designed by the award-winning IBI Group, Westport is a contemporary address in a coveted location, with the best of Port Credit at its door. This is a place every resident will be proud to call home.

With its distinctive facade, Westport skillfully juxtaposes traditional and modern elements, seamlessly combining the playful brick patterning of the podium with the sophistication of a 22-storey steel and glass tower rising above, creating a residence that speaks to the legacy of its neighbourhood while looking towards the future of Port Credit.



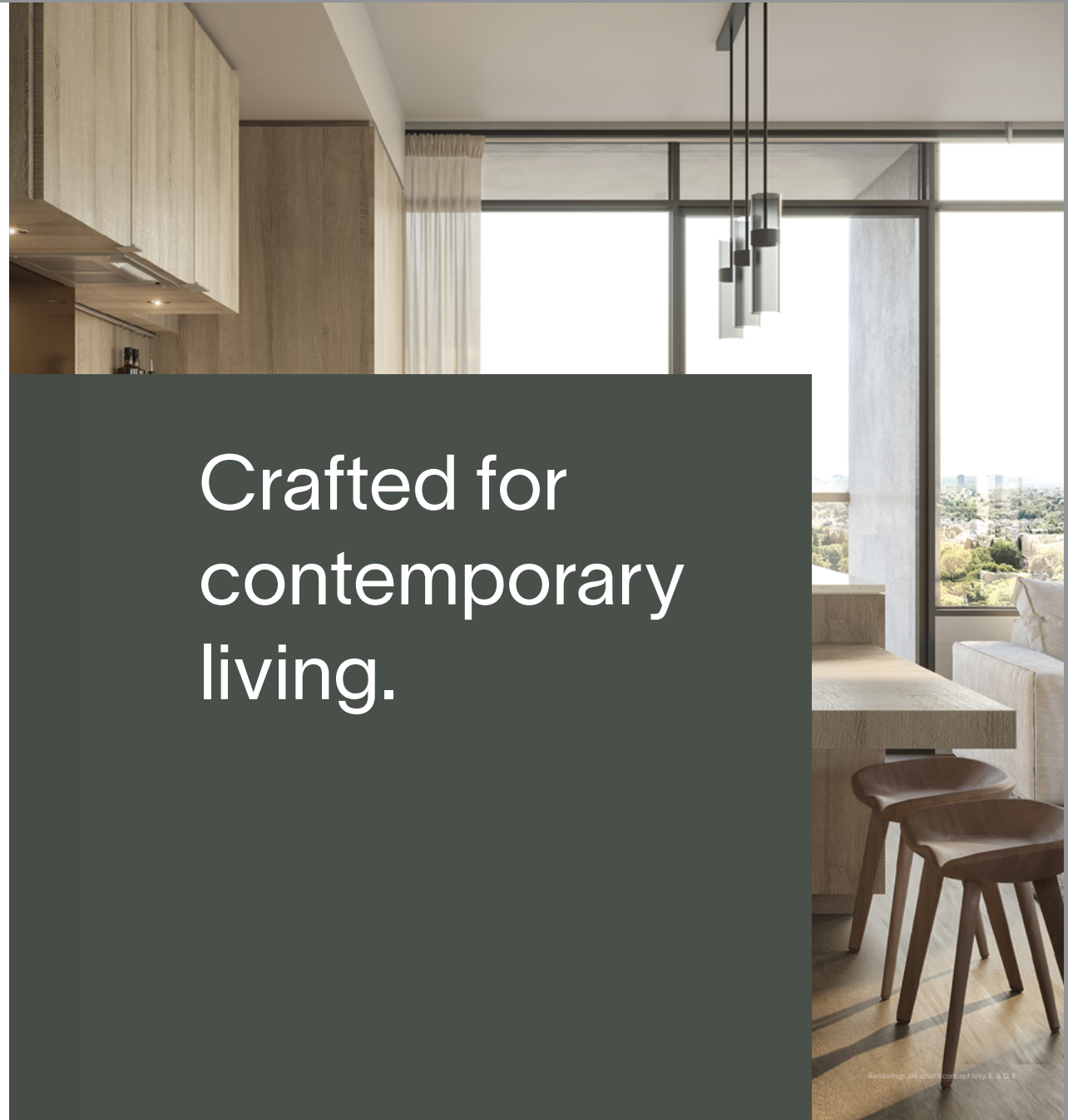
Renderings are artist's concept only. E. & O. E.



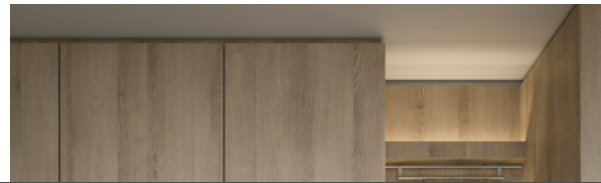
Renderings are artist's concept only. E. & O. E.

Custom designed by Cecconi Simone, the exceptionally crafted European-style kitchens are available in a variety of sophisticated finishes.

Crafted for
contemporary
living.



Renderings are artist's concept only. E. & O. E.



Interior Design by Cecconi Simone

Cecconi Simone Inc. is a multi-disciplinary interior design practice based in Toronto, Canada, privately owned and operated by Elaine Cecconi and Anna Simone. Established in 1982, Cecconi Simone has met with continued success, creating award-winning interiors for the retail, corporate, hospitality, and residential sectors in Canada, the United States, Anguilla, Italy, the United Arab Emirates, Qatar, India, and China.



Renderings are a start concept only. E & O. E.



Renderings are artist's concept only. E. & O. E.

As the epicentre of the home, Westport kitchens are thoughtfully and meticulously designed with a range of inspiring and innovative features you'll appreciate every day.

Beyond the clean, contemporary styling, the kitchens are cleverly crafted for efficiency and functionality – the seamlessly integrated backsplash shelving, with LED uplighting and unique smoked-glass accent, not only makes a distinctive design statement, but also provides a practical means of expanding kitchen storage, while allowing quick access to items you use most.

Additionally, the premium, fully-integrated induction cooktop, means you can enjoy cool-touch cooking for safer, faster, and more energy-efficient meal preparation. And because the cooktop is heat-free, it can also serve as adjunct counter space while you're cooking.

Westport kitchens also feature a fully-integrated European-style oven, under-counter microwave, and panelized dishwasher and refrigerator, creating a beautifully resolved and cohesive design for enduring appeal.

As an optional upgrade, Cecconi Simone has custom designed a kitchen island with several space-saving features: large, soft-close drawers, a dish-towel bar, and an expandable-retractable dining leaf to either increase counter space or make room for additional dining guests.

The Kitchens

Modern aesthetics and intelligent functionality make meal preparation an inspired experience.

The Suites

Filled with light and opening to spectacular views, the residences of Westport are set to be truly brilliant.

The interior design by Cecconi Simone brings together natural tones and subtle finishes to create a timeless appealing home – a place you'll enjoy for years to come.

The captivating scenes from the floor-to-ceiling windows capture views from sunrise to sunset, stretching out towards Lake Ontario, Credit River, the verdant treetops of Mineola, and the burgeoning skyline of Mississauga City Centre.

Each home is designed to be airy and bright, with 10 foot ceilings in the Upper Westport Collection, and spectacular outdoor spaces offered in the Terrace Collection to create your own private outdoor sanctuary for dining, entertaining, or relaxing.



Renderings are artist's concept only. E. & O. E.





Lobby Lounge

Renderings are artist's concept only. E. & O. E.

With its inviting double-sided fireplace, soaring ceilings, and abundant natural light, the lobby sets the scene for a warm and welcoming arrival experience.

This is your sophisticated and beautifully designed space for meeting friends, catching up on work, or just relaxing in style.

The Amenities

Active. Social. Life.



Lobby Lounge

With its inviting double-sided light and abundant natural light, the space is perfect for a warm and welcoming atmosphere.

This is your sophisticated and modern space for meeting friends, colleagues, or just relaxing in style.

The Amenities

Westport is all about community and connectivity, which is why it's been crafted with over 15,000 square feet of 5-star, indoor and outdoor amenities across two floors. These thoughtfully conceived areas designed by Cecconi Simone extend your living space with features created to suit the lifestyle of each and every resident.

The Amenities

Westport offers life-enriching amenities, with over 15,000 square feet of connected spaces over two floors.



Fitness Centre

Renderings are not to scale. © 2015

A social community

Ground Floor

Lobby Lounge

- Hotel-style lobby with lounge seating and double-sided fireplace
- 24-hour, 7-day-a-week concierge
- Monitored mail room
- Refrigerated parcel storage
- Digital, keyless access

Co-working Hub

- Ample seating for both groups and individuals
- Kitchen with bar-height counter and seating
- Café-style lounge
- Private meeting areas

Fitness Centre

- State-of-the-art fitness centre
- Free weights and cabled weight machines
- Cardio equipment including treadmills, ellipticals, and bikes
- Connected social lounge with water fill station
- Yoga studio with virtual fitness access
- Outdoor yoga deck
- Change rooms

Dog Run and Pet Spa

- Enclosed, outdoor dog run
- Interior, heated waiting area with seating
- Pet spa located conveniently adjacent to dog run

15th Floor

East and West Lounges

- Two expansive lounges connected by a double-sided fireplace
- Fully-equipped catering kitchen
- Spacious dining room with adjacent private cocktail lounge

Rooftop Terrace

- Designer-landscaped rooftop terrace
- Barbecue stations, with adjacent dining areas
- Lounge area with cabanas
- Firepit
- Views of Lake Ontario and the Toronto skyline

Sports and Entertainment Zone

- Dedicated entertainment lounge
- Wet bar
- Large-screen television for watching sports or movies

Guest Suites

- Hotel-appointed guest suites
- Private balconies



Renderings are artist's concept only. E. & O. E.

Westport's ground floor amenities cater to the active lives of its residents, with a 24-hour, 7-day-a-week concierge, providing peace of mind, and a well-appointed café-style co-working hub, with private boardroom, lounge, and kitchen. Unwind after a day's work in the state-of-the-art fitness centre with yoga studio, where you can enjoy an invigorating work-out or a relaxing yoga session. Children have a dedicated activity space where they can play, read, or do crafts, while four-legged residents are catered to with an enclosed dog run with a connected, heated indoor waiting and viewing area, and adjacent pet spa.

On the 15th floor, it's all about entertaining in style. Here, residents have access to the elegantly designed east and west lounges. This expansive and versatile amenity features two lounge areas connected by a double-sided fireplace;

a fully-equipped catering kitchen, spacious dining room, and private adjacent cocktail lounge – the perfect atmosphere for intimate gatherings or larger social functions.

Stepping out to the connected rooftop terrace, the cabana lounge, barbecue stations, and firepit deliver the ideal setting for sunbathing or socializing – all with the spectacular backdrop of Lake Ontario.

The 15th floor also boasts a sports and entertainment zone for hosting game nights or Oscar parties. Two hotel-appointed guest suites are also located on this floor, for the comfort and convenience of visiting family and friends.



East Lounge

Renderings are artist's concept only. E. & O. E.

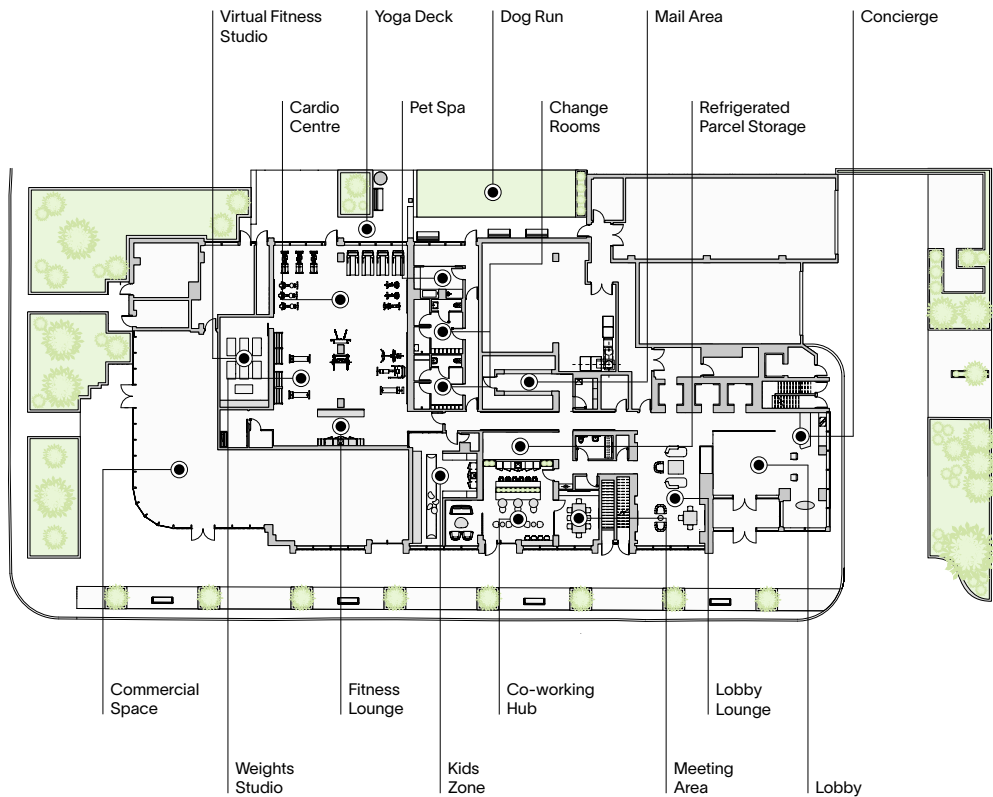


Rooftop Terrace

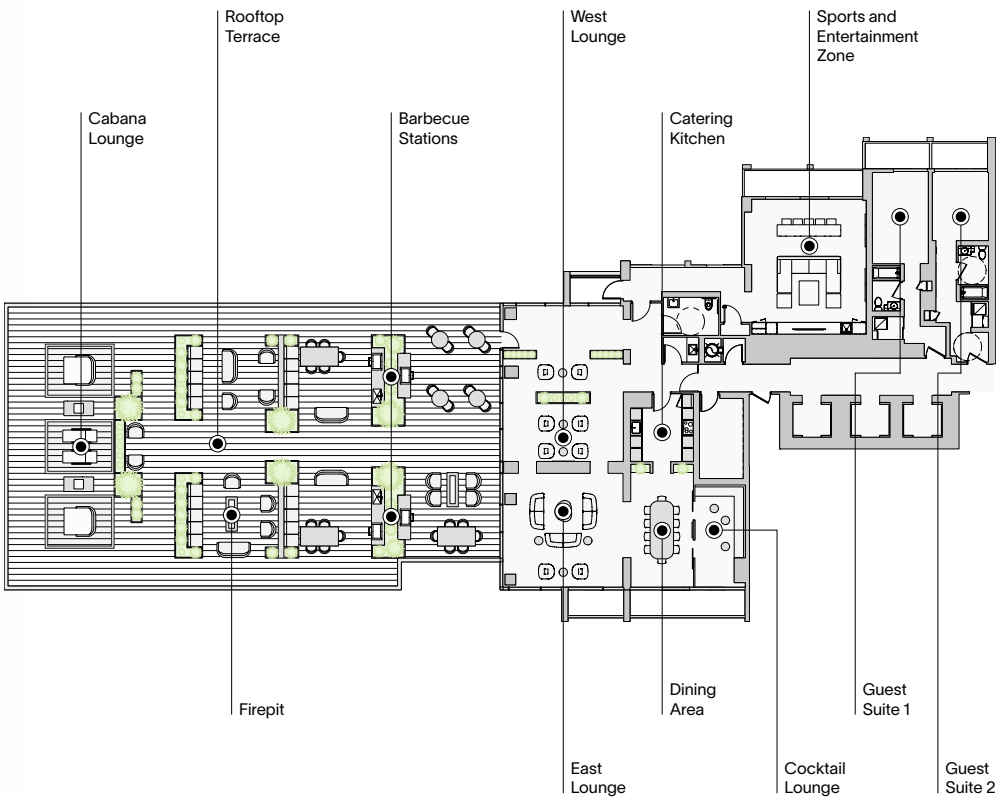
Renderings are artist's concept only. E. & O. E.

Amenities at Westport

Ground Floor



15th Floor





Make the
connection.

Credit River
5-MINUTE WALK



The Connectivity

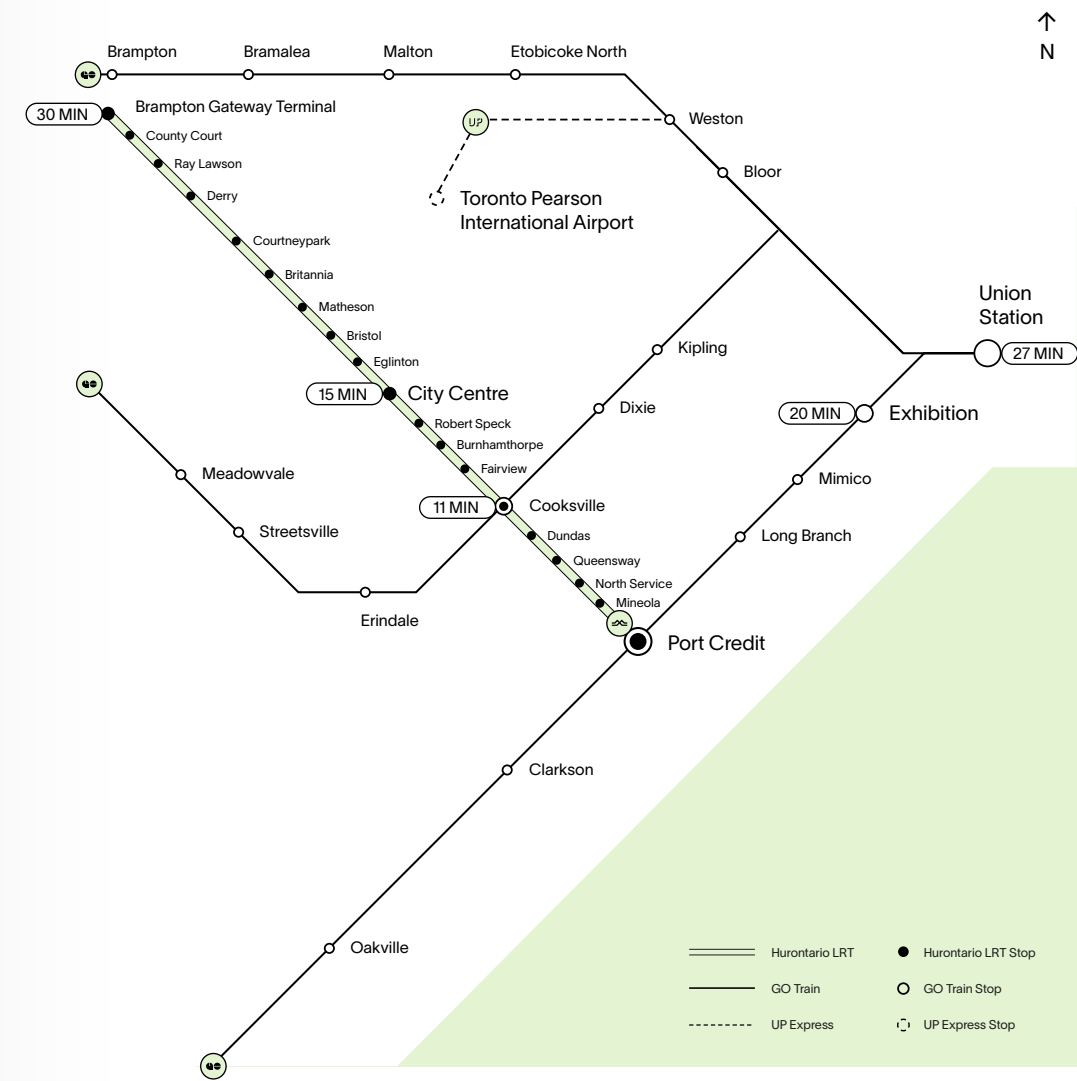
In addition to all the charms of Port Credit at your door, Westport offers the convenience of urban connectivity, with the Port Credit GO Mobility Hub across the street, and the future Hurontario LRT just around the corner, providing quick connections throughout Mississauga to Brampton, and downtown Toronto.

Major highways are also close by, and Toronto Pearson International Airport is only a 14-minute drive away.

Credit River
5-MINUTE WALK

The Connectivity

Living adjacent to the Port Credit GO Mobility Hub and the future Hurontario LRT offers quick connections to downtown Toronto and Mississauga City Centre.





Get your caffeine fix at Back Road Coffee Roasters. This local favourite roasts in-house and serves an inspiring range of custom blends and single origins.

Back Road Coffee Roasters 5-MINUTE WALK

Open spaces, local places.

Eating well in Port Credit is easy, with many superb choices for epicureans such as Cousins Market, MyOlive, and Dry Aged – all just a few minutes' walk from Westport.

Cousins Market 8-MINUTE WALK

MyOlive 5-MINUTE WALK

Dry Aged 13-MINUTE WALK





Port Credit Village

Port Credit is a hidden gem on the water. This is a place for weekenders and wanderers, with local shopping and dining close to home. Westport is just moments from the hundred-plus acres of Lakefront Promenade Park as well as the bustling Port Credit Farmers Market, waterfront, and marina, with major retail centres only minutes away.

Nearby Rattray Marsh is the last remaining lakefront marsh between Toronto and Burlington – an environmentally sensitive wetland with an extensive boardwalk offering peaceful waterfront views in the heart of the city.

As well as wide-open spaces and lakeside walking trails to enjoy all year round, Port Credit is known for its local festivals and special events, such as the Mississauga Waterfront Festival, Paint the Town Red Canada Day Celebration, the Southside Shuffle Blues and Jazz Festival, the Lighting of the Lighthouse, and Buskerfest.



Eating well in Port Credit is easy, with many superb choices for epicureans such as Cousins Market, MyOlive, and Dry Aged – all just a few minutes' walk from Westport.

Cousins Market	8-MINUTE WALK
MyOlive	5-MINUTE WALK
Dry Aged	13-MINUTE WALK



Rattray Marsh Conservation Area
8-MINUTE DRIVE

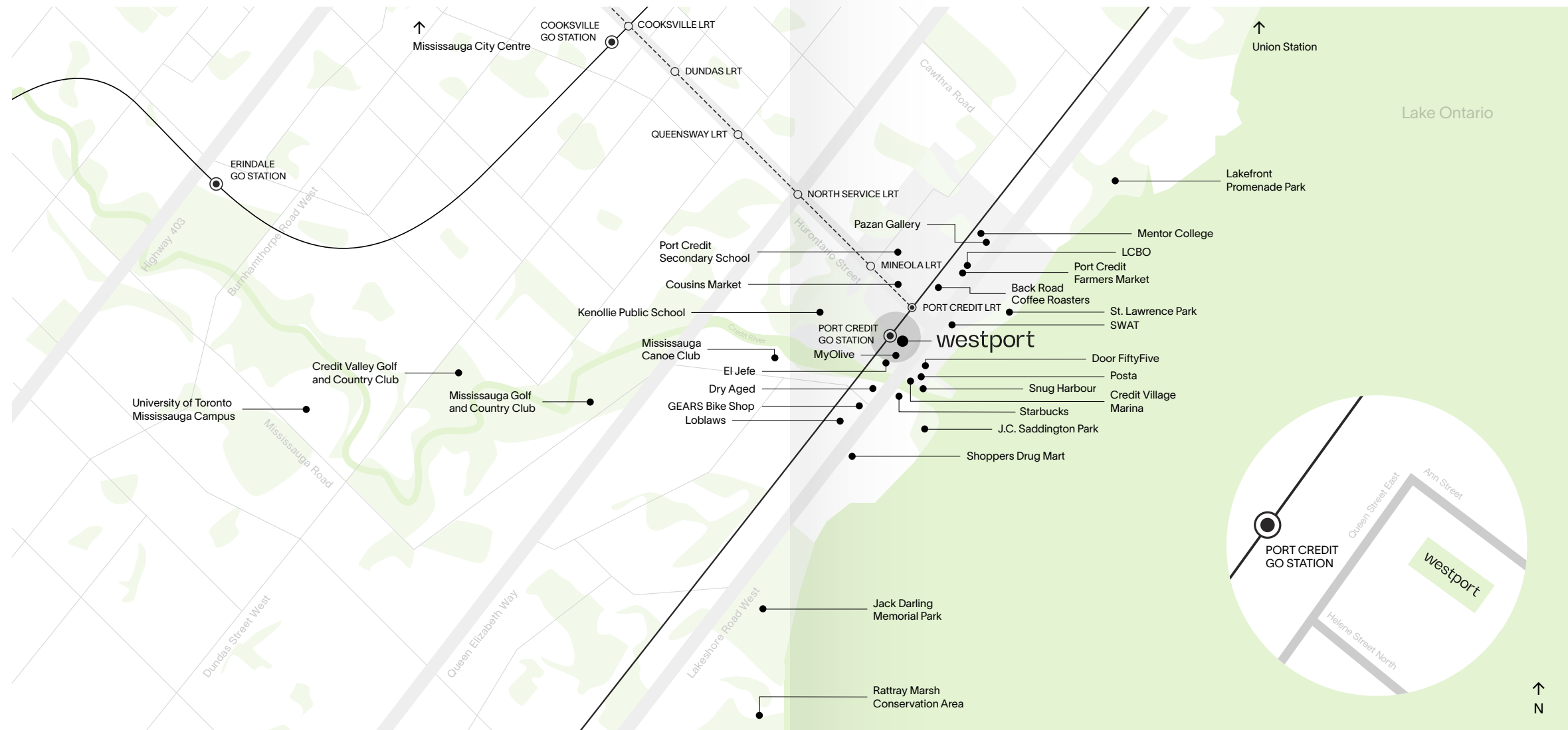
The Neighbourhood

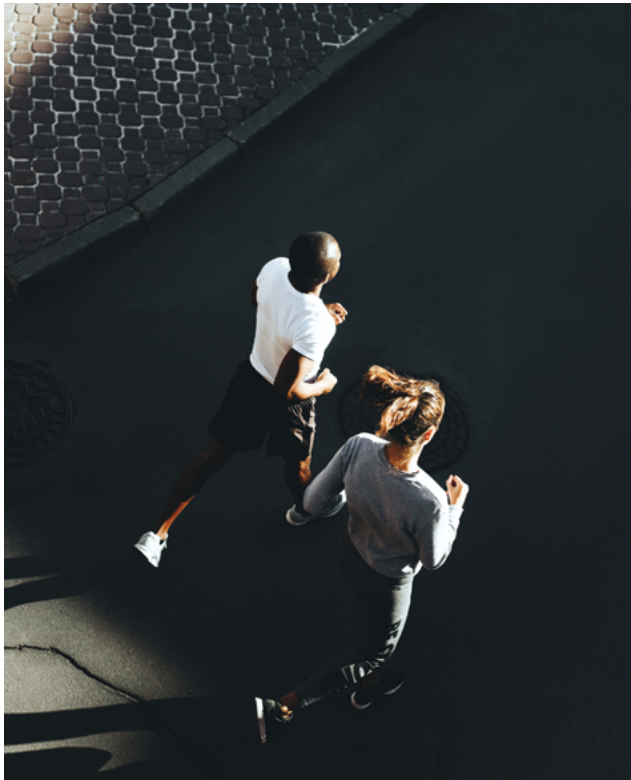
With the convenience of shopping, dining, transit, parks, and modern village life at your door, Westport is one of the area's best-connected addresses.



Keep your kitchen well-stocked with fresh produce direct from growers at the weekly Port Credit Farmers Market.

Port Credit Farmers Market 6-MINUTE WALK





From winding trails for walking, running, and cycling to picnic areas and barbecues, J.C. Saddington Park offers a picturesque escape among the trees.

J.C. Saddington Park 5-MINUTE DRIVE



Stay fit and active at Jack Darling Memorial Park where you'll find tennis courts, a splash pad, playground, and off-leash dog park.

Jack Darling Memorial Park 8-MINUTE DRIVE



Credit Village Marina
7-MINUTE WALK



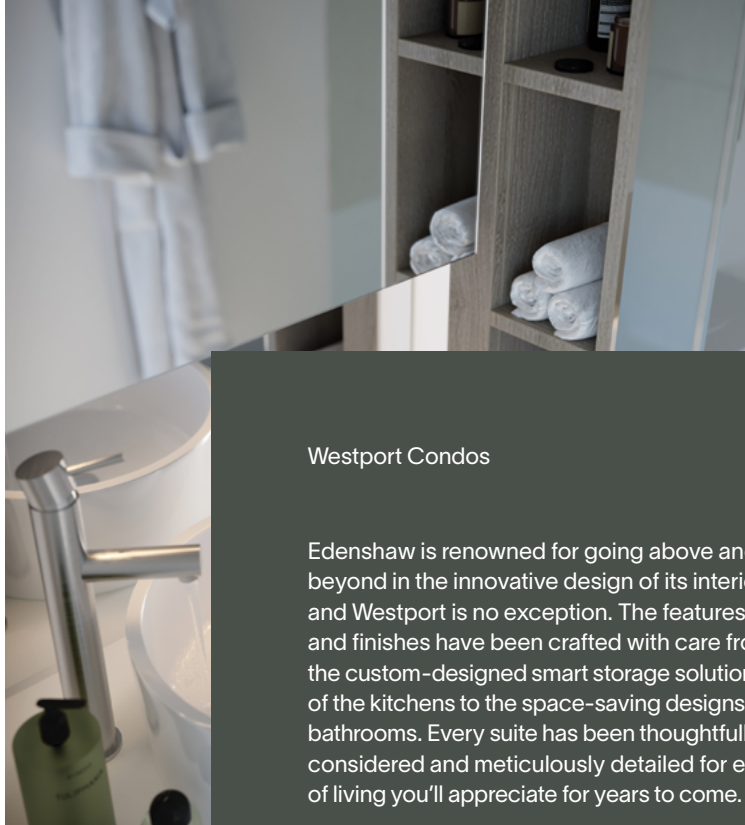
Renderings are artist's concept only. E. & O. E.

The cleverly designed Cecconi Simone bathrooms extend storage without compromising space or style. Bathrooms include an oversized, mirrored medicine cabinet, vanities with soft-close drawers, and integrated, linear, LED-lit tower storage shelving with a floor-to-ceiling mirror.

Intelligent living begins here.



Renderings are artist's concept only. E. & O. E.



The cleverly designed Cecco extend storage without compromising style. Bathrooms include an medicine cabinet, vanities with drawers, and integrated, linear storage shelving with a floor-to-

Westport Condos

Edenshaw is renowned for going above and beyond in the innovative design of its interiors, and Westport is no exception. The features and finishes have been crafted with care from the custom-designed smart storage solutions of the kitchens to the space-saving designs of the bathrooms. Every suite has been thoughtfully considered and meticulously detailed for ease of living you'll appreciate for years to come.



Renderings are artist's concept only. E. & O. E.

Your next move