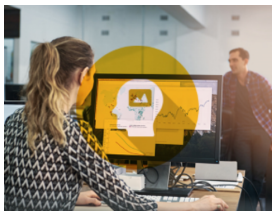


# Maximize insights with Qlik Training

SME Solutions Group

## See How We Can Help

---



BI Professionals



Business Analysts



Business Leaders



System Admins



Developers

Whether in person or virtual, one-on-one or classroom, our Certified Trainers can provide a curriculum for your entire team to enable self-service analytics.

**SPEAK WITH FACTS. ACT ON DATA.**

Visit [www.smesgroup.com](http://www.smesgroup.com) for more info.

Contact us at 813.414.5669 or [info@smesgroup.com](mailto:info@smesgroup.com)





# Creating Visualizations with Qlik Sense

A scenario-based course that addresses the fundamentals required to enable you for self-service visualization and discovery. The course combines demonstrations and hands-on exercises to teach the essential concepts for designing appealing and effective Qlik Sense visualizations and guided stories. Additionally, you will look in depth at the different visualizations and selecting the appropriate one for your data and the type of questions you need to answer.

- You will learn how to:
- Perform advanced analysis
  - Identify data types
  - Design and create visualizations
  - Identify best practices for visualization design
  - Share insights with guided story-telling

# Data Modeling for Qlik Sense

A technical course for you to learn to develop a coherent data model in Qlik Sense by loading and transforming multiple data sources. With information, tools, techniques, and exercises, this course includes topics dealing with: data connections, cleansing and transforming source data, resolving data model issues, optimization for performance, using QlikView Data Files (QVD) files, application development on Qlik Sense server.

- You will learn how to:
- Create a data model
  - Use the data load editor and data manager
  - Create and maintain data connections
  - Resolve data structure issues and script errors
  - Transform data for better performance

# Deploy and Administer Qlik Sense

A technical course that gives you the information, tools, techniques, and skills necessary to deploy, set up, configure, and maintain a Qlik Sense Enterprise platform. Explore security architecture configurations, load balancing, and single sign-on methods. Take advantage of Qlik Sense's enterprise-class governance capabilities for ensuring quality, accuracy, and security of data and analytics.

- You will learn how to:
- Understand deployment plan requirements
  - Explore the QMC
  - Add and manage users
  - Understand data security and section access
  - Monitor and troubleshoot typical system issues

Interested in topics not outlined above, email us about training customized for your business needs.

**SPEAK WITH FACTS. ACT ON DATA.**

Visit [www.smesgroup.com](http://www.smesgroup.com) for more info.  
Contact us at 813.414.5669 or [info@smesgroup.com](mailto:info@smesgroup.com)

