

rework

office furniture. reimaged.

Haworth Unigroup Furniture Finishes

905 South Menard Avenue
Chicago, IL 60644
www.rework-furniture.com
furniture@rework-furniture.com
P 866.920.7759

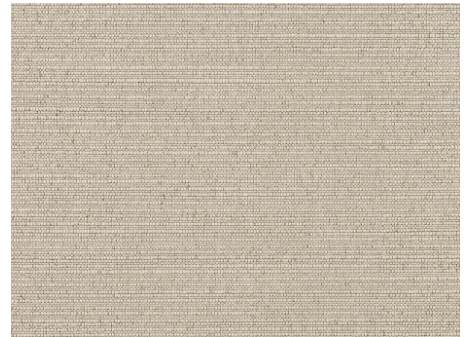
Finishes 2021
Rev 160801



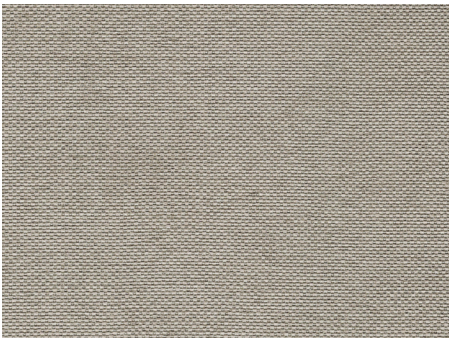
Willow Hazy Grd 1



Sparkle Rust Grd 1



Prada Sandstone Grd 1



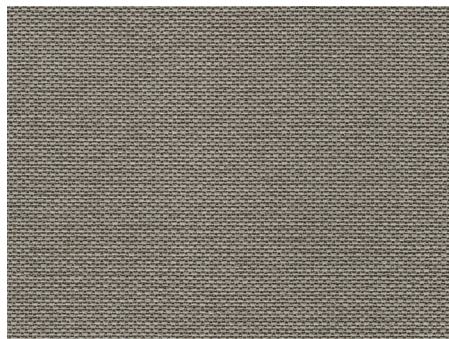
Reflect Champagne Grd 1



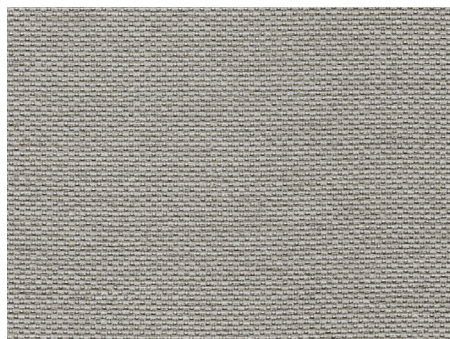
Parada Adobe Grd 2



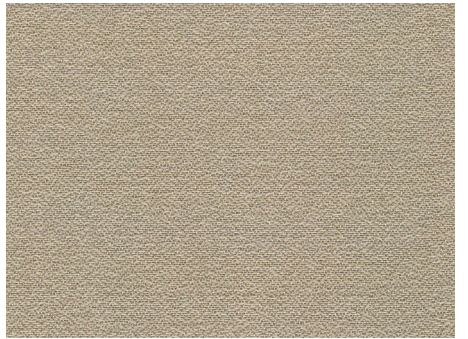
Parada Slate Grd 2



Reflect Sandy Shore Grd 2



Reflect Moondust Grd 2



Simplicity Fawn Grd 2

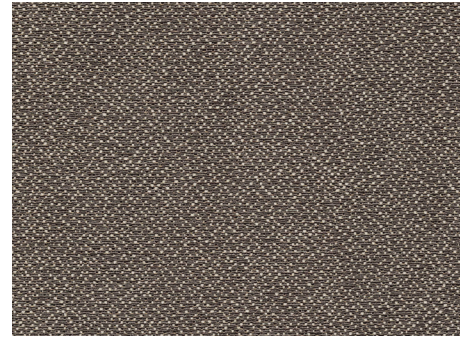
Fabric application as shown
 Non-Directional: Reflect, Simplicity and Glamour
 Directional Rightway: Parada and Sparkle
 Directional Railroad: Willow
 Please refer to page 31 for fabric application diagram.



Willow Dusk Grd 2



Glamour Froth Grd 2



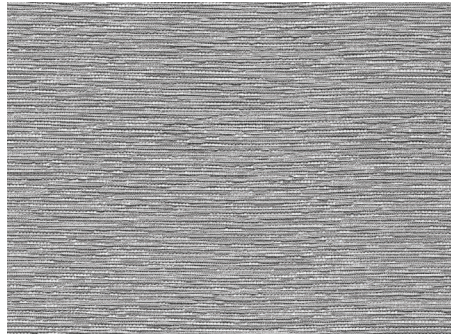
Glamour Buff Grd 2



Simplicity Spun Silver Grd 2



Sparkle Alloy Grd 2



Sparkle Chrome Grd 2

Parada

Content:	100% Polyester
Width:	66" +/-2%
Direction:	Rightway
Abrasion Resistance (ASTM 4966-12 th):	Over 30,000 Rubs Martindale 12kpa
Colorfastness to Crocking (AATCC 8-2007):	Dry: 4.5 Wet: 4.5
Colorfastness to Light (AATCC 16.3-2012):	Hours: 40.0 Class: 3.5
Tensile Strength (ASTM D5034-2009 (2013)):	Warp: 251.7 lbs Fill: 336.2 lbs
Seam Slippage (ASTM D434-1992):	Warp: 36.7 lbs Fill: 75.2 lbs
Flammability	
CAL TB 117-E:	Passes
ASTM E-84:	Class 1

Sparkle

Content:	100% Polyester
Width:	66" +/-2%
Direction:	Rightway
Abrasion Resistance (ASTM 4966-98):	Over 30,000 Rubs Martindale 12kpa
Colorfastness to Crocking (AATCC 8-2007):	Dry: 4.5 Wet: 4.5
Colorfastness to Light (AATCC 16-2004):	Hours: 40.0 Class: 4.0
Tensile Strength (ASTM D5034-2009):	Warp: 254.60 lbs Fill: 281.50 lbs
Seam Slippage (ASTM D434-1995):	Warp: 54.50 lbs Fill: 69.10 lbs
Flammability	
CAL TB 117-E:	Passes
ASTM E-84:	Class 1

Simplicity

Content:	100% Polyester
Width:	66" +/-2%
Direction:	Non-Directional
Abrasion Resistance (ASTM 4966-98):	Over 30,000 Rubs Martindale 12kpa
Colorfastness to Crocking (AATCC 8-2007):	Dry: 4.5 Wet: 4.5
Colorfastness to Light (AATCC 8-2004):	Hours: 40.0 Class: 4.0
Tensile Strength (ASTM D5034-95):	Warp: 191.60 lbs Fill: 138.71 lbs
Seam Slippage (ASTM D434-95):	Warp: 38.50 lbs Fill: 48.41 lbs
Flammability	
CAL TB 117-E:	Passes
ASTM E-84:	Class 1

Reflect

Content:	100% Polyester
Width:	66" +/-2%
Direction:	Non-Directional
Abrasion Resistance (ASTM 4966-12 th):	Over 30,000 Rubs Martindale 12kpa
Colorfastness to Crocking (AATCC 8-2007):	Dry: 4.5 Wet: 4.5
Colorfastness to Light (AATCC 16.3-2012):	Hours: 40.0 Class: 4.0
Tensile Strength (ASTM D5034-2009 (2013)):	Warp: 314.3 lbs Fill: 256.8 lbs
Seam Slippage (ASTM D434-1995):	Warp: 51.50 lbs Fill: 51.80 lbs
Flammability	
CAL TB 117-E:	Passes
ASTM E-84:	Class 1

Glamour

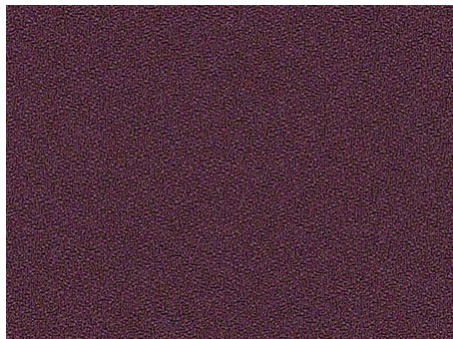
Content:	100% Polyester
Width:	66" +/-2%
Direction:	Non-Directional
Abrasion Resistance (ASTM 4966-98):	Over 30,000 Rubs Martindale 12kpa
Colorfastness to Crocking (AATCC 8-2007):	Dry: 4.5 Wet: 4.5
Colorfastness to Light (AATCC 16-2004):	Hours: 40.0 Class: 4.0
Tensile Strength (ASTM D5034-2009):	Warp: 364.2 lbs Fill: 335.0 lbs
Seam Slippage (ASTM D434-1995):	Warp: 62.30 lbs Fill: 62.70 lbs
Flammability	
CAL TB 117-E:	Passes
ASTM E-84:	Class 1

Willow

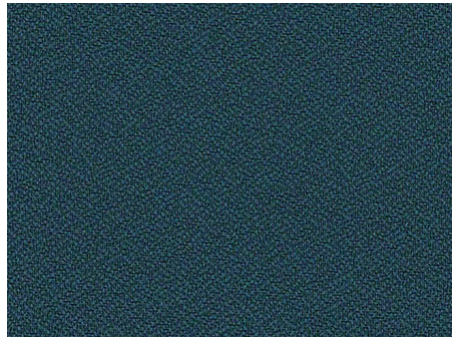
Content:	100% Polyester
Width:	66" +/-2%
Direction:	Railroaded
Abrasion Resistance (ASTM 4966-98):	Over 30,000 Rubs Martindale 12kpa
Colorfastness to Crocking (AATCC 8-2007):	Dry: 4.5 Wet: 4.5
Colorfastness to Light (AATCC 16-2004):	Hours: 40.0 Class: 4.0
Tensile Strength (ASTM D5034-2009):	Warp: 369.80 lbs Fill: 319.40 lbs
Seam Slippage (ASTM D434-1995):	Warp: 13.90 lbs Fill: 62.80 lbs
Flammability	
CAL TB 117-E:	Passes
ASTM E-84:	Class 1

Due to variations in the configuration, setting, and collaboration of technical devices, the digital image color shown here may vary from actual samples.

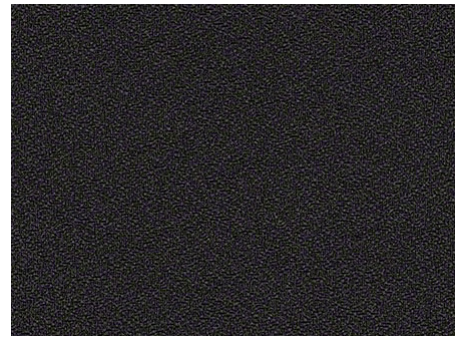
800.763.9100
www.rework-furniture.com
furniture@rework-furniture.com



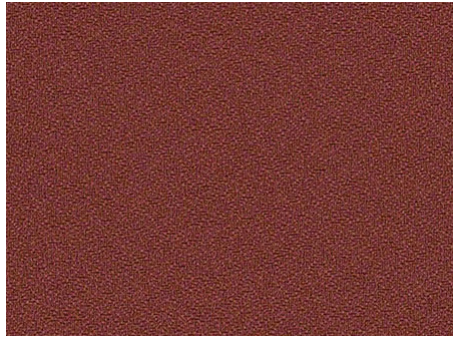
Aubergine NH419



Azure NH359



Black NH333



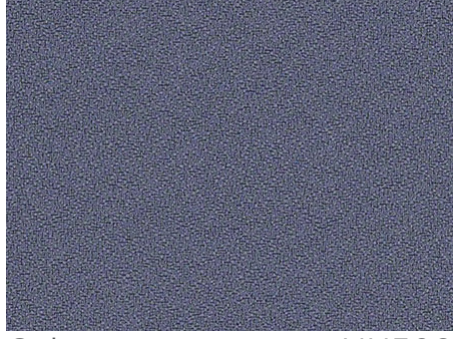
Brick NH434



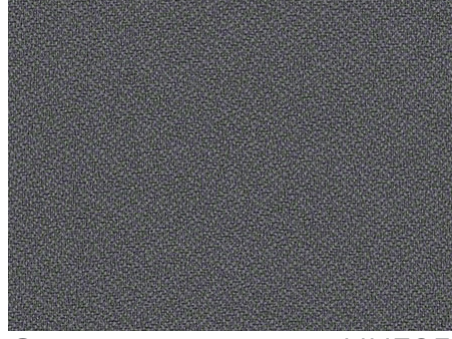
Cocoa NH424



Fire NH406



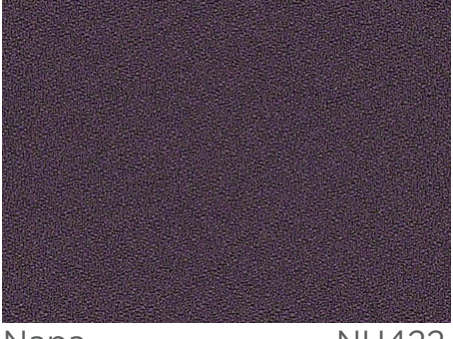
Galaxy NH509



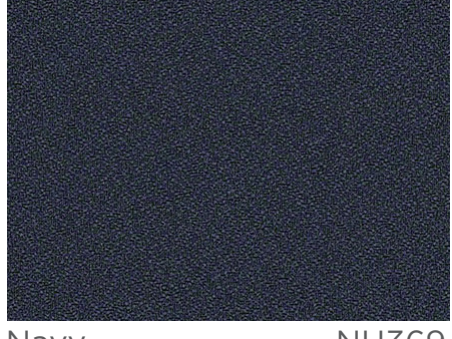
Grey NH395



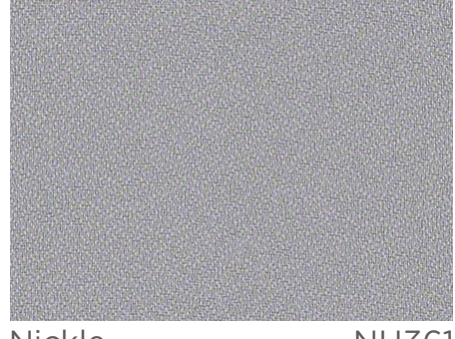
Jodhpurs NH420



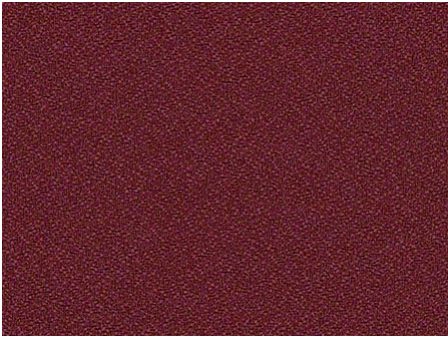
Napa NH422



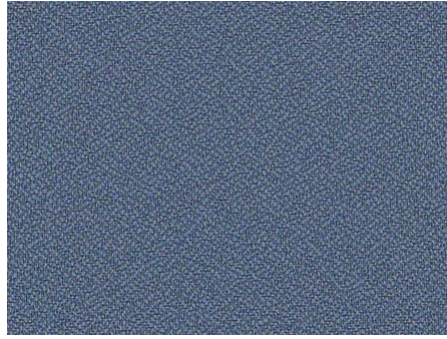
Navy NH369



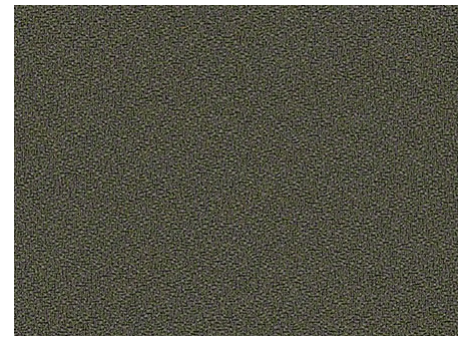
Nickle NH361



Red Red Wine NH389



Steel NH366



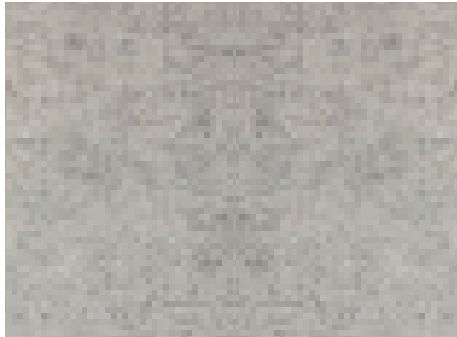
Zen NH425

New Hempstead

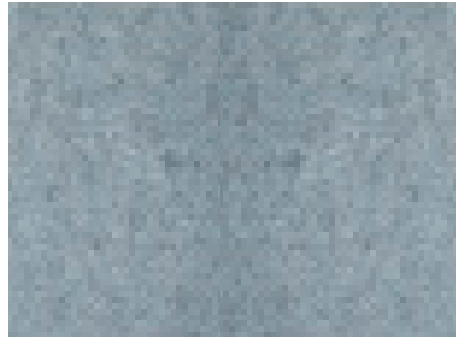
Content:	100% Polyester
Finish:	Non- PFOA Soil & Stain Resistant
Weight:	13.5 oz. +/-1.0 oz. per linear yard
Width:	54"
Abrasion Resistance (ASTM D4157):	Exceeds 750,000 double rubs Heavy Duty
Break Strength (ASTM D5034):	Warp: 336lbs min Fill: 325lbs min
Tear Strength (ASTM D2261):	Warp: 71 lbs min Fill: 59 lbs min
Seam Slippage (ASTM D4034):	Warp: 73 lbs min Fill: 82 lbs min
Brush Pill (ASTM D3511):	Class 4
Colorfastness to Light (AATCC 16):	60 hrs, Class 4 min
Crocking (AATCC8):	Dry: Class 4 min, Wet: Class 4 min
Flammability (NFPA 260):	Class 1
Flammability (UFAC)	Class 1



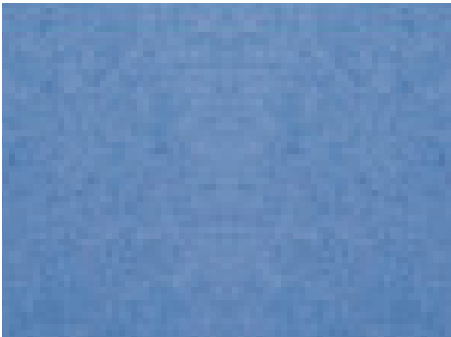
Fossil



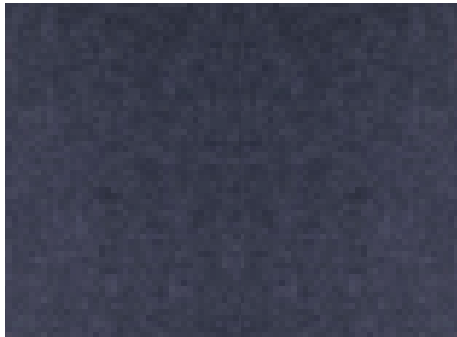
Greige



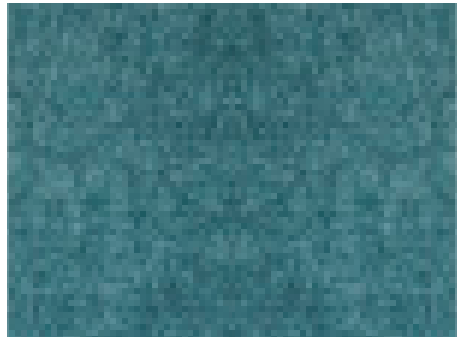
Cadet



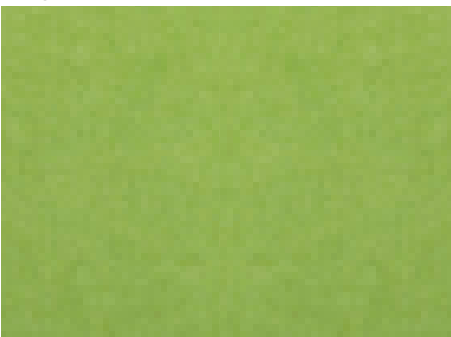
Sky



Cobalt



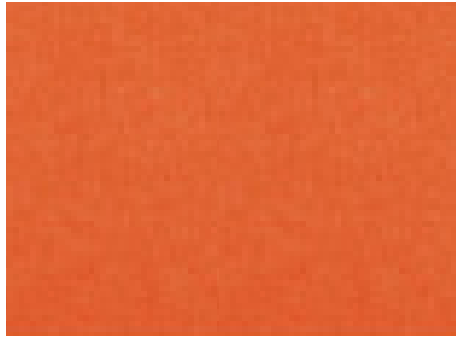
Malachite



Grass



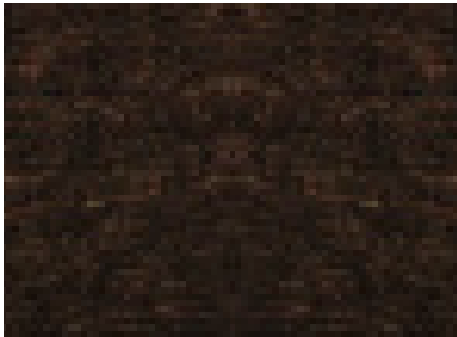
Sunshine



Mandarin



Ochre



Bark



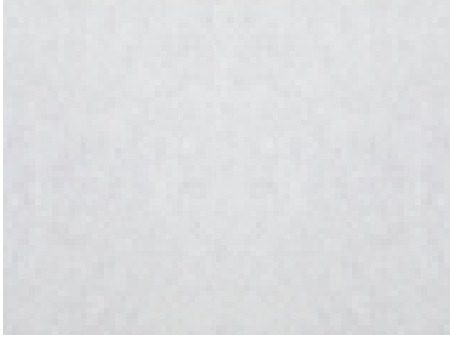
Ecru



Linen



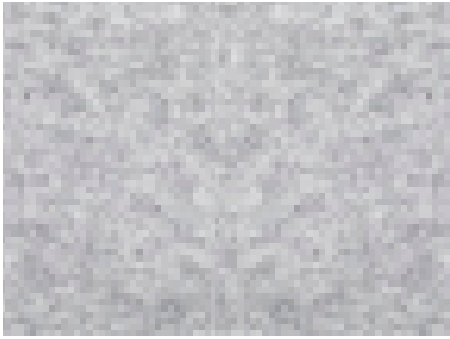
Ivory



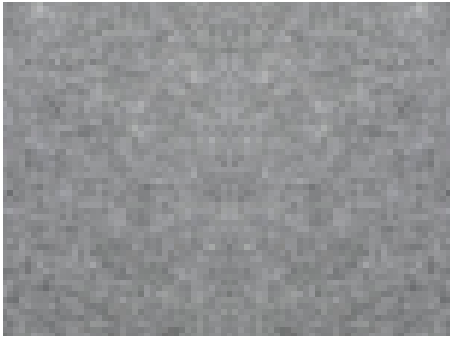
Frost



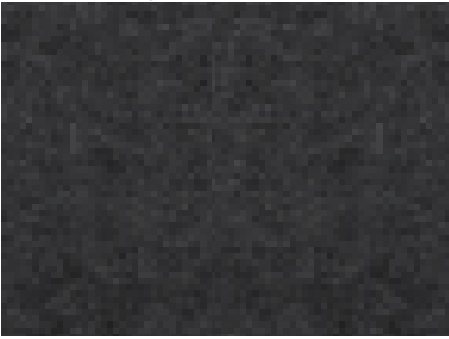
Chambray



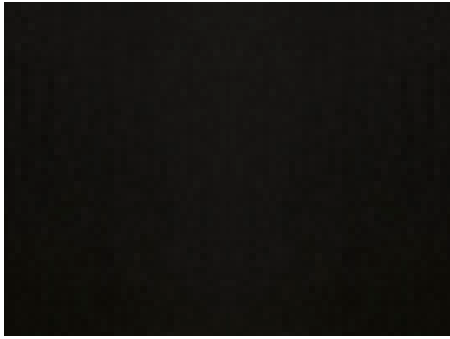
Smoke



Pewter



Slate



Tar



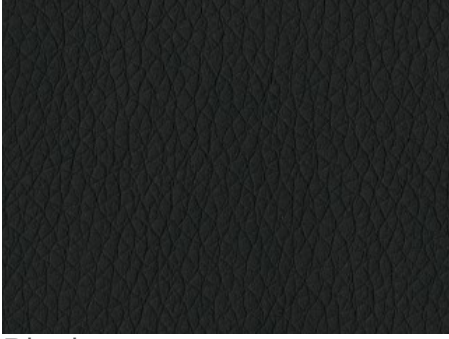
Fiesta



Cordovan



Buff



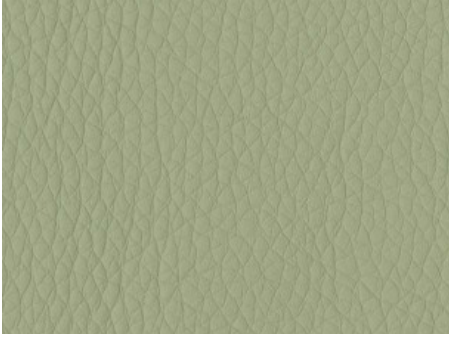
Black



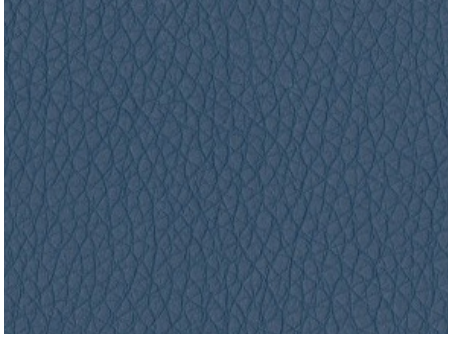
Williamsburg



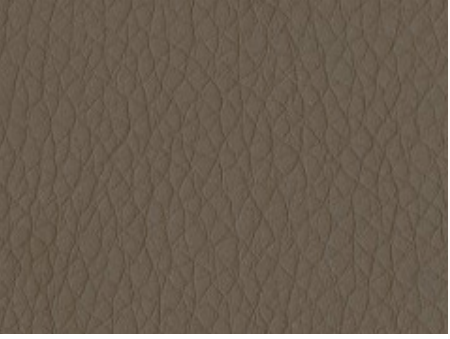
Stratus



Sage



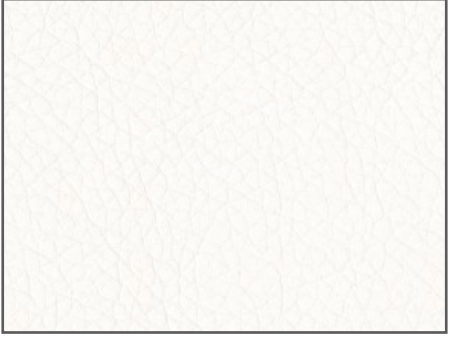
Ocean



Java



Luggage



Snow



Lipstick

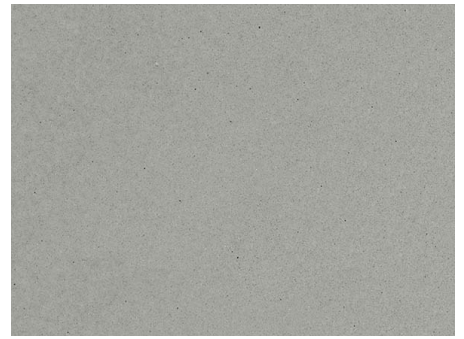
20 yards or less - \$14.90 / yard
21 yards or more - \$13.25 / yard



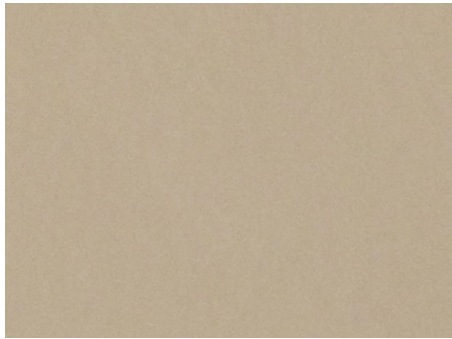
Regroup White



Gray Tone



*Metallic Silver



Beige



Smoke



Graphite



*Metallic Beige



Regroup Silver



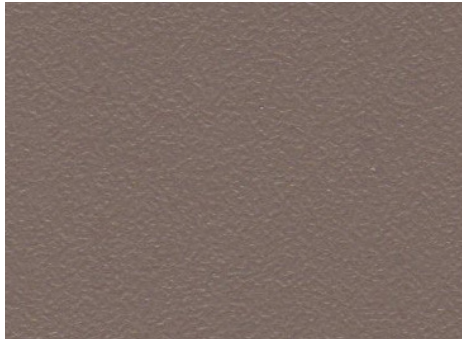
Charcoal

A 10% upcharge applies to painted product for the following finishes;

- Custom paint match
- Metallic Beige
- Metallic Silver



White



Shadow



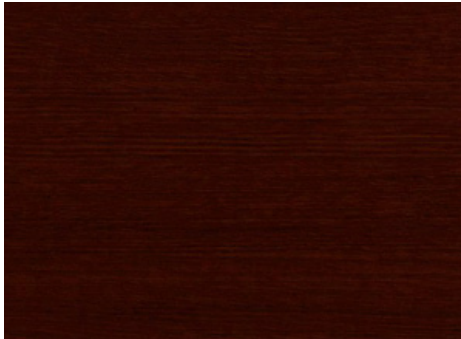
Ankara Cherry



Wallaby



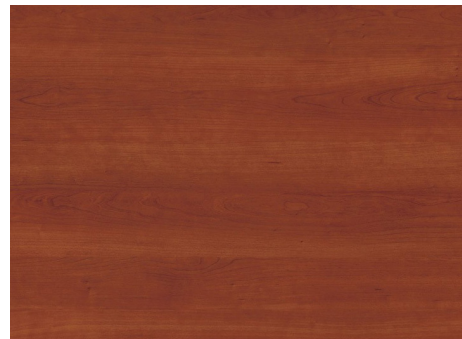
Cabinet Maple



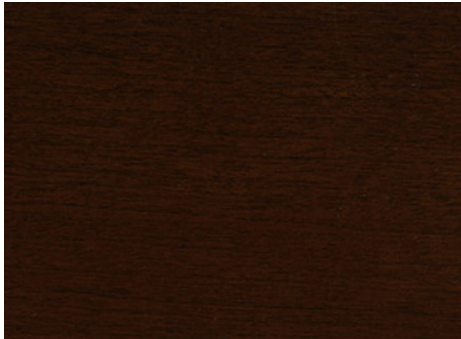
Brazilian Walnut



Dark Grey



Harvest Cherry



Cherry Hill Plank



Sterling Ash



Karruna Ash

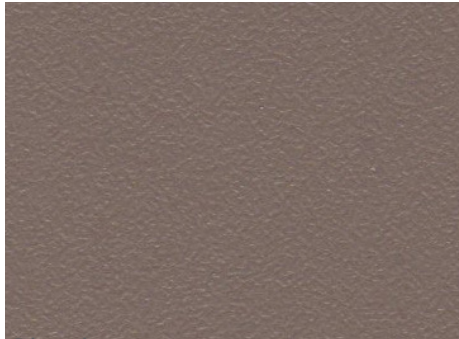


Chique

Please refer to the Wilsonart contract standards for high pressure laminate selection.
An upcharge will be applied for all premium and HD premium colors.



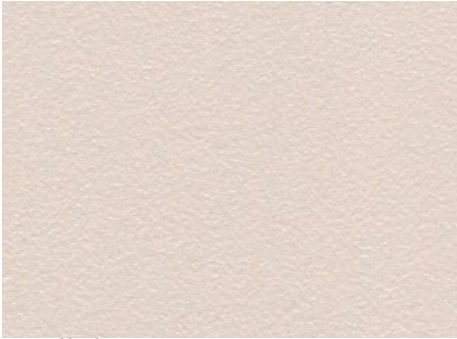
White



Shadow



Ankara Cherry



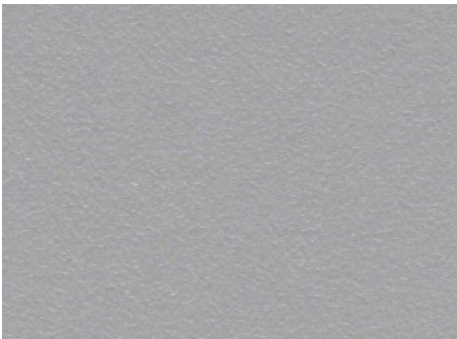
Wallaby



Cabinet Maple



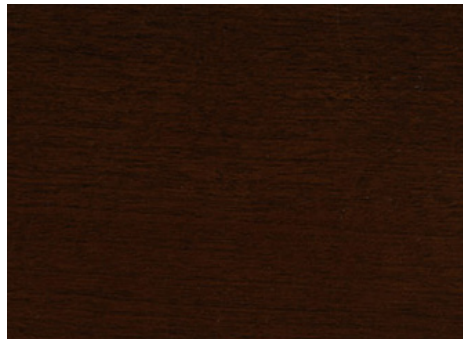
Brazilian Walnut



Dark Grey



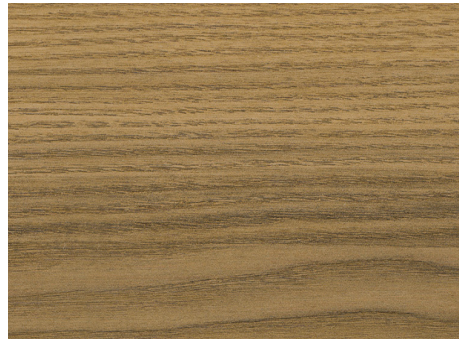
Harvest Cherry



Cherry Hill Plank



Sterling Ash



Karruna Ash



Chique



905 South Menard Avenue
Chicago, IL 60644
www.rework-furniture.com
furniture@rework-furniture.com
P 866.920.7759