



Finishes You've Never Seen Before®

7/8" CORRUGATED

7/8" Corrugated Metal Roofing & Wall Panels Have Deep Wavy Corrugations.

Available Materials: Aluminum, Copper, Corten/A606-4, Steel

Available Finishes: Bare Steel, Galvalume®/Zincalume®, Galvanized, Kynar®/PVDF, SMP Painted

SPECIFICATIONS:

Profile Type:	7/8" Corrugated
Rib Height:	7/8"
Rib Distance (Pitch):	2.67" Pitch
Overall Width:	39"
Coil Feed:	48"
Warranty:	40 year limited*
Coverage Area	
Roof:	34.67"
Wall:	37"
Available Gauges:	24, 26**
Substrate:	AZ 50 Minimum (Galvalume®/Zincalume®)
Finish:	Cool Tech® 500 - PVDF Resin Based (AKA Kynar 500®/Hylar 5000®)
Fasteners:	Exposed
Panel Length:	1' to 52'
Recommended Minimum Roof Slope:	3/12
Installation:	Can be installed over an open purlin system or a solid substrate. Use bead mastic on the overlap if used for a roofing application.

*Limited warranty. Please review prior to purchase.

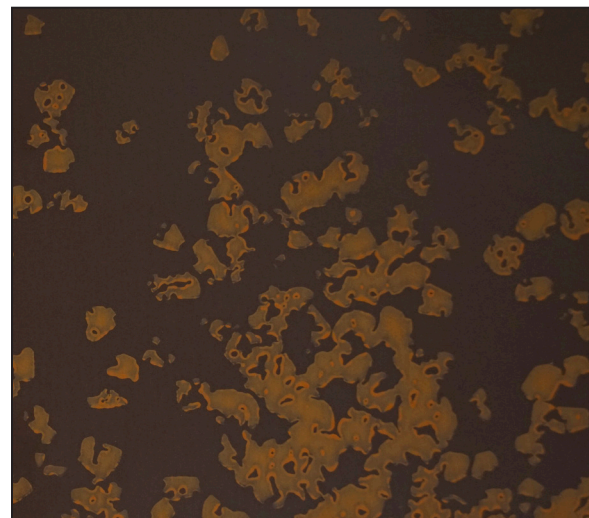
**SPECIAL ORDER / CHECK COIL AVAILABILITY

TESTING AND APPROVALS:

- UL 2218A Impact Resistance – Class 4
- UL 790 Fire Resistance Rating – Class A, per building code
- UL 580 Wind Uplift Resistance – Class 90 Construction

APPLIES TO THE FOLLOWING COLORS/FINISHES:

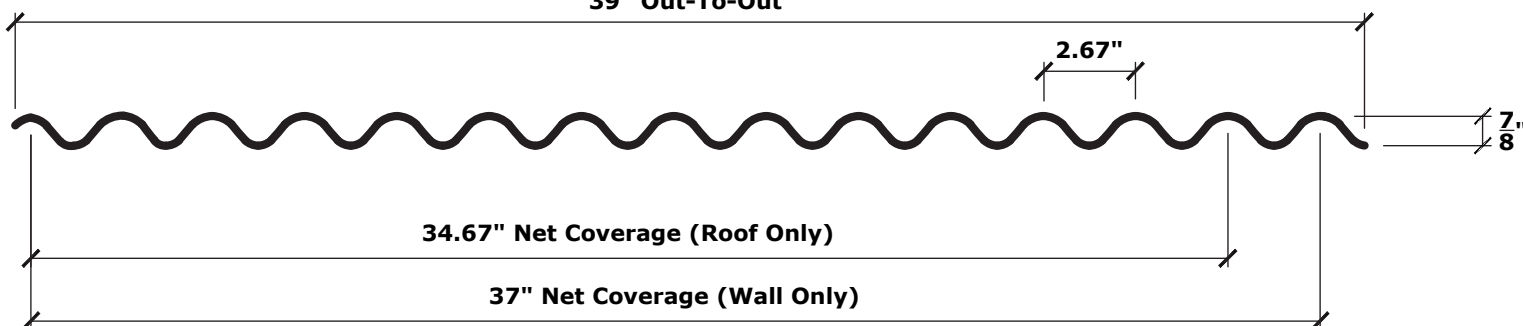
- Iron Rust®



PROFILE:

7/8" Corrugated

39" Out-To-Out



***There can be variance in the overall width of up to 1". This will NOT lessen roof/wall coverage.

Colors represented on this profile sheet may not match actual material. All colors should be verified using an actual metal color sample.



7/8" CORRUGATED

GRAVITY LOAD CHART

Finishes You've Never Seen Before®

GRAVITY - TOTAL ALLOWABLE LOAD IN PSF (SPAN IN FEET)

Gauge	Span Type	Load Type	3	3.5	4	4.5	5	6	7	8	9	10
26 (Fy=80ksi)	Single Span	Stress	141.8	104.2	79.7	63.0	51.0	35.4	26.0	19.9	15.8	12.8
		Deflection	79.6	50.1	33.6	23.6	17.2	9.9	6.3	4.2	2.9	2.1
	2 Spans	Stress	139.9	102.7	78.7	62.2	50.3	35.0	25.7	19.7	15.5	12.6
		Deflection	189.4	119.2	79.9	56.1	40.9	23.7	14.9	10.0	7.0	5.1
	3 Spans or More	Stress	163.2	119.9	91.8	72.5	58.8	40.8	30.0	23.0	18.1	14.7
		Deflection	157.5	99.2	66.4	46.7	34.0	19.7	12.4	8.3	5.8	4.3

24 (Fy=50ksi)	Single Span	Stress	185.7	136.5	104.5	82.5	66.9	46.4	34.1	26.1	20.6	16.7
		Deflection	103.1	64.9	43.5	30.6	22.3	12.9	8.1	5.4	3.8	2.8
	2 Spans	Stress	185.3	136.1	104.2	82.3	66.7	46.3	34.0	26.1	20.6	16.7
		Deflection	248.4	156.4	104.8	73.6	53.7	31.0	19.6	13.1	9.2	6.7
	3 Spans or More	Stress	216.2	158.8	121.6	96.1	77.8	54.1	39.7	30.4	24.0	19.5
		Deflection	206.6	130.1	87.1	61.2	44.6	25.8	16.3	10.9	7.7	5.6

22 (Fy=50ksi)	Single Span	Stress	235.0	172.6	132.2	104.4	84.6	58.7	43.2	33.0	26.1	21.1
		Deflection	134.3	84.6	56.7	39.8	29.0	16.8	10.6	7.1	5.0	3.6
	2 Spans	Stress	235.0	172.6	132.2	104.4	84.6	58.7	43.2	33.0	26.1	21.1
		Deflection	323.5	203.7	136.5	95.9	69.9	40.4	25.5	17.1	12.0	8.7
	3 Spans or More	Stress	274.2	201.5	154.3	121.9	98.7	68.6	50.4	38.6	30.5	24.7
		Deflection	269.0	169.4	113.5	79.7	58.1	33.6	21.2	14.2	10.0	7.3

20 (Fy=40ksi)	Single Span	Stress	189.8	139.4	106.8	84.3	68.3	47.4	34.9	26.7	21.1	17.1
		Deflection	154.7	97.4	65.3	45.8	33.4	19.3	12.2	8.2	5.7	4.2
	2 Spans	Stress	189.8	139.4	106.8	84.3	68.3	47.4	34.9	26.7	21.1	17.1
		Deflection	372.6	234.6	257.2	110.4	80.5	46.6	29.3	19.6	13.8	10.1
	3 Spans or More	Stress	221.5	162.7	124.6	98.4	79.7	55.4	40.7	31.1	24.6	19.9
		Deflection	309.8	195.1	130.7	91.8	66.9	38.7	24.4	16.3	11.5	8.4

Section Properties			Top In Compression			Bott. In Compression		
Gauge	fy	wt	ix	sx	ma	ix	sx	ma
	(ksi)	(psf)	(in ⁴ /ft)	(in ³ /ft)	(kip-in)	(in ⁴ /ft)	(in ³ /ft)	(kip-in)
26	80	0.92	0.0250	0.0533	1.9139	0.0247	0.0526	1.8880
24	50	1.17	0.0324	0.0704	2.5074	0.0324	0.0696	2.5009
22	50	1.49	0.0422	0.0891	3.1722	0.0422	0.0883	3.1722
20	40	1.75	0.0486	0.1079	2.5620	0.0486	0.1070	2.5620
Max Deflection:		180						

**CALL FOR A QUOTE
OR REQUEST A FREE
METAL COLOR SAMPLE**

Affordable Delivery throughout USA,
Canada, and Mexico



Finishes You've Never Seen Before®

7/8" CORRUGATED

UPLIFT LOAD CHART

UPLIFT - TOTAL ALLOWABLE LOAD IN PSF (SPAN IN FEET)

Gauge	Span Type	Load Type	3	3.5	4	4.5	5	6	7	8	9	10
26 (Fy=80ksi)	Single Span	Stress	139.9	102.7	78.7	62.2	50.3	35.0	25.7	19.7	15.5	12.6
		Deflection	78.6	49.5	33.2	23.3	17.0	9.8	6.2	4.1	2.9	2.1
	2 Spans	Stress	141.8	104.2	79.7	63.0	51.0	35.4	26.0	19.9	15.8	12.8
		Deflection	191.7	120.7	80.9	56.8	41.4	24.0	15.1	10.1	7.1	5.2
	3 Spans or More	Stress	165.5	121.6	93.1	73.5	59.6	41.4	30.4	23.3	18.4	14.9
		Deflection	159.4	100.4	67.2	47.2	34.4	19.9	12.5	8.4	5.9	4.3

24 (Fy=50ksi)	Single Span	Stress	185.3	136.1	104.2	82.3	66.7	46.3	34.0	26.1	20.6	16.7
		Deflection	103.1	64.9	43.5	30.6	22.3	12.9	8.1	5.4	3.8	2.8
	2 Spans	Stress	185.7	136.5	104.5	82.5	66.9	46.4	34.1	26.1	20.6	16.7
		Deflection	248.4	156.4	104.8	73.6	53.7	31.0	19.6	13.1	9.2	6.7
	3 Spans or More	Stress	216.8	159.3	121.9	96.3	78.0	54.2	39.8	30.5	24.1	19.5
		Deflection	206.6	130.1	87.1	61.2	44.6	25.8	16.3	10.9	7.7	5.6

22 (Fy=50ksi)	Single Span	Stress	235.0	172.6	132.2	104.4	84.6	58.7	43.2	33.0	26.1	21.1
		Deflection	134.3	84.6	56.7	39.8	29.0	16.8	10.6	7.1	5.0	3.6
	2 Spans	Stress	235.0	172.6	132.2	104.4	84.6	58.7	43.2	33.0	26.1	21.1
		Deflection	323.5	203.7	136.5	95.9	69.9	40.4	25.5	17.1	12.0	8.7
	3 Spans or More	Stress	274.2	201.5	154.3	121.9	98.7	68.6	50.4	38.6	30.5	24.7
		Deflection	269.0	169.4	113.5	79.7	58.1	33.6	21.2	14.2	10.0	7.3

20 (Fy=40ksi)	Single Span	Stress	189.8	139.4	106.8	84.3	68.3	47.4	34.9	26.7	21.1	17.1
		Deflection	154.7	97.4	65.3	45.8	33.4	19.3	12.2	8.2	5.7	4.2
	2 Spans	Stress	189.8	139.4	106.8	84.3	68.3	47.4	34.9	26.7	21.1	17.1
		Deflection	372.6	234.6	257.2	110.4	80.5	46.6	29.3	19.6	13.8	10.1
	3 Spans or More	Stress	221.5	162.7	124.6	98.4	79.7	55.4	40.7	31.1	24.6	19.9
		Deflection	309.8	195.1	130.7	91.8	66.9	38.7	24.4	16.3	11.5	8.4

Section Properties			Top In Compression			Bott. In Compression		
Gauge	fy	wt	ix	sx	ma	ix	sx	ma
	(ksi)	(psf)	(in ⁴ /ft)	(in ³ /ft)	(kip-in)	(in ⁴ /ft)	(in ³ /ft)	(kip-in)
26	80	0.92	0.0250	0.0533	1.9139	0.0247	0.0526	1.8880
24	50	1.17	0.0324	0.0704	2.5074	0.0324	0.0696	2.5009
22	50	1.49	0.0422	0.0891	3.1722	0.0422	0.0883	3.1722
20	40	1.75	0.0486	0.1079	2.5620	0.0486	0.1070	2.5620
Max Deflection:		180						

**CALL FOR A QUOTE
OR REQUEST A FREE
METAL COLOR SAMPLE**

Affordable Delivery throughout USA,
Canada, and Mexico