



Finishes You've Never Seen Before®

7/8" CORRUGATED

7/8" Corrugated Metal Roofing & Wall Panels Have Deep Wavy Corrugations.

Available Materials: Aluminum, Copper, Corten/A606-4, Steel

Available Finishes: Bare Steel, Galvalume®/Zincalume®, Galvanized, Kynar®/PVDF, SMP Painted

SPECIFICATIONS:

| | |
|---------------------------------|----------------------------------------------------------------|
| Profile Type: | 7/8" Corrugated |
| Rib Height: | 7/8" |
| Rib Distance (Pitch): | 2.67" Pitch |
| Overall Width: | 29" |
| Coil Feed: | 36" |
| Warranty: | 35 year limited* |
| Coverage Area | |
| Roof: | 23.50" |
| Wall: | 26" |
| Available Gauges: | 22****, 24 |
| Substrate: | AZ 50 Minimum (Galvalume®/Zincalume®) |
| Finish: | Cool Tech® 500 - PVDF Resin Based (AKA Kynar 500®/Hylar 5000®) |
| Fasteners: | Exposed |
| Panel Length: | 1' to 52' |
| Recommended Minimum Roof Slope: | 3/12 |

Installation: Can be installed over an open purlin system or a solid substrate. Use bead mastic on the overlap if used for a roofing application.

*Limited warranty. Please review prior to purchase.

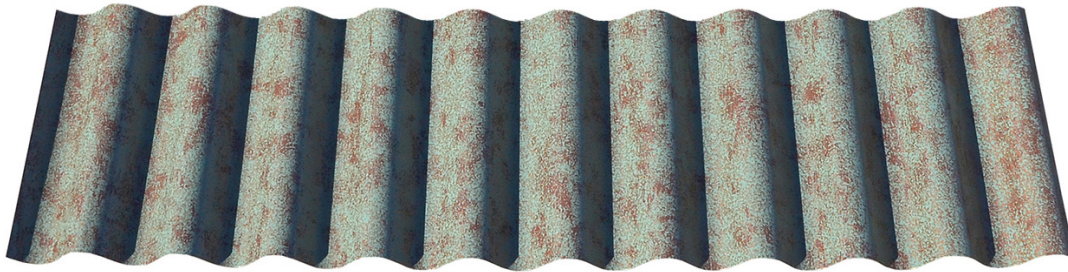
****AVAILABLE IN 22 GA / SPECIAL ORDER INQUIRE WITH SALES PERSON

TESTING AND APPROVALS:

- UL 2218A Impact Resistance – Class 4
- UL 790 Fire Resistance Rating – Class A, per building code
- UL 580 Wind Uplift Resistance – Class 90 Construction

APPLIES TO THE FOLLOWING COLORS/FINISHES:

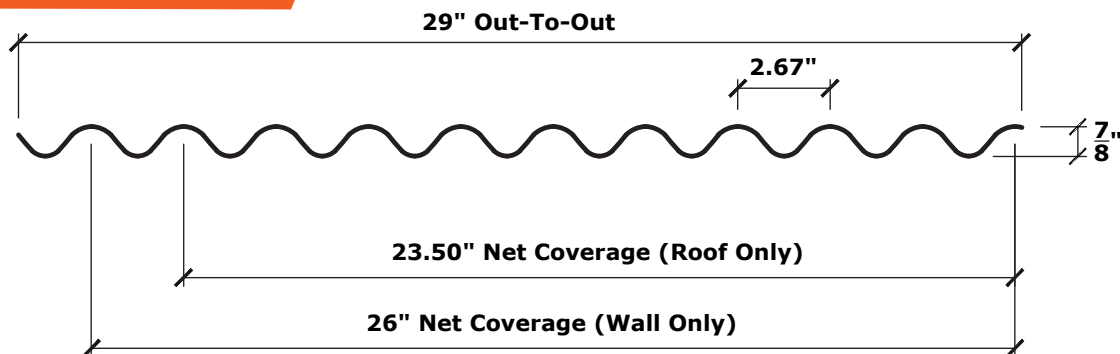
- Copper Patina®



Shown in Copper Patina®

PROFILE:

7/8" Corrugated



***There can be variance in the overall width of up to 1". This will NOT lessen roof/wall coverage.

Colors represented on this profile sheet may not match actual material. All colors should be verified using an actual metal color sample.



7/8" CORRUGATED

GRAVITY LOAD CHART

Finishes You've Never Seen Before®

GRAVITY - TOTAL ALLOWABLE LOAD IN PSF (SPAN IN FEET)

| Gauge | Span Type | Load Type | 3 | 3.5 | 4 | 4.5 | 5 | 6 | 7 | 8 | 9 | 10 |
|------------------|-----------------|------------|-------|-------|------|------|------|------|------|------|------|------|
| 26 (Fy=80ksi) | Single Span | Stress | 141.8 | 104.2 | 79.7 | 63.0 | 51.0 | 35.4 | 26.0 | 19.9 | 15.8 | 12.8 |
| | | Deflection | 79.6 | 50.1 | 33.6 | 23.6 | 17.2 | 9.9 | 6.3 | 4.2 | 2.9 | 2.1 |
| | 2 Spans | Stress | 139.9 | 102.7 | 78.7 | 62.2 | 50.3 | 35.0 | 25.7 | 19.7 | 15.5 | 12.6 |
| | | Deflection | 189.4 | 119.2 | 79.9 | 56.1 | 40.9 | 23.7 | 14.9 | 10.0 | 7.0 | 5.1 |
| | 3 Spans or More | Stress | 163.2 | 119.9 | 91.8 | 72.5 | 58.8 | 40.8 | 30.0 | 23.0 | 18.1 | 14.7 |
| | | Deflection | 157.5 | 99.2 | 66.4 | 46.7 | 34.0 | 19.7 | 12.4 | 8.3 | 5.8 | 4.3 |

| | | | | | | | | | | | | |
|------------------|-----------------|------------|-------|-------|-------|------|------|------|------|------|------|------|
| 24 (Fy=50ksi) | Single Span | Stress | 185.7 | 136.5 | 104.5 | 82.5 | 66.9 | 46.4 | 34.1 | 26.1 | 20.6 | 16.7 |
| | | Deflection | 103.1 | 64.9 | 43.5 | 30.6 | 22.3 | 12.9 | 8.1 | 5.4 | 3.8 | 2.8 |
| | 2 Spans | Stress | 185.3 | 136.1 | 104.2 | 82.3 | 66.7 | 46.3 | 34.0 | 26.1 | 20.6 | 16.7 |
| | | Deflection | 248.4 | 156.4 | 104.8 | 73.6 | 53.7 | 31.0 | 19.6 | 13.1 | 9.2 | 6.7 |
| | 3 Spans or More | Stress | 216.2 | 158.8 | 121.6 | 96.1 | 77.8 | 54.1 | 39.7 | 30.4 | 24.0 | 19.5 |
| | | Deflection | 206.6 | 130.1 | 87.1 | 61.2 | 44.6 | 25.8 | 16.3 | 10.9 | 7.7 | 5.6 |

| | | | | | | | | | | | | |
|------------------|-----------------|------------|-------|-------|-------|-------|------|------|------|------|------|------|
| 22 (Fy=50ksi) | Single Span | Stress | 235.0 | 172.6 | 132.2 | 104.4 | 84.6 | 58.7 | 43.2 | 33.0 | 26.1 | 21.1 |
| | | Deflection | 134.3 | 84.6 | 56.7 | 39.8 | 29.0 | 16.8 | 10.6 | 7.1 | 5.0 | 3.6 |
| | 2 Spans | Stress | 235.0 | 172.6 | 132.2 | 104.4 | 84.6 | 58.7 | 43.2 | 33.0 | 26.1 | 21.1 |
| | | Deflection | 323.5 | 203.7 | 136.5 | 95.9 | 69.9 | 40.4 | 25.5 | 17.1 | 12.0 | 8.7 |
| | 3 Spans or More | Stress | 274.2 | 201.5 | 154.3 | 121.9 | 98.7 | 68.6 | 50.4 | 38.6 | 30.5 | 24.7 |
| | | Deflection | 269.0 | 169.4 | 113.5 | 79.7 | 58.1 | 33.6 | 21.2 | 14.2 | 10.0 | 7.3 |

| | | | | | | | | | | | | |
|------------------|-----------------|------------|-------|-------|-------|-------|------|------|------|------|------|------|
| 20 (Fy=40ksi) | Single Span | Stress | 189.8 | 139.4 | 106.8 | 84.3 | 68.3 | 47.4 | 34.9 | 26.7 | 21.1 | 17.1 |
| | | Deflection | 154.7 | 97.4 | 65.3 | 45.8 | 33.4 | 19.3 | 12.2 | 8.2 | 5.7 | 4.2 |
| | 2 Spans | Stress | 189.8 | 139.4 | 106.8 | 84.3 | 68.3 | 47.4 | 34.9 | 26.7 | 21.1 | 17.1 |
| | | Deflection | 372.6 | 234.6 | 257.2 | 110.4 | 80.5 | 46.6 | 29.3 | 19.6 | 13.8 | 10.1 |
| | 3 Spans or More | Stress | 221.5 | 162.7 | 124.6 | 98.4 | 79.7 | 55.4 | 40.7 | 31.1 | 24.6 | 19.9 |
| | | Deflection | 309.8 | 195.1 | 130.7 | 91.8 | 66.9 | 38.7 | 24.4 | 16.3 | 11.5 | 8.4 |

| Section Properties | | | Top In Compression | | | Bott. In Compression | | |
|------------------------|-------|------------|-----------------------|-----------------------|----------|-----------------------|-----------------------|----------|
| Gauge | fy | wt | ix | sx | ma | ix | sx | ma |
| | (ksi) | (psf) | (in ⁴ /ft) | (in ³ /ft) | (kip-in) | (in ⁴ /ft) | (in ³ /ft) | (kip-in) |
| 26 | 80 | 0.92 | 0.0250 | 0.0533 | 1.9139 | 0.0247 | 0.0526 | 1.8880 |
| 24 | 50 | 1.17 | 0.0324 | 0.0704 | 2.5074 | 0.0324 | 0.0696 | 2.5009 |
| 22 | 50 | 1.49 | 0.0422 | 0.0891 | 3.1722 | 0.0422 | 0.0883 | 3.1722 |
| 20 | 40 | 1.75 | 0.0486 | 0.1079 | 2.5620 | 0.0486 | 0.1070 | 2.5620 |
| Max Deflection: | | 180 | | | | | | |

**CALL FOR A QUOTE
OR REQUEST A FREE
METAL COLOR SAMPLE**

Affordable Delivery throughout USA,
Canada, and Mexico

Colors represented on this profile sheet may not match actual material. All colors should be verified using an actual metal color sample.



7/8" CORRUGATED

UPLIFT LOAD CHART

Finishes You've Never Seen Before®

UPLIFT - TOTAL ALLOWABLE LOAD IN PSF (SPAN IN FEET)

| Gauge | Span Type | Load Type | 3 | 3.5 | 4 | 4.5 | 5 | 6 | 7 | 8 | 9 | 10 |
|------------------|-----------------|------------|-------|-------|------|------|------|------|------|------|------|------|
| 26 (Fy=80ksi) | Single Span | Stress | 139.9 | 102.7 | 78.7 | 62.2 | 50.3 | 35.0 | 25.7 | 19.7 | 15.5 | 12.6 |
| | | Deflection | 78.6 | 49.5 | 33.2 | 23.3 | 17.0 | 9.8 | 6.2 | 4.1 | 2.9 | 2.1 |
| | 2 Spans | Stress | 141.8 | 104.2 | 79.7 | 63.0 | 51.0 | 35.4 | 26.0 | 19.9 | 15.8 | 12.8 |
| | | Deflection | 191.7 | 120.7 | 80.9 | 56.8 | 41.4 | 24.0 | 15.1 | 10.1 | 7.1 | 5.2 |
| | 3 Spans or More | Stress | 165.5 | 121.6 | 93.1 | 73.5 | 59.6 | 41.4 | 30.4 | 23.3 | 18.4 | 14.9 |
| | | Deflection | 159.4 | 100.4 | 67.2 | 47.2 | 34.4 | 19.9 | 12.5 | 8.4 | 5.9 | 4.3 |

| | | | | | | | | | | | | |
|------------------|-----------------|------------|-------|-------|-------|------|------|------|------|------|------|------|
| 24 (Fy=50ksi) | Single Span | Stress | 185.3 | 136.1 | 104.2 | 82.3 | 66.7 | 46.3 | 34.0 | 26.1 | 20.6 | 16.7 |
| | | Deflection | 103.1 | 64.9 | 43.5 | 30.6 | 22.3 | 12.9 | 8.1 | 5.4 | 3.8 | 2.8 |
| | 2 Spans | Stress | 185.7 | 136.5 | 104.5 | 82.5 | 66.9 | 46.4 | 34.1 | 26.1 | 20.6 | 16.7 |
| | | Deflection | 248.4 | 156.4 | 104.8 | 73.6 | 53.7 | 31.0 | 19.6 | 13.1 | 9.2 | 6.7 |
| | 3 Spans or More | Stress | 216.8 | 159.3 | 121.9 | 96.3 | 78.0 | 54.2 | 39.8 | 30.5 | 24.1 | 19.5 |
| | | Deflection | 206.6 | 130.1 | 87.1 | 61.2 | 44.6 | 25.8 | 16.3 | 10.9 | 7.7 | 5.6 |

| | | | | | | | | | | | | |
|------------------|-----------------|------------|-------|-------|-------|-------|------|------|------|------|------|------|
| 22 (Fy=50ksi) | Single Span | Stress | 235.0 | 172.6 | 132.2 | 104.4 | 84.6 | 58.7 | 43.2 | 33.0 | 26.1 | 21.1 |
| | | Deflection | 134.3 | 84.6 | 56.7 | 39.8 | 29.0 | 16.8 | 10.6 | 7.1 | 5.0 | 3.6 |
| | 2 Spans | Stress | 235.0 | 172.6 | 132.2 | 104.4 | 84.6 | 58.7 | 43.2 | 33.0 | 26.1 | 21.1 |
| | | Deflection | 323.5 | 203.7 | 136.5 | 95.9 | 69.9 | 40.4 | 25.5 | 17.1 | 12.0 | 8.7 |
| | 3 Spans or More | Stress | 274.2 | 201.5 | 154.3 | 121.9 | 98.7 | 68.6 | 50.4 | 38.6 | 30.5 | 24.7 |
| | | Deflection | 269.0 | 169.4 | 113.5 | 79.7 | 58.1 | 33.6 | 21.2 | 14.2 | 10.0 | 7.3 |

| | | | | | | | | | | | | |
|------------------|-----------------|------------|-------|-------|-------|-------|------|------|------|------|------|------|
| 20 (Fy=40ksi) | Single Span | Stress | 189.8 | 139.4 | 106.8 | 84.3 | 68.3 | 47.4 | 34.9 | 26.7 | 21.1 | 17.1 |
| | | Deflection | 154.7 | 97.4 | 65.3 | 45.8 | 33.4 | 19.3 | 12.2 | 8.2 | 5.7 | 4.2 |
| | 2 Spans | Stress | 189.8 | 139.4 | 106.8 | 84.3 | 68.3 | 47.4 | 34.9 | 26.7 | 21.1 | 17.1 |
| | | Deflection | 372.6 | 234.6 | 257.2 | 110.4 | 80.5 | 46.6 | 29.3 | 19.6 | 13.8 | 10.1 |
| | 3 Spans or More | Stress | 221.5 | 162.7 | 124.6 | 98.4 | 79.7 | 55.4 | 40.7 | 31.1 | 24.6 | 19.9 |
| | | Deflection | 309.8 | 195.1 | 130.7 | 91.8 | 66.9 | 38.7 | 24.4 | 16.3 | 11.5 | 8.4 |

| Section Properties | | | Top In Compression | | | Bott. In Compression | | |
|------------------------|-------|------------|-----------------------|-----------------------|----------|-----------------------|-----------------------|----------|
| Gauge | fy | wt | ix | sx | ma | ix | sx | ma |
| | (ksi) | (psf) | (in ⁴ /ft) | (in ³ /ft) | (kip-in) | (in ⁴ /ft) | (in ³ /ft) | (kip-in) |
| 26 | 80 | 0.92 | 0.0250 | 0.0533 | 1.9139 | 0.0247 | 0.0526 | 1.8880 |
| 24 | 50 | 1.17 | 0.0324 | 0.0704 | 2.5074 | 0.0324 | 0.0696 | 2.5009 |
| 22 | 50 | 1.49 | 0.0422 | 0.0891 | 3.1722 | 0.0422 | 0.0883 | 3.1722 |
| 20 | 40 | 1.75 | 0.0486 | 0.1079 | 2.5620 | 0.0486 | 0.1070 | 2.5620 |
| Max Deflection: | | 180 | | | | | | |

**CALL FOR A QUOTE
OR REQUEST A FREE
METAL COLOR SAMPLE**

Affordable Delivery throughout USA,
Canada, and Mexico

Colors represented on this profile sheet may not match actual material. All colors should be verified using an actual metal color sample.