

WESTERN STATES METAL ROOFING



CORTENROOFING.COM

RUSTED ROOFING AND WALL PANELS

**Corten/A606-4 Weathering Steel and Bare Cold Rolled Steel
Roofing, Siding, Metal Wall Panels, Coil, Flat Sheets**

Immediate Availability. Inexpensive Delivery.
Route Trucks Servicing the USA and Canada

Call Today for a Free Quote!
855-4Corten

WESTERN STATES METAL ROOFING

901 W. Watkins St., Phoenix, AZ 85007

Toll Free: 855-4CORTEN (855-426-7836)

cortenroofing.com | sales@cortenroofing.com



About Us

Since 1996, Western States Metal Roofing has been the leading provider of weathering steel products. We offer the largest selection of structural components and metal roofing products designed to meet or exceed your building requirement needs. With manufacturing and storage facilities strategically placed throughout the United States, our company specializes in buying Corten in large quantities and then passing those cost savings on to the end user. We inventory large quantities of A606-4, A588 and A847 steel so we can ship Corten steel quickly and inexpensively.

WESTERN STATES METAL ROOFING



Our Service

Because we value relationships and understand the importance of efficiency, we offer superior customer service and satisfaction with product support through project completion. Our sales staff consists of knowledgeable individuals with experience in design, development and construction. Most importantly, our entire staff is dedicated to helping you receive your materials on time so you can begin your project without interruption to your business and project timeline.

Our Commitment

Western States Metal Roofing is committed to your satisfaction. For over 20 years, we have serviced homeowners, metal roofers, general contractors, architects, engineers and design professionals with metal roofing products at prices direct from the manufacturer.





METAL ROOFING & METAL WALL PANELS: ASTM A606-4 (AKA CORTEN) OR BARE COLD ROLLED

Material does not arrive pre-rusted. Panel will rust naturally with exposure to the weather. Use stainless steel fasteners with a painted brown screw head.

Available Panel Profiles:



7/8" Corrugated



R-Panel - 1.25" Deep



Western Reveal® - 1.5" Deep

Mix and Match Different Reveals, Face Sizes and Widths.



Western Wave® - 7/8" Deep
Horizontal & Vertical Wall Panel



SS675 Standing Seam - 1.75" Deep
Clip System Standing Seam



Western Rib® (7.2 Panel) - 1.5" Deep



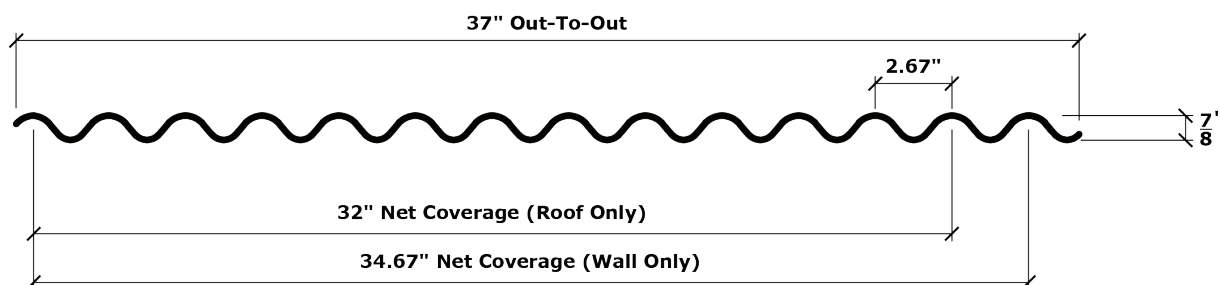
RustWall® - 1" Deep
Flush Wall/Soffit Panel

Corten Components:

Coil	Tube
Flat Sheets	Pipe
Plate	Beams
Flat Bars	Squares
Angle	Rounds
Channel	

7/8" CORRUGATED

Available in A606-4 (aka Corten®) or Bare Cold Rolled Steel



There can be variance in the overall width of up to 1". This will NOT lessen roof/wall coverage.

SPECIFICATIONS

Material Type: 7/8" Corrugated

Rib Distance (Pitch): 2.67" Pitch

Rib Height: 7/8"

Available Gauges:

- **A606-4 (aka Corten®):** 20, 22
- **Bare Cold Rolled:** 20, 22, 24

Substrate: A606-4 or Bare Cold Rolled

Fasteners: Exposed

Panel Length: 1' to 52'

Recommended Minimum Roof Slope: 3/12

Installation: Over a solid substrate



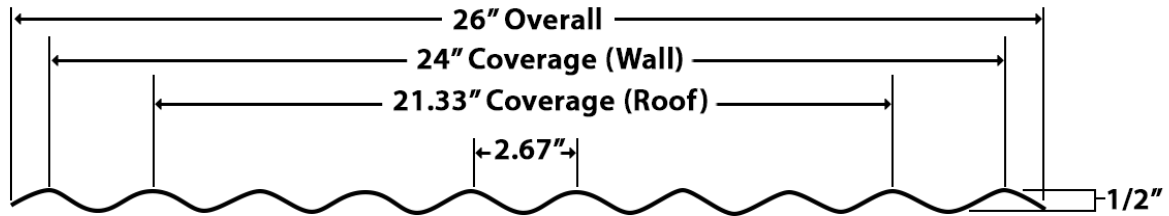
RECOMMENDATIONS AND CAUTIONS

- A606-4 and Bare Steel performs best in environments with low humidity
- Load calculations and load tables DO NOT APPLY TO ANY A606 OR BARE STEEL PRODUCT.
- A606-4 should not be used with dissimilar metals other than stainless steel. This will decrease the lifespan of the product.
- Screws and clips for A606-4/Corten MUST be stainless steel. Screw head will be painted brown.
- Roofing Underlayment Should be a HIGH TEMPERATURE UNDERLAYMENT.
- Minimum roof slope 3:12 recommended.
- Not recommended near salt spray environments and frequent rain locations as it will shorten the life expectancy of the products.
- Acid washing will degrade steel performance.
- Rust runoff will likely stain the surrounding surfaces.
- NO WARRANTIES FOR THESE PRODUCTS

Material does not arrive pre-rusted. Panel will rust naturally with exposure to the weather. Use stainless steel fasteners with a painted brown screw head.

1/2" CORRUGATED

Available in A606-4 (aka Corten®) or Bare Cold Rolled Steel. A606-4 Custom Order Only. Bare Cold Rolled in Stock.



SPECIFICATIONS

Material Type: 1/2" Corrugated

Rib Distance (Pitch): 2.67" Pitch

Rib Height: 1/2"

Available Gauges:

- **A606-4 (aka Corten®):** 22 (Custom Order Only)
- **Bare Cold Rolled:** 22 (In Stock)

Substrate: A606-4 or Bare Cold Rolled

Fasteners: Exposed

Panel Length: 1' to 52'

Recommended Minimum Roof Slope: 3/12

Installation: Over a solid substrate

RECOMMENDATIONS AND CAUTIONS

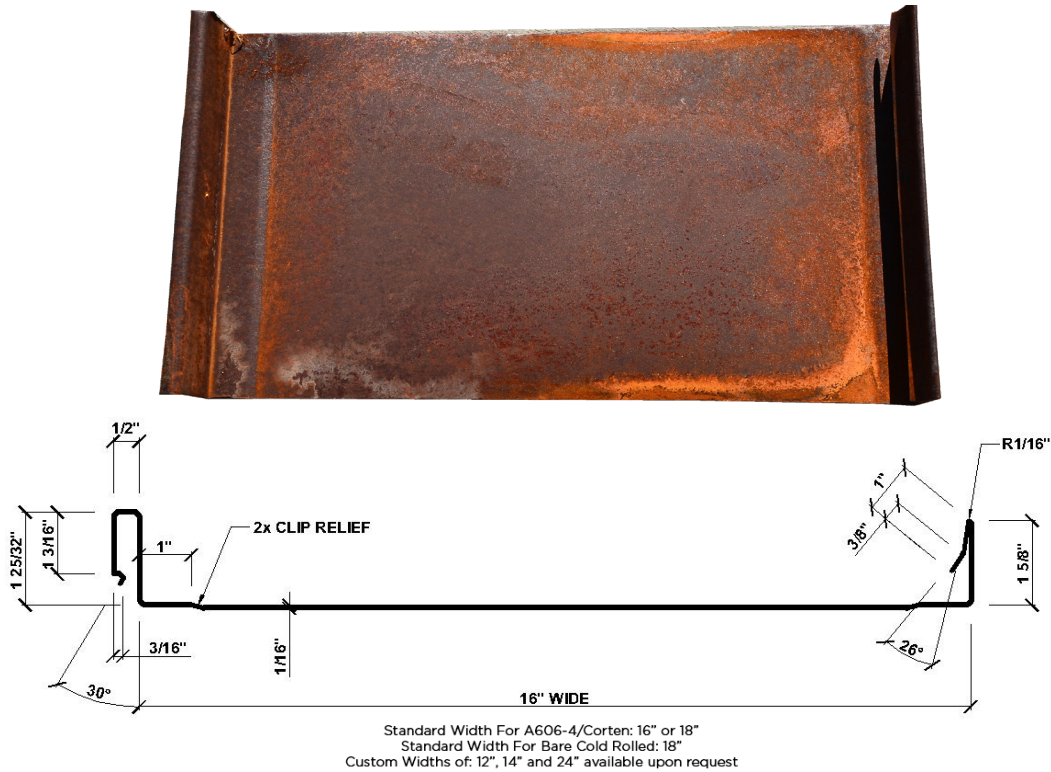
- A606-4 and Bare Steel performs best in environments with low humidity
- Load calculations and load tables DO NOT APPLY TO ANY A606 OR BARE STEEL PRODUCT.
- A606-4 should not be used with dissimilar metals other than stainless steel. This will decrease the lifespan of the product.
- Screws and clips for A606-4/Corten MUST be stainless steel. Screw head will be painted brown.
- Roofing Underlayment Should be a HIGH TEMPERATURE UNDERLAYMENT.
- Minimum roof slope 3:12 recommended.
- Not recommended near salt spray environments and frequent rain locations as it will shorten the life expectancy of the products.
- Acid washing will degrade steel performance.
- Rust runoff will likely stain the surrounding surfaces.
- NO WARRANTIES FOR THESE PRODUCTS



Material does not arrive pre-rusted. Panel will rust naturally with exposure to the weather. Use stainless steel fasteners with a painted brown screw head.

SS675 Standing Seam - 1.75" Deep

Available in A606-4 (aka Corten®) or Bare Cold Rolled Steel. Also available with or without battens.



SPECIFICATIONS

Material Type: Standing Seam

Rib Height: 1.75"

Available Gauges:

- **A606-4 (aka Corten®):** 22
- **Bare Cold Rolled:** 22

Substrate: A606-4 or Bare Cold Rolled

Fasteners: Concealed

Panel Length: 1' to 52'

Recommended Minimum Roof Slope: 3/12

Installation: Over a solid substrate

RECOMMENDATIONS AND CAUTIONS

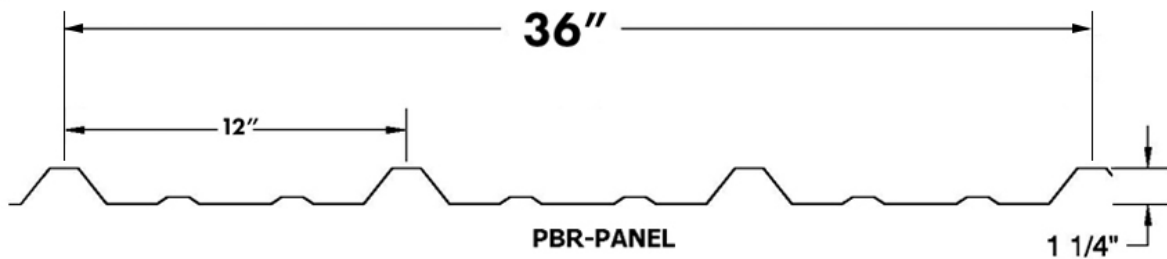
- A606-4 and Bare Steel performs best in environments with low humidity
- Load calculations and load tables DO NOT APPLY TO ANY A606 OR BARE STEEL PRODUCT.
- A606-4 should not be used with dissimilar metals other than stainless steel. This will decrease the lifespan of the product.
- Screws and clips for A606-4/Corten MUST be stainless steel. Screw head will be painted brown.
- Roofing Underlayment Should be a HIGH TEMPERATURE UNDERLAYMENT.
- Minimum roof slope 3:12 recommended.
- Not recommended near salt spray environments and frequent rain locations as it will shorten the life expectancy of the products.
- Acid washing will degrade steel performance.
- Rust runoff will likely stain the surrounding surfaces.
- NO WARRANTIES FOR THESE PRODUCTS



Material does not arrive pre-rusted. Panel will rust naturally with exposure to the weather. Use stainless steel fasteners with a painted brown screw head.

R PANEL/PBR PANEL

Available in A606-4 (aka Corten®) or Bare Cold Rolled Steel



SPECIFICATIONS

Material Type: Purlin Bearing R Panel

Rib Distance (Pitch): 12"

Rib Height: 1.25"

Available Gauges:

- **A606-4 (aka Corten®):** 22
- **Bare Cold Rolled:** 20, 22, 24

Substrate: A606-4 or Bare Cold Rolled

Fasteners: Exposed

Panel Length: 1' to 52'

Recommended Minimum Roof Slope: 3/12

Installation: Over a solid substrate



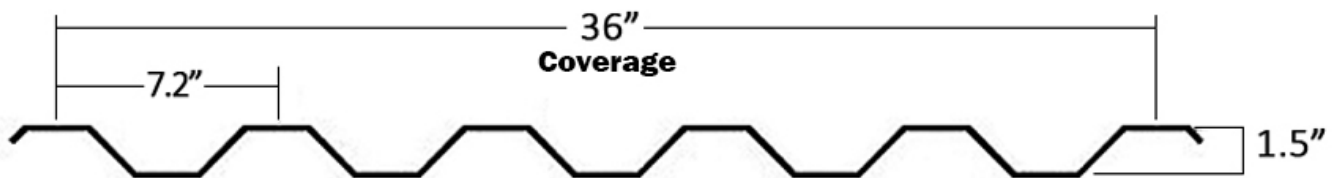
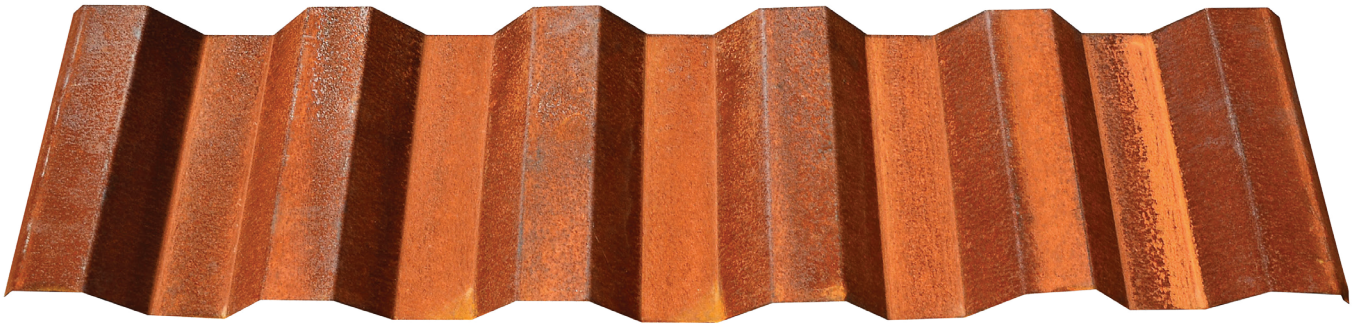
RECOMMENDATIONS AND CAUTIONS

- A606-4 and Bare Steel performs best in environments with low humidity
- Load calculations and load tables DO NOT APPLY TO ANY A606 OR BARE STEEL PRODUCT.
- A606-4 should not be used with dissimilar metals other than stainless steel. This will decrease the lifespan of the product.
- Screws and clips for A606-4/Corten MUST be stainless steel. Screw head will be painted brown.
- Roofing Underlayment Should be a HIGH TEMPERATURE UNDERLAYMENT.
- Minimum roof slope 3:12 recommended.
- Not recommended near salt spray environments and frequent rain locations as it will shorten the life expectancy of the products.
- Acid washing will degrade steel performance.
- Rust runoff will likely stain the surrounding surfaces.
- NO WARRANTIES FOR THESE PRODUCTS

Material does not arrive pre-rusted. Panel will rust naturally with exposure to the weather. Use stainless steel fasteners with a painted brown screw head.

Western Rib® (7.2 Panel)

Available in A606-4 (aka Corten®) or Bare Cold Rolled Steel



SPECIFICATIONS

Material Type: Western Rib® (7.2 Panel)

Rib Distance (Pitch): 7.2"

Rib Height: 1.5"

Available Gauges:

- **A606-4 (aka Corten®):** 20, 22
- **Bare Cold Rolled:** 20, 22, 24

Substrate: A606-4 or Bare Cold Rolled

Fasteners: Exposed

Panel Length: 1' to 52'

Recommended Minimum Roof Slope: 3/12

Installation: Over a solid substrate

RECOMMENDATIONS AND CAUTIONS

- A606-4 and Bare Steel performs best in environments with low humidity
- Load calculations and load tables DO NOT APPLY TO ANY A606 OR BARE STEEL PRODUCT.
- A606-4 should not be used with dissimilar metals other than stainless steel. This will decrease the lifespan of the product.
- Screws and clips for A606-4/Corten MUST be stainless steel. Screw head will be painted brown.
- Roofing Underlayment Should be a HIGH TEMPERATURE UNDERLAYMENT.
- Minimum roof slope 3:12 recommended.
- Not recommended near salt spray environments and frequent rain locations as it will shorten the life expectancy of the products.
- Acid washing will degrade steel performance.
- Rust runoff will likely stain the surrounding surfaces.
- NO WARRANTIES FOR THESE PRODUCTS



Material does not arrive pre-rusted. Panel will rust naturally with exposure to the weather. Use stainless steel fasteners with a painted brown screw head.

WESTERN REVEAL®

Horizontal or Vertical Installation. Available in A606-4 (aka Corten®) or Bare Cold Rolled Steel



MIX AND MATCH DIFFERENT REVEALS, FACE SIZES, AND WIDTHS

SPECIFICATIONS

Material Type: Western Reveal®

Rib Height: 1.5"

Panel Face: 12", 14", 16", 18"

Panel Reveal: 1", 2", 3", or No Reveal

Available Gauges:

- A606-4 (aka Corten®): 22
- Bare Cold Rolled: 22

Substrate: A606-4 or Bare Cold Rolled

Fasteners: Concealed

Panel Length: 1' to 35'

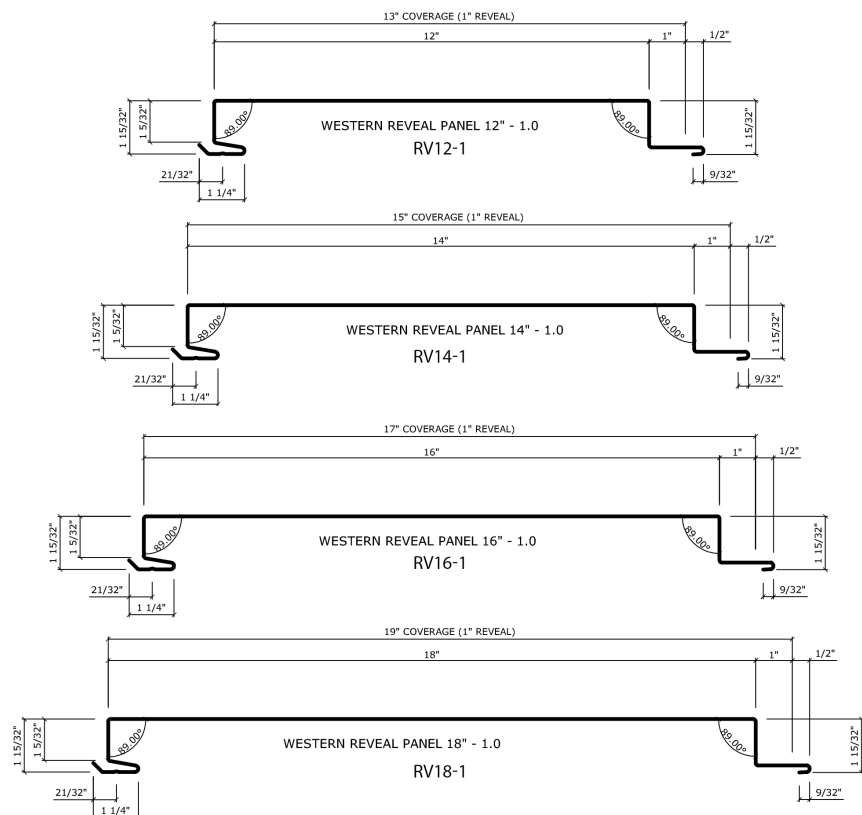
Installation: Over a solid substrate

Material does not arrive pre-rusted. Panel will rust naturally with exposure to the weather. Use stainless steel fasteners with a painted brown screw head.

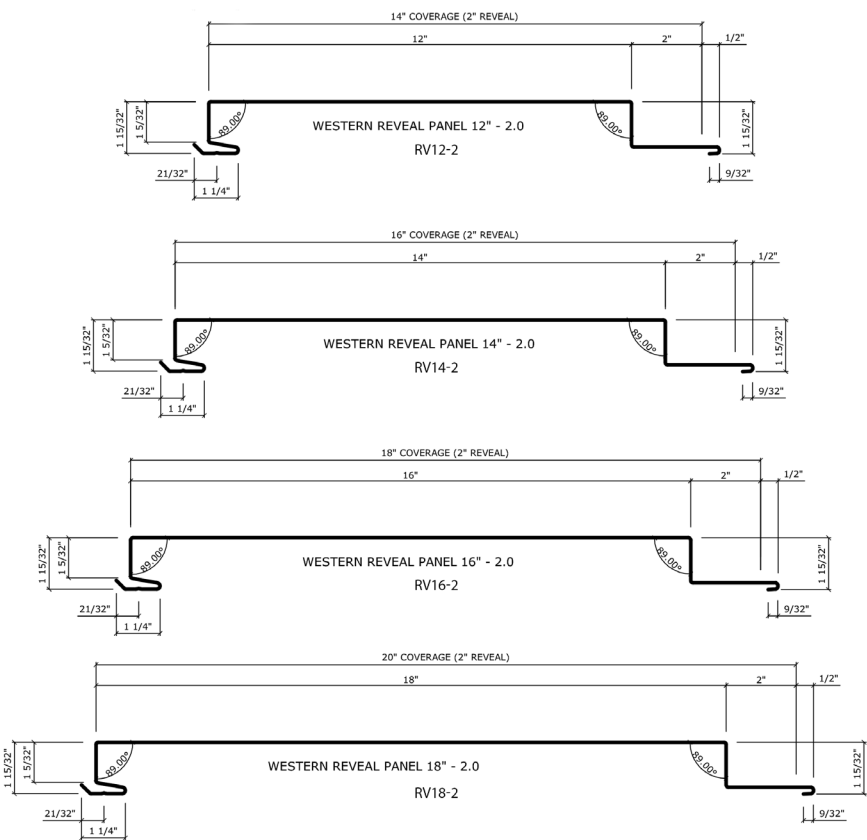
RECOMMENDATIONS AND CAUTIONS

- A606-4 and Bare Steel performs best in environments with low humidity
- Load calculations and load tables DO NOT APPLY TO ANY A606 OR BARE STEEL PRODUCT.
- A606-4 should not be used with dissimilar metals other than stainless steel. This will decrease the lifespan of the product.
- Screws and clips for A606-4/Corten MUST be stainless steel. Screw head will be painted brown.
- Underlayment should be a HIGH TEMPERATURE UNDERLAYMENT.
- Not recommended near salt spray environments and frequent rain locations as it will shorten the life expectancy of the products.
- Acid washing will degrade steel performance.
- Rust runoff will likely stain the surrounding surfaces.
- NO WARRANTIES FOR THESE PRODUCTS

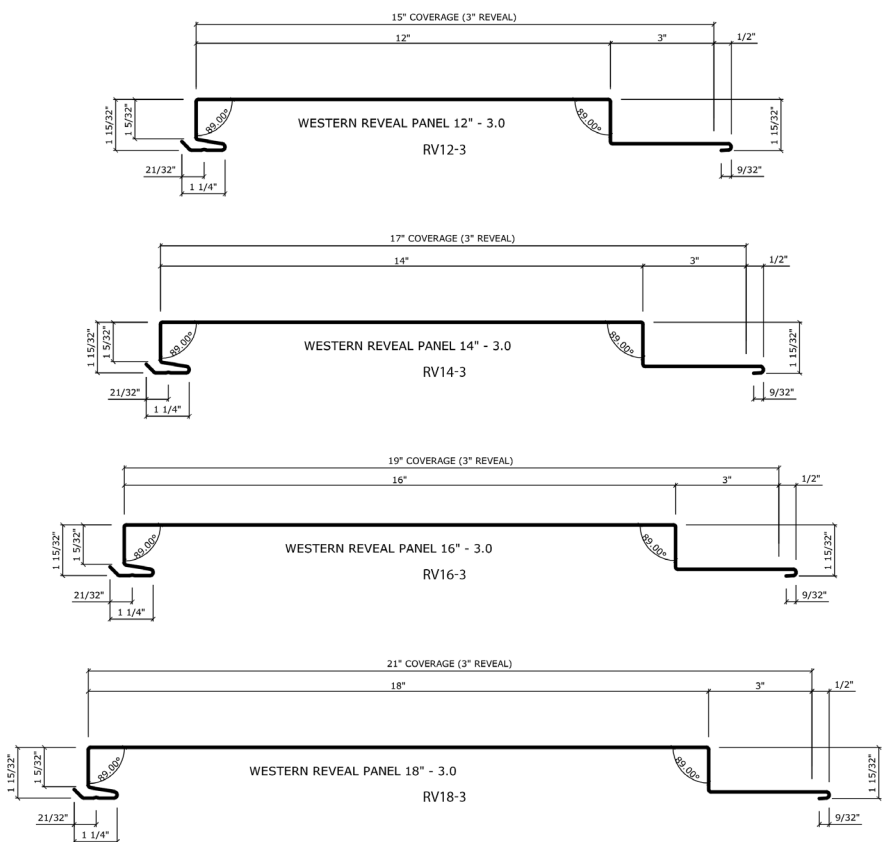
1" Reveal



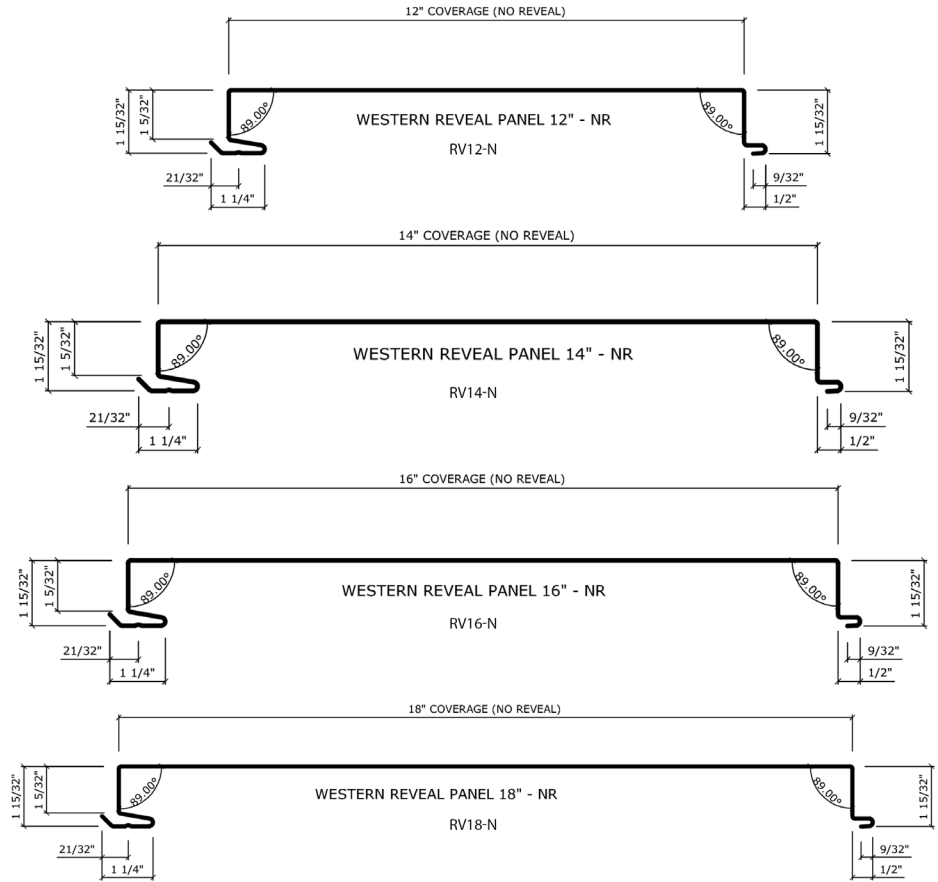
2" Reveal



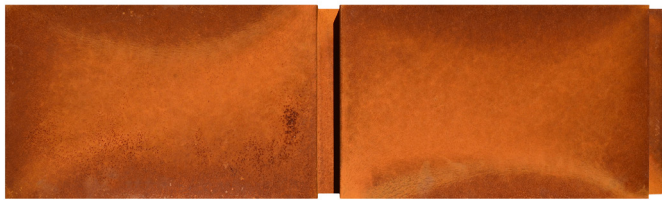
3" Reveal



No Reveal



When the panels are installed side-by-side horizontally, the reveal forms a vertical gap between panels - making your project even more fascinating. Mix and match panels for a unique design.



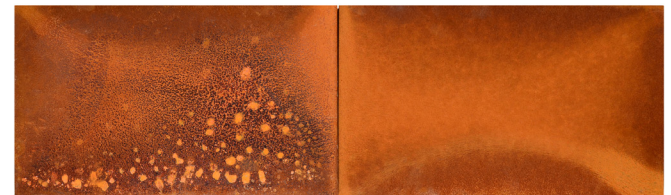
1" Reveal



2" Reveal



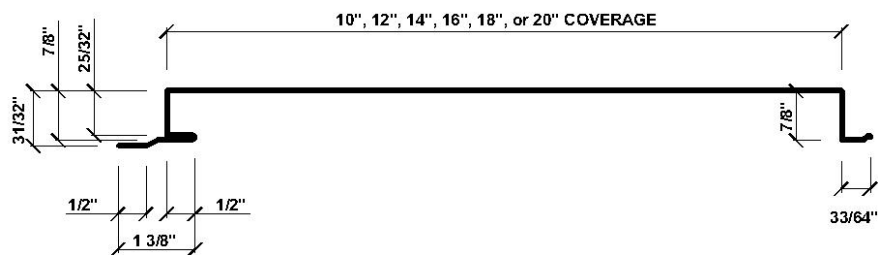
3" Reveal



No Reveal

Rustwall®

Available in A606-4 (aka Corten®) or Bare Cold Rolled Steel



18" Standard
Custom widths available upon request

SPECIFICATIONS

Material Type: Rustwall®

Rib Height: 1"

Standard Width: 18"

Custom Widths: 10", 12" 14" 16", 20"

Available Gauges:

- **A606-4 (aka Corten®):** 22
- **Bare Cold Rolled:** 22

Substrate: A606-4 or Bare Cold Rolled

Fasteners: Concealed

Panel Length: 1' to 35'

Installation: Over a solid substrate

RECOMMENDATIONS AND CAUTIONS

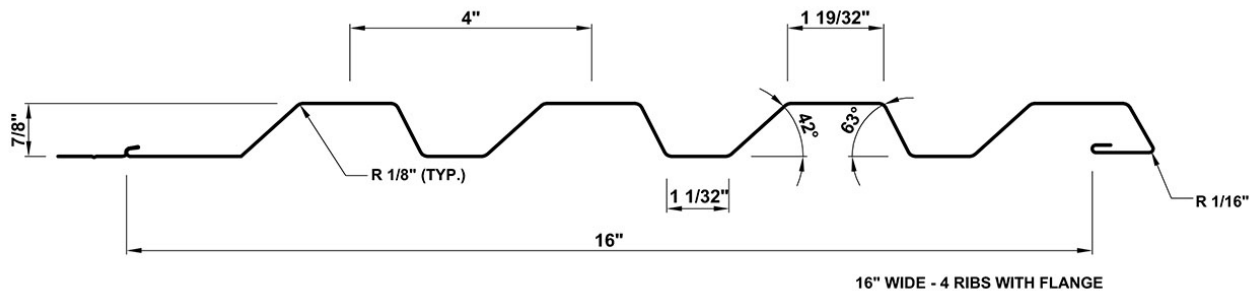
- A606-4 and Bare Steel performs best in environments with low humidity
- Load calculations and load tables DO NOT APPLY TO ANY A606 OR BARE STEEL PRODUCT.
- A606-4 should not be used with dissimilar metals other than stainless steel. This will decrease the lifespan of the product.
- Screws and clips for A606-4/Corten MUST be stainless steel. Screw head will be painted brown.
- Underlayment Should be a HIGH TEMPERATURE UNDERLAYMENT.
- Not recommended near salt spray environments and frequent rain locations as it will shorten the life expectancy of the products.
- Acid washing will degrade steel performance.
- Rust runoff will likely stain the surrounding surfaces.
- NO WARRANTIES FOR THESE PRODUCTS



Material does not arrive pre-rusted. Panel will rust naturally with exposure to the weather. Use stainless steel fasteners with a painted brown screw head.

WESTERN WAVE®

Available in A606-4 (aka Corten®) or Bare Cold Rolled Steel
Horizontal or Vertical Installation.



SPECIFICATIONS

Material Type: Western Wave®

Rib Height: 7/8"

Width: 16"

Rib Distance (Pitch): 4"

Available Gauges:

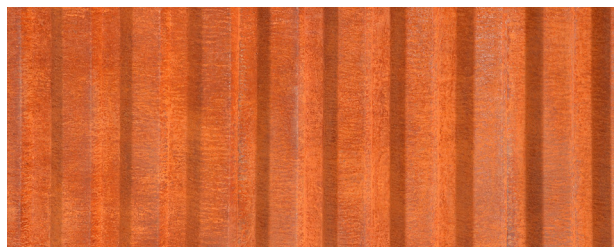
- **A606-4 (aka Corten®):** 22
- **Bare Cold Rolled:** 22

Substrate: A606-4 or Bare Cold Rolled

Fasteners: Concealed

Panel Length: 6' to 52'

Installation: Over a solid substrate



RECOMMENDATIONS AND CAUTIONS

- A606-4 and Bare Steel performs best in environments with low humidity
- Load calculations and load tables DO NOT APPLY TO ANY A606 OR BARE STEEL PRODUCT.
- A606-4 should not be used with dissimilar metals other than stainless steel. This will decrease the lifespan of the product.
- Screws and clips for A606-4/Corten MUST be stainless steel. Screw head will be painted brown.
- Underlayment Should be a HIGH TEMPERATURE UNDERLAYMENT.
- Not recommended near salt spray environments and frequent rain locations as it will shorten the life expectancy of the products.
- Acid washing will degrade steel performance.
- Rust runoff will likely stain the surrounding surfaces.
- NO WARRANTIES FOR THESE PRODUCTS

Material does not arrive pre-rusted. Panel will rust naturally with exposure to the weather. Use stainless steel fasteners with a painted brown screw head.

CORTEN COIL

A606-4 AND A588 WEATHERING STEEL

Coils can be slit to custom widths.



Coil Availability Chart

Gauge/Thickness

	22	20	18	16	14	12	11	10	8	3/16"	1/4"	3/8"	1/2"	3/4"
72"	■	■	■	■	■	■	■	■	■	●	●	●	●	●
60"	■	■	■	●	●	●	●	●	●	●	●	●	●	●
48"	●	●	●	●	●	●	●	●	●	●	●	●	●	●
46"	●	▲	▲	▲	▲	▲	▲	▲	▲	▲	▲	▲	▲	▲
43"	●	▲	▲	▲	▲	▲	▲	▲	▲	▲	▲	▲	▲	▲
24"	●	●	●	▲	▲	▲	▲	▲	▲	▲	▲	▲	▲	▲
22"	●	▲	▲	▲	▲	▲	▲	▲	▲	▲	▲	▲	▲	▲
20"	●	▲	▲	▲	▲	▲	▲	▲	▲	▲	▲	▲	▲	▲
18"	●	▲	▲	▲	▲	▲	▲	▲	▲	▲	▲	▲	▲	▲
14"	●	▲	▲	▲	▲	▲	▲	▲	▲	▲	▲	▲	▲	▲

● In Stock
▲ Custom Order
■ Not Available

RECOMMENDATIONS AND CAUTIONS

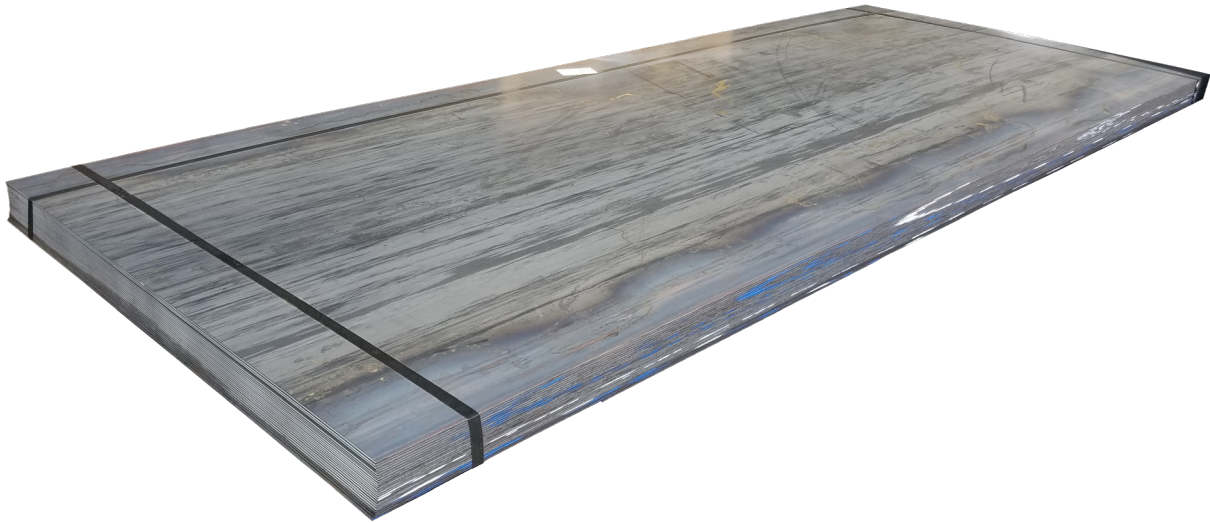
- A606-4 and Bare Steel performs best in environments with low humidity
 - A606-4 should not be used with dissimilar metals other than stainless steel. This will decrease the lifespan of the product.
 - Screws and clips for A606-4/Corten MUST be stainless steel. Screw head will be painted brown.
 - Roofing underlayment should be a HIGH TEMPERATURE UNDERLAYMENT.
- Not recommended near salt spray environments and frequent rain locations as it will shorten the life expectancy of the products.
 - Acid washing will degrade steel performance.
 - Rust runoff will likely stain the surrounding surfaces.
 - NO WARRANTIES FOR THESE PRODUCTS

Material does not arrive pre-rusted. Panel will rust naturally with exposure to the weather. Use stainless steel fasteners with a painted brown screw head.

CORTEN FLAT SHEETS

A606-4 AND A588 WEATHERING STEEL

48"/60"/72" Widths x 96"/120"/144" Lengths
Custom Widths and Lengths also Available.



Flat Sheets Availability Chart

		Gauge/Thickness													
		22	20	18	16	14	12	11	10	8	3/16"	1/4"	3/8"	1/2"	3/4"
Width	72"	■	■	■	■	■	■	■	■	■	●	●	●	●	●
	60"	■	■	■	●	●	●	●	●	●	●	●	●	●	●
	48"	●	●	●	●	●	●	●	●	●	●	●	●	●	●
	46"	●	▲	▲	▲	▲	▲	▲	▲	▲	▲	▲	▲	▲	▲
	43"	●	▲	▲	▲	▲	▲	▲	▲	▲	▲	▲	▲	▲	▲
	24"	●	●	●	▲	▲	▲	▲	▲	▲	▲	▲	▲	▲	▲
	22"	●	▲	▲	▲	▲	▲	▲	▲	▲	▲	▲	▲	▲	▲
	20"	●	▲	▲	▲	▲	▲	▲	▲	▲	▲	▲	▲	▲	▲
	18"	●	▲	▲	▲	▲	▲	▲	▲	▲	▲	▲	▲	▲	▲
	14"	●	▲	▲	▲	▲	▲	▲	▲	▲	▲	▲	▲	▲	▲
		● In Stock ▲ Custom Order ■ Not Available													

RECOMMENDATIONS AND CAUTIONS

- A606-4 and Bare Steel performs best in environments with low humidity
- A606-4 should not be used with dissimilar metals other than stainless steel. This will decrease the lifespan of the product.
- Screws and clips for A606-4/Corten MUST be stainless steel. Screw head will be painted brown.
- Roofing underlayment should be a HIGH TEMPERATURE UNDERLAYMENT.
- Not recommended near salt spray environments and frequent rain locations as it will shorten the life expectancy of the products.
- Acid washing will degrade steel performance.
- Rust runoff will likely stain the surrounding surfaces.
- NO WARRANTIES FOR THESE PRODUCTS

Material does not arrive pre-rusted. Panel will rust naturally with exposure to the weather. Use stainless steel fasteners with a painted brown screw head.



Streaked Rust® - 7/8" Corrugated

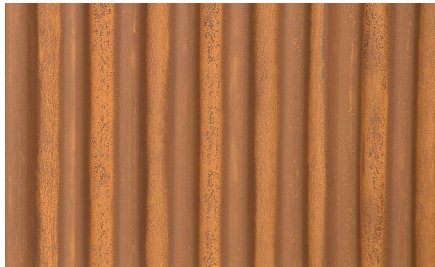
PRE-PAINTED METAL THAT LOOKS RUSTED

ROOFING PANELS • WALL PANELS • FLAT SHEETS • COIL • TRIM

In this series you will find each paint print was meticulously designed to duplicate the various stages of rusting in absolute detail. From the distinctive contrast between corrugations in Streaked Rust® to the deep orange and brown patina of Speckled Rust®, we're sure you will find that our painted panels are not only unique, but will truly turn your building design into a work of art.

AVAILABLE COLORS IN THIS SERIES:

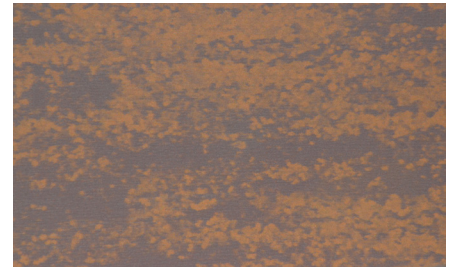
These color samples are as close as possible to actual colors offered within the limits of color reproduction. Substrate subject to change.



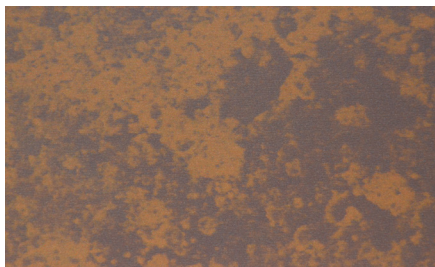
† Streaked Rust®



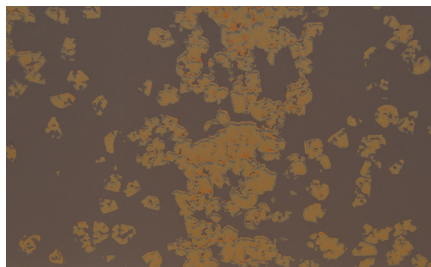
Speckled Rust®



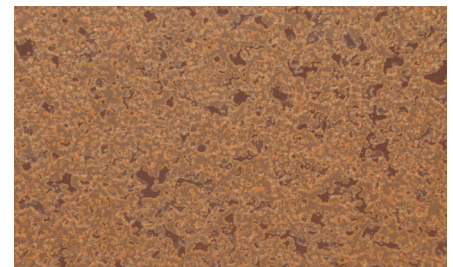
Corten AZP Raw®



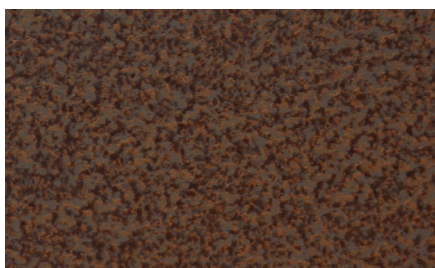
Fresh Rust®



†† Iron Rust®



†† Antique Rustic®



Weathered Rustic®



† Streaked Galvanized Rust®



Speckled Galvanized Rust®

† Available only in 7/8" Corrugated

†† Available only in a 26 gauge SMP Paint Finish System