

October
INVENTORY
- HOME -
SALE-A-THON



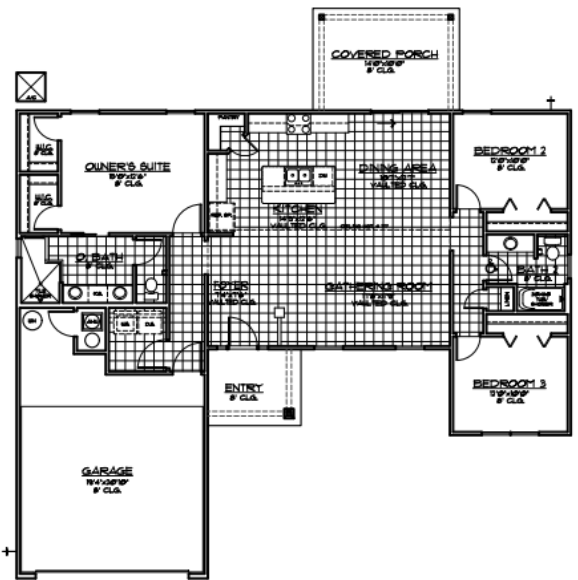
LOT 2-68
THE RANCH HOUSE
1/2 ACRE HOMESITES

SEDA PAYS
UP TO
\$8,000*
TOWARD TOTAL
CLOSING COSTS
ON THESE
INVENTORY
HOMES

BUCKHEAD

lot 2-68- The Ranch House 1,567 sq. ft
 3 bedroom, 2 bathrooms
 1/2 acre homesite
 tile foyer, kitchen, hallways, laundry and bathrooms
 stainless steel appliances
 covered back porch

\$244,900



CONTACT:
 Larry Lanier
 904-573-6026
 lanier@sedanewhomes.com



www.SEDAnewhomes.com

CGC020880. SEDA Construction Company. Closing costs special applies for full priced contracts written between 10/1/20-10/31/20 for qualifying INVENTORY HOMES only and must close within 30 days of contract date. SEDA pays amount shown toward total closing costs with SEDA approved lender. This offer is for a limited time only & cannot be combined with any other specials. Price & availability subject to change without notice. Renderings are only for display purposes, actual color may vary. 9/30/20





BUCKHEAD

**SEDA PAYS UP TO
\$8,000
TOWARD TOTAL
CLOSING COSTS***

Build a new home in the Buckhead between October 1-31st and SEDA will pay up to \$8,000 toward total closing costs.* Pick your plan, pick your lot, pick your options and let us help you build the home of your dreams!

COMMUNITY HIGHLIGHTS:

- Homes from the mid \$200's in Nassau County
- 1/2 acre homesites
- Boat and RV parking allowed
- Serene community located close to 13,385 acre Cary State Forest
- No CDD fees



CONTACT: Larry Lanier (904) 573-6026 cell (904) 237-5844 llanier@sedanewhomes.com

SEDA Construction Company-CGC020880 *See agent for details- In Buckhead, SEDA pays up to \$8,000 toward total Closing Costs with SEDA approved lender. Only applies to full priced contracts written between 10/1/20-10/31/20. This offer is for a limited time only & cannot be combined with any other specials. Price & availability subject to change without notice. 9/30/20

