

Cheyenne Data Center

Cheyenne Colocation Facility

Our premiere facility, CHYDC02 features 35,000 square feet of white space and fully customizable deployments from single cabinets up to powered shell or build-to-suit, with the connectivity options and redundancy you need for 24/7 availability.

Located just 90 minutes from Denver, this facility offers low latencies across the Front Range of the Rocky Mountains. Diverse fiber carriers, up to 100 Gbps connections, low electricity costs, high levels of energy efficiency, and concurrently maintainable redundancy all combine to make Cheyenne DC02 an ideal site for your collocated infrastructure.



Key Features

- 45,000 square feet
- 8 MW available power
- Single cabinets, 20/40 cabinet pods, or full suites available
- N+1 electrical & N+2 cooling
- Concurrently maintainable
- 100% SLAs
- 100GB fiber from diverse carriers
- 100% free cooling
- 1.14 average PUE



We get big-time infrastructure benefits for a fraction of the cost. We need our data centers to be up 100% of the time, and colocation provides that.

—BLACK HILLS ENERGY

800 total cabinets

- Maximum 15KW per cabinet
- Private suites: 7,500 or 3,750 square feet
- 20 or 40 cabinet pods and single cabinets available

Concurrently maintainable 8MW facility

Building footprint: 35,000 sq. ft.

- Data center floor space: 15,000 sq. ft.

Power configurations:

- Critical IT load: 4 MW
- Cooling load: 1 MW
- Total power: 5 MW
- N+1 generators: 6 MW
- N+1 UPS: 5 MW
- N+2 cooling: 1.2 MW

A/B redundancy

- From cabinet to PDU to the UPS to the utility

Customizable to colocation tenant specifications

- UPS, generator, cooling

24 hours of on-site fuel for generators

- Three re-fuel contracts

Modular design allows expansion without interruption of operation

24/7/365 NOC staffing & support

- Included remote hands hours
- Managed service options available

Fenced facilities with intrusion alarms, CCTV monitoring, and keycard, pin code, and biometric access controls

Diverse on-net carriers

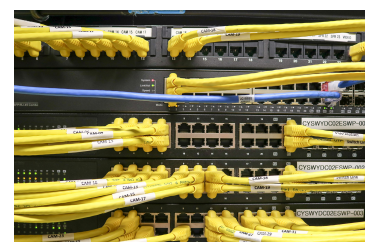
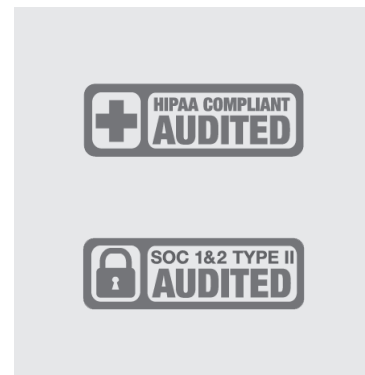
Compliant to HIPAA, SOC 1 & 2 Type II, ITAR, SOX, PCI, and GLB requirements

Tenant office space and conference rooms available

Break area with phone, internet, and kitchen

Energy efficient operations

- Cheyenne customers save up to 65% in energy costs compared to the average data center
- 1.14 average PUE
- 100% free cooling
- Hot aisle containment throughout



ABOUT LUNAVI

As a leading managed service provider and consulting firm, Lunavi is focused on helping customers advance their digital transformation goals by modernizing business applications, migrating solutions to the cloud, designing hybrid cloud solutions, and applying Agile and DevOps engineering practices to build new, innovative solutions. Our portfolio of services is designed to provide continuous improvement along each step of the IT journey to maximize business value and success. We are a Microsoft Gold Partner and Azure Expert MSP, offering deep expertise in the Microsoft ecosystem of enterprise IT software and services. Visit us at www.lunavi.com to learn more and follow us on LinkedIn, Facebook, and Twitter.