

A photograph of five children walking down a set of stone steps. From left to right: a girl in a teal jacket and grey beanie, a boy in a grey hoodie, a girl in a light pink puffer jacket and black leggings, a girl in a dark blue jacket and grey beanie, and a girl in a light pink puffer jacket and purple pants. All five children are wearing light blue surgical face masks. The background is a blurred red brick wall.

# COVID-19 VENUE TRACING

For Canadian Elementary Schools

# Loop's Solution

Loop's fully automated venue tracing check-in platform instills confidence into the reopening of schools.

With a lack of strategies and protocols in place that address schools, **Loop comes equipped with a very simple, fully automated check in platform** that will alleviate pain points and stressors among parents, teachers and staff: **a fully managed venue tracing check-in platform.**



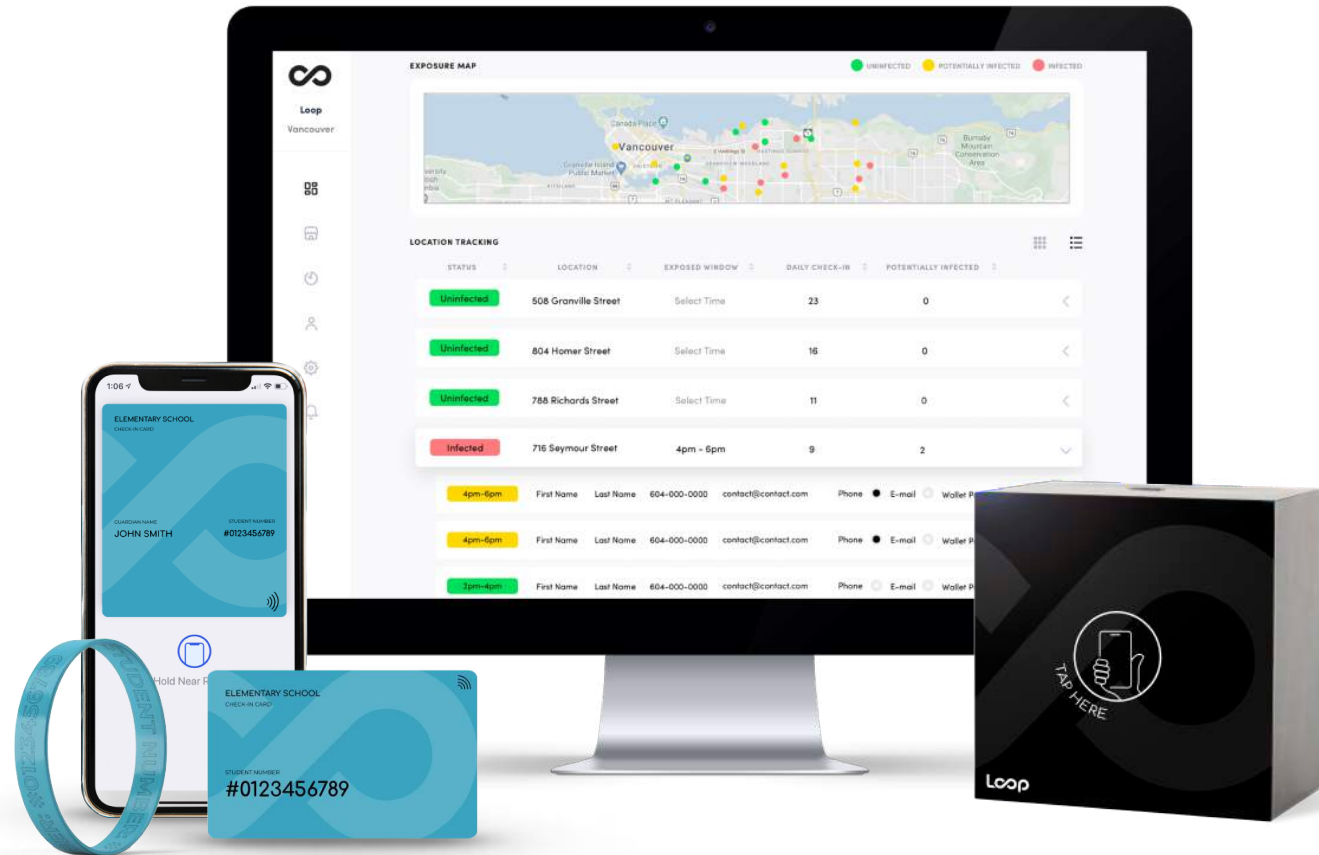
- ✓ Fully Automated
- ✓ Seamless Integration
- ✓ Safe and Secure Data Transfer & Storage
- ✓ Real-time Notifications to Parents and Staff
- ✓ Functional Beyond Covid-19 (lockdowns, evacuations)
- ✓ Scalable





# A Safe Return to School

1. **Creates a sense of safety:** parents can feel at ease knowing that their children's safety is being managed. They will be notified accurately, in real time, if their children become at risk.
2. **Alleviates responsibilities put on staff to manually trace:** Loop's platform is a fully automated, managed service.
3. **Removes liability surrounding the storage of personal information:** Data is de-identified and encrypted. The Loop platform is app-less; it does not use GPS (only monitors check ins), providing a sense of privacy.
4. **Prepares schools for emergencies beyond the Covid-19 pandemic:** schools can be proactive with student tracing during emergencies such as fire evacuations and school lockdowns.



# Parental Visibility

1

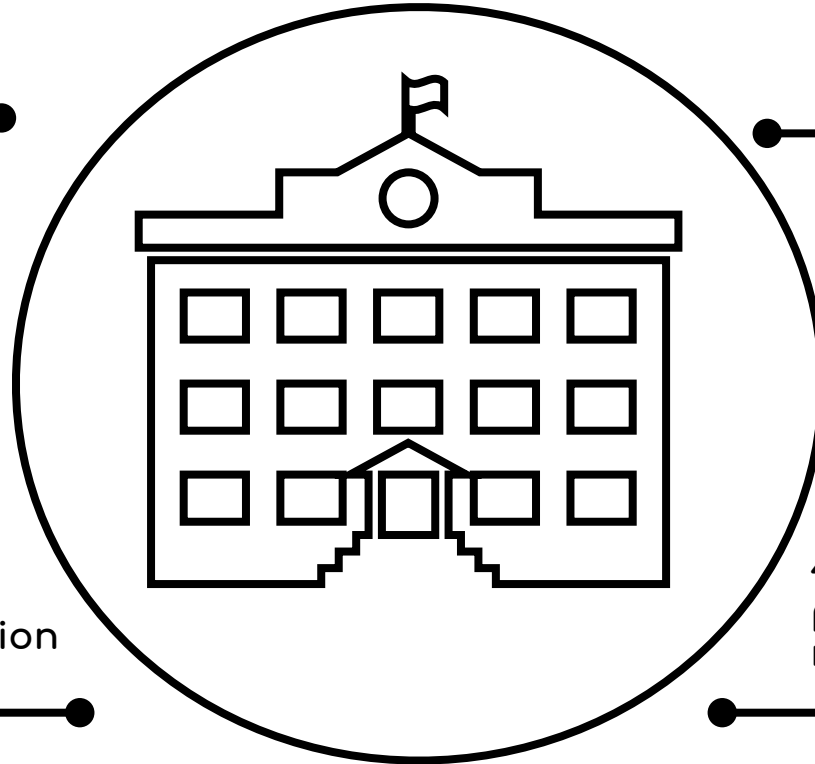
7:45 AM: Student checks in on school bus.

2

8:00 AM: Student checks into Classroom A, automating roll call.

3

8:01 AM: Parent receives notification when student does not check in.



4

3:00 PM: Parent checks in to pick up student from classroom.

5

4:00 PM: Loop is notified of a positive student test.

6

4:01 PM: Alert of potential exposure is sent to parents of students from Classroom A. It is sent via mobile (text, email, automated voice messaging).



# The Loop Venue Tracing Platform



**Loop's SmarTap device:** place these devices at school and classroom entry points for students to check in and out. It can also be deployed beyond school doors (school buses for example) to expand the tracing coverage.

**Venue tracing card or wristband for students:** students simply tap card or wristband on the SmarTap device to check in securely and quickly.

**Venue tracing wallet pass for parents, staff, and third-party visitors:** In addition to checking in, this wallet pass is appealing because you can push automated notifications to their mobile phone. For parents, they can feel at ease knowing that they will receive real-time notifications related to their child's safety—without manual intervention.

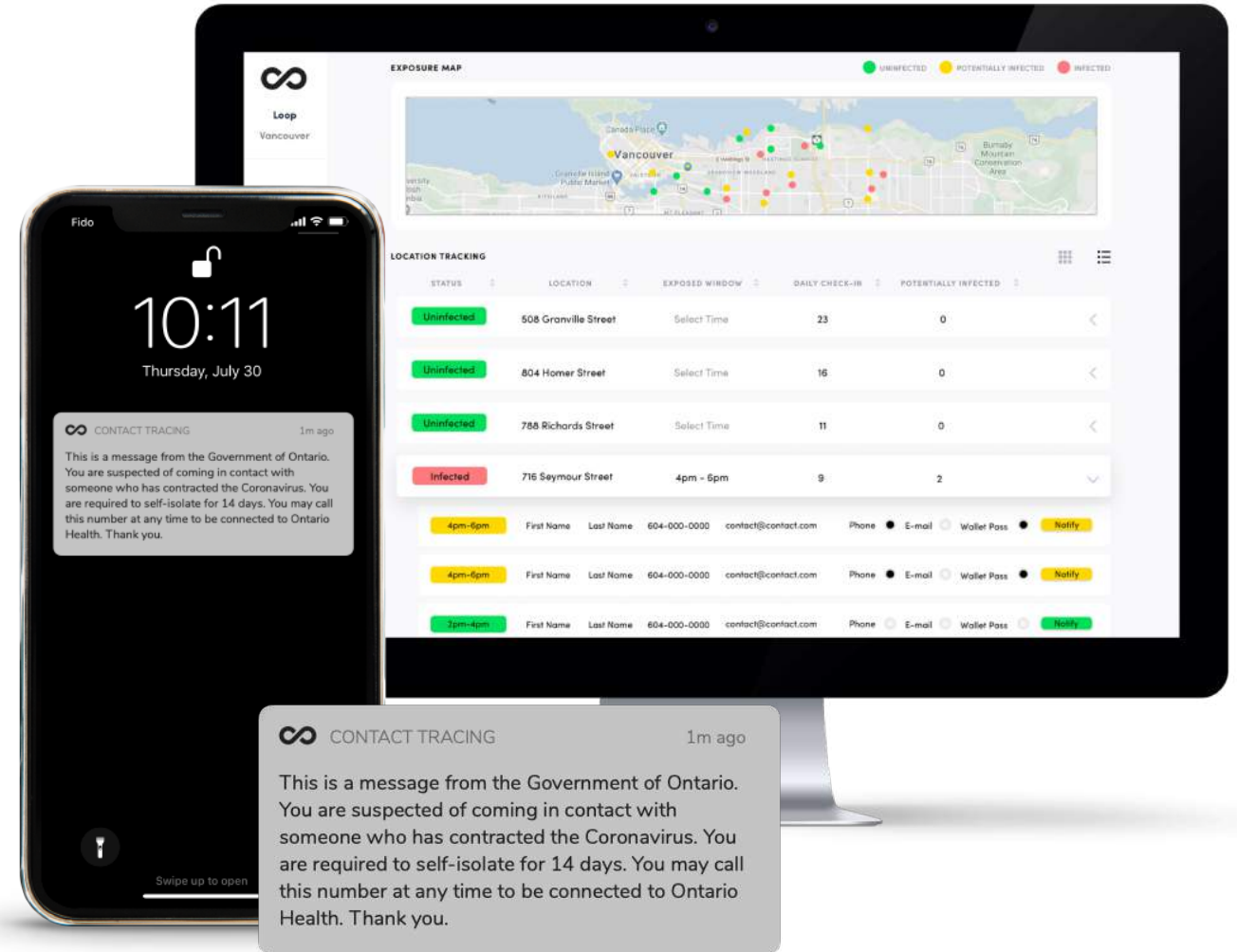


# Data and Parental Alerting

**Dashboard:** Loop's platform comes with real-time reporting of potential exposure risks, based on time of check in and location. The data is de-identified and encrypted.


**Automated notifications and messaging:** Once risks or exposures are reported, all impacted families are notified directly to their mobile phone (can be delivered through text, email, and/or automated voice message).

**\*Parental peace of mind:** fast, direct communication on where their children are, and any potential risks to them, will provide a sense of security in this new normal.



## Rob Anson

CEO, Loop Insights

 778.689.6549

 rob@loopinsights.ai



[LinkedIn.com/loopinsights](https://www.linkedin.com/company/loopinsights)



[Twitter.com/loopinsights](https://twitter.com/loopinsights)



[Instagram.com/loopinsights](https://www.instagram.com/loopinsights)

