

EXCLUSIVE TO  nimbus®

SITE FINDING SERVICE

We find sites at scale to meet your exact requirements.

You save time and money, plus you'll stay ahead of the competition!



WHAT IS THE SITE FINDING SERVICE?

At Nimbus Maps we have a team of data experts to do the hard work for you. We review more than 33 million land and property records in the UK, on and off market, to find those that match your requirements.

In addition to the powerful data sets that power our impressive Nimbus Maps platform, we have access to a vast potential of data points to help identify the ultimate sites to target for investment and development.

HOW DOES IT WORK?

You'll schedule a call at a time to suit you with one of our bespoke data experts. On the call we'll establish the scope of your requirements and build the specification. Following the call we'll define your project in a proposal with costings.

If you wish to proceed with the project, 70% of the fees will be invoiced on instruction. Your data will be built by our engineering team and we'll demonstrate the project results on a call together. On payment of the remaining balance, the data will be issued in a format to suit you.

[BOOK A CALL](#)

STEP 1

TALK TO ONE OF OUR DATA EXPERTS



STEP 2

YOUR BESPOKE PROPOSAL



STEP 3

WE SEARCH 33 MILLION RECORDS



STEP 4

WE CONTACT THE OWNERS



STEP 5

WILLING SELLERS CONTACT YOU



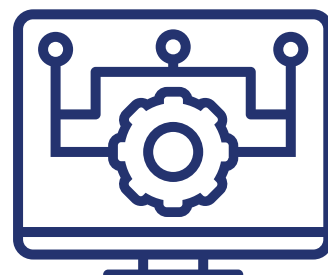
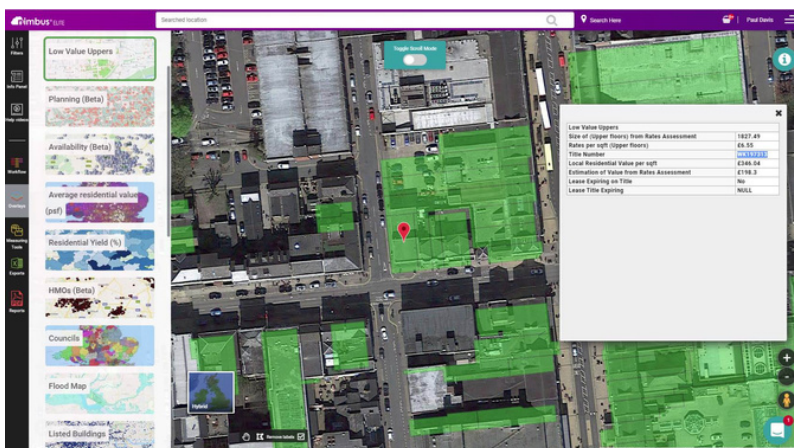
WHAT SEARCH CRITERIA CAN I USE?

It depends entirely on what you want to search for and we'll help you set the criteria depending on the outcome you are looking for. Examples of typical criteria include:

- Buildings in Bristol where ground leases granted on residential properties on the title, meeting a specific residential value formula.
- Off market, corner plots, back gardens and side gardens in a 10 mile radius of Weybridge train station.
- Commercial buildings over 3,000 sqft in a densely populated area in Oxfordshire.
- Bungalows in Kent, on large plots, in a settlement with a population over 700 people.
- Retail space on the ground floor with upper parts in commercial use with a total rates assessment less than £30,000, in the borough Bromley, in a settlement with a population greater than 2,000, on a road with other residential properties on it.
- Planning applications within the last 60 days for 50-100 residential units within 50 miles of Manchester.
- All companies that have bought or sold more than 5 properties in the South West of England in the last 12 months.

WHAT FORMAT IS THE DATA IN?

We can provide the data in any format to suit you including spreadsheet or an API data feed. We can even create a custom overlay in your Nimbus platform. Take a look...



CAN NIMBUS MAPS SEND LETTERS ON MY BEHALF?

Where required, we can issue letters to the property owners on your behalf. You decide who to contact and provide the letter template, and we do the rest. No more licking stamps and envelopes!



HOW LONG DOES THE PROCESS TAKE?

From consultation through to delivery of the data work usually takes 4-6 weeks to complete.

DO YOU WANT WILLING SELLERS TO CONTACT YOU?

[BOOK A CALL](#)



EMAIL [BESPOKE@NIMBUSPROPERTY.CO.UK](mailto:bespoke@nimbusproperty.co.uk)

EXCLUSIVE TO  nimbus®

THIS BESPOKE SERVICE IS AVAILABLE FOR
ELITE ANNUAL USERS ONLY.



 nimbus®

success@nimbusproperty.co.uk

01926 355 424

www.nimbusmaps.co.uk