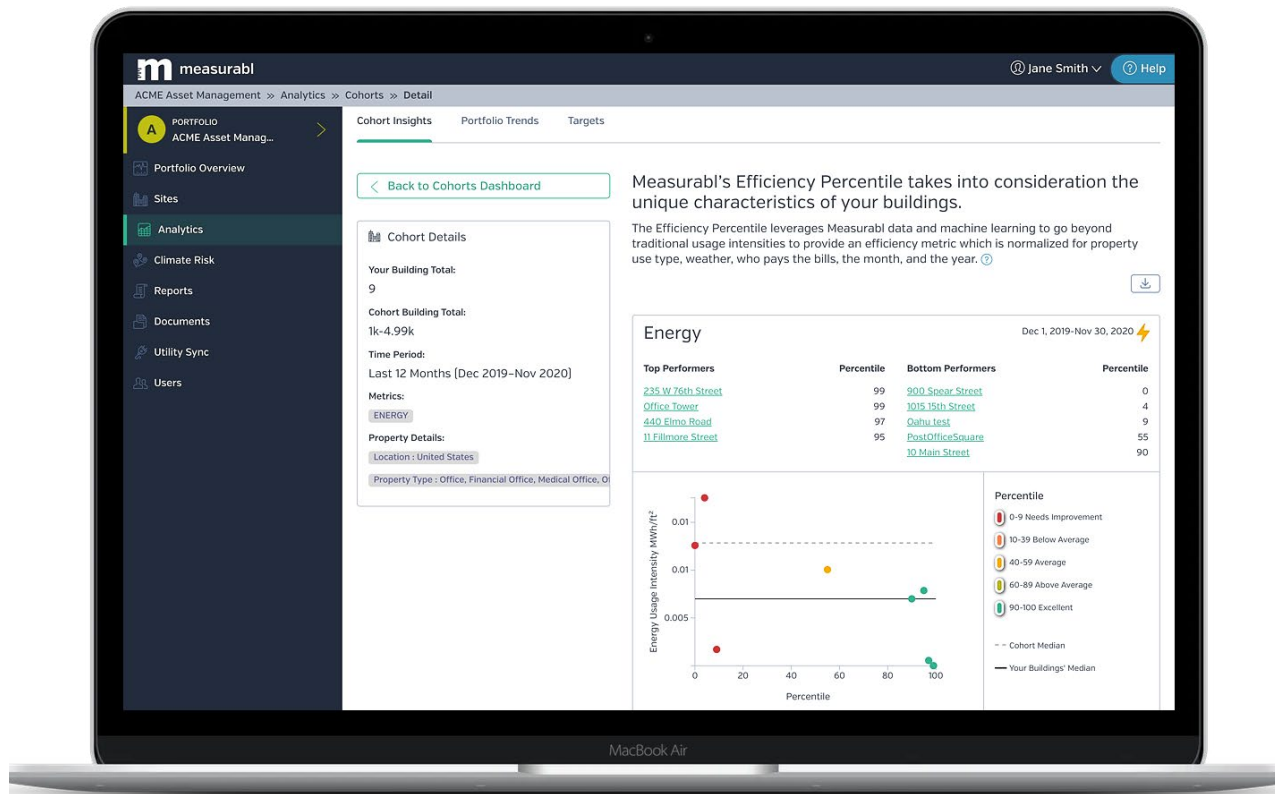


Measurabl Premium

Learn about our innovative new features available only to top-tier customers.



On-Demand ESG Performance Benchmarking and Analysis

Annual ESG benchmarks merely serve as a snapshot in time. Go beyond the annual report and unlock a more sophisticated way to monitor and benchmark asset-level performance. Cohort Insights, Measurabl's powerful analytics tool, allows users to instantly compare the performance of their buildings to that of their peers. Cohort Insights draws timely and relevant information from Measurabl's database of more than 15 billion square feet of commercial real estate so users can compare their real assets to other buildings with similar characteristics. Get transparent, customizable, and actionable insights about energy consumption, water usage, and carbon emissions to improve building performance.



Manage Social and Governance Documents

Now, you can manage environmental, social, and governance data all in one platform with Measurabl's Document Repository. This feature allows users to upload, track, and collaborate on policies, disclosure reports, and other qualitative materials in the same platform where their environmental data is stored. When you're ready to disclose ESG data, don't waste time hunting down necessary documents—keep them all in a secure, easily searchable platform.

Get a Bird's Eye View of Your Overall ESG Performance

Need a high-level view of your ESG metrics across numerous real assets? CrossView displays performance and data quality metrics from each of your portfolios and subgroups. Get an overview of carbon output, energy usage, green building certifications, and project performance so you can compare performance across all of your property groups. You can also view data completeness for a selected time period, so you can determine whether subgroups are falling behind on data collection as you prepare for your annual report.

Increase Data Coverage and Accuracy With Estimates

Gaps in building utility data are common, and they prevent building owners from achieving full data coverage and seeing their buildings' true energy performance. Estimates will enable customers to achieve 100% data completeness by filling energy data gaps. Measurabl will use historical data from the meter being estimated to fill meter reading gaps. Customers can apply estimates wherever data is missing, and remove estimates as soon as actual data becomes available.

