

New ideas for architecture and interior design

SELF-ADHESIVE FURNITURE FILM







Shorter advertising cycles, changing interior trends or seasonal promotions – easySTYLE is an ideal solution for many applications. It is a fast and economical way for quick changes in interior and store design.

Almost all furniture surfaces can be changed quickly and easily into the desired appearance from the wood grain to the marble look, and from right down to the whiteboard, it opens you numerous, fantastic possibilities in surface refinement.

Our furniture foils are made to high sustainability-standards to protect the environment.

ADVANTAGES

- Fast and easy application
- PVC-free, paper-based surface
- No shrinkage
- Scratch-resistant
- Cost- and time-efficient
- Easy removal without residue

TECHNICAL FACTS

- Required temperature range for processing: 5 °C to 40 °C
- Chemical resistance: easySTYLE is certified according to DIN68861, 1B to 1D
- Lightfastness: at least 6 on the international wool scale according to DIN EN ISO 105-B02

	10 m × 124 cm	25 m × 124 cm	Surface
Anthracite Super Matt	6044263	6044223	Matt
Ashton	6044258	6044218	Haptic
Canyon	6044255	6044215	Haptic
Caspio	6044253	6044212	Haptic
Catania Oak	6044252	6044211	Haptic
Haitabu	6044257	6044217	Haptic
Kiruna	6044262	6044222	Haptic
Meton Concrete	6044261	6044221	Satin finish
Meton Copper	6044260	6044220	Satin finish metallic
Meton Gold	6044259	6044219	Satin finish metallic
Rovere Gessato	6044256	6044216	Haptic
Sonoma Oak	6044254	6044214	Haptic
Whiteboard	6044248	6044208	High gloss
White High Gloss	6044250	6044209	High gloss
White Super Matt	6044251	6044210	Matt

OVERVIEW



Anthracite Super Matt



Ashton



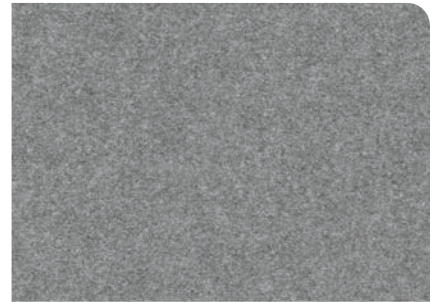
Canyon



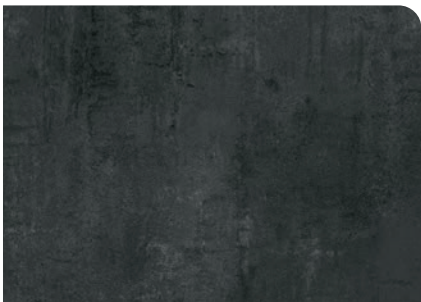
Caspio



Catania Oak



Haitabu



Kiruna



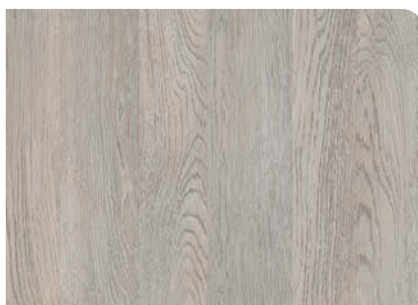
Meton Concrete



Meton Copper



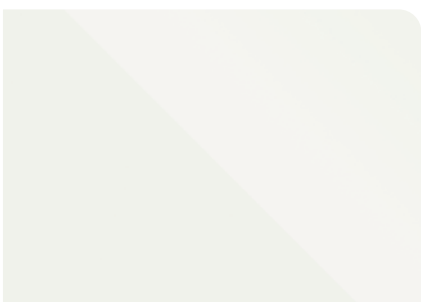
Meton Gold



Rovere Gessato



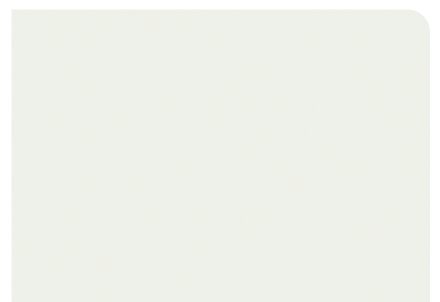
Sonoma Oak



Whiteboard



White High Gloss



White Super Matt

CHARACTERISTICS

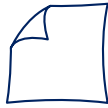
easySTYLE is a paper-based self-adhesive film with a variety of decorative styles. easySTYLE creates high-quality results with minimal effort.



Structured surface



Bubble-free application



Removable without residue



Environmentally friendly



Furniture standard



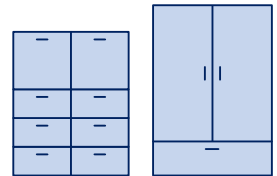
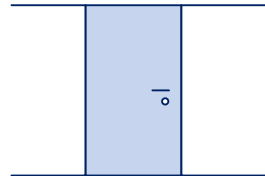
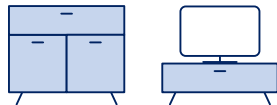
Paper-based



Shrink-proof

APPLICATIONS

easySTYLE has been developed for fast and easy applications on furniture and can be applied to almost all flat and smooth surfaces.



SUBSTRATES

Plywood and MDF boards (preferably pre-coated), solid wood, plastics, metal and lacquered surfaces.

AVAILABLE SIZES

easySTYLE is available in 2 roll sizes: 10 m x 124 cm (ideal as sample size) and 25 m x 124 cm.

PROCESSING

Before applying easySTYLE, all surfaces should be cleaned properly. Optimal application can be achieved on a smooth, dry, fat-free and dust-free surface.

easySTYLE offers a revolutionary air-channel technology, which allows an effortless application and the ability to easily transport any trapped air to the material edges guaranteeing a bubble-free finish. easySTYLE is also repositionable and can, therefore, be applied and corrected several times without tearing or wrinkling.

Place easySTYLE on the desired surface and cut to size. For small areas, remove the film completely from its liner, place it on the surface and push any air bubbles to the edges. When working on large areas, we recommend that you peel back 10 – 15 cm of the release liner, apply the film to the edge of surface, and then slowly peel off the liner while smoothing the film with a soft plastic squeegee. Trapped air can be removed with the squeegee; always pushing from the center to the edges. Excess material can be removed with a cutter.

The film offers pushing residue-free removal from almost all surfaces, thereby restoring the original look of the original surface. The ideal application temperature is 15 °C to 25 °C.

easy**STYLE**
a brand of

Neschen Coating GmbH | Germany

Distribution Scandinavia:

Filmolux Scandinavia AB
Hästholmsvägen 32
131 30 Nacka
Sverige

T. +46 10 179 11 00

www.filmolux.se

